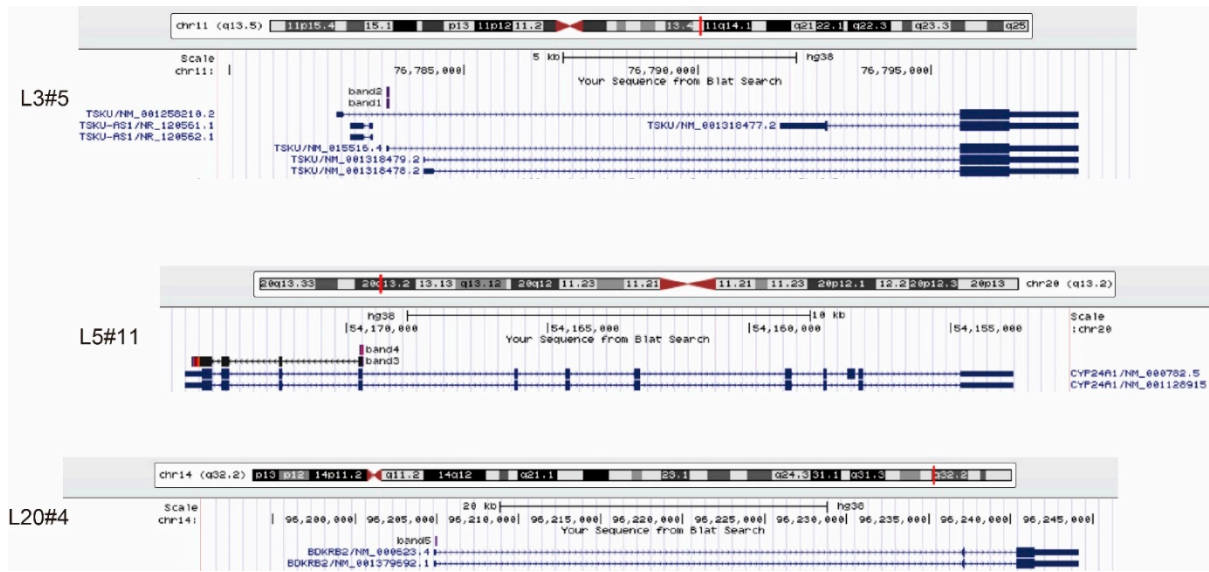


**Figure S1.** (a) 5' RACE to identify responsive genes fused to *P2A-GAL4FF* and (b) colony PCR analysis for subsequent cloning of the 5' RACE cDNA fragment (A-E in (a)) into pBluescript II. They were performed exactly as described previously [4].



**Figure S2.** Mapping of the DNA fragment cloned using 5' RACE for genes fused to *P2A-GAL4FF*. The DNA fragment shown in Figure S1(b) was collected, purified, read by a reverse primer (Supplementary Data S1–5), and analyzed using the BLAT tool (<https://genome.ucsc.edu/cgi-bin/hgBlat>).