

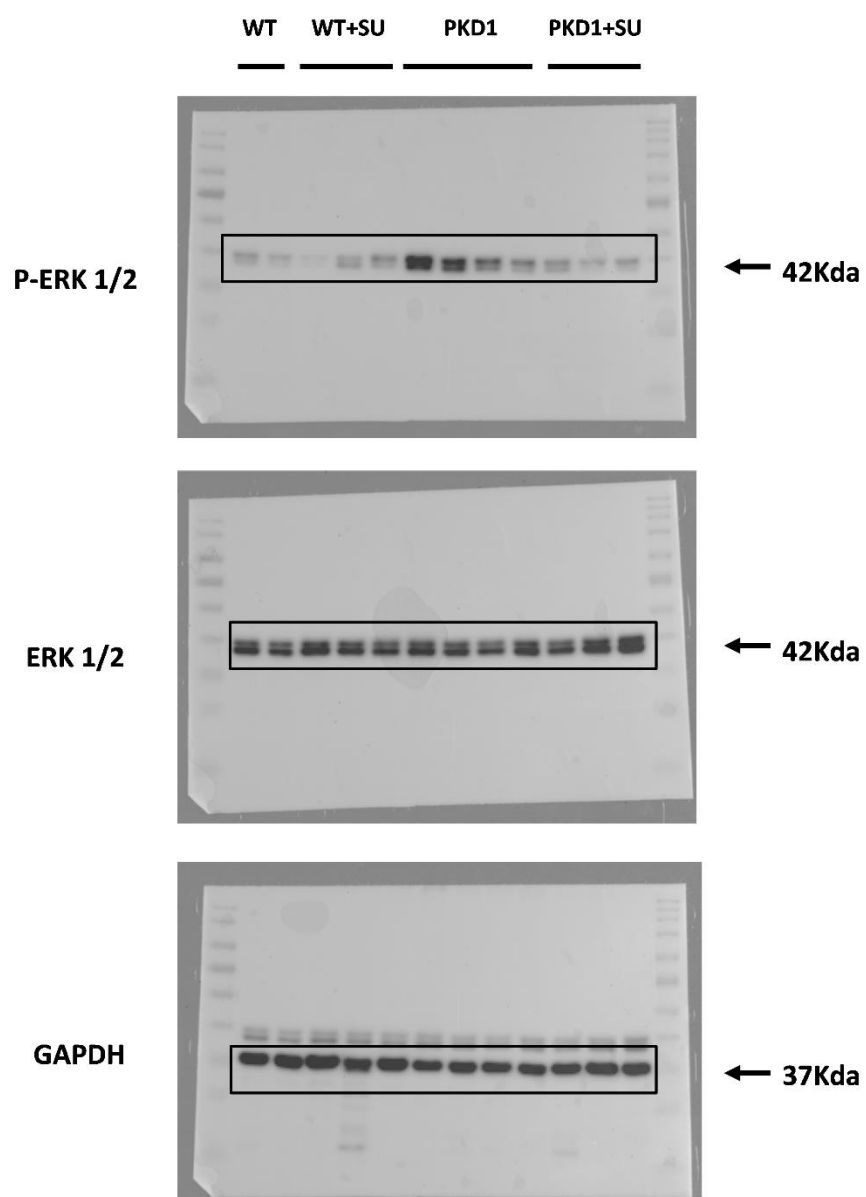
**Supplementary Table S1.** Effects of suramin on body weight and kidney weight of wild-type and *Pkd1*-miR Tg mice

	<b>WT+Vehicle (n=6)</b>	<b>WT+Suramin (n=8)</b>	<b><i>Pkd1</i>+Vehicle (n=22)</b>	<b><i>Pkd1</i>+Suramin (n=20)</b>
Gender, F/M	3/3	4/4	10/12	11/9
Body weight (g), M	26.9± 2.0	23.0 ± 0.8*	25.1 ±0.5	23.3 ± 0.5*
Body weight (g), F	22.4 ± 0.2	20.9 ± 0.9	21.5 ± 0.3	18.6 ± 0.6**, ###
Kidney weight (g), M	0.35 ± 0.03	0.30± 0.02	0.61 ± 0.02***	0.56± 0.03***
Kidney weight (g), F	0.26 ± 0.00	0.26 ± 0.01	0.45± 0.03**	0.36 ± 0.02 <sup>#</sup>
Kidney-to-body weight ratio (%)	1.23 ± 0.03	1.29± 0.06	2.28± 0.09***	2.16 ± 0.09***

Values are mean ± SEM. \**P* < 0.05, \*\**P* < 0.01, and \*\*\**P* < 0.001 versus wild-type mice (WT) treated with vehicle; <sup>#</sup>*P* < 0.05, ### *P* < 0.001 versus *Pkd1*-miR Tg mice treated with vehicle.

**Supplementary Table S2.** TaqMan probe ID and primer sequences

<i>Gene</i>	<i>Taqman probe or primer sequences (5' to 3')</i>
<i>Col1a2</i>	F: AAGGGGTCTTCCTGGTGAAT R: GGGGTACACGTTCTCCTC
<i>Fn1</i>	F: TGTGACCAGCAACACGGTG R: ACAACAGGAGAGTAGGGCGC
<i>Tgfb1</i>	F: TCGTCTGCTGAGGCTCAA R: TTGCTGAGGTATCGCCAGGA
<i>Emr1 (F4/80)</i>	Mm00802529_m1
<i>Il1b</i>	Mm00434228_m1
<i>Il6</i>	Mm01210733_m1
<i>Mcp1</i>	Mm00441242_m1
<i>Nlrp3</i>	Mm00840904_m1
<i>P2rx7</i>	Mm00440578_m1
<i>P2ry2</i>	Mm02619978_s1
<i>Rn18S</i>	Mm03928990_g1
<i>Tnf</i>	Mm99999068_m1



**Supplementary Figure S1.** Uncropped Western blot images of Figure 6.