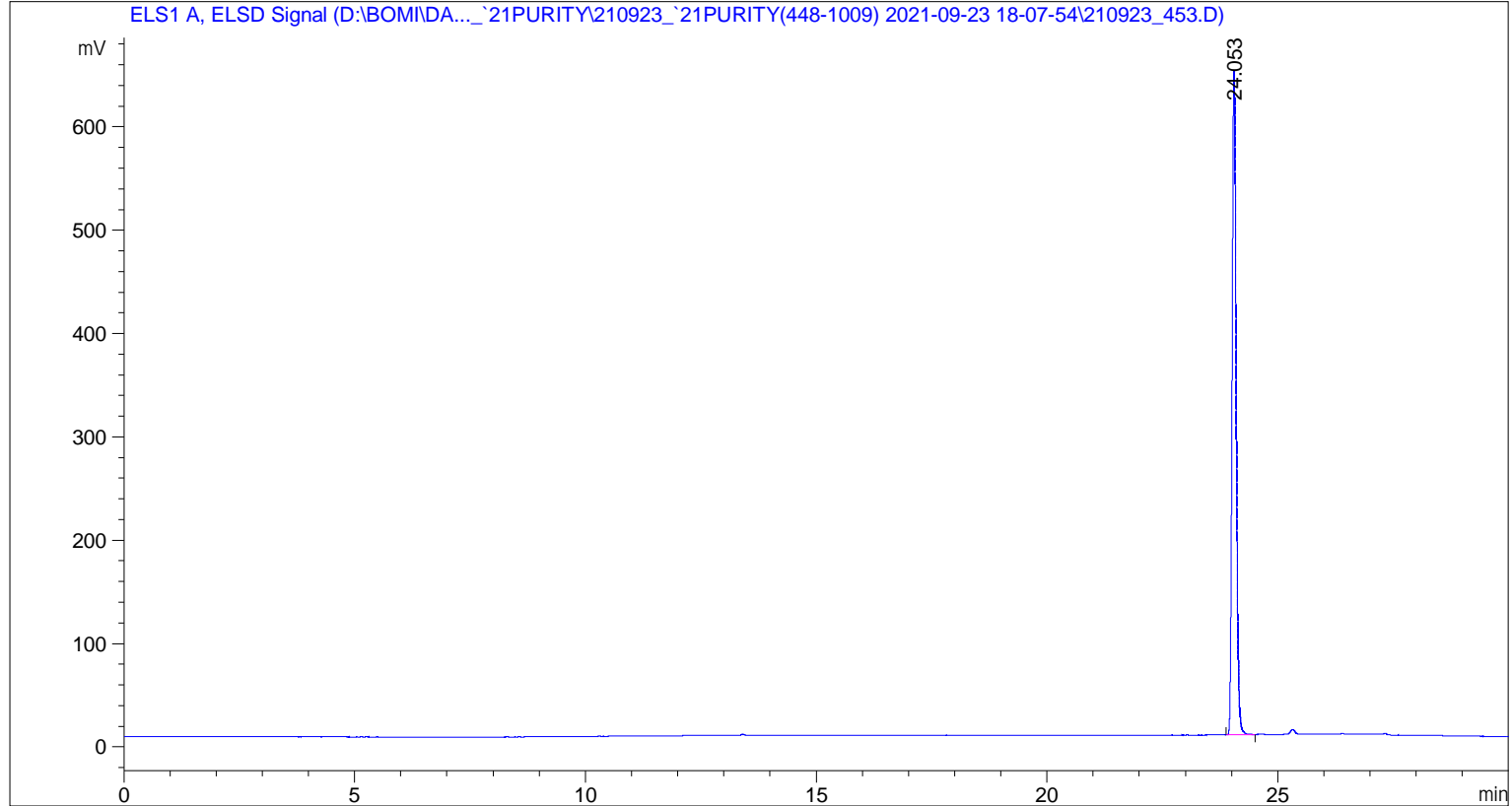


=====

| | | | |
|---|---|------------|------------|
| Acq. Operator | : SYSTEM | Seq. Line | : 67 |
| Acq. Instrument | : 1260HPLC_ELSD2 | Location | : Vial 63 |
| Injection Date | : 2021-09-25 오전 4:16:16 | Inj | : 1 |
| | | Inj Volume | : 3.000 µl |
| Acq. Method | : D:\BOMI\DATA\210923_`21PURITY\210923_`21PURITY(448-1009) 2021-09-23 18-07-54\PURITY_SOP.M | | |
| Last changed | : 2021-09-24 오후 1:40:23 by SYSTEM | | |
| Analysis Method | : D:\BOMI\DATA\210923_`21PURITY\210923_`21PURITY(448-1009) 2021-09-23 18-07-54\PURITY_SOP.M (Sequence Method) | | |
| Last changed | : 2021-09-29 오후 2:12:18 by SYSTEM (modified after loading) | | |
| Additional Info : Peak(s) manually integrated | | | |



=====

Area Percent Report

=====

Sorted By : Signal
Multiplier : 1.0000
Dilution : 1.0000
Use Multiplier & Dilution Factor with ISTDs

Signal 1: ELS1 A, ELSD Signal

| Peak # | RetTime [min] | Type | Width [min] | Area [mV*s] | Height [mV] | Area % |
|--------|---------------|------|-------------|-------------|-------------|----------|
| 1 | 24.053 | BB | 0.0958 | 3955.41187 | 642.78937 | 100.0000 |

Totals : 3955.41187 642.78937

=====
*** End of Report ***