



Table S1. Ginkgo LBD gene characteristics.

Gene Name	Gene ID	Type	Ortholog				Size(aa)	MW(Da)	pI	Stability	Predicted Location
			AtLBD	Identify(%)	PtLBD	Identify(%)					
GbLBD01	Gb_20398	Ia	AtLBD15	77.50	Potri.013G081200	73.28	179	19654.27	8.39	U	Nucleus
GbLBD02	Gb_23794	Ic	-	-	Potri.001G281600	66.67	311	34327.78	8.51	U	Nucleus
GbLBD03	Gb_21467	If	-	-	-	-	251	28300.81	7.58	U	Nucleus
GbLBD04	Gb_13424	Ia	-	-	-	-	238	24776.23	8.63	U	Nucleus
GbLBD05	Gb_07877	If	-	-	-	-	362	40996.89	7.24	U	Nucleus
GbLBD06	Gb_19567	Id	-	-	-	-	115	13049.83	8.93	U	Nucleus
GbLBD07	Gb_38978	Ia	AtLBD15	74.83	Potri.013G081200	84.80	178	19418.17	8.97	U	Nucleus
GbLBD08	Gb_29853	Ic	AtLBD12	73.68	Potri.007G066700	68.42	176	19171.03	8.18	U	Nucleus
GbLBD09	Gb_14010	Ib	-	-	-	-	288	31232.51	7.17	U	Nucleus
GbLBD10	Gb_22178	Id	-	-	-	-	257	29360.18	6.54	S	Nucleus
GbLBD11	Gb_19384	Id	-	-	-	-	174	19941.43	5.92	U	Nucleus
GbLBD12	Gb_19383	Id	-	-	-	-	179	20286.76	4.99	U	Nucleus
GbLBD13	Gb_19390	Id	-	-	-	-	172	19238.63	5.83	U	Nucleus
GbLBD14	Gb_19389	Id	-	-	-	-	175	19970.24	5.30	U	Nucleus
GbLBD15	Gb_10524	Ia	AtLBD15	69.51	Potri.013G081200	68.12	197	21639.58	8.94	U	Nucleus
GbLBD16	Gb_10825	Ila	-	-	-	-	324	36227.24	7.80	U	Nucleus
GbLBD17	Gb_40767	Ia	-	-	-	-	189	20743.55	9.05	U	Nucleus
GbLBD18	Gb_19720	If	-	-	-	-	306	34932.94	8.78	U	Nucleus
GbLBD19	Gb_39343	Ib	-	-	Potri.002G041200	68.12	223	24724.12	6.14	U	Nucleus
GbLBD20	Gb_16914	Id	-	-	-	-	174	19234.57	4.92	U	Nucleus
GbLBD21	Gb_16918	Id	AtLBD12	67.89	-	-	175	19181.45	5.11	U	Nucleus
GbLBD22	Gb_20676	Id	-	-	-	-	186	20709.77	7.65	U	Nucleus
GbLBD23	Gb_36943	Ila	-	-	-	-	515	57684.72	8.91	U	Nucleus
GbLBD24	Gb_36942	Ila	-	-	-	-	420	46037.00	8.88	U	Nucleus
GbLBD25	Gb_21109	Ic	AtLBD4	68.02	Potri.001G08140	71.76	273	30263.96	9.27	U	Nucleus
GbLBD26	Gb_09463	Id	-	-	-	-	174	19156.48	4.41	U	Nucleus
GbLBD27	Gb_40684	Id	-	-	-	-	150	17013.35	4.99	U	Nucleus
GbLBD28	Gb_22437	Id	-	-	-	-	197	22136.24	6.09	S	Nucleus
GbLBD29	Gb_36035	Id	-	-	-	-	197	22120.27	5.81	U	Nucleus
GbLBD30	Gb_02917	Id	-	-	-	-	119	13728.72	8.73	U	Nucleus
GbLBD31	Gb_38119	Ic	AtLBD4	74.19	Potri.005G097800	75.20	136	14800.99	9.08	U	Nucleus
GbLBD32	Gb_03653	Ia	AtLOB	68.42	Potri.012G083500	73.85	231	25331.83	8.26	U	Nucleus
GbLBD33	Gb_02663	Ib	-	-	-	-	239	25923.15	6.15	U	Nucleus
GbLBD34	Gb_00144	Id	AtLBD1	72.32	Potri.001G281600	69.72	146	16593.95	6.40	U	Nucleus
GbLBD35	Gb_09641	Ilb	-	-	-	-	633	70905.07	9.68	U	Nucleus
GbLBD36	Gb_23688	Ia	AtLBD15	70.32	-	-	203	22114.06	8.97	U	Nucleus
GbLBD37	Gb_08465	Id	-	-	Potri.010G184400	65.05	178	20162.60	5.09	U	Nucleus

Table S2. Primer sequences.

Primer ID	Forward PCR primer (5' -3')	Reverse PCR primer (5' -3')
<i>Gb_GAPDH</i>	GGTGCCAAAAAGGTGGTCAT	CAACAACGAACATGGGAGCAT
<i>GbLBD01</i>	TGTGCCCAGGAGTGTCCGTT	CGCCCTCTGGCTCTCTGGTA
<i>GbLBD04</i>	CCCGTCTATGGCTGCGTTGG	GGGCTTGCCTGCTGTGTCAA
<i>GbLBD05</i>	GCTTGGAAGCTTTACCCGACT	GGCTTGTGTTGAGCCGCAGT
<i>GbLBD07</i>	GCACGTCTGCAAGACCCTGT	GCATTGGAGTTGGCGGGACT
<i>GbLBD16</i>	GGGATGTCCTGTACGACCGCTA	CCCGCTTCCGGCAGATGATG
<i>GbLBD18</i>	CATCTACGCCGCCGTCTTCC	TGCAGCACAAAGCCTGACTCG
<i>GbLBD20</i>	CTACGGTTGTGCAGGCGTCA	TCGGAACGCAGGTTGAGAAGC
<i>GbLBD21</i>	TCGCAACCGCACATCGAGTT	GAGCCTTGCACTGGCTTCGT
<i>GbLBD23</i>	GGCTGTAGCGACTCCTGCAC	TCAATCCAGCGCGCCCATAG
<i>GbLBD24</i>	GCTGCCGAGTCCTCCGAAAG	GCCCTGCTCGCCCATAGAAC
<i>GbLBD25</i>	GTTGGCCGTTAGCCGAGTG	ATGCACCGGCCATGAACCAA
<i>GbLBD31</i>	GCCAAGGACTGCGTGTTC	CCCTCTCTGCTCCACCGGAA
<i>GbLBD32</i>	TCTGCAGCACCAGGTCAAGC	CGCGAGGTTCTGCGCAATCC
<i>GbLBD33</i>	GCTCTCCAACAACAGGTCGCA	GCAGCAGCAGCAGACGAAGA
<i>GbLBD35</i>	CGCAAGGTCACGCCACTGTA	CCCGCATGCCTCGTACAACA

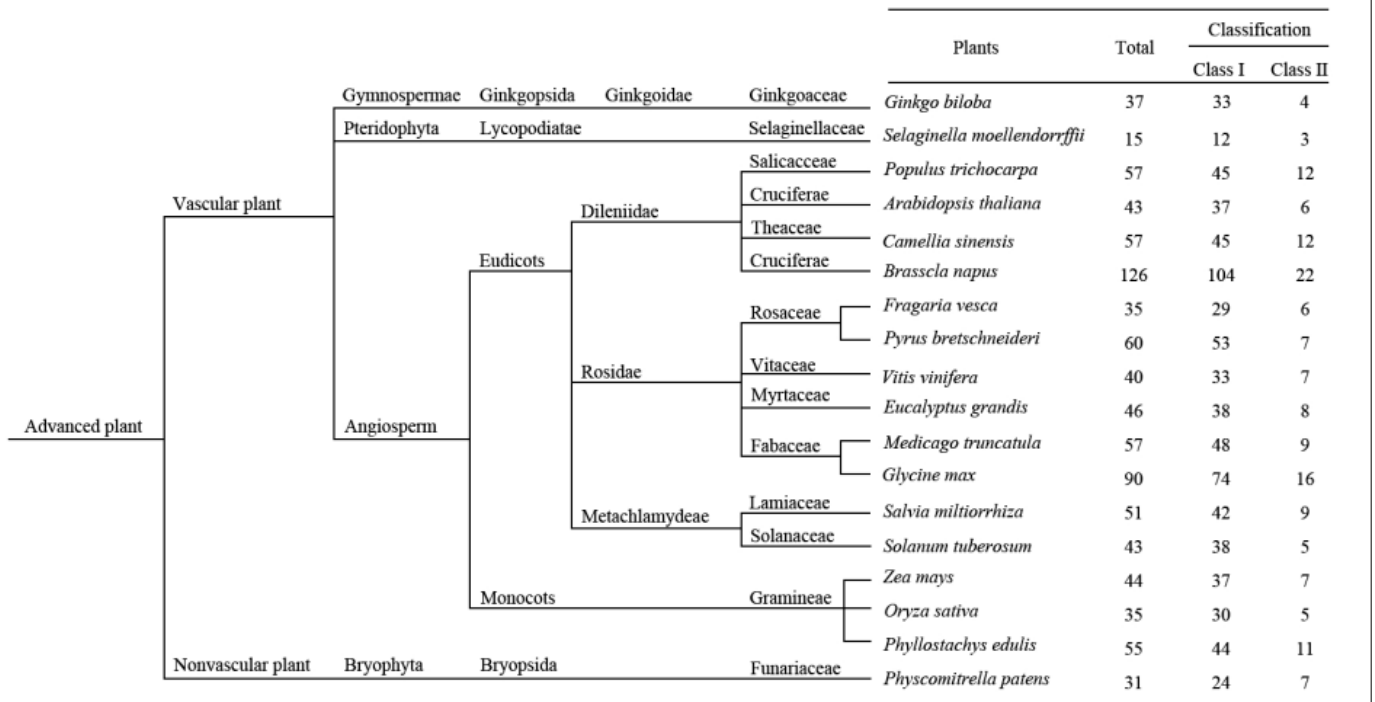


Figure S1. Number of LBD genes in different species.

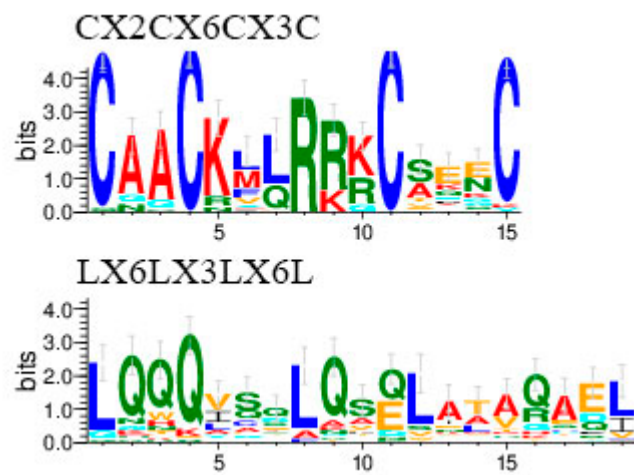


Figure S2. Conserved motif icon of GbLBD protein.