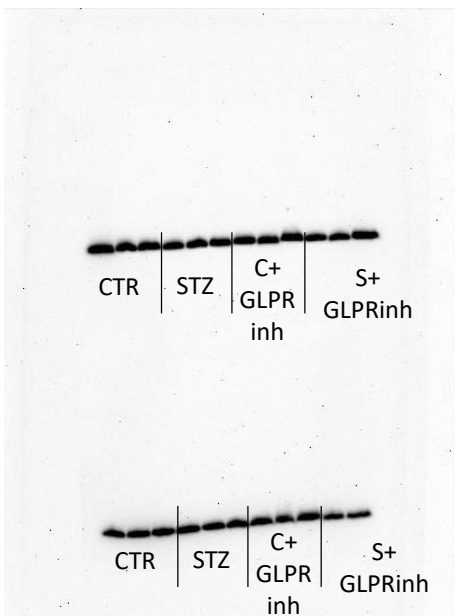
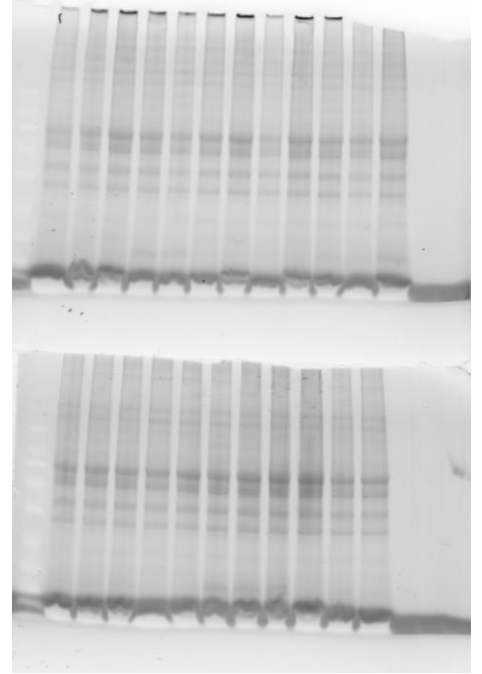


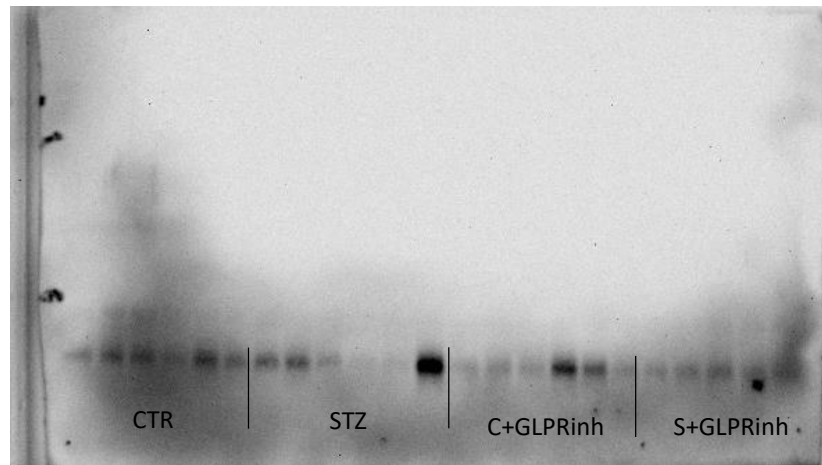
CytC – HPC Figure 2Aiii



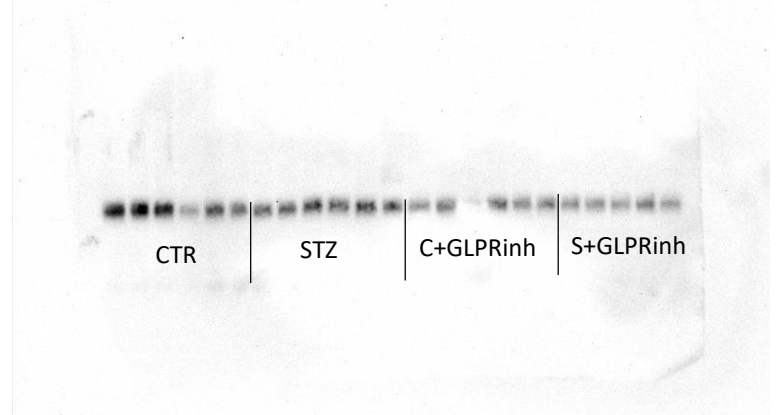
Total proteins on gels visualized using UV (TGX Stain-Free 12% gels) – Figure 2Aiii



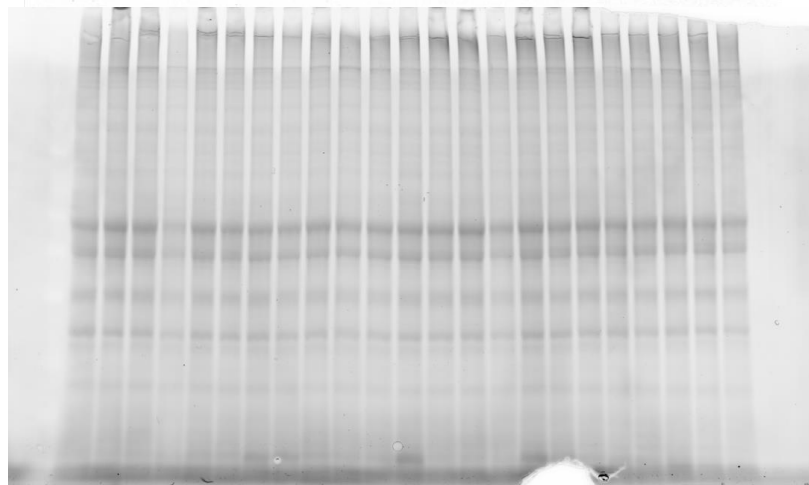
COXIV – HPC Figure 2Ai

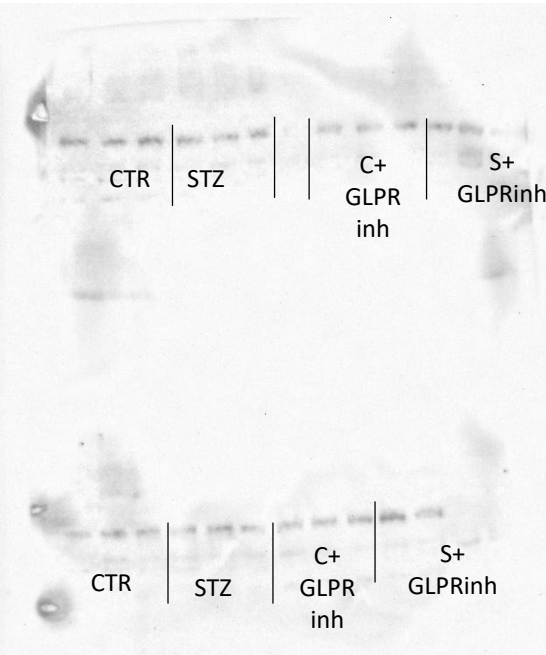


PDH – HPC Figure 2Av



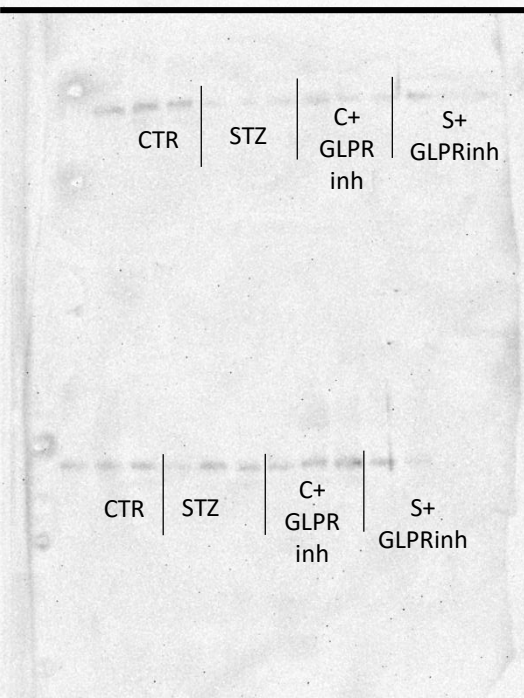
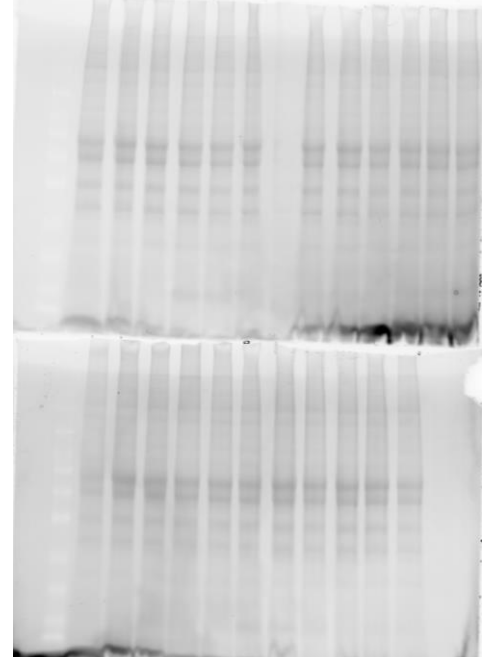
Total proteins on gels visualized using UV (TGX Stain-Free 12% gels) – For Figures 2Ai and 2Av





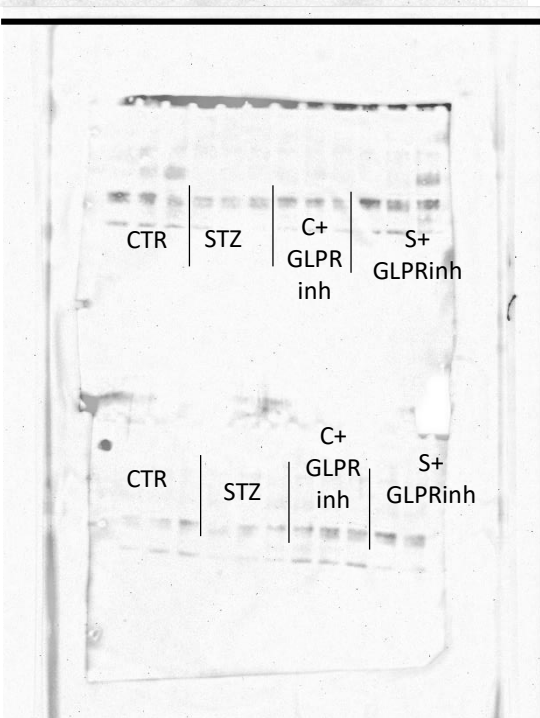
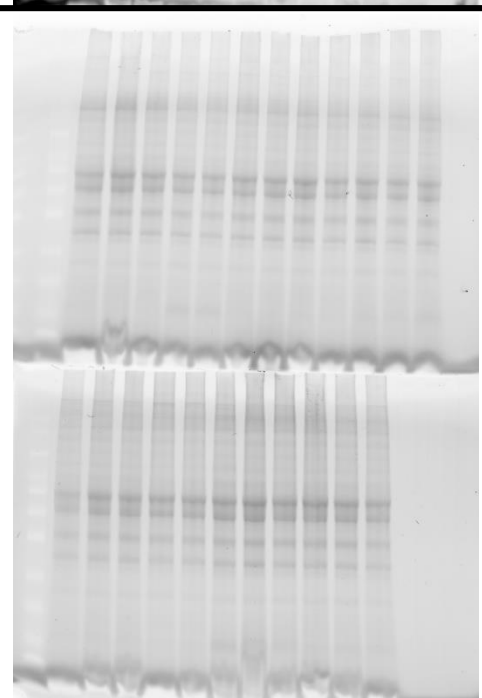
AMPK– HPC
Figure 3Aiii

Total proteins on
gels visualized
using UV (TGX
Stain-Free 12%
gels) – Figure 3Aiii



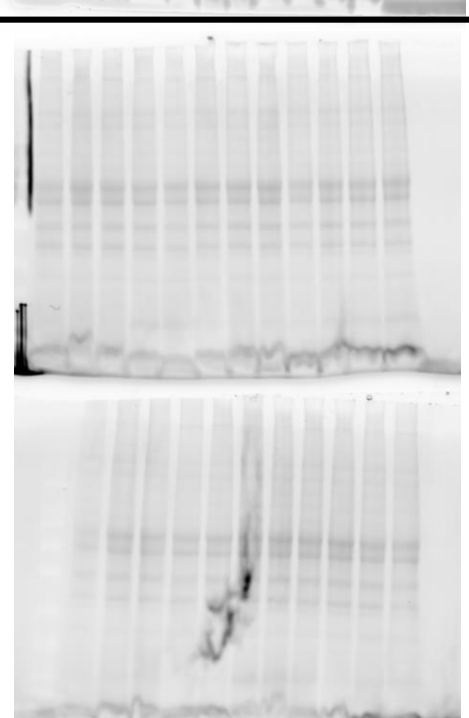
pAMPK– HPC
Figure 3Ai

Total proteins on
gels visualized
using UV (TGX
Stain-Free 12%
gels) – Figure 3Ai



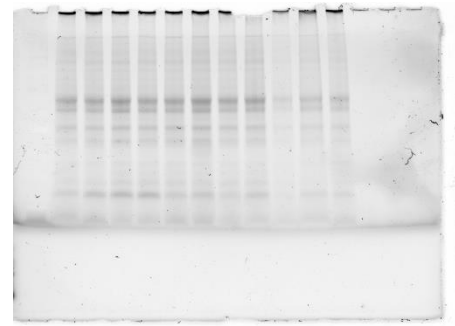
c-fos– HPC
Figure 4Ai

Total proteins on
gels visualized
using UV (TGX
Stain-Free 12%
gels) – Figure 4Ai

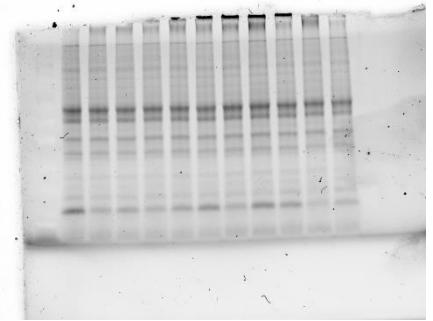


CytC– HPT
Figure 2Aiv

CTR | STZ | C+
GLPR
inh | S+
GLPRinh



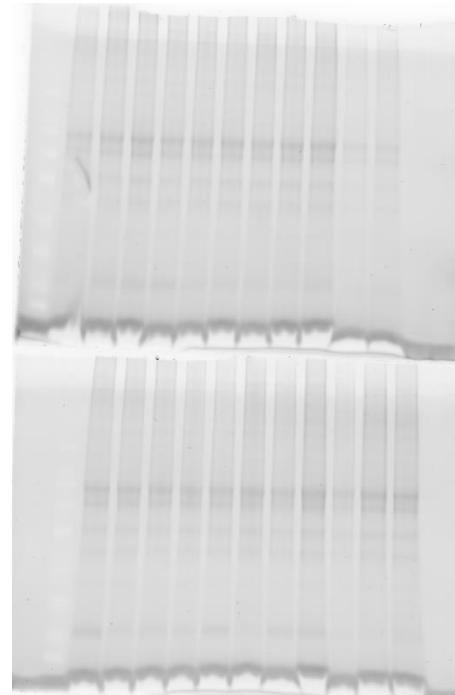
Total proteins on
gels visualized
using UV (TGX
Stain-Free 12%
gels) – Figure
2Aiv



COXIV– HPT
Figure 2Aii

CTR | STZ | C+
GLPR
inh | S+
GLPRinh

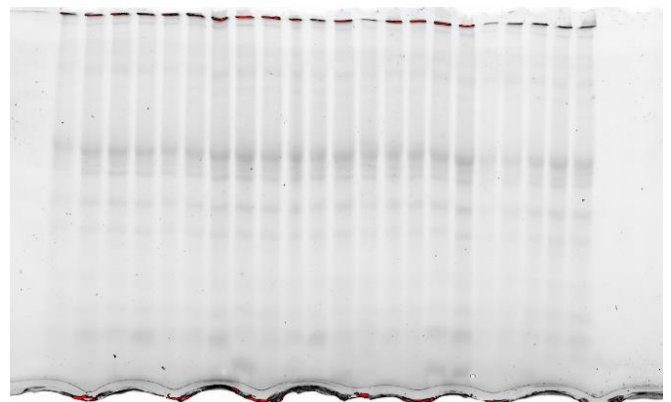
Total proteins on
gels visualized
using UV (TGX
Stain-Free 12%
gels) – Figure
2Aii

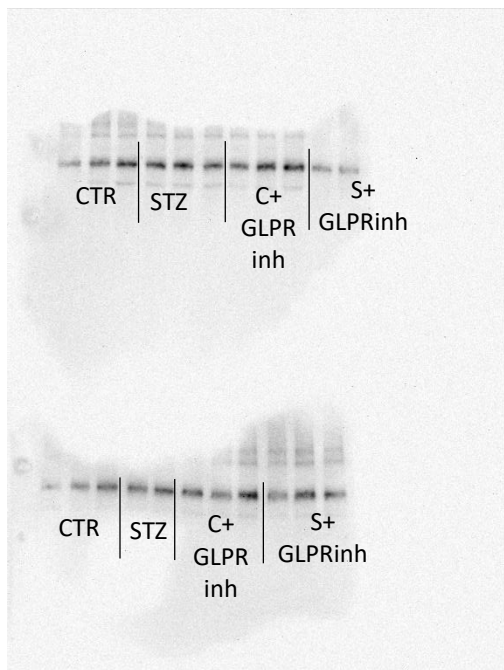


PDH– HPT - Figure 2Avi

Total proteins on gels visualized using UV
(TGX Stain-Free 12% gels) – Figure 2Avi

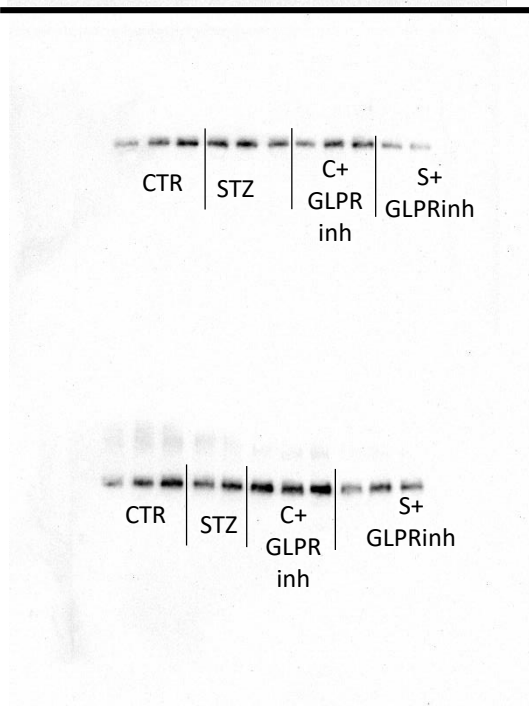
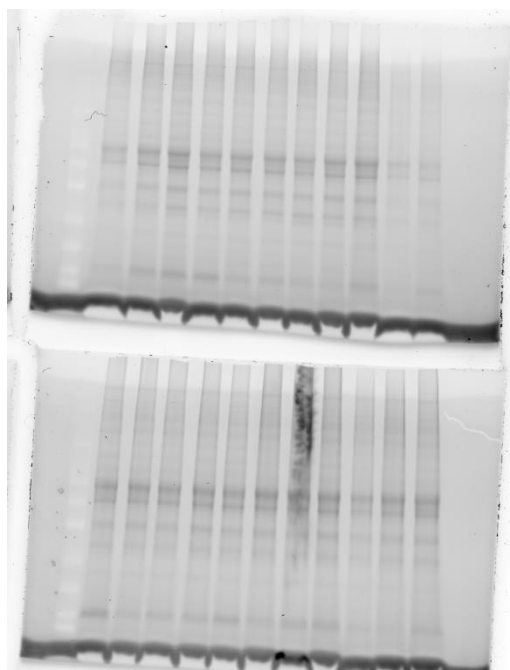
CTR | STZ | C+
GLPR
inh | S+
GLPRinh





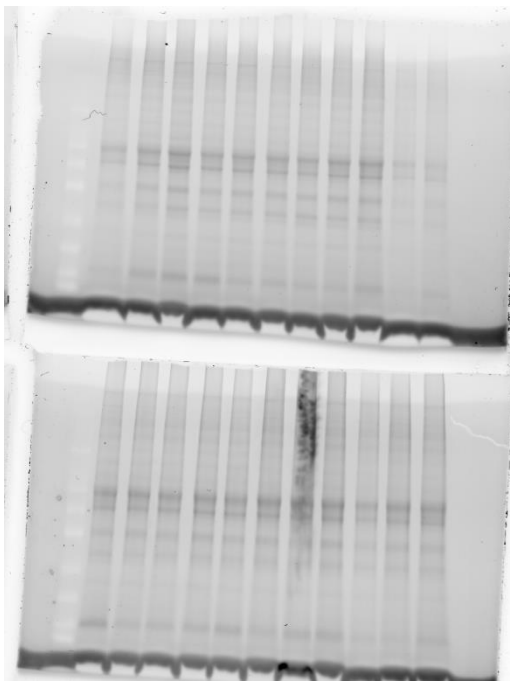
AMPK– HPT
Figure 3Aiv

Total proteins on
gels visualized
using UV (TGX
Stain-Free 12%
gels) – Figure
3Aiv



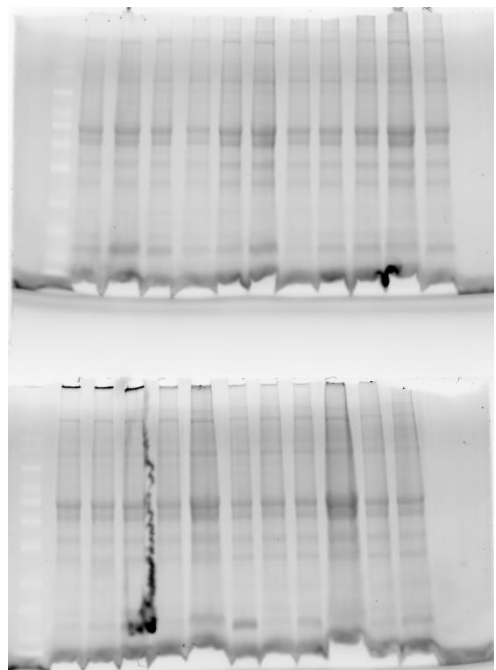
pAMPK– HPT
Figure 3Aii

Total proteins on
gels visualized
using UV (TGX
Stain-Free 12%
gels) – Figure
3Aii



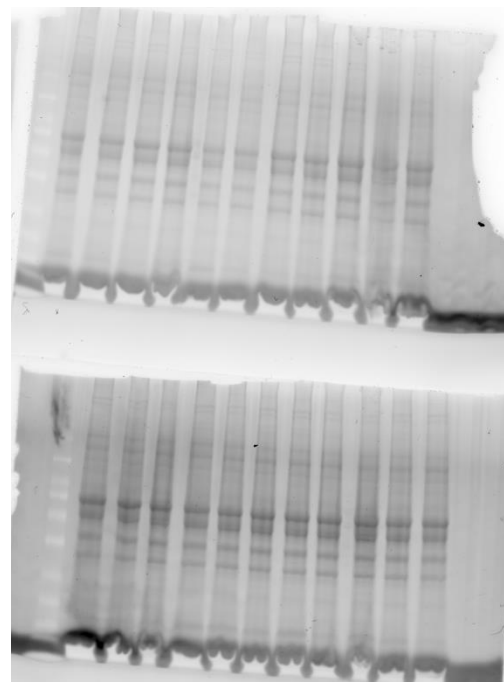
c-fos– HPT
Figure 4Aii

Total proteins on
gels visualized
using UV (TGX
Stain-Free 12%
gels) – Figure
4Aii



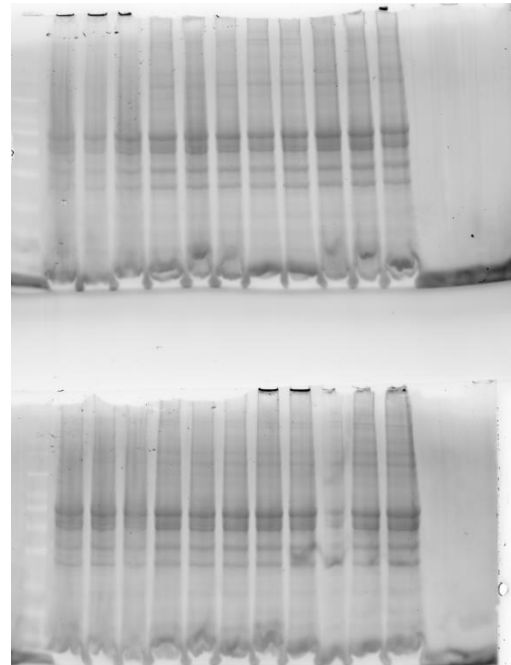
CytC– HPC Figure 2Biii

Total proteins on
gels visualized
using UV (TGX
Stain-Free 12%
gels) – Figure
2Biii



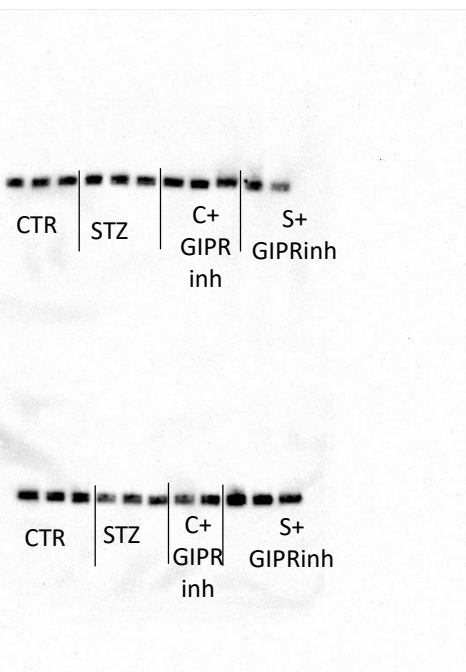
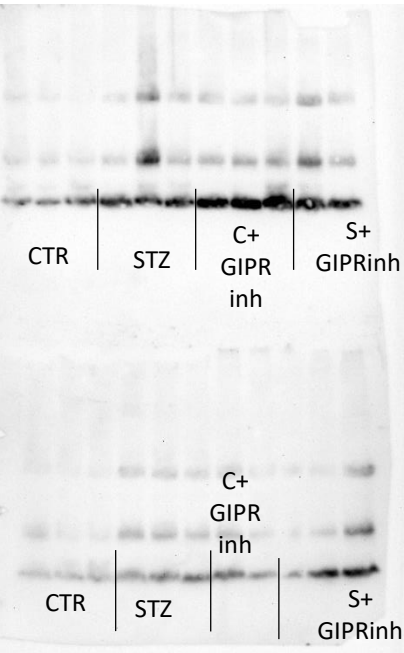
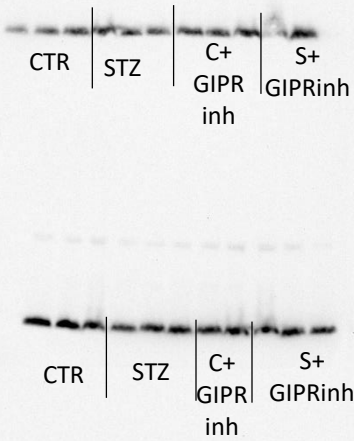
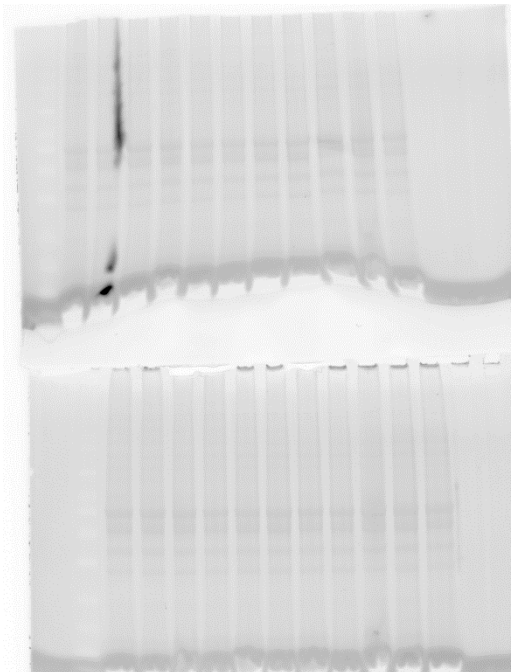
COXIV– HPC Figure 2Bi

Total proteins on
gels visualized
using UV (TGX
Stain-Free 12%
gels) – Figure 2Bi



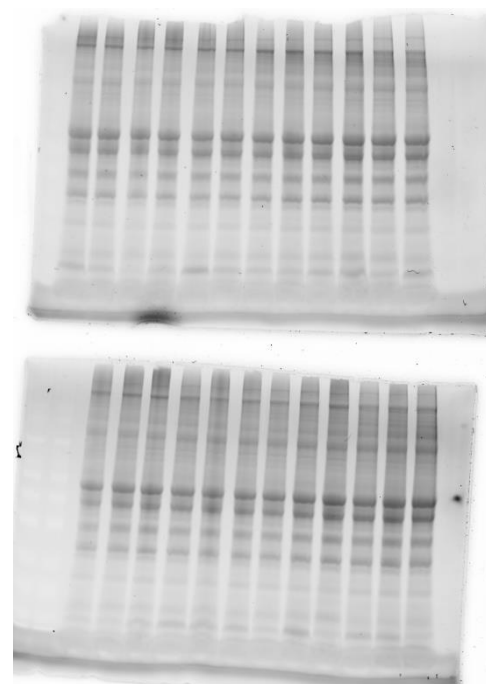
PDH– HPC Figure 2Bv

Total proteins on
gels visualized
using UV (TGX
Stain-Free 12%
gels) – Figure
2Bv



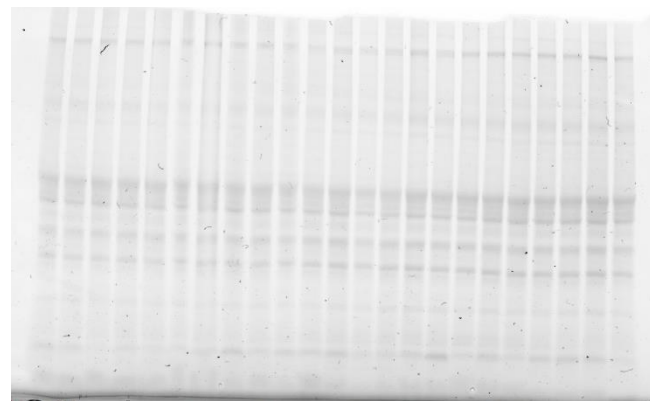
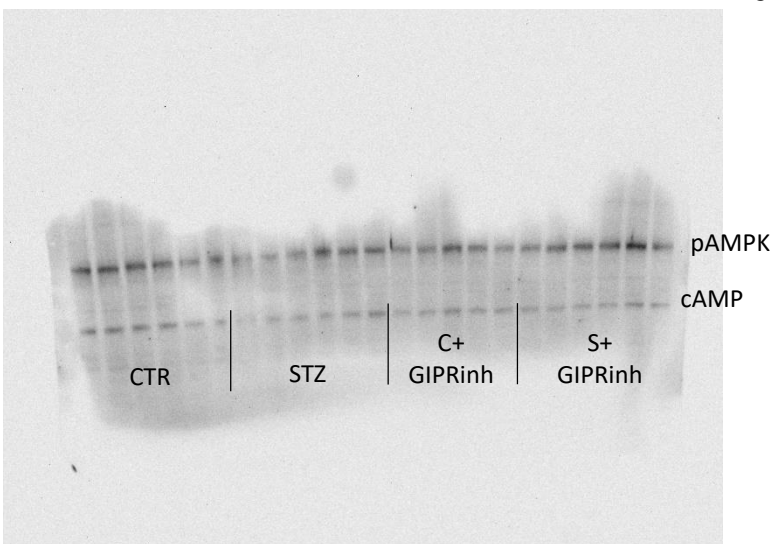
AMPK– HPC Figure 3Biii

Total proteins on
gels visualized
using UV (TGX
Stain-Free 12%
gels) – Figure
3Biii



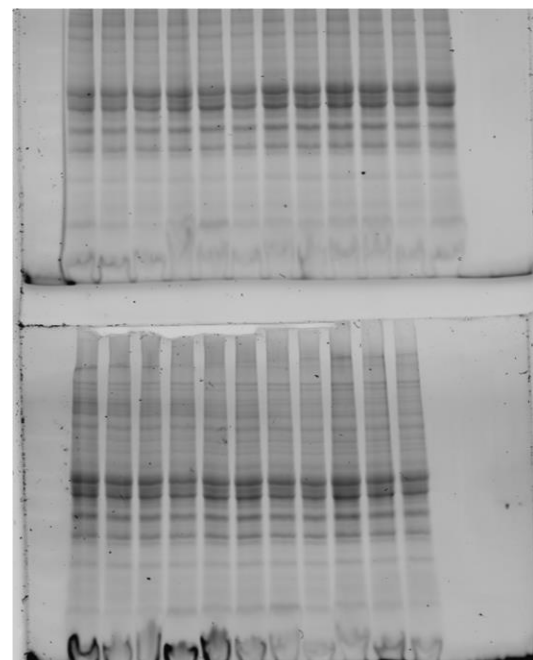
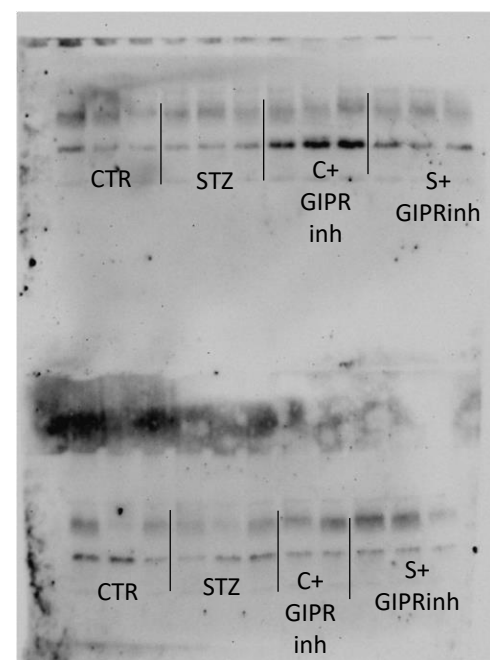
pAMPK and cAMP – HPC Figure 3Bi and 4Biii

Total proteins on gels visualized
using UV (TGX Stain-Free 12% gels)
– Figure 3Bi and 4Biii



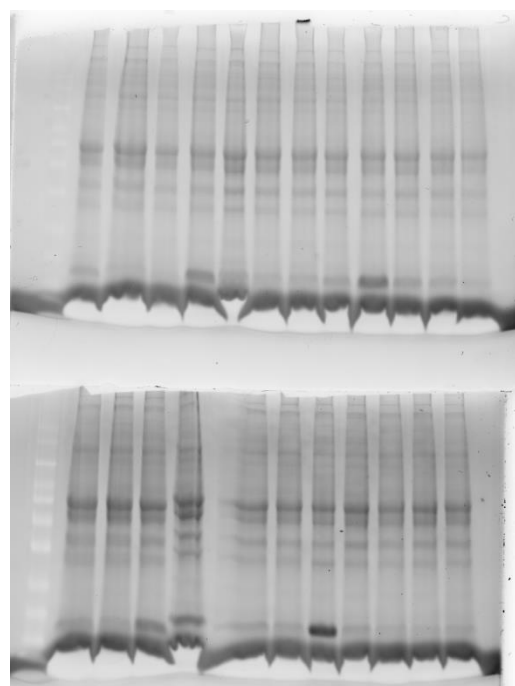
c-fos– HPC Figure 4Bi

Total proteins on
gels visualized
using UV (TGX
Stain-Free 12%
gels) – Figure 4Bi



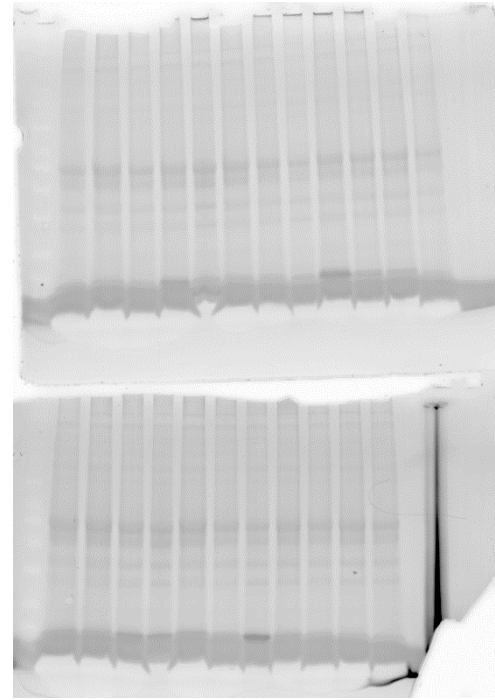
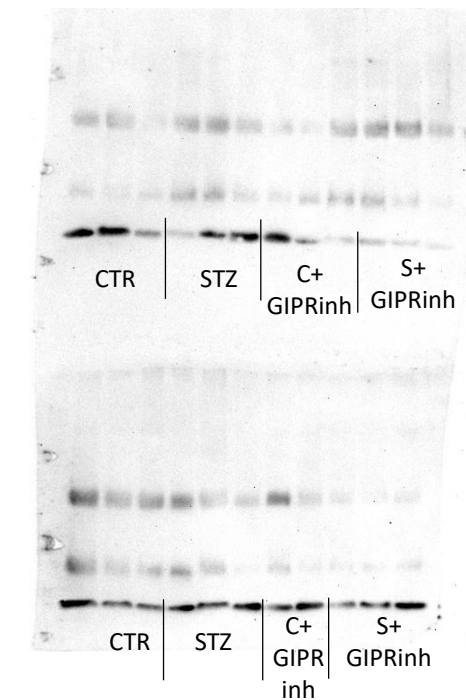
CytC– HPT Figure 2Bvi

Total proteins on
gels visualized
using UV (TGX
Stain-Free 12%
gels) – Figure
2Bvi



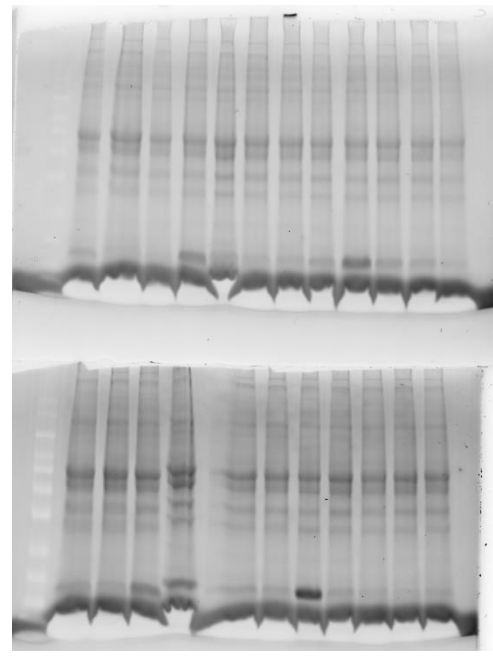
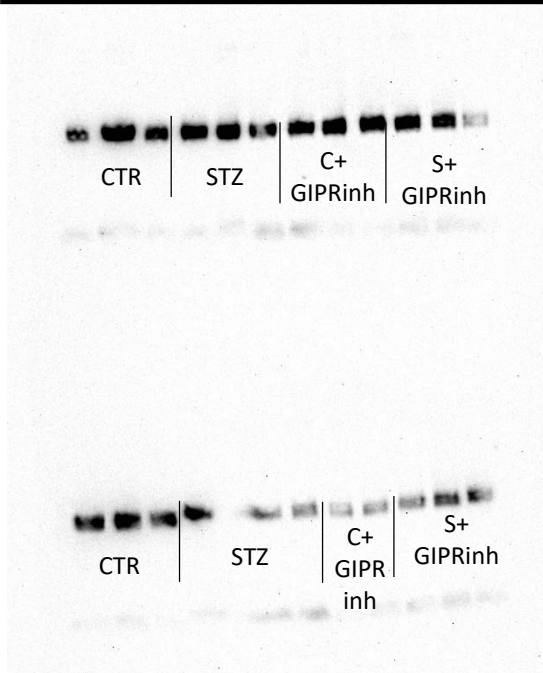
COXIV– HPT Figure 2Bii

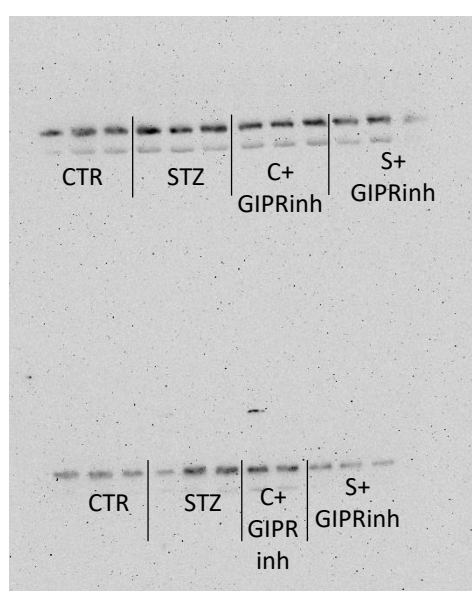
Total proteins on
gels visualized
using UV (TGX
Stain-Free 12%
gels) – Figure
2Bii



PDH – HPT Figure 2Bvi

Total proteins on
gels visualized
using UV (TGX
Stain-Free 12%
gels) – Figure
2Bvi

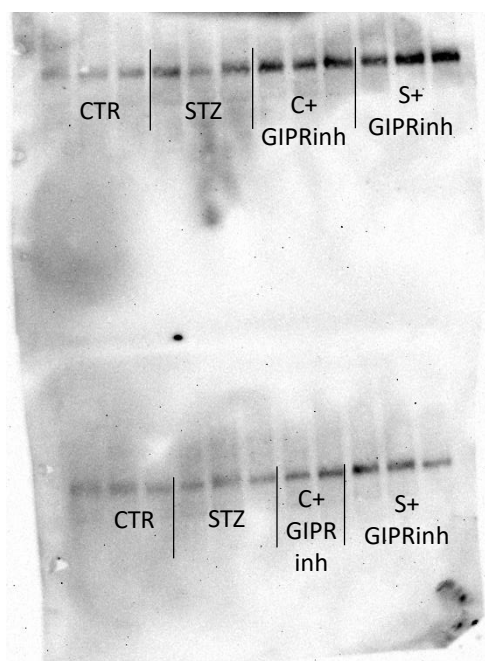
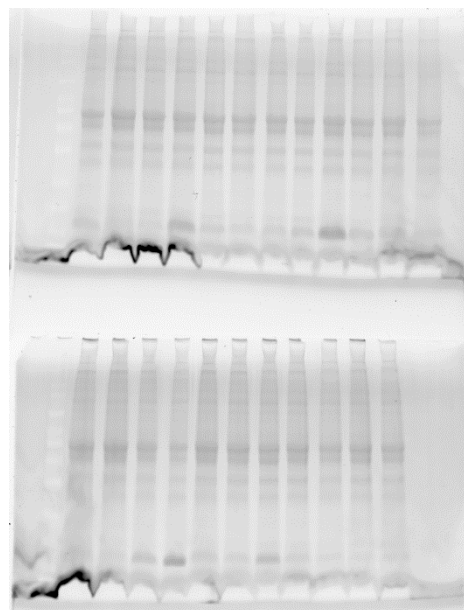




AMPK – HPT

Figure 3Bvi

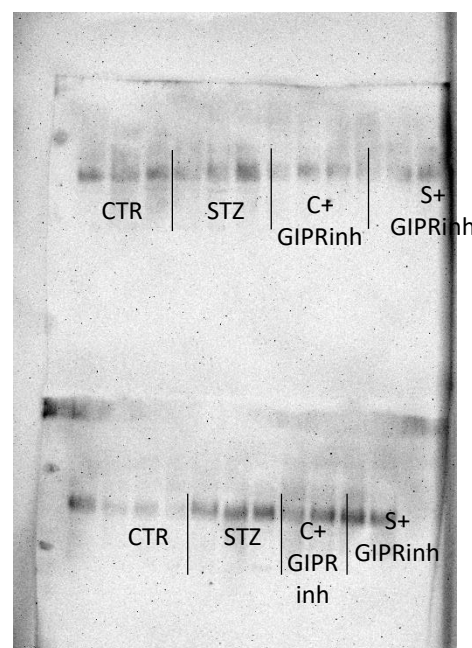
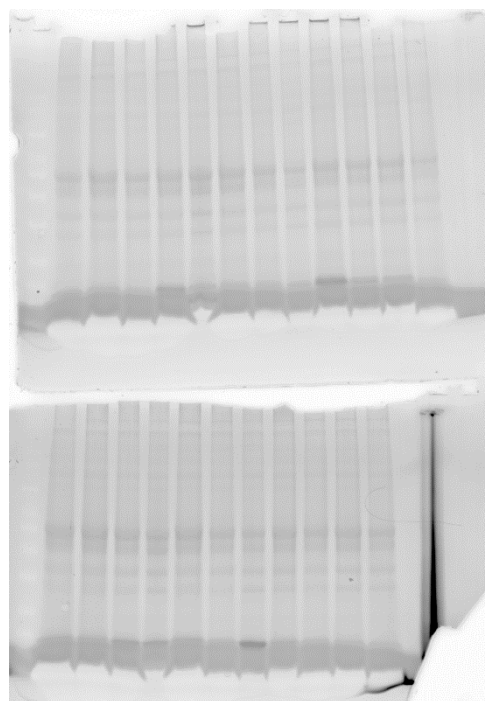
Total proteins on
gels visualized
using UV (TGX
Stain-Free 12%
gels) – Figure
3Bvi



pAMPK – HPT

Figure 3Bii

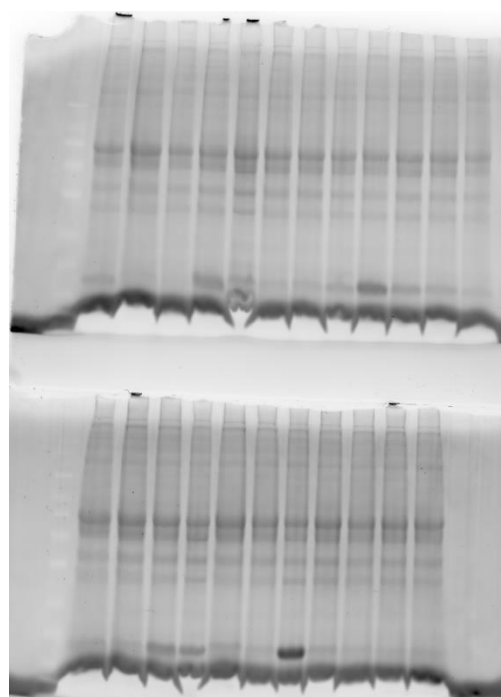
Total proteins on
gels visualized
using UV (TGX
Stain-Free 12%
gels) – Figure
3Bii



c-fos – HPT

Figure 4Bii

Total proteins on
gels visualized
using UV (TGX
Stain-Free 12%
gels) – Figure
4Bii



	Group	Animal ID	Glucose-plasma	Insulin-plasma	GLP1total-plasma	GLP1active-plasma	GIPTotal-plasma	GIPIActive-plasma	COXIV-HPC	CytC-HPC	PDH-HPC	pAMPK-HPC	tAMPK-HPC	p/tAMPK-HPC	cAMP-HPC	ATP-HPC	c-fos-HPC	COXIV-HPT	CytC-HPT	PDH-HPT	pAMPK-HPT	tAMPK-HPT	p/tAMPK-HPT	cAMP-HPT	ATP-HPT	c-fos-HPT
CTR		1	16.15716	3.375331	14.54458	2.1563	172.6468	3.982318	0.30629	1.21848	5.62748	2.28864	3.20843	0.713321	1.67199	17.7328	0.71776	2.26891	1.42809	1.29691	0.56496	0.82782	0.682467	0.177147	16.78641	0.87934
CTR		2	0.505749	1.06209	10.57815	1.799	182.3813	1.930009	0.34012	1.77628	6.45173	2.58621	3.26968	0.790967	1.72187	17.70701	0.53616	2.04399	0.78274	2.10202	0.64737	0.91549	0.70713	0.300959	13.66298	0.77445
CTR		3	12.34426	4.139353	10.12048	2.5676	285.0963	1.433134	0.41937	2.11734	6.33279	2.6898	2.15733	1.246819	1.66207	18.59073	0.4612	1.14519	0.73096	1.7626	0.80881	0.95798	0.844287	0.029653	17.7328	1.32279
CTR		4	18.33046		7.902568	2.3534	1993.656	2.059628	0.21744	0.80556	6.70185	2.08492	6.07105	0.34342	1.46833	20.61629	0.63505	1.35861	0.16235	0.65437	0.29238	0.31544	0.926896	0.905536	19.0378	1.09267
CTR		5	13.75628	4.16679	9.475059	2.0312	1978.216	1.800389	0.19208	0.89948	6.02194	1.65936	4.84452	0.342523	1.55227	25.33977	0.91066	0.64174	1.77754	0.79866	0.30611	0.43532	0.703184	0.164719	18.64315	0.24746
CTR		6	15.2964	3.68612	11.09449	1.9772	477.4352	1.930009	0.2261	0.84901	6.23385	2.51178	3.45996	0.725956	1.43548	15.88387	0.5265	0.65525	0.15336	0.60969	0.3226	0.48683	0.662654	0.08441	23.27395	0.19167
CTR		7	24.0537	3.751459	19.94268	2.7449	111.2192	2.059628																		
CTR		8	10.61243	1.001754	9.580673	2.2193	182.0456	4.068731																		
CTR		9	20.58334	2.513842	14.77928	2.078	111.8905	2.059628																		
CTR		10	13.24417	3.884683	13.26546	2.9312	253.2076	1.54115																		
STZ		11	18.8217	2.645205	8.735753	1.7864	1043.039	2.362074	0.66922	2.13557	6.64072	1.49714	1.81611	0.824366	0.71154	28.85995	0.40806	0.54765	0.31229	1.8902	0.8515	1.36283	0.624803	0.352947	21.6275	0.78438
STZ		12	16.50362	0.867434	4.335128	1.56284	2307.844	3.053379	0.55675	2.19272	6.91686	1.30859	2.11284	0.619351	0.70282	18.64315	0.39705	1.15022	0.45641	1.7065	0.60043	1.18838	0.505251	0.163016	17.88782	0.62596
STZ		13	18.54234	0.893865	8.946983	1.7864	666.4174	1.951612	0.71317	1.80282	6.95927	1.59522	1.08901	1.464835	0.87765	19.72826	0.62567	1.31904	0.97104	1.02481	0.89727	1.37405	0.653011	0.287707	16.9642	1.08798
STZ		14	17.06281	0.815105	10.30824	1.9772	459.309	2.340471	0.22721	0.83798	3.76782	2.18685	2.60113	0.840731	1.00623	17.60395	0.45853	0.88432	0.2738	0.50313	0.29466		0.706754	0.507775	17.19365	0.1525
STZ		15	17.4091	0.925177	11.77512	2.375	126.66	2.858948	0.33388	1.0767	4.66911	1.90345	1.82005	1.045823	1.00018	19.19642	0.58064	0.53323	0.47073	0.1959	0.35561	0.77619	0.458148	0.1986	18.17313	0.42675
STZ		16	15.22634	8.971501	16.44565	2.1104	75.97386	1.865199	0.32027	1.09486	4.6343	1.744	1.79973	0.969034	1.08284	21.54489	0.7213	0.86109	0.44169	0.2143	0.3893	0.79962	0.486856	0.082674	17.55249	0.7283
STZ		17	0.7030201	5.416866	11.10622	1.9259	249.8509																			
STZ		18	12.36048	0.06687	5.731593	2.1932	2060.119	2.686123																		
STZ		19	26.17888	2.962806	6.024968	2.0195	1838.913	2.102835																		
STZ		20	14.54072	0.13975	11.29398	2.7584	1476.725	1.973216																		
CTR+GIPRinh		21	20.07588	9.80827	13.96956	2.7575	3839.506	513.8839	1.12782	1.69243	7.91797	1.95743	1.51031	1.296045	1.07921	24.4427	1.26716	1.72214	0.9747	1.48728	1.50967	1.14214	1.321791	0.302003	22.45946	0.31099
CTR+GIPRinh		22	30.70064	4.658765	8.841368	1.9484	119.6109	204.1796	1.17078	1.38191	7.76871	1.60512	1.20898	1.327665	0.67709	29.16595	1.86042	0.66165	0.72468	1.91676	1.74902	1.19807	1.459865	0.51308	17.14257	0.68214
CTR+GIPRinh		23	15.03968	4.183654	12.43228	2.1176	170.6328	763.963	1.18416	1.49602	7.49287	1.46062	1.55315	0.940424	0.94836	27.34795	1.69186	0.21332	0.55147	1.73015	1.43543	1.11345	1.289173	0.017333	19.80845	0.77743
CTR+GIPRinh		24	15.05425	8.517301	13.19505	2.294	2313.886	838.9911	0.40834	1.27246	5.04308	1.24017	2.06791	0.59972	0.76572	18.17313	0.57071	0.54314	0.22433	0.12814	0.46019	0.78604	0.585454	0.100025	19.8352	0.81718
CTR+GIPRinh		25	25.01343	8.748527	17.43139	2.3633	4157.05	191.3689	0.23526	1.36786	5.62154	0.93372	1.53328	0.608969	0.8094	16.03363	0.54006	0.70594	0.3841	0.14433	0.52451	0.62982	0.832793	0.269381	12.78941	0.75771
CTR+GIPRinh		26	16.8091	3.513341	9.568938	2.3291	2263.2	855.2584																		
CTR+GIPRinh		27	11.73835	5.661367	6.212727		4012.04	80.84668																		
CTR+GIPRinh		28	12.94242	8.359073	11.81032	2.6342	2020.846	430.9489																		
STZ+GIPRinh		29	16.52353	6.299046	13.35934	2.7395	2680.102	129.2812	0.75277	0.90645	7.07201	0.9315	1.83944	0.506404	0.57437	20.15718	0.89172	0.32908	0.89955	1.49764	1.36467	0.89943	1.517261	0.346887	17.52678	0.59996
STZ+GIPRinh		30	37.42585	9.337687	1.811682	2.2256	2938.232	119.6677	0.60063	1.39082	6.08089	1.15839	2.34612	0.493747	0.66963	18.38155	0.75319	0.15421	0.67796	1.26015	1.76014	0.78422	2.244447	0.254857	20.50795	0.77595
STZ+GIPRinh		31	12.18244	7.294388	9.181682	2.2904	1519.019	239.825	0.36834	1.11113	6.74139	0.91181	1.59753	0.570762	0.52914	22.48737	0.59852	0.1519	0.6944	0.3199	2.37542	0.2807		0.349298	17.86195	1.52897
STZ+GIPRinh		32	15.90128	6.535737	3.847472	1.7666	3077.871	215.6276	0.61495	1.11281	5.54052	0.96535	2.35773	0.40944	0.84283	24.41395	0.50524	0.33241	0.51683	0.22737	0.71701	0.49499	1.448534	0.163016	14.77194	0.94229
STZ+GIPRinh		33	12.15337	6.569736	4.921877	2.0573	2182.974	289.0804	0.65378	1.0806	5.68357	1.28222	2.18765	0.586118	0.80069	28.67693	0.55699	0.47544	0.39487	0.39676	0.58044	0.30758	1.887119		22.45946	1.08856
STZ+GIPRinh		34	5.126925	1.526362	7.069383	3.977	2105.099	51.0342				0.6977	1.32045	0.52838	0.85429		0.37789	0.79474	0.72208	0.27755	0.46538	0.2024	2.299308	0.139004	20.72481	0.73294
STZ+GIPRinh		35	24.12253	6.113601	5.555568	2.0654	2382.698	368.3427																		
STZ+GIPRinh		36	32.60823	7.940767	8.888308	3.347	2443.79	446.2008																		
STZ+GIPRinh		37	8.887614	6.568378	7.069383	2.3147	2364.908	115.6927																		
STZ+GIPRinh		38	16.24307	3.484942	19.97788	2.8565	2771.068	286.9417																		

Confirmation of Publication and Licensing Rights

December 27th, 2021
Science Suite Inc.

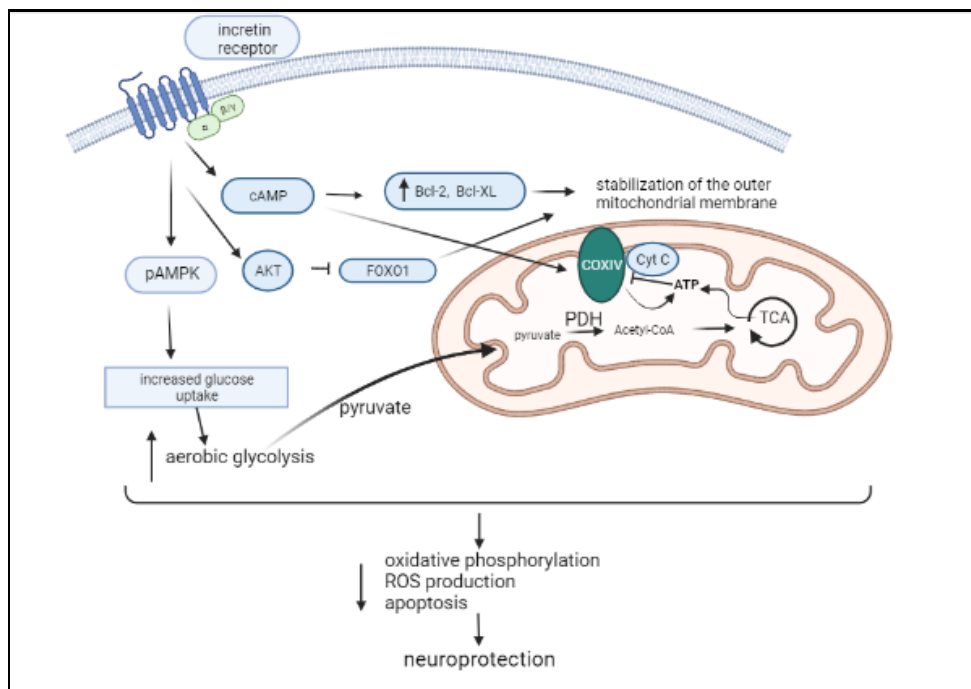
Subscription: Student Plan
Agreement number: FQ23D8RUNI
Journal name: International Journal of Molecular Sciences

To whom this may concern,

This document is to confirm that Anthony Farma has been granted a license to use the BioRender content, including icons, templates and other original artwork, appearing in the attached completed graphic pursuant to BioRender's [Academic License Terms](#). This license permits BioRender content to be sublicensed for use in journal publications.

All rights and ownership of BioRender content are reserved by BioRender. All completed graphics must be accompanied by the following citation: "Created with BioRender.com".

BioRender content included in the completed graphic is not licensed for any commercial uses beyond publication in a journal. For any commercial use of this figure, users may, if allowed, recreate it in BioRender under an Industry BioRender Plan.



For any questions regarding this document, or other questions about publishing with BioRender refer to our [BioRender Publication Guide](#), or contact BioRender Support at support@biorender.com.

Confirmation of Publication and Licensing Rights

December 21st, 2021

Science Suite Inc.

Subscription:

Student Plan

Agreement number:

WA23CFFHT9

Journal name:

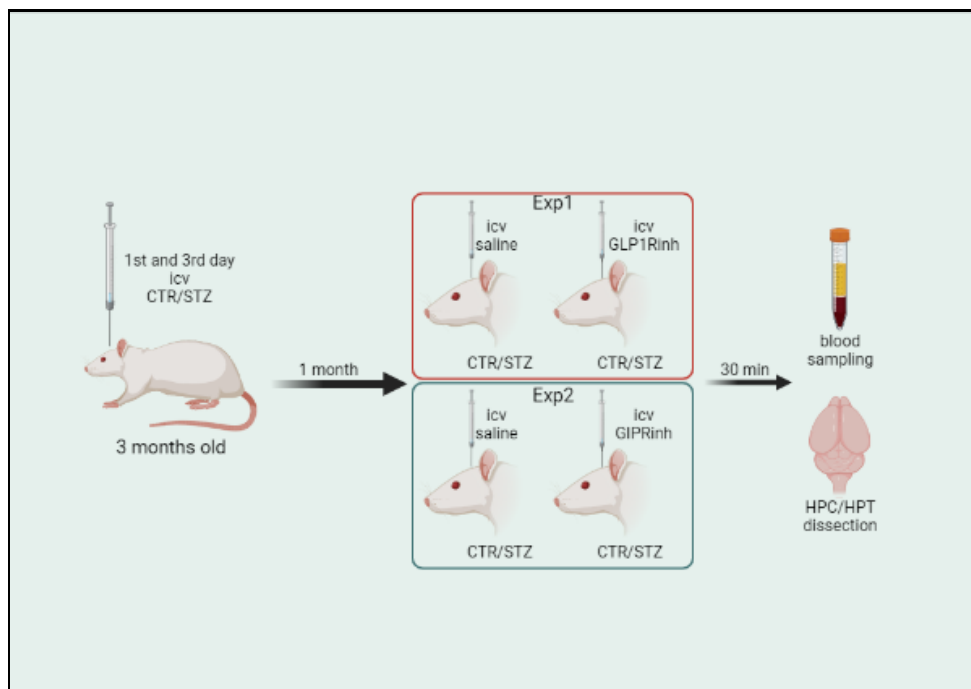
international journal of molecular sciences

To whom this may concern,

This document is to confirm that Anthony Farma has been granted a license to use the BioRender content, including icons, templates and other original artwork, appearing in the attached completed graphic pursuant to BioRender's [Academic License Terms](#). This license permits BioRender content to be sublicensed for use in journal publications.

All rights and ownership of BioRender content are reserved by BioRender. All completed graphics must be accompanied by the following citation: "Created with BioRender.com".

BioRender content included in the completed graphic is not licensed for any commercial uses beyond publication in a journal. For any commercial use of this figure, users may, if allowed, recreate it in BioRender under an Industry BioRender Plan.



For any questions regarding this document, or other questions about publishing with BioRender refer to our [BioRender Publication Guide](#), or contact BioRender Support at support@biorender.com.