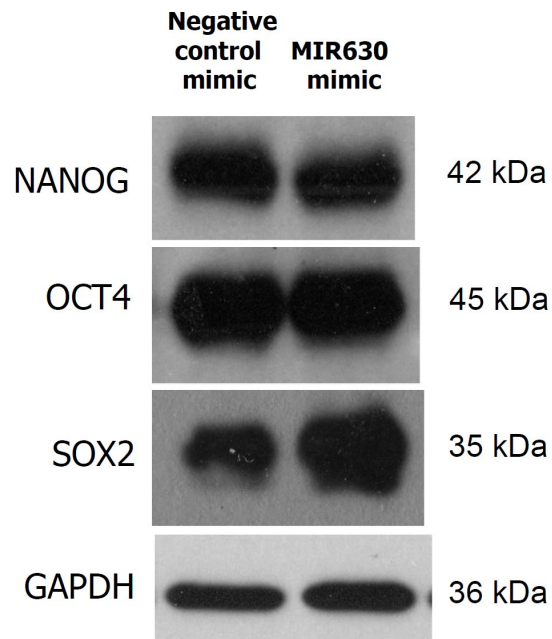


**Figure S1.** Activation of PKC leads to the induction of MIR630 levels. NT2/D1 cells were treated with 50 nM PMA, pretreated with 25  $\mu$ M BIM-I for 30 min prior to the addition of PMA, or treated with BIM-I alone for 24 h. MIR630 expression levels were assessed by RT-qPCR, as described in Materials and Methods. Values were normalized with  $\beta$ 2-microglobulin mRNA. Significance was tested using one-way analysis of variance (ANOVA) with Holm–Sidak method post hoc test, where \* denotes  $P < 0.05$ ; \*\* denotes  $P < 0.01$  compared with control; where ## denotes  $P < 0.01$  compared with cells treated with PMA and “BIM-I+PMA”.



**Figure S2.** MIR630 mimics did not abolished the overexpression of ectopic NANOG, OCT4 and SOX2. NCCIT cells were cotransfected with pCMV-NANOG, pCMV-OCT4 and pCMV-SOX2 (all at 0.2  $\mu$ g/ml) along with MI630 mimic or negative control mimic. Cell lysates were prepared 24 h after treatment and analyzed by Western blotting with anti-NANOG, anti-OCT4, anti-SOX2 and anti-GAPDH antibodies.