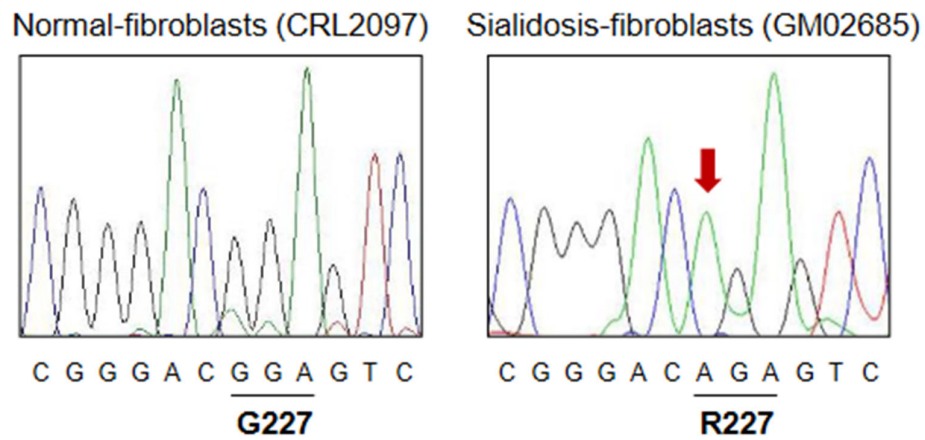


# Supplementary Materials

## Supplementary Figures



**Supplementary Figure S1.** Confirmation of DNA sequences of the *NEU1* gene in normal and sialidosis patient fibroblasts carrying the G227R mutation in *NEU1*.



**Supplementary Figure S2.** Representative G-banding karyotype images of normal- and sialidosis-iPSCs (G227R- and V275A/R347Q-iPSCs) at passages 20–25.

**Table 1.** STR profiles of normal- and sialidosis-iPSCs and their parental cells.

[illegible]

**Table 2.** List of antibodies used in this study.

Antibodies	Target Protein	Company (Cat. No.)	Dilution
Primary antibodies	$\alpha$ -SMA	Sigma (A5228)	1 : 200
	DESMIN	Chemicon (AB907)	1 : 50
	FOXA2	Millipore (07-633)	1 : 100
	GFAP	Abcam (ab134436)	1 : 1000
	LAMP1	Abcam (ab25630)	1 : 1000
	MAP2	Sigma (M1406)	1 : 1000
	NANOG	R&D (AF1997)	1 : 40
	NESTIN	Millipore (MAB5326)	1 : 100
	NEU1	Rockland Immunochemicals (100-401-396)	1 : 100
	O4	R&D (MAB1326)	1 : 100
	Oct3/4	Santa Cruz (sc-9081)	1 : 100
	OLIG-2	Abcam (AB9610)	1 : 500
	PPCA	Abcam (ab184553)	1 : 10000
	SOX17	R&D (MAB1924)	1 : 50
	SSEA-3	R&D (MAB1434)	1 : 30
	SSEA-4	Millipore (MAB1435)	1 : 30
	TRA-1-60	Millipore (MAB4360)	1 : 100
	TRA-1-81	Millipore (MAB4381)	1 : 100
	TUJ1	Biolegend (802001)	1 : 500
Secondary antibodies	Chicken anti-rabbit IgG	Invitrogen (A21442)	1 : 200
	Chicken anti-goat IgG	Invitrogen (A21467)	1 : 200
	Goat anti-mouse IgM	Invitrogen (A21044)	1 : 200
	FITC mouse anti-rat IgM	BD Pharmingen (553887)	1 : 200
	Donkey anti-mouse IgG	Invitrogen (A21202)	1 : 200
	FITC rat anti-mouse IgM	BD Pharmingen (553437)	1 : 200
	Goat anti-rabbit IgG-HRP	Santa Cruz (SC-2004)	1 : 10000
	Goat anti-mouse IgG -HRP	Ab Frontier (LF-SA8001)	1 : 10000