

# Screening of Self-Assembling of Collagen IV Fragments into Stable Structures Potentially Useful in Regenerative Medicine – Supplementary Materials

Marcin Kolasa <sup>1</sup>, Grzegorz Galita <sup>2</sup>, Ireneusz Majsterek <sup>2</sup>, Ewa Kucharska <sup>3</sup>, Katarzyna Czerczak <sup>4</sup>, Joanna Wasko <sup>4</sup>, Angelika Becht <sup>4</sup>, Justyna Fraczyk <sup>4</sup>, Anna Gajda <sup>4</sup>, Lukasz Pietrzak <sup>5</sup>, Lukasz Szymanski <sup>5</sup>, Agnieszka Krakowiak <sup>6</sup>, Zbigniew Draczynski <sup>7</sup> and Beata Kolesinska <sup>4,\*</sup>

<sup>1</sup> General Command of the Polish Armed Forces, Medical Division, Zwirki i Wigury 103/105, 00-912 Warsaw, Poland; makolasa@ron.mil.pl

<sup>2</sup> Department of Clinical Chemistry and Biochemistry, Medical University of Lodz, Narutowicza 60, 90-136 Lodz, Poland; grzegorz.galita@umed.lodz.pl (G.G.); ireneusz.majsterek@umed.lodz.pl (I.M.)

<sup>3</sup> Department Geriatrics and Social Work, Jesuit University Ignatianum in Cracow, Kopernika 26, 31-501 Krakow, Poland; ewa.kucharska@ignatianum.edu.pl

<sup>4</sup> Institute of Organic Chemistry, Faculty of Chemistry, Lodz University of Technology, Zeromskiego 116, 90-924 Lodz, Poland; katarzyna.czerczak@dokt.p.lodz.pl (K.C.); joanna.wasko@p.lodz.pl (J.W.); anglika.becht@dokt.p.lodz.pl (A.B.); justyna.fraczyk@p.lodz.pl (J.F.); anna.gajda@p.lodz.pl (A.G.)

<sup>5</sup> Institute of Mechatronics and Information Systems, Faculty of Electrical, Electronic, Computer and Control Engineering, Lodz University of Technology, Stefanowskiego 18/22, 90-924 Lodz, Poland; lukasz.pietrzak@p.lodz.pl (L.P.); lukasz.szymanski@p.lodz.pl (L.S.)

<sup>6</sup> Centre of Molecular and Macromolecular Studies of the Polish Academy of Sciences, Department of Bioorganic Chemistry, Sienkiewicza 112, 90-363 Lodz, Poland; akrakow@cbmm.lodz.pl

<sup>7</sup> Institute of Material Sciences of Textiles and Polymer Composites, Faculty of Material Technologies and Textile Design, Lodz University of Technology, Zeromskiego 116, 90-924 Lodz, Poland; zbigniew.draczynski@p.lodz.pl

\* Correspondence: beata.kolesinska@p.lodz.pl; Tel.: 48-42-631-32-61

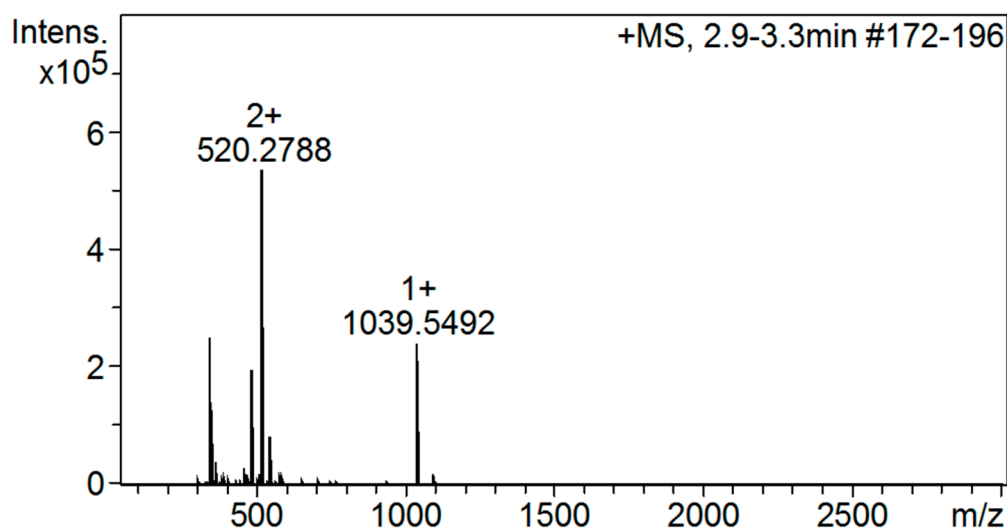


Figure S1. MS spectrum of peptide 1.

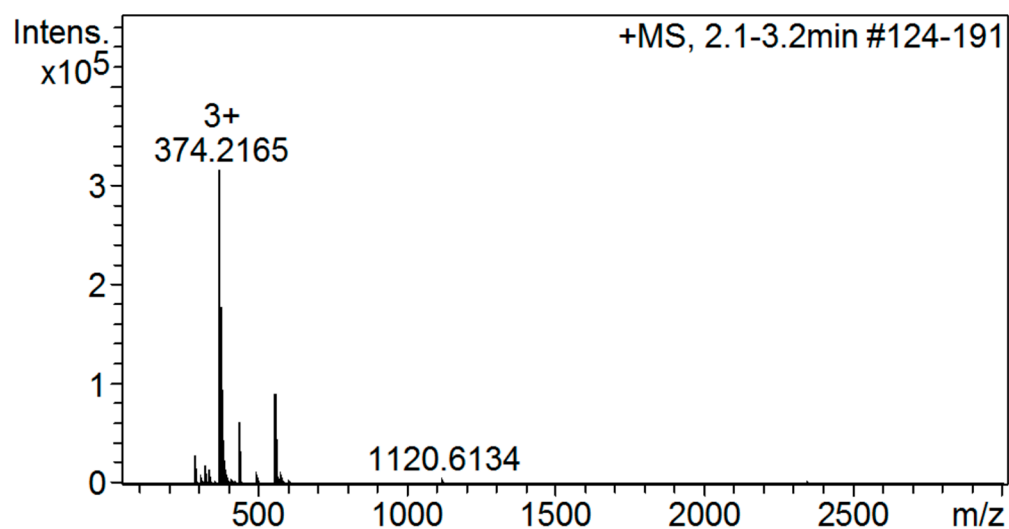


Figure S2. MS spectrum of peptide 2.

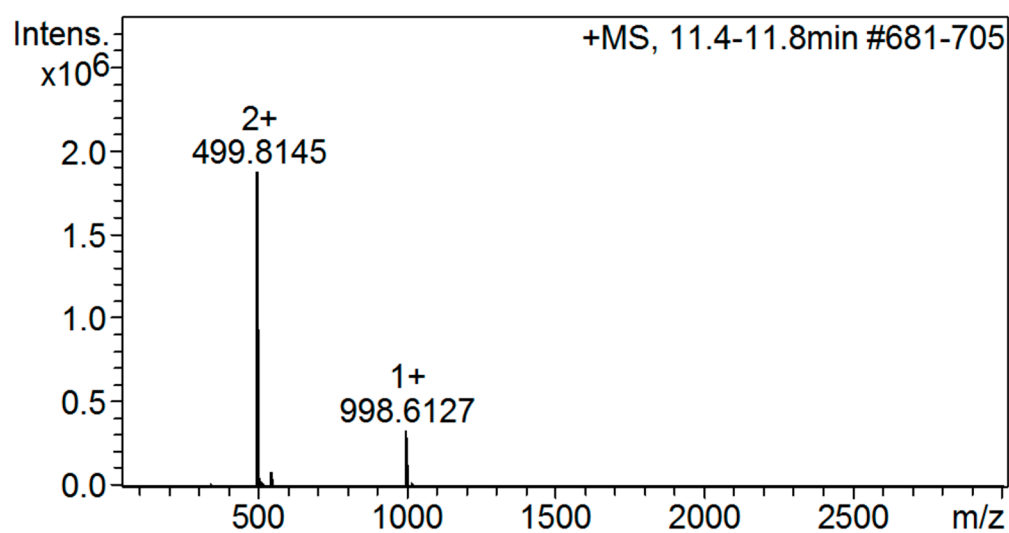


Figure S3. MS spectrum of peptide 3.

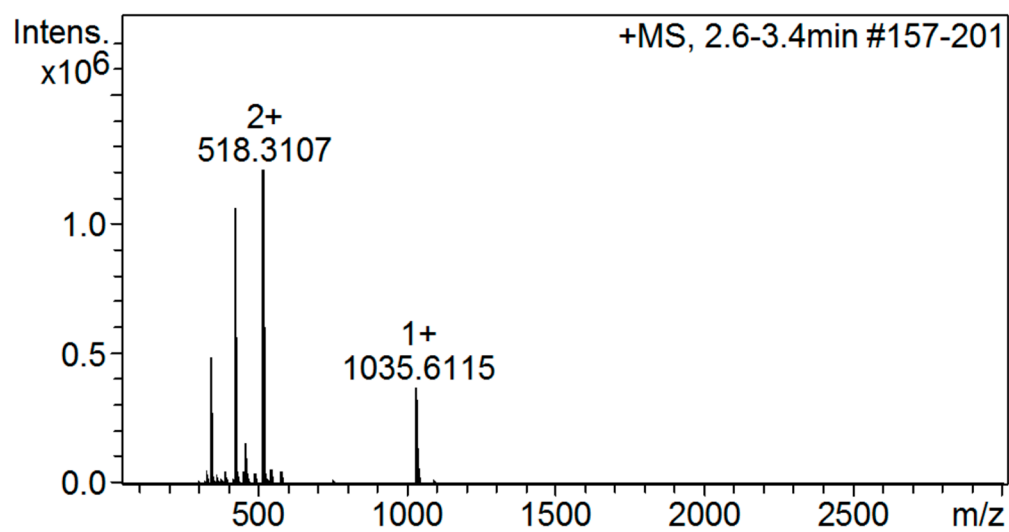


Figure S4. MS spectrum of peptide 4.

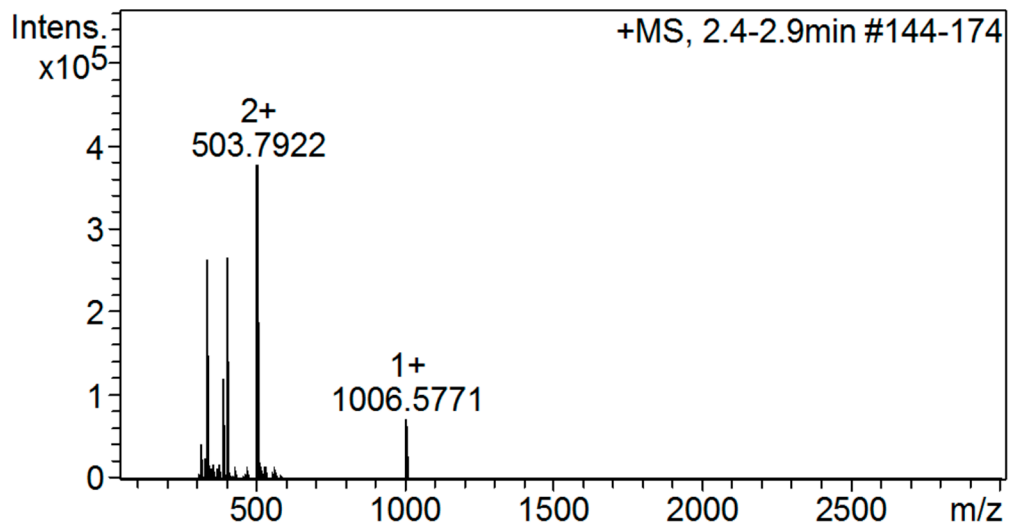


Figure S5. MS spectrum of peptide 5.

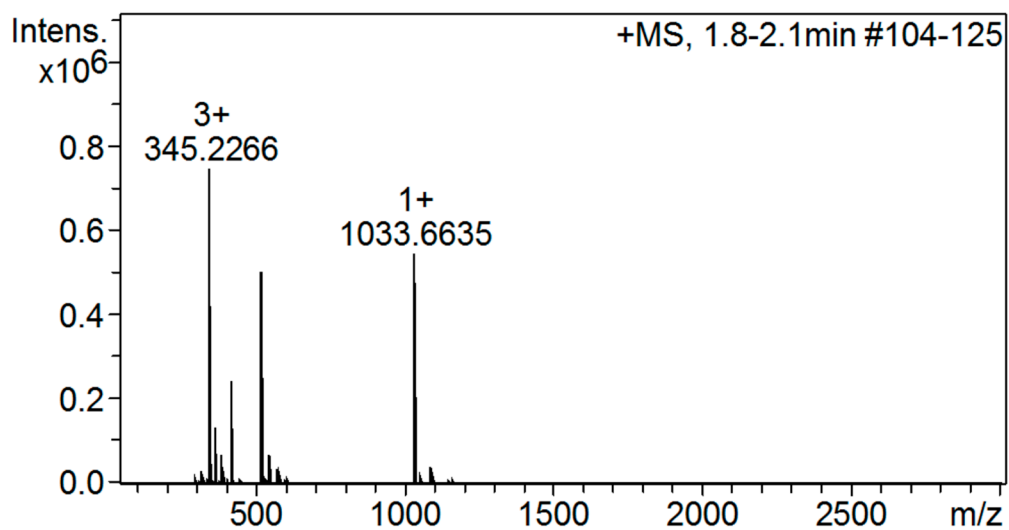


Figure S6. MS spectrum of peptide 6.

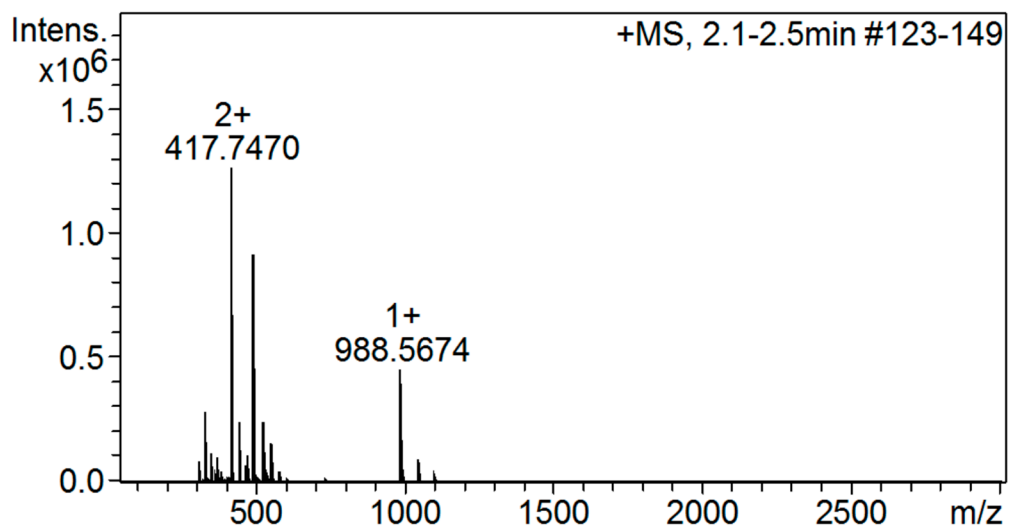


Figure S7. MS spectrum of peptide 7.

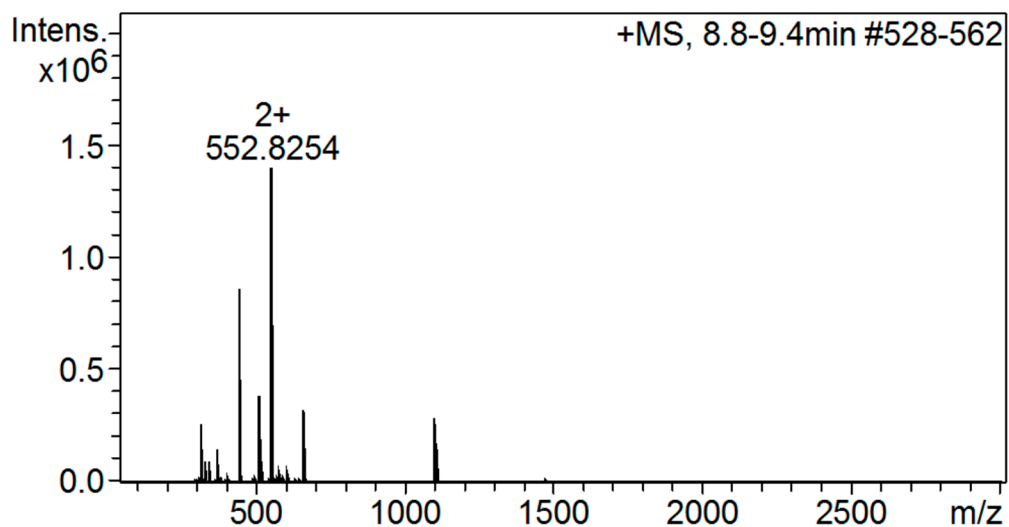


Figure S8. MS spectrum of peptide 8.

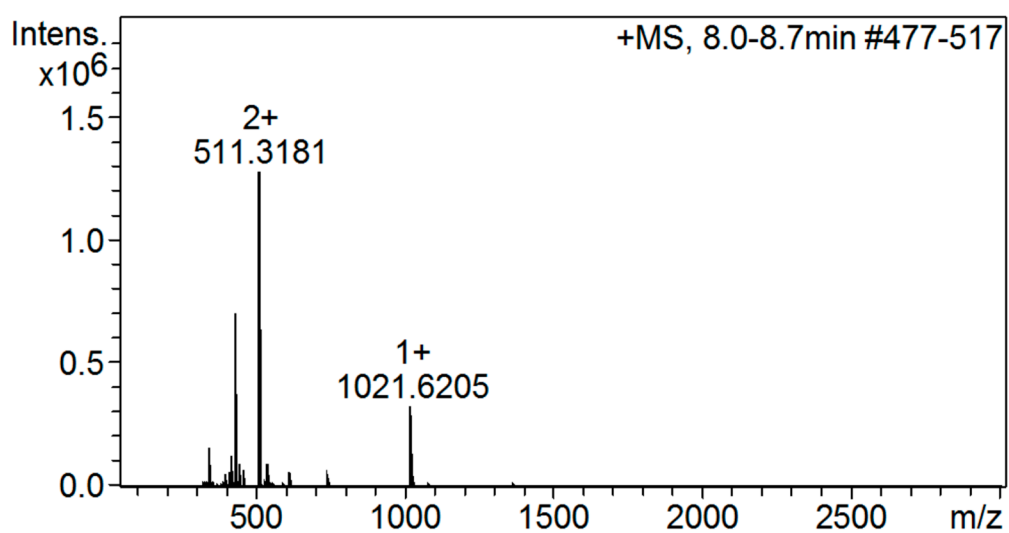


Figure S9. MS spectrum of peptide 9.

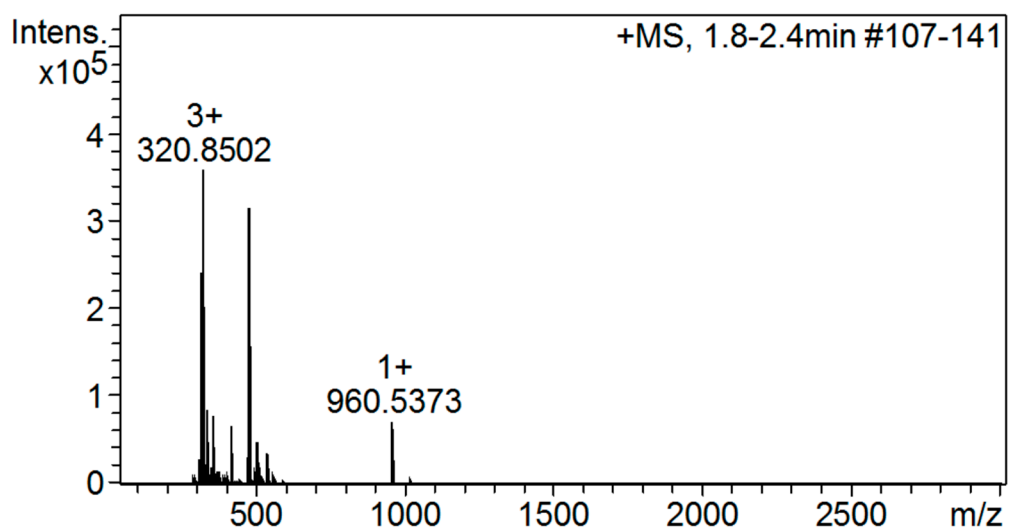


Figure S10. MS spectrum of peptide 10.



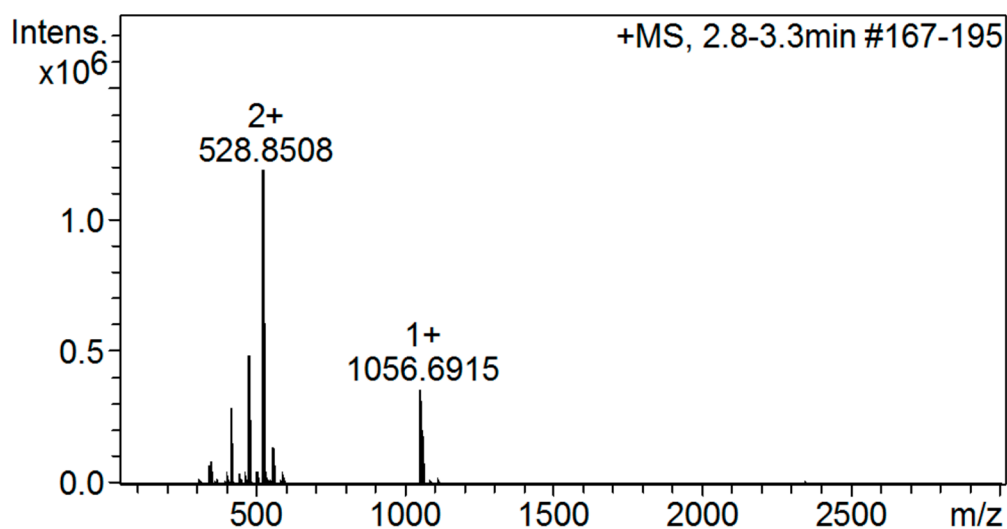


Figure S11. MS spectrum of peptide 11.

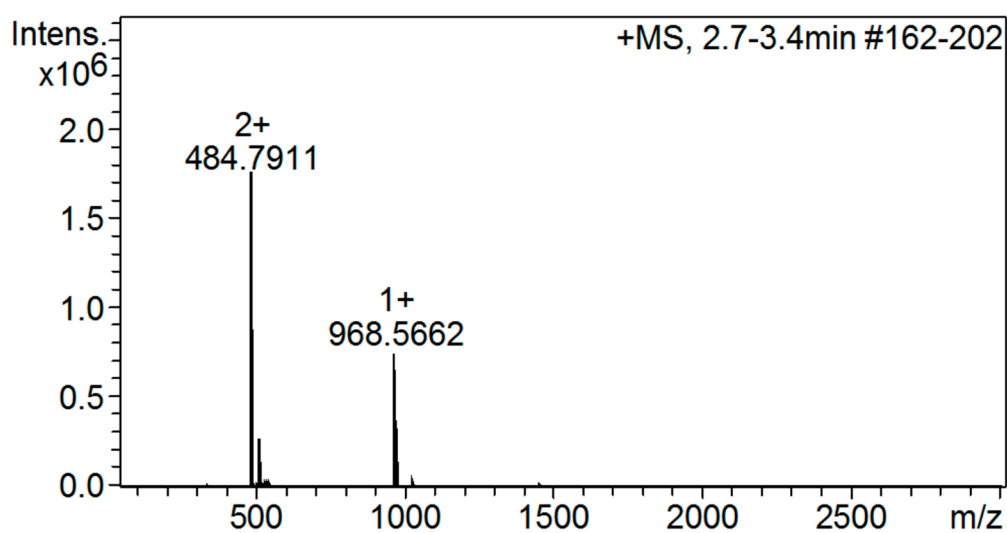


Figure S12. MS spectrum of peptide 12.

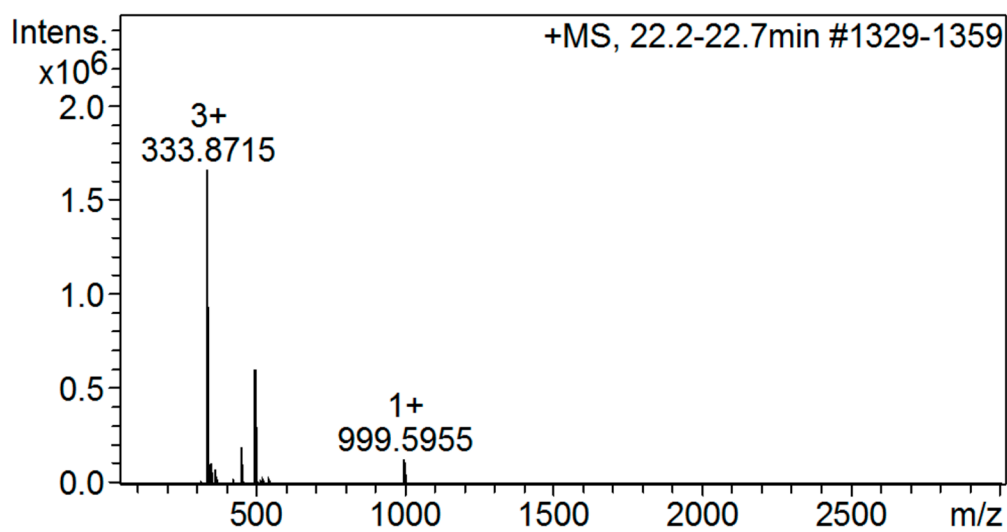


Figure S13. MS spectrum of peptide 13.

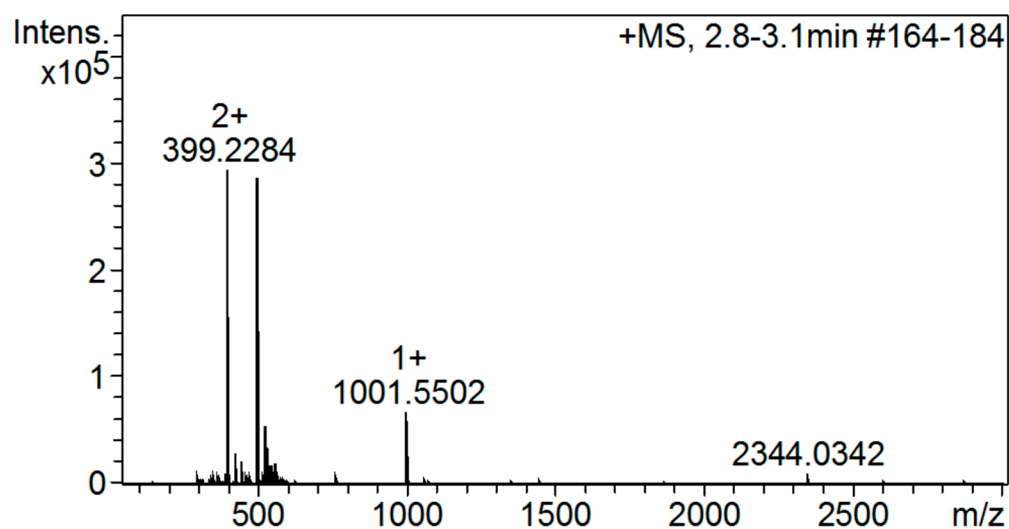


Figure S14. MS spectrum of peptide 14.

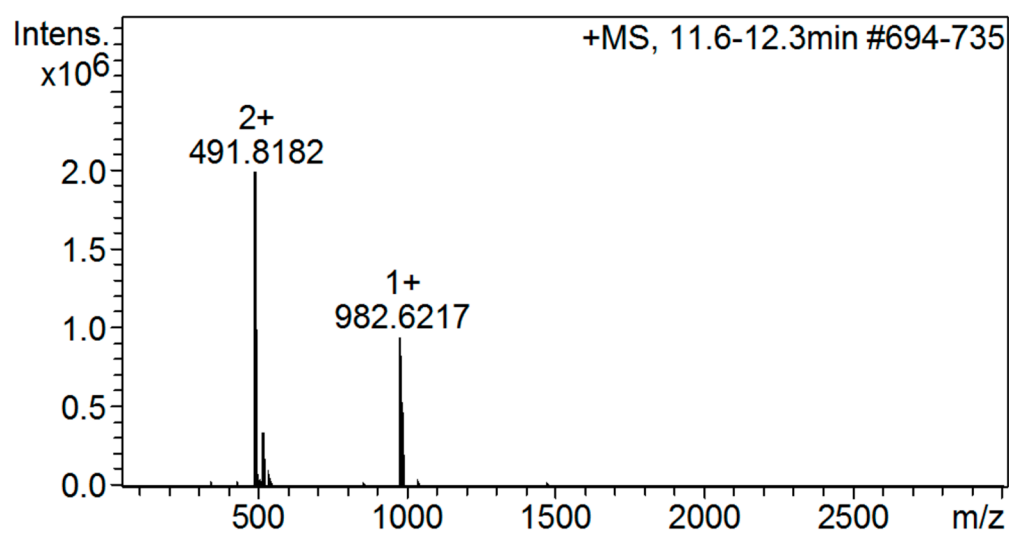


Figure S15. MS spectrum of peptide 15.

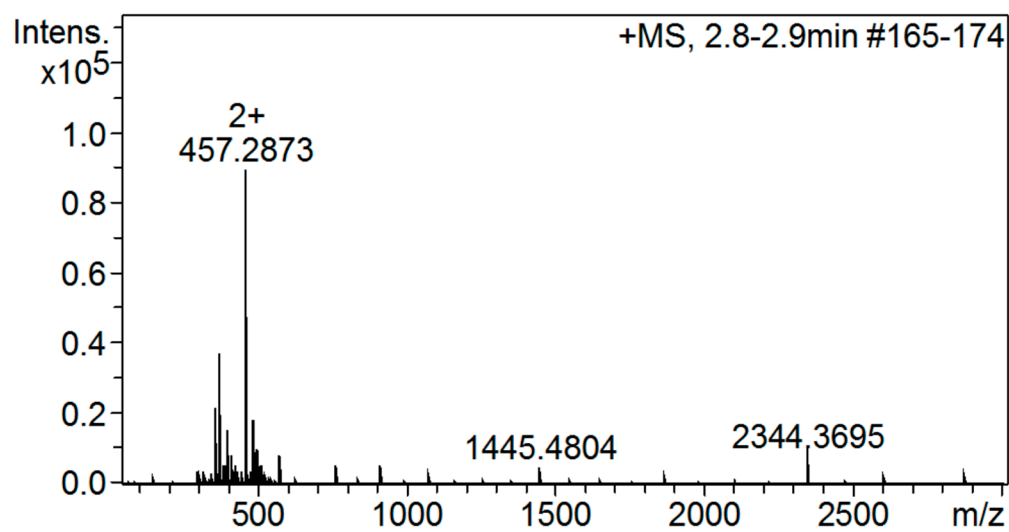


Figure S16. MS spectrum of peptide 16.

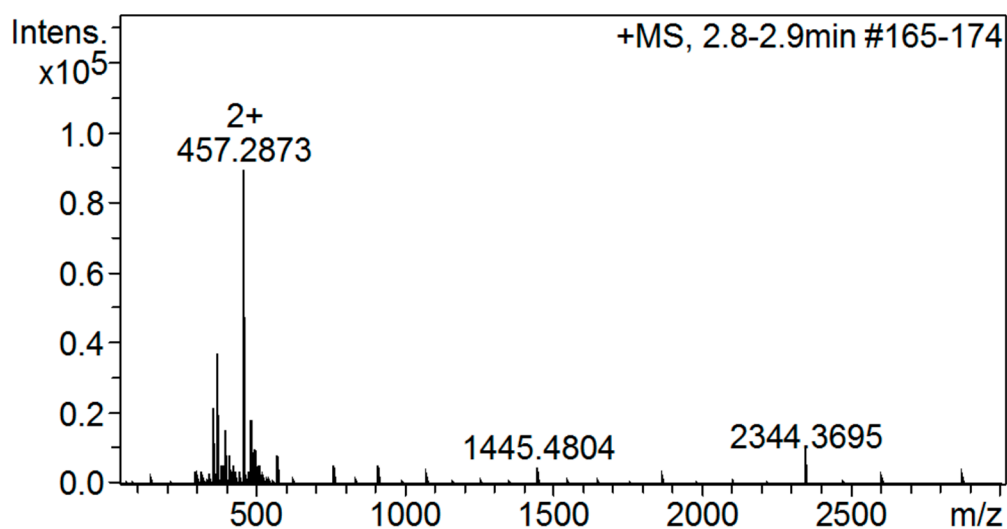


Figure S17. MS spectrum of peptide 17.

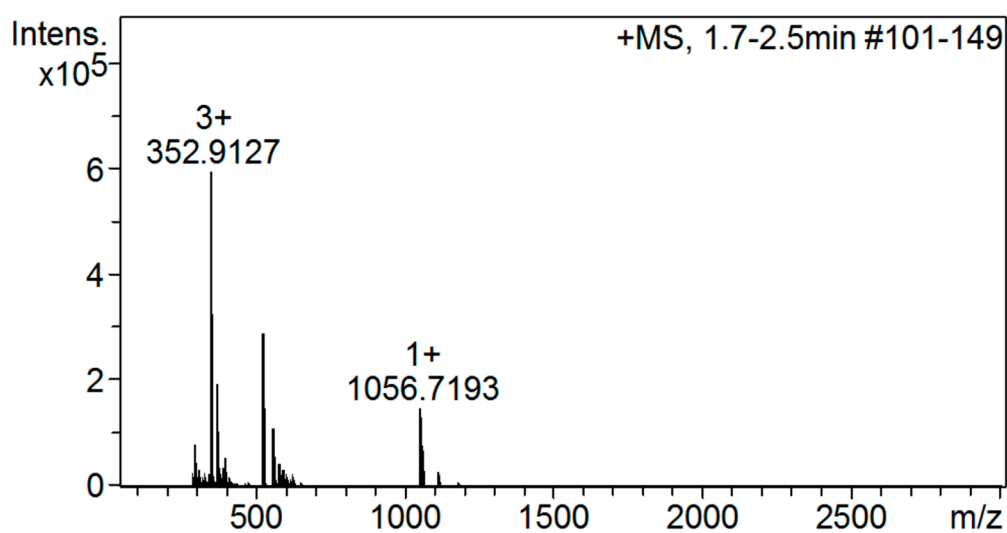


Figure S18. MS spectrum of peptide 18.

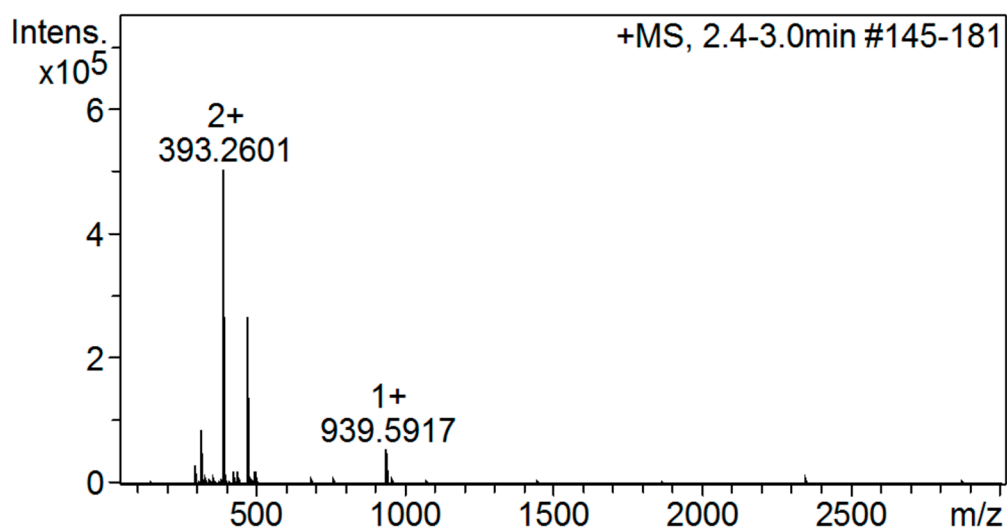


Figure S19. MS spectrum of peptide 19.

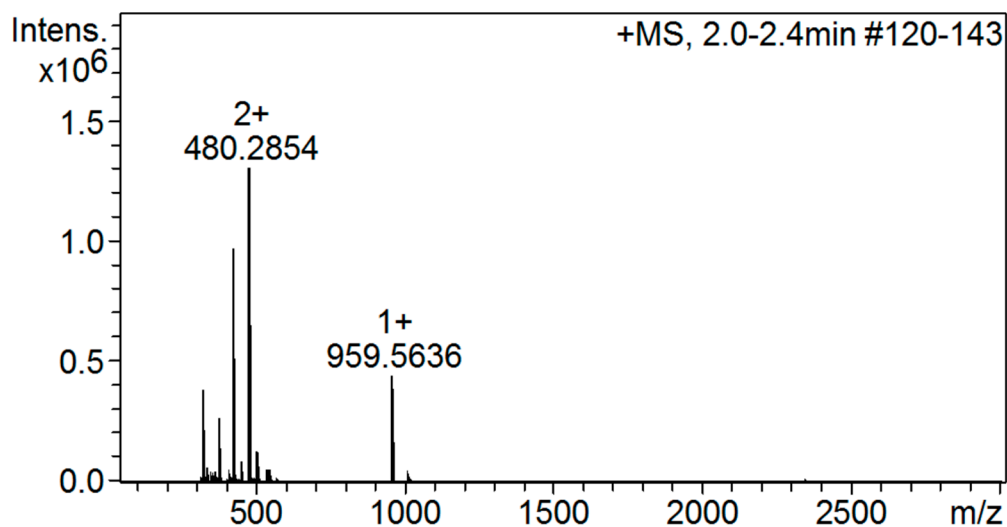


Figure S20. MS spectrum of peptide 20.

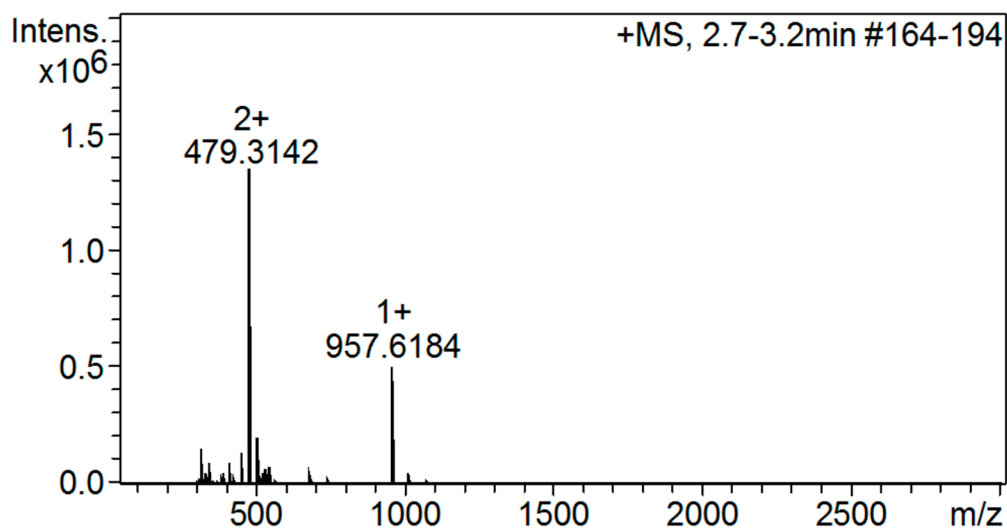


Figure S21. MS spectrum of peptide 21.

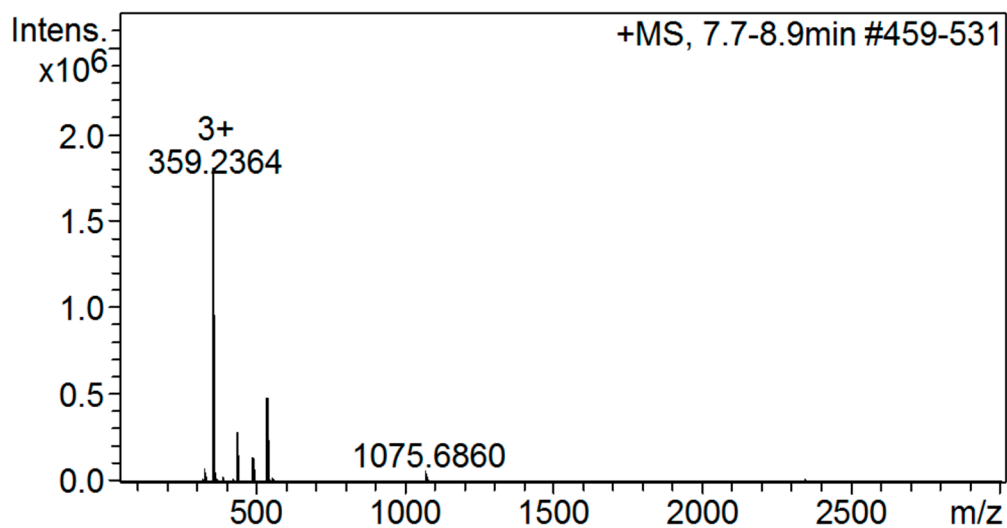


Figure S22. MS spectrum of peptide 22.

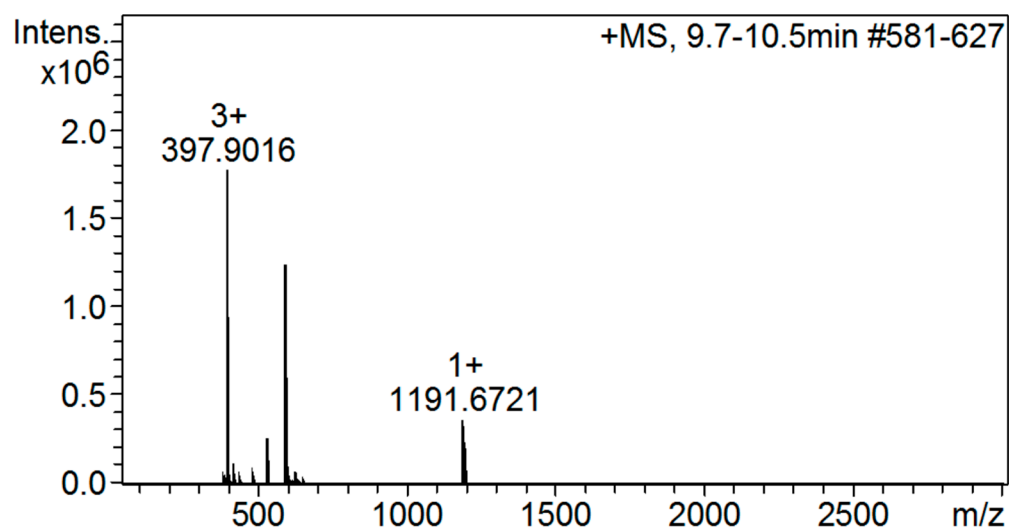


Figure S23. MS spectrum of peptide 23.

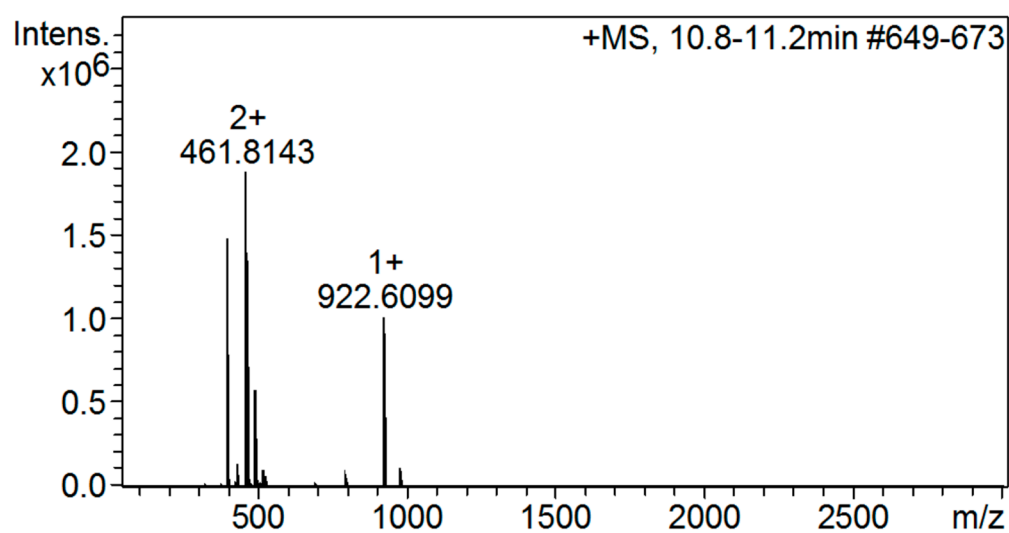


Figure S24. MS spectrum of peptide 24.

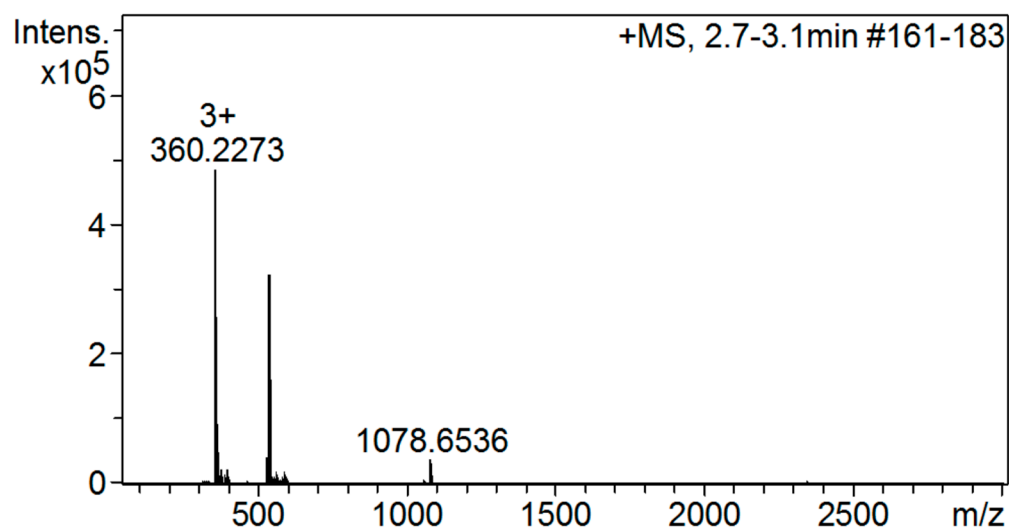


Figure S25. MS spectrum of peptide 25.

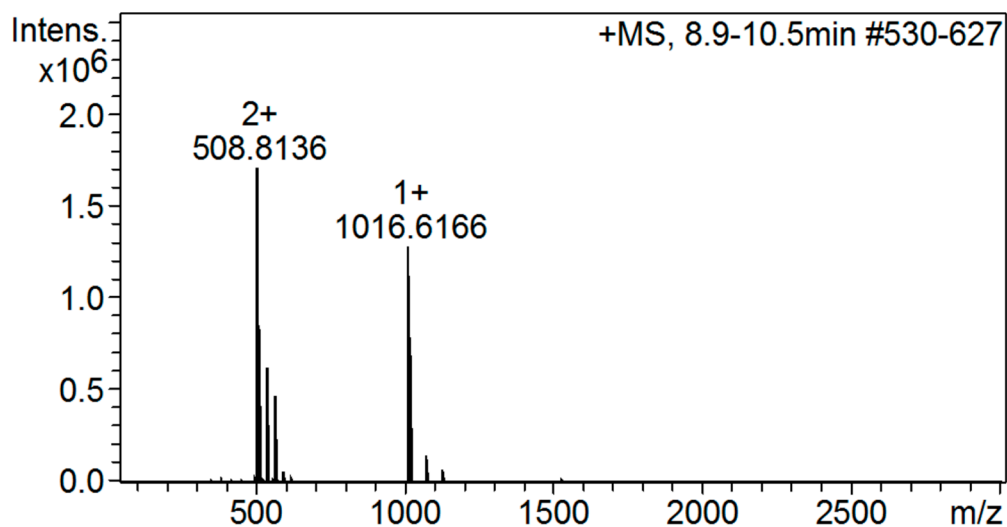


Figure S26. MS spectrum of peptide 26.

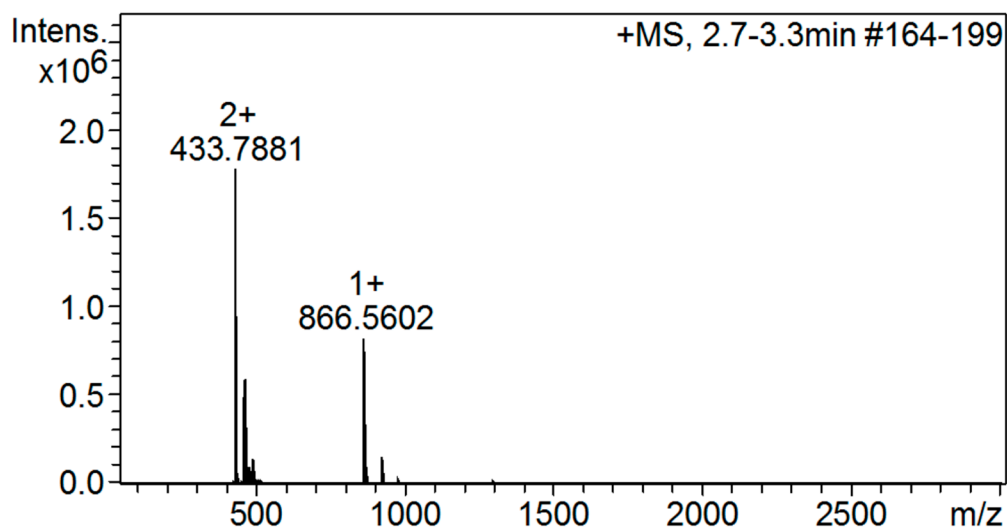


Figure S27. MS spectrum of peptide 27.

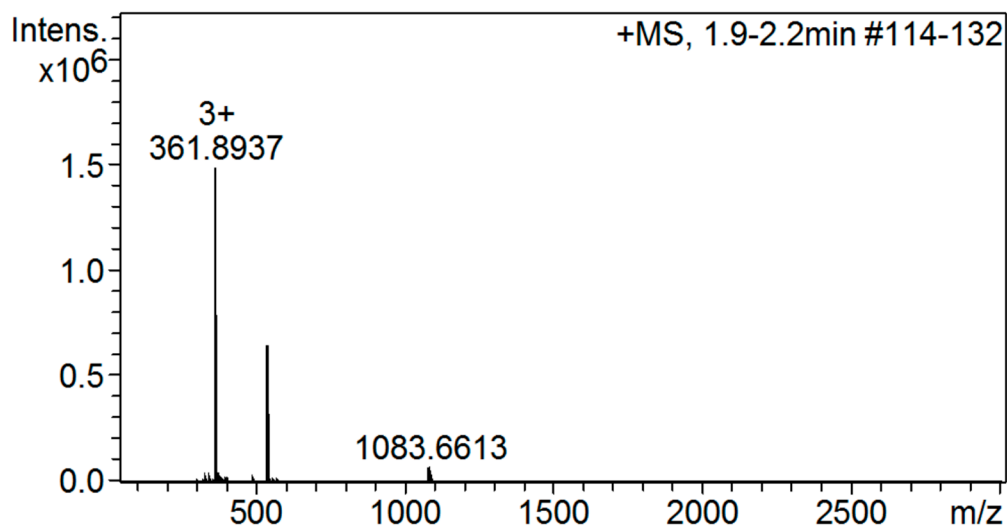


Figure S28. MS spectrum of peptide 28.

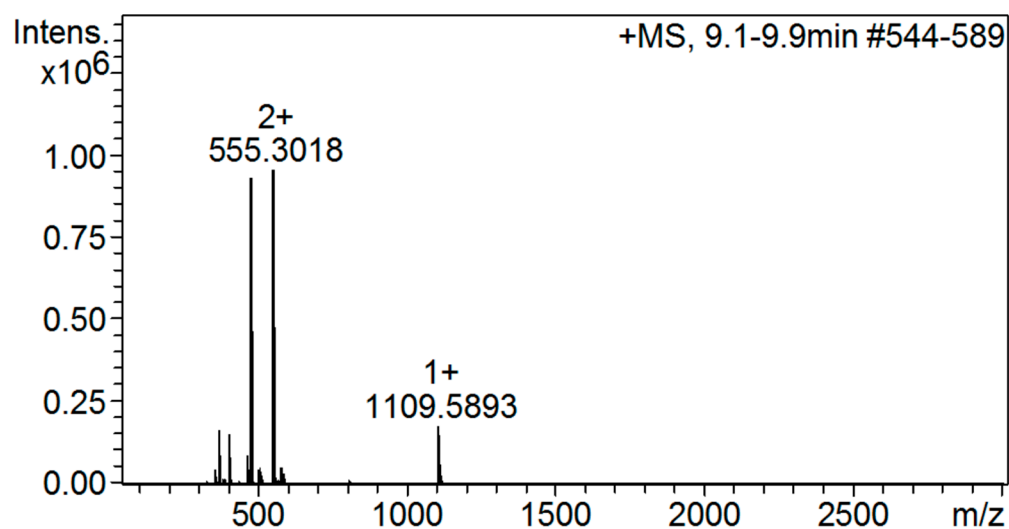


Figure S29. MS spectrum of peptide 29.

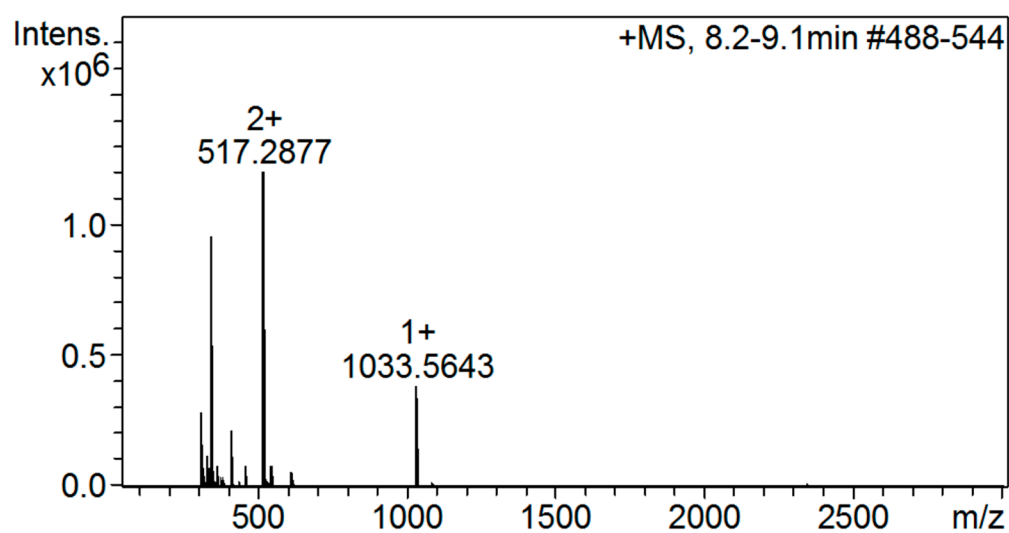


Figure S30. MS spectrum of peptide 30.

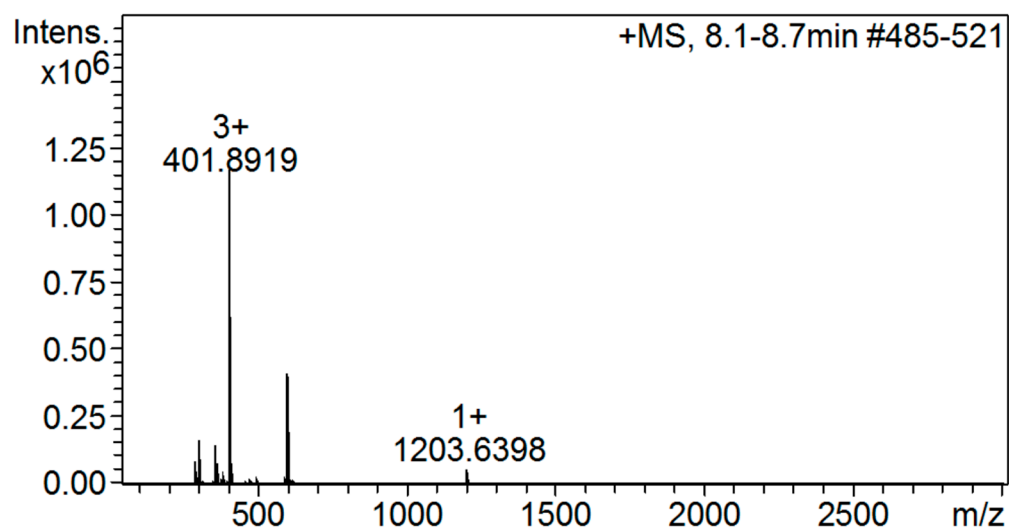


Figure S31. MS spectrum of peptide 31.

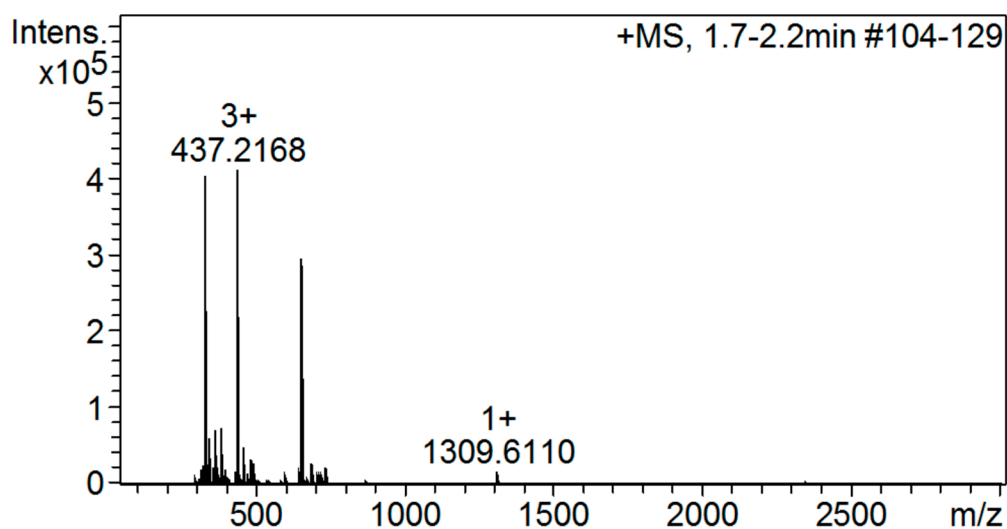


Figure S32. MS spectrum of peptide 32.

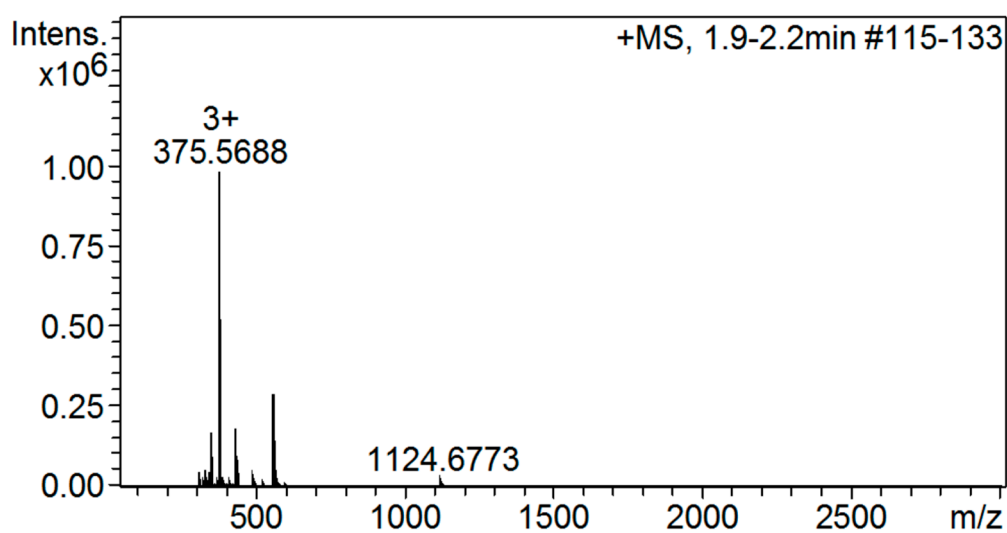


Figure S33. MS spectrum of peptide 33.

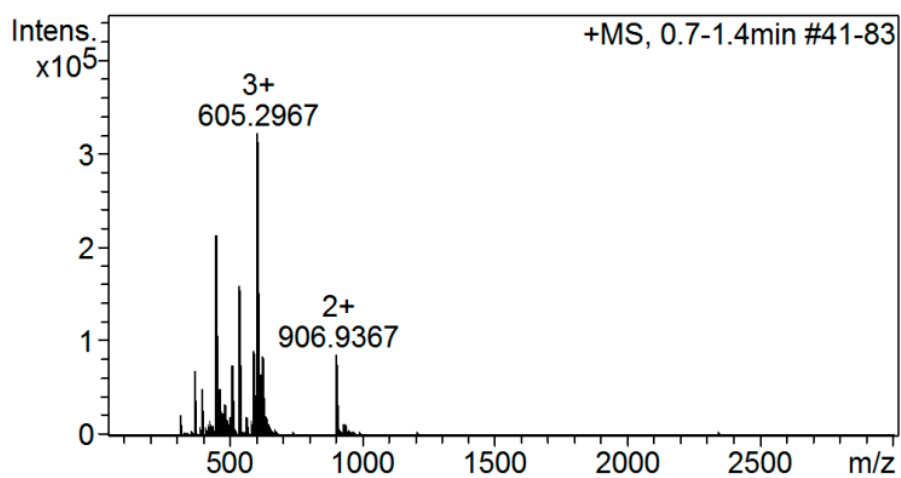


Figure S34. MS spectrum of peptide 2.1.



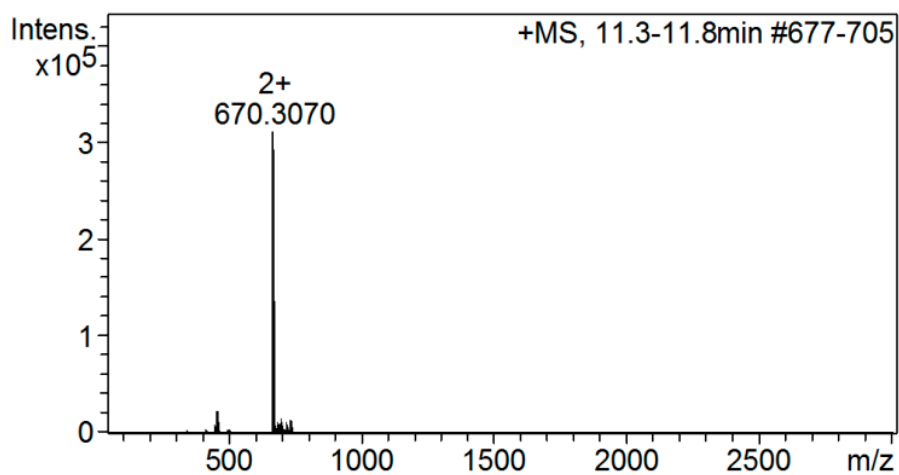


Figure S35. MS spectrum of peptide 2.2.

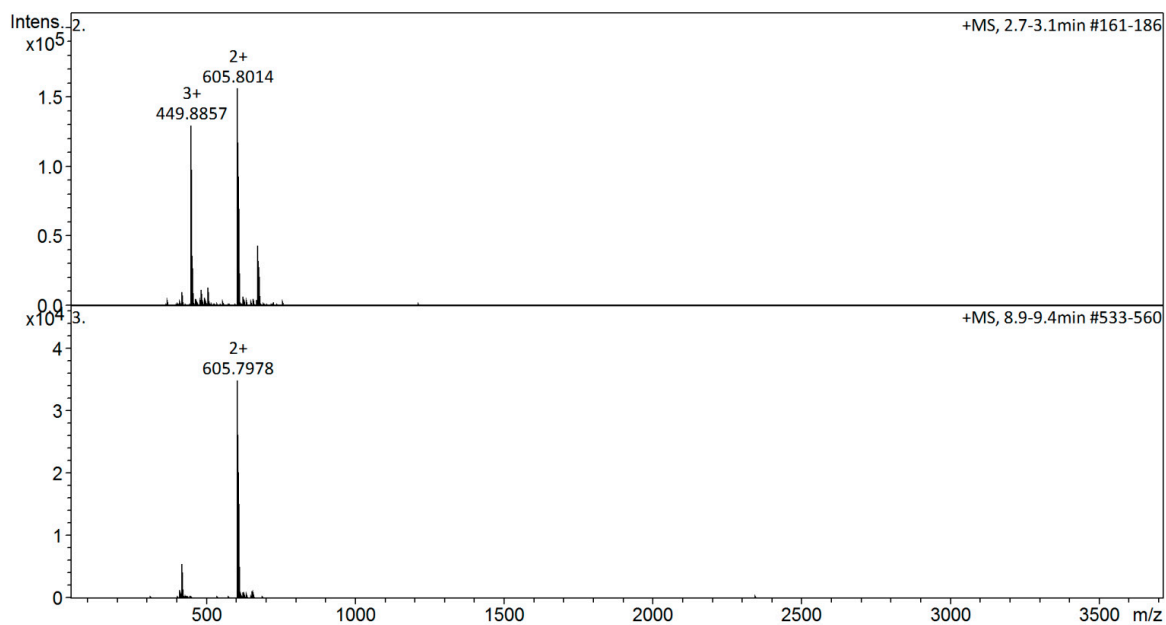


Figure S36. MS spectrum of peptide 2.3.

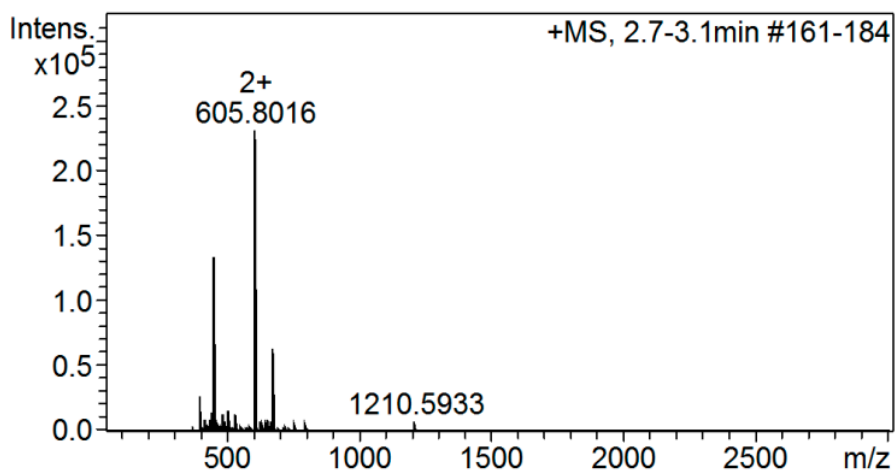
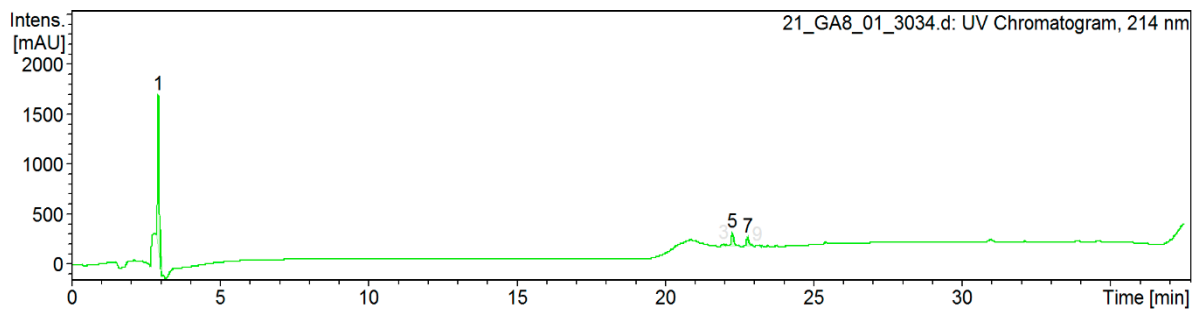
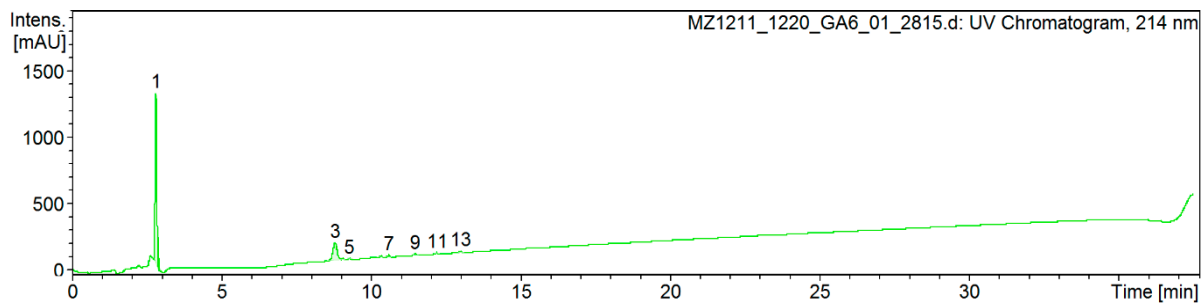


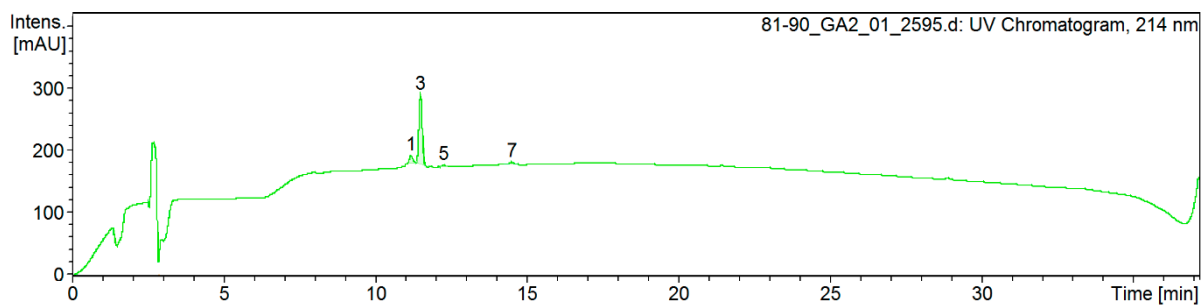
Figure S37. MS spectrum of peptide 2.4.



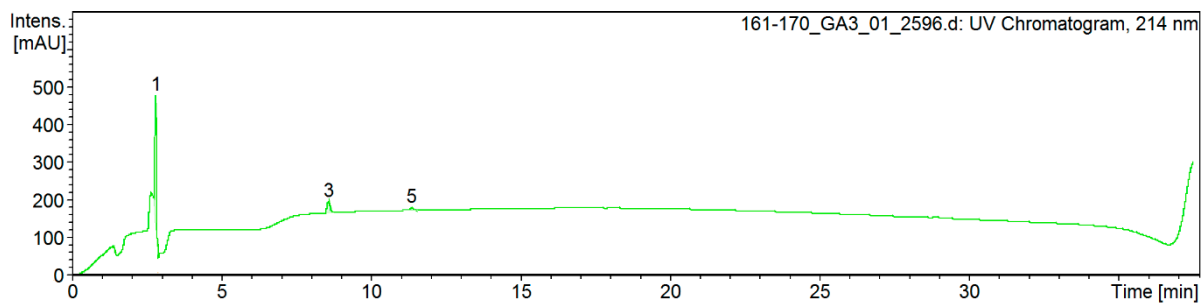
**Figure S38.** HPLC of peptide 1.



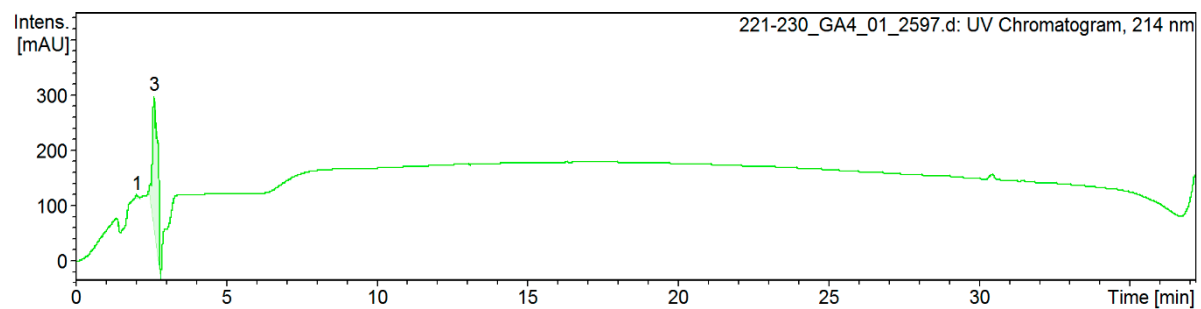
**Figure S39.** HPLC of peptide 2.



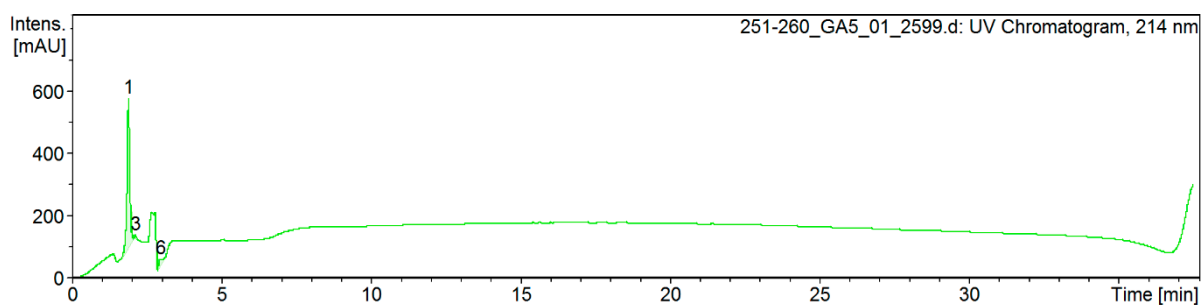
**Figure S40.** HPLC of peptide 3.



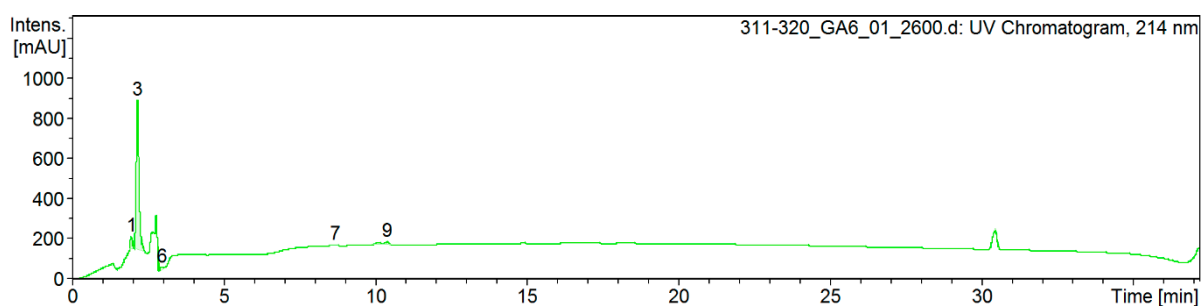
**Figure S41.** HPLC of peptide 4.



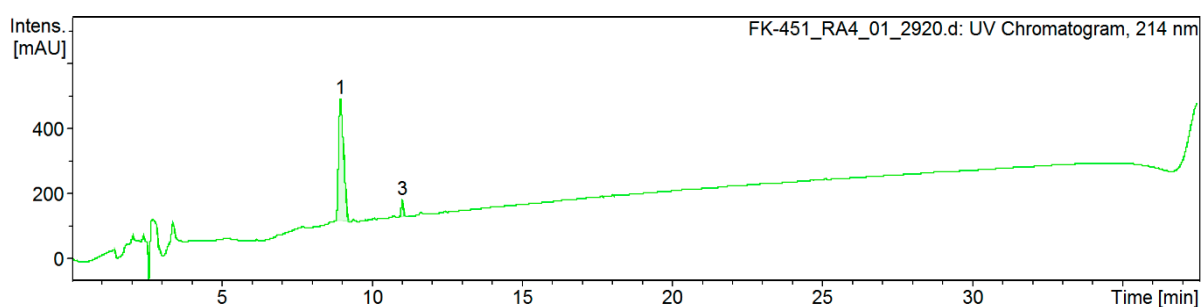
**Figure S42.** HPLC of peptide 5.



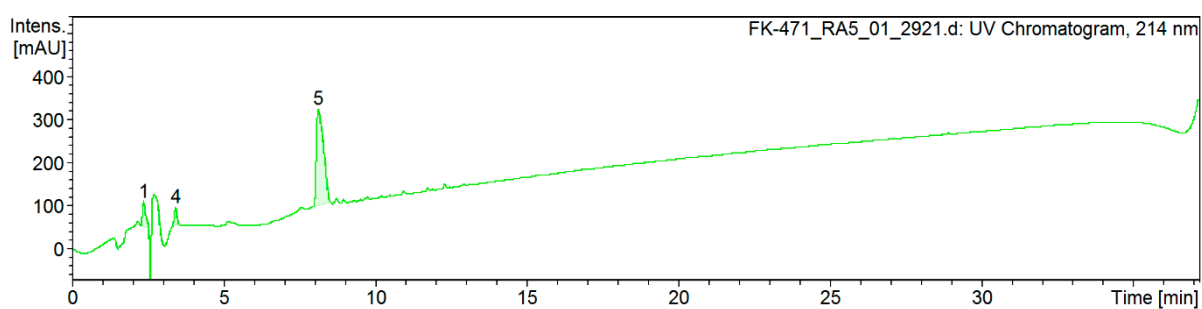
**Figure S43.** HPLC of peptide 6.



**Figure S44.** HPLC of peptide 7.



**Figure S45.** HPLC of peptide 8.



**Figure S46.** HPLC of peptide 9.

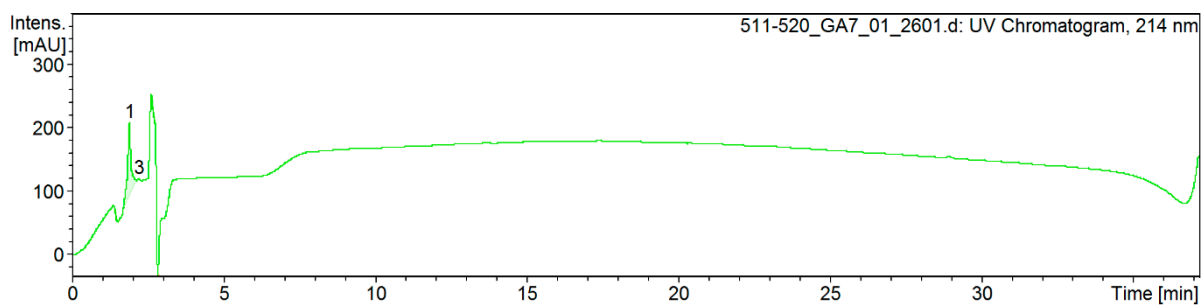


Figure S47. HPLC of peptide 10.

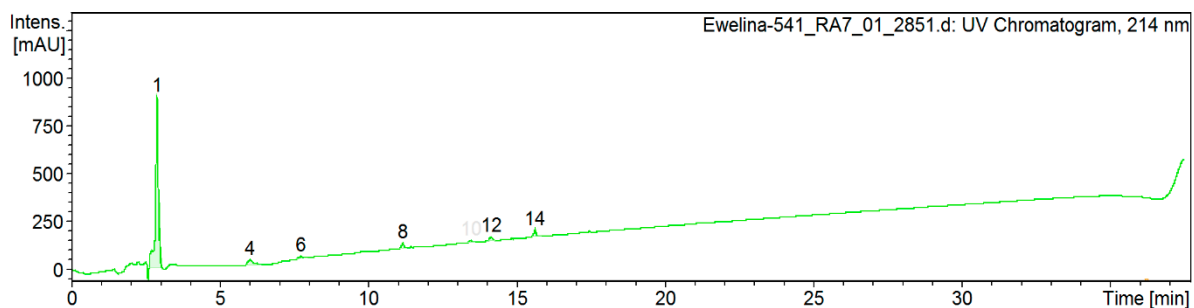


Figure S48. HPLC of peptide 11.

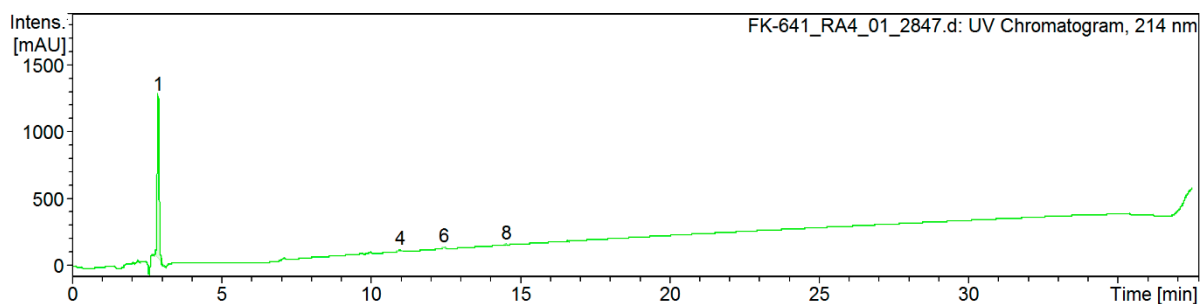


Figure S49. HPLC of peptide 12.

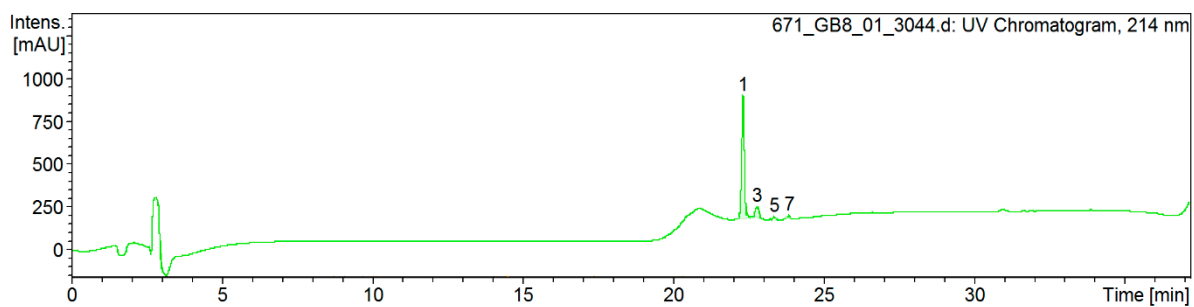
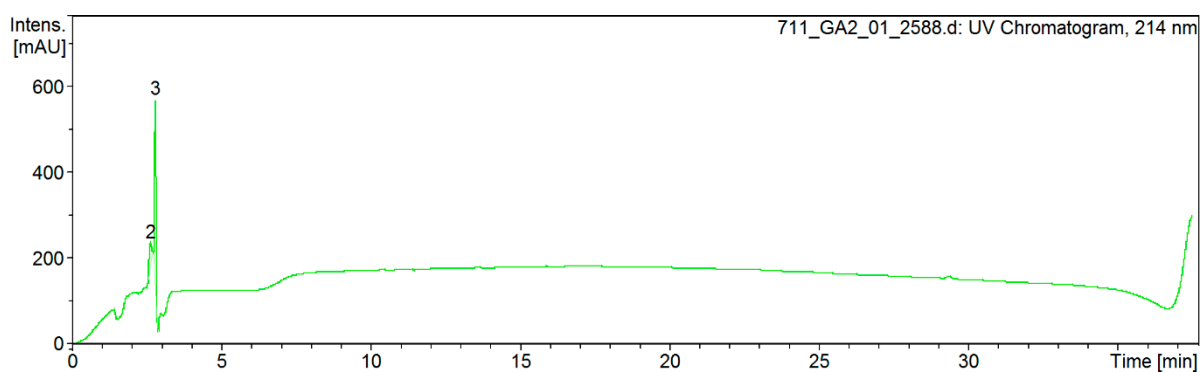
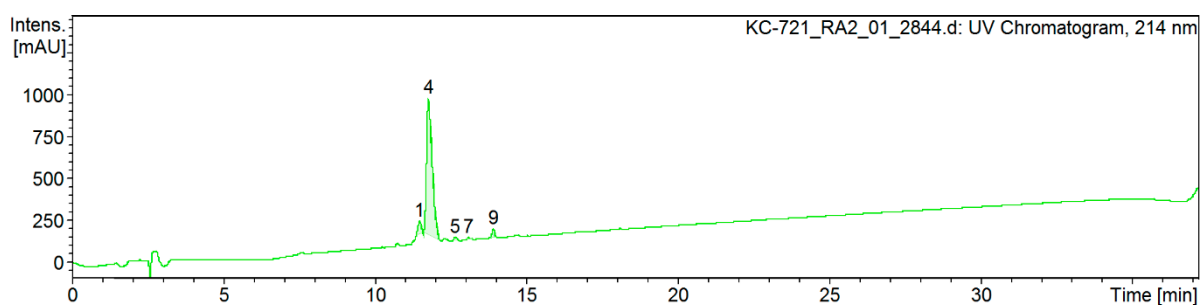


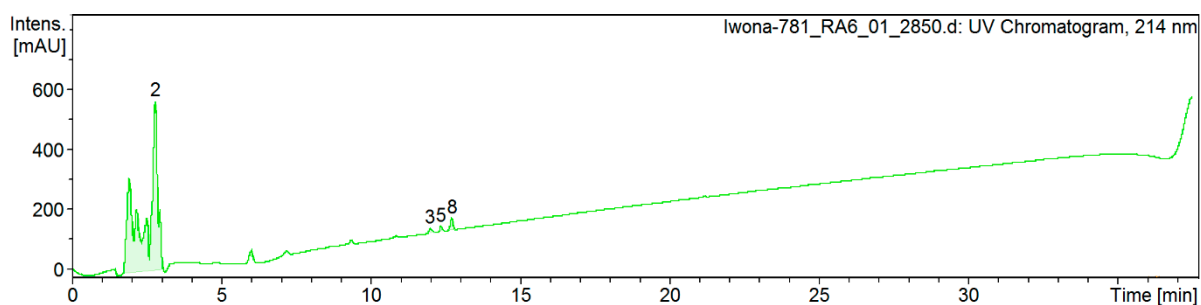
Figure S50. HPLC of peptide 13.



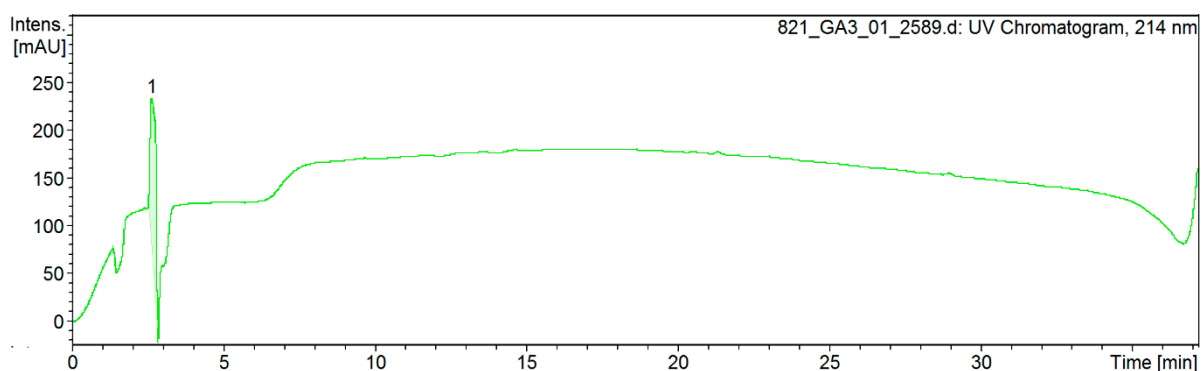
**Figure S51.** HPLC of peptide 14.



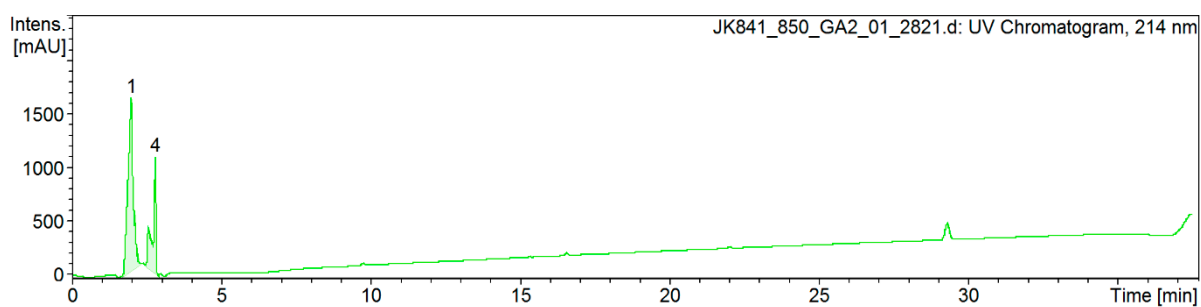
**Figure S52.** HPLC of peptide 15.



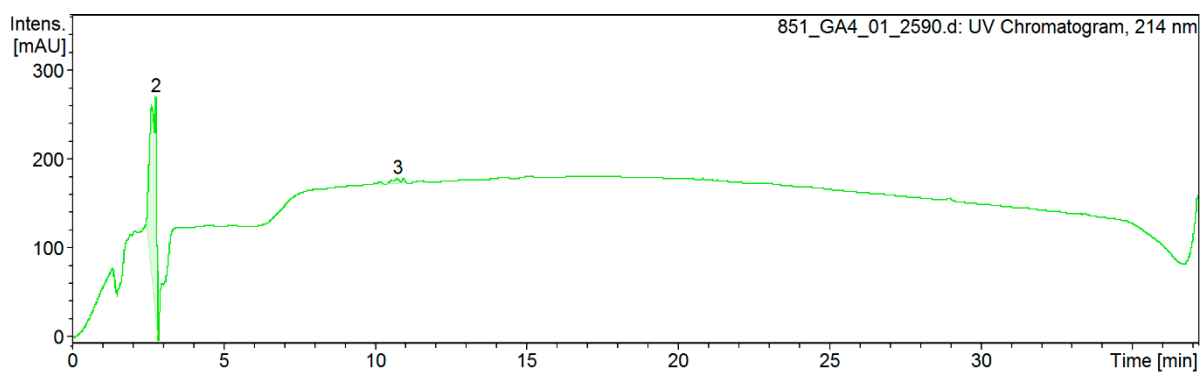
**Figure S53.** HPLC of peptide 16.



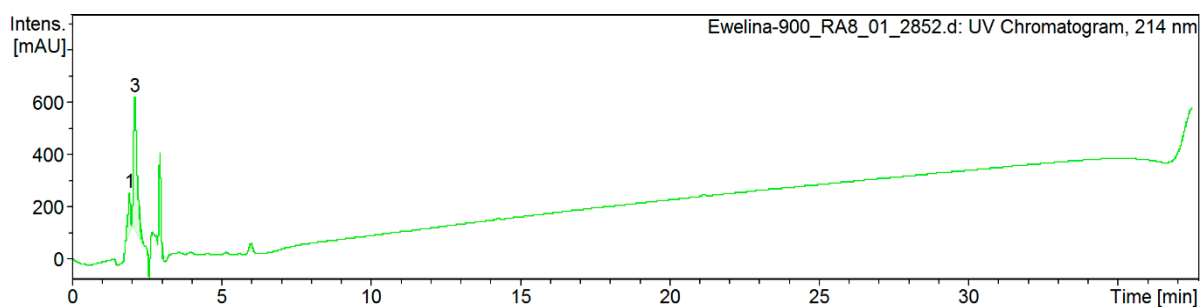
**Figure S54.** HPLC of peptide 17.



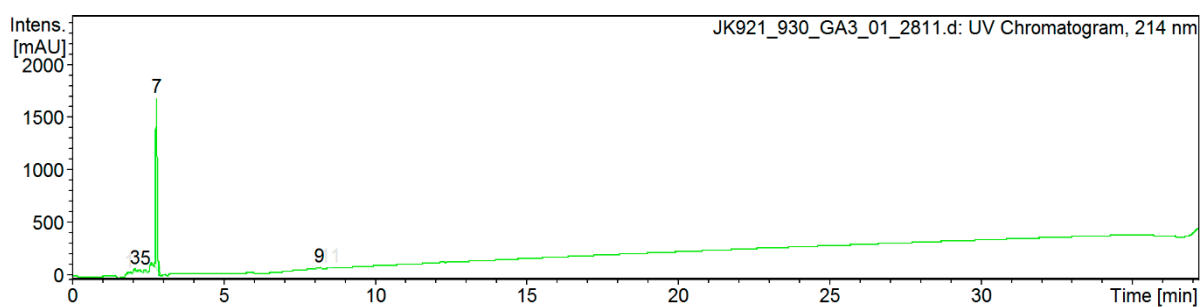
**Figure S55.** HPLC of peptide 18.



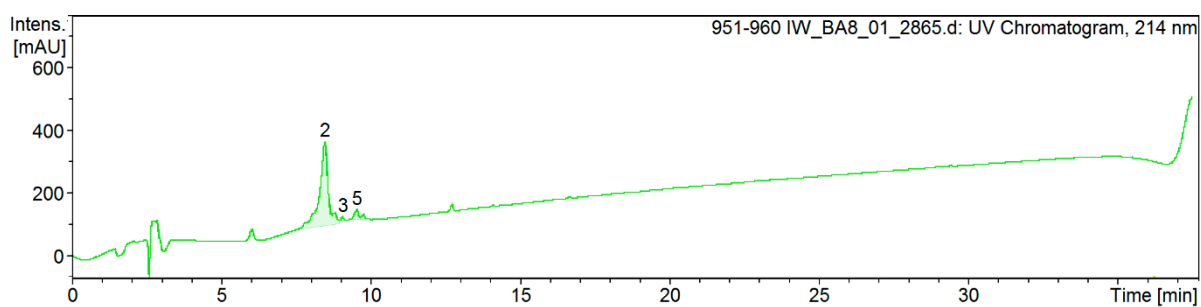
**Figure S56.** HPLC of peptide 19.



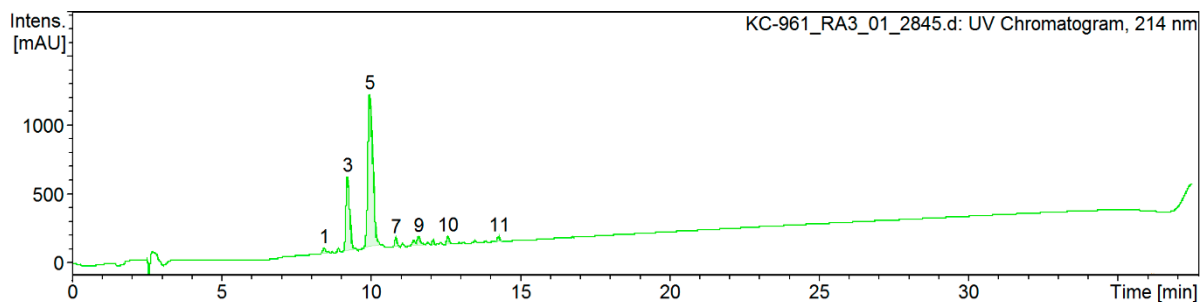
**Figure S57.** HPLC of peptide 20.



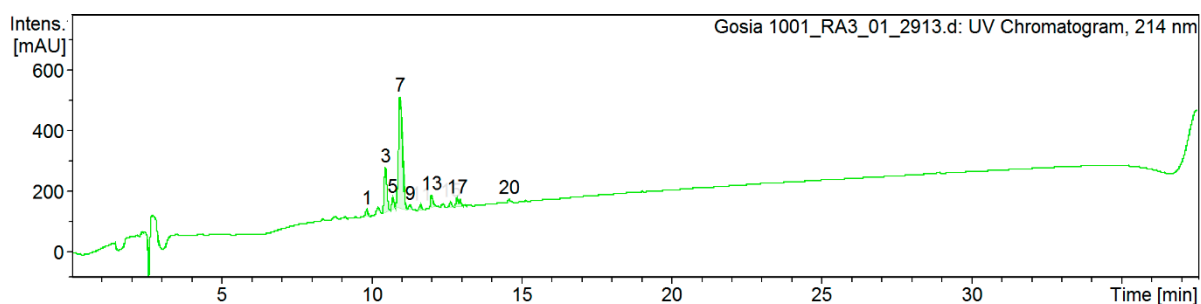
**Figure S58.** HPLC of peptide 21.



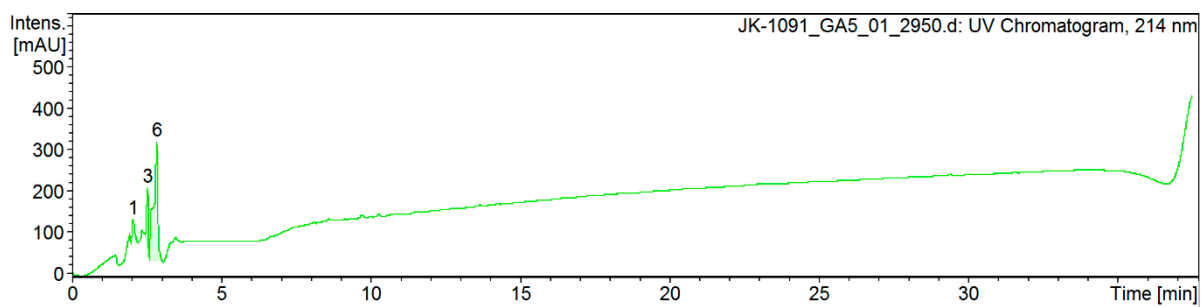
**Figure S59.** HPLC of peptide 22.



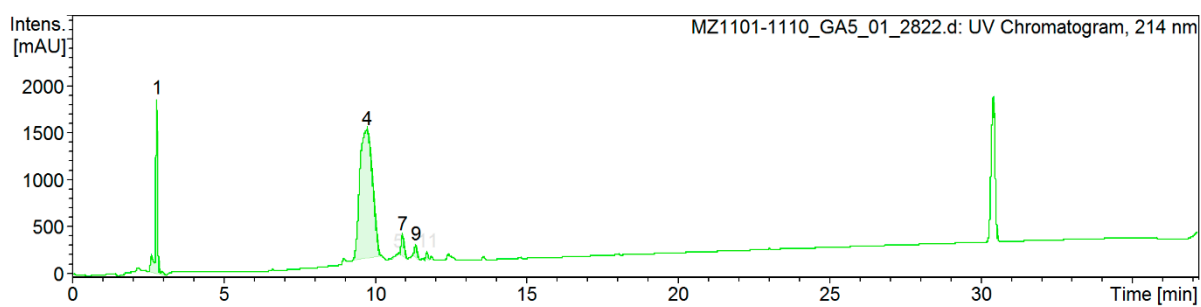
**Figure S60.** HPLC of peptide 23.



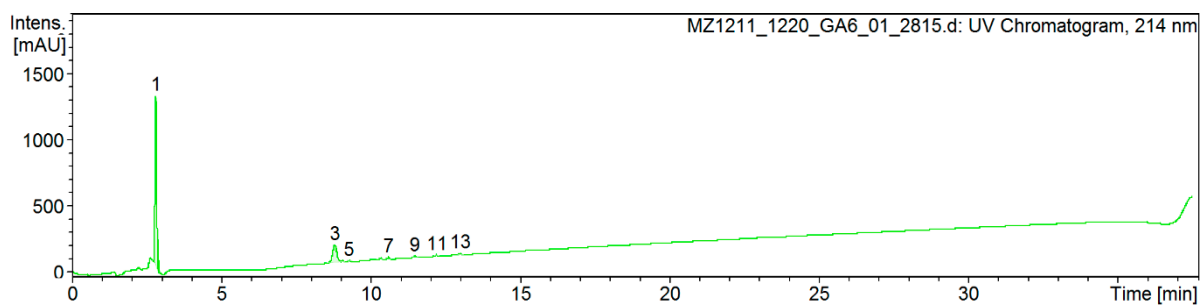
**Figure S61.** HPLC of peptide 24.



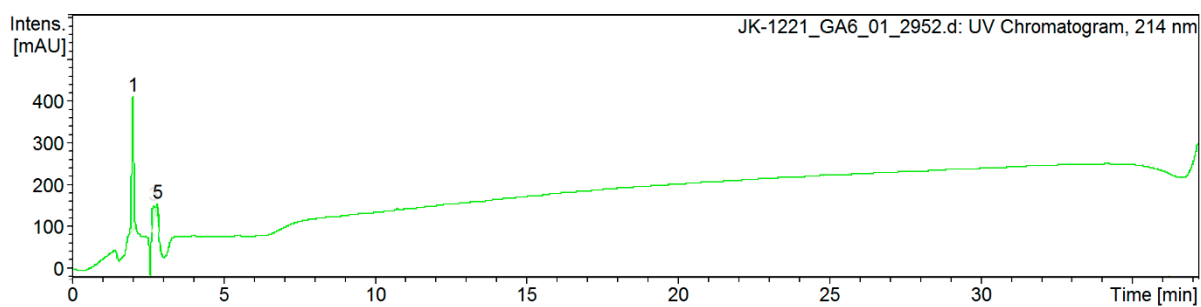
**Figure S62.** HPLC of peptide 25.



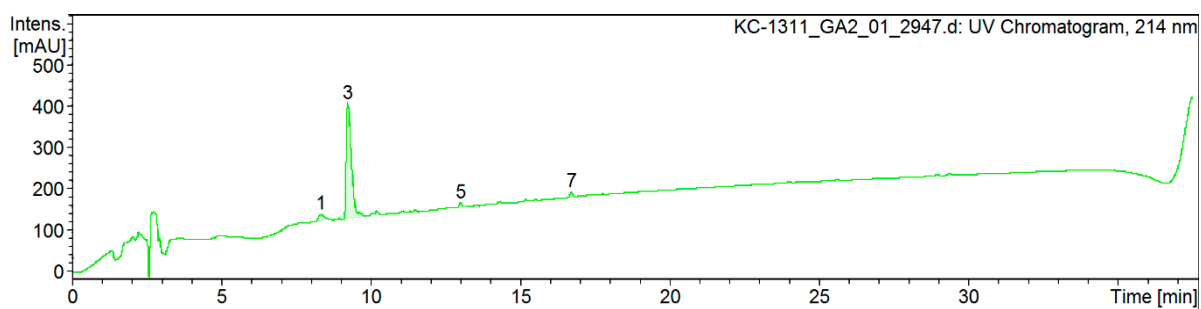
**Figure S63.** HPLC of peptide 26.



**Figure S64.** HPLC of peptide 27.

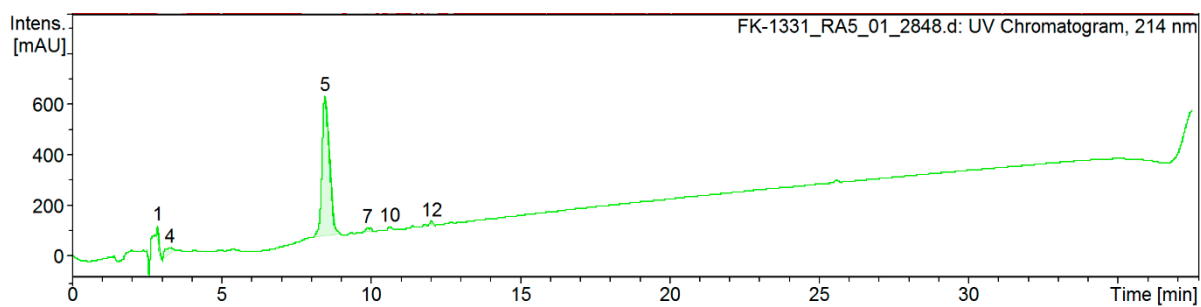


**Figure S65.** HPLC of peptide 28.

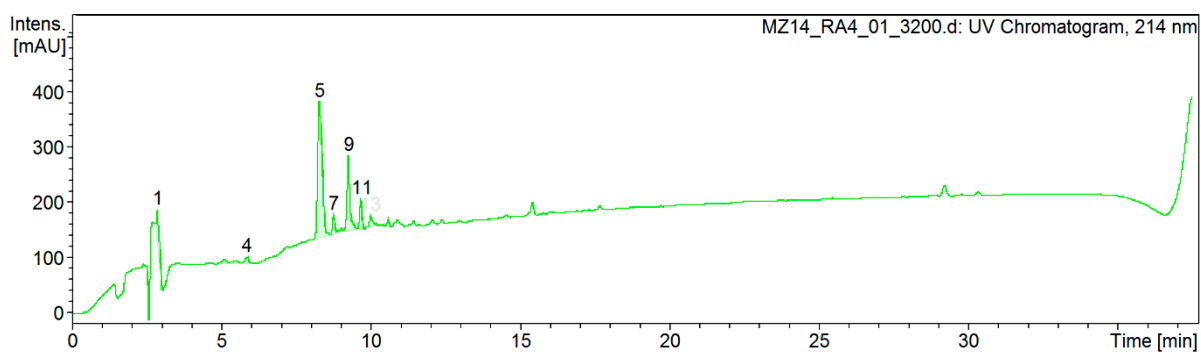


**Figure S66.** HPLC of peptide 29.

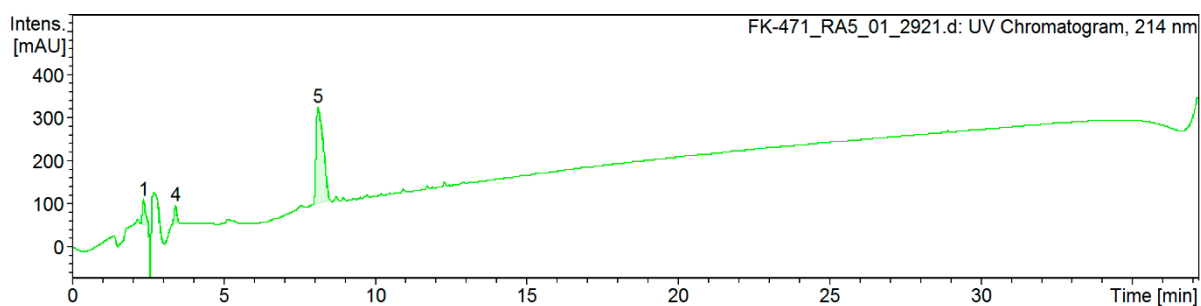




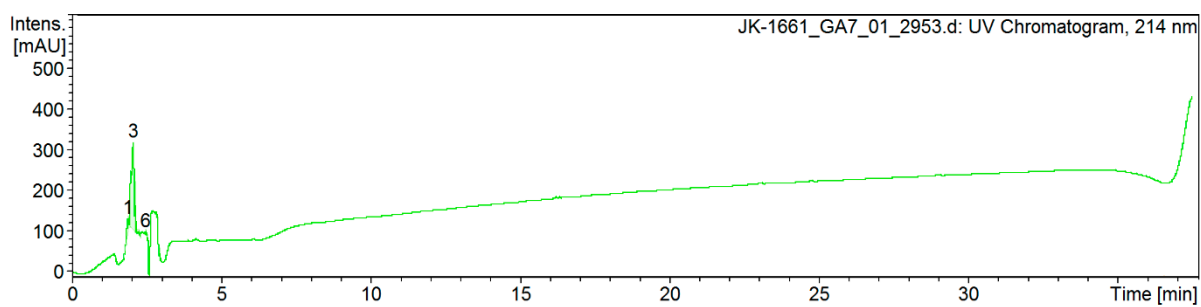
**Figure S67.** HPLC of peptide 30.



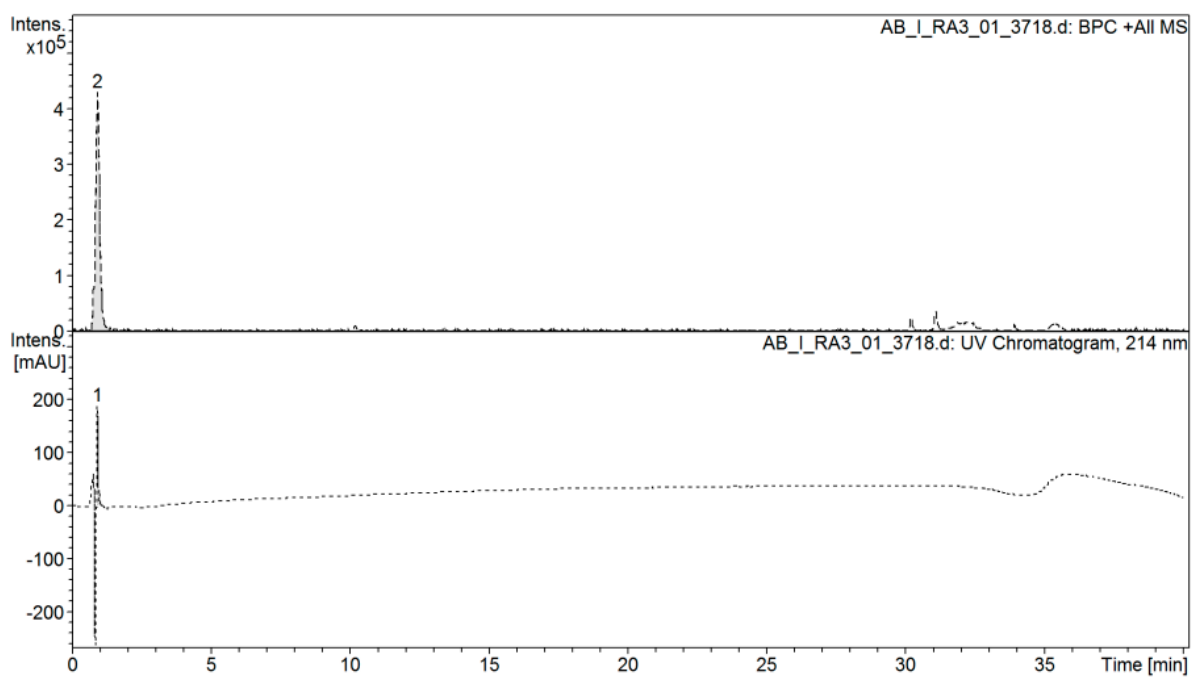
**Figure S68.** HPLC of peptide 31.



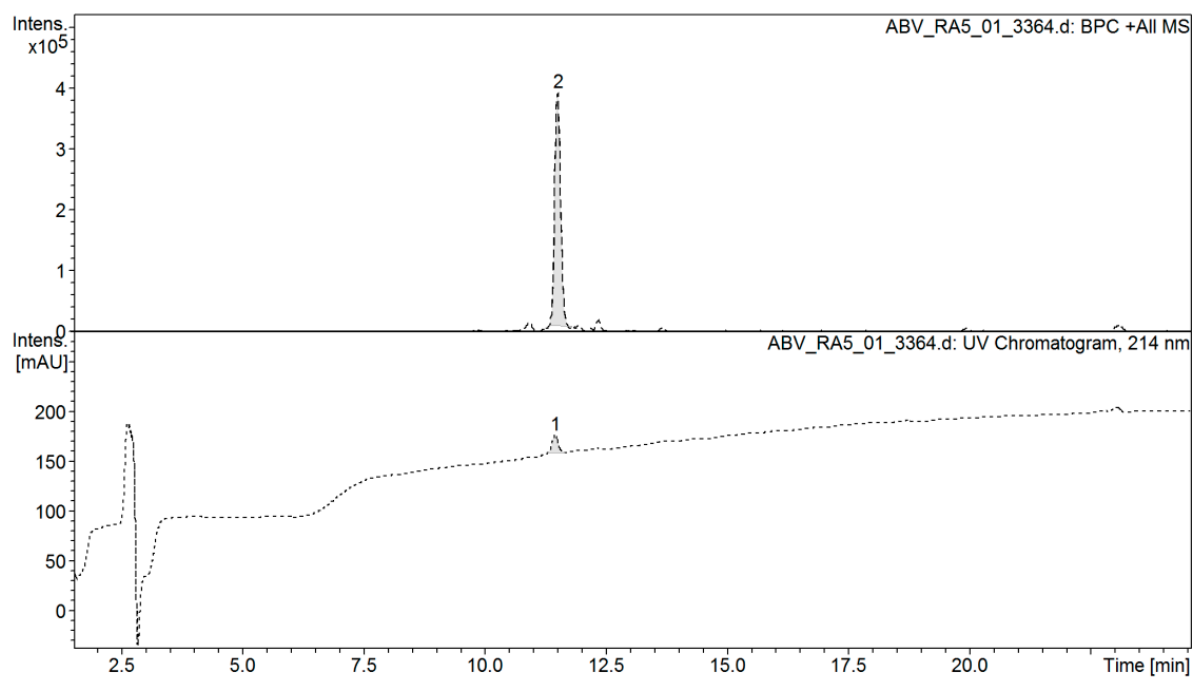
**Figure S69.** HPLC of peptide 32.



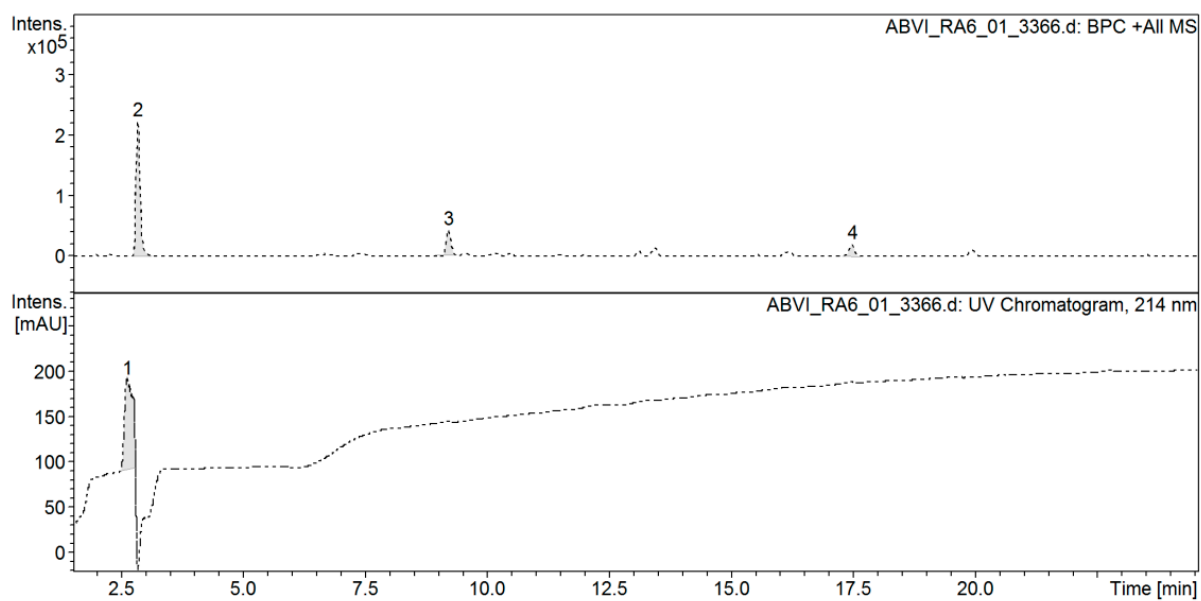
**Figure S70.** HPLC of peptide 33.



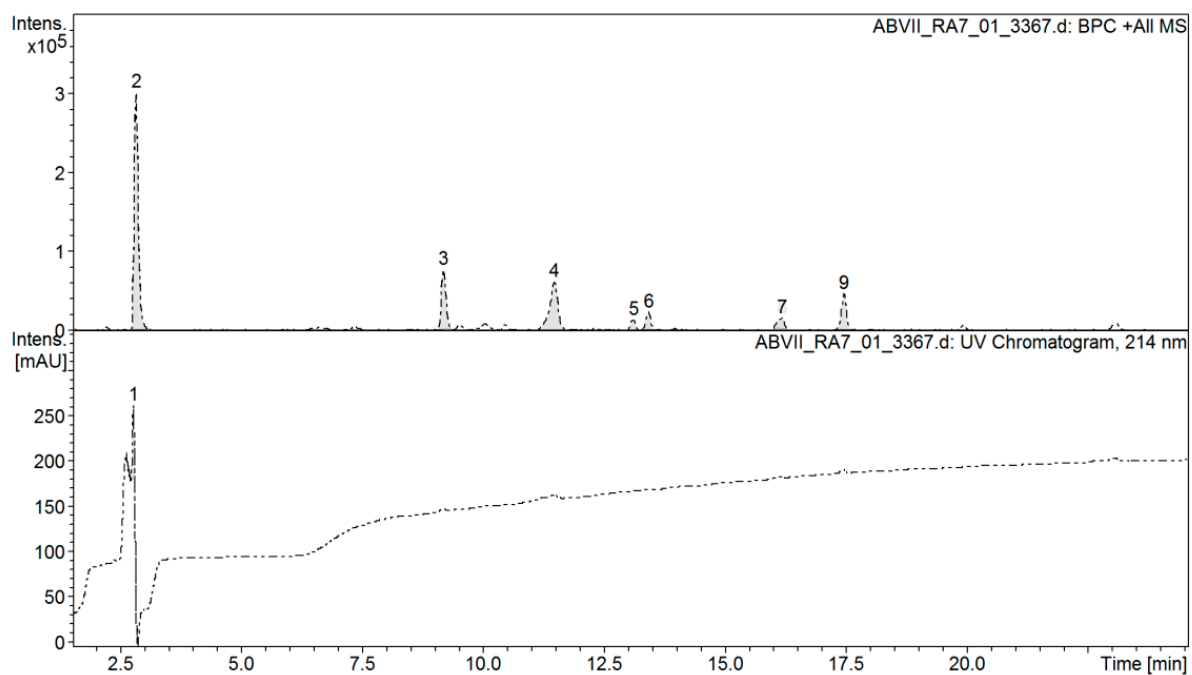
**Figure S71.** HPLC of peptide 2.1.



**Figure S72.** HPLC of peptide 2.2.



**Figure S73.** HPLC of peptide 2.3.



**Figure S74.** HPLC of peptide 2.4.

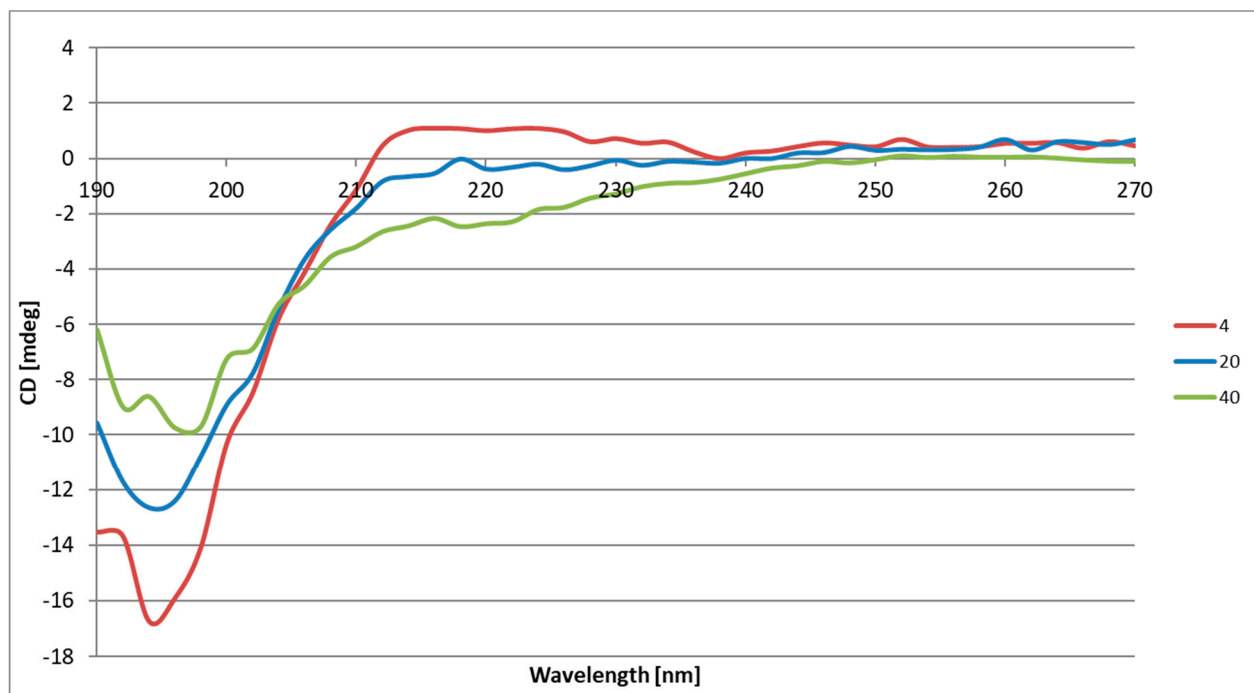


Figure S75. CD spectra of peptide 1.

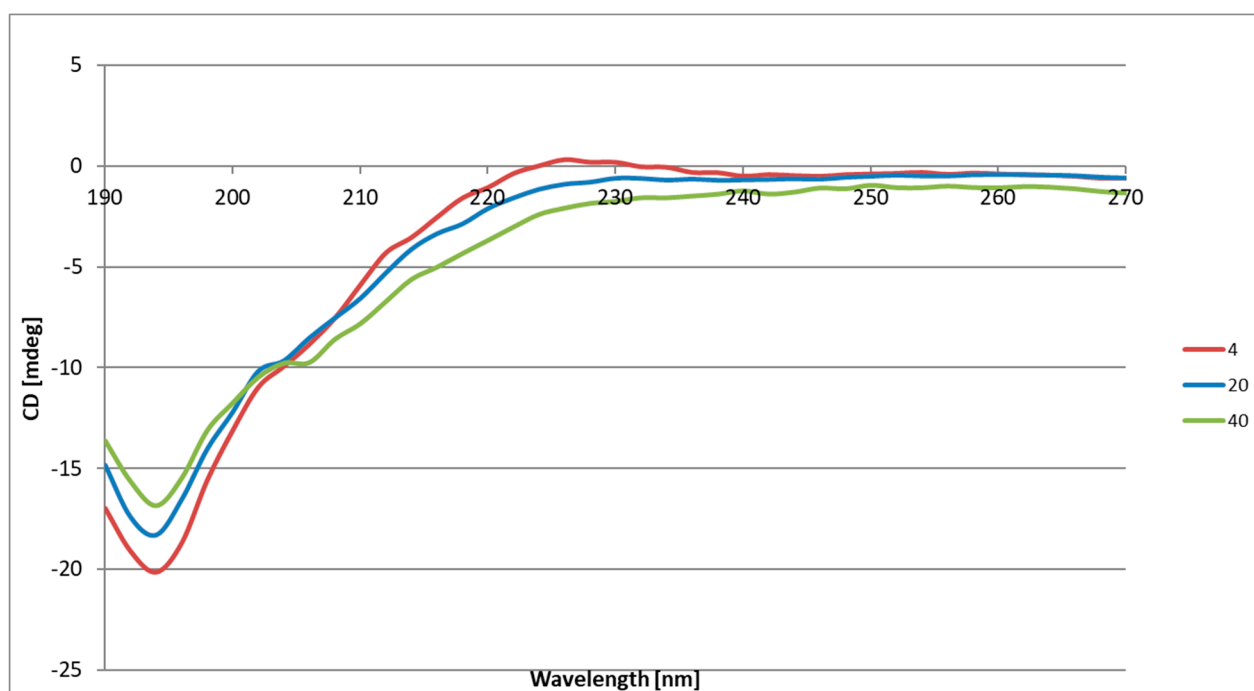


Figure S76. CD spectra of peptide 3.

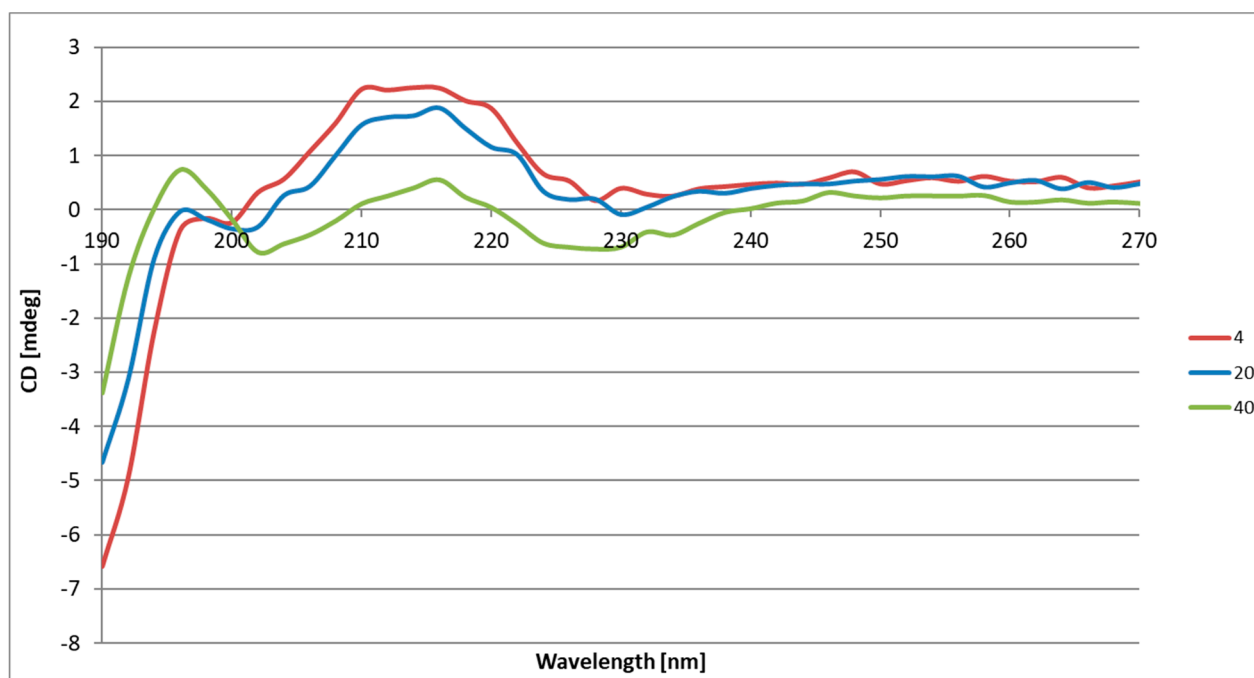


Figure S77. CD spectra of peptide 9.

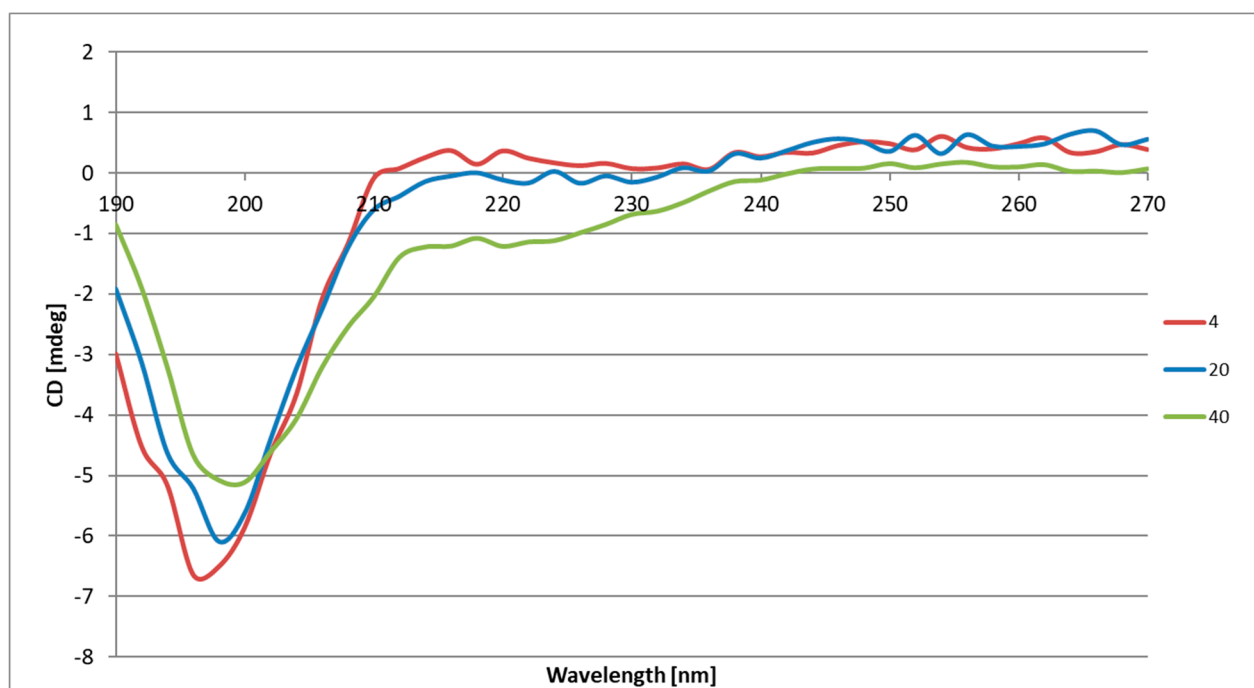


Figure S78. CD spectra of peptide 10.

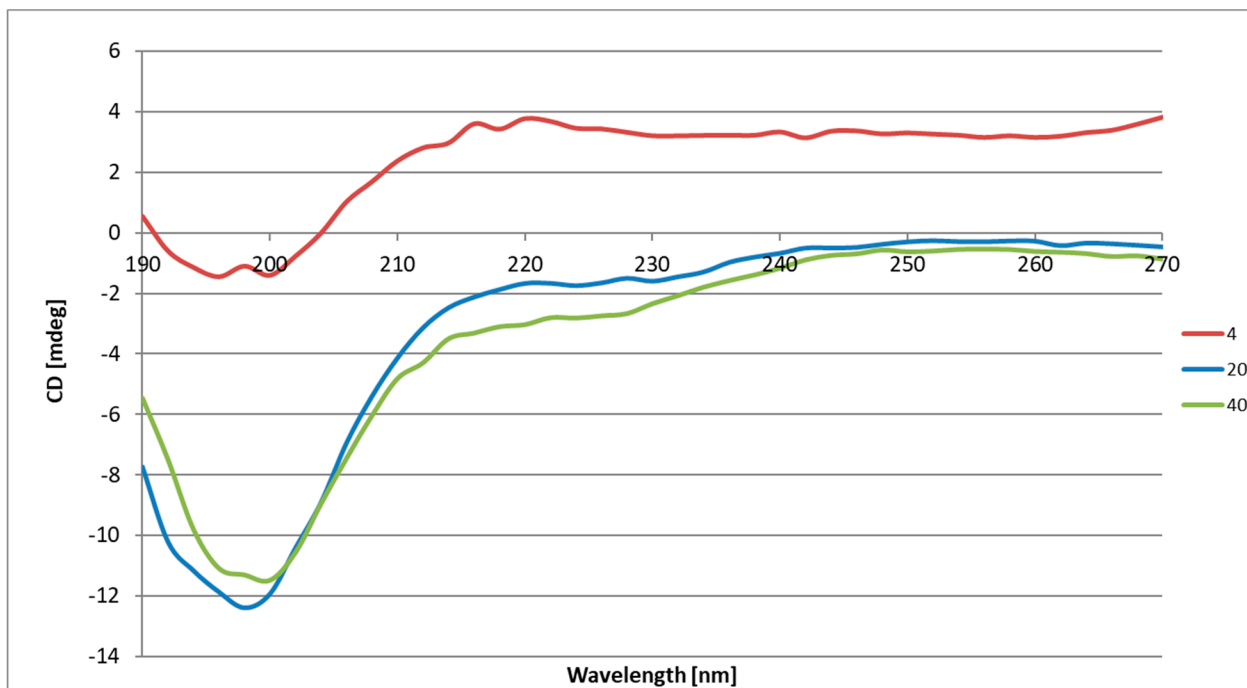


Figure S79. CD spectra of peptide 11.

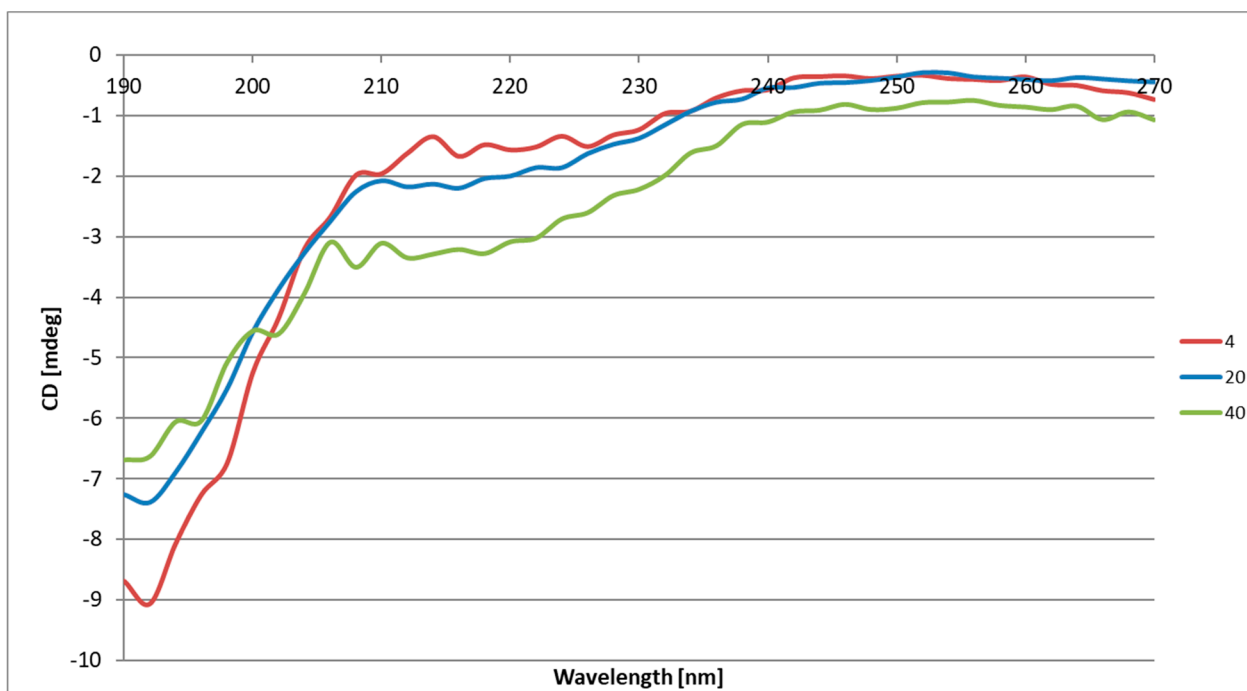
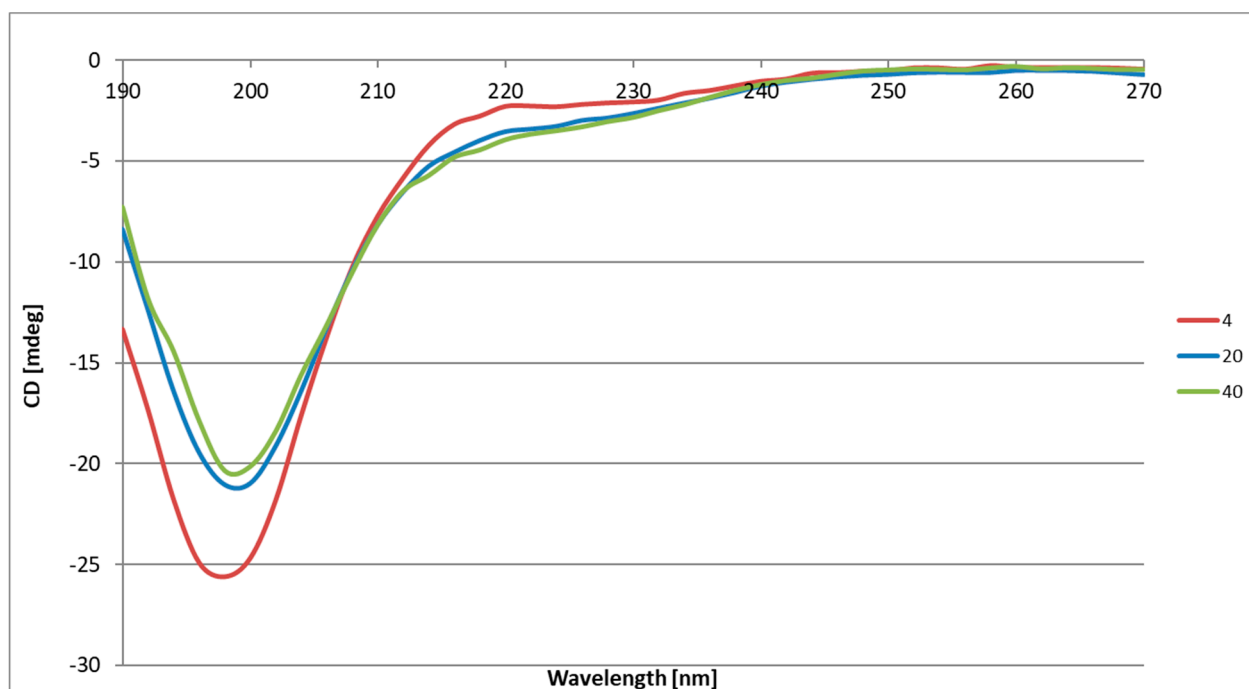
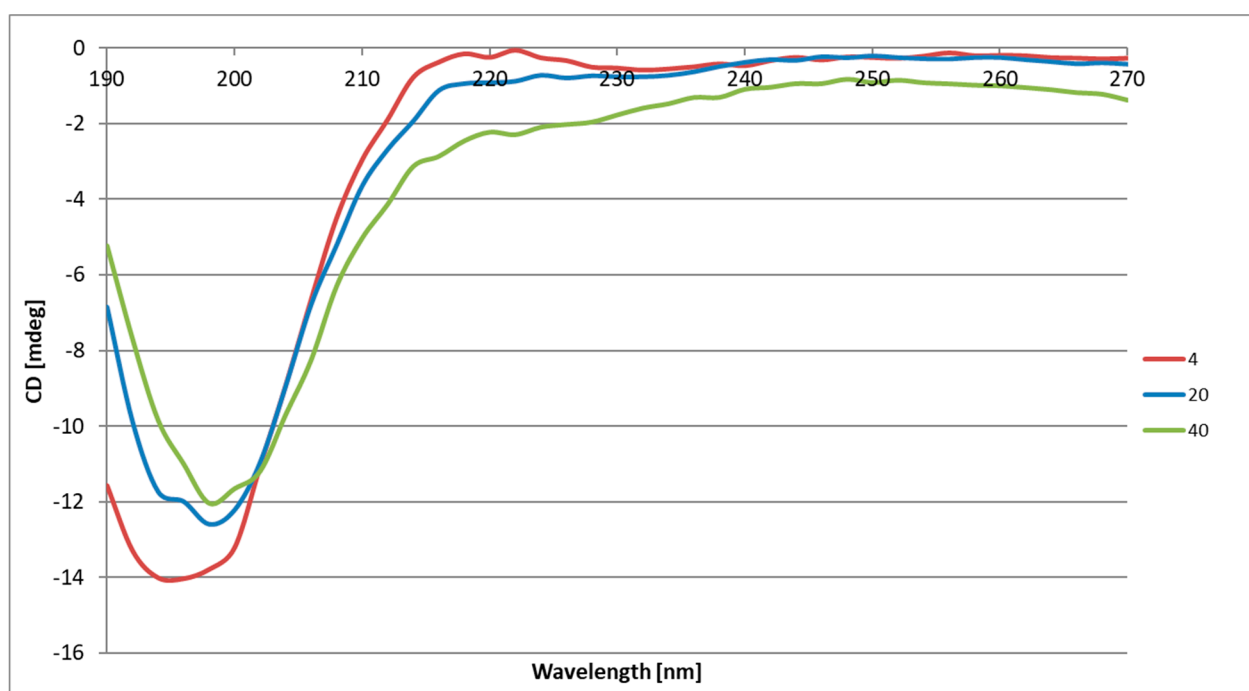


Figure S80. CD spectra of peptide 16.



**Figure S81.** CD spectra of peptide 19.



**Figure S82.** CD spectra of peptide 20.

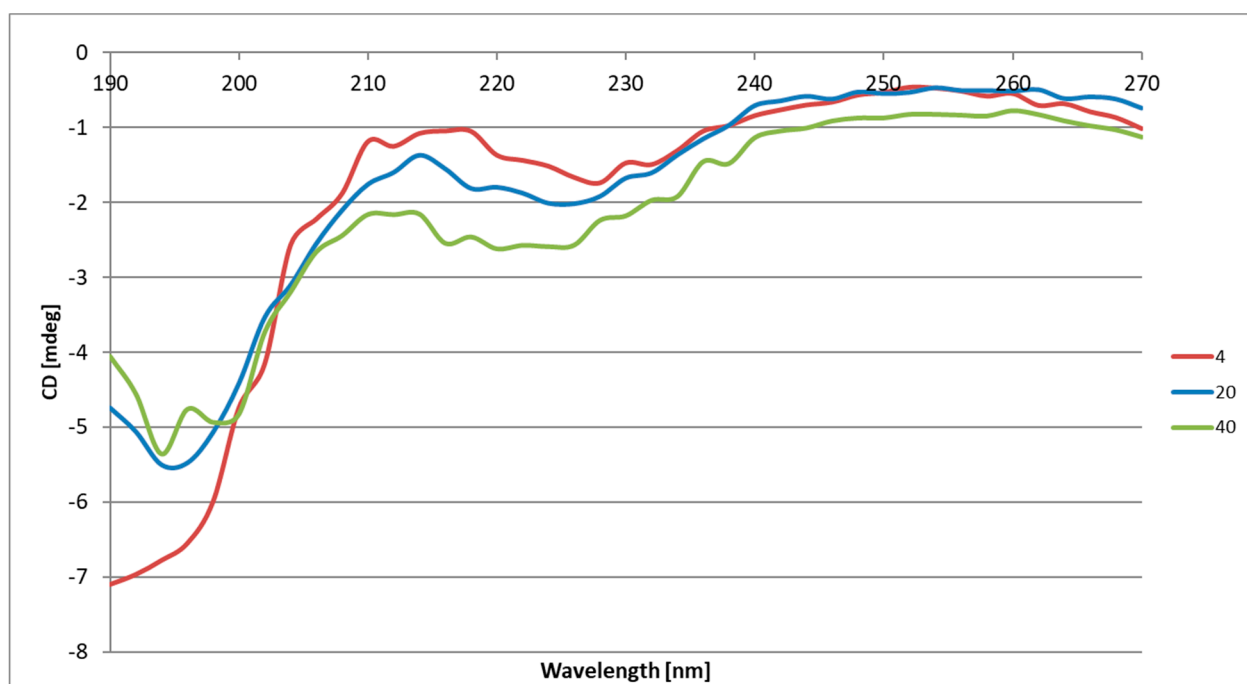


Figure S83. CD spectra of peptide 21.

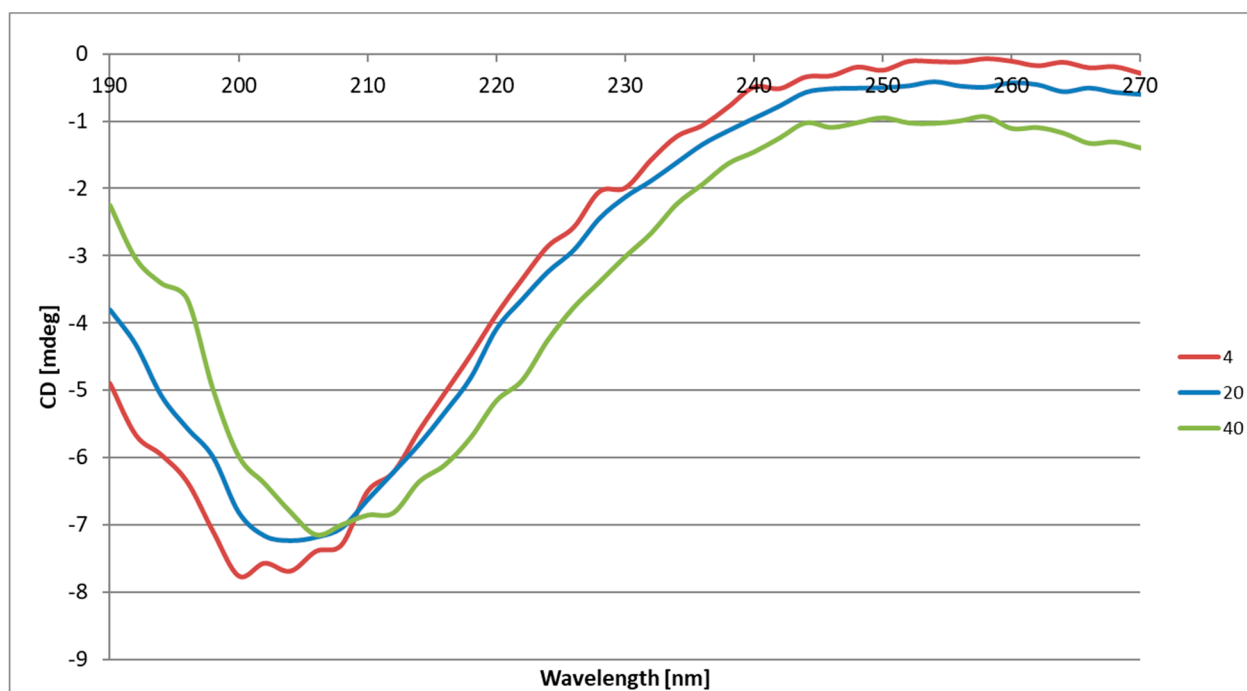


Figure S84. CD spectra of peptide 22.



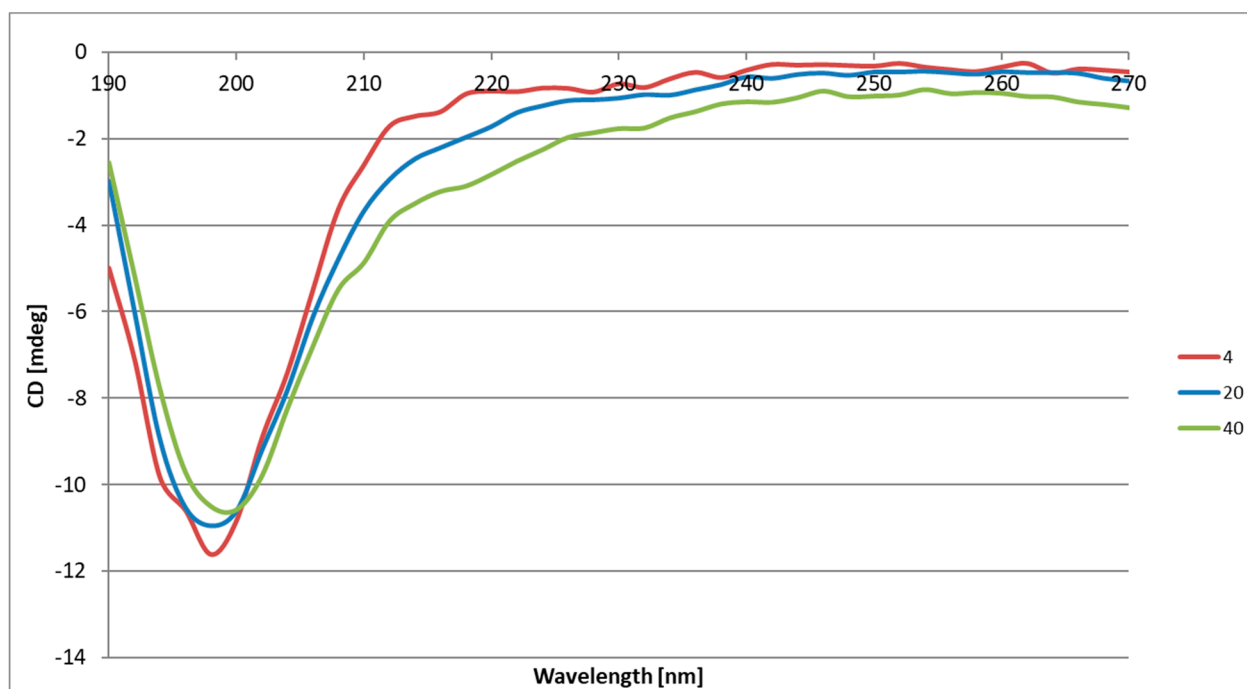


Figure S85. CD spectra of peptide 23.

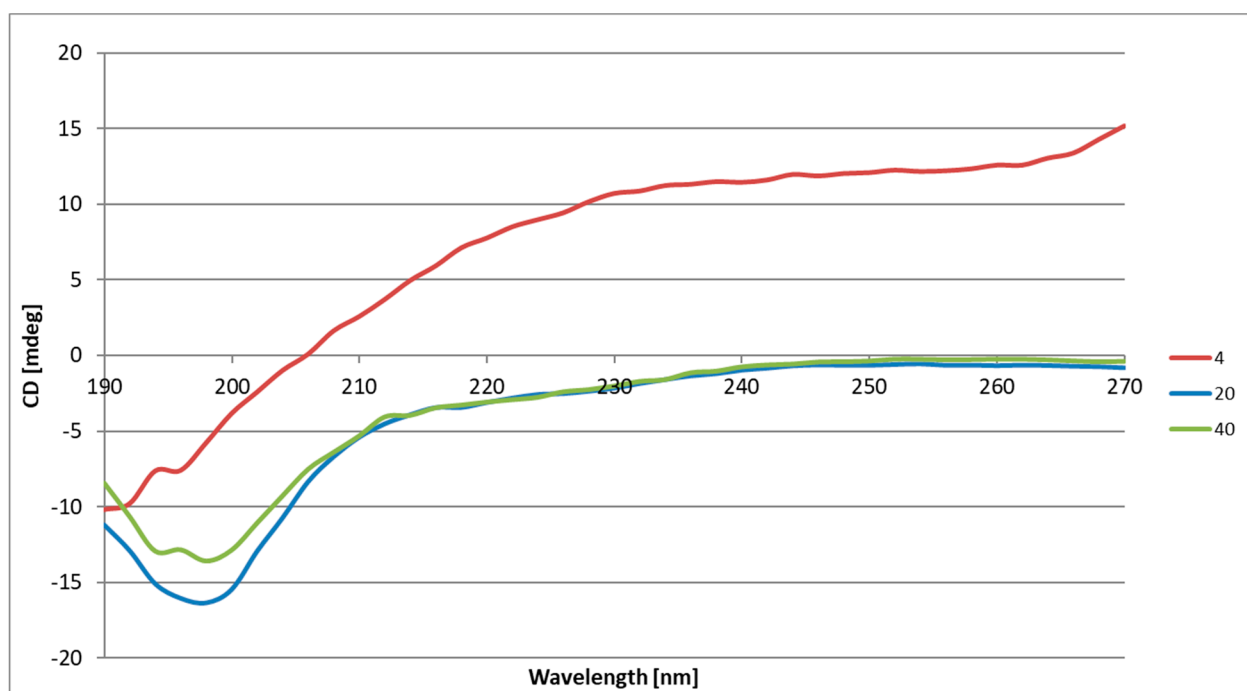


Figure S86. CD spectra of peptide 24.

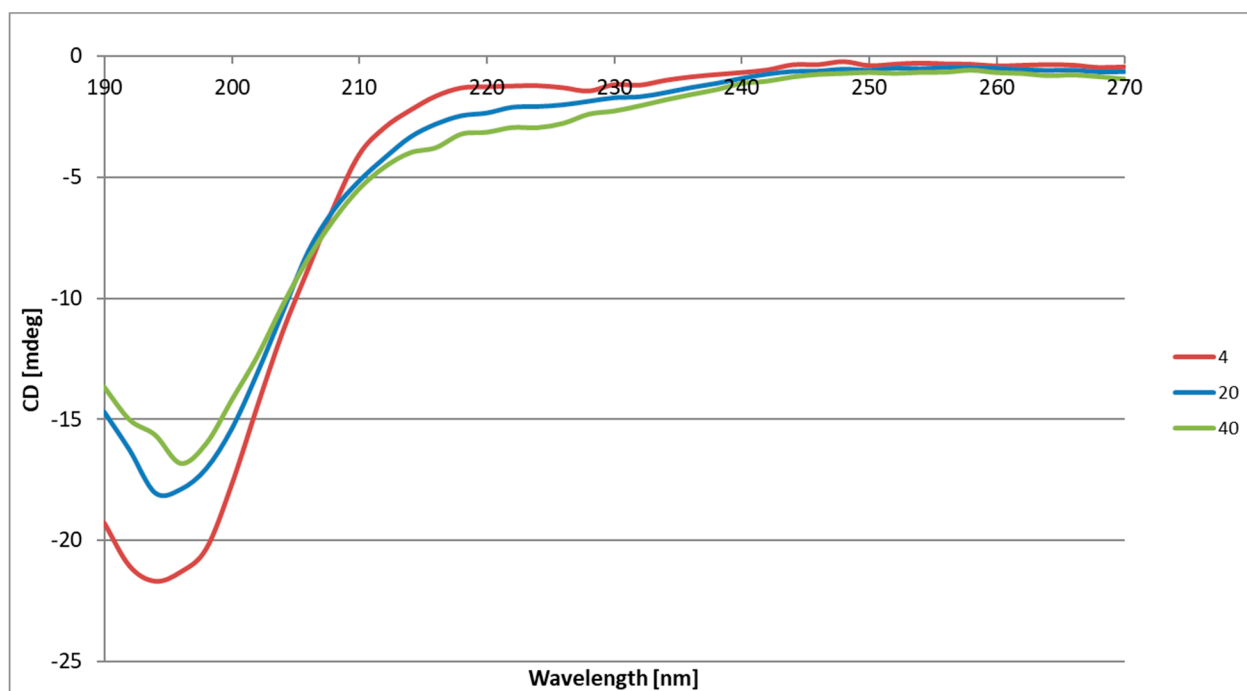


Figure S87. CD spectra of peptide 27.

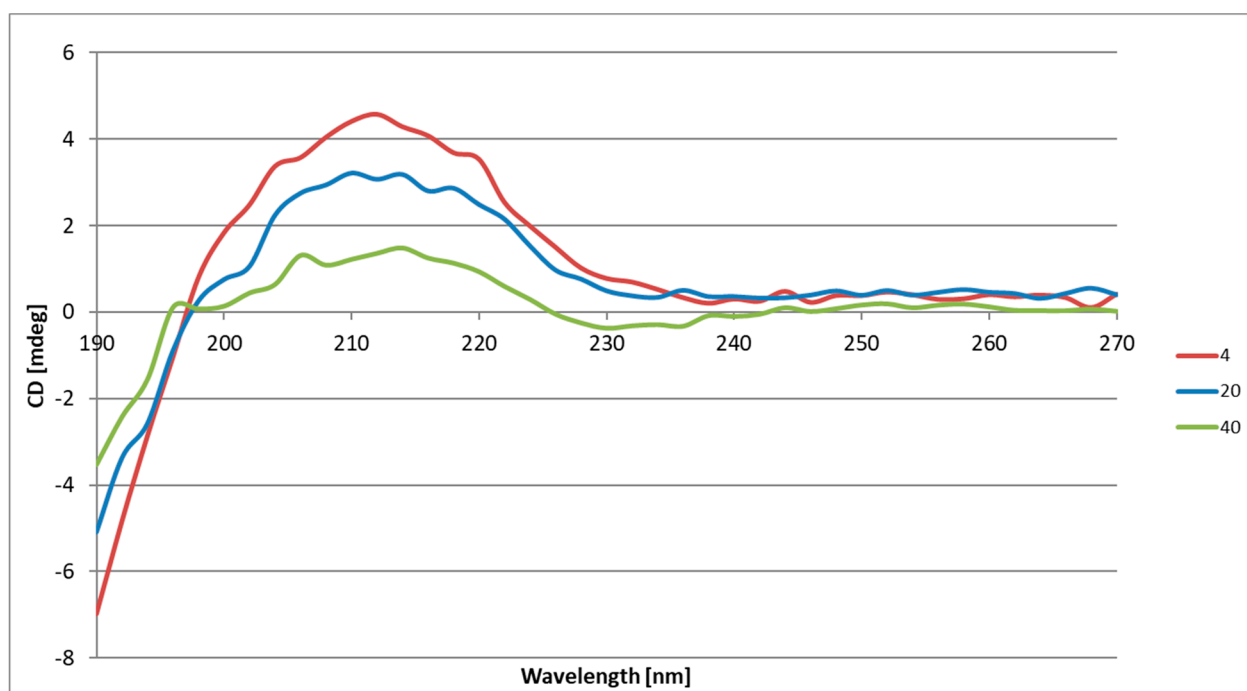


Figure S88. CD spectra of peptide 29.

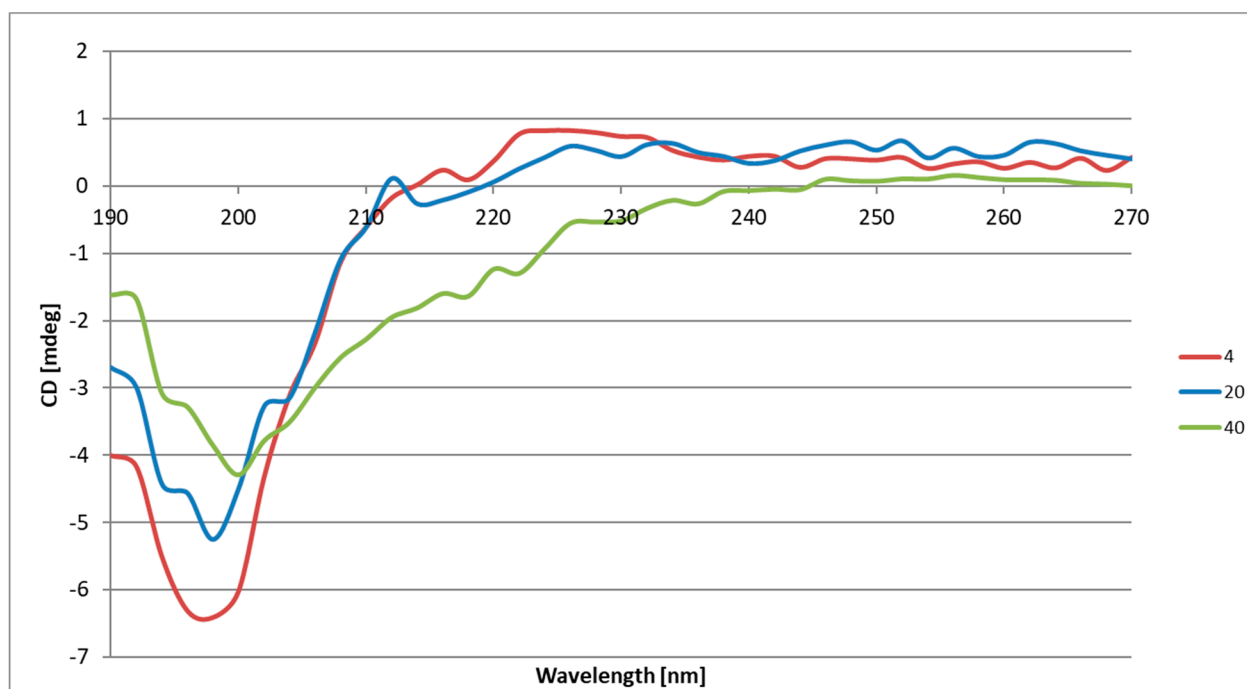


Figure S89. CD spectra of peptide 31.

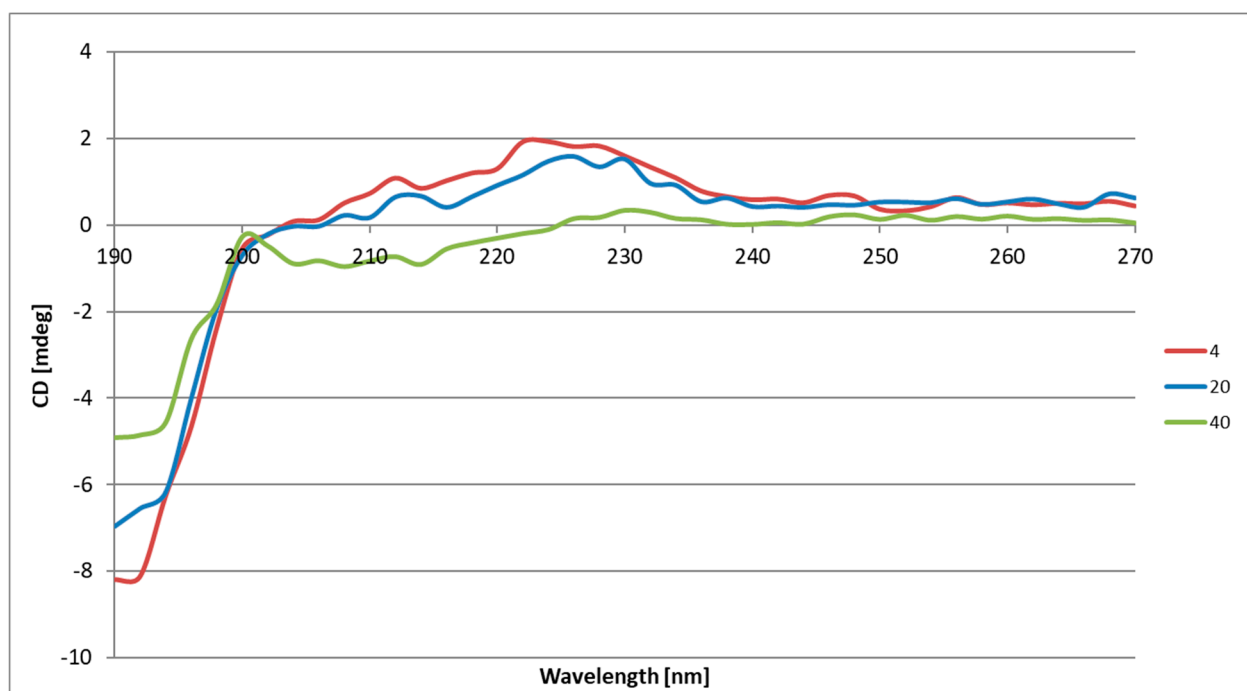
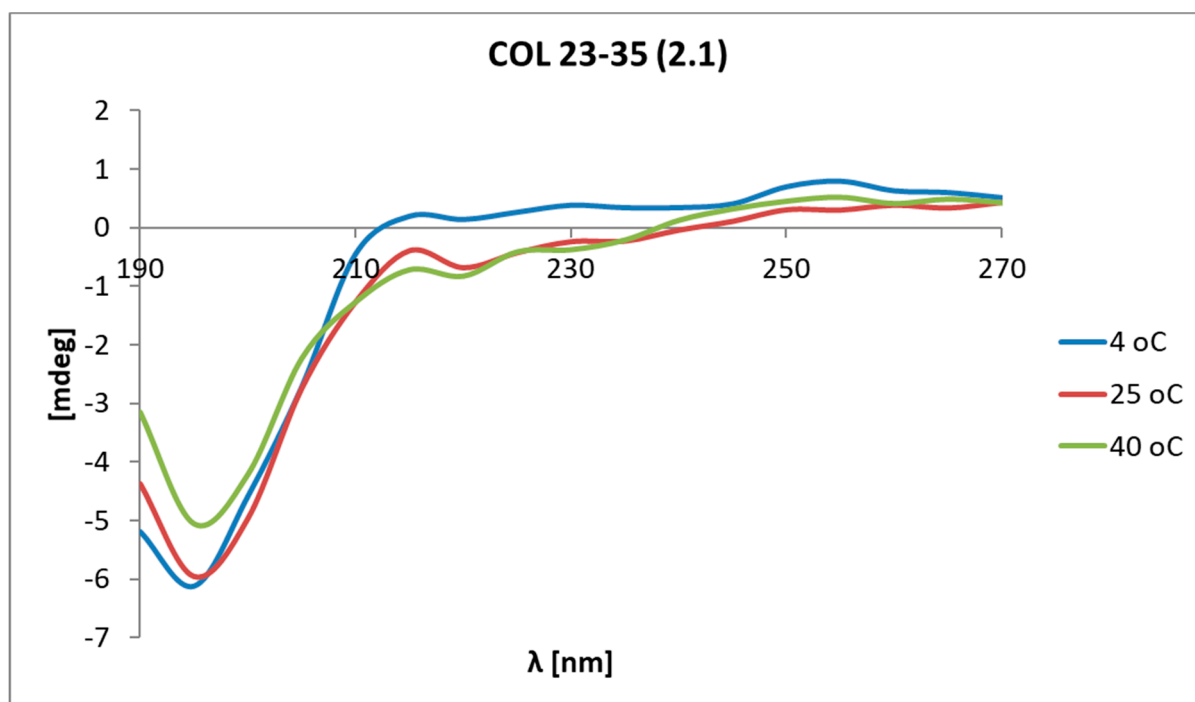


Figure S90. CD spectra of peptide 32.



**Figure S91.** CD spectra of peptide 2.1.