



**Table S1.** Basic information of the NAC genes in *Juglans mandshurica*.

Gene ID	Gene name	Number of amino acids	Molecular weight (MW)	Theoretical pI(pI)	CDS Length	SL	Chromosome
rna-Jman001T0042200.1	JmNAC001	464	51770.78	5.92	1395	Nucleus	1
rna-Jman001T0254600.1	JmNAC002	294	33902.24	8.36	894	Nucleus	1
rna-Jman001T0145400.1	JmNAC003	236	27427.79	5.46	711	Nucleus	1
rna-Jman001T0042300.1	JmNAC004	552	62027.19	4.58	1659	Nucleus	1
rna-Jman001T0289300.1	JmNAC005	378	43706.81	5.74	1137	Nucleus	1
rna-Jman002T0279700.1	JmNAC006	651	74177.15	5.56	1956	Nucleus	2
rna-Jman002T0020400.1	JmNAC007	294	33858.11	5.87	885	Nucleus	2
rna-Jman002T0331500.1	JmNAC008	265	29434.45	4.85	798	Nucleus	2
rna-Jman002T0228100.1	JmNAC009	359	40114.85	4.83	1080	Nucleus	2
rna-Jman002T0349500.1	JmNAC010	267	30729.09	9.31	804	Nucleus	2
rna-Jman002T0309700.1	JmNAC011	558	61752.87	6.62	1677	Nucleus	2
rna-Jman002T0344800.1	JmNAC012	387	43760.68	6.74	1164	Nucleus	2
rna-Jman002T0069800.1	JmNAC013	466	52477.28	6.6	1401	Nucleus	2
rna-Jman002T0226100.1	JmNAC014	132	15770.41	9.6	399	Nucleus	2
rna-Jman002T0260300.1	JmNAC015	332	38409.99	6.31	999	Nucleus	2
rna-Jman002T0328200.1	JmNAC016	309	34511.73	4.88	930	Nucleus	2
rna-Jman002T0139300.1	JmNAC017	249	28051.61	9.41	750	Nucleus	2
rna-Jman002T0231700.1	JmNAC018	195	22452.25	4.81	588	Nucleus	2

rna-Jman002T0235800.1	JmNAC019	289	33329.81	6.02	870	Nu cle us	2
rna-Jman003T0241400.1	JmNAC020	162	19075.76	6.31	489	Nu cle us	3
rna-Jman003T0136500.1	JmNAC021	408	45971.03	7.13	1227	Nu cle us	3
rna-Jman003T0037700.1	JmNAC022	192	22074.6	5.35	579	Nu cle us	3
rna-Jman003T0132000.1	JmNAC023	807	92614.04	6.74	2424	Nu cle us	3
rna-Jman003T0100700.1	JmNAC024	196	22570.87	9.65	591	Nu cle us	3
rna-Jman003T0086200.1	JmNAC025	287	33260.96	7.78	864	Nu cle us	3
rna-Jman003T0000600.1	JmNAC026	381	43553.53	6.77	1146	Nu cle us	3
rna-Jman003T0242400.1	JmNAC027	462	50582.53	4.46	1389	Nu cle us	3
rna-Jman004T0223600.1	JmNAC028	281	30065.44	4.92	846	Nu cle us	4
rna-Jman004T0139000.1	JmNAC029	374	42724.88	5.09	1125	Nu cle us	4
rna-Jman004T0062200.1	JmNAC030	218	25545.17	8.59	657	Nu cle us	4
rna-Jman004T0164800.1	JmNAC031	422	48001.29	5.81	1269	Nu cle us	4
rna-Jman004T0088300.1	JmNAC032	330	37780.19	8.44	993	Nu cle us	4
rna-Jman004T0056500.1	JmNAC033	357	40268.52	7.03	1074	Nu cle us	4
rna-Jman004T0231600.1	JmNAC034	336	38454.06	7.7	1011	Nu cle us	4
rna-Jman004T0161100.1	JmNAC035	436	48451.99	4.75	1311	Nu cle us	4
rna-Jman004T0004400.1	JmNAC036	260	29123.95	7.58	783	Nu cle us	4
rna-Jman004T0231700.1	JmNAC037	365	40462.66	8.15	1098	Nu cle us	4
rna-Jman004T0208200.1	JmNAC038	343	40011.77	6.24	1032	Nu cle us	4

rna-Jman004T0062100.1	JmNAC039	172	20117.74	8.88	519	Nu cle us	4
rna-Jman005T0267700.1	JmNAC040	299	32542.32	6.14	900	Nu cle us	5
rna-Jman005T0188200.1	JmNAC041	373	41718.13	5.6	1122	Nu cle us	5
rna-Jman005T0066100.1	JmNAC042	244	28028.3	4.57	735	Nu cle us	5
rna-Jman005T0151200.1	JmNAC043	243	27671.1	5.28	732	Nu cle us	5
rna-Jman006T0241600.1	JmNAC044	289	33285.52	5.66	870	Nu cle us	6
rna-Jman006T0081100.1	JmNAC045	290	33199.74	7.01	873	Nu cle us	6
rna-Jman006T0029000.1	JmNAC046	1160	132712.83	5.36	3483	Nu cle us	6
rna-Jman006T0194000.1	JmNAC047	311	35149.96	5.75	936	Nu cle us	6
rna-Jman006T0195700.1	JmNAC048	467	52688.32	6.43	1404	Nu cle us	6
rna-Jman006T0084400.1	JmNAC049	198	22937.79	4.82	597	Nu cle us	6
rna-Jman006T0085500.1	JmNAC050	310	35866.12	6.28	933	Nu cle us	6
rna-Jman006T0049900.1	JmNAC051	681	77796.91	5.41	2046	Nu cle us	6
rna-Jman006T0086300.1	JmNAC052	411	45629.43	4.61	1236	Nu cle us	6
rna-Jman006T0007200.1	JmNAC053	365	42030.85	7	1098	Nu cle us	6
rna-Jman006T0145600.1	JmNAC054	282	31947.14	9.04	849	Nu cle us	6
rna-Jman007T0092600.1	JmNAC055	295	33968.83	5.99	888	Nu cle us	7
rna-Jman007T0132600.1	JmNAC056	351	40185.7	4.97	1056	Nu cle us	7
rna-Jman007T0160300.1	JmNAC057	341	38328.96	8.29	1026	Nu cle us	7
rna-Jman007T0004500.1	JmNAC058	468	52902.03	5.01	1407	Nu cle us	7

rna-Jman007T0032300.1	JmNAC059	291	33328.8	6.47	876	Nu cle us	7
rna-Jman007T0081000.1	JmNAC060	375	41669.51	7.04	1128	Nu cle us	7
rna-Jman007T0183200.1	JmNAC061	228	25996.11	5.06	687	Nu cle us	7
rna-Jman007T0010900.1	JmNAC062	538	61196.44	4.8	1617	Nu cle us	7
rna-Jman007T0128700.1	JmNAC063	343	39394.17	7.23	1032	Nu cle us	7
rna-Jman007T0058200.1	JmNAC064	285	31801.86	6.15	858	Nu cle us	7
rna-Jman008T0090700.1	JmNAC065	374	41947.89	9.18	1125	Nu cle us	8
rna-Jman008T0060700.1	JmNAC066	376	43031.34	6.5	1131	Nu cle us	8
rna-Jman008T0205900.1	JmNAC067	303	34277.44	6.54	912	Nu cle us	8
rna-Jman008T0256800.1	JmNAC068	265	30268.81	6.01	798	Nu cle us	8
rna-Jman008T0216000.1	JmNAC069	347	38155.58	8.42	1044	Nu cle us	8
rna-Jman008T0111400.1	JmNAC070	335	38413.39	8.72	1008	Nu cle us	8
rna-Jman009T0000400.1	JmNAC071	388	43665.14	6.36	1167	Nu cle us	9
rna-Jman009T0034100.1	JmNAC072	364	41481.46	5.34	1095	Nu cle us	9
rna-Jman009T0135400.1	JmNAC073	327	37286.09	8.29	984	Nu cle us	9
rna-Jman009T0055100.1	JmNAC074	307	34822.89	6.95	924	Nu cle us	9
rna-Jman009T0012900.1	JmNAC075	269	30686.87	5.56	810	Nu cle us	9
rna-Jman010T0030200.1	JmNAC076	547	61674.8	4.65	1644	Nu cle us	10
rna-Jman010T0173400.1	JmNAC077	517	59629.45	6.28	1554	Nu cle us	10
rna-Jman010T0176100.1	JmNAC078	416	46879.98	5.87	1251	Nu cle us	10

rna-Jman011T0121400.1	JmNAC079	314	35194.61	5.16	945	Nu cle us	11
rna-Jman011T0042100.1	JmNAC080	706	77661.55	5.06	2121	Nu cle us	11
rna-Jman011T0147600.1	JmNAC081	194	22380.84	9.83	585	Nu cle us	11
rna-Jman011T0160100.1	JmNAC082	311	35891.96	6.11	936	Nu cle us	11
rna-Jman011T0042200.1	JmNAC083	516	57091.17	4.52	1551	Nu cle us	11
rna-Jman011T0042400.1	JmNAC084	831	93936.83	4.92	2496	Nu cle us	11
rna-Jman011T0124700.1	JmNAC085	280	32251.37	8.22	843	Nu cle us	11
rna-Jman012T0120300.1	JmNAC086	339	38719.67	8.27	1020	Nu cle us	12
rna-Jman012T0193900.1	JmNAC087	362	40968.35	4.74	1089	Nu cle us	12
rna-Jman012T0162800.1	JmNAC088	407	45992.82	6.62	1224	Nu cle us	12
rna-Jman012T0162900.1	JmNAC089	77	8773.86	4.21	234	Nu cle us	12
rna-Jman012T0194400.1	JmNAC090	362	40937.34	4.74	1089	Nu cle us	12
rna-Jman012T0194200.1	JmNAC091	362	41013.35	4.74	1089	Nu cle us	12
rna-Jman012T0185900.1	JmNAC092	213	24127.68	7.66	642	Nu cle us	12
rna-Jman012T0164200.1	JmNAC093	362	41013.35	4.74	747	Nu cle us	12
rna-Jman013T0187000.1	JmNAC094	378	41860.33	9.31	1137	Nu cle us	13
rna-Jman013T0129100.1	JmNAC095	386	43392.15	6.8	1161	Nu cle us	13
rna-Jman014T0070800.1	JmNAC096	416	47477.7	5.62	1251	Nu cle us	14
rna-Jman014T0022400.1	JmNAC097	353	40089.96	6.76	1062	Nu cle us	14
rna-Jman014T0086200.1	JmNAC098	344	38987.75	5.47	1035	Nu cle us	14

rna-Jman014T0022300.1	JmNAC099	362	40123.14	8.84	1089	Nu cle us	14
rna-Jman014T0154400.1	JmNAC100	356	40306.47	8.25	1071	Nu cle us	14
rna-Jman014T0038300.1	JmNAC101	355	41498.14	6.48	1068	Nu cle us	14
rna-Jman014T0175400.1	JmNAC102	236	26646.9	8.62	711	Nu cle us	14
rna-Jman014T0027000.1	JmNAC103	415	45933.85	8.93	1248	Nu cle us	14
rna-Jman014T0158600.1	JmNAC104	304	34249.64	6.71	915	Nu cle us	14
rna-Jman015T0044000.1	JmNAC105	475	52812.87	8.56	1428	Nu cle us	15
rna-Jman015T0072700.1	JmNAC106	297	34079.45	8.36	894	Nu cle us	15
rna-Jman015T0042500.1	JmNAC107	243	27616.14	6.46	732	Nu cle us	15
rna-Jman016T0028600.1	JmNAC108	285	32441.76	8.42	858	Nu cle us	16
rna-Jman016T0046500.1	JmNAC109	292	32490.67	6.12	879	Nu cle us	16
rna-Jman016T0085400.1	JmNAC110	325	37219.97	8.09	978	Nu cle us	16
rna-Jman016T0115200.1	JmNAC111	246	28556.07	5.26	741	Nu cle us	16
rna-Jman016T0062100.1	JmNAC112	340	37481.86	4.87	1023	Nu cle us	16
rna-Jman016T0096400.1	JmNAC113	333	37809.36	6.45	1002	Nu cle us	16
rna-Jman016T0006600.1	JmNAC114	566	63625.84	5.02	1701	Nu cle us	16

Table S2. Primer sequences of *J. mandshurica*.

Gene name	Forward primer (F)	Reverse primer (R)
18s RNA	GAGGTAGCTTCGGGCGCAACT	GCAGGTTAGCGAAATGCGATAC
<i>JmNAC105</i>	GACCCATCAGCTTTCTCTTCACCC	AGTCAGGCCATCTCTCAACCTCAGT
<i>JmNAC104</i>	ATGCGATTACTTGATGGGGAAGGCC	ACCAAGATGATGATGAGGGGATCGA
<i>JmNAC108</i>	CGGTGGCGATGGTCCCTTTCTTAAA	TTGCTTCCCGATACTGCCCTTCTTG
<i>JmNAC085</i>	TGGTACTTCTTTAGCCCGCGTGATC	AAACACCAGAGCTTTCTTCACCCCA
<i>JmNAC001</i>	CGGTTTCTCCTCCATTTGATCCTGCT	GCGAATCATGGTTTGGGCACTCATC
<i>JmNAC045</i>	TGCGTCGTGGGTCAAGCTTAATCTT	CCACTCCTTTTCACCGTACAGAGCC
<i>JmNAC023</i>	AACGAGTGGTACTTCTTTAGCCCGC	ACACAAGAGCTTTCTTCACCCCAACA
<i>JmNAC071</i>	TGGGTTGTCTGCAGAGTTTCCACA	ACAGCTAGGCCTTTCGTTGTTGGAA
<i>JmNAC019</i>	TCATCAATGATCACCGGCGACCAAT	TCTCCTCCCACTTGGCTTCACTTG
<i>JmNAC010</i>	CTCTATCCCATTGCCGGCTTCAGTC	ACAAACACACACACACACACCT
<i>JmNAC097</i>	TCAAAGTGAACCCATAACTCAGCGG	TTTTACTGTTCGGAACCTCGGAACCC
<i>JmNAC059</i>	TCTTTTCGCCTAGGGACCGGAAGTA	TGCCGGAGTAAAACACAAGAGCCTT

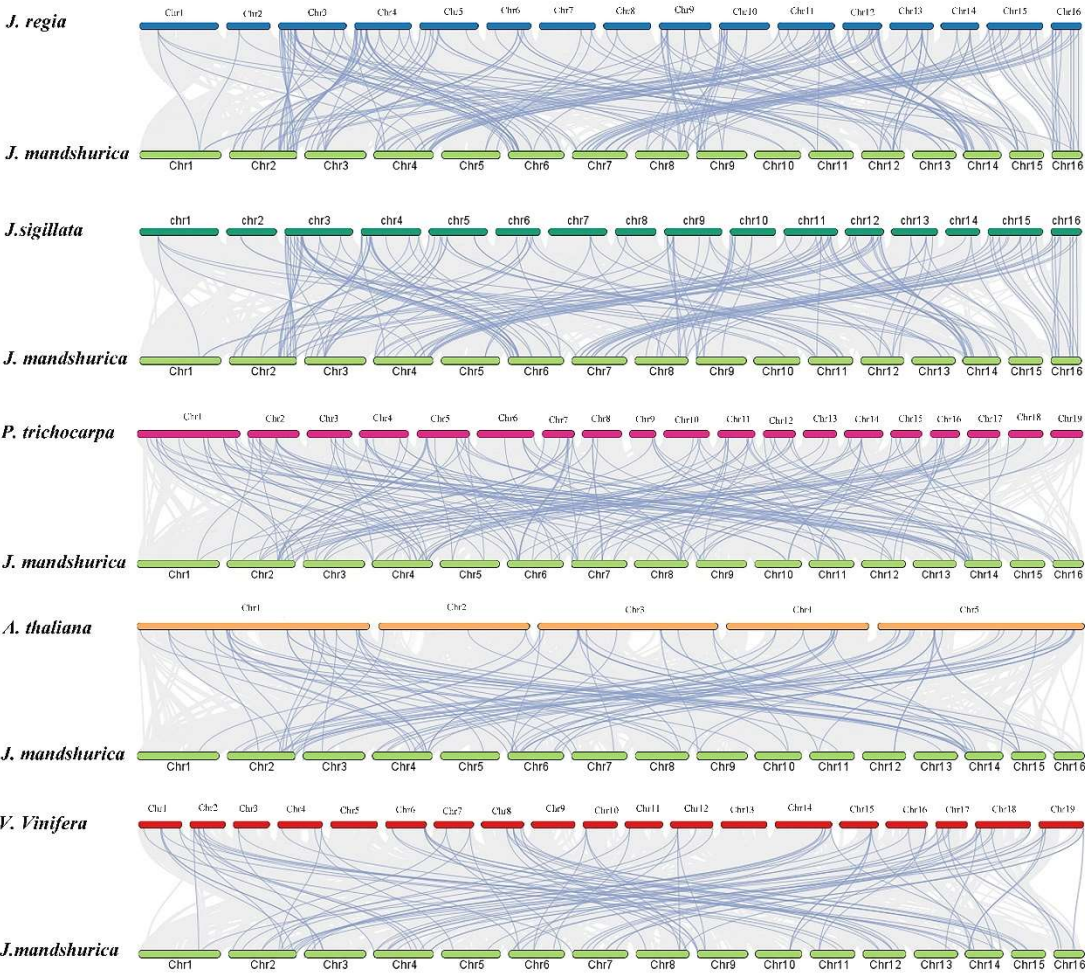


Figure S1. Synteny analysis of NAC genes in *J. mandshurica* and five representative plant species. Grey lines in the background indicate collinear blocks within *J. mandshurica* and other plant genomes, whereas blue lines highlight syntenic *JmNAC* gene pairs.