

Clinical and Prognostic Value of Antigen-Presenting Cells with PD-L1/PD-L2 Expression in Ovarian Cancer Patients

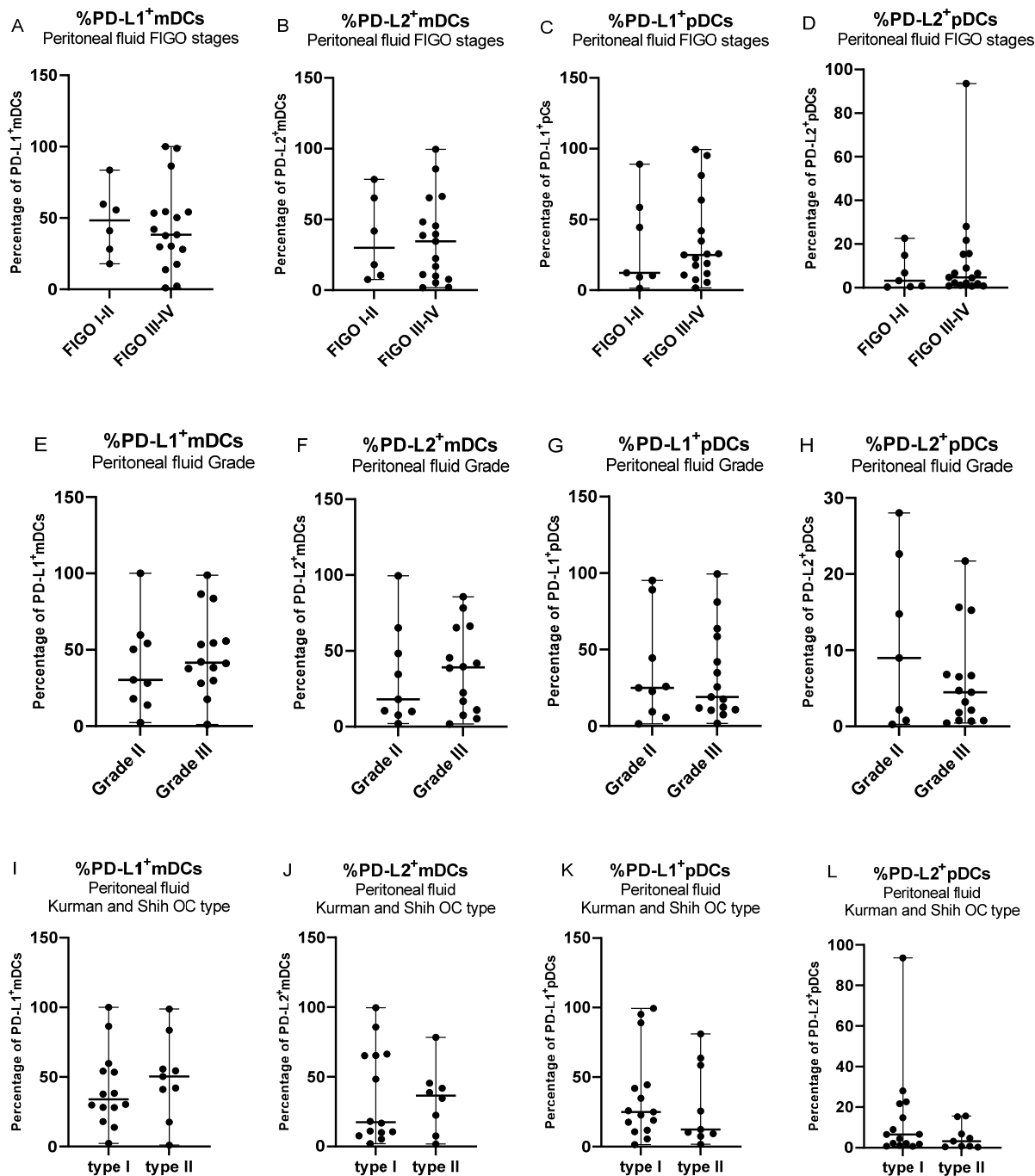


Figure S1. Distribution of mDCs and pDCs with PD-L1 and PD-L2 expression in peritoneal fluid of ovarian cancer patients with different FIGO stages (A–D), grade (E–H), and OC types (I–L).

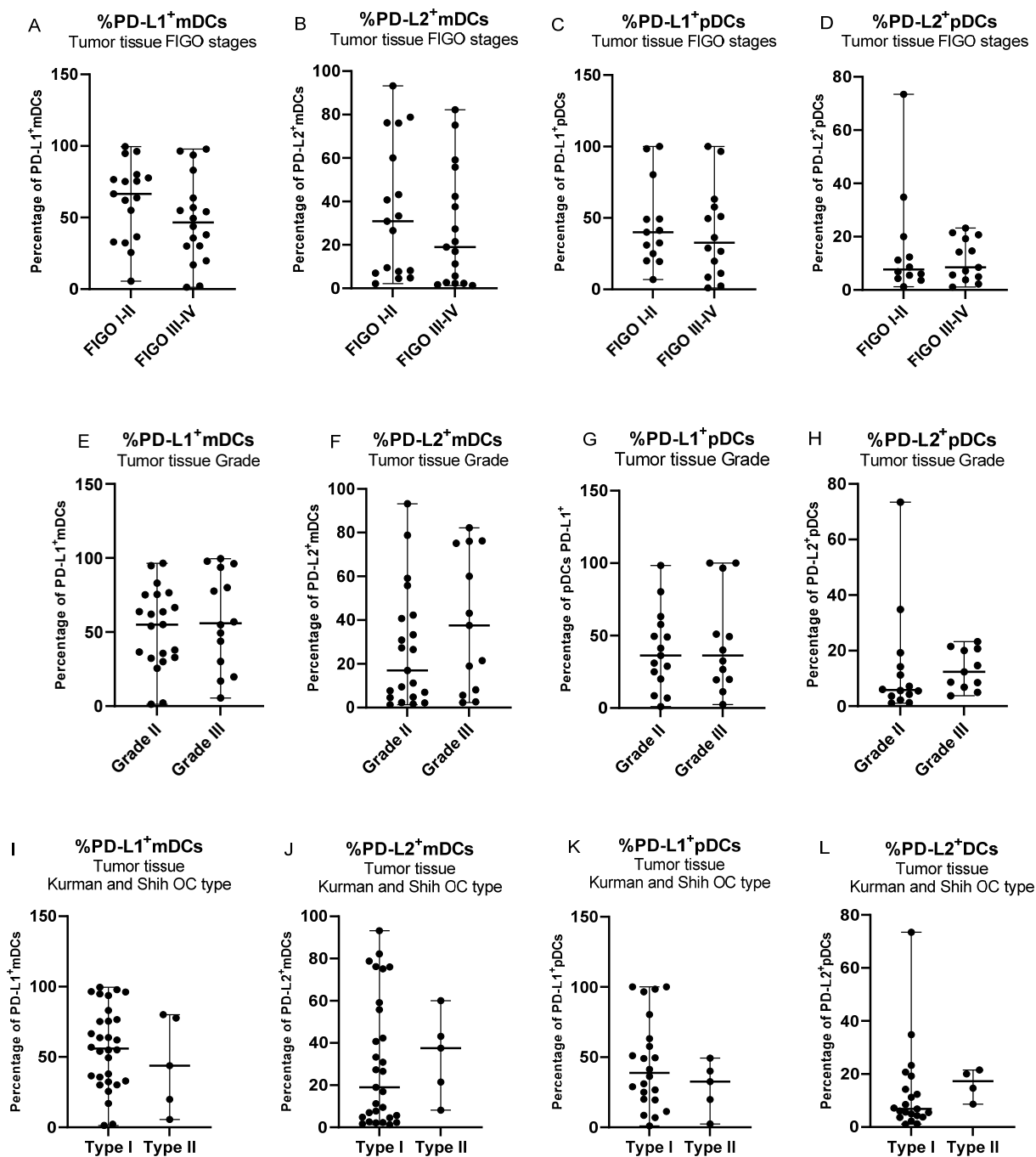


Figure S2. Distribution of mDCs and pDCs with PD-L1 and PD-L2 expression in tumor tissue of ovarian cancer patients with different FIGO stages (A–D), grade (E–H), and OC types (I–L).

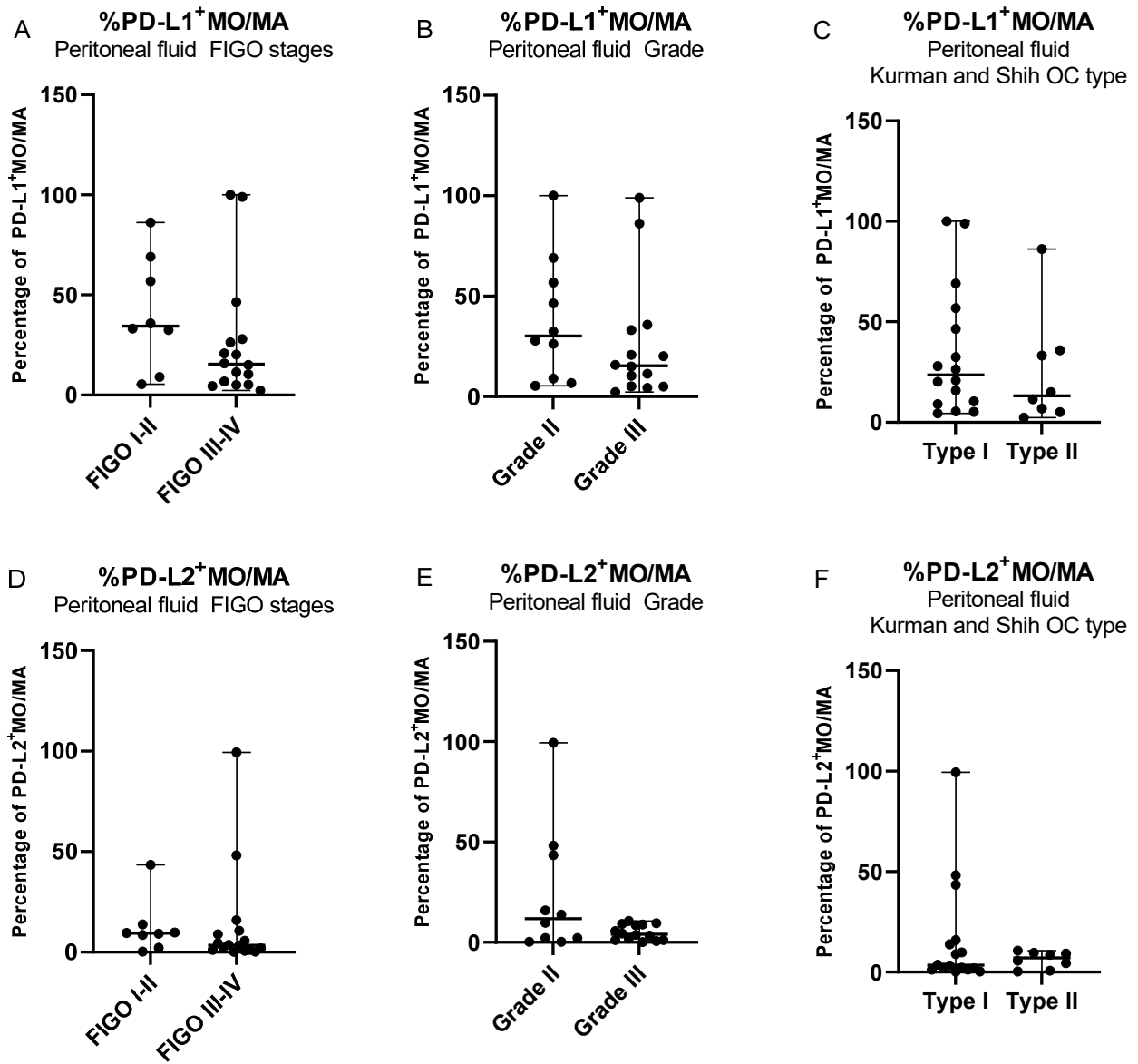


Figure S3. Distribution of MO/MA with PD-L1 and PD-L2 expression in peritoneal fluid of ovarian cancer patients with different FIGO stages (A, D), grade (B, E), and OC types (C, F).

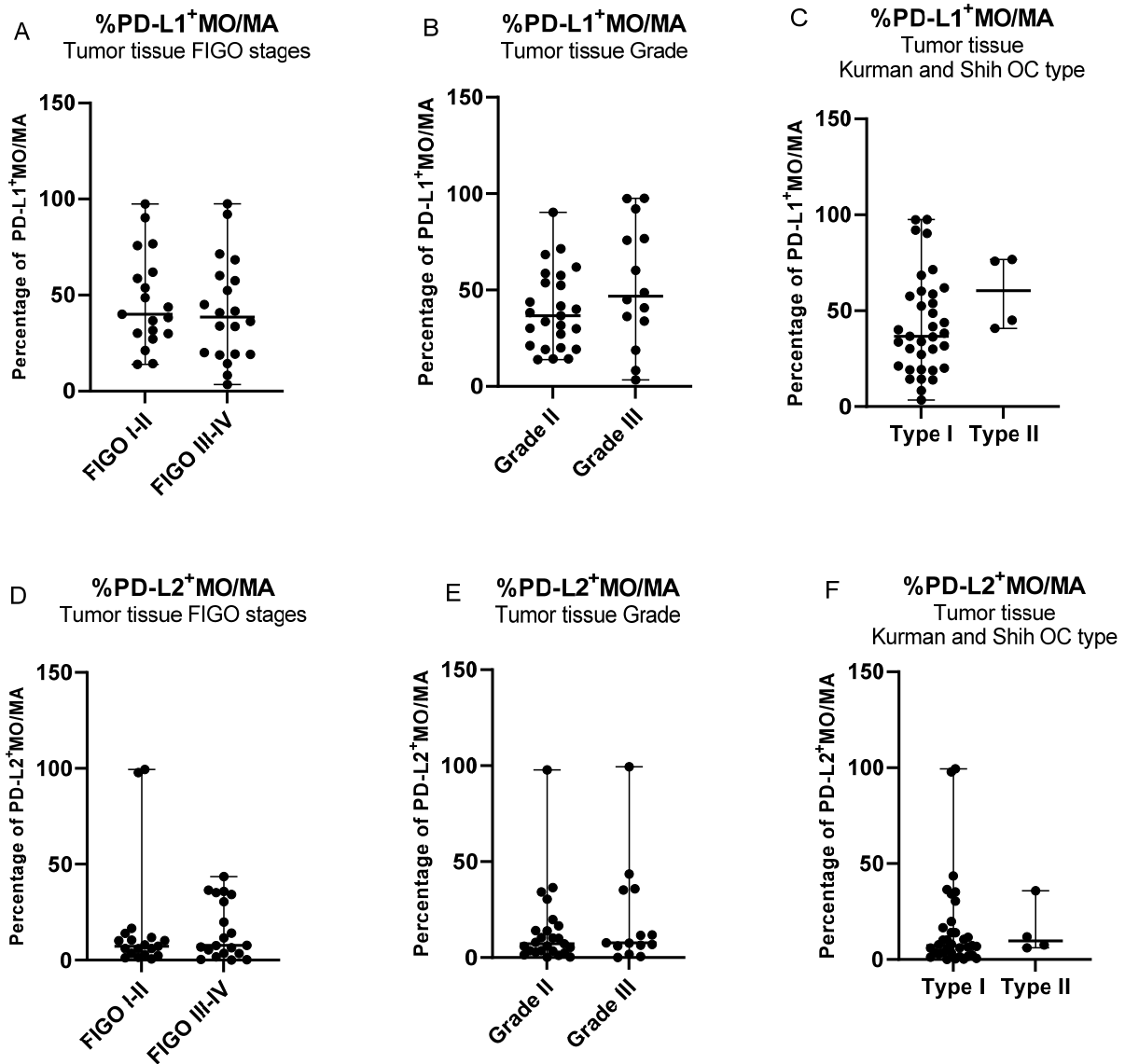


Figure S4. Distribution of MO/MA with PD-L1 and PD-L2 expression in tumor tissue of ovarian cancer patients with different FIGO stages (A, D), grade (B E), and OC types (C, F).