

Supporting Information

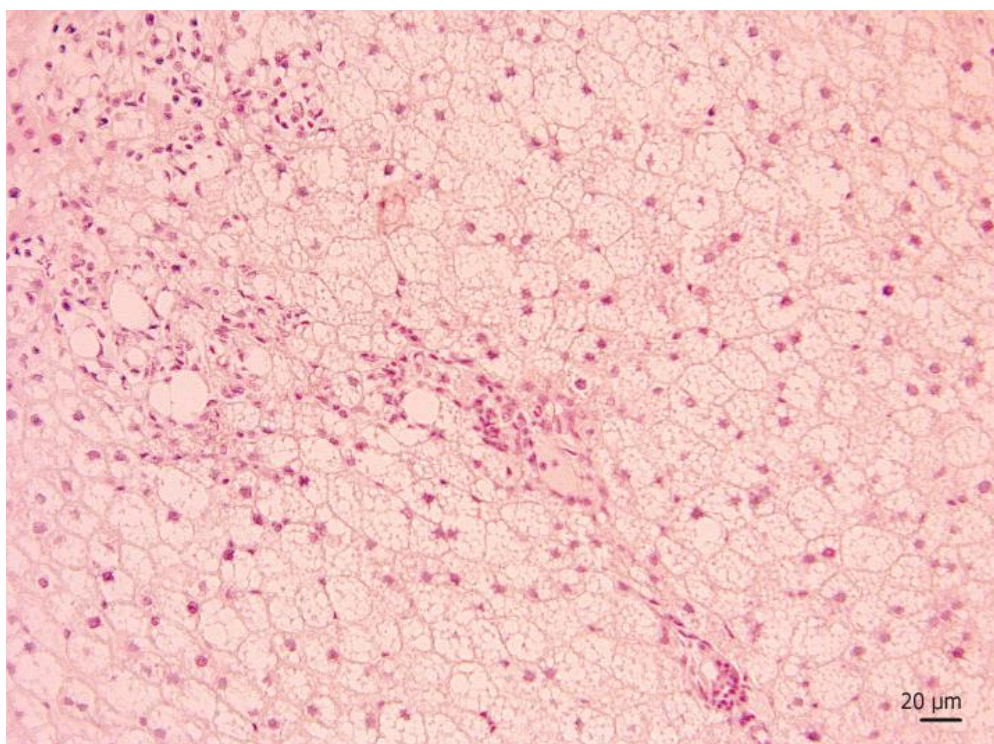
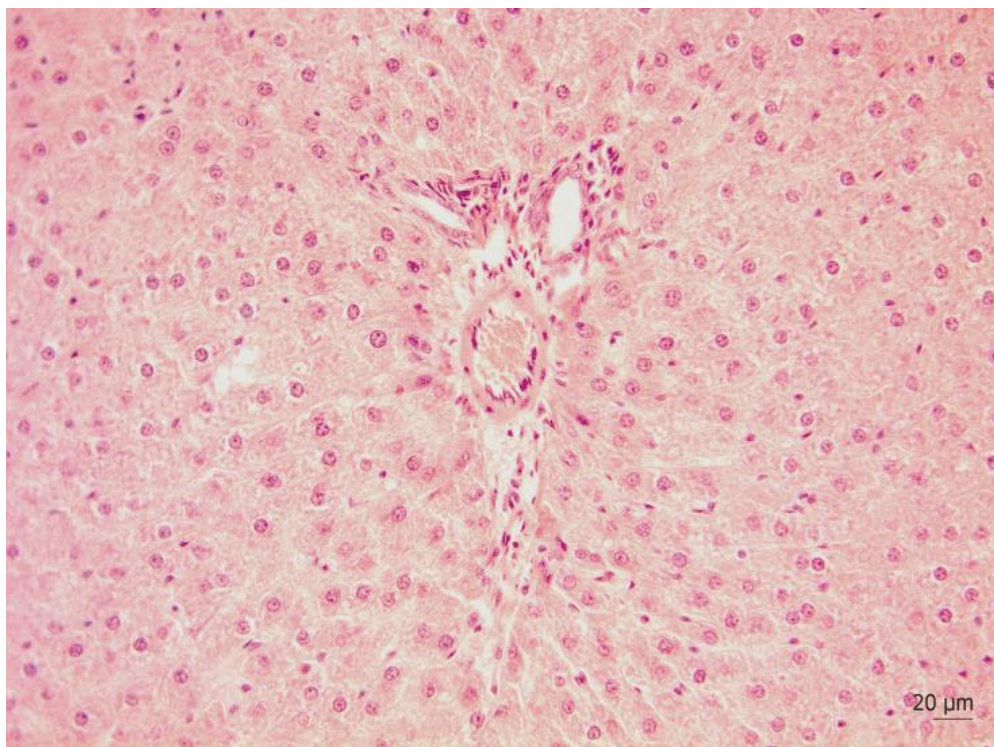


Figure S1. Hematoxylin and eosin (H&E) staining enhances the morphological features of liver from CHOW rats (and rats fed with cafeteria diet (in which wide areas of extensive microvesicular steatosis (and scattered macrovesicular steatosis arrow head is evident showing a preferential periportal localization) Small infiltrating lymphocytes are evident (Calibration bar 20 μm).

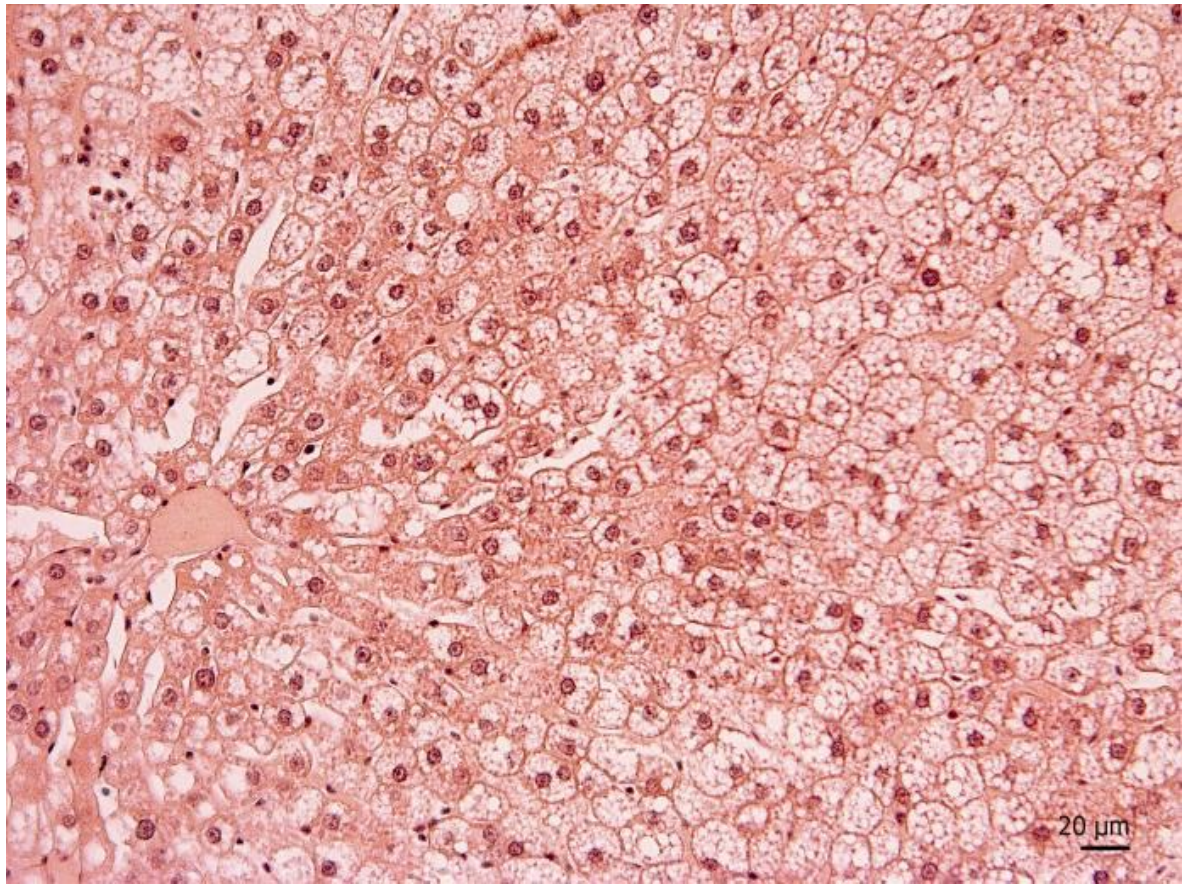


Figure S2. Hematoxylin and eosin (H&E) staining enhances the morphological features of liver from CHOW+P rats, in which wide areas of microvesicular steatosis (and scattered macrovesicular steatosis (arrow head) are evident. Extension of the centrolobular zones with preserved hepatocytes are present. Calibration bar 20 μm.