

---

# Supplementary Materials: Virtual alanine scan of severe acute respiratory syndrome coronavirus 2 main protease active site

Tomoki Nakayoshi <sup>1,2</sup>, Koichi Kato <sup>2,3</sup>, Eiji Kurimoto <sup>2</sup> and Akifumi Oda <sup>2,4,\*</sup>

<sup>1</sup> Graduate School of Information Sciences, Hiroshima City University, 3-4-1 Ozukahigashi, Asaminami-ku, Hiroshima, Hiroshima 731-3194, Japan; nakayoshi@hiroshima-cu.ac.jp (T.N.)

<sup>2</sup> Faculty of Pharmacy, Meijo University, 150 Yagotoyama, Tempaku-ku, Nagoya, Aichi 468-8503, Japan; k-kato@kinjo-u.ac.jp (K.K.); kurimoto@meijo-u.ac.jp (K.K.)

<sup>3</sup> Faculty of Pharmaceutical Sciences, Shonan University of Medical Sciences, 16-48 Kamishinano, Totsuka-ku, Yokohama, Kanagawa 244-0806, Japan

<sup>4</sup> Institute for Protein Research, Osaka University, 3-2 Yamadaoka, Suita, Osaka 565-0871, Japan

\* Correspondence: oda@meijo-u.ac.jp; Tel.: +81-52-832-1151

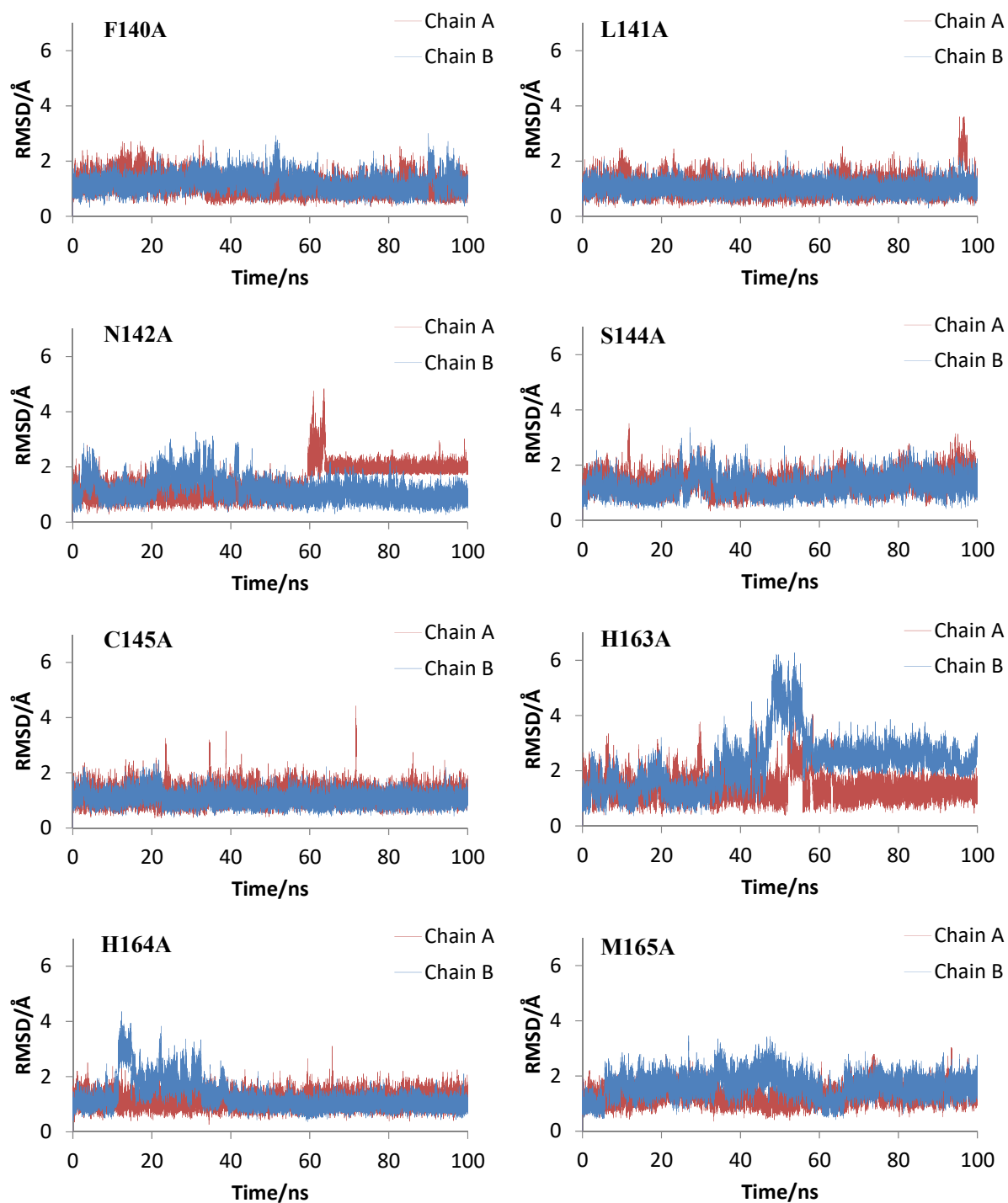


Figure S1. Ligand RMSDs for virtual alanine scanned mutants.

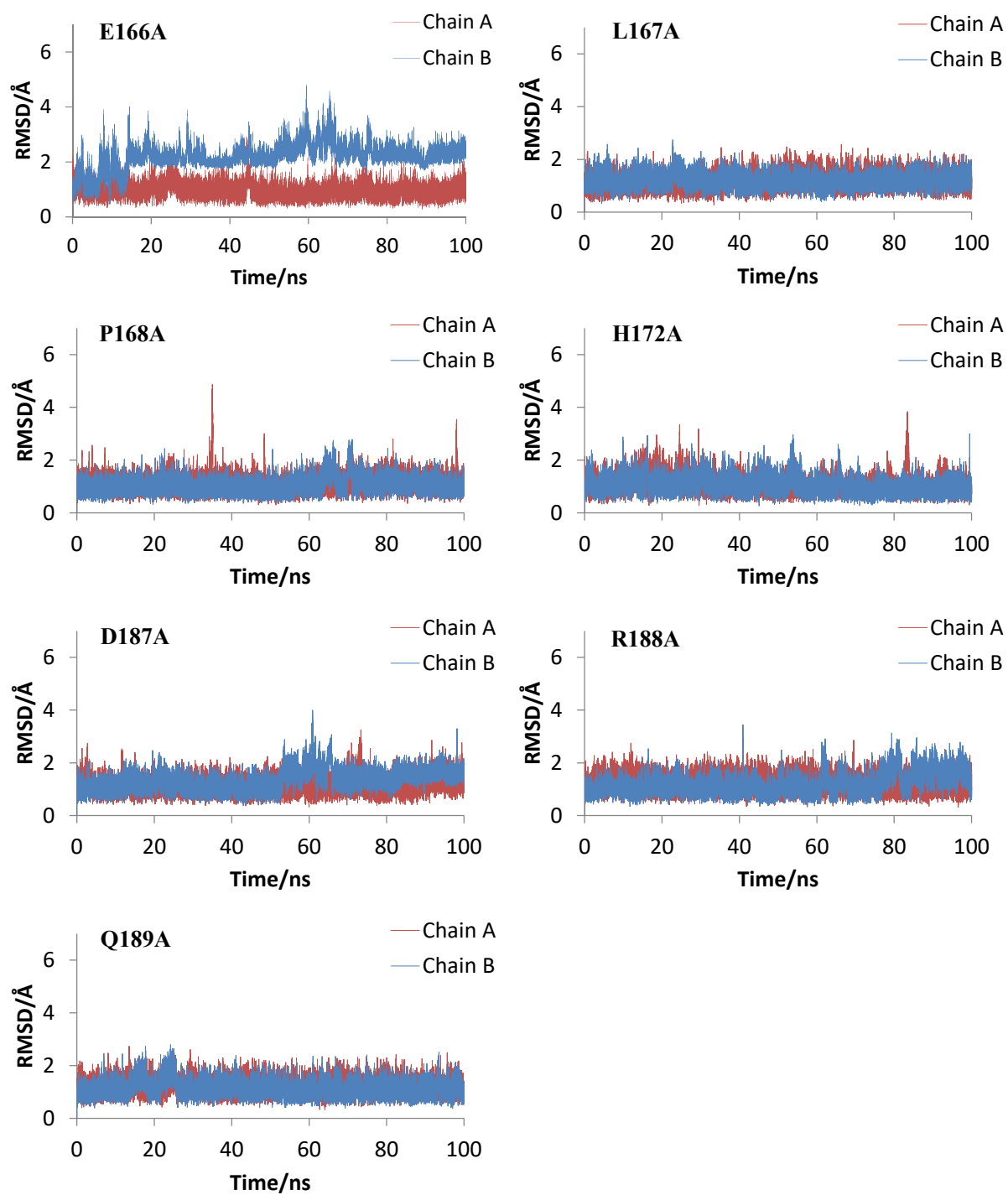


Figure S1. Continued.

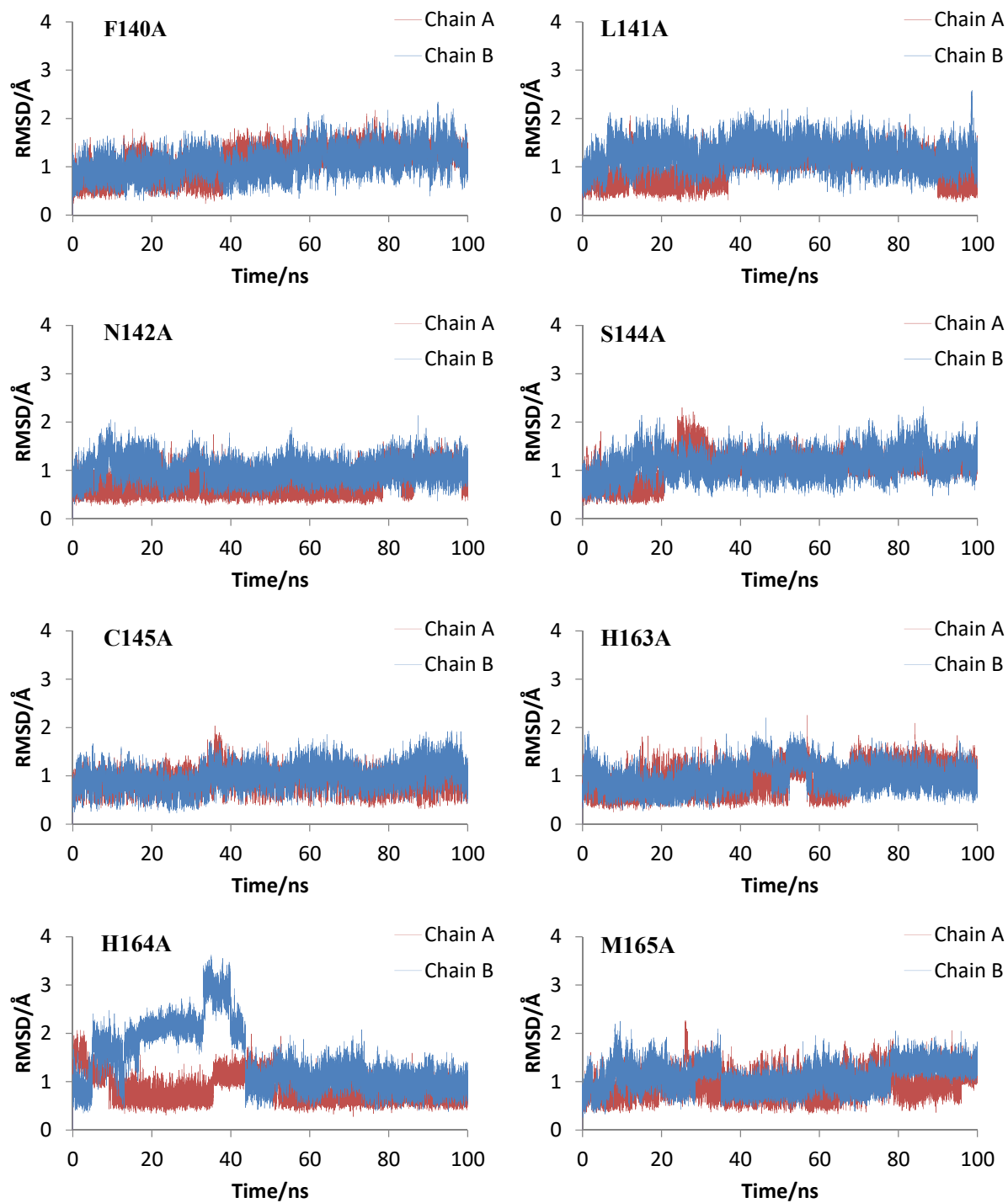


Figure S2. Catalytic dyad RMSDs for virtual alanine scanned mutants.

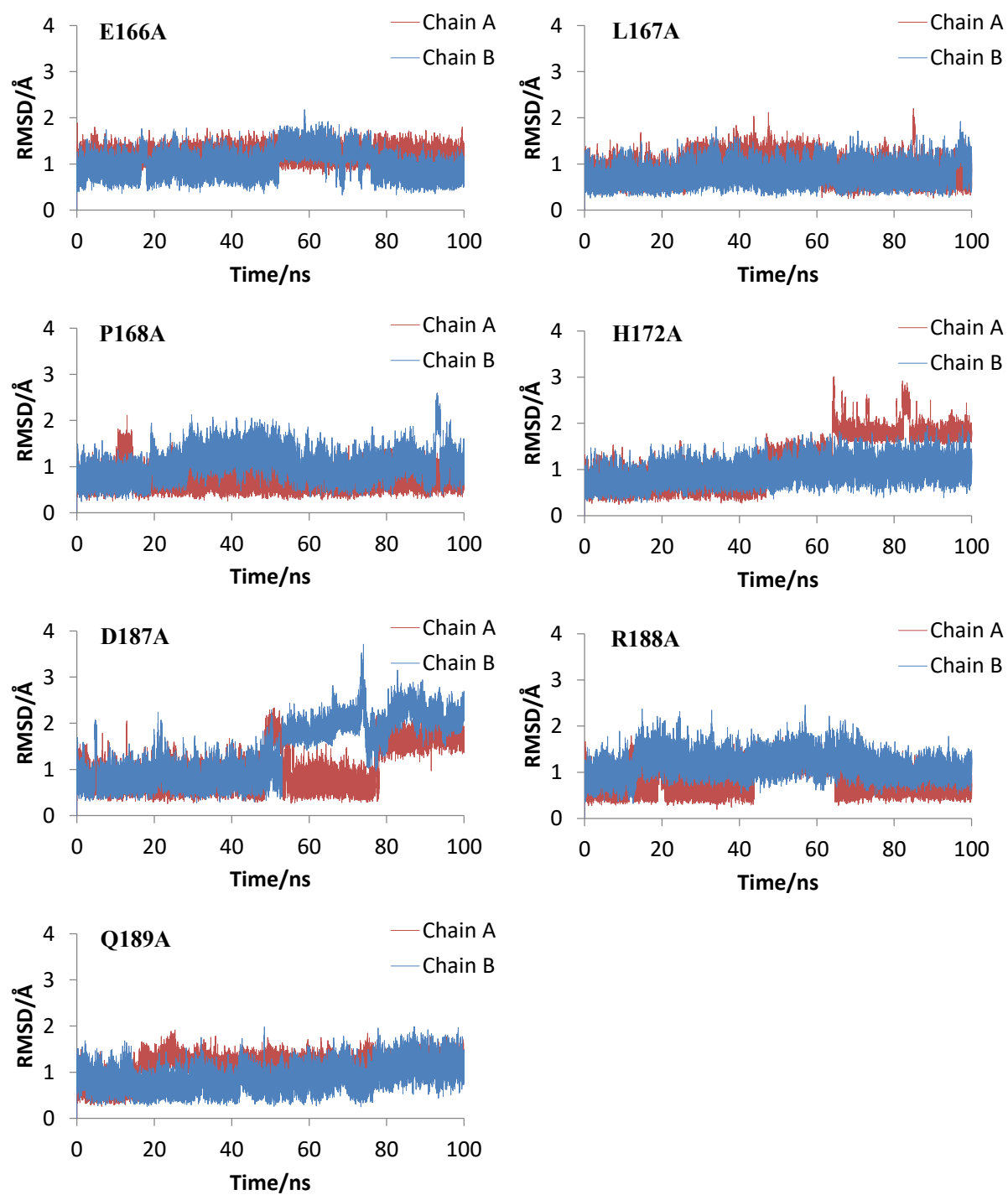


Figure S2. Continued.