

Comparative proteomic and metabolomic analysis of human osteoblasts, differentiated from dental pulp stem cells, hinted crucial signaling pathways promoting osteogenesis

Slavomíra Nováková^{1*#}, Maksym Danchenko^{2#}, Terézia Okajčeková¹, Eva Baranovičová¹, Andrej Kováč³, Marián Grendár¹, Gábor Beke⁴, Janka Pálešová¹, Ján Strnádel¹, Mária Janíčková⁵, Erika Halašová^{1,6} and Henrieta Škovierová^{1*}

¹Biomedical Centre Martin, Jessenius Faculty of Medicine in Martin, Comenius University in Bratislava (JFM CU), Malá Hora 4C; 036 01 Martin, Slovak Republic

²Plant Science and Biodiversity Center, Slovak Academy of Sciences, Dúbravská cesta 9, 845 23 Bratislava, Slovak Republic

³Institute of Neuroimmunology, Slovak Academy of Sciences; Dúbravská cesta 9, 845 10 Bratislava, Slovak Republic

⁴Institute of Molecular Biology, Slovak Academy of Sciences; Dúbravská cesta 21, 845 51 Bratislava, Slovak Republic

⁵Department of Stomatology and Maxillofacial Surgery, University Hospital in Martin and JFM CU, Kollárova 2, 036 01 Martin, Slovak Republic

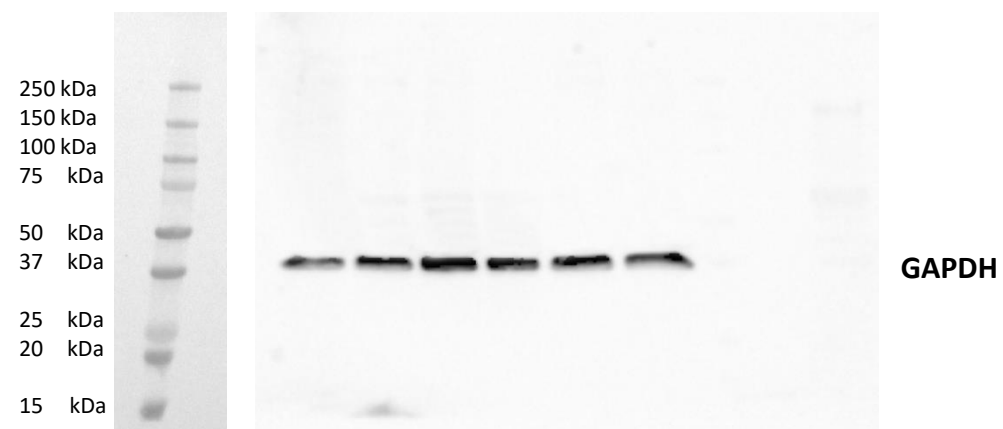
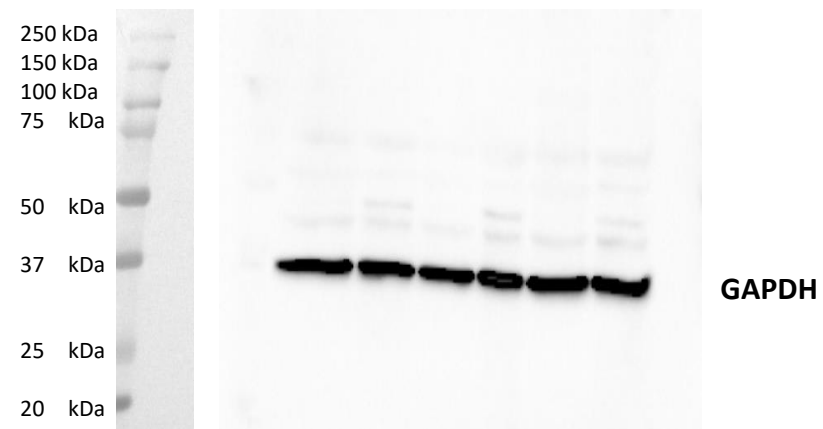
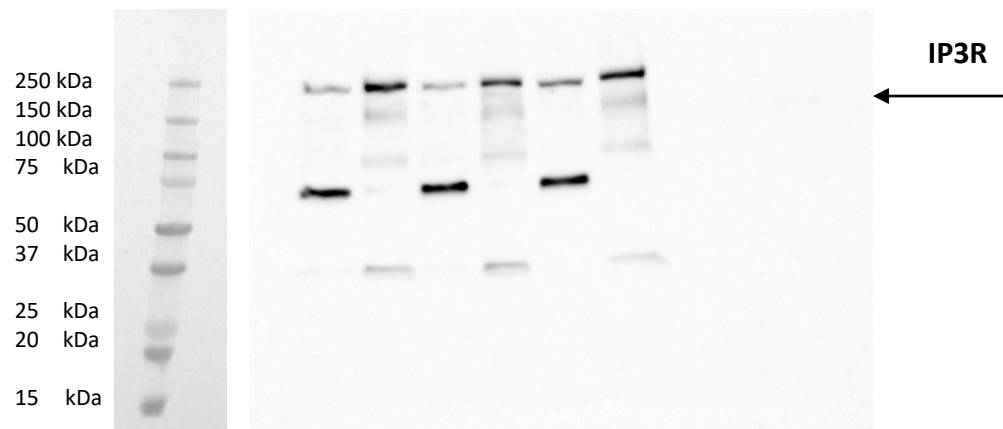
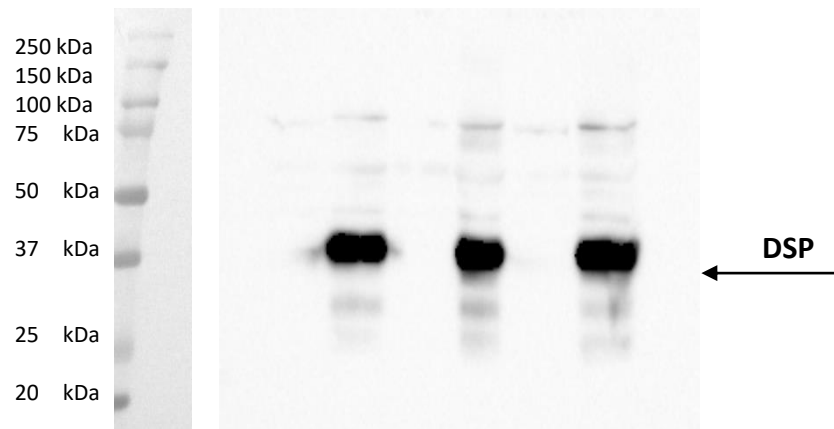
⁶Department of Medical Biology, Jessenius Faculty of Medicine in Martin, Comenius University in Bratislava (JFM CU), Malá Hora 4, 036 01 Martin, Slovak Republic

*Correspondence: henrieta.skovierova@uniba.sk; Tel.: +421 43 2633 904 (H.S.)
slavomira.novakova@uniba.sk; Tel.: +421 43 2633 904 (S.N.)

Both authors contributed equally to this work

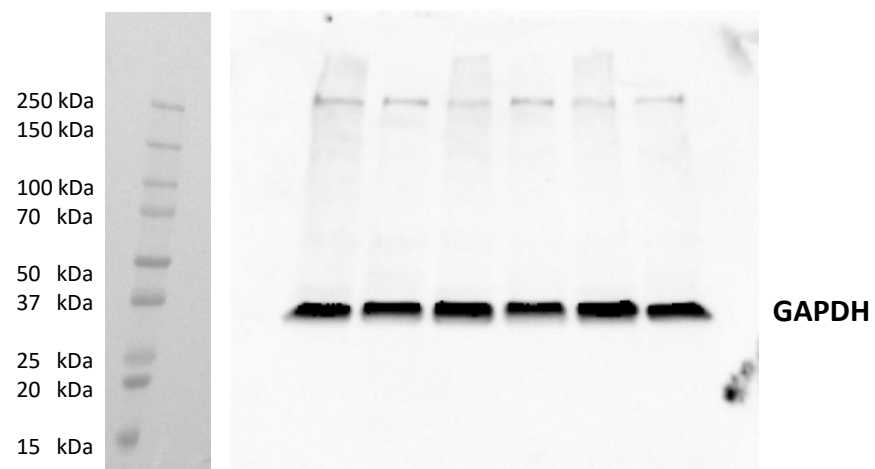
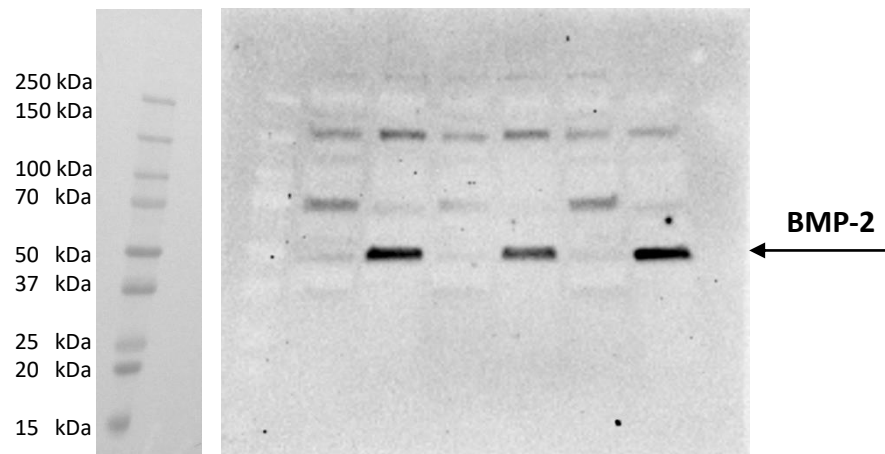
Table of content

Original Images for Blots

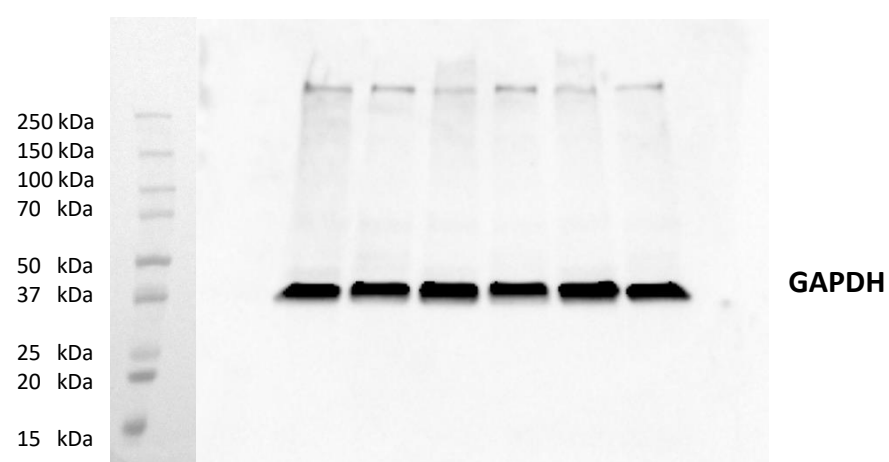


CTRL	DIFF	CTRL	DIFF	CTRL	DIFF
1. BR		2. BR		3. BR	

CTRL	DIFF	CTRL	DIFF	CTRL	DIFF
1. BR		2. BR		3. BR	



CTRL		DIFF		CTRL		DIFF		CTRL		DIFF	
1. BR		2. BR		3. BR							



CTRL		DIFF		CTRL		DIFF		CTRL		DIFF	
1. BR		2. BR		3. BR							

