



Supplementary Material

Peptide/ β -Peptoid Hybrids with Ultrashort PEG-Like Moieties: Effects on Hydrophobicity, Antibacterial Activity and Hemolytic Properties

Nicki Frederiksen ¹, Stavroula Louka ¹, Chirag Mudaliar ¹, Ilona Domraceva ², Agrita Kreicberga ², Osvalds Pugovics ², Dorota Żabicka ³, Magdalena Tomczak ³, Weronika Wygoda ³, Fredrik Björkling ¹ and Henrik Franzyk ^{1,*}

¹ Center for Peptide-Based Antibiotics, Department of Drug Design and Pharmacology, Faculty of Health and Medical Sciences, University of Copenhagen, DK-2100 Copenhagen, Denmark; nicki.frederiksen@sund.ku.dk (N.F.); stavroulaloukad@gmail.com (S.L.); chiragmudaliar@gmail.com (C.M.); fb@sund.ku.dk (F.B.)

² Latvian Institute of Organic Synthesis, Aizkraukles 21, 1006 Riga, Latvia; ilona@farm.osi.lv (I.D.); agrita.kreicberga@osi.lv (A.K.); osvalds@osi.lv (O.P.)

³ Department of Epidemiology and Clinical Microbiology, National Medicines Institute, ul. Chełmska 30/34, 00-725 Warsaw, Poland; d.zabicka@nil.gov.pl (D.Ż.); mtomczak@cls.edu.pl (M.T.); w.wygoda@nil.gov.pl (W.W.)

* Correspondence: henrik.franzyk@sund.ku.dk

Contents

2	Estimation of log D values
3	Calculation of log D values
4	Characterization of peptidomimetics
22	HepG2 IC ₅₀ curves

Estimation of log D values

Table S1. Log D_{\max} values and selected ion recording parameters of compounds.

Compound	log D_{\max}	m/z		
		z = 6	z = 5	z = 4
1	<−2.662	373.3	466.3	621.4
7	<−3.650	402.3	502.6	669.8
9	<−3.627	352.5	422.7	527.2
10	<−2.994	367.1	440.4	550.2
11	<−2.876	361.8	433.9	542.1
12	<−3.147	383.8	460.4	575.2
13	<−3.911	405.8	486.8	608.3
14	<−2.883	434.9	521.7	651.9
15	<−3.180	345.0	413.7	516.9
16	<−3.922	359.5	431.2	538.8

Calculation of log D values

Table S2. Calculated log D values of compounds.

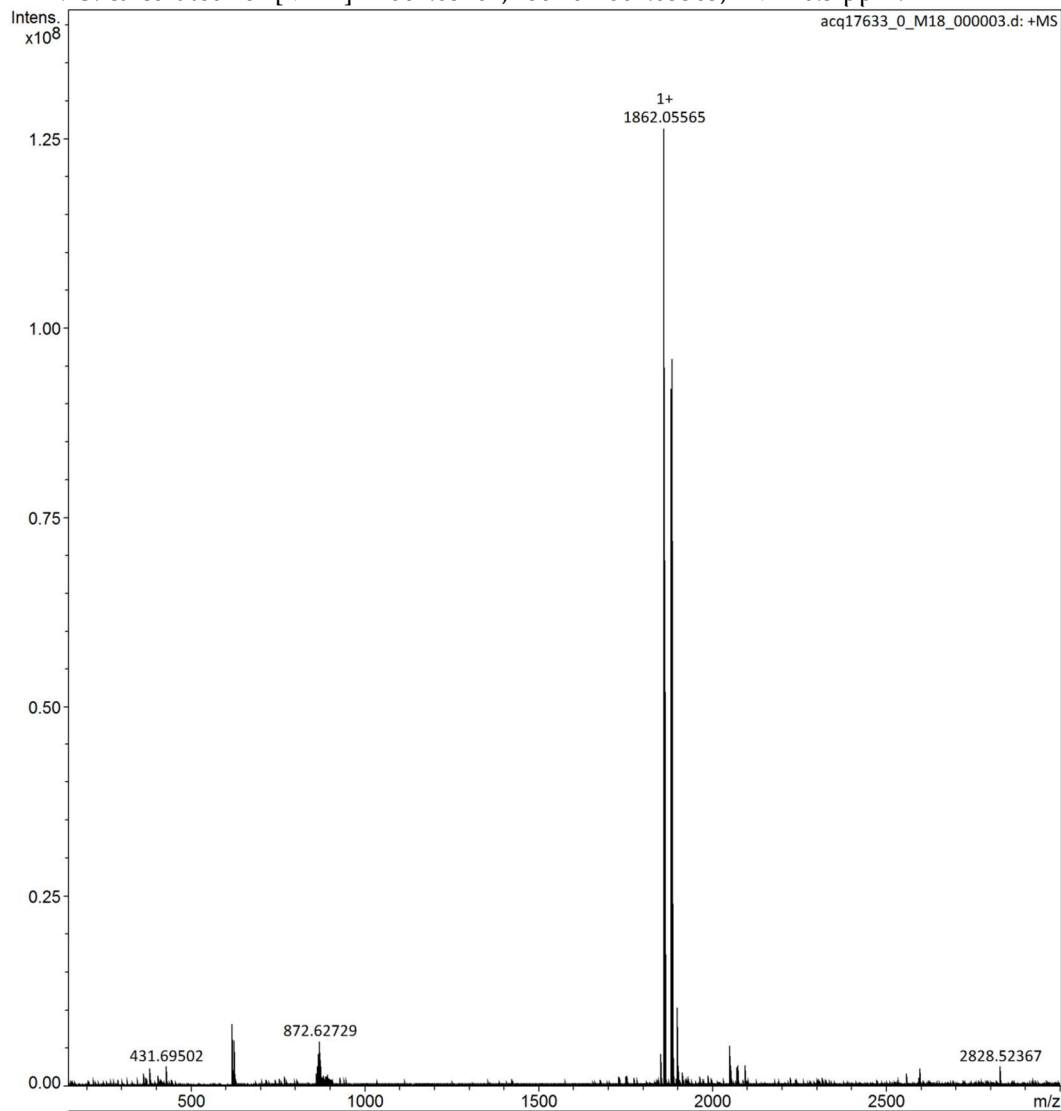
Subgroup	Cmpd	Sequence ¹	%MeCN ²	cLogD _{7.4} ³
I	1	H-[X] ₆ -NH ₂	41.6	-14.22
	2	H-sPEG2-[X] ₆ -NH ₂	41.4	-16.22
	3	H-sPEG4-[X] ₆ -NH ₂	41.9	-16.08
II	4	H-sPEG2-[X] ₆ -sPEG2-NH ₂	41.3	-17.42
	5	H-sPEG4-[X] ₆ -sPEG4-NH ₂	42.2	-17.13
III	6	H-[X] ₃ -sPEG1-[X] ₃ -NH ₂	41.2	-15.37
	7	H-[X] ₃ -sPEG2-[X] ₃ -NH ₂	41.4	-15.41
	8	H-[X] ₃ -sPEG3-[X] ₃ -NH ₂	41.7	-15.46
	9	H-[X] ₃ -sPEG4-[X] ₃ -NH ₂	41.8	-15.27
	10	H-[X] ₃ -sPEG6-[X] ₃ -NH ₂	42.3	-15.37
IV	11	H-sPEG1-[X] ₃ -sPEG1-[X] ₃ -sPEG1-NH ₂	40.8	-18.20
	12	H-sPEG2-[X] ₃ -sPEG2-[X] ₃ -sPEG2-NH ₂	41.3	-18.62
	13	H-sPEG3-[X] ₃ -sPEG3-[X] ₃ -sPEG3-NH ₂	41.9	-18.76
	14	H-sPEG4-[X] ₃ -sPEG4-[X] ₃ -sPEG4-NH ₂	42.4	-18.19
V	15	H-[X] ₂ -sPEG1-[X] ₂ -sPEG1-[X] ₂ -NH ₂	41.1	-16.52
	16	H-[X] ₂ -sPEG2-[X] ₂ -sPEG2-[X] ₂ -NH ₂	41.5	-16.61
	17	H-[X] ₂ -sPEG3-[X] ₂ -sPEG3-[X] ₂ -NH ₂	41.8	-16.71
	18	H-[X] ₂ -sPEG4-[X] ₂ -sPEG4-[X] ₂ -NH ₂	42.1	-16.33

¹ X = Lys-βNPhe(4-F). ² Experimental relative hydrophobicity measured as % MeCN at peak elution. RP-HPLC gradient: 0 → 60% B during 15 min. For column specifications, see **Error! Reference source not found.** ³ cLogD_{7.4} = calculated distribution coefficient at pH 7.4.

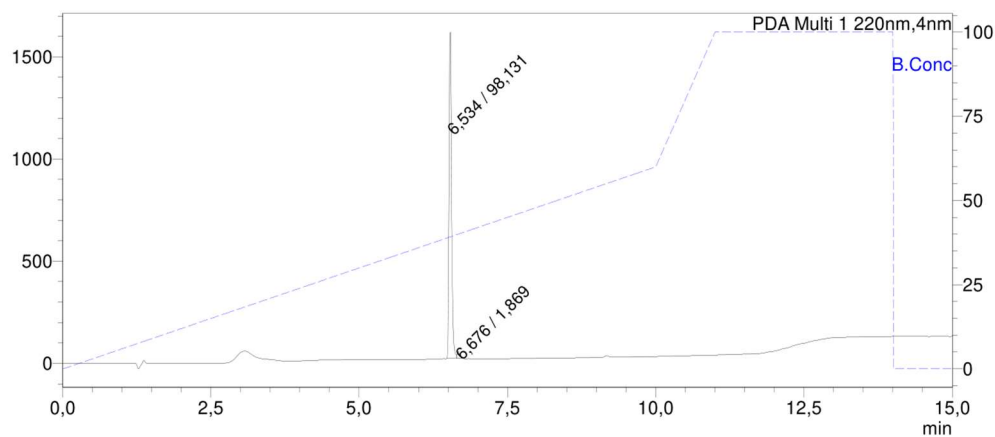
Characterization of peptidomimetics

Compound 1

HRMS: calculated for $[M+H]^+$ 1862.05481, found 1862.05565; $\Delta M = 0.5$ ppm.

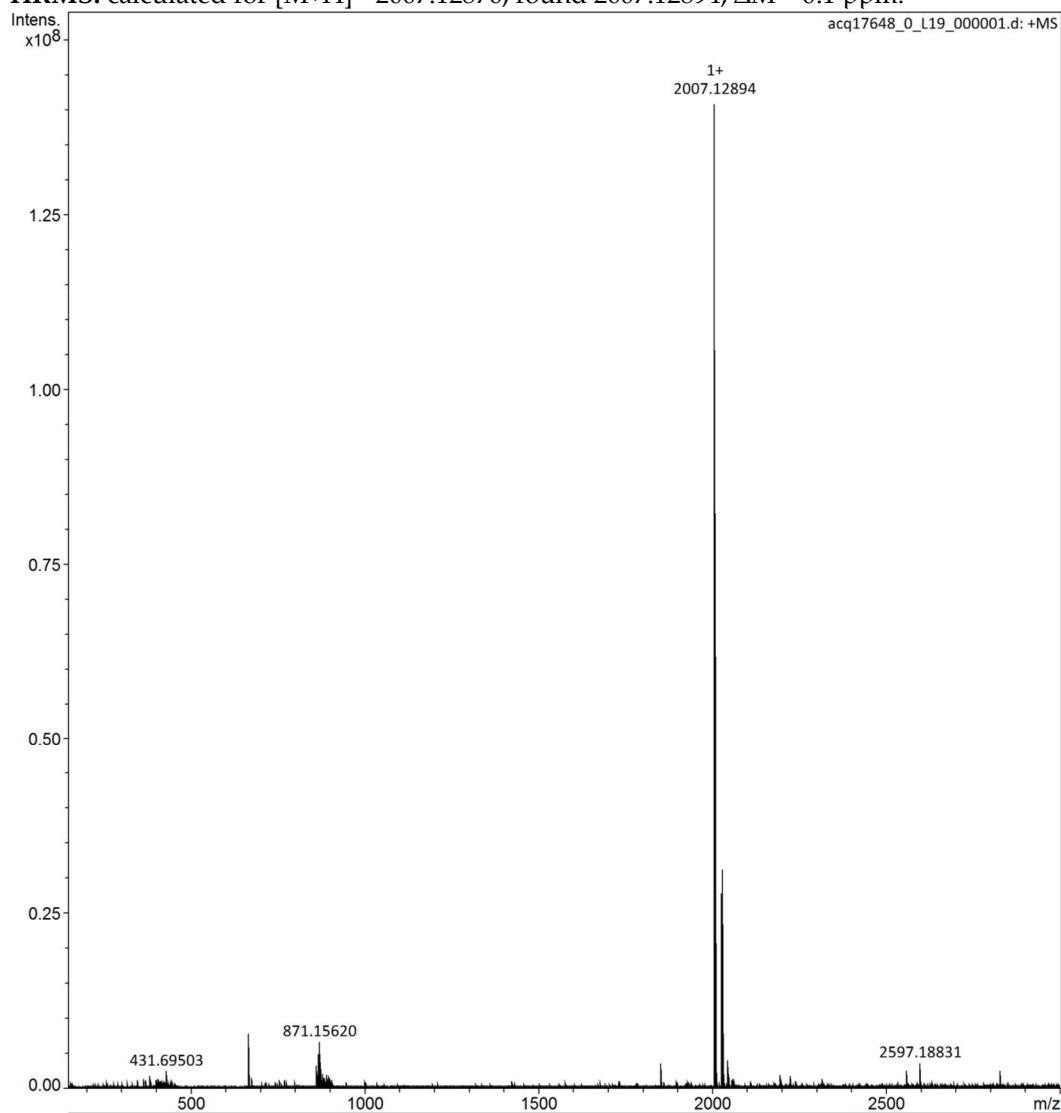


HPLC: Charge: +7. $t_R = 6.534$ min, purity 98.131%. Gradient: 0-60% B during 10 min. B = 95% MeCN + 0.1% TFA.

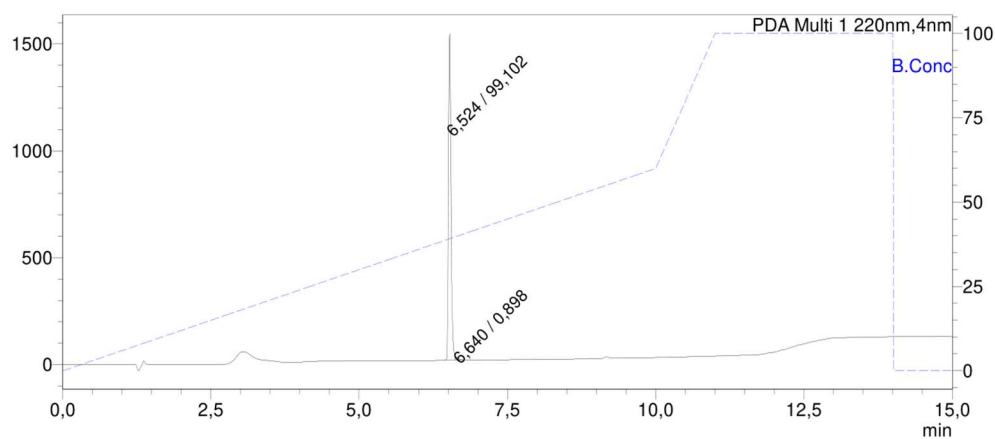


Compound 2

HRMS: calculated for $[M+H]^+$ 2007.12870, found 2007.12894; $\Delta M = 0.1$ ppm.

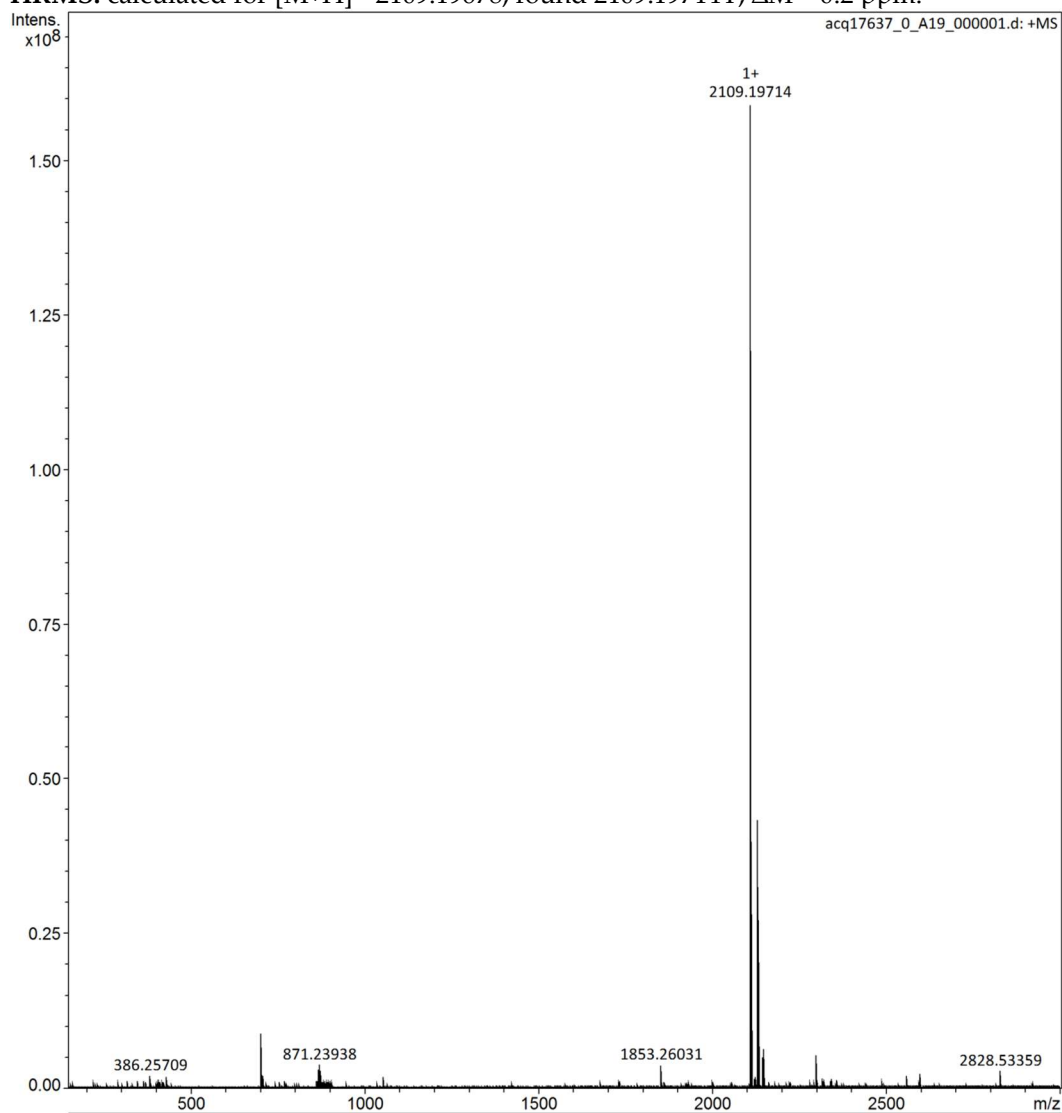


HPLC: Charge: +7. $t_R = 6.524$ min, purity 99.102%. Gradient: 0–60% B during 10 min. B = 95% MeCN + 0.1% TFA.

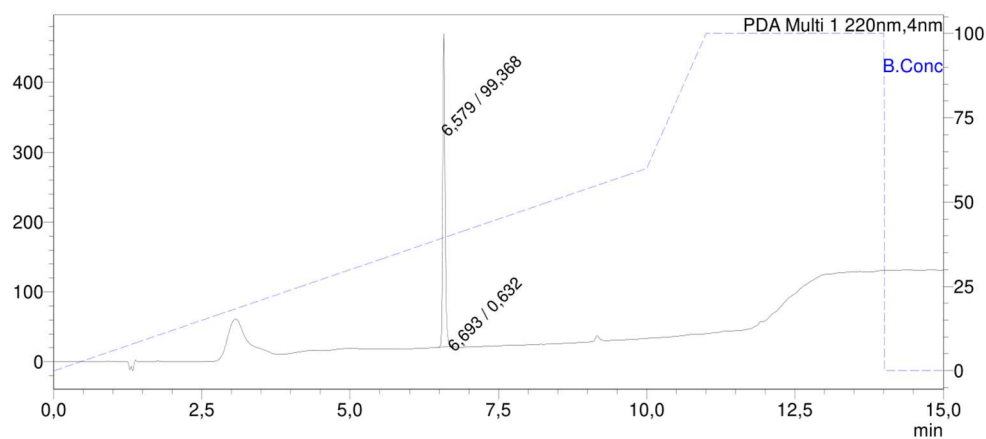


Compound 3

HRMS: calculated for $[M+H]^+$ 2109.19678, found 2109.19714Y; $\Delta M = 0.2$ ppm.

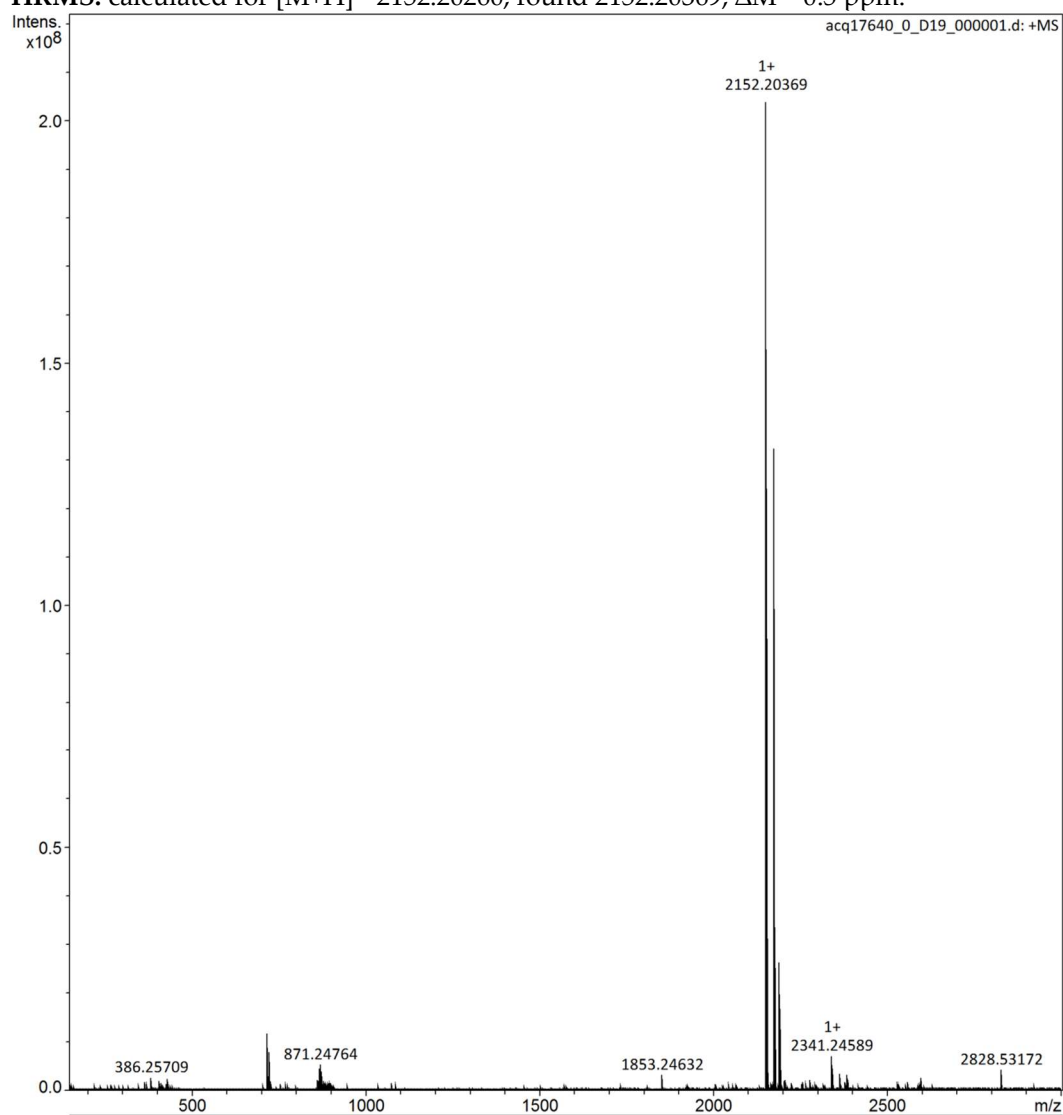


HPLC: Charge: +7. $t_R = 6.579$ min, purity 99.368%. Gradient: 0–60% B during 10 min. B = 95% MeCN + 0.1% TFA.

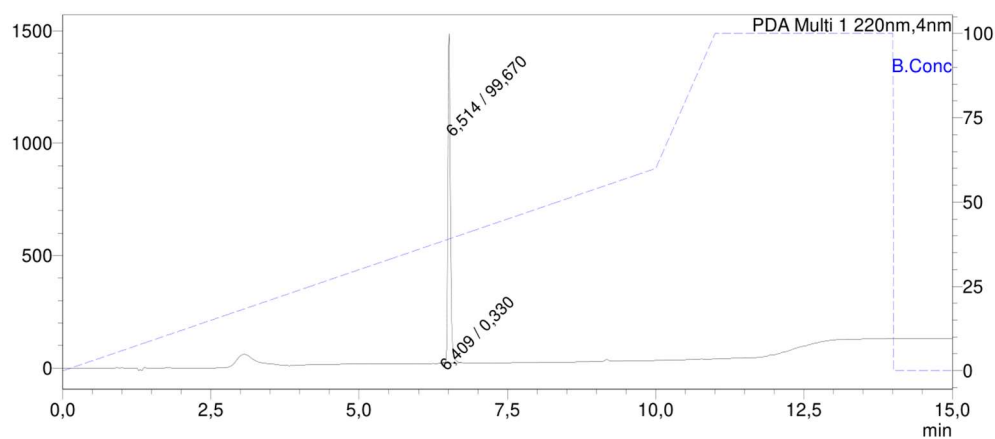


Compound 4

HRMS: calculated for $[M+H]^+$ 2152.20260, found 2152.20369; $\Delta M = 0.5$ ppm.

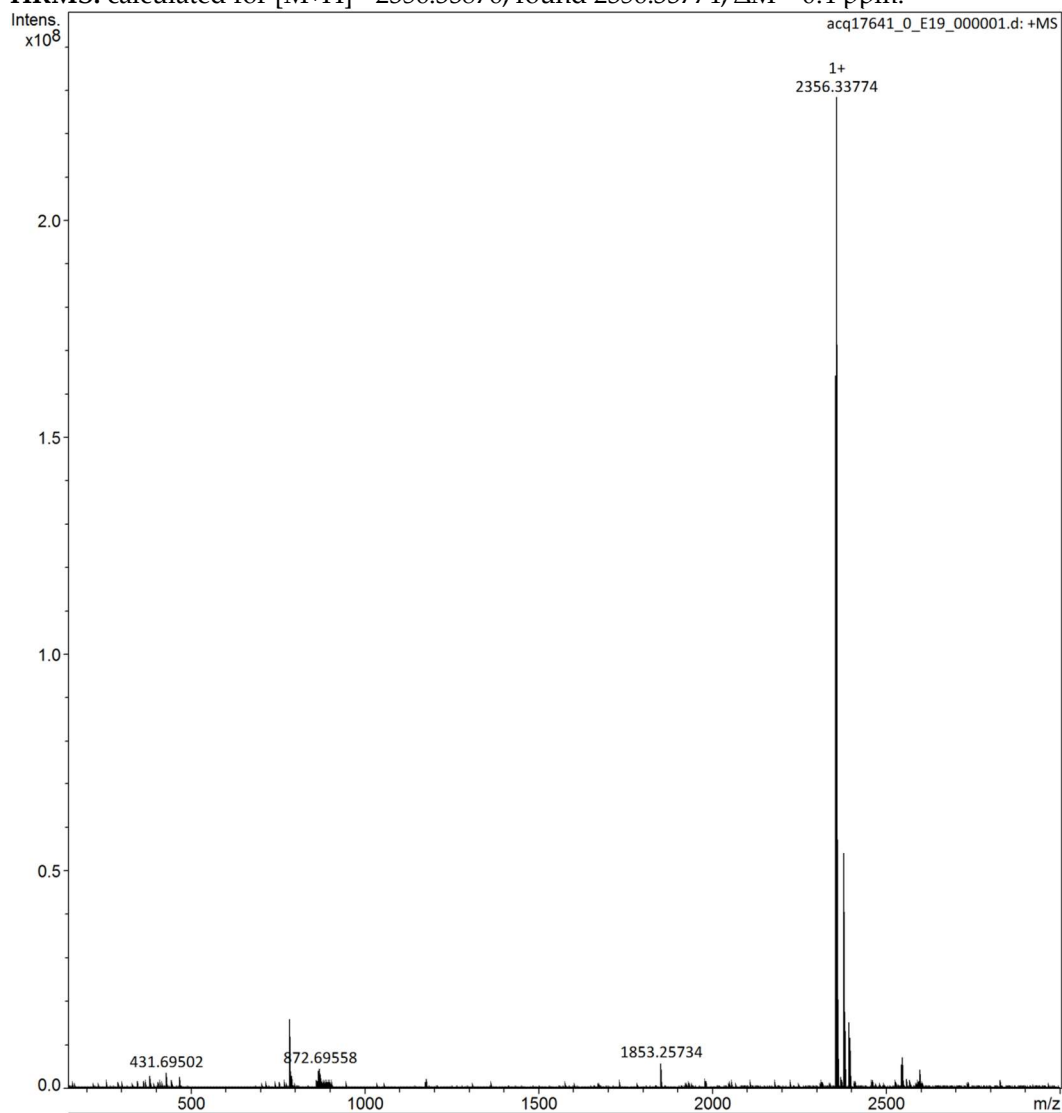


HPLC: Charge: +7. $t_R = 6.514$ min, purity 99.670%. Gradient: 0-60% B during 10 min. B = 95% MeCN + 0.1% TFA.

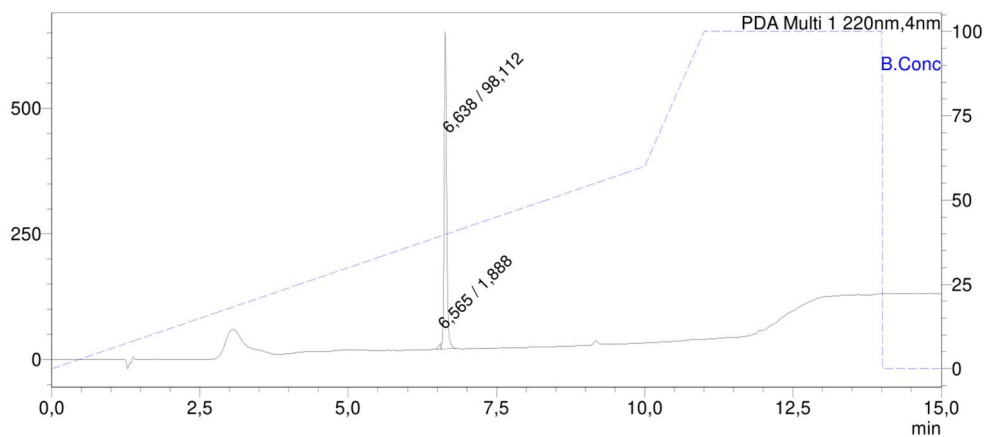


Compound 5

HRMS: calculated for $[M+H]^+$ 2356.33876, found 2356.33774; $\Delta M = 0.4$ ppm.

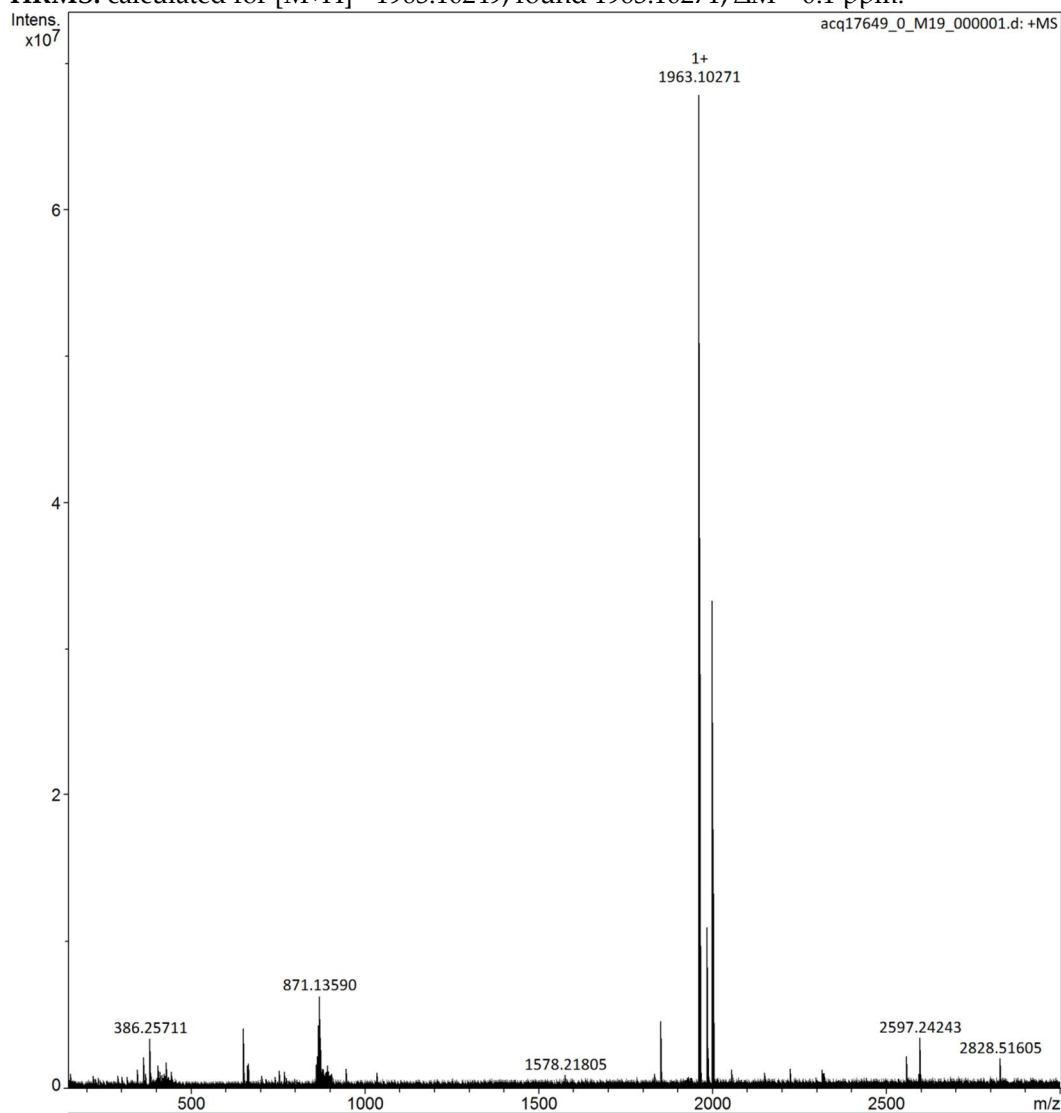


HPLC: Charge: +7. $t_R = 6.638$ min, purity 98.112%. Gradient: 0-60% B during 10 min. B = 95% MeCN + 0.1% TFA.

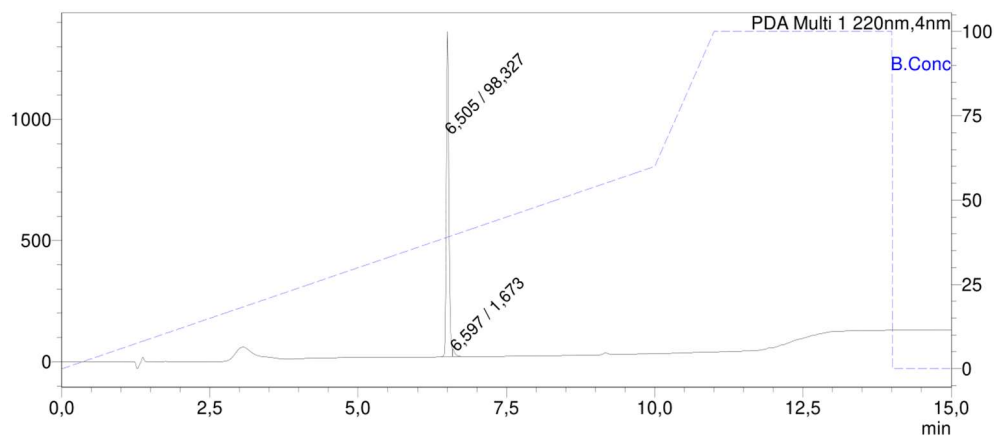


Compound 6

HRMS: calculated for $[M+H]^+$ 1963.10249, found 1963.10271; $\Delta M = 0.1$ ppm.

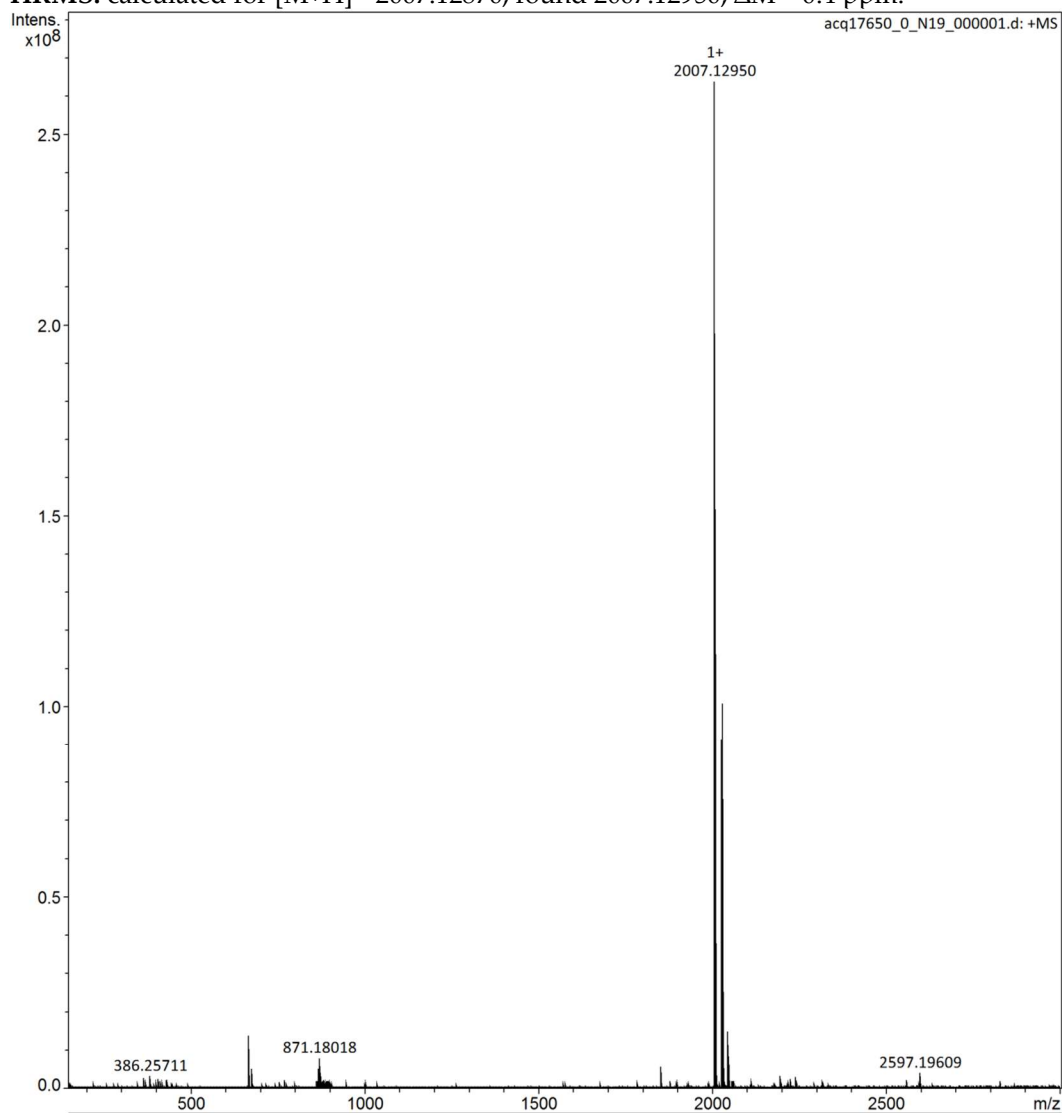


HPLC: Charge: +7. $t_R = 6.505$ min, purity 98.327%. Gradient: 0–60% B during 10 min. B = 95% MeCN + 0.1% TFA.

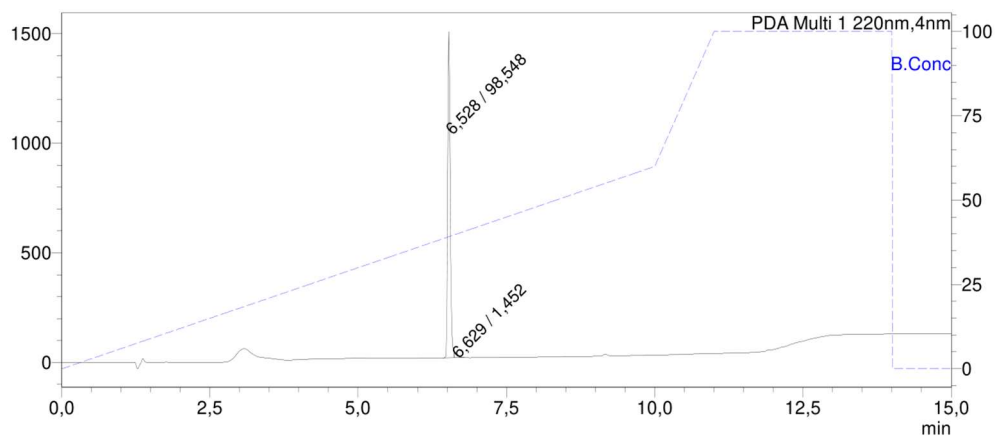


Compound 7

HRMS: calculated for $[M+H]^+$ 2007.12870, found 2007.12950; $\Delta M = 0.4$ ppm.

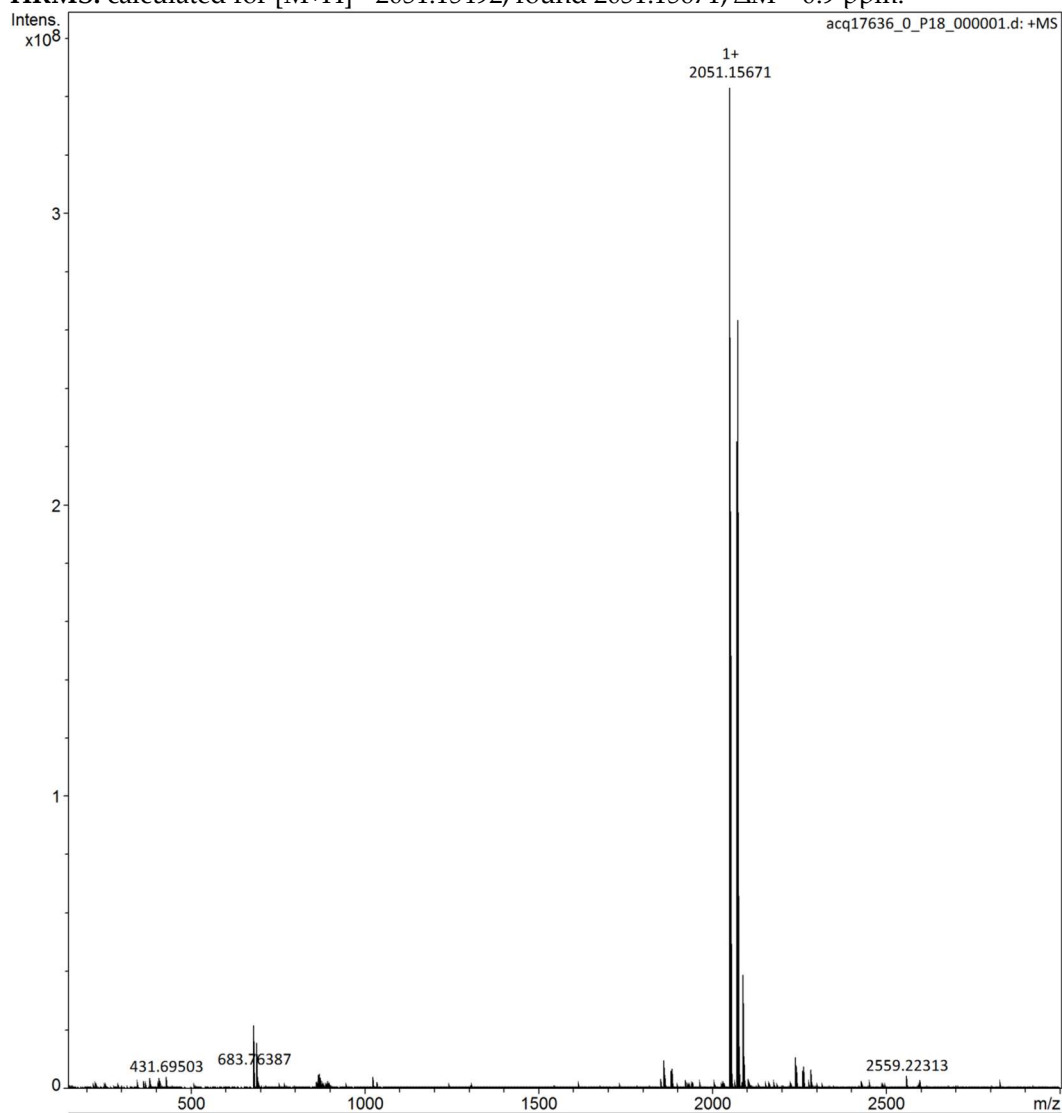


HPLC: Charge: +7. $t_R = 6.528$ min, purity 98.548%. Gradient: 0–60% B during 10 min. B = 95% MeCN + 0.1% TFA.

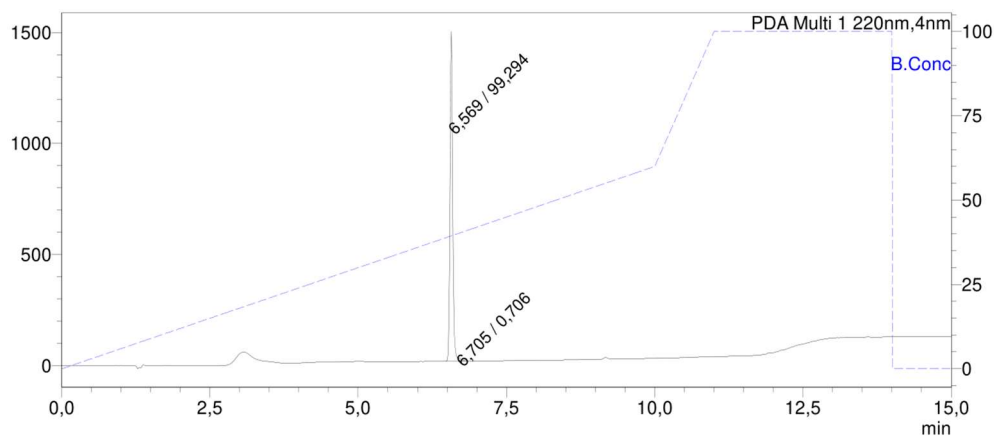


Compound 8

HRMS: calculated for $[M+H]^+$ 2051.15492, found 2051.15671; $\Delta M = 0.9$ ppm.

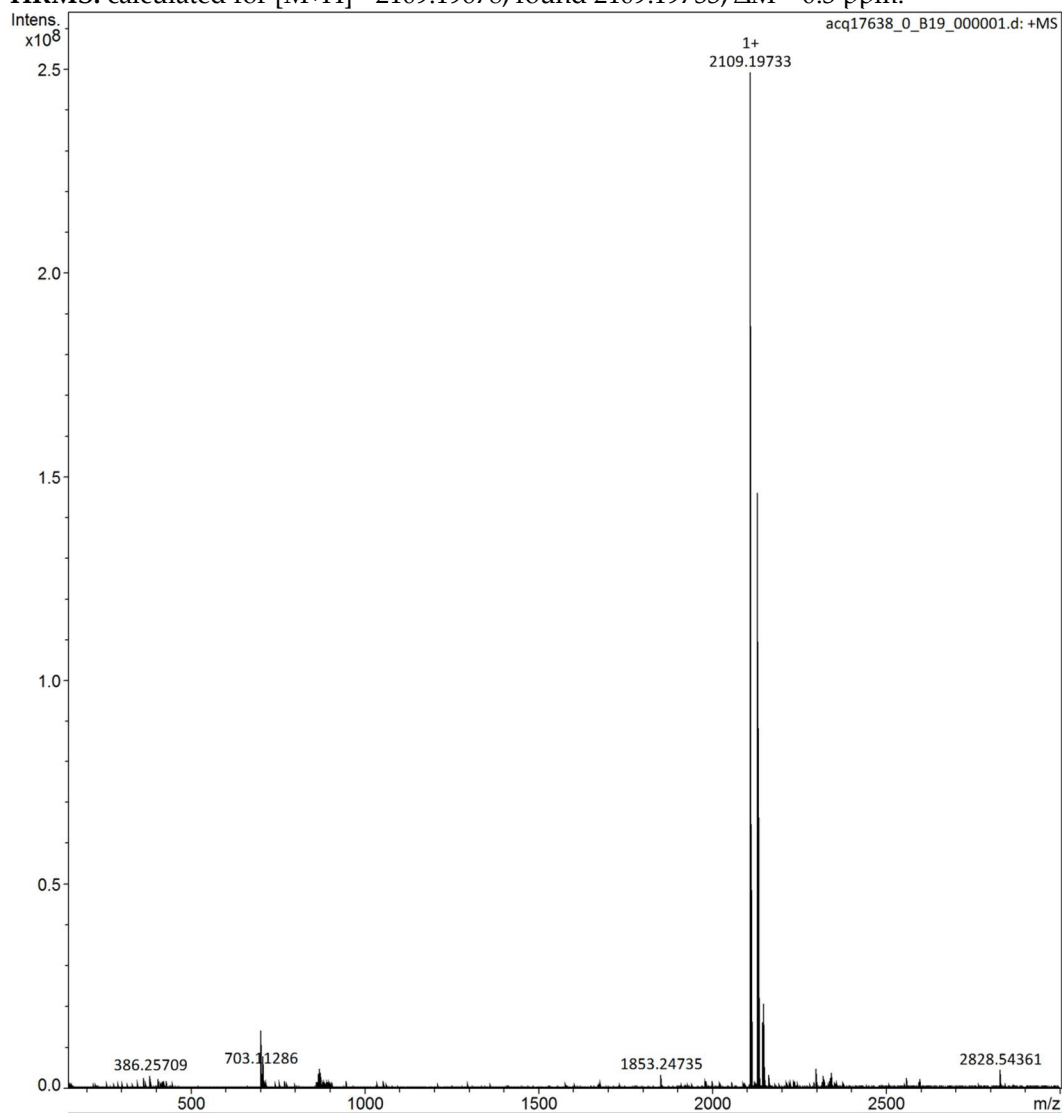


HPLC: Charge: +7. $t_R = 6.569$ min, purity 99.294%. Gradient: 0-60% B during 10 min. B = 95% MeCN + 0.1% TFA.

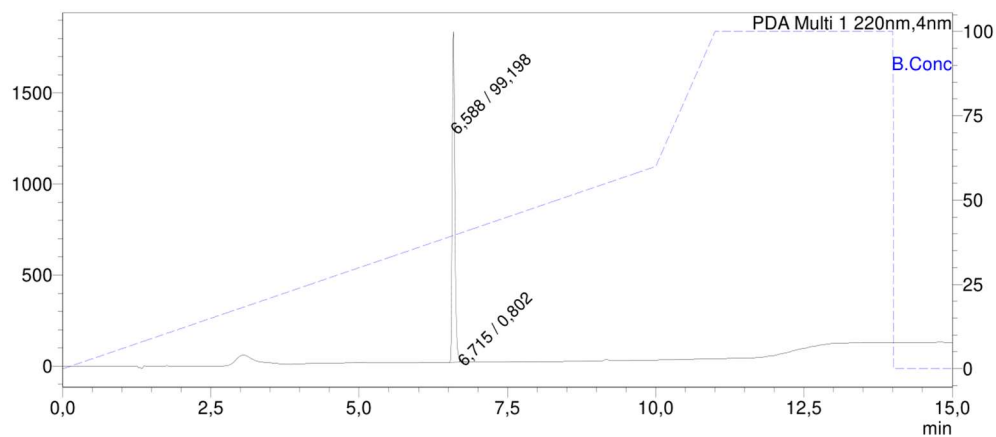


Compound 9

HRMS: calculated for $[M+H]^+$ 2109.19678, found 2109.19733; $\Delta M = 0.3$ ppm.

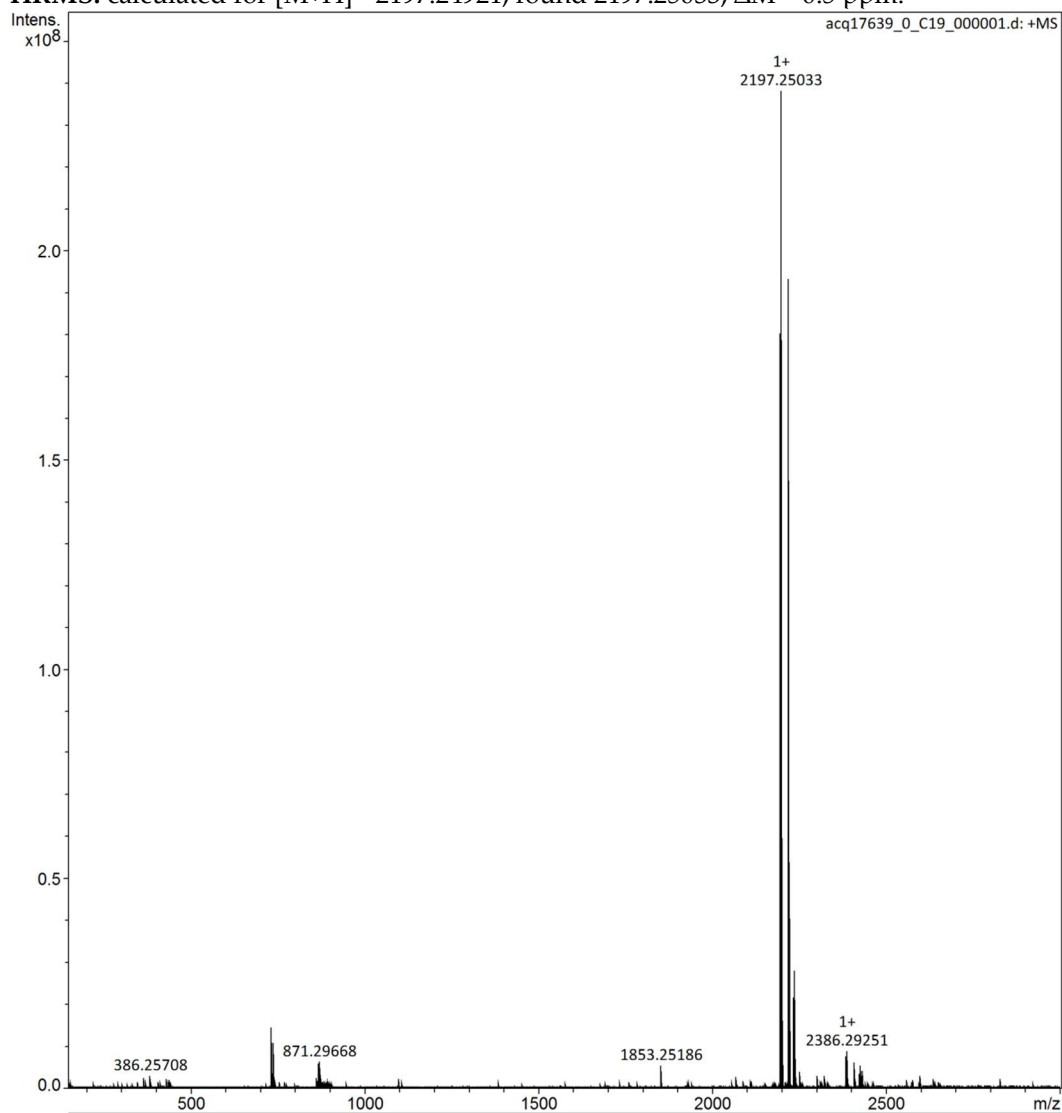


HPLC: Charge: +7. $t_R = 6.588$ min, purity 99.198%. Gradient: 0–60% B during 10 min. B = 95% MeCN + 0.1% TFA.

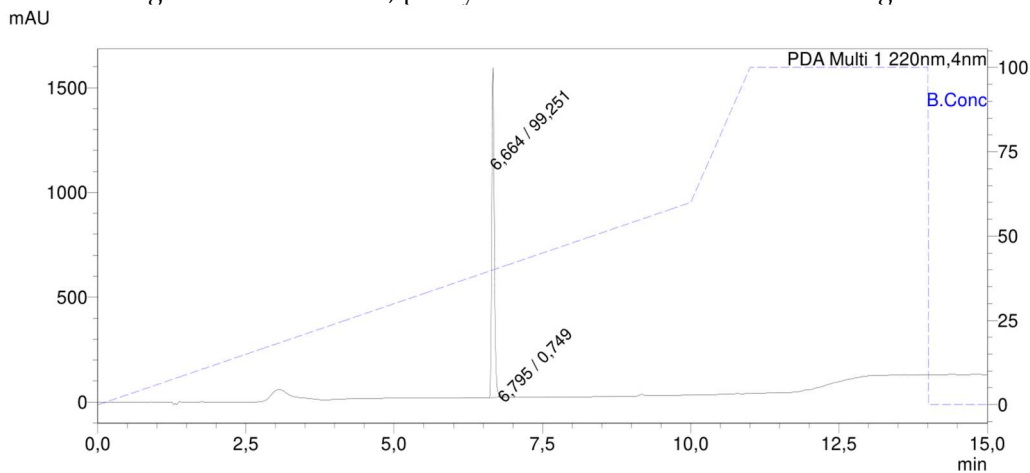


Compound 10

HRMS: calculated for $[M+H]^+$ 2197.24921, found 2197.25033; $\Delta M = 0.5$ ppm.

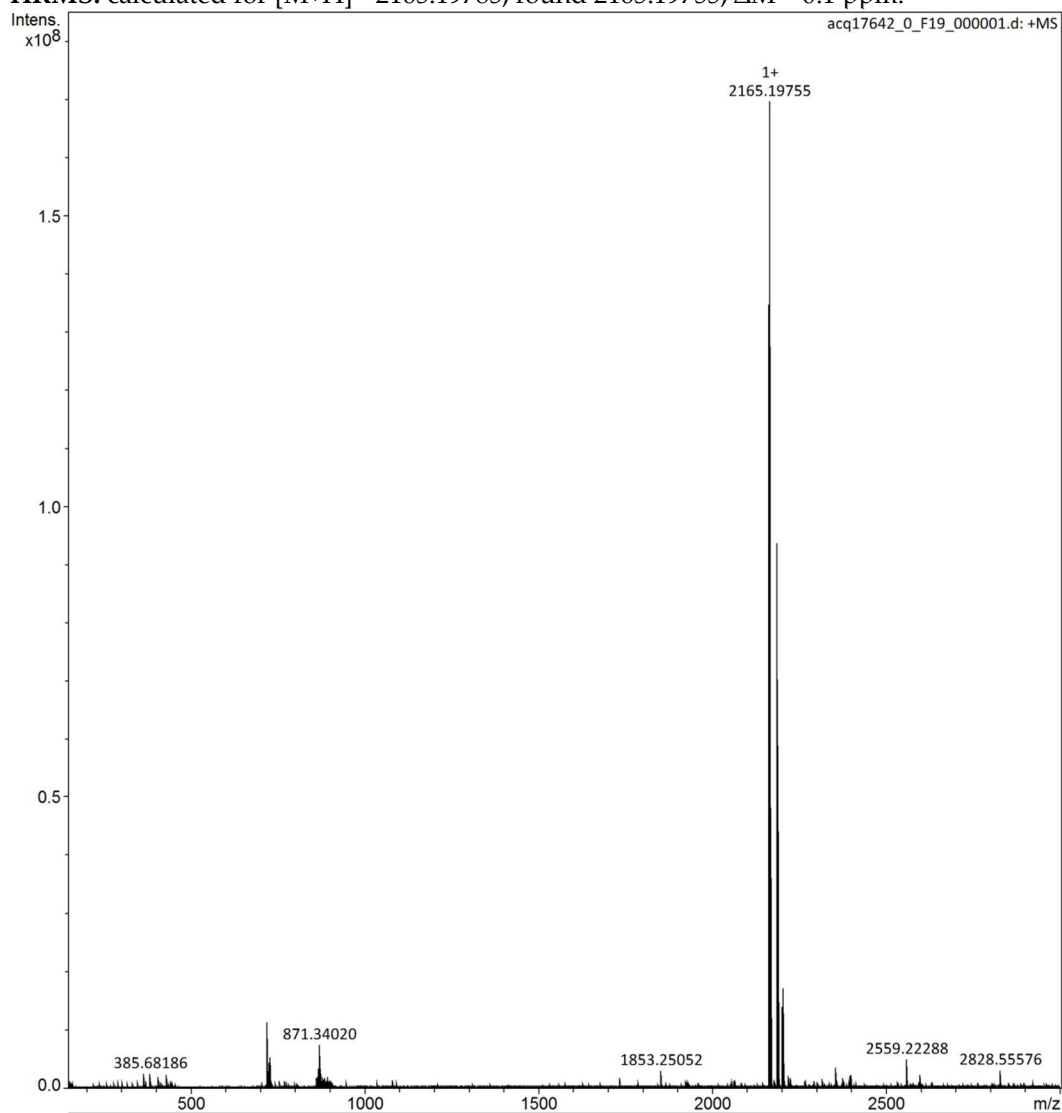


HPLC: Charge: +7. $t_R = 6.664$ min, purity 99.251%. Gradient: 0–60% B during 10 min. B = 95% MeCN + 0.1% TFA.

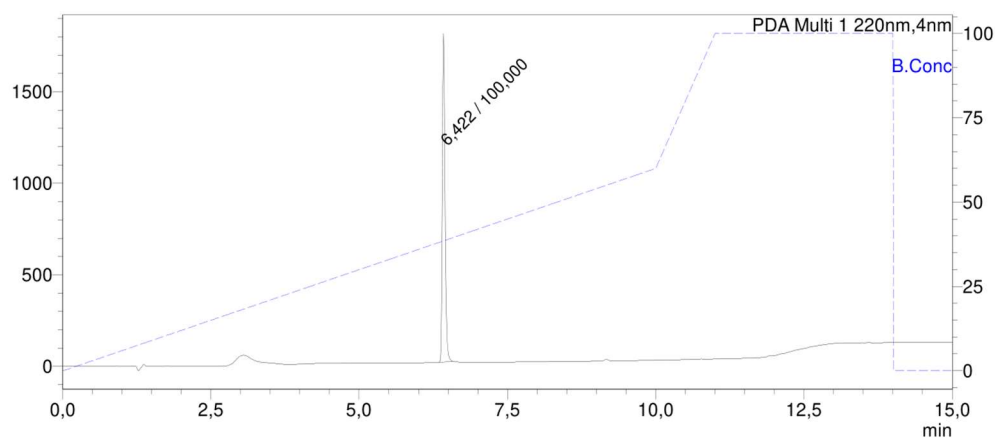


Compound 11

HRMS: calculated for $[M+H]^+$ 2165.19785, found 2165.19755; $\Delta M = 0.1$ ppm.

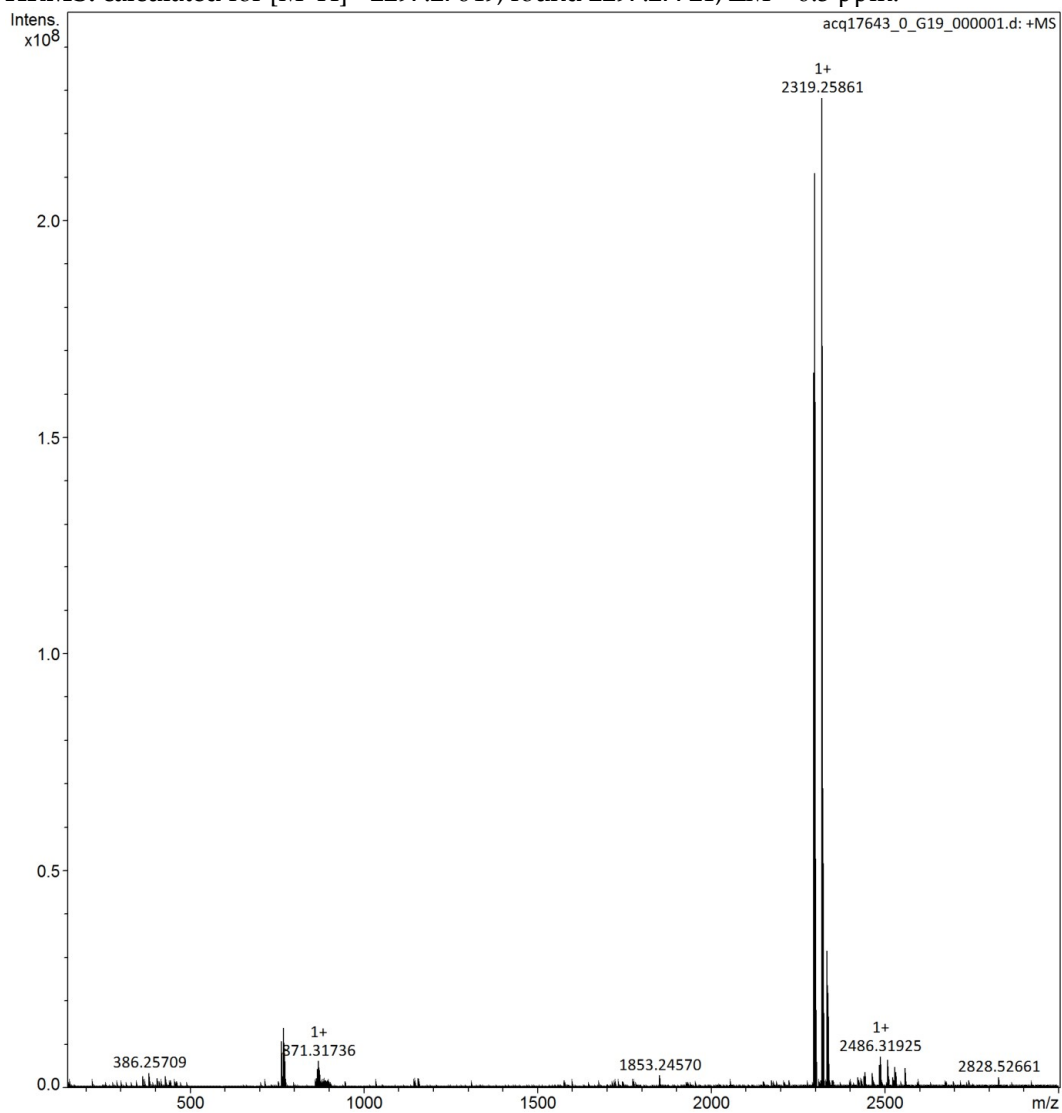


HPLC: Charge: +7. $t_R = 6.422$ min, purity 100.000%. Gradient: 0-60% B during 10 min. B = 95% MeCN + 0.1% TFA.

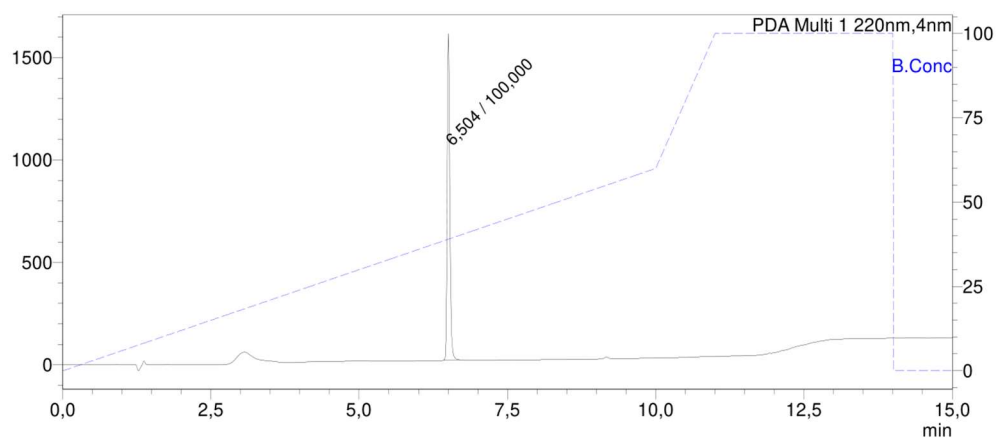


Compound 12

HRMS: calculated for $[M+H]^+$ 2297.27649, found 2297.27721; $\Delta M = 0.3$ ppm.

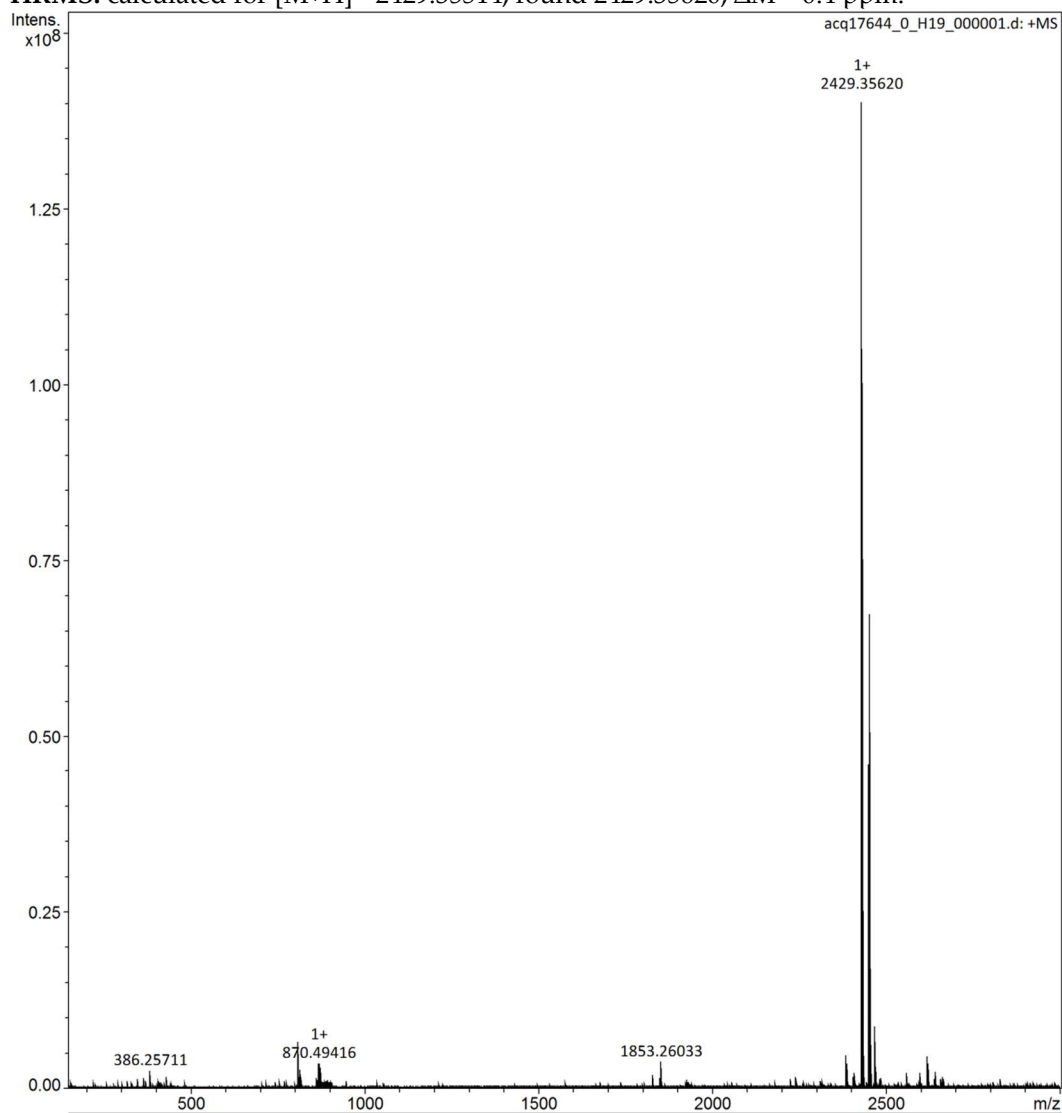


HPLC: Charge: +7. $t_R = 6.504$ min, purity 100.000%. Gradient: 0-60% B during 10 min. B = 95% MeCN + 0.1% TFA.

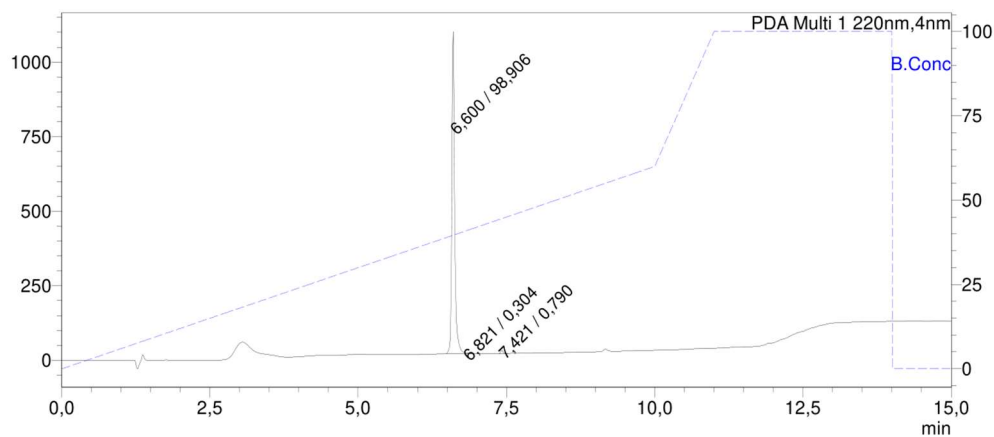


Compound 13

HRMS: calculated for $[M+H]^+$ 2429.35514, found 2429.35620; $\Delta M = 0.4$ ppm.

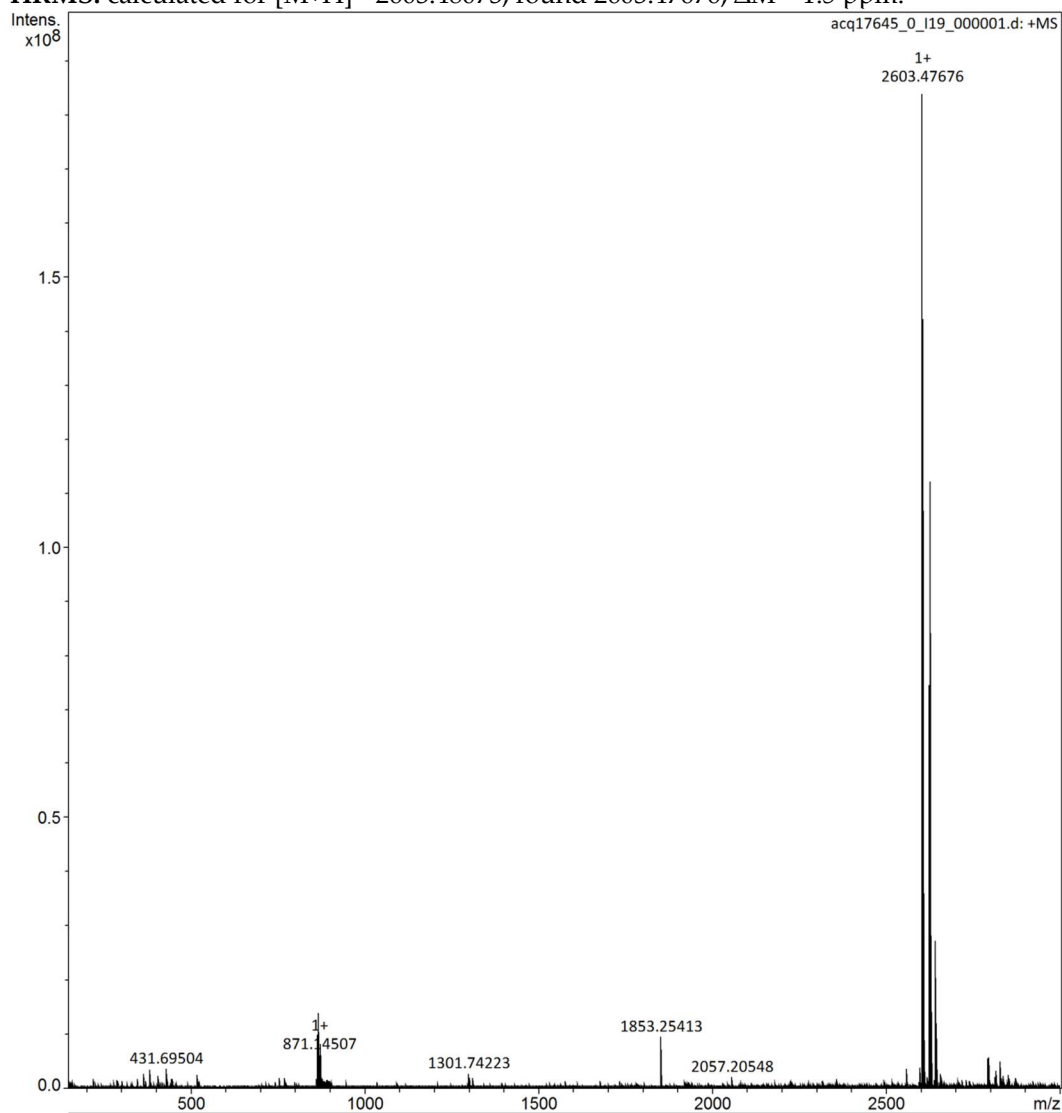


HPLC: Charge: +7. $t_R = 6.600$ min, purity 98.906%. Gradient: 0-60% B during 10 min. B = 95% MeCN + 0.1% TFA.



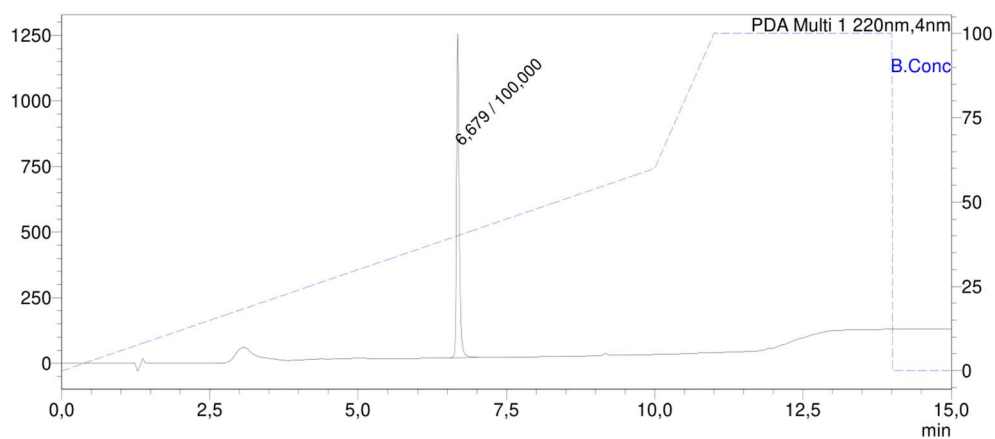
Compound 14

HRMS: calculated for $[M+H]^+$ 2603.48073, found 2603.47676; $\Delta M = 1.5$ ppm.



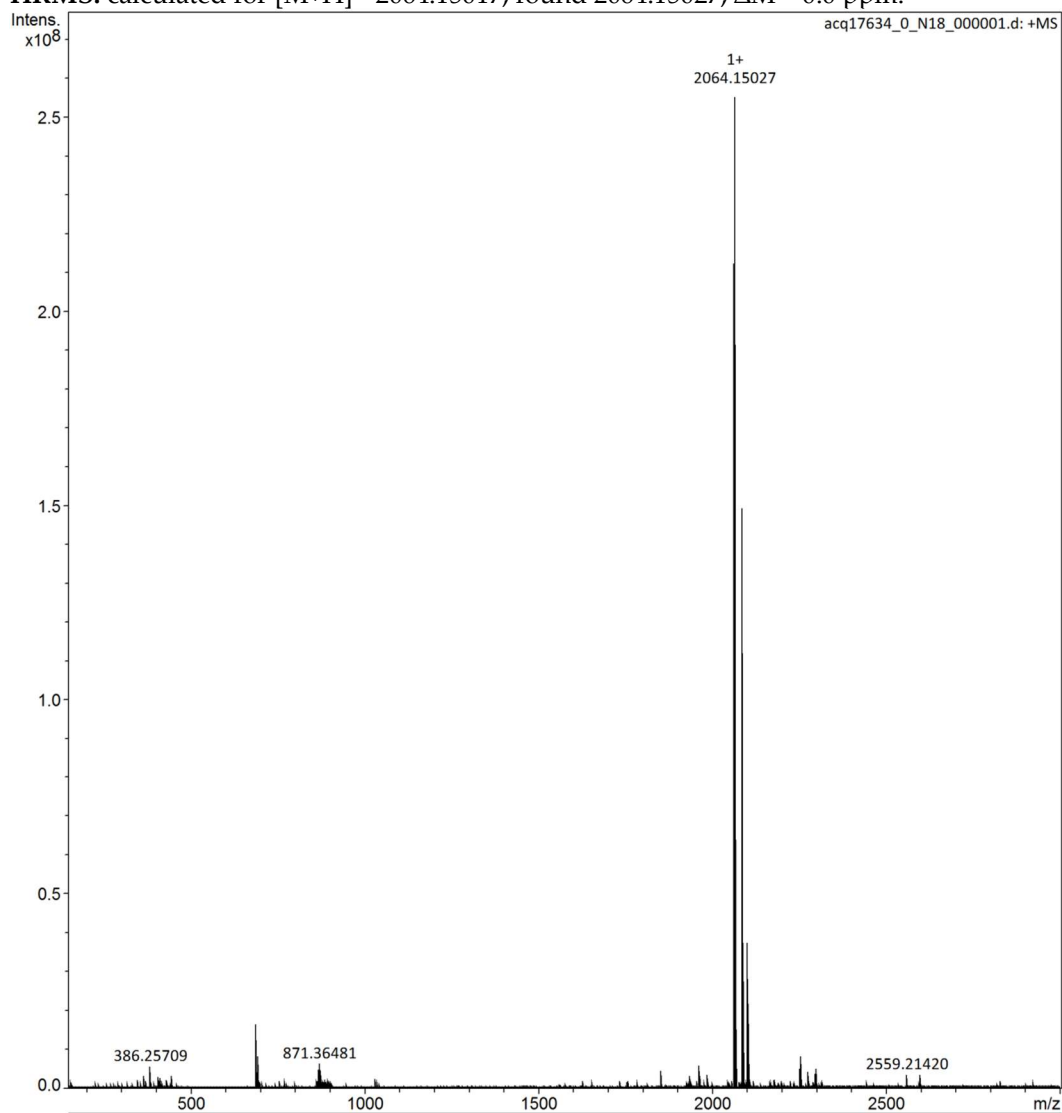
HPLC: Charge: +7. $t_R = 6.679$ min, purity 100.000%. Gradient: 0-60% B during 10 min. B = 95% MeCN + 0.1% TFA.

mAU

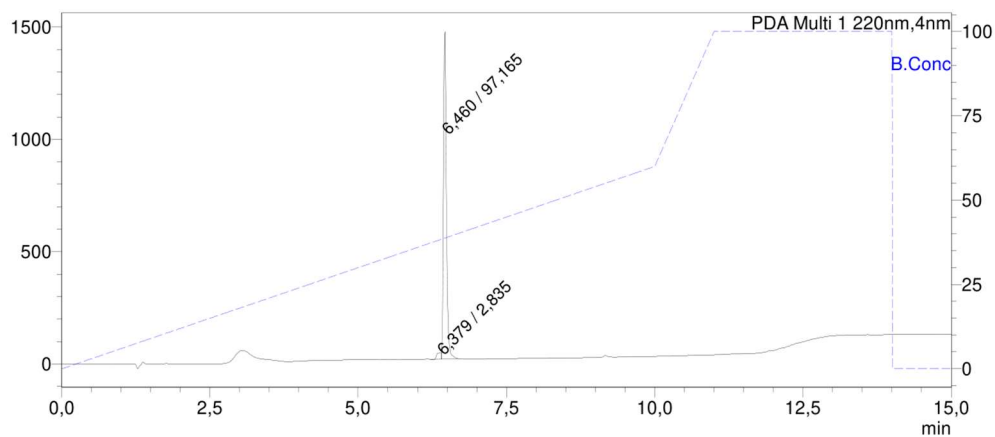


Compound 15

HRMS: calculated for $[M+H]^+$ 2064.15017, found 2064.15027; $\Delta M = 0.0$ ppm.

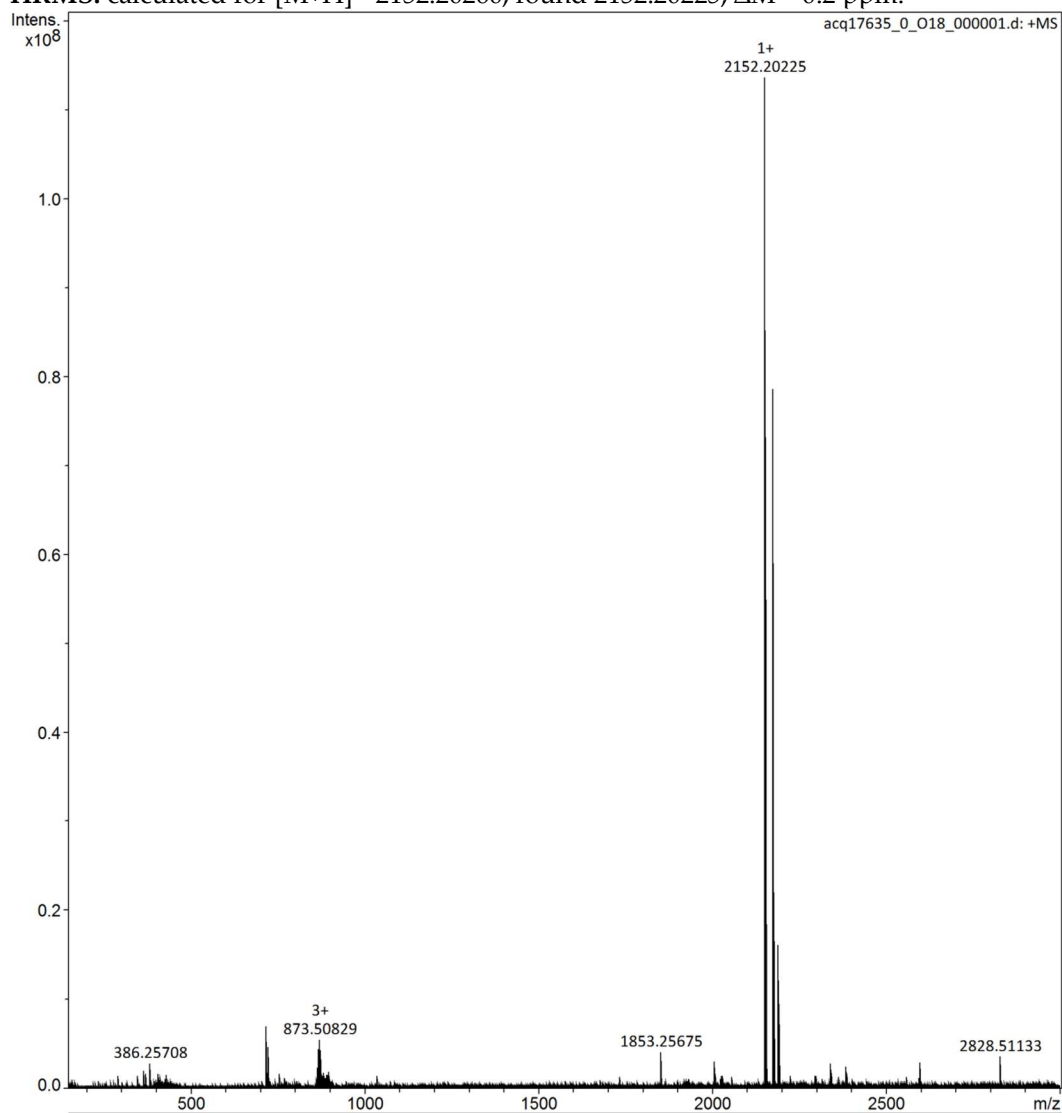


HPLC: Charge: +7. $t_R = 6.460$ min, purity 97.165%. Gradient: 0–60% B during 10 min. B = 95% MeCN + 0.1% TFA.

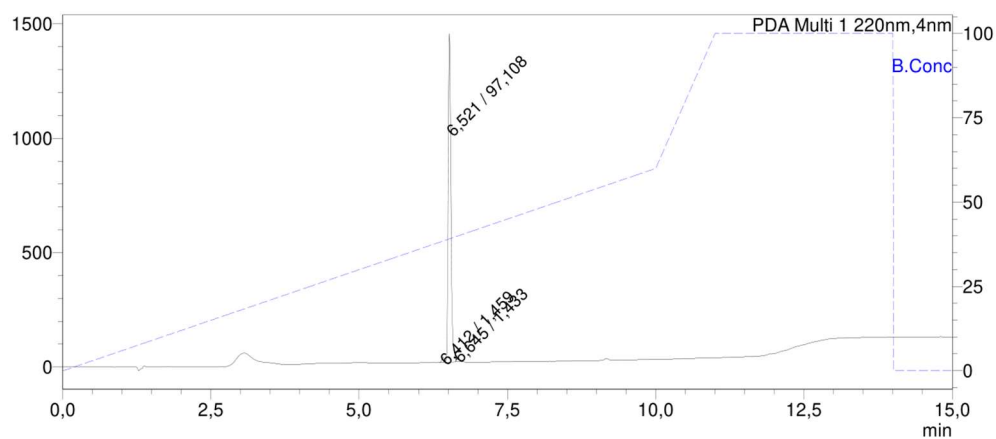


Compound 16

HRMS: calculated for $[M+H]^+$ 2152.20260, found 2152.20225; $\Delta M = 0.2$ ppm.

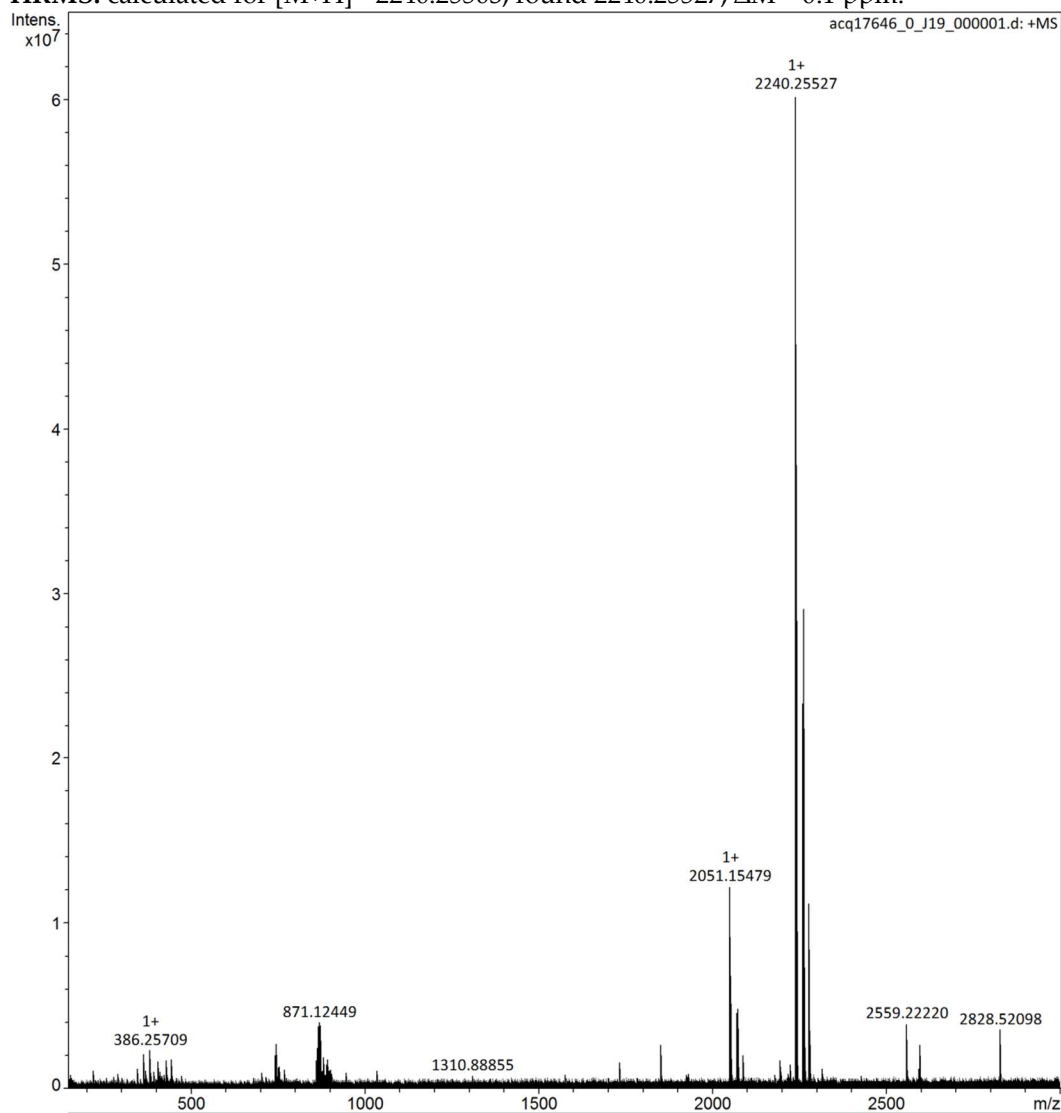


HPLC: Charge: +7. $t_R = 6.521$ min, purity 97.108%. Gradient: 0–60% B during 10 min. B = 95% MeCN + 0.1% TFA.

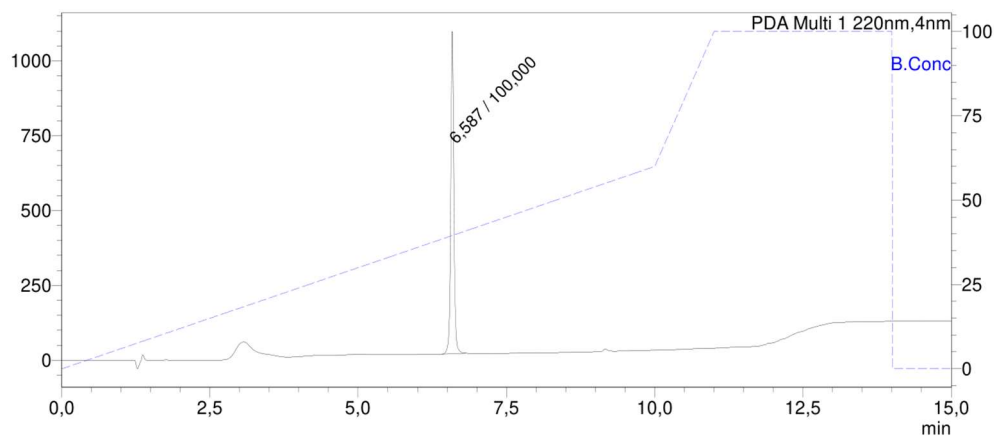


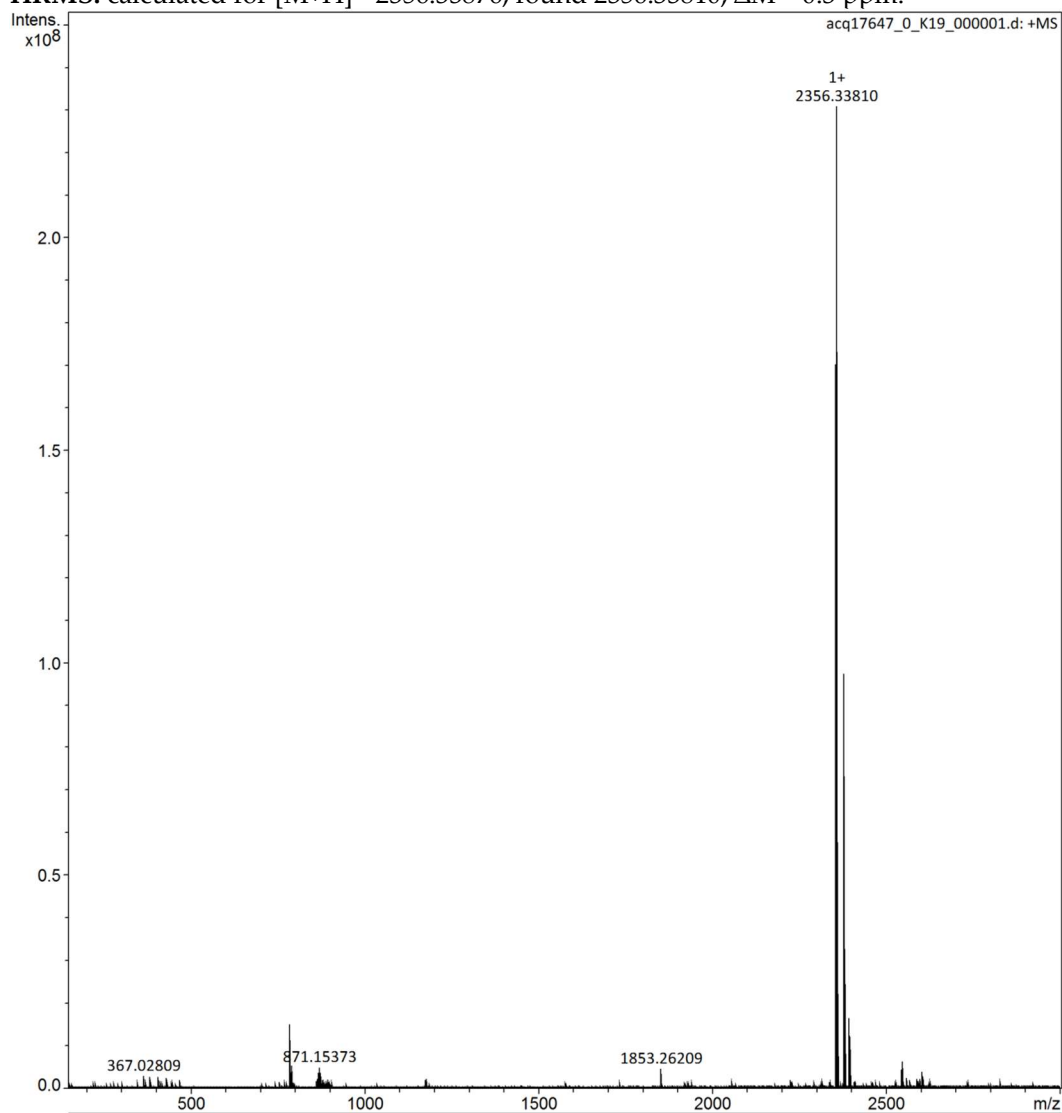
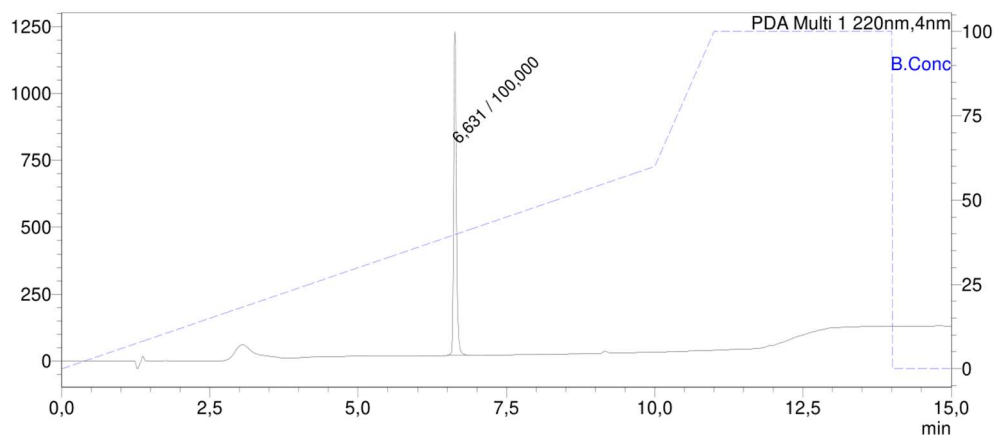
Compound 17

HRMS: calculated for $[M+H]^+$ 2240.25503, found 2240.25527; $\Delta M = 0.1$ ppm.



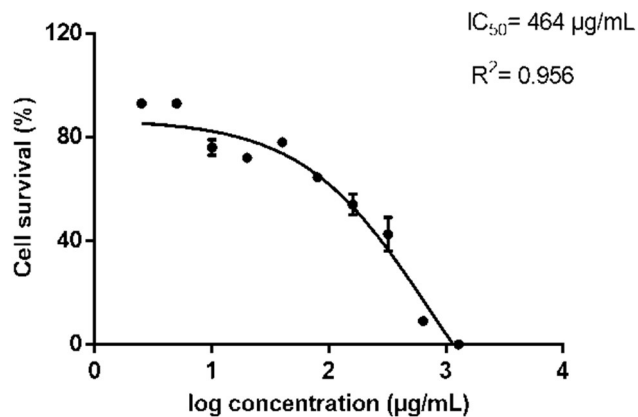
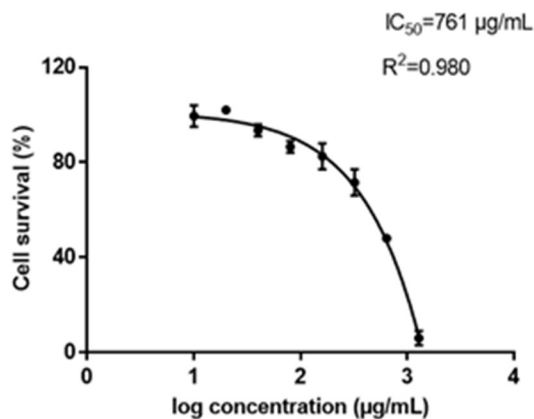
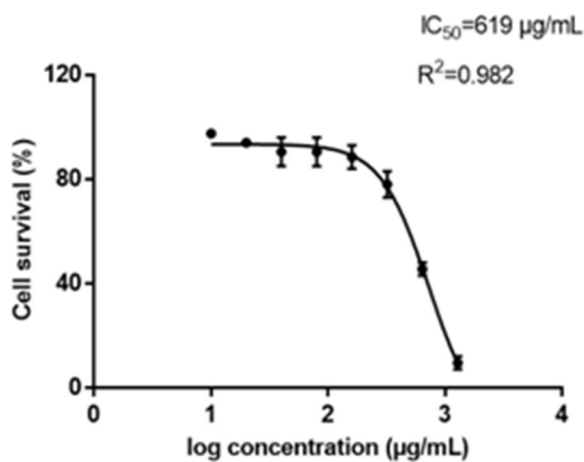
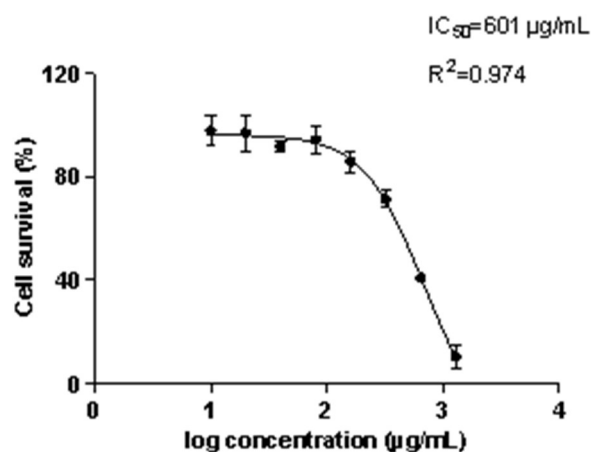
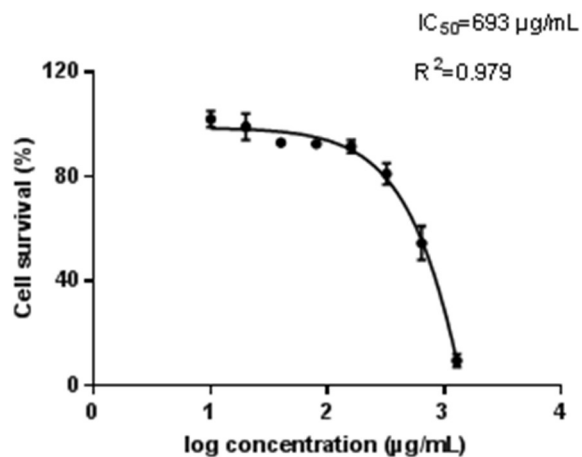
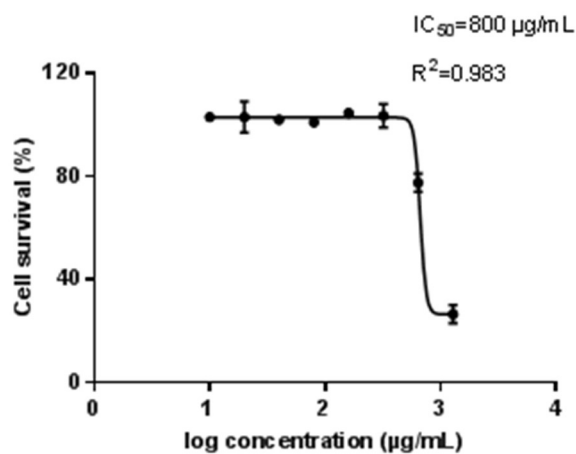
HPLC: Charge: +7. $t_R = 6.587$ min, purity 100.000%. Gradient: 0–60% B during 10 min. B = 95% MeCN + 0.1% TFA.



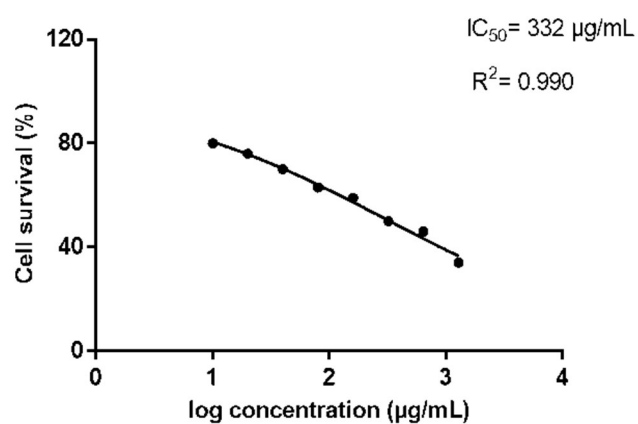
Compound 18**HRMS:** calculated for $[M+H]^+$ 2356.33876, found 2356.33810; $\Delta M = 0.3$ ppm.**HPLC:** Charge: +7. $t_R = 6.631$ min, purity 100.000%. Gradient: 0-60% B during 10 min. B = 95% MeCN + 0.1% TFA.

HepG2 IC₅₀ curves

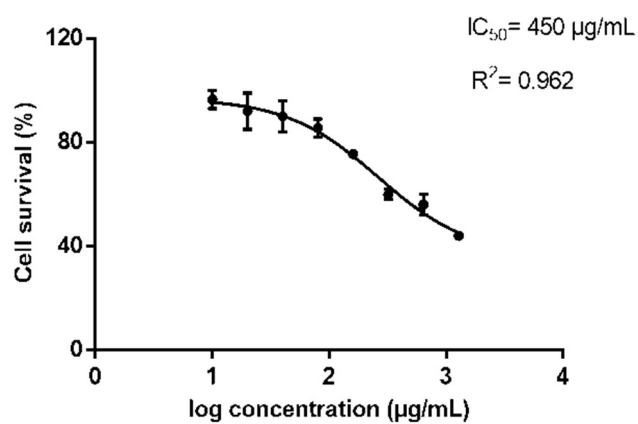
Curves only drawn for compounds displaying IC₅₀ < 1280 µg/mL, i.e., 1, 6-10, 12, 14-16.

Compound 1**Compound 6****Compound 7****Compound 8****Compound 9****Compound 10**

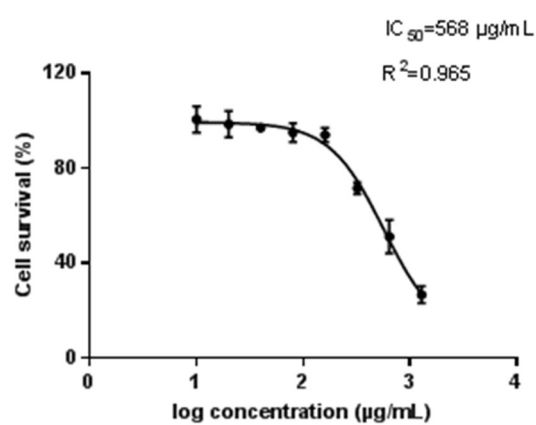
Compound 12



Compound 14



Compound 15



Compound 16

