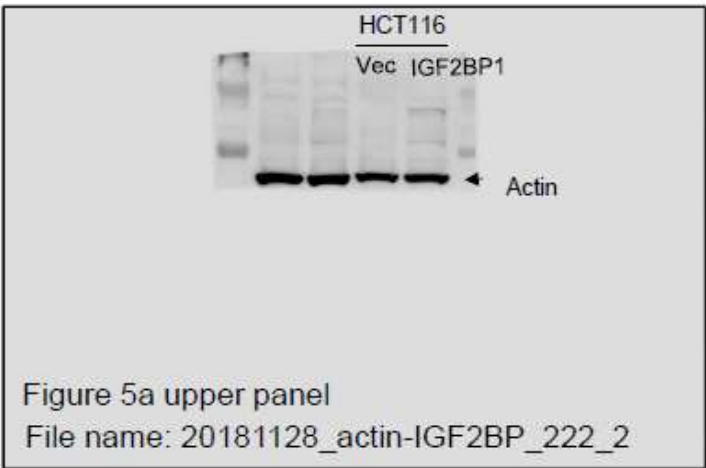
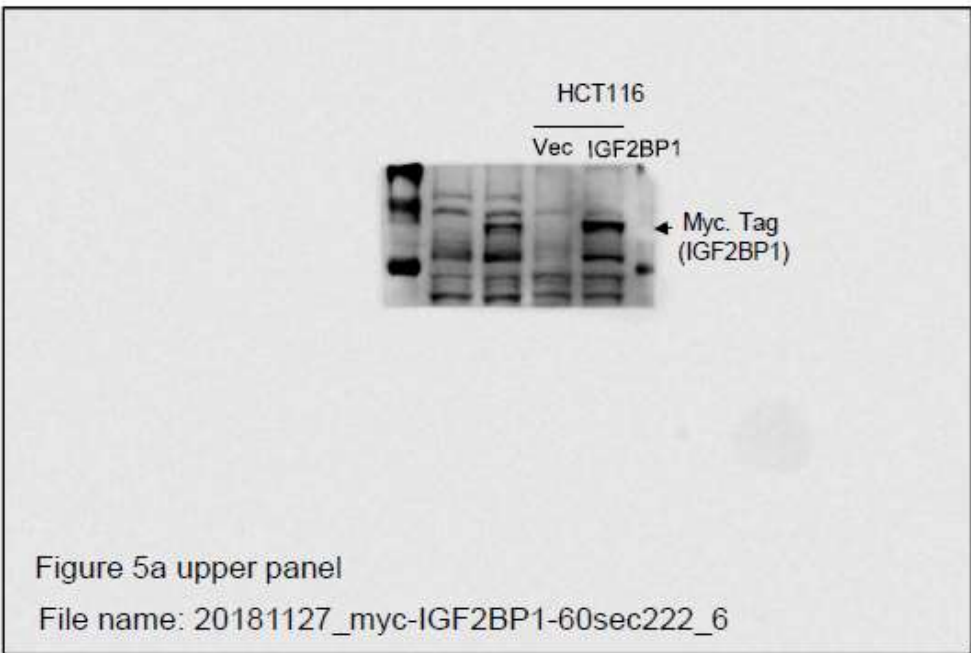


Supplementary figure 1: Examining roles of IGF2BP1 on the classification of responders and non-responders to chemotherapy in CRC patients. (A) The receiver operating characteristic (ROC) plot showed the sensitivity and specificity of IGF2BP1 expression (left panel: probe identify: 223689_at*; right panel: probe 241574_s_at*) for classifying chemotherapy responsiveness at the strong cutoffs in 91 colon cancer patients. AUC: area under curve. (B) The ROC plot showed the sensitivity and specificity of IGF2BP1 expression (left panel: probe identify: 223689_at*; right panel: probe 241574_s_at*) for classifying chemotherapy responsiveness at the strong cutoffs in 16 rectal cancer patients. AUC: area under curve.



Supplementary figure 2: The uncropped blots.