

SUPPLEMENTARY INFORMATION

Membrane interactions accelerate the self-aggregation of huntingtin exon 1 fragments in a polyglutamine length-dependent manner

A. Marquette, C. Aisenbrey and B. Bechinger*

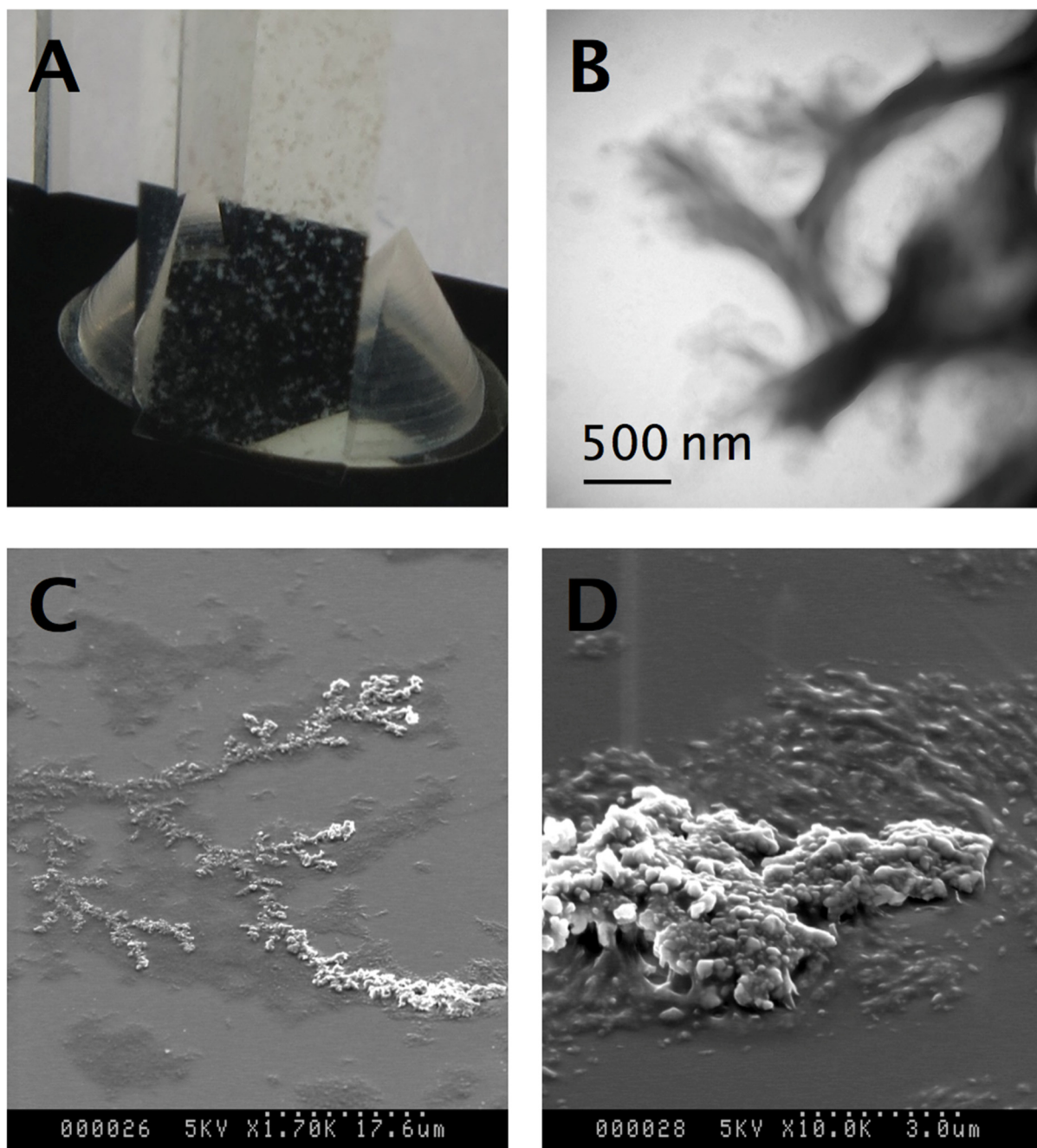


Figure S1 shows images of htt17-Q17 in the presence of 100 nm LUVs made of POPC/POPS 3/1 mole/mole (P/L = 1/26). **A.** Picture of a sample used for ThT fluorescence experiments (Figure 4) and taken after more than 1 hour of measurements. The flocculation of

lipid/peptide structures was visible in the cuvette under eye examination. **B.** The peptide-lipid mixture has been applied onto a copper grid and investigated by transmission electron microscopy. Bundles of fibers (dark) with liposomes attached (light grey) can be distinguished (enlargement 60000 x). **C** and **D.** Scanning electron microscopy images of the same preparation deposited onto a small size glass plate at 1700 x and 10000 x magnification, respectively. The images are suggestive of vesicles aligned along linear branched structures.