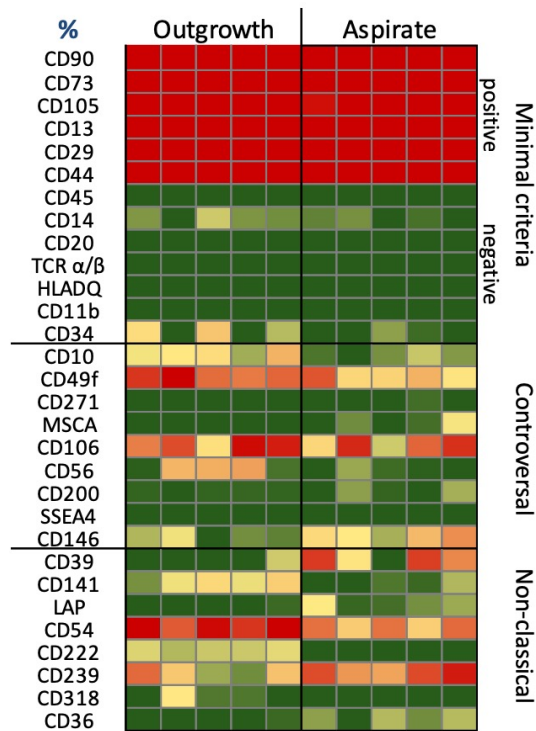
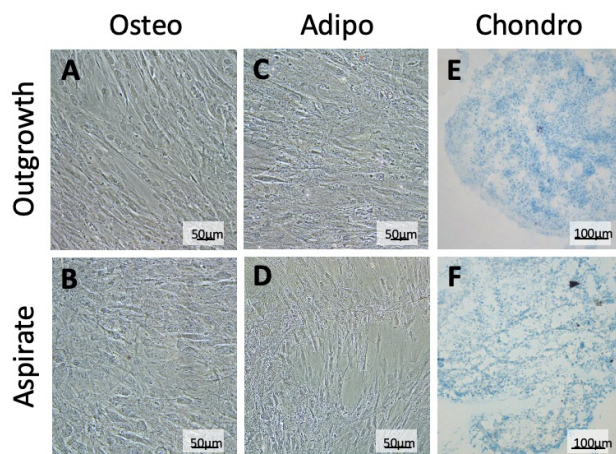


Supplementary figures



Supplementary figure 1. Heat map of expression level of all discussed markers. Depicted are the ISCT minimal criteria (positive and negative), controversially discussed markers, as well as non-classical MSC markers discussed in this study. Red color indicates high expression, green color low expression.



Supplementary figure 2. Controls for MSC lineage differentiation from outgrowth and aspirate cultures. MSCs were differentiated into the osteo-, adipo- and chondrogenic lineages. All differentiation assays were performed for 21 days and culture medium lacking supplementation was used as control. Resulting samples were fixed with 4% PFA before further treatment. Chondrogenic cell pellets were cut into 12 µm cryosections. **(A/B)** For evaluation of osteogenic differentiation, cells were stained with Alizarin Red S. **(C/D)** Adipose differentiation was determined using Oil Red O staining. **(E/F)** Alcian Blue staining was used for analyzing the chondrogenic cell differentiation.