

Supplementary data:

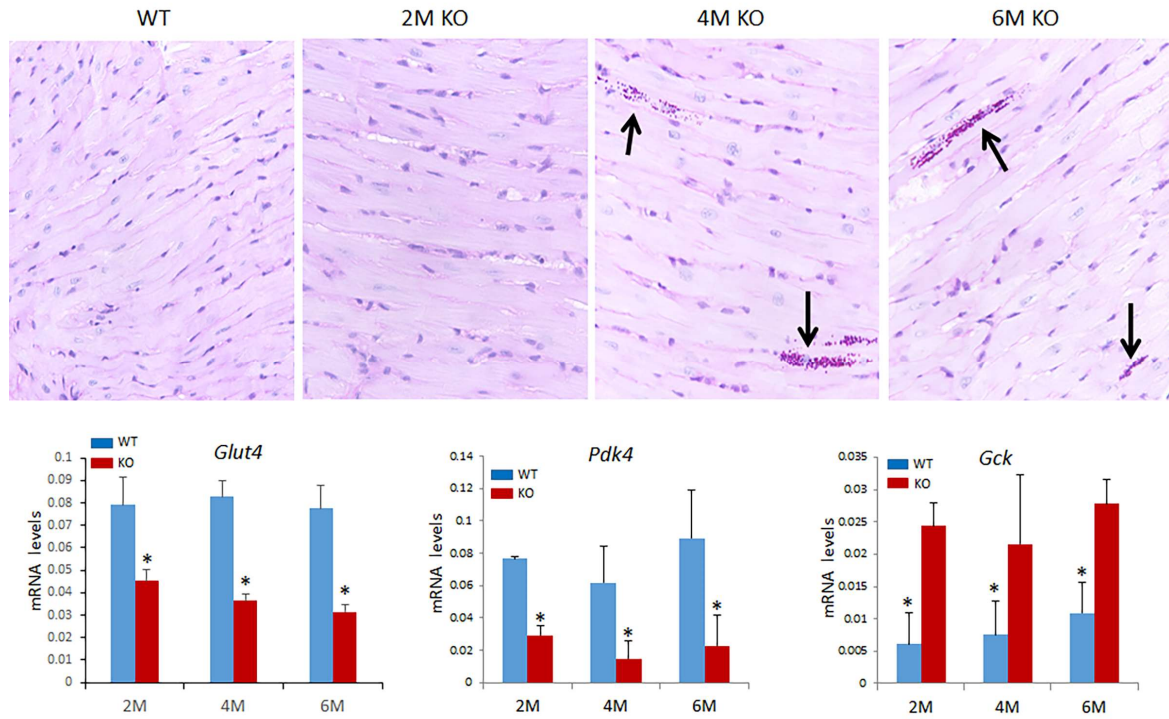


Figure S1. Glycogen storage in csPIMT^{-/-} mouse hearts. (A) Images of PAS staining patterns of PIMT^{fl/fl} and csPIMT^{-/-} mouse hearts of 2, 4 and 6 months. Glycogen storage in csPIMT^{-/-} hearts of 4 and 6 months is indicated by black arrows; (B) Quantification of mRNA levels for *Glut4*, *PDK4* and *Gck* in PIMT^{fl/fl} and csPIMT^{-/-} mouse hearts. mRNA levels were quantified by RT-qPCR assays. Each group was analyzed using 5 different mic and the values were expressed as the mean \pm SD. * $p < 0.05$.

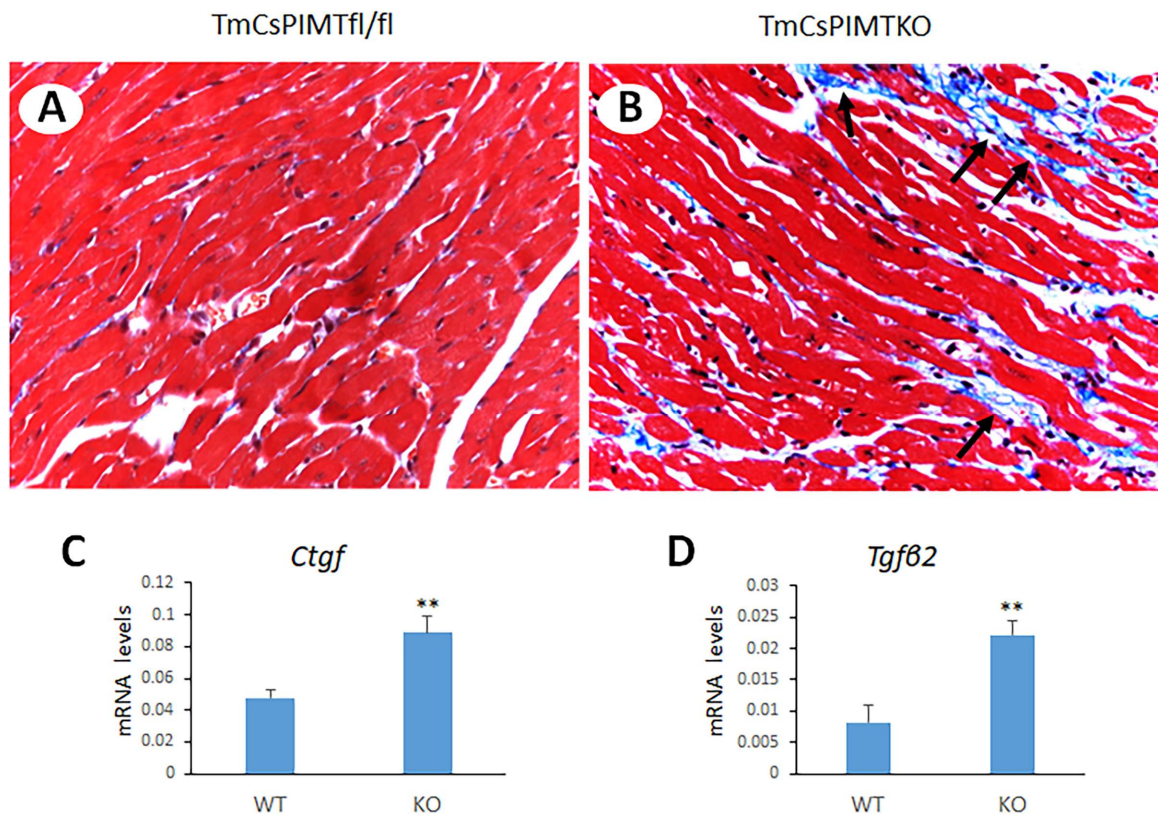


Figure S2. Cardiac fibrosis in TmcsPIMT^{-/-} mouse heart. (A,B) Masson Trichrome staining images showing fibrosis (intensely stained blue color, shown by black arrow); (C,D) Quantification of mRNA levels for *Ctgf* and *Tgfβ2* in PIMT^{fl/fl} and csPIMT^{-/-} mouse hearts. mRNA levels were quantified by RT-qPCR assays. Each group was analyzed using 5 different mice and values were expressed as the mean ± SD. ** $p < 0.01$.