

Supplementary Materials: Organ and Tissue-Specific Localisation of Selected Cell Wall Epitopes in the Zygotic Embryo of *Brachypodium distachyon*

Alexander Betekhtin, Anna Milewska-Hendel, Joanna Lusinska, Lukasz Chajec, Ewa Kurczynska and Robert Hasterok

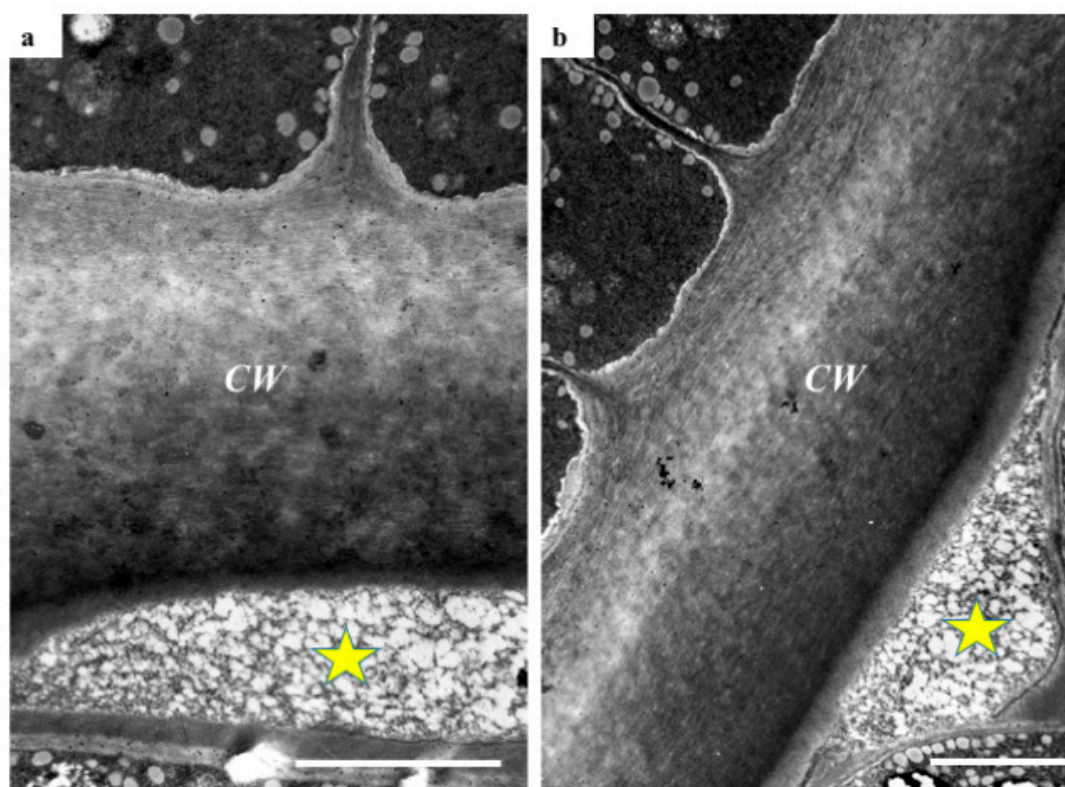


Figure S1. TEM of the radicle epidermis (a,b). Yellow stars showing the space with fibrillary component between radicle and coleorhiza. Abbreviations: CW—cell wall. Bars: (a) 3 μm ; (b) 4.5 μm .

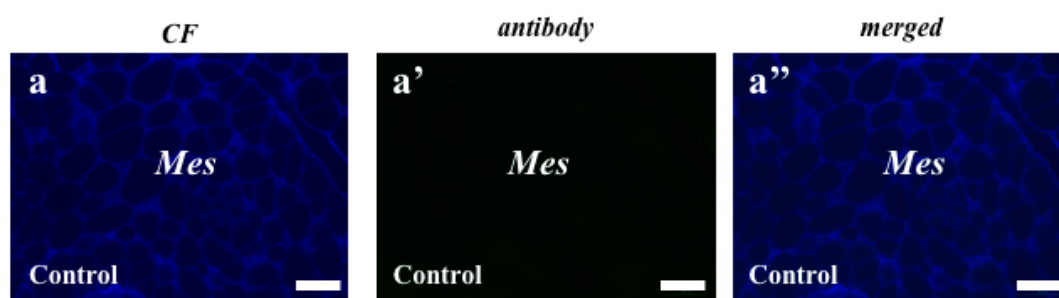


Figure S2. Negative control. (a–a'') no antibody fluorescent signals are present. Abbreviations: CF—calcofluor, Mes—mesocotyl. Bars: 10 μm .