

Table S1. Intra-day and inter-day precision of the of the PCTs determination by porous graphitic carbon HPLC-MS/MS

Analyte	Concentration, $\mu\text{g L}^{-1}$	Intra-day assay			Inter-day assay		
		Measured concentration $\mu\text{g L}^{-1}$	Accuracy, %	Precision, %	Measured concentration $\mu\text{g L}^{-1}$	Accuracy, %	Precision, %
I	25	28.4±1.3	114	5.17	24.2±0.9	96.9	5.09
II	50	48.1±1.4	96.2	3.32	49.1±2.5	98.3	6.86
IV	25	25.4±1.2	101	5.44	23.8±0.9	95.4	4.84
VII	50	49.5±2.4	99	5.62	45.6±7.1	91.3	9.54
X	50	53.7±4.1	107	8.57	54.4±3.8	105	9.84
III	25	23.5±2.1	94.2	9.25	24.9±3.1	99.7	14.4
V	75	87.6±7.0	117	7.95	77.7±2.2	104	3.75
VIII	125	124±12	99.5	11.2	126±7	101	6.71
VI	200	217±13	109	6.85	206±2	103	1.31
IX	350	315±26	89.9	9.61	406±14	116	4.03

Table S2. Matrix effect on the determination of PCTs by porous graphitic carbon HPLC-MS/MS estimated in the spike recovery test.

Analyte	Initial concentration, $\mu\text{g L}^{-1}$	Spiked, $\mu\text{g L}^{-1}$	Found, $\mu\text{g L}^{-1}$	Recovery, %
I	5.55 \pm 1.54	25	27.8 \pm 2.2	91
		250	210 \pm 3	82
		500	466 \pm 11	92
II	66.3 \pm 5.2	50	118 \pm 3	101
		500	527 \pm 3	93
		1000	1035 \pm 10	97
IV	1.82 \pm 0.73	25	23.8 \pm 3.3	89
		250	210 \pm 5	84
		500	476 \pm 7	95
VII	–	50	42.5 \pm 2.5	85
		500	424 \pm 23	85
		1000	974 \pm 18	97
X	–	50	40.7 \pm 2.7	81
		500	449 \pm 40	90
		1000	936 \pm 12	94
III	11.3 \pm 2.3	25	34.4 \pm 2.1	95
		250	246 \pm 7	94
		500	452 \pm 7	88
V	–	75	67.5 \pm 2.8	90
		750	651 \pm 30	87
		1500	1438 \pm 13	96
VIII	–	125	123 \pm 11	99
		1250	1102 \pm 25	88
		2500	2225 \pm 16	89
VI	–	200	187 \pm 4	93
		2000	1713 \pm 12	86
		4000	3820 \pm 119	96
IX	–	350	289 \pm 32	83
		3500	3210 \pm 39	92
		7000	6670 \pm 31	95

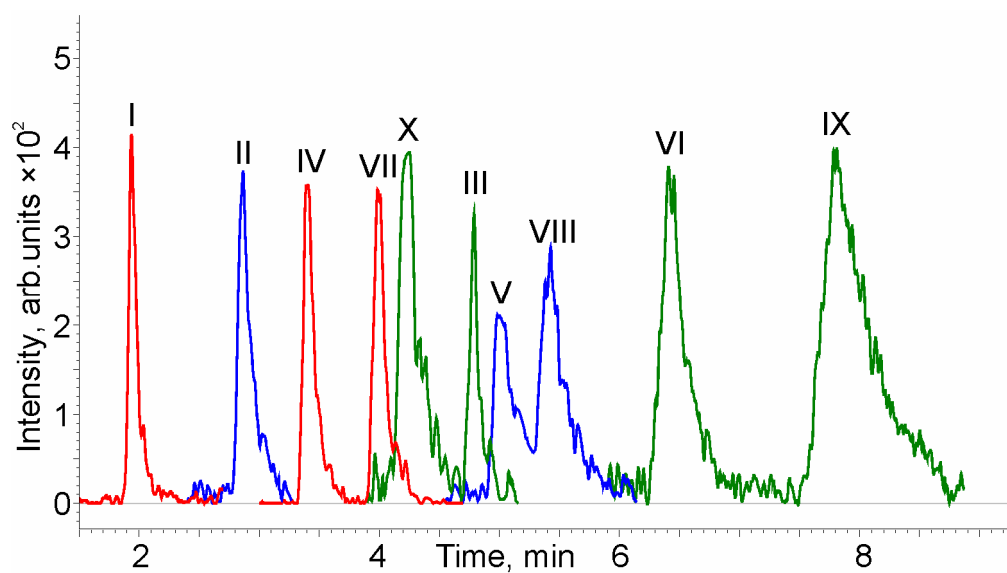


Figure S1. HPLC–MS/MS chromatogram of analytes model mixture with the concentrations close to LOQ (I, IV and III - 25 µg L⁻¹; II, VII and X - 50 µg L⁻¹; V - 75 µg L⁻¹; VIII - 125 µg L⁻¹; VI - 200 µg L⁻¹; IX - 350 µg L⁻¹).