

# **Monitoring the Release of Methylglyoxal (MGO) from Honey and Honey-Based Formulations**

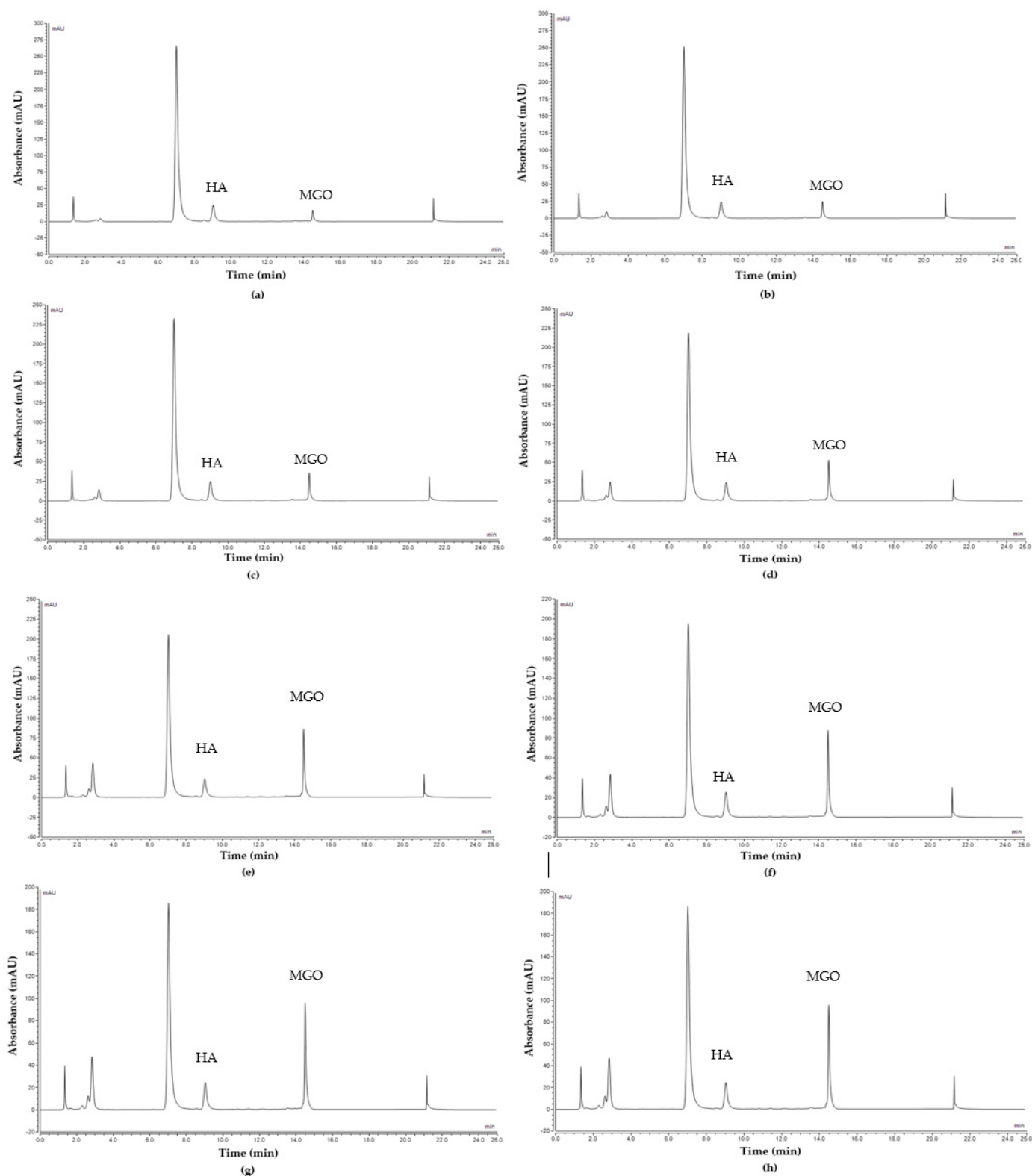
**Md Lokman Hossain <sup>1</sup>, Lee Yong Lim <sup>1</sup>, Katherine Hammer <sup>2,3</sup>, Dhanushka Hettiarachchi <sup>1</sup> and Cornelia Locher <sup>1,3,\*</sup>**

<sup>1</sup> Division of Pharmacy, School of Allied Health, University of Western Australia, Crawley 6009, Australia

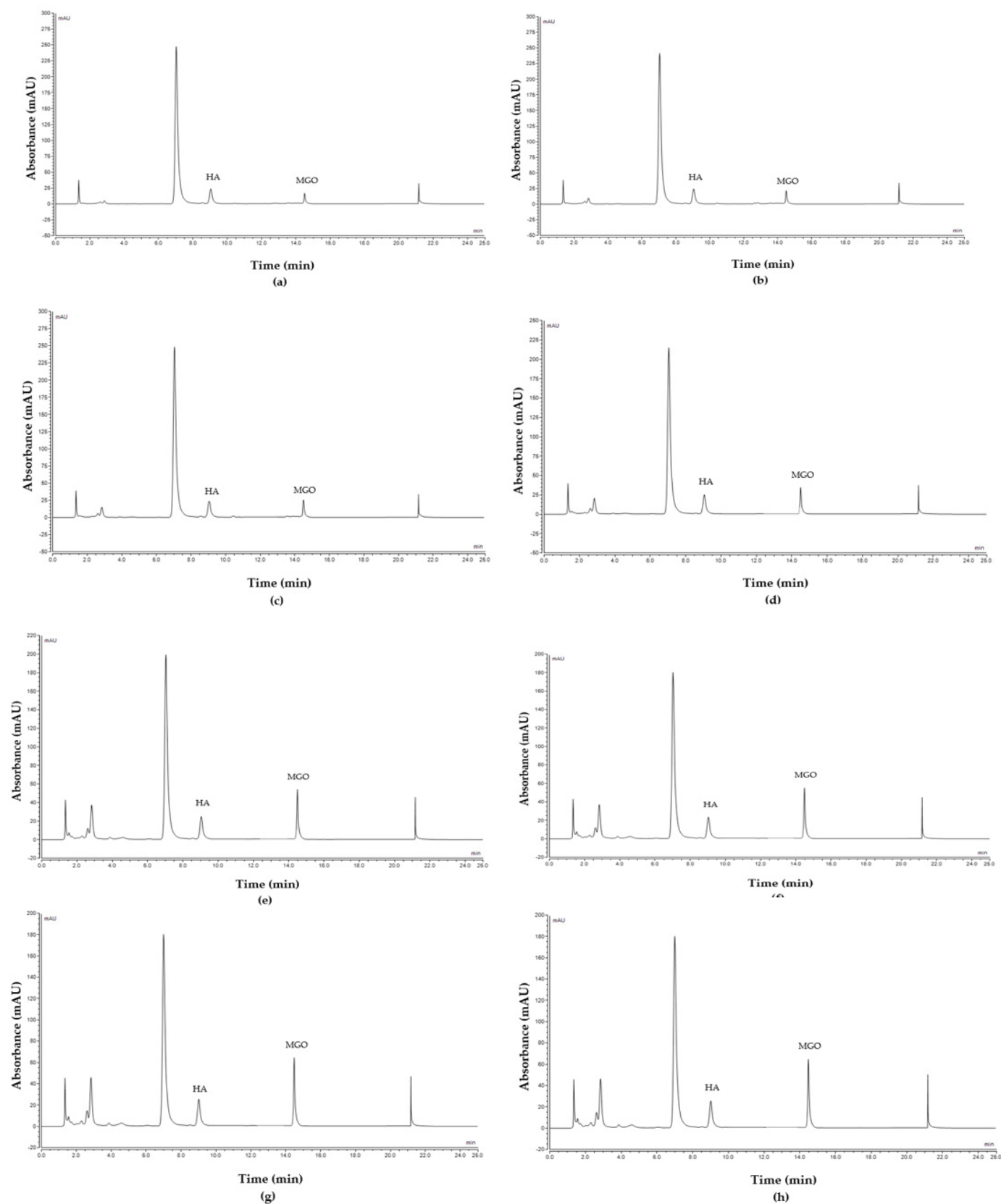
<sup>2</sup> School of Biomedical Sciences, University of Western Australia, Crawley 6009, Australia

<sup>3</sup> Cooperative Research Centre for Honey Bee Products Limited, 128 Yanchep Beach Road, Perth 6035, Australia

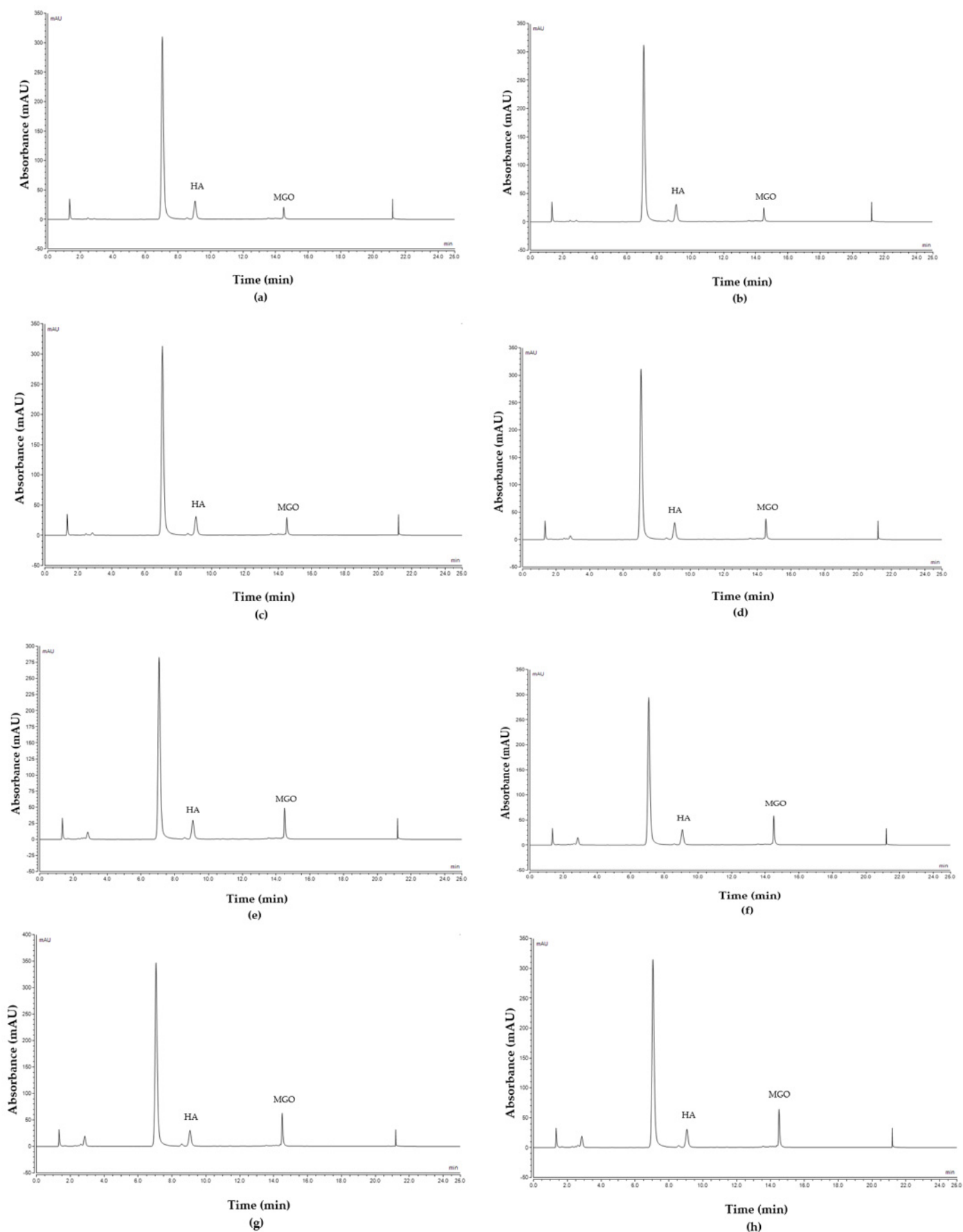
\* Correspondence: [connie.locher@uwa.edu.au](mailto:connie.locher@uwa.edu.au)



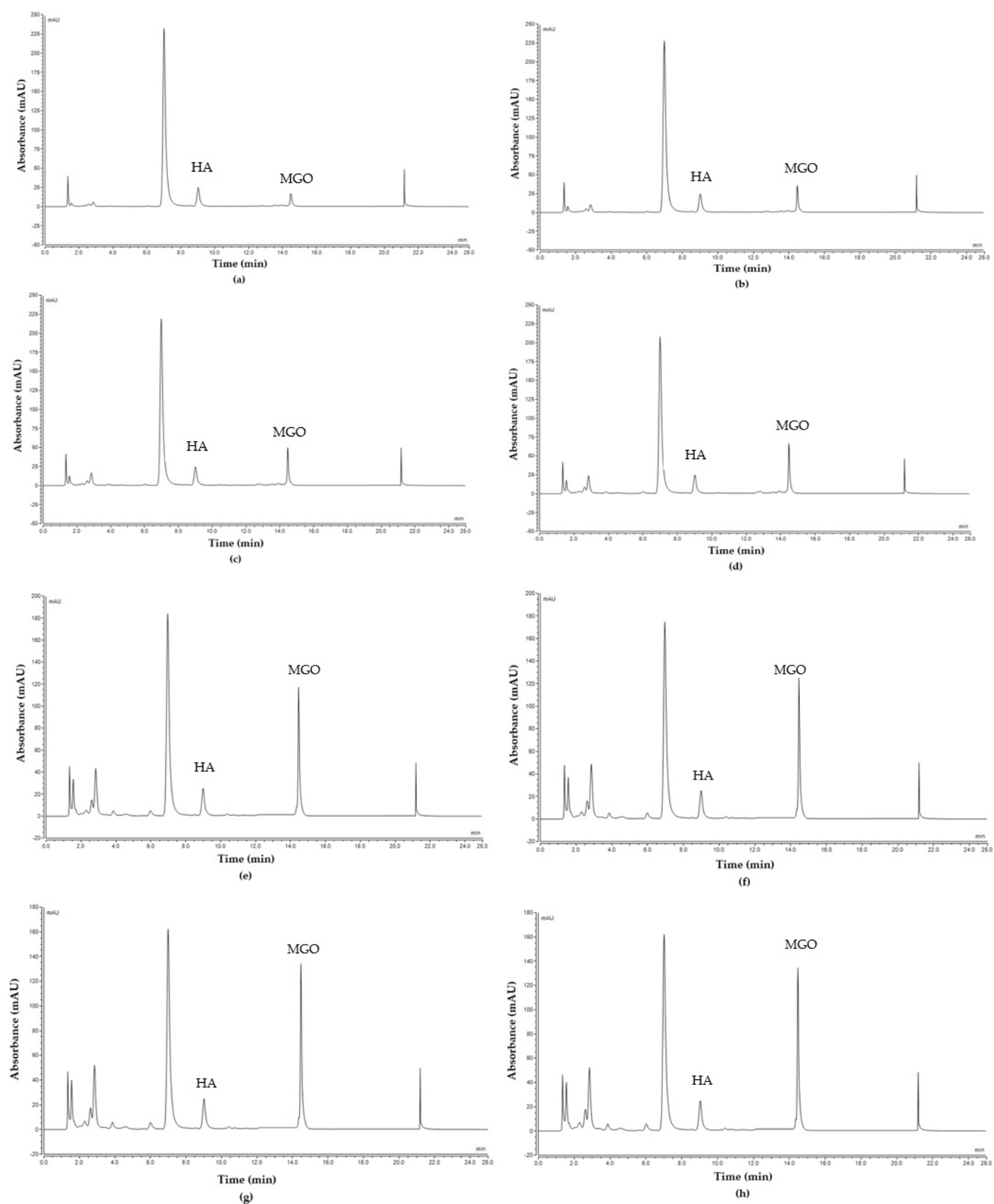
**Figure S1.** Peak profile of MGO released from spiked artificial honey at different time points: (a) 15 min, (b) 30 min, (c) 1 h, (d) 3 h, (e) 6 h, (f) 9 h, (g) 12 h and (h) Baseline.



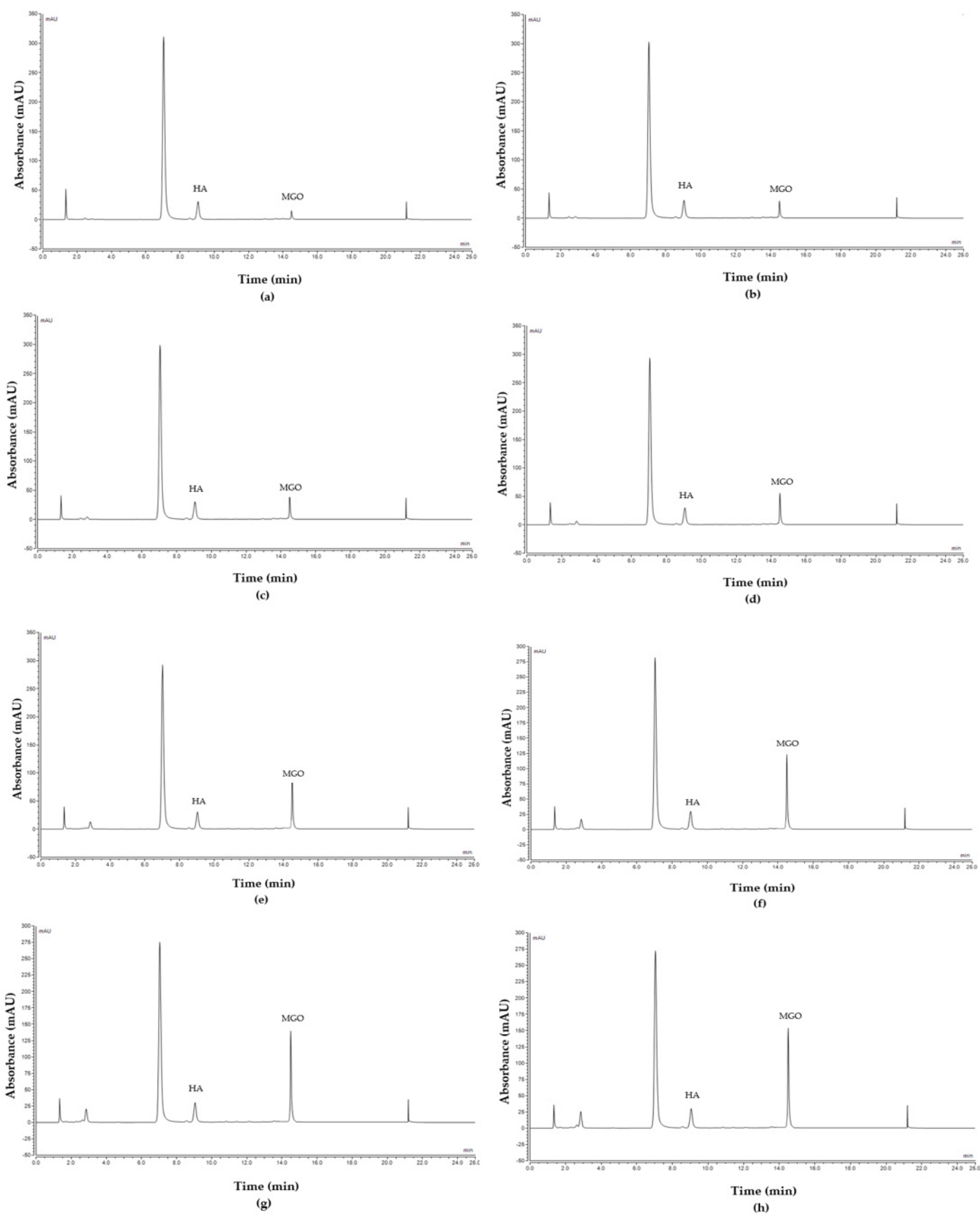
**Figure S2.** Peak profile of MGO released from Pure NZ Manuka honey at different time points: (a) 15 min, (b) 30 min, (c) 1 h, (d) 3 h, (e) 6 h, (f) 9 h, (g) 12 h and (h) Baseline.



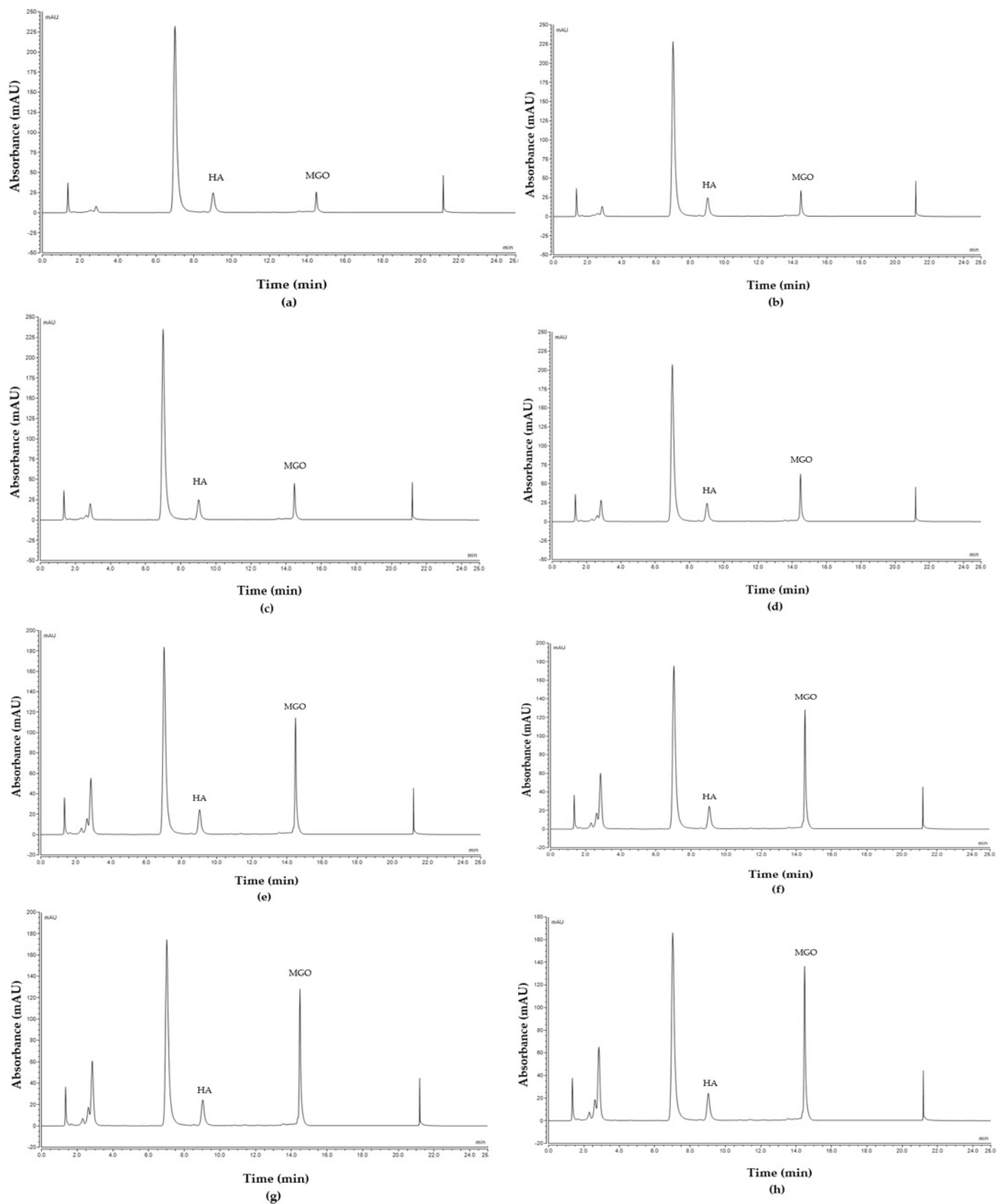
**Figure S3.** Peak profile of MGO released from commercial 'Product A' at different time points: (a) 15 min, (b) 30 min, (c) 1 h, (d) 3 h, (e) 6 h, (f) 9 h, (g) 12 h and (h) Baseline.



**Figure S4.** Peak profile of MGO released from commercial 'Product B' at different time points: (a) 15 min, (b) 30 min, (c) 1 h, (d) 3 h, (e) 6 h, (f) 9 h, (g) 12 h and (h) Baseline.



**Figure S5.** Peak profile of MGO released from commercial 'Product C' at different time points: (a) 15 min, (b) 30 min, (c) 1 h, (d) 3 h, (e) 6 h, (f) 9 h, (g) 12 h and (h) Baseline.



**Figure S6.** Peak profile of MGO released from commercial 'Product D' at different time points: (a) 15 min, (b) 30 min, (c) 1 h, (d) 3 h, (e) 6 h, (f) 9 h, (g) 12 h and (h) Baseline.