

Supporting Information

Multiple Effects of High Surface Area Hollow Nanospheres Assembled by Nickel Cobaltate Nanosheets on Soluble Lithium Polysulfides

Jun Pu, Xiaomei Zhu, Jie Wang, Shaomeng Yu*

Correspondence: jpu@ahnu.edu.cn (J.P.)

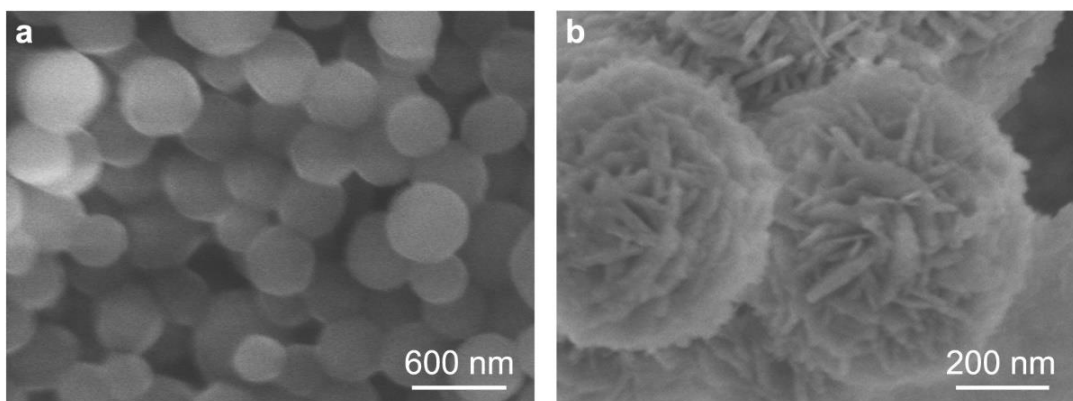


Figure S1. SEM images of (a) carbon sphere templates and (b) Co-Ni precursors.

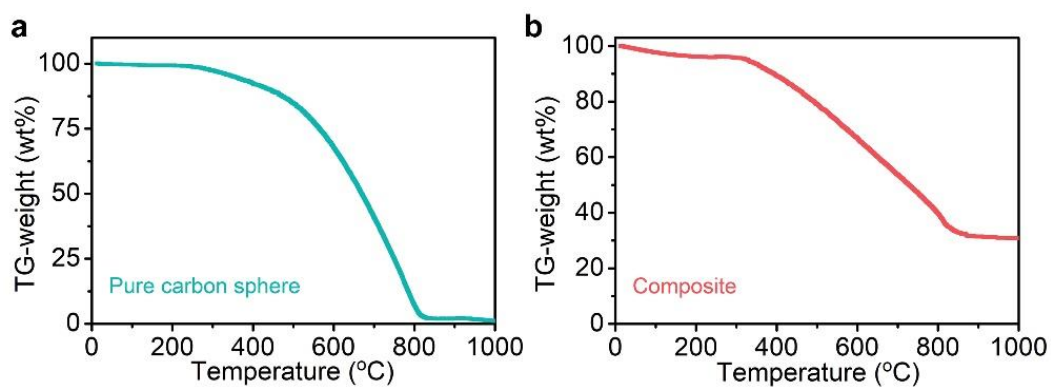


Figure S2. TGA results of (a) pure carbon sphere, and (b) precursor composite.

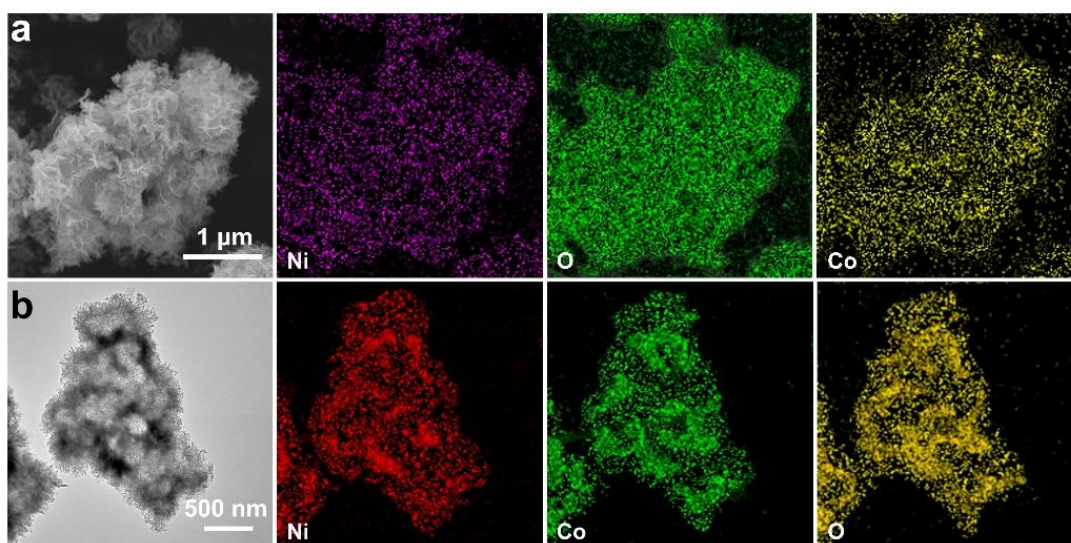


Figure S3. Elemental mapping of NiCo_2O_4 : (a) SEM, (b) TEM.

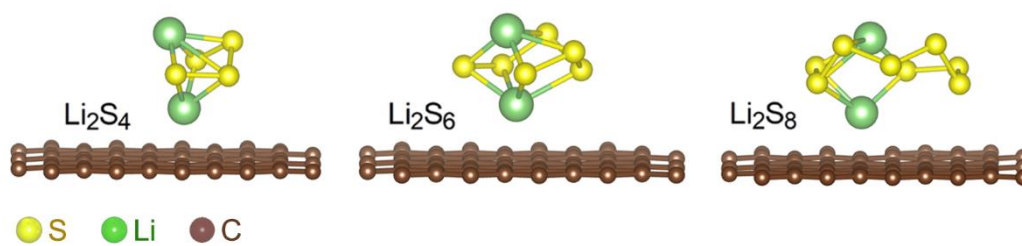


Figure S4. Mechanism diagram of interaction between carbon and LiPSs.

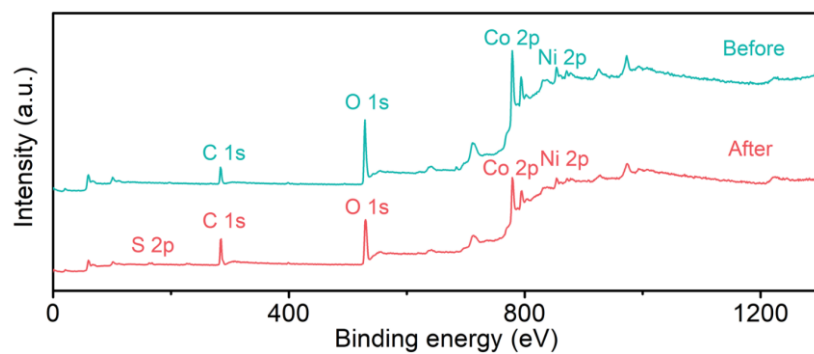


Figure S5. XPS survey spectra of NiCo_2O_4 before and after Li_2S_4 adsorption.

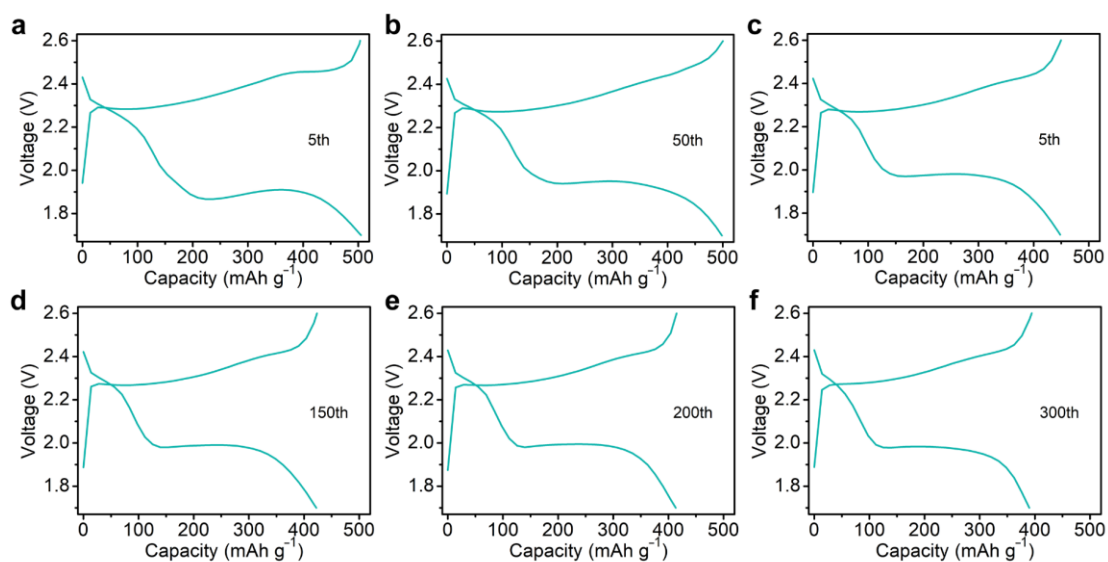


Figure S6. Discharge-charge profiles of $\text{NiCo}_2\text{O}_4@\text{PP}$ cathode at different cycles.

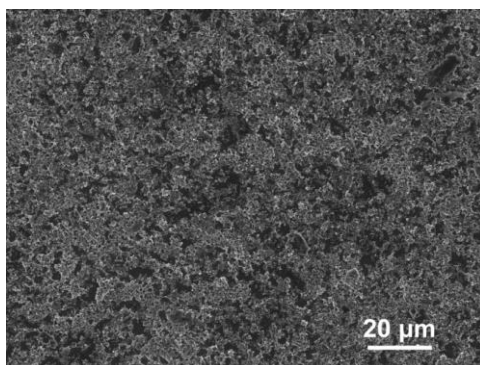


Figure S7. The surface SEM of composite separator after cyclic test.