

Supplementary Materials

Multivariate Chemometric Comparison of Forced Degradation and Electrochemical Oxidation LC–MS Profiles of Maraviroc

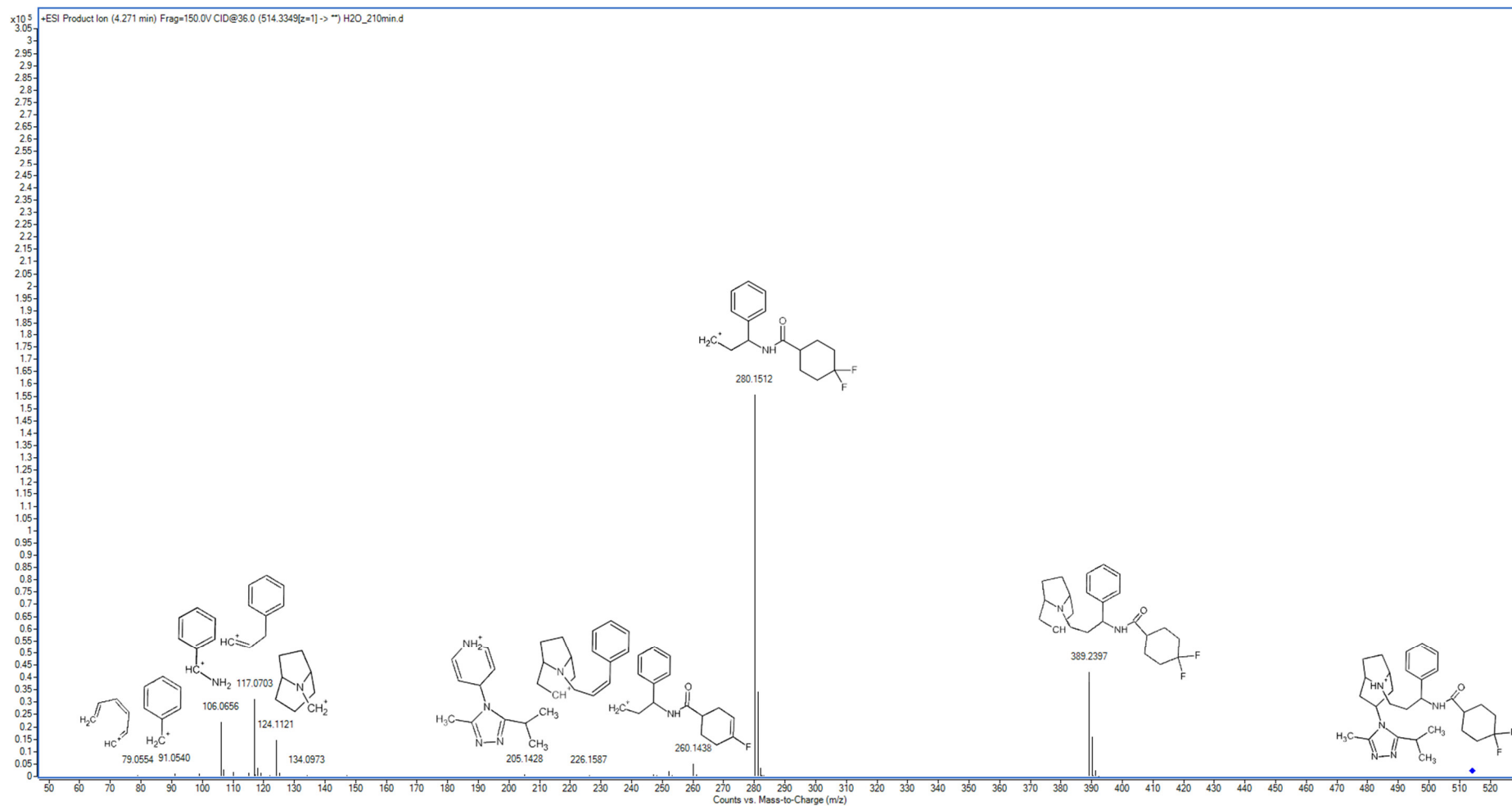


Figure S1. MS/MS spectrum and fragmentation pattern of single-charged maraviroc.

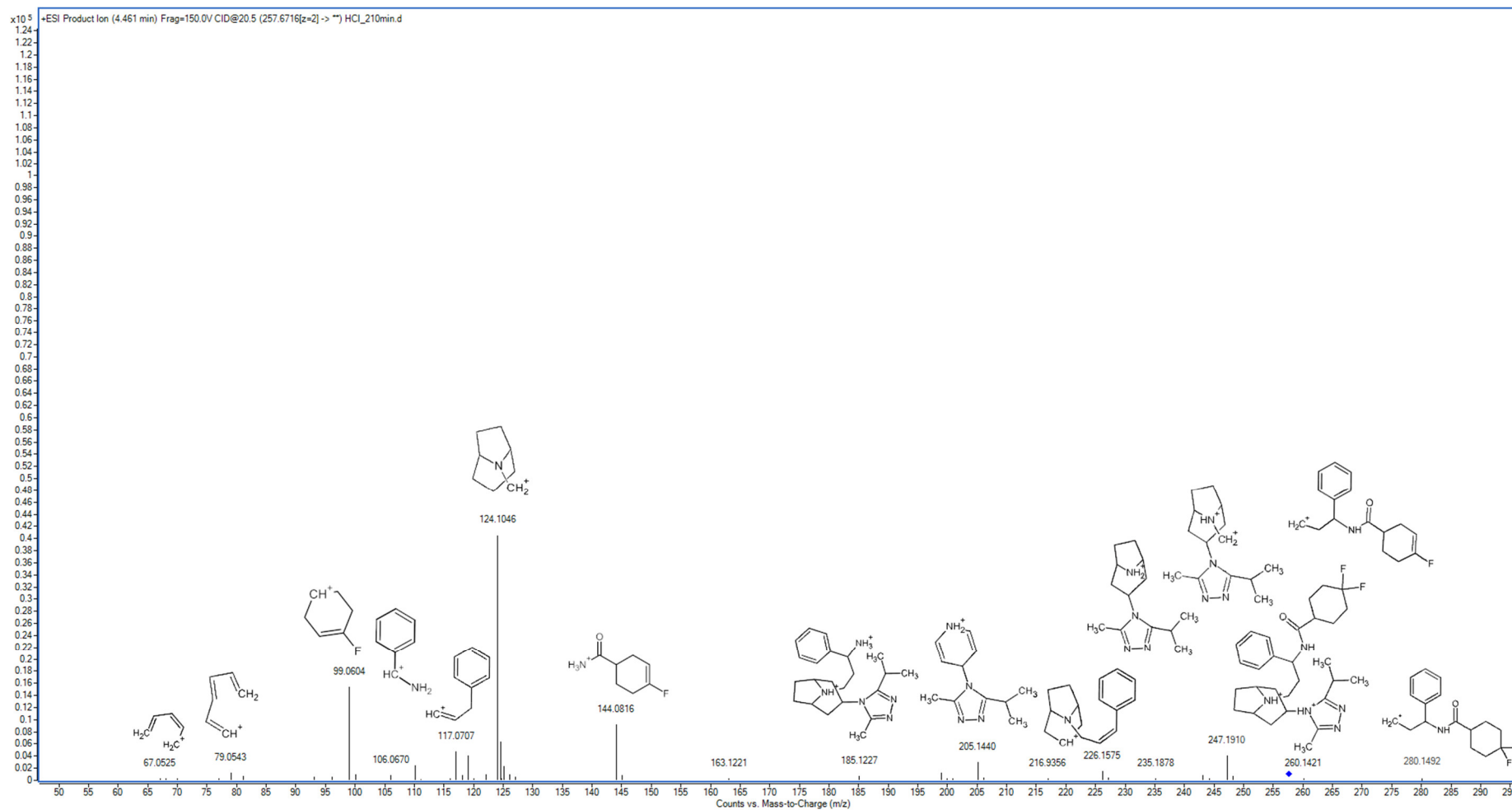


Figure S2. MS/MS spectrum and fragmentation pattern of double-charged maraviroc.

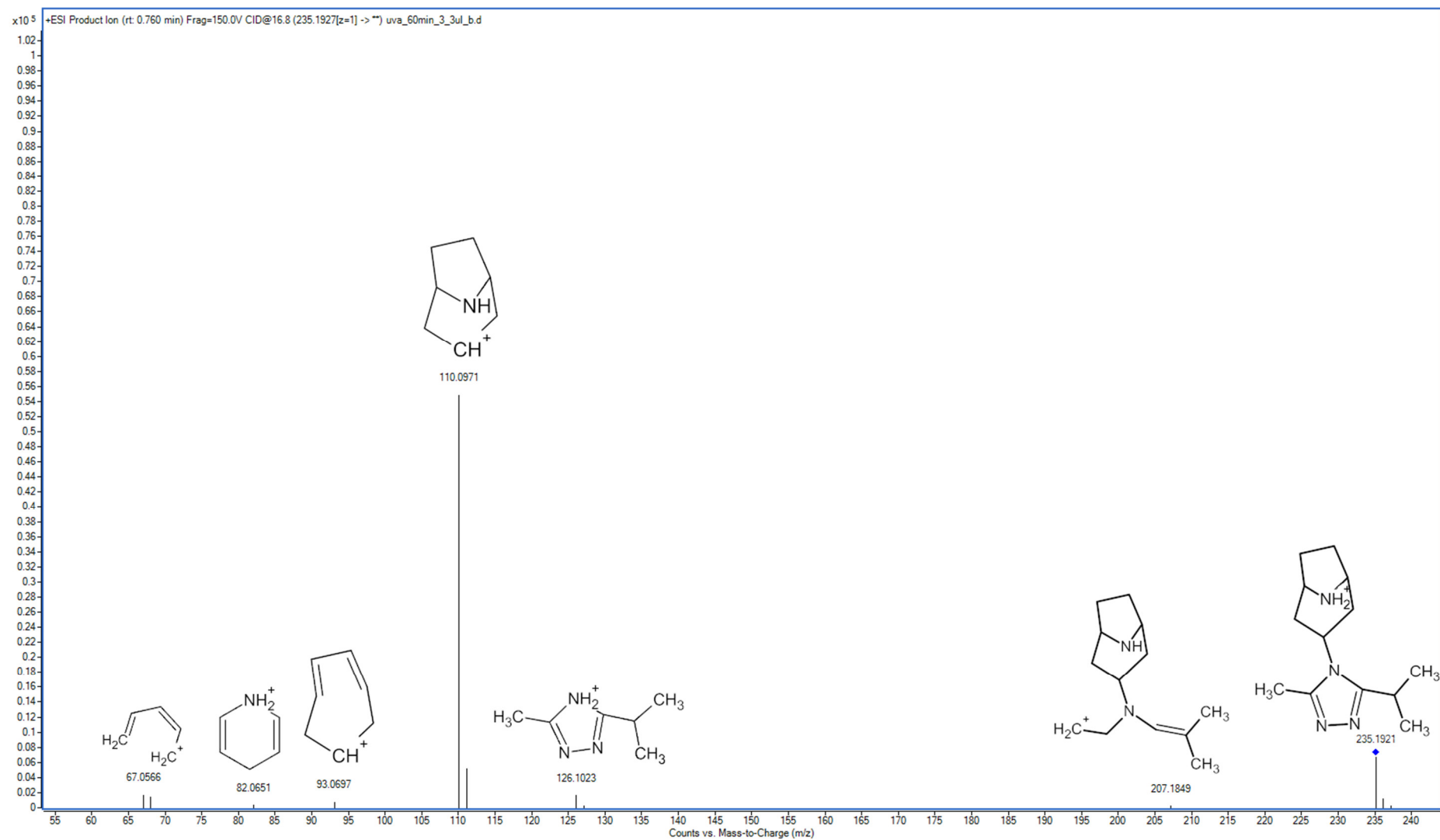


Figure S3. MS/MS spectrum and fragmentation pattern of TP1 metabolite.

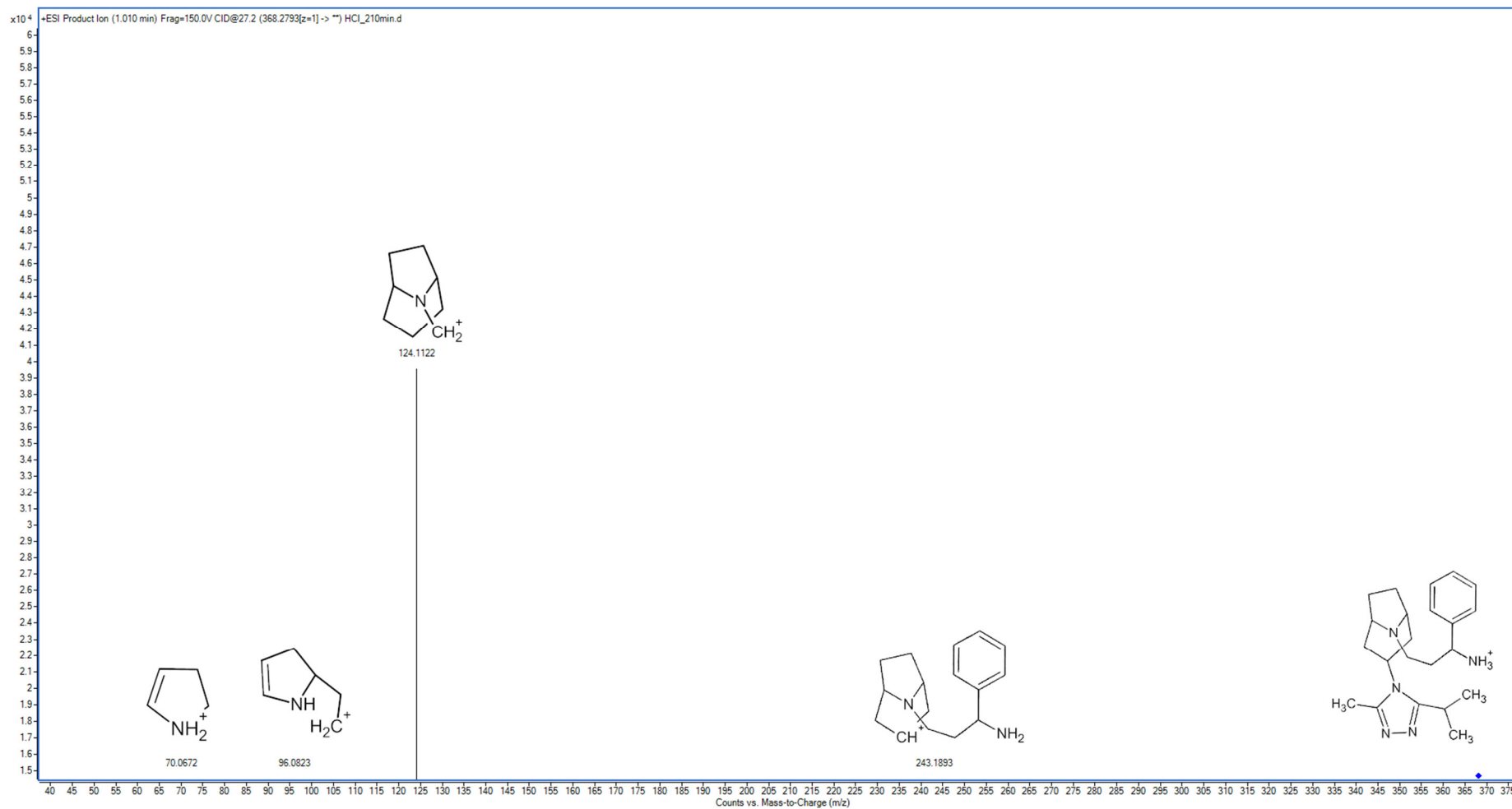


Figure S4. MS/MS spectrum and fragmentation pattern of TP2 metabolite.

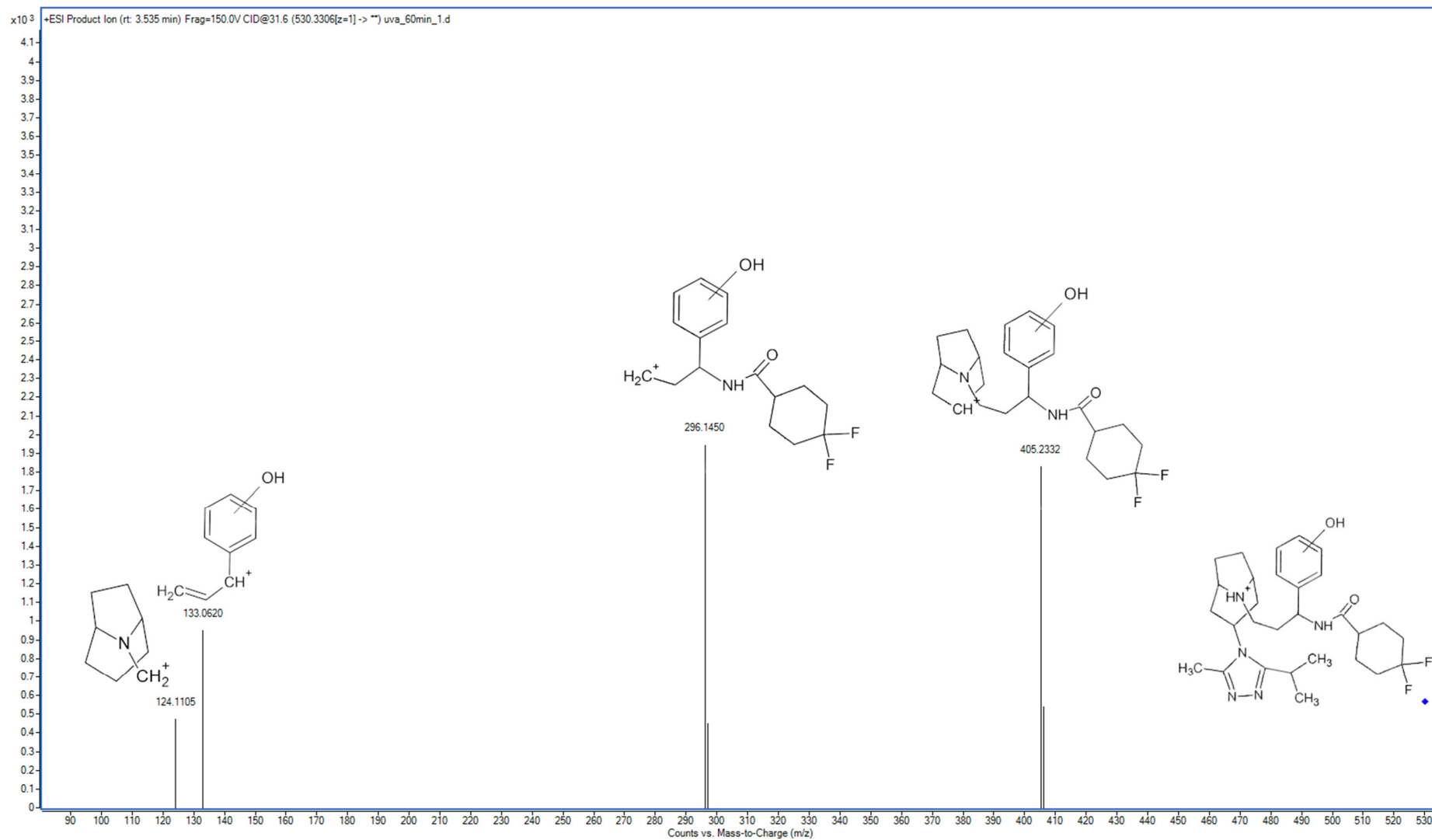


Figure S5. MS/MS spectrum and fragmentation pattern of single-charged TP3.

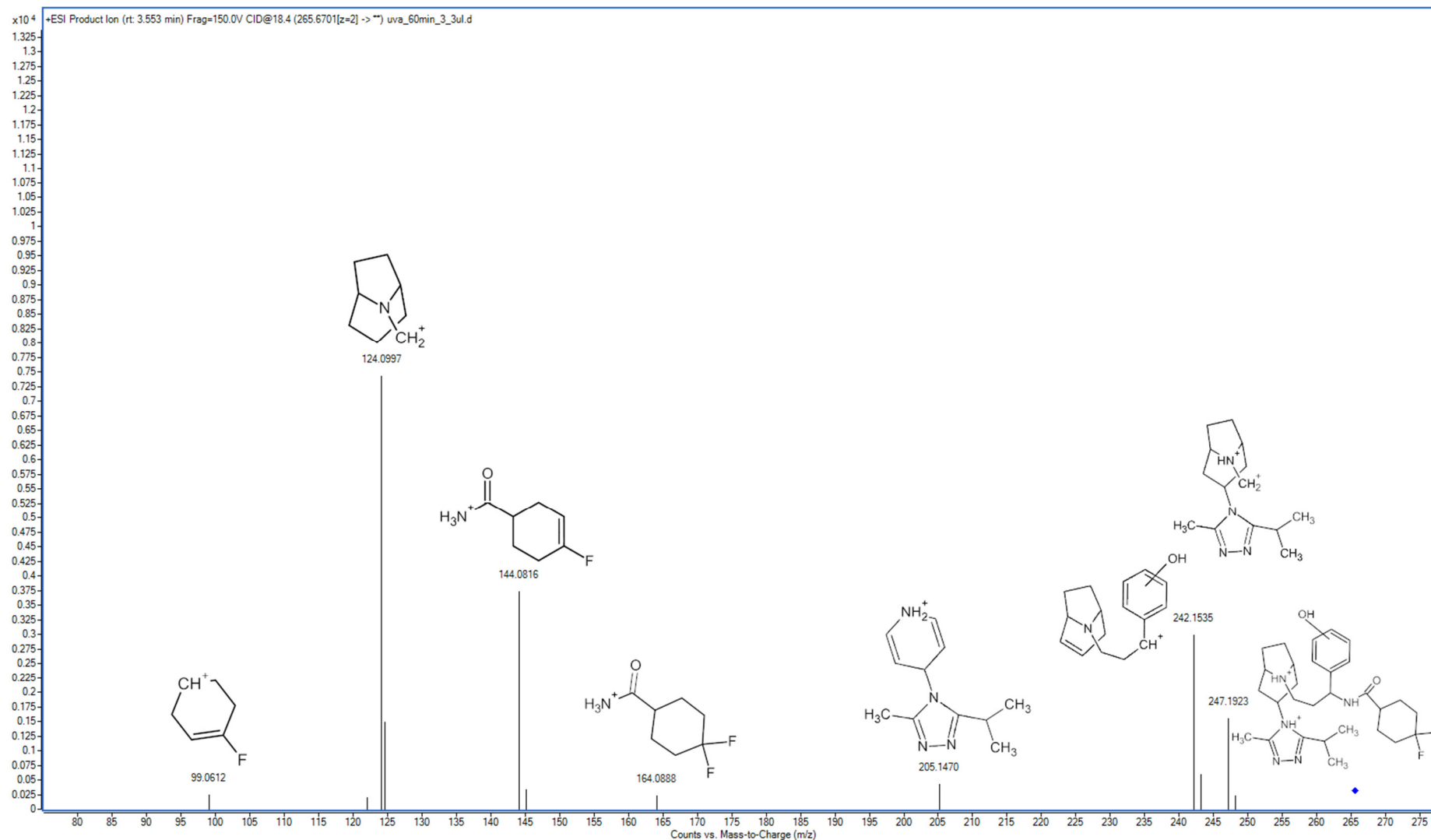


Figure S6. MS/MS spectrum and fragmentation pattern of double-charged TP3.

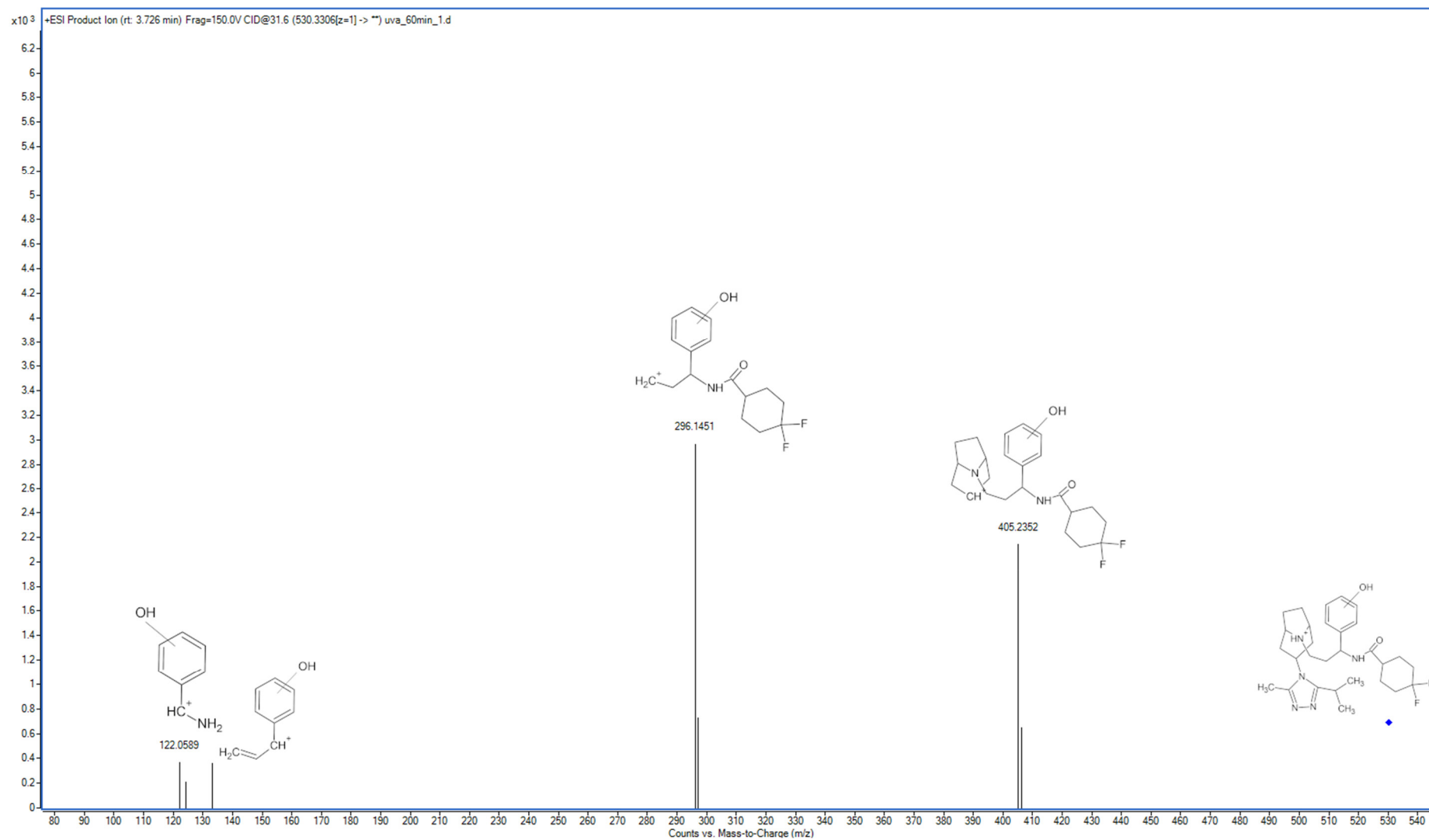


Figure S7. MS/MS spectrum and fragmentation pattern of single-charged TP4.

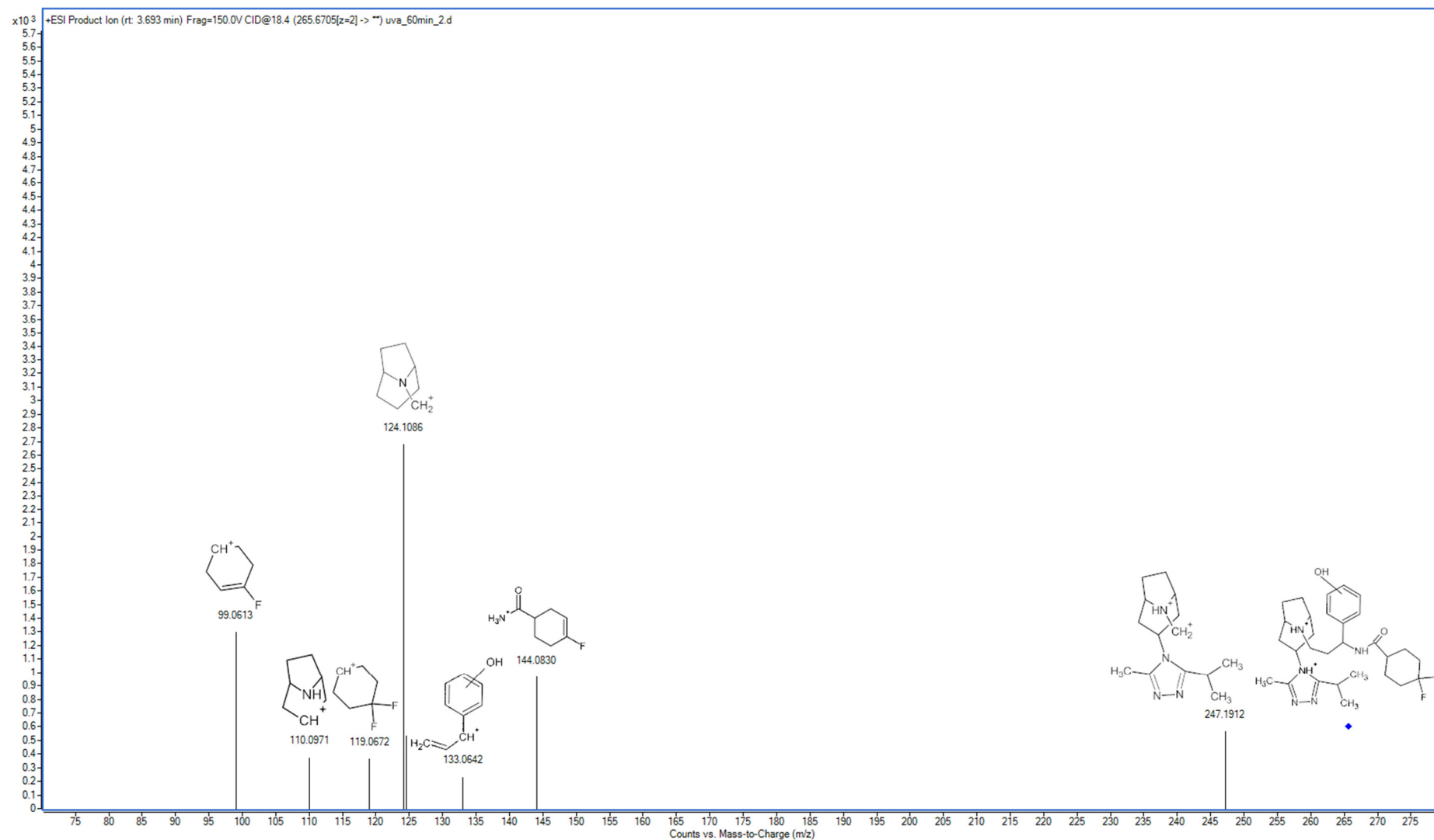


Figure S8. MS/MS spectrum and fragmentation pattern of double-charged TP4.

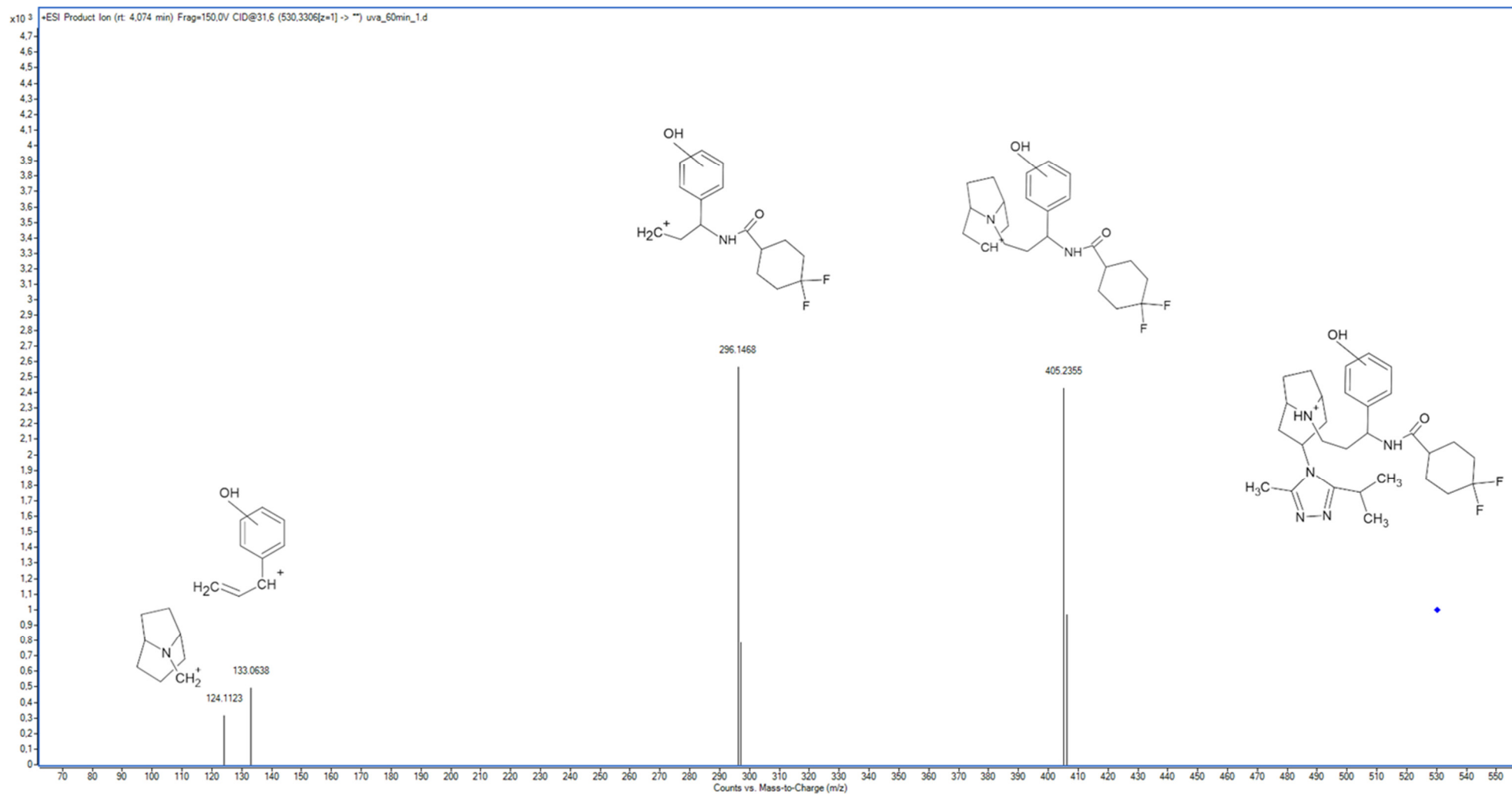


Figure S9. MS/MS spectrum and fragmentation pattern of single-charged TP5.

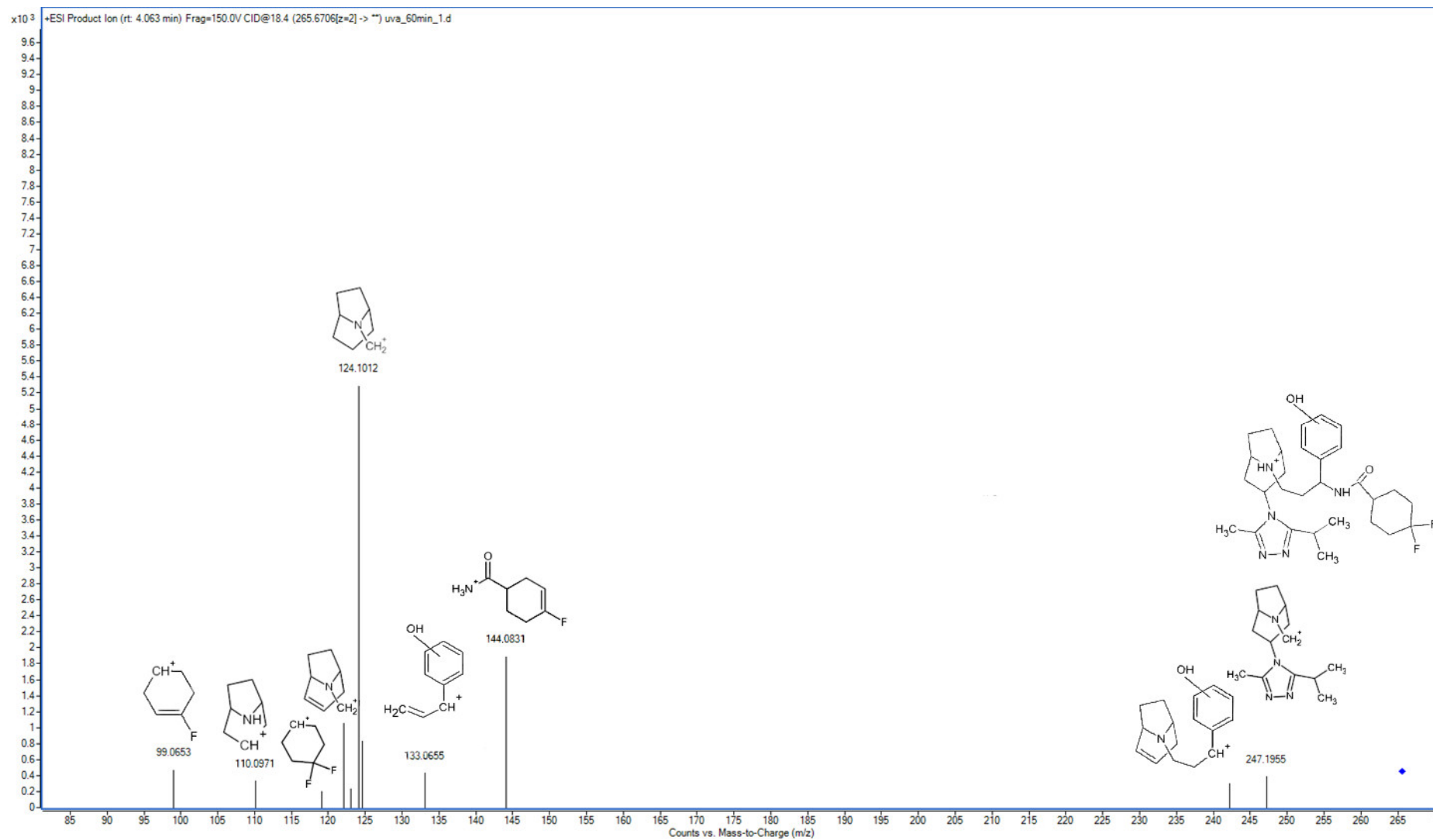


Figure S10. MS/MS spectrum and fragmentation pattern of double-charged TP5.

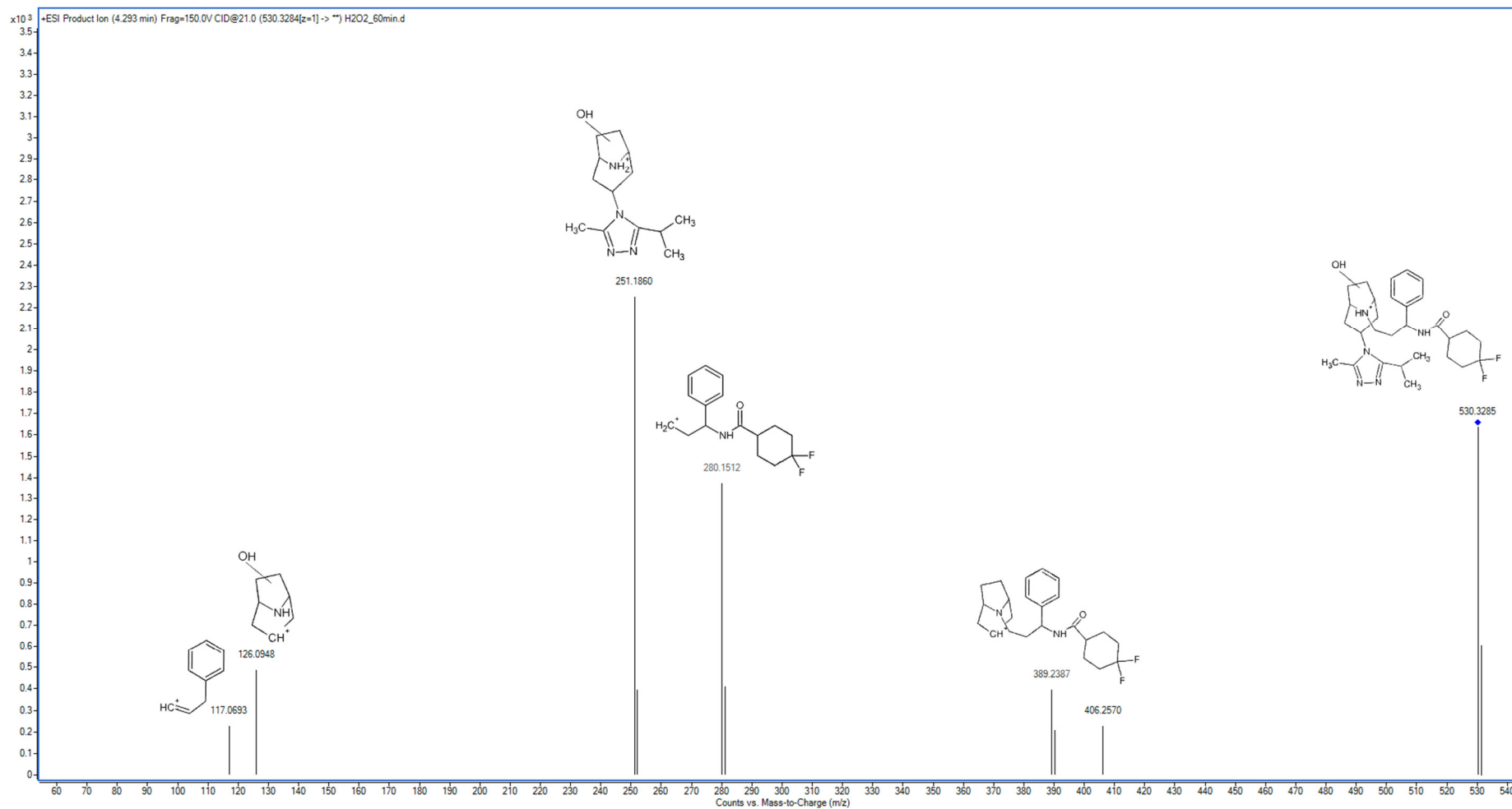


Figure S11. MS/MS spectrum and fragmentation pattern of single-charged TP6.

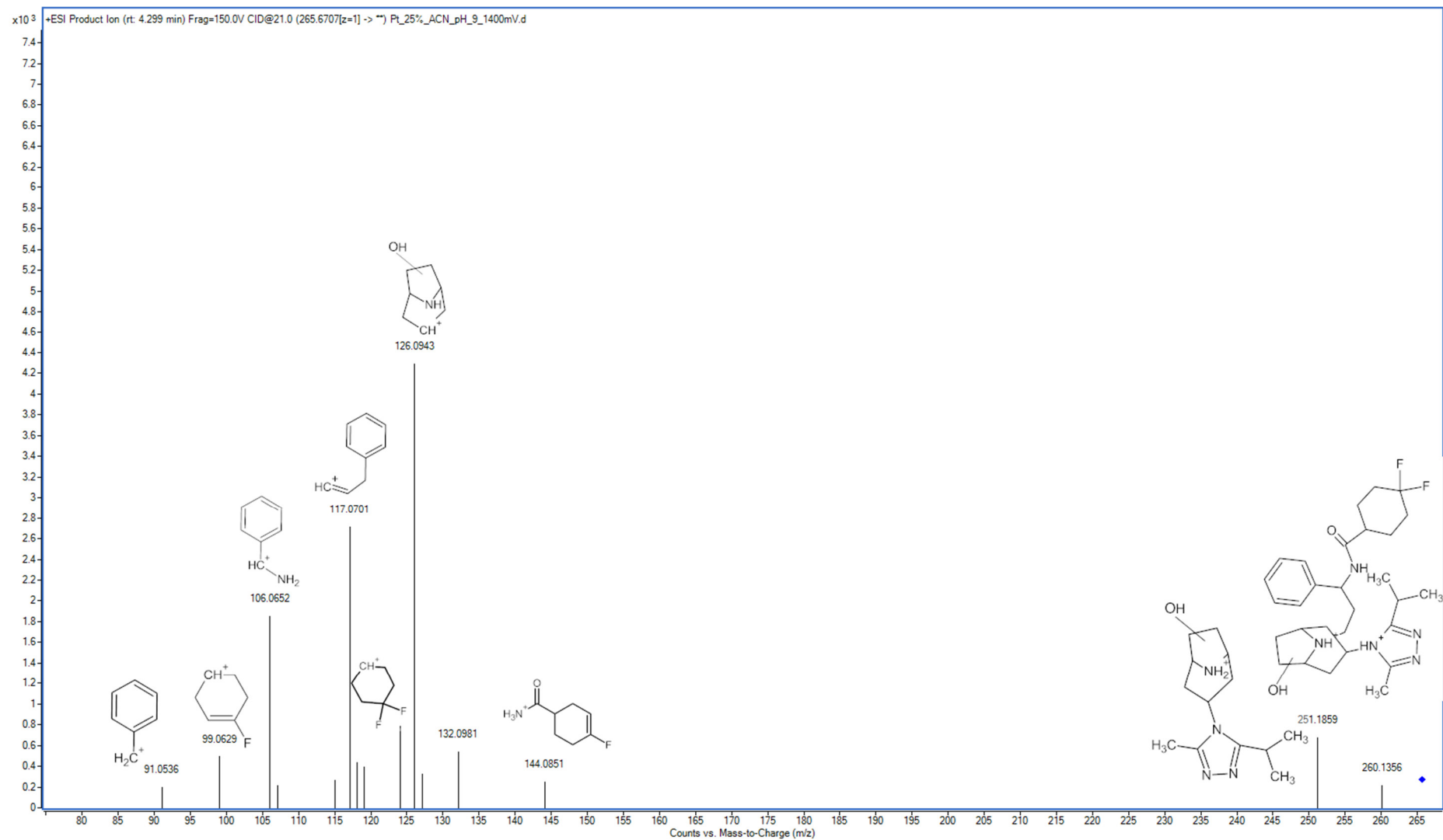


Figure S12. MS/MS spectrum and fragmentation pattern of double-charged TP6.

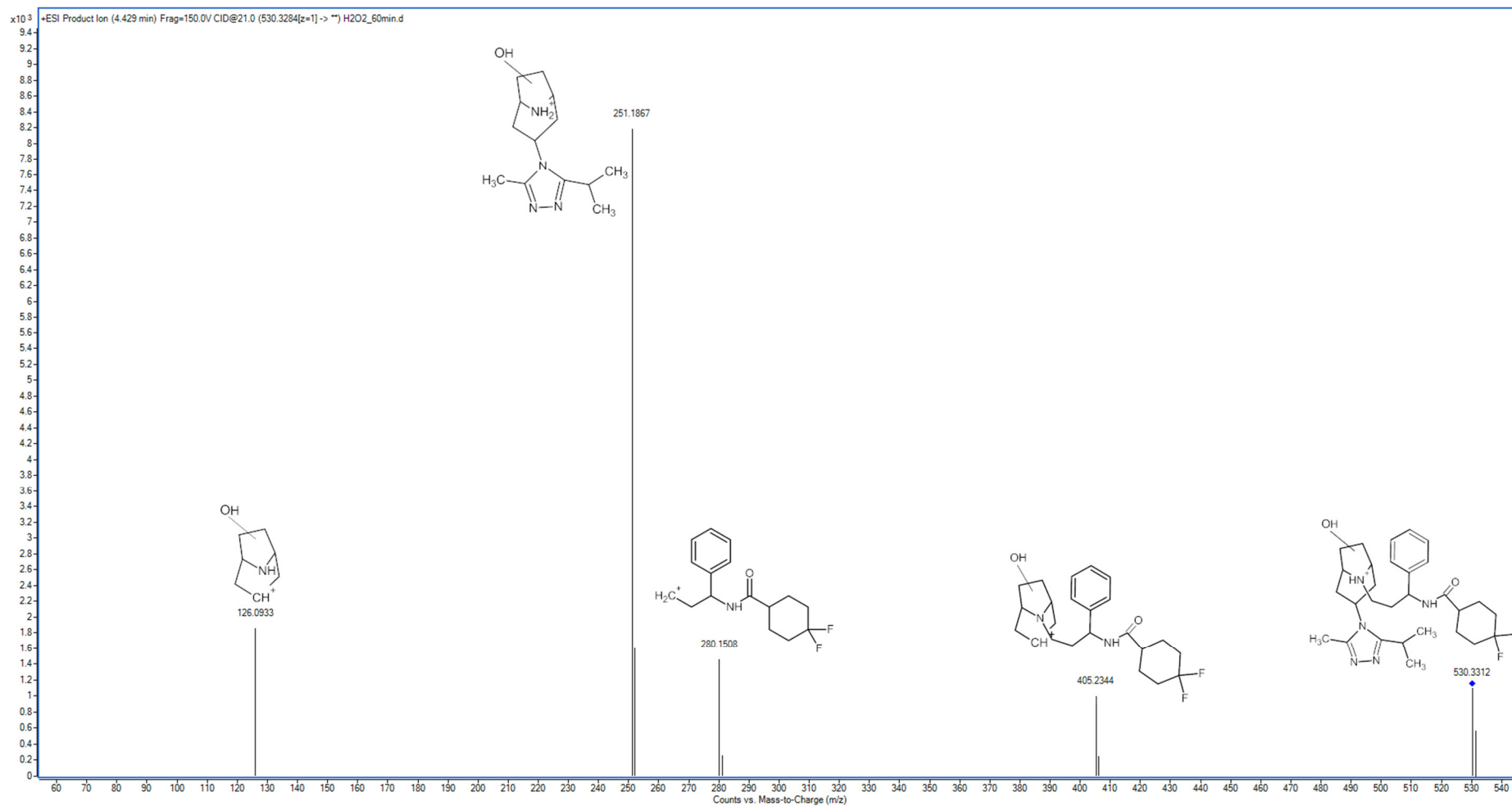


Figure S13. MS/MS spectrum and fragmentation pattern of single-charged TP7.

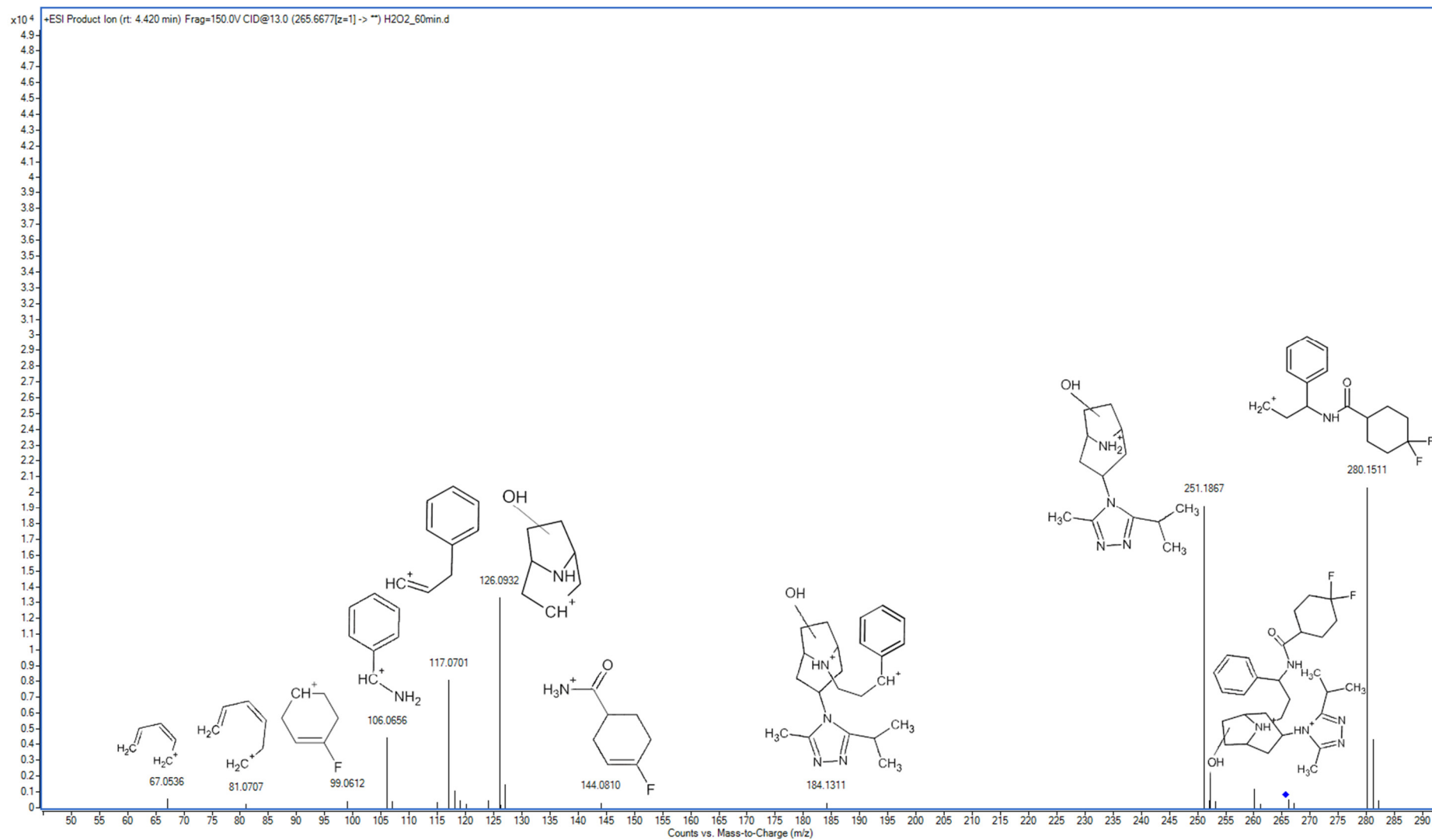


Figure S14. MS/MS spectrum and fragmentation pattern of double-charged TP7.

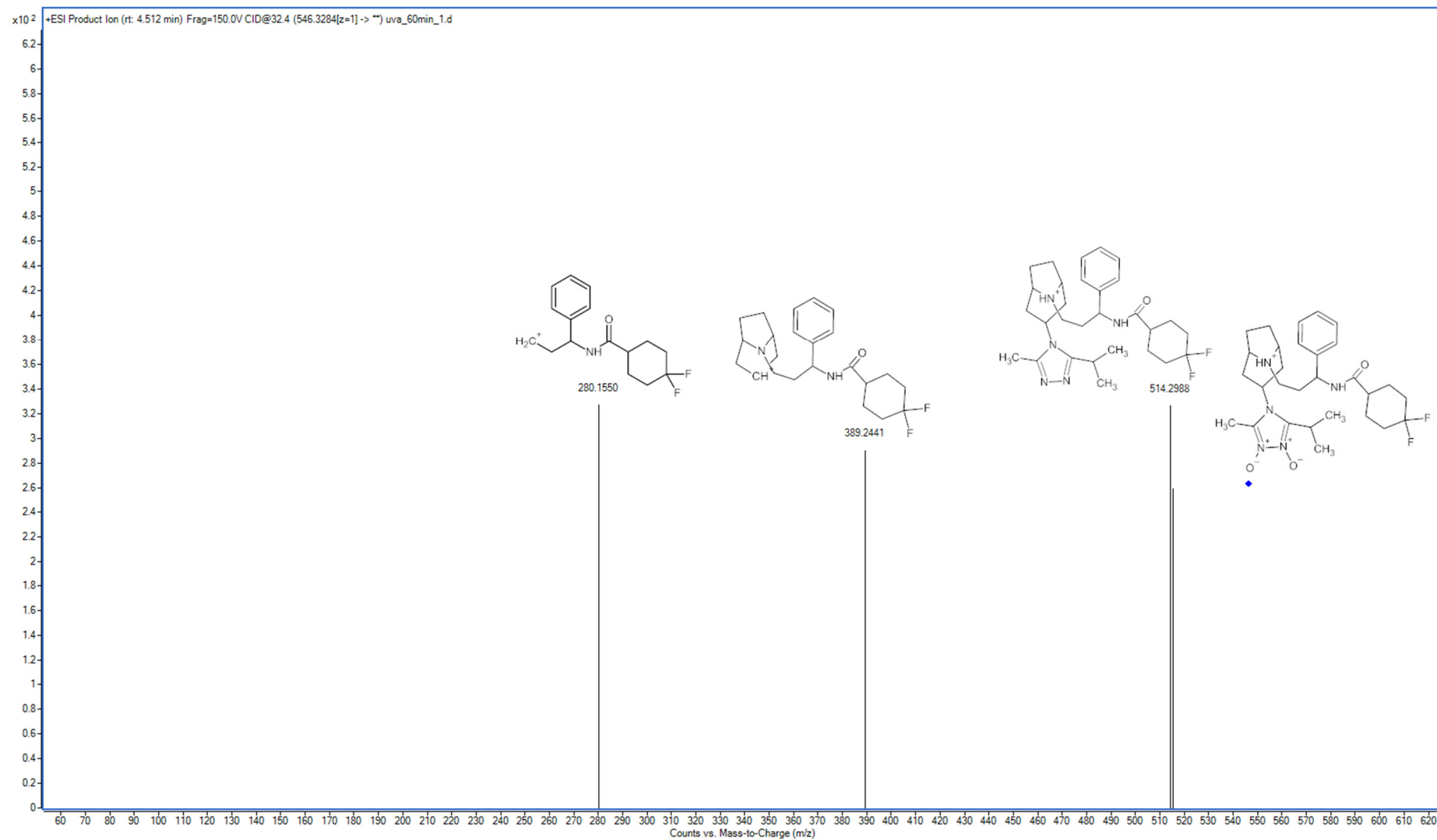


Figure S15. MS/MS spectrum and fragmentation pattern of single-charged TP8.

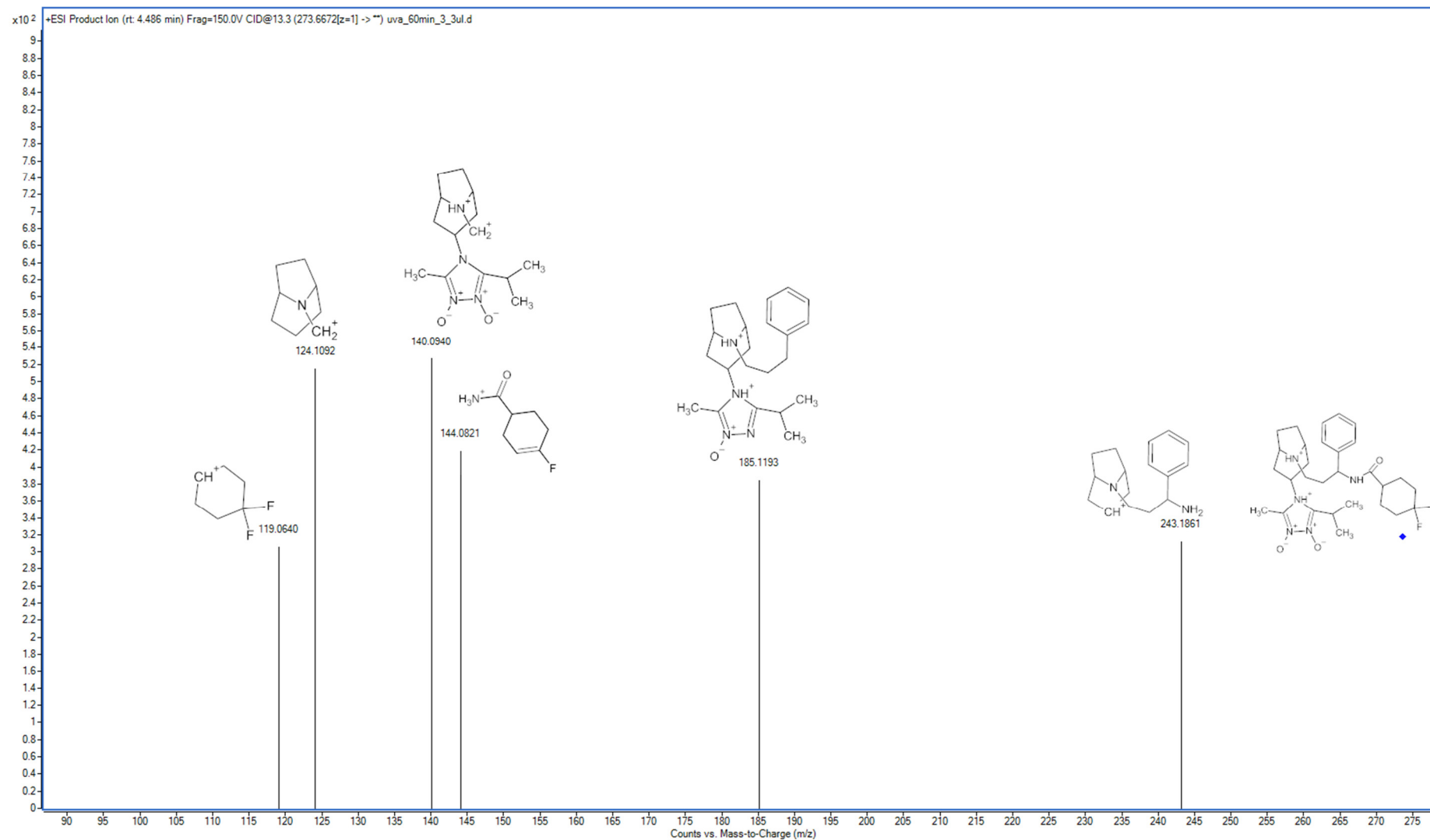


Figure S16. MS/MS spectrum and fragmentation pattern of double-charged TP8.

