

Supporting Information

Polyaromatic *bis*(indolyl)methane derivatives with antiproliferative and antiparasitic activity

Raquel C. R. Gonçalves^{1,2}, Pablo Peñalver³, Susana P. G. Costa¹, Juan C. Morales³ and Maria Manuela M. Raposo^{1*}

¹Centre of Chemistry, University of Minho, Campus of Gualtar, 4710-057 Braga, Portugal.

²Advanced (Magnetic) Theranostic Nanostructures Lab, International Iberian Nanotechnology Laboratory, Av. Mestre José Veiga s/n, 4715-330 Braga, Portugal.

³Instituto de Parasitología y Biomedicina López Neyra, CSIC, PTS Granada, Avenida del Conocimiento, 17, 18016, Armilla, Granada, Spain.

*Correspondence: mfox@quimica.uminho.pt

Figure S1. ¹ H NMR spectra of BIM 2a in DMSO- <i>d</i> ₆	2
Figure S2. ¹³ C NMR spectra of BIM 2a in DMSO- <i>d</i> ₆	3
Figure S3. ¹ H NMR spectra of BIM 2b in DMSO- <i>d</i> ₆	4
Figure S4. ¹³ C NMR spectra of BIM 2b in DMSO- <i>d</i> ₆	5
Figure S5. ¹ H NMR spectra of BIM 2c in DMSO- <i>d</i> ₆	6
Figure S6. Normalized UV-visible absorption and emission spectra of BIM 2a in ACN solution.....	7
Figure S7. Dose-response curve of BIM 2a-c in <i>T. brucei</i> parasites.....	7
Figure S8. Dose-response curve of BIM 2a-c in <i>L. major</i> parasites.....	8
Figure S9. Dose-response curve of BIM 2a-c in HeLa cells.....	8
Figure S10. Dose-response curve of BIM 2a-c in HT-29 cells.....	9
Figure S11. Cell viability of <i>T. brucei</i> , <i>L. major</i> , HeLa, and HT-29 cells treated with DMSO 1%.....	9

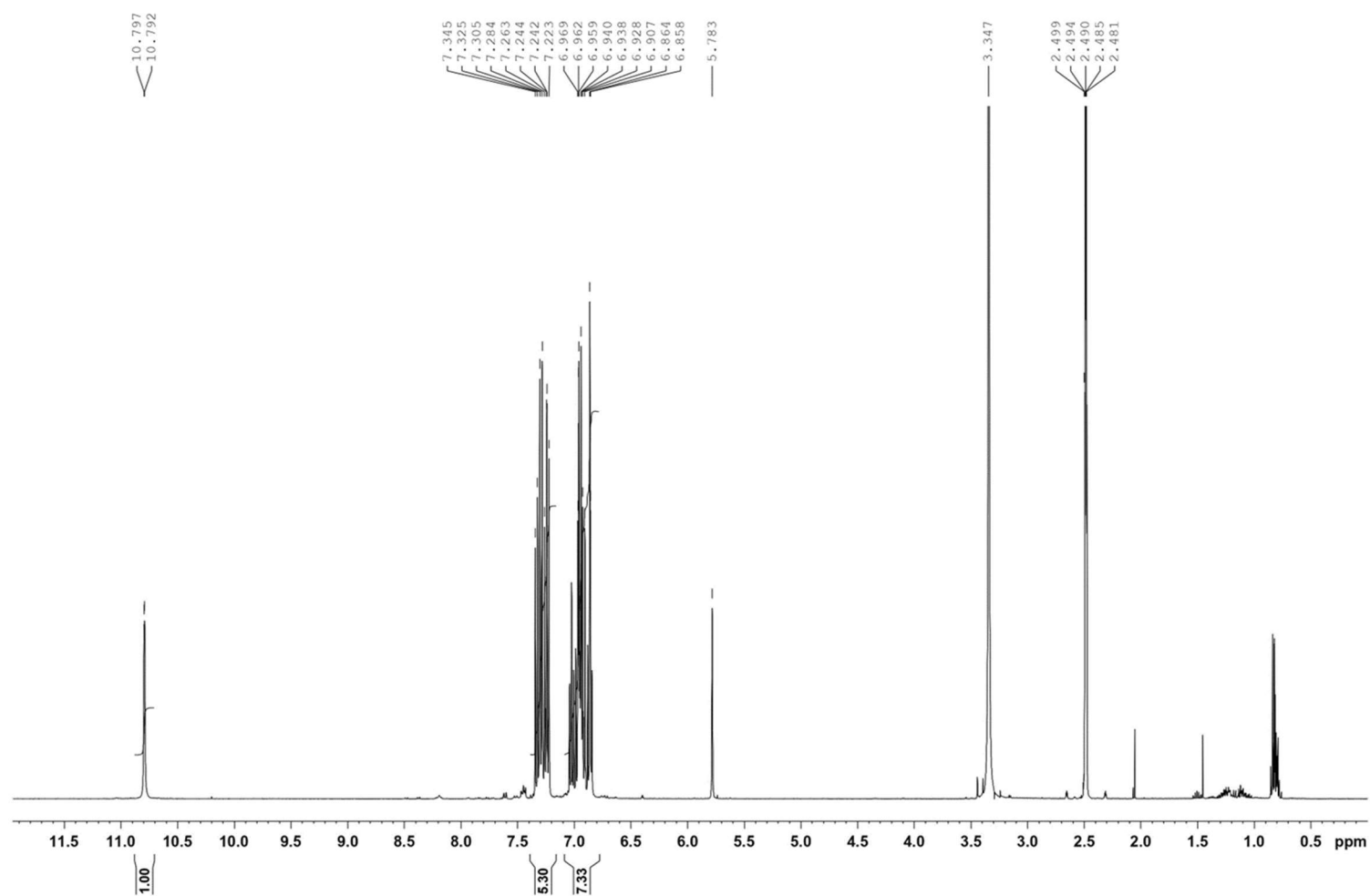


Figure S1. ¹H NMR spectra of BIM 2a in DMSO-*d*₆.

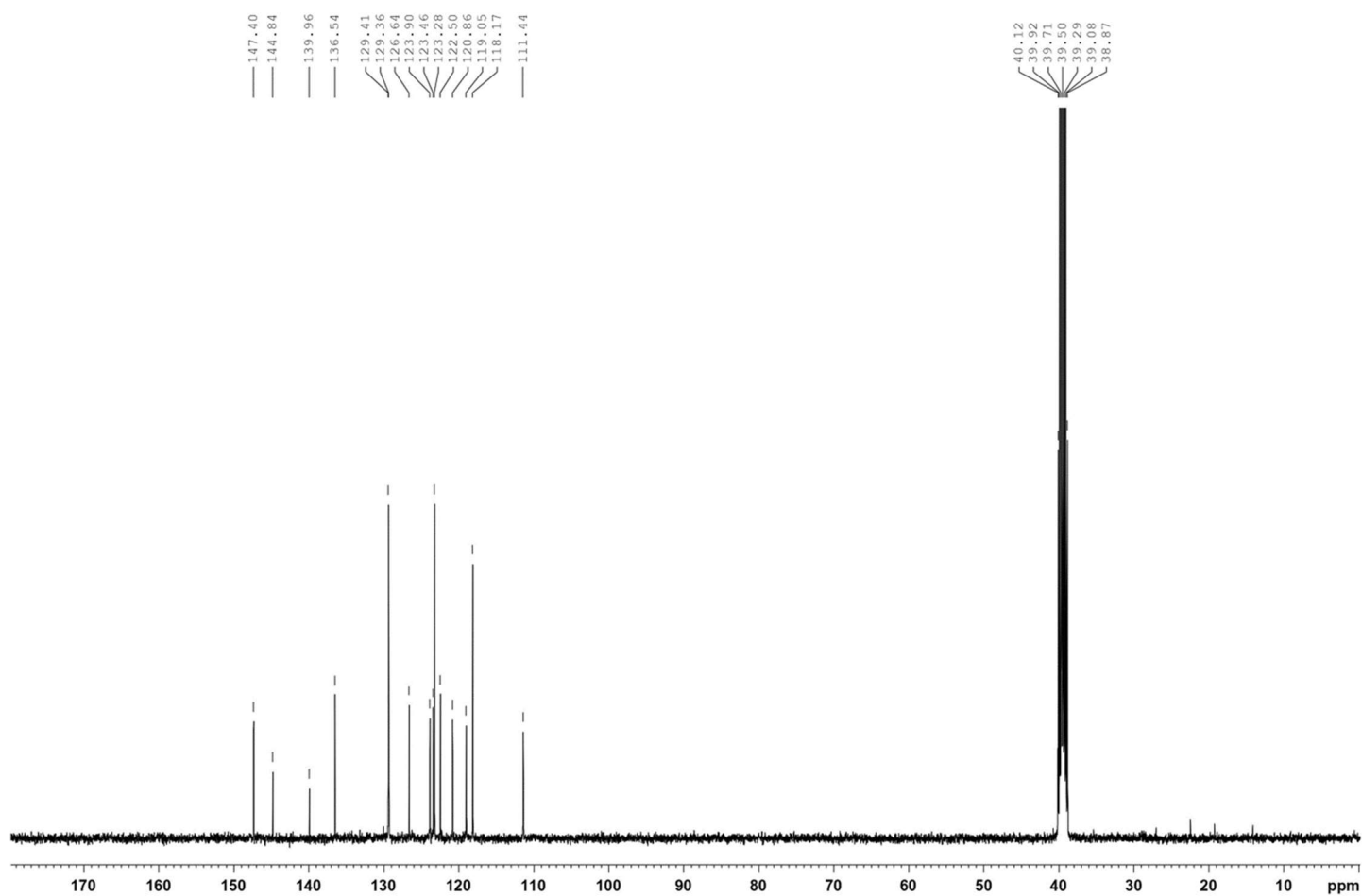


Figure S2. ^{13}C NMR spectra of BIM 2a in $\text{DMSO-}d_6$.

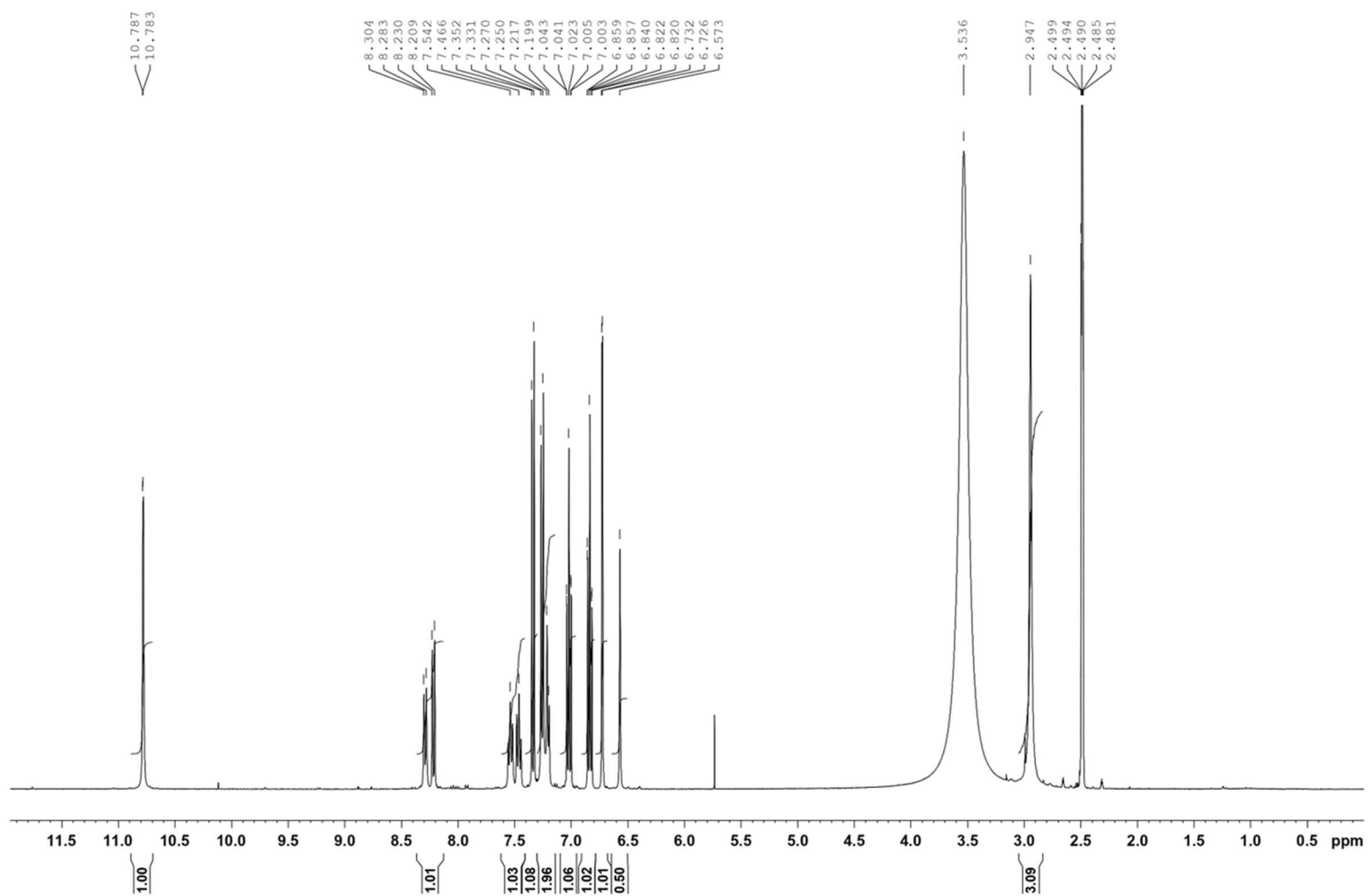


Figure S3. ¹H NMR spectra of BIM **2b** in DMSO-*d*₆.

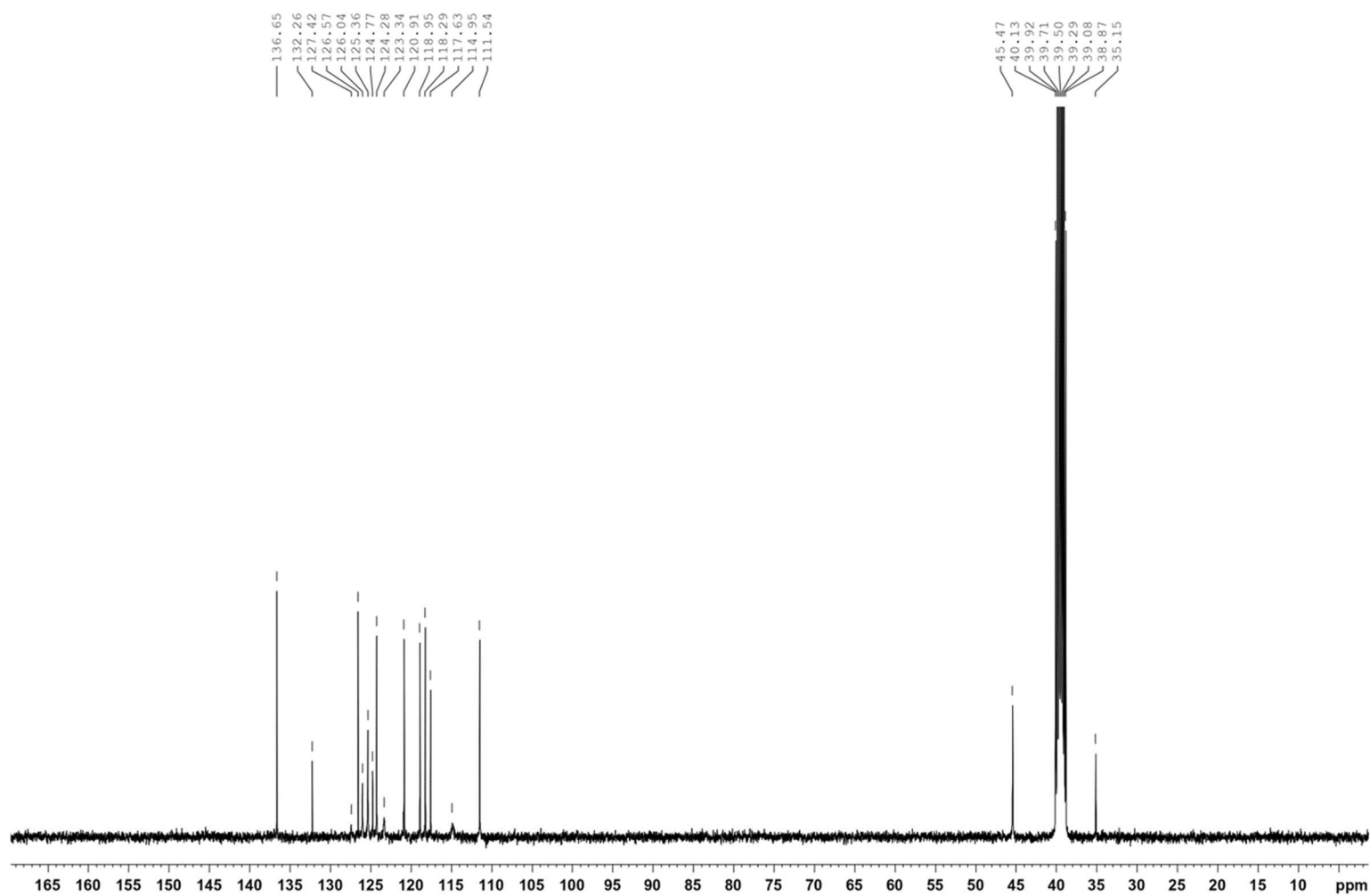


Figure S4. ^{13}C NMR spectra of BIM **2b** in $\text{DMSO}-d_6$.

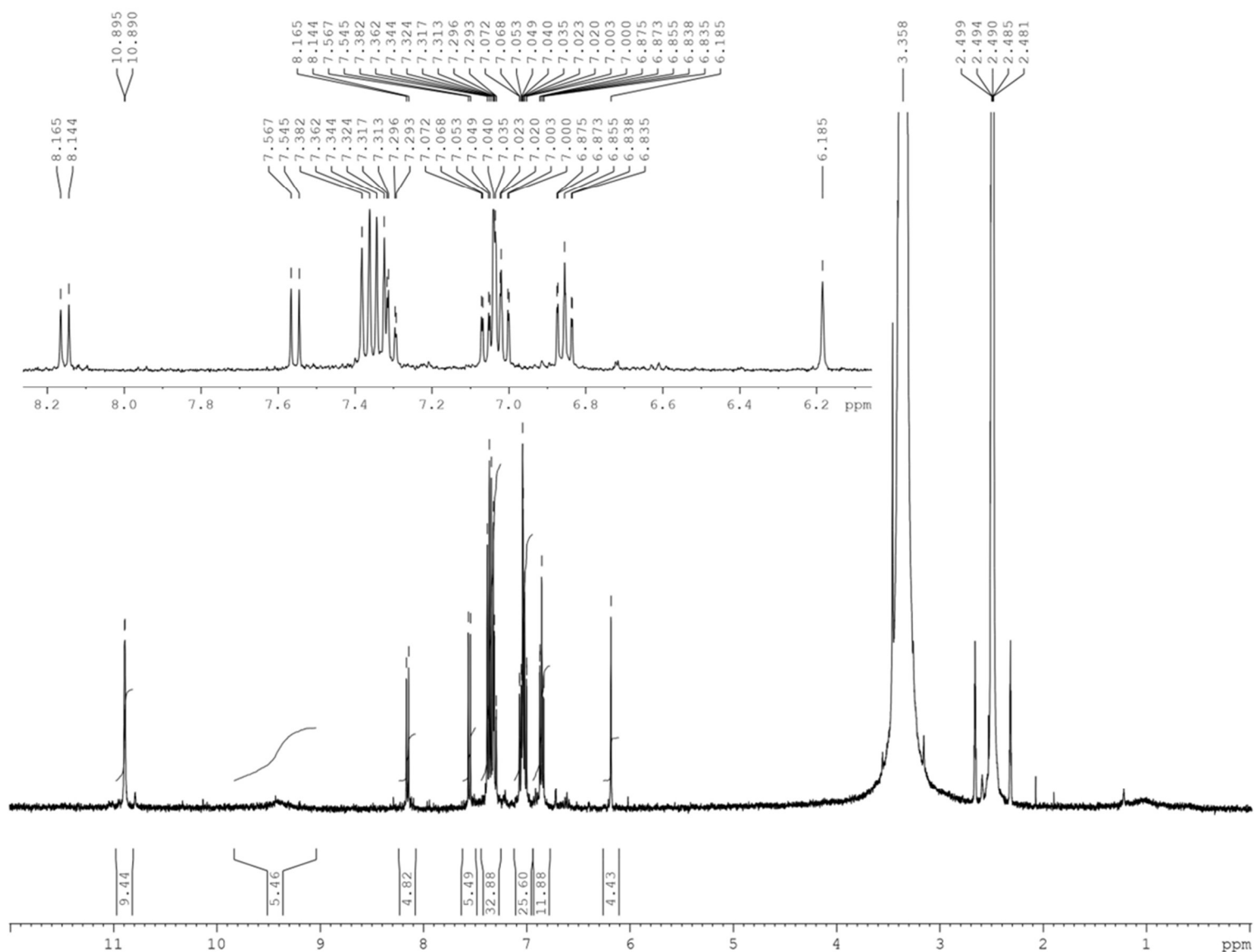


Figure S5. ^1H NMR spectra of BIM **2c** in $\text{DMSO-}d_6$.

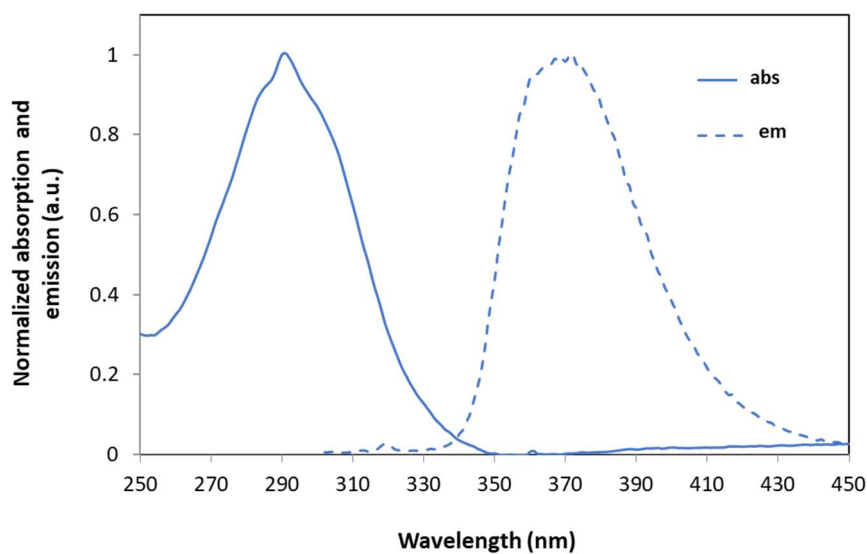


Figure S6. Normalized UV-visible absorption and emission spectra of BIM 2a in ACN solution.

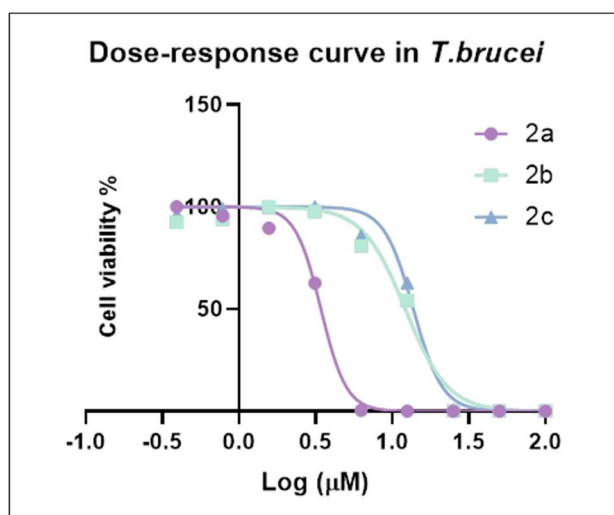


Figure S7. Dose-response curve of BIM 2a-c in *T. brucei* parasites.

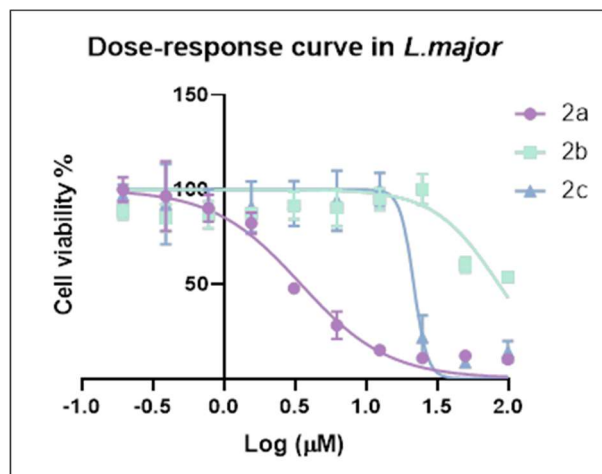


Figure S8. Dose-response curve of BIM **2a-c** in *L. major* parasites.

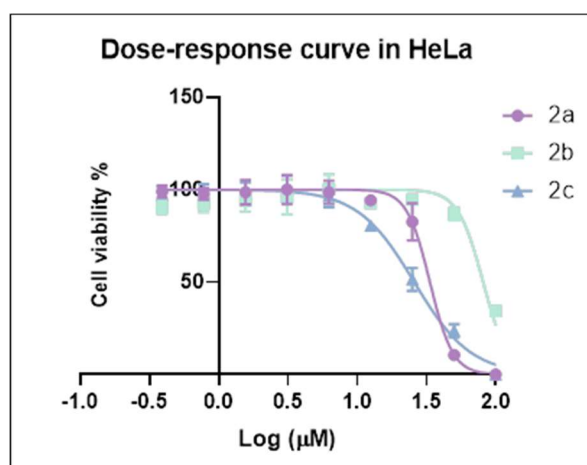


Figure S9. Dose-response curve of BIM **2a-c** in HeLa cells.

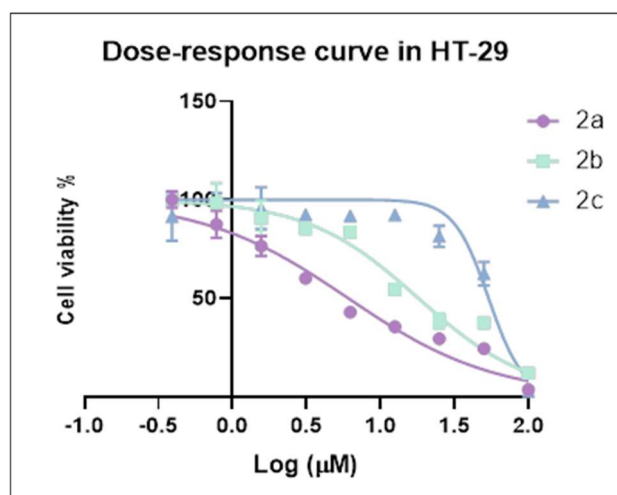


Figure S10. Dose-response curve of BIM 2a-c in HT-29 cells.

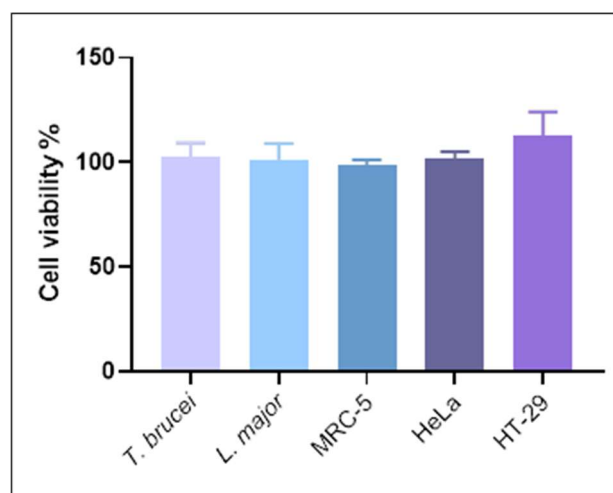


Figure S11. Cell viability of *T. brucei*, *L. major*, HeLa, and HT-29 cells treated with DMSO 1%.