

***Rindera graeca* (A. DC.) Boiss. & Heldr. (Boraginaceae) in vitro cultures targeting lithospermic acid B and rosmarinic acid production**

Katarzyna Sykłowska-Baranek ^{1*}, Małgorzata Gawel ¹, Łukasz Kuźma ², Beata Wileńska ^{3,4}, Mateusz Kawka ¹, Małgorzata Jeziorek ¹, Konstantia Graikou ⁵, Ioanna Chinou ⁵, Ewa Szyszko ¹, Piotr Stępień ¹, Patryk Zakrzewski ¹ and Agnieszka Pietrosiuk ¹

¹ ¹Department of Pharmaceutical Biology, Faculty of Pharmacy, Medical University of Warsaw, 1 Banacha St., 02-097 Warsaw, Poland; mgawel1@wum.edu.pl (M.G.); mateusz.kawka@wum.edu.pl (M.K.); mjeziorek@wum.edu.pl (M.J.); pryzmik16@op.pl (E.S.); piotrste1@wp.pl (P.S.); patrol20013@gmail.com (P.Z.); agnieszka.pietrosiuk@wum.edu.pl (A.P.)

² Department of Biology and Pharmaceutical Botany, Faculty of Pharmacy, Medical University of Łódź, 1 Muszyńskiego, 90-151 Łódź, Poland; lukasz.kuzma@umed.lodz.pl

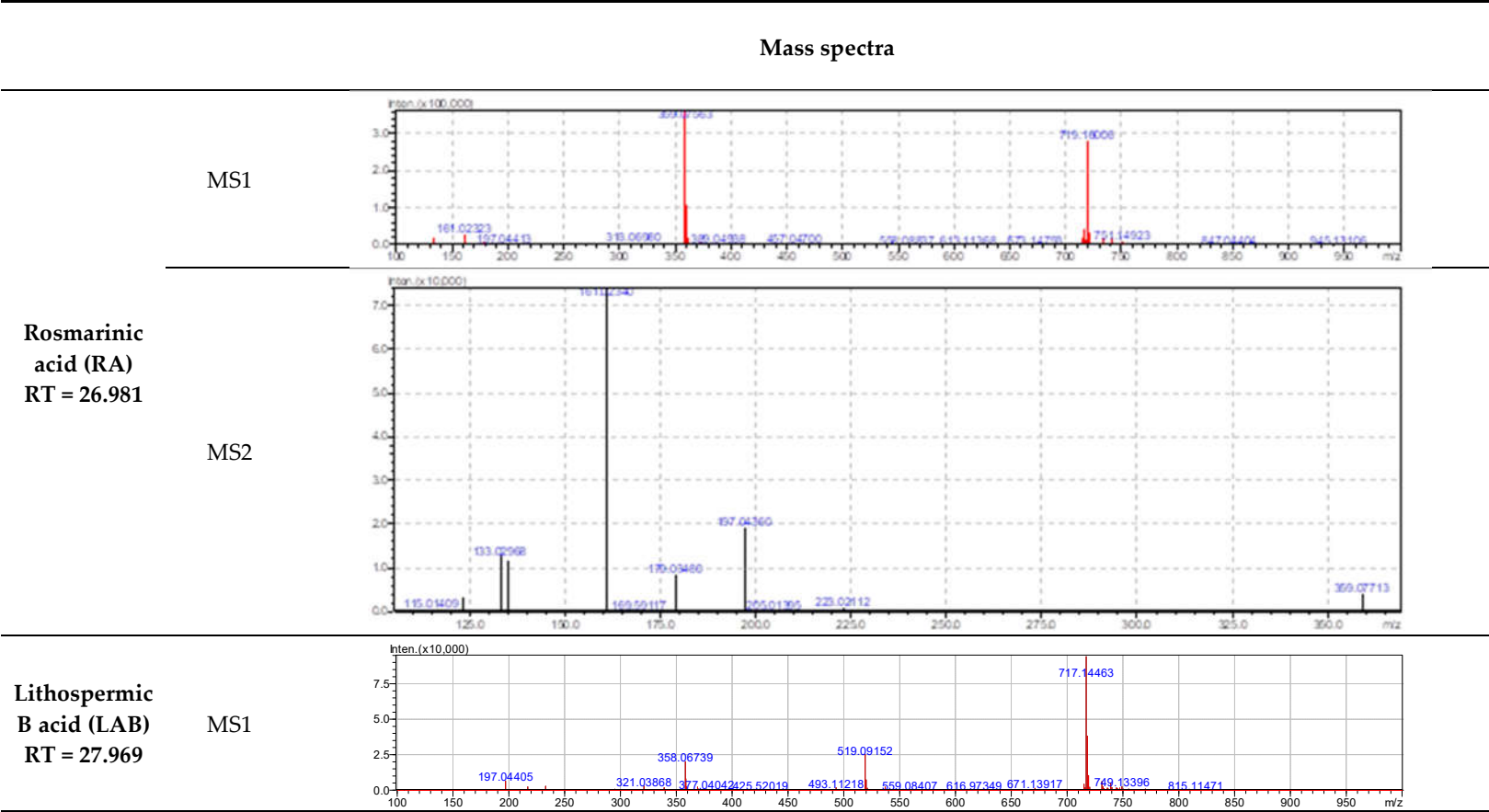
³ Faculty of Chemistry, University of Warsaw, 1 Pasteura St., 02-093 Warsaw, Poland;

⁴ Biological and Chemical Research Centre, 101 Żwirki i Wigury St., 02-097 Warsaw, Poland; bwilenska@chem.uw.edu.pl

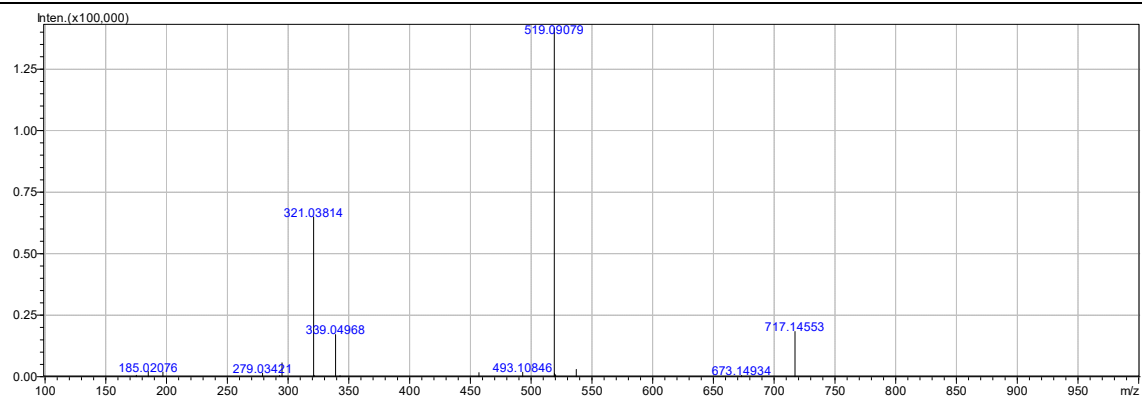
⁵ Laboratory of Pharmacognosy and Chemistry of Natural Products, Faculty of Pharmacy, National and Kapodistrian University of Athens, Panepistimiopolis, 15771 Athens, Greece; kgraikou@pharm.uoa.gr (K.G.); ichinou@pharm.uoa.gr (I.C.)

* Correspondence: katarzyna.syklowska-baranek@wum.edu.pl

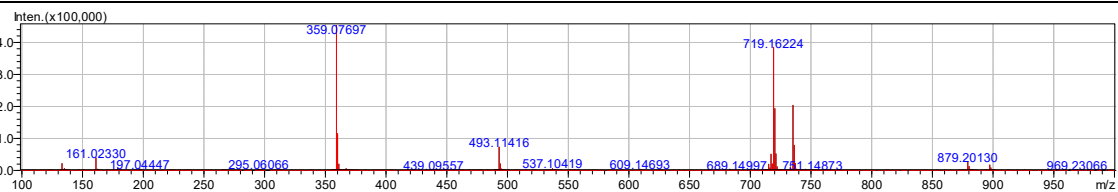
Table S4. Mass spectra of rosmarinic and lithospermic B acids detected in examined extracts of shoot and root *Rindera graeca* lines.



MS2

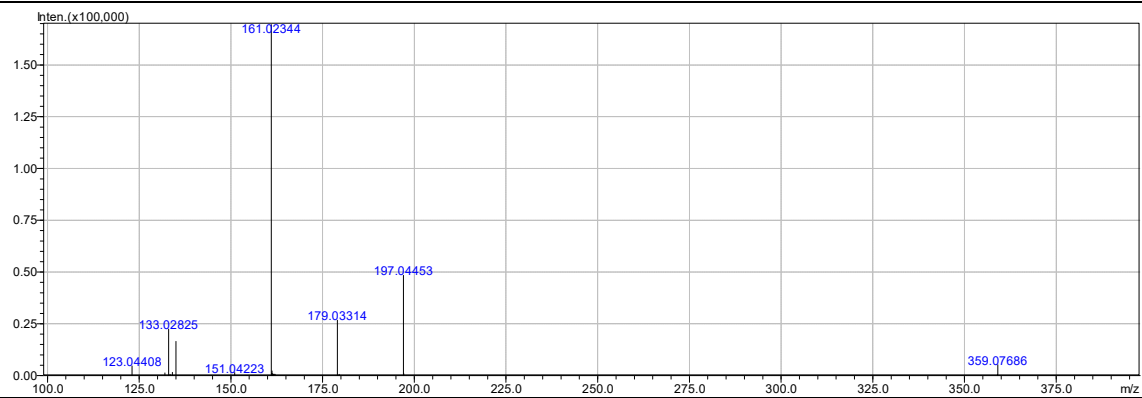


RA MS1

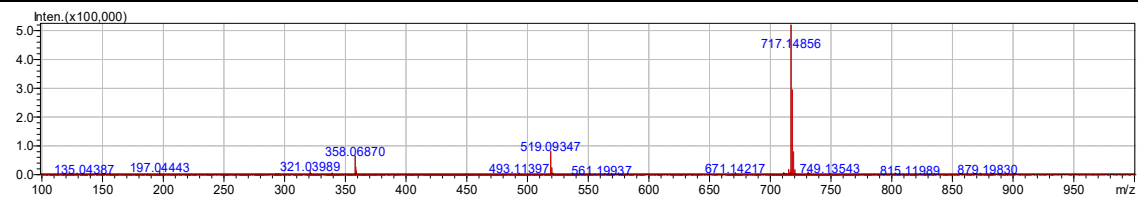


RgS
shoots

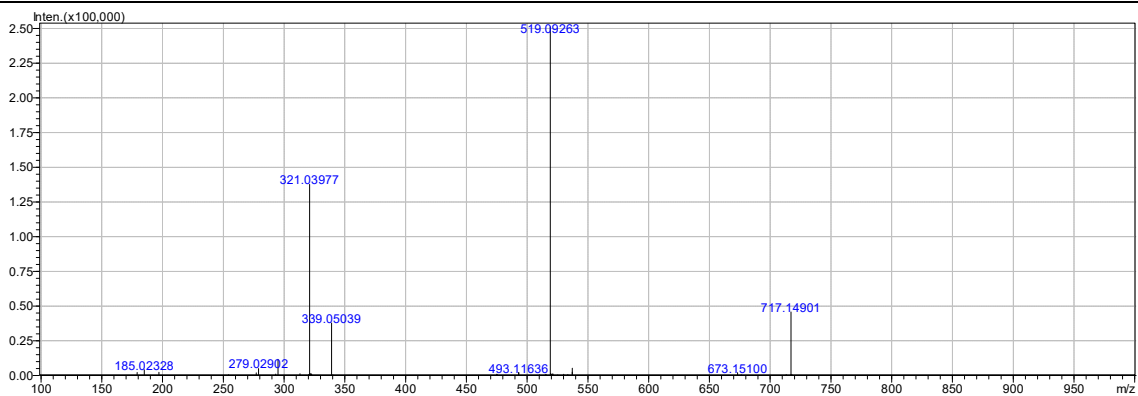
RA MS2



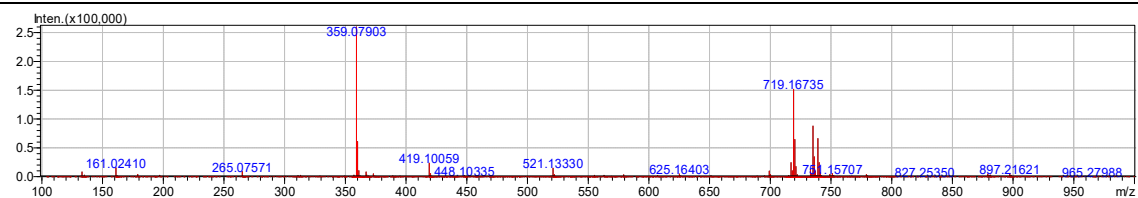
LAB MS1



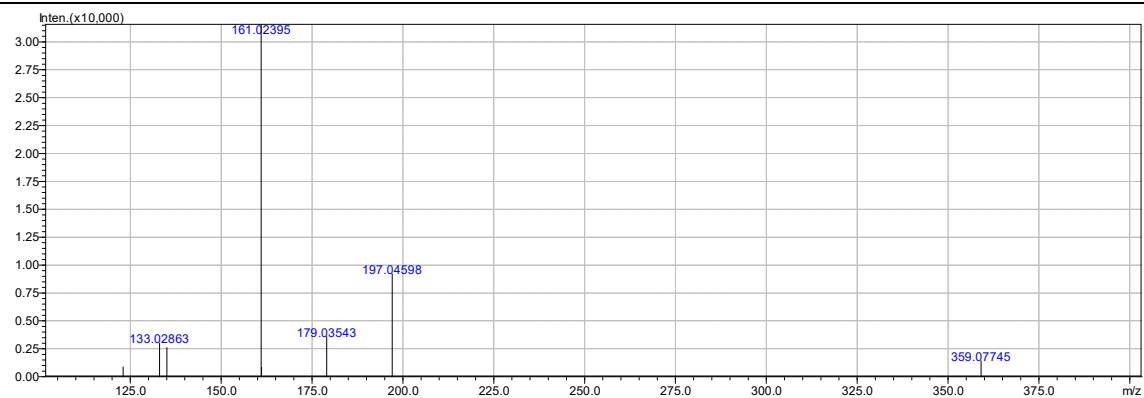
LAB MS2



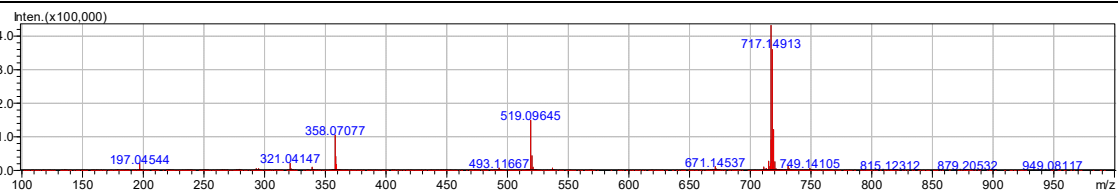
RgAR shoots RA MS1



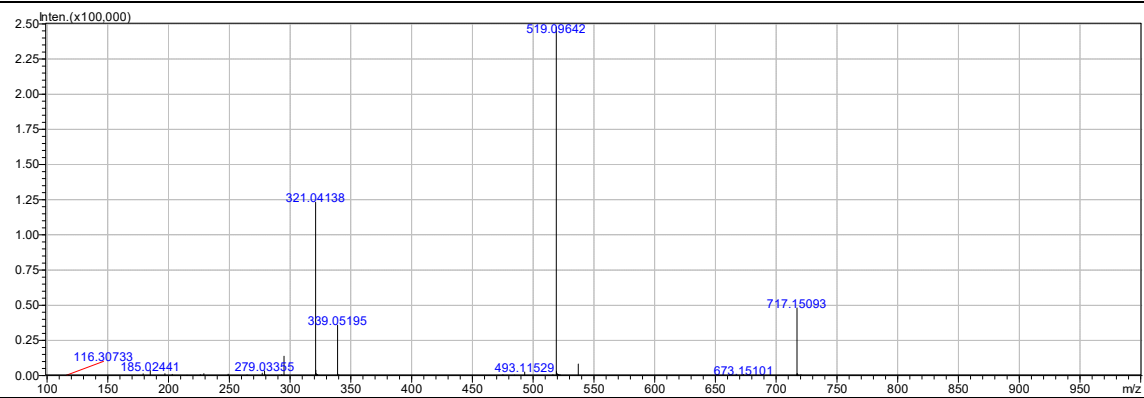
RA MS2

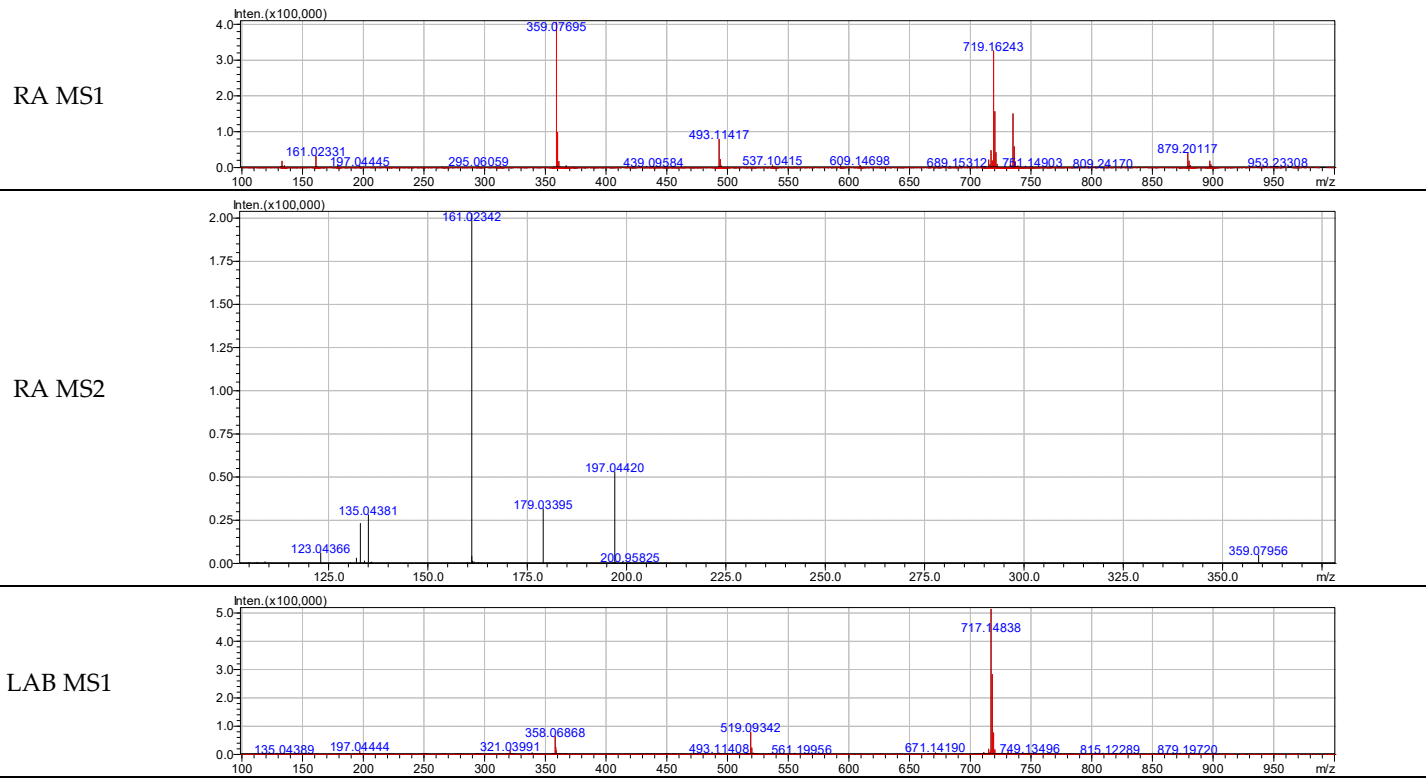


LAB MS1

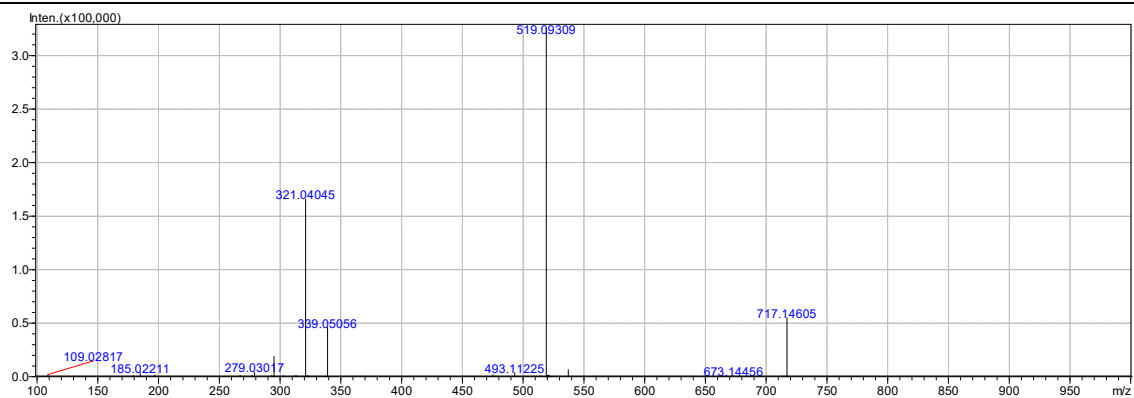


LAB MS2

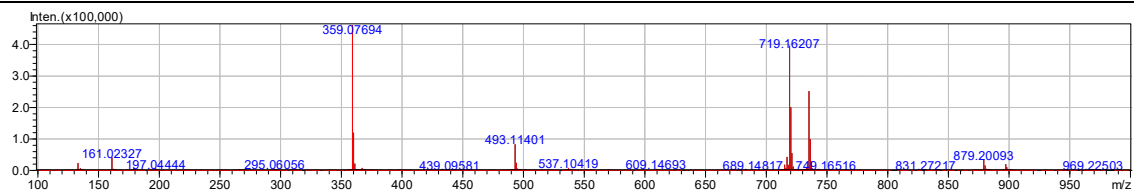




LAB MS2

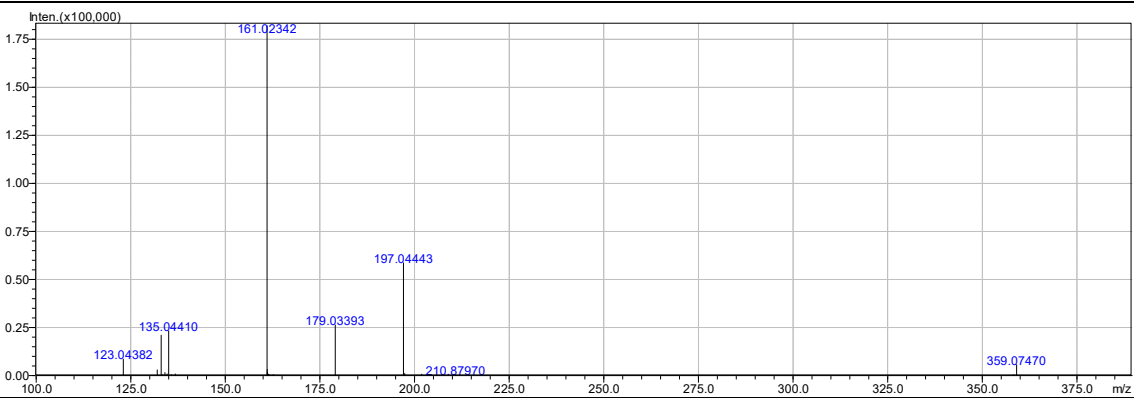


RA MS1

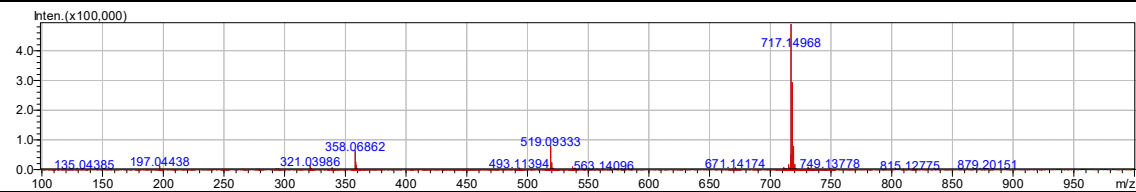


RgTR7
shoots

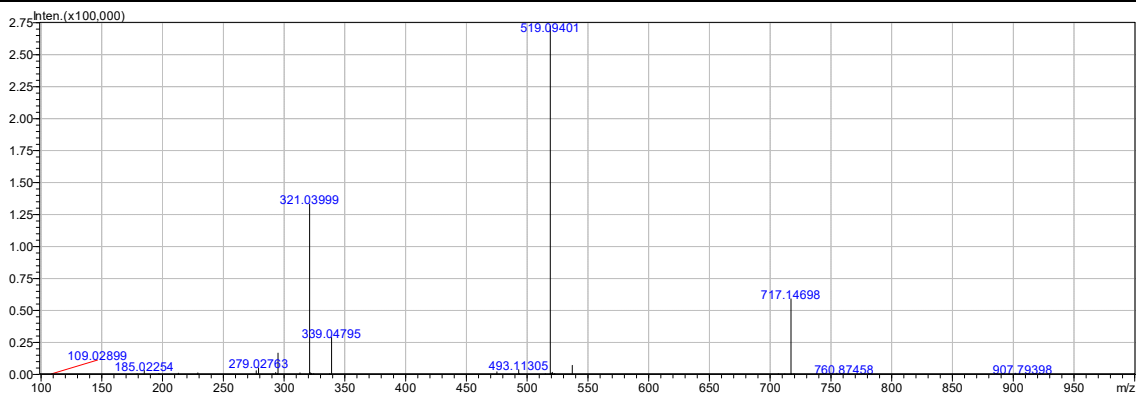
RA MS2



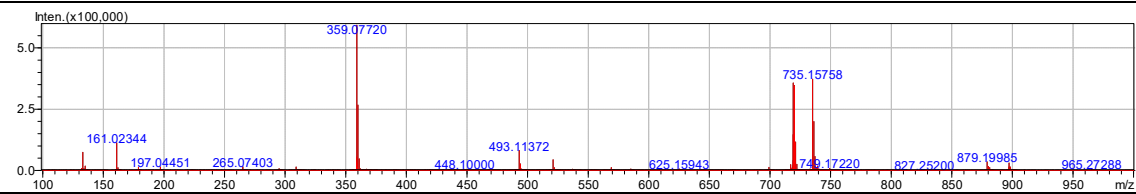
LAB MS1



LAB MS2

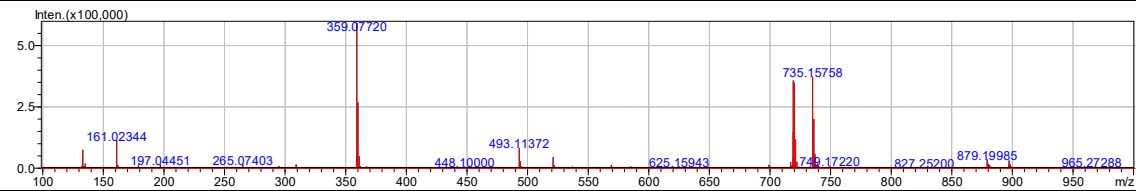


RA MS1

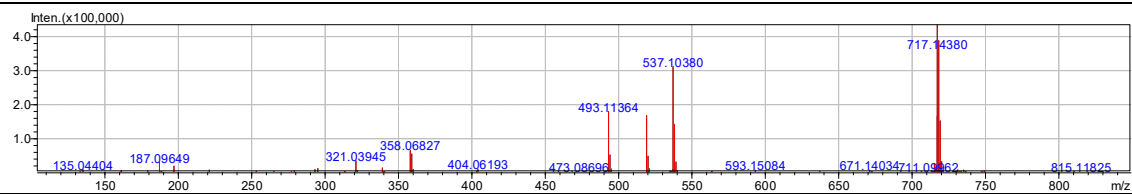


RgTR17
shoots

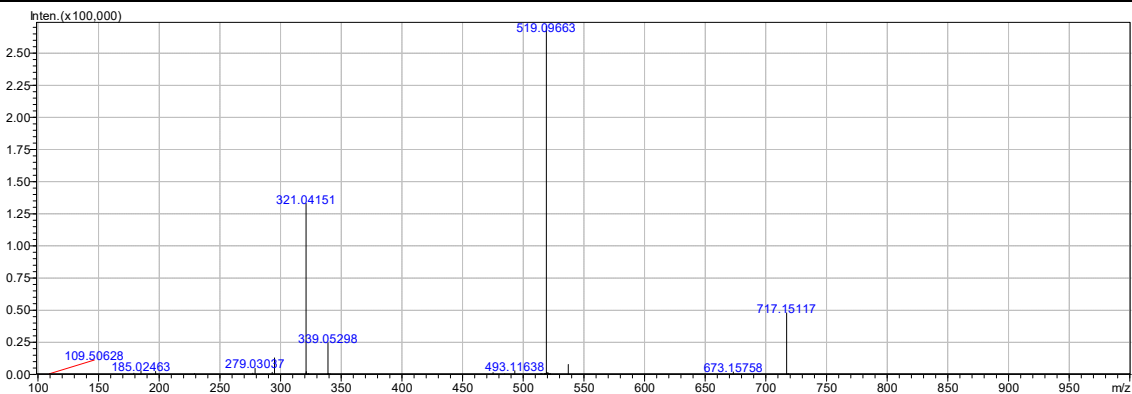
RA MS2



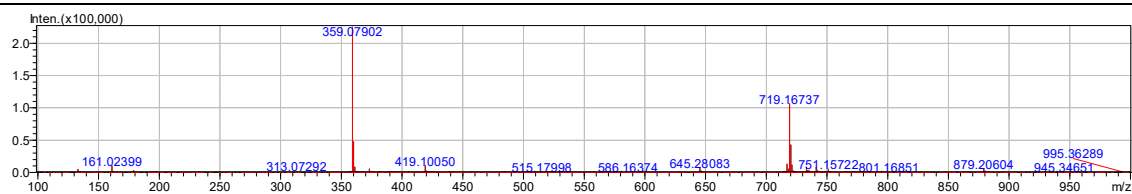
LAB MS1



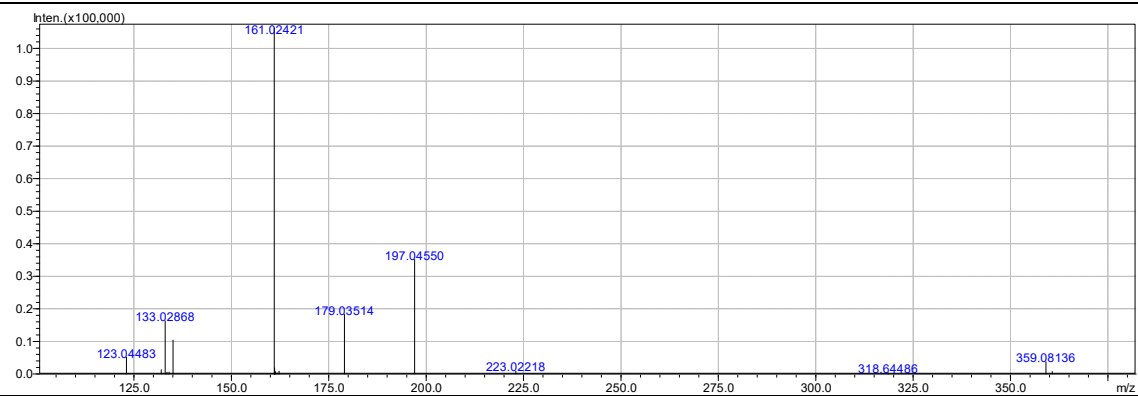
LAB MS2



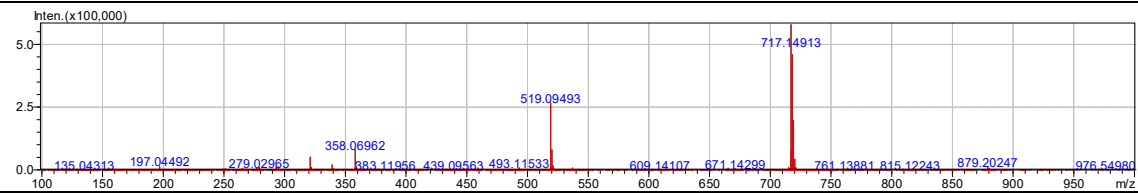
RgAR roots RA MS1



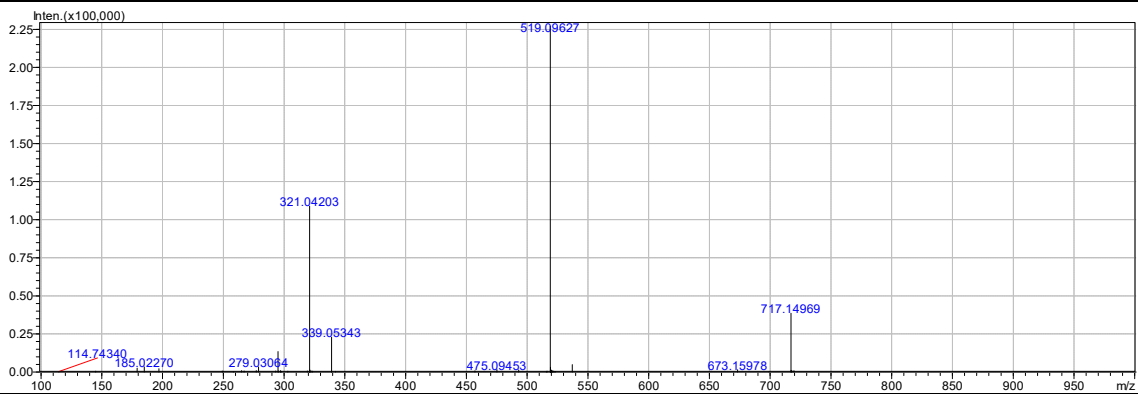
RA MS2



LAB MS1

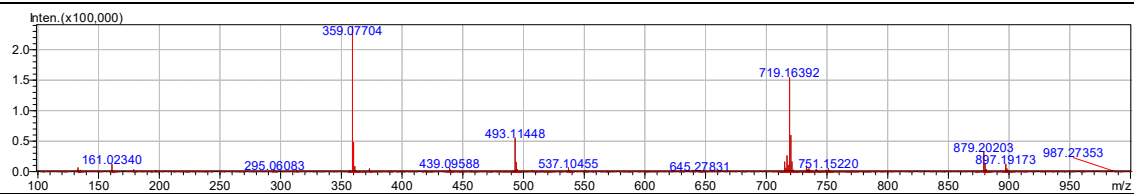


LAB MS2

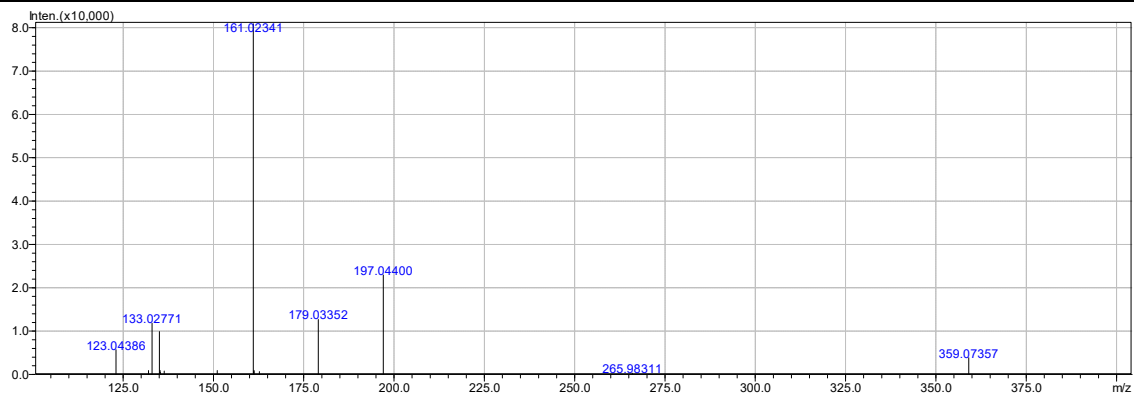


RgCR/NOA
roots

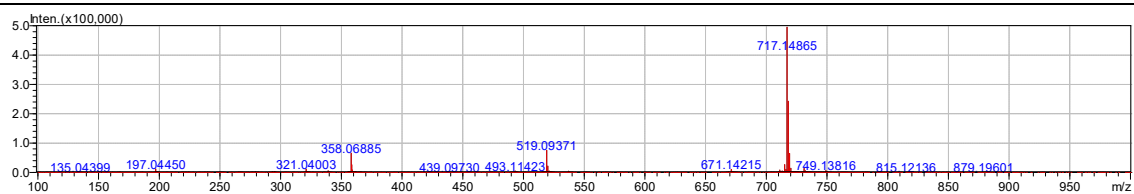
RA MS1



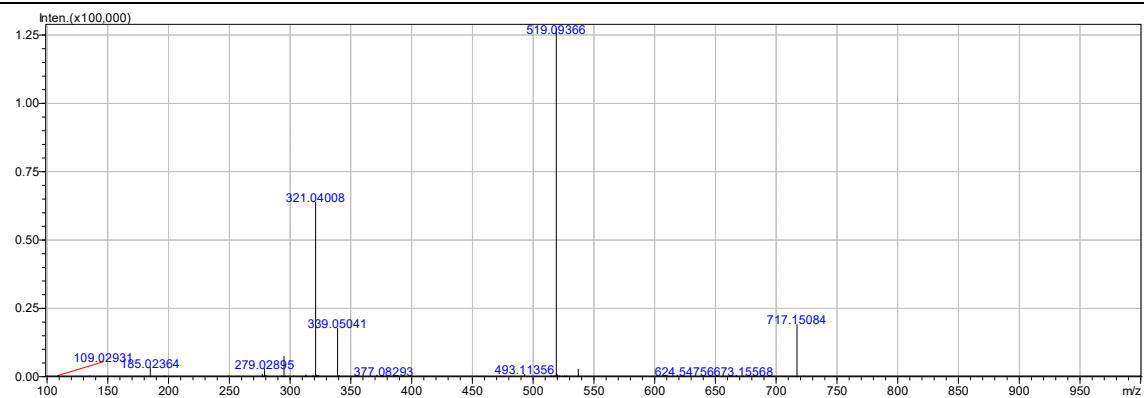
RA MS2



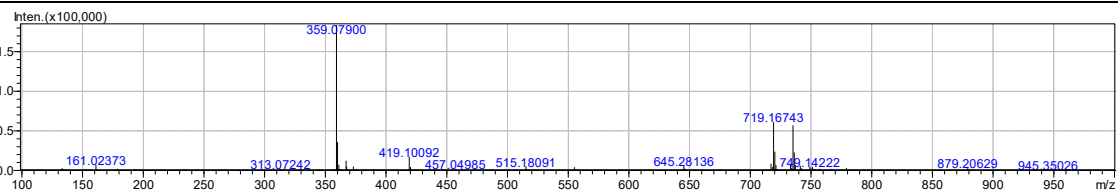
LAB MS1



LAB MS2

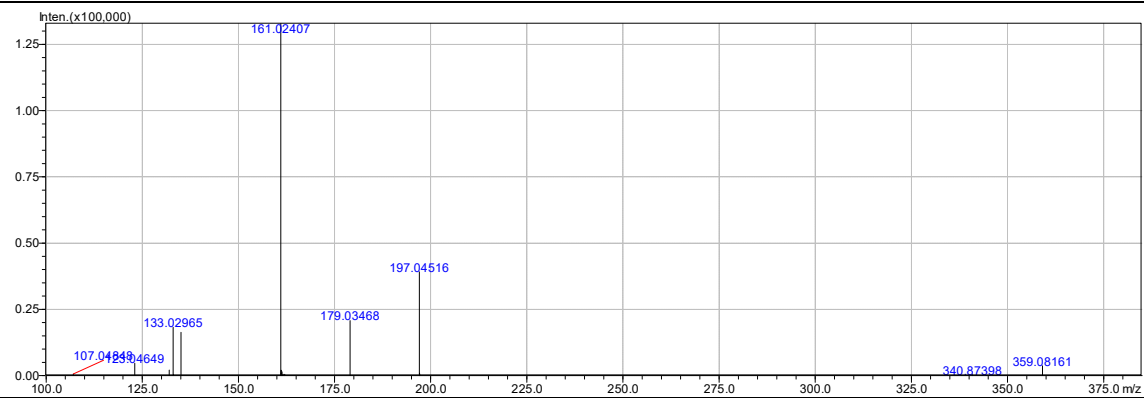


RA MS1

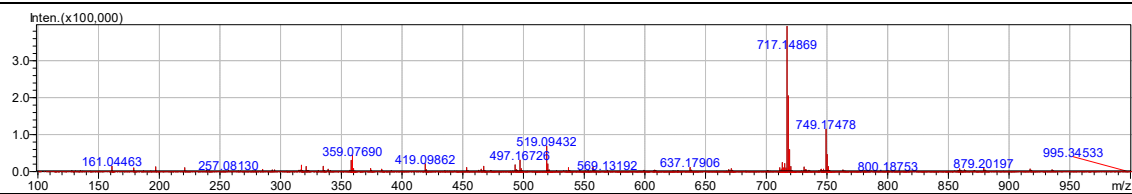


RgTR7 roots

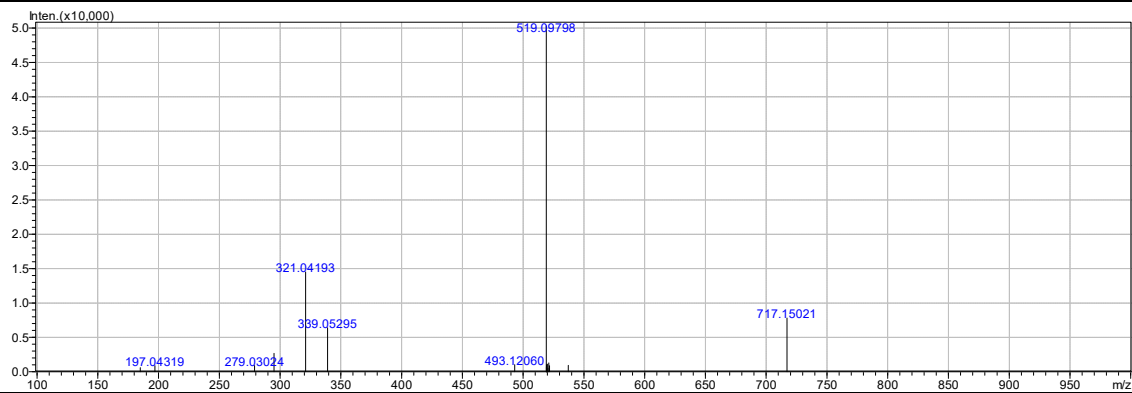
RA MS2



LAB MS1

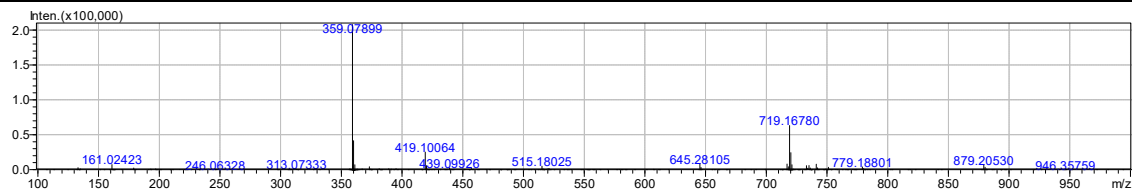


LAB MS2

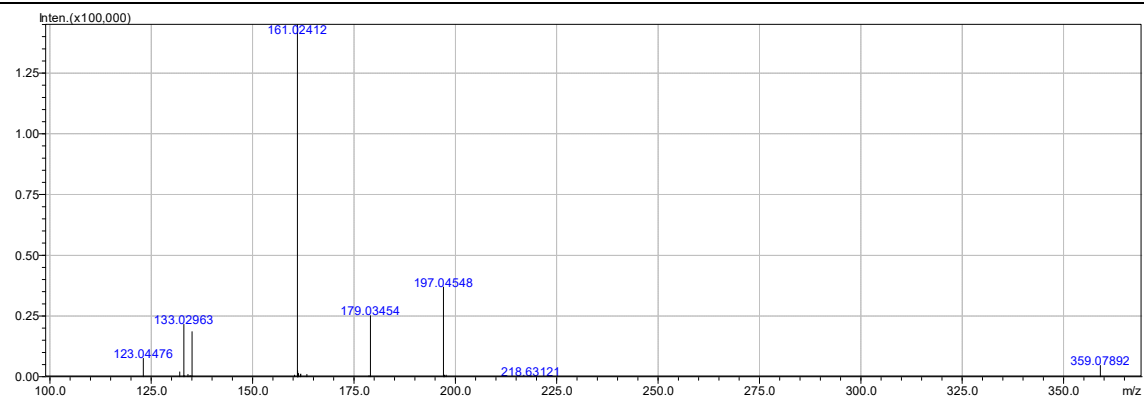


RgTR17
roots

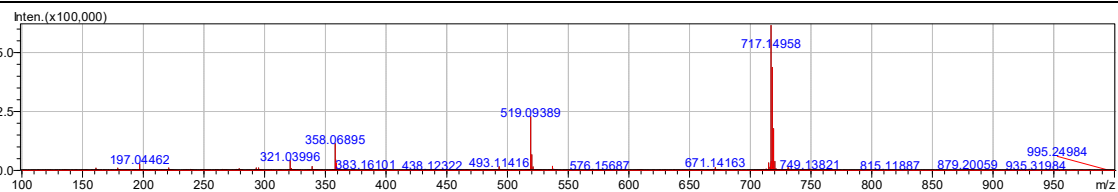
RA MS1



RA MS2



LAB MS1



LAB MS2

