

# Supplementary materials

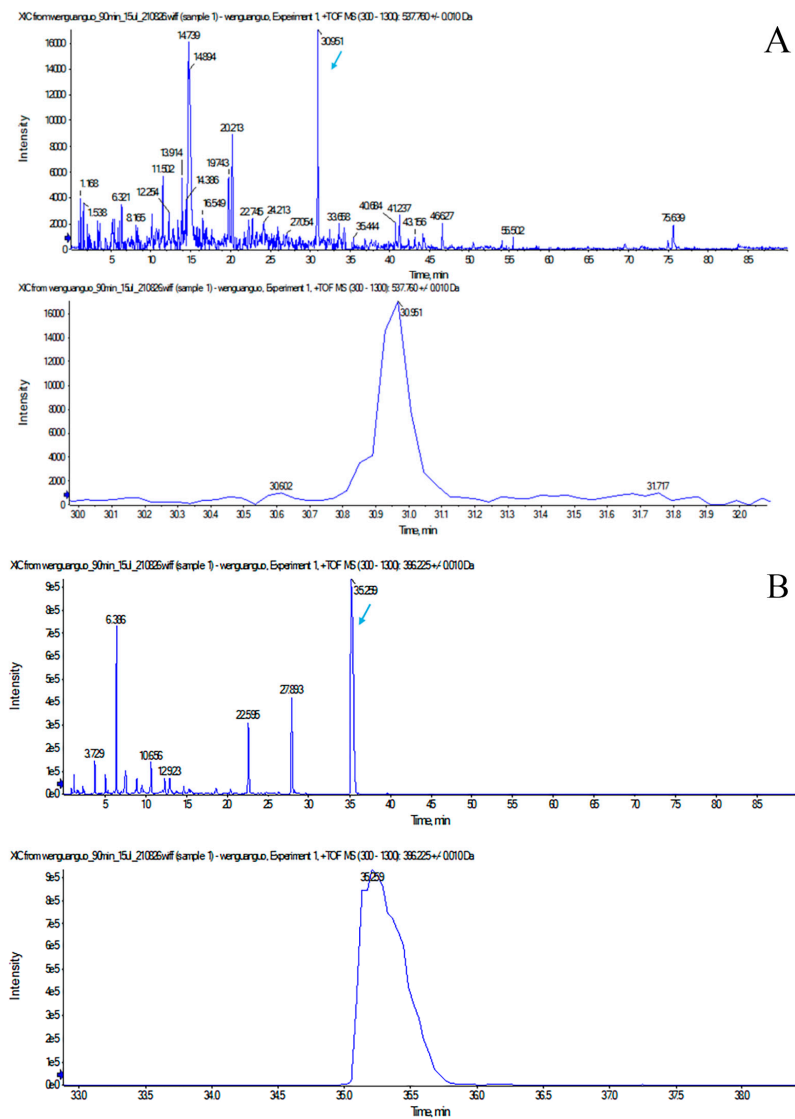
## Supplemental Table S1

Table1 S1 Analysis of L9 (3)<sup>4</sup> test results

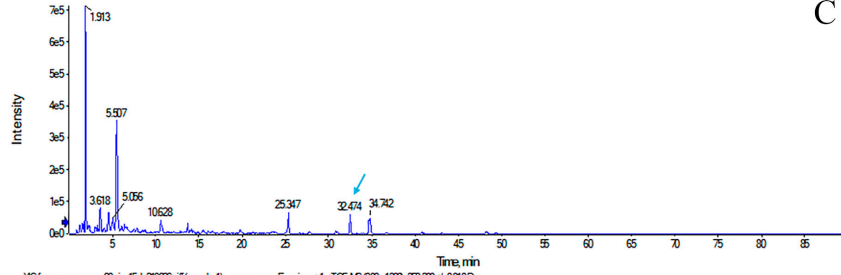
Test No.	Factors				Hydrolysis degree (%)	ACE inhibition rate (%)
	A	B	C	D		
	Hydrolysis	Hydrolysis	Amount of	Hydrolysis		
	time	temperature	enzyme added	pH		
1	1	1	1	1	8.33	87.74
2	1	2	2	2	11.62	96.78
3	1	3	3	3	6.53	99.28
4	2	1	2	3	8.21	98.33
5	2	2	3	1	12.52	97.65
6	2	3	1	2	9.17	96.65
7	3	1	3	2	10.02	98.32
8	3	2	1	3	10.33	98.31
9	3	3	2	1	11.67	90.04
Hydrolysis degree (%)						
K <sub>1</sub>	26.48	26.56	27.83	32.52		
K <sub>2</sub>	29.90	34.47	31.50	30.81		
K <sub>3</sub>	32.02	27.37	29.07	25.07		
k <sub>1</sub>	8.83	8.85	9.28	10.84		
k <sub>2</sub>	9.97	11.49	10.50	10.27		
k <sub>3</sub>	10.67	9.12	9.69	8.36		
R	1.14	2.64	1.22	2.48		
Optimal value	A <sub>2</sub>	B <sub>2</sub>	C <sub>3</sub>	D <sub>1</sub>		
ACE inhibition rate (%)						
K <sub>1</sub>	283.8	284.39	282.7	275.43		
K <sub>2</sub>	292.63	292.74	285.15	291.75		
K <sub>3</sub>	286.67	285.97	295.25	295.92		
k <sub>1</sub>	94.60	94.80	94.23	91.81		
k <sub>2</sub>	97.54	97.58	95.05	97.25		
k <sub>3</sub>	95.56	95.32	98.42	98.64		
R	2.94	2.78	4.18	6.83		

Optimal				
value	A <sub>1</sub>	B <sub>3</sub>	C <sub>3</sub>	D <sub>3</sub>

## Supplemental Figure

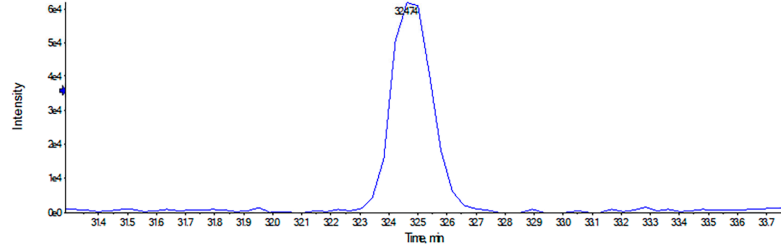


XC from vergunguo\_90min\_15J\_210226.wiff (sample 1) - vergunguo, Experiment 1, +TOF MS (300-1300), 368.200 +/- 0.010 Da

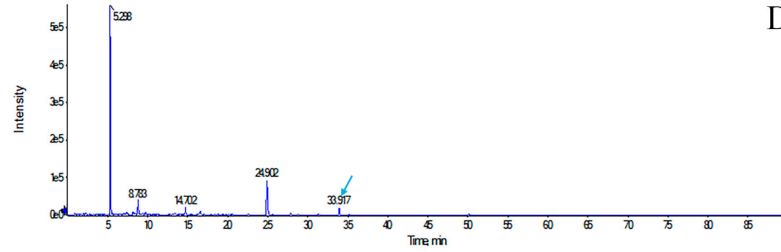


C

XC from vergunguo\_90min\_15J\_210226.wiff (sample 1) - vergunguo, Experiment 1, +TOF MS (300-1300), 368.200 +/- 0.010 Da

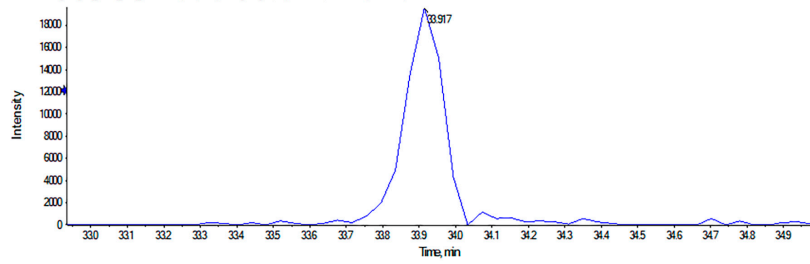


XC from vergunguo\_90min\_15J\_210226.wiff (sample 1) - vergunguo, Experiment 1, +TOF MS (300-1300), 415.700 +/- 0.010 Da

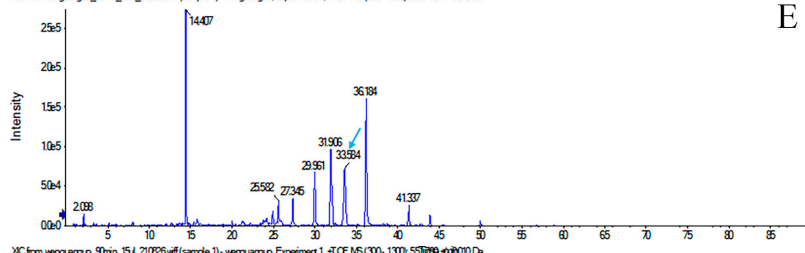


D

XC from vergunguo\_90min\_15J\_210226.wiff (sample 1) - vergunguo, Experiment 1, +TOF MS (300-1300), 415.700 +/- 0.010 Da

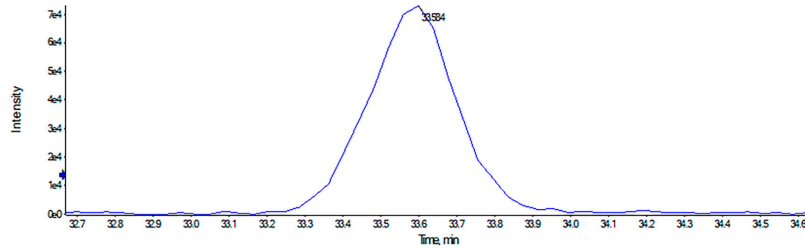


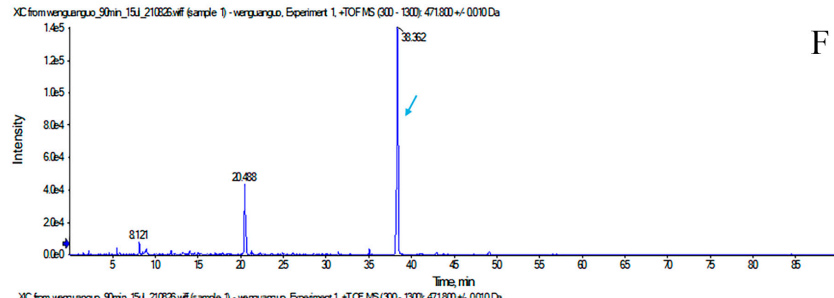
XC from vergunguo\_90min\_15J\_210226.wiff (sample 1) - vergunguo, Experiment 1, +TOF MS (300-1300), 551.730 +/- 0.010 Da



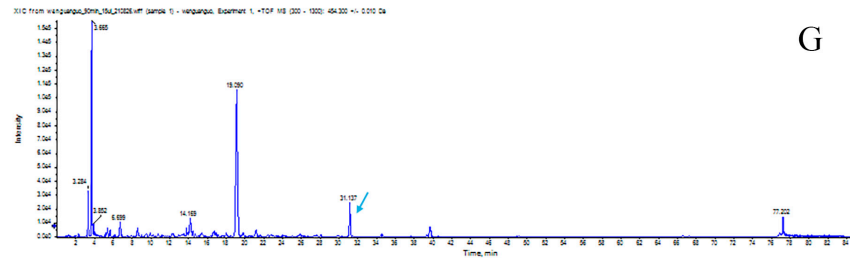
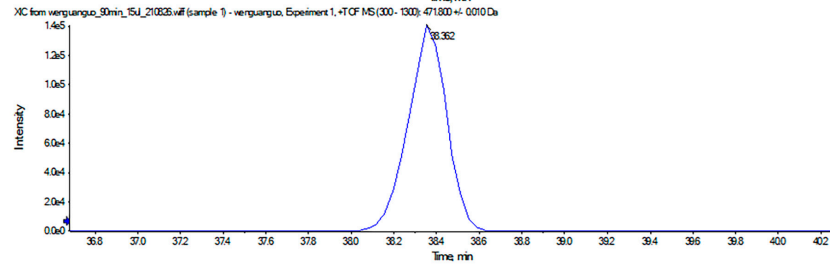
E

XC from vergunguo\_90min\_15J\_210226.wiff (sample 1) - vergunguo, Experiment 1, +TOF MS (300-1300), 551.730 +/- 0.010 Da

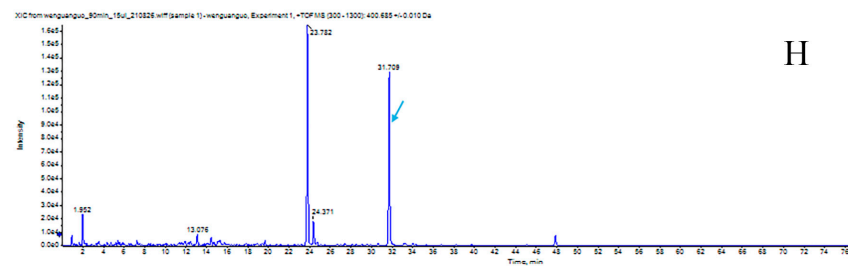
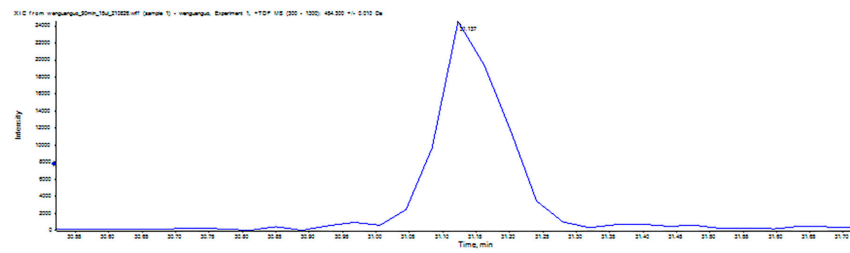




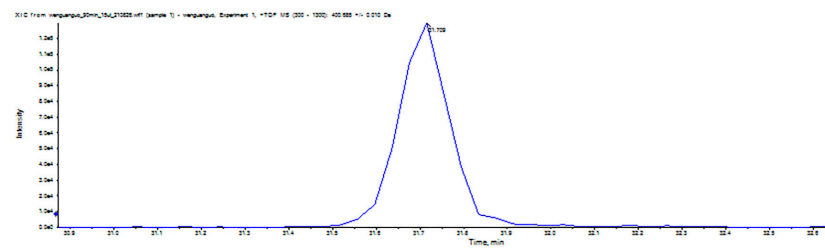
F



G



H



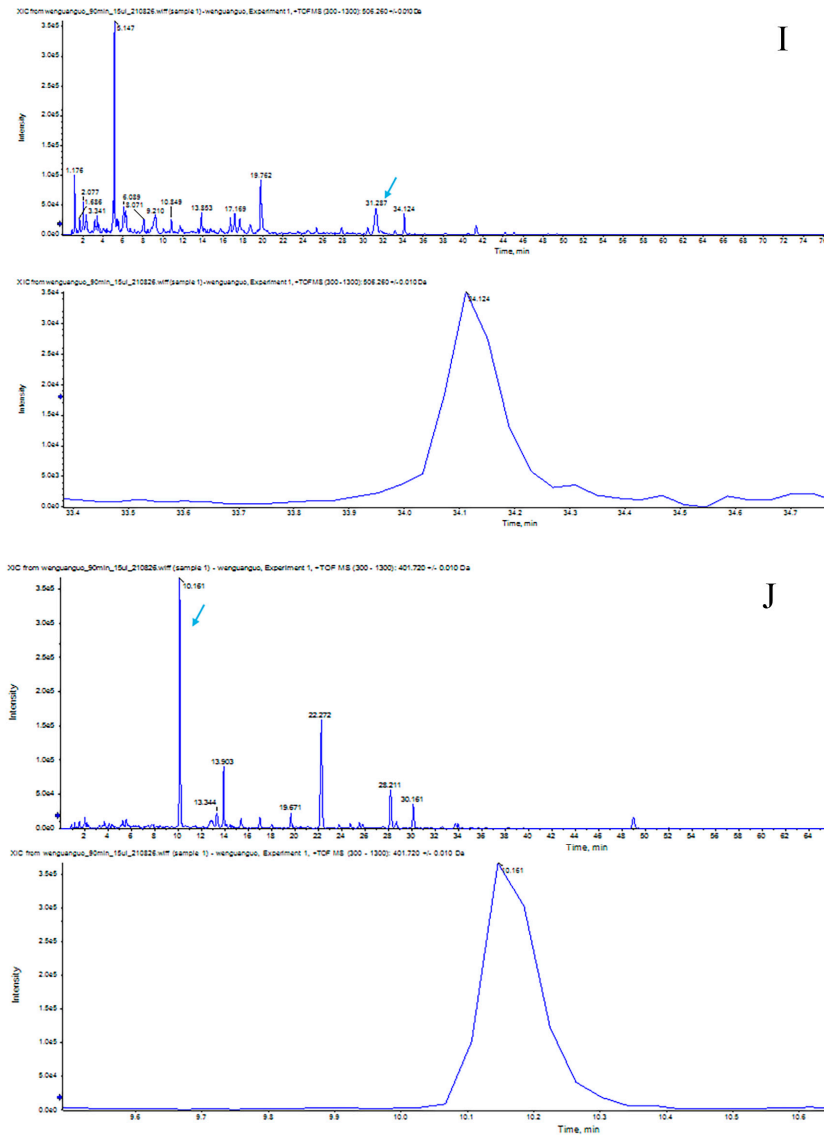


Figure S1. The ion flow diagram of polypeptide extraction from XSM. A. AEQPPLFDGT . B. GMVRELIVNVG. C. LCLELVNGVI. D. GGLPGFDPA. E. VTYPIIADPN. F. IMAVLAIVL. G. INPILLPK. H.ETYFIVR. I. TVWPGIQPN. J. IAICNGVL.