

Supporting Information

Facile Synthesis of Highly Emissive All-Inorganic Manganese Bromide Compounds with Perovskite-Related Structures for White LEDs

Ping Gao ¹, Suwen Cheng ¹, Jiaxin Liu ¹, Junjie Li ¹, Yanyan Guo ² and Zhengtao Deng ², Tianshi Qin ¹ and Aifei Wang ^{1,*}

¹ Key Laboratory of Flexible Electronics (KLOFE) & Institute of Advanced Materials (IAM), Jiangsu National Synergetic Innovation Center for Advanced Materials (SICAM), Nanjing Tech University (Nanjing Tech), Nanjing 211816, China

² College of Engineering and Applied Sciences, State Key Laboratory of Analytical Chemistry for Life Science, National Laboratory of Micro-Structures, Nanjing University, Nanjing 210023, China

* Correspondence: iamafwang@njtech.edu.cn

Supplementary Figures

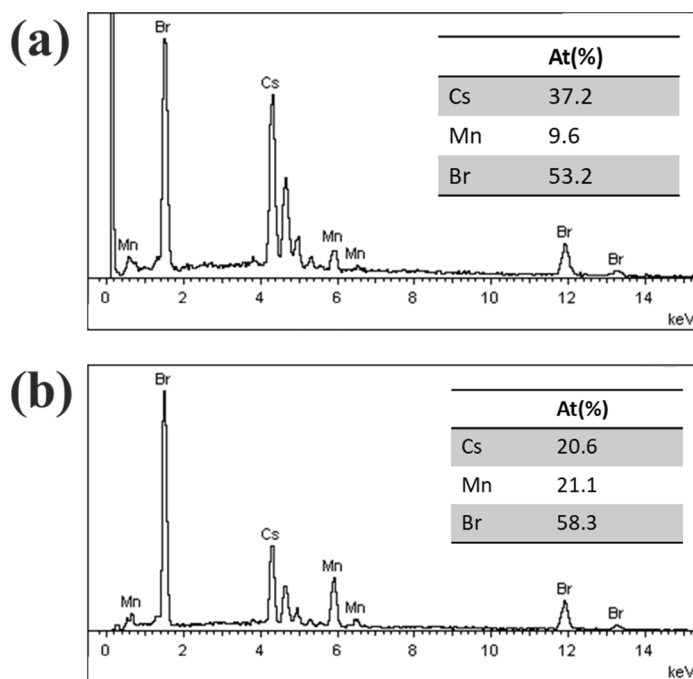


Figure S1. EDS spectrum of the (a) Cs_3MnBr_5 and (b) CsMnBr_3 .