

Figure S1. Plots of enzyme activity. The enzyme activity indicates the change in absorbance at 475 nm at different concentrations of RG and SGD. The final L-DOPA concentration was 1 mg/mL. (**A1** RG-CE; **A2** RG-EAE; **B1** SGD-FDP; **B2** SGD-WE; **B3** SGD-NBE; **B4** SGD-EAE; **B5** SGD-CE)

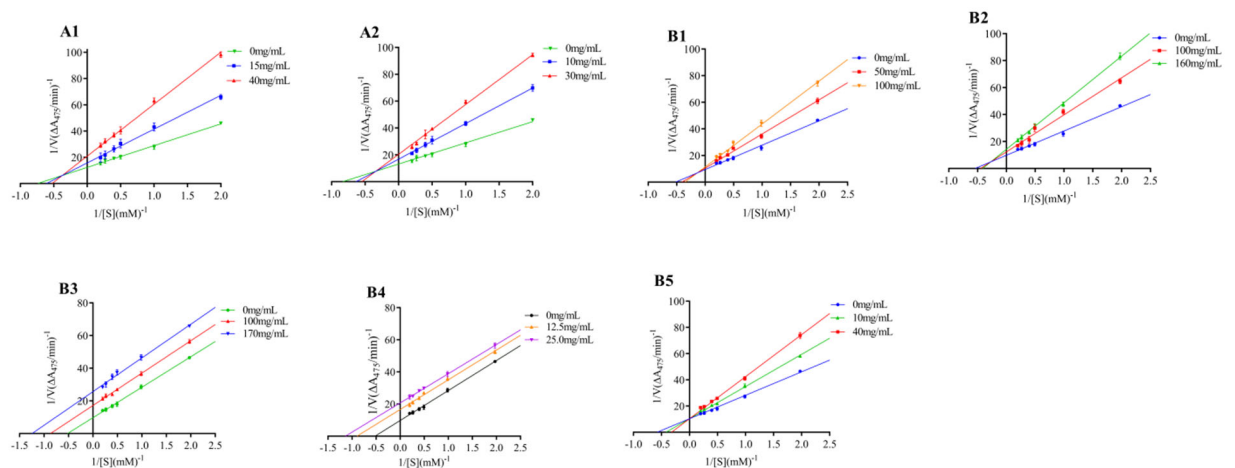


Figure S2. Lineweaver-Burk plot. The different concentrations at RG and SGD. (**A1** RG-CE; **A2** RG-EAE; **B1** SGD-FDP; **B2** SGD-WE; **B3** SGD-NBE; **B4** SGD-EAE; **B5** SGD-CE)

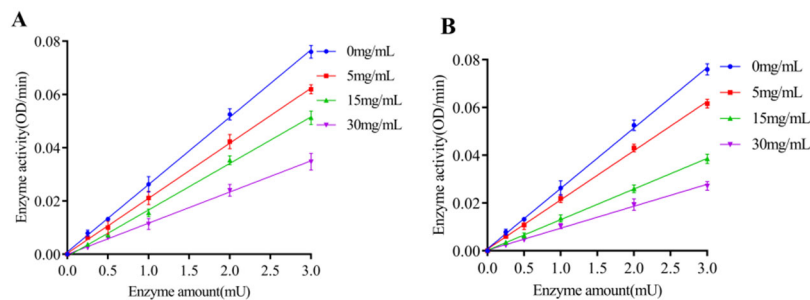


Figure S3. Plots of enzyme activity. The enzyme activity indicates the change in absorbance at 410

nm at different concentrations of RG-NBE and SGD-NBE. (**A** RG-NBE **B** SGD-NBE)

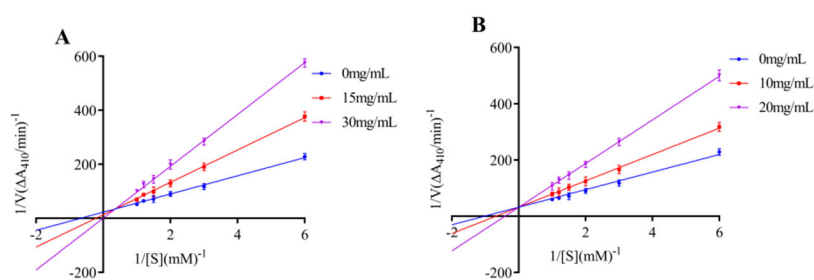


Figure S4. Lineweaver-burk plot in different concentrations at RG-NBE and SGD-NBE. (**A** RG-NBE; **B** SGD-NBE)

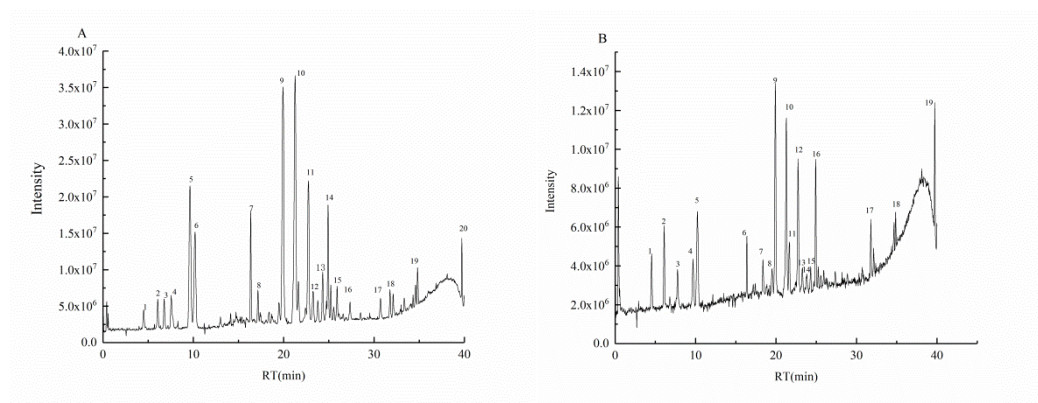


Figure S5. Total ion chromatography diagrams of NBE components from RG and SGD. (**A** RG-NBE; **B** SGD-NBE)