

Supplemental material

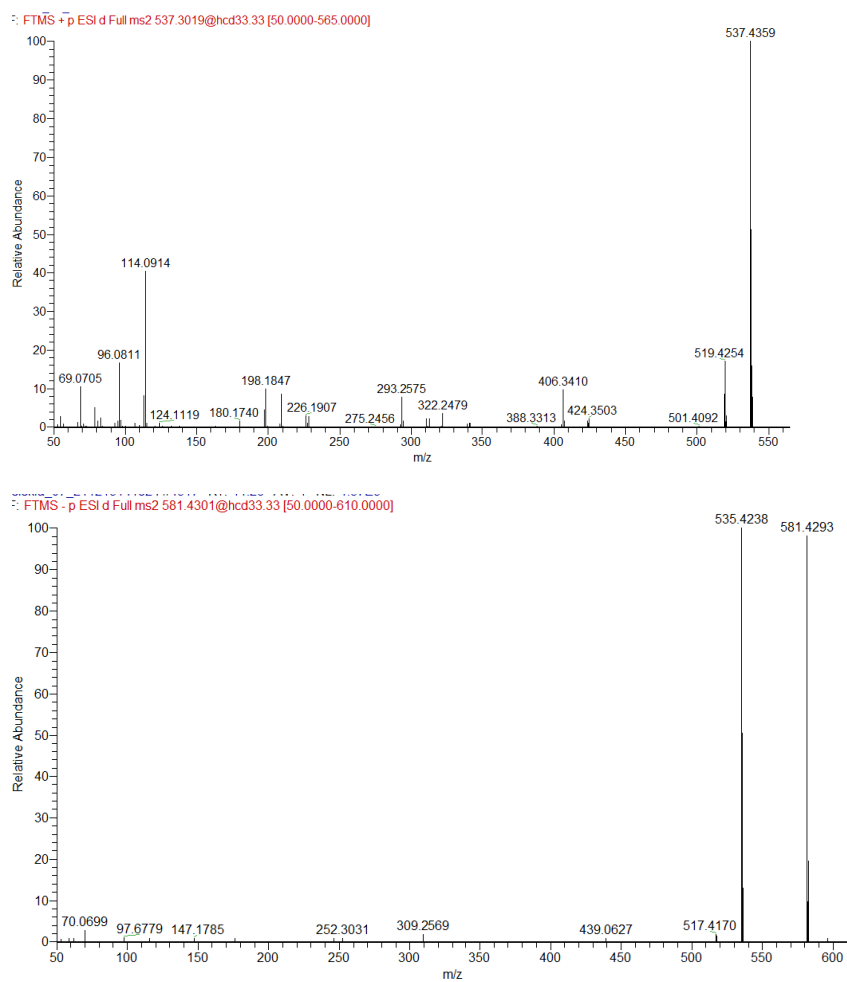
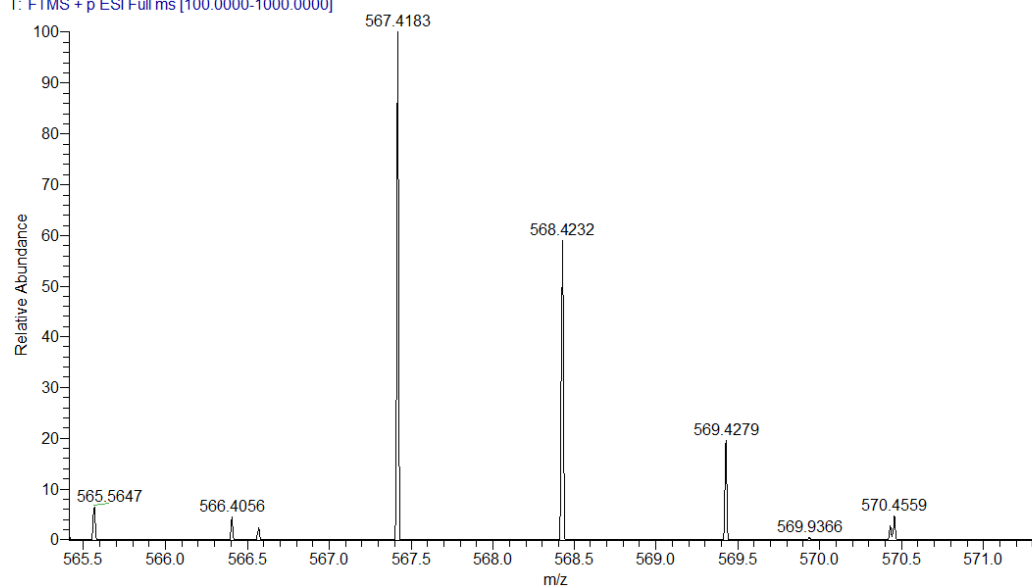


Figure S1. (+) ESI-MS/MS (up) and (-) ESI-MS/MS (down) spectra of carotene (**1**).

F: FTMS + p ESI Full ms [100.0000-1000.0000]



telekia_07_211215131343 #10663 RT: 22.91 AV: 1 NL: 3.95E4
F: FTMS + p ESI d Full ms2 567.4182@hcd33.33 [50.0000-595.0000]

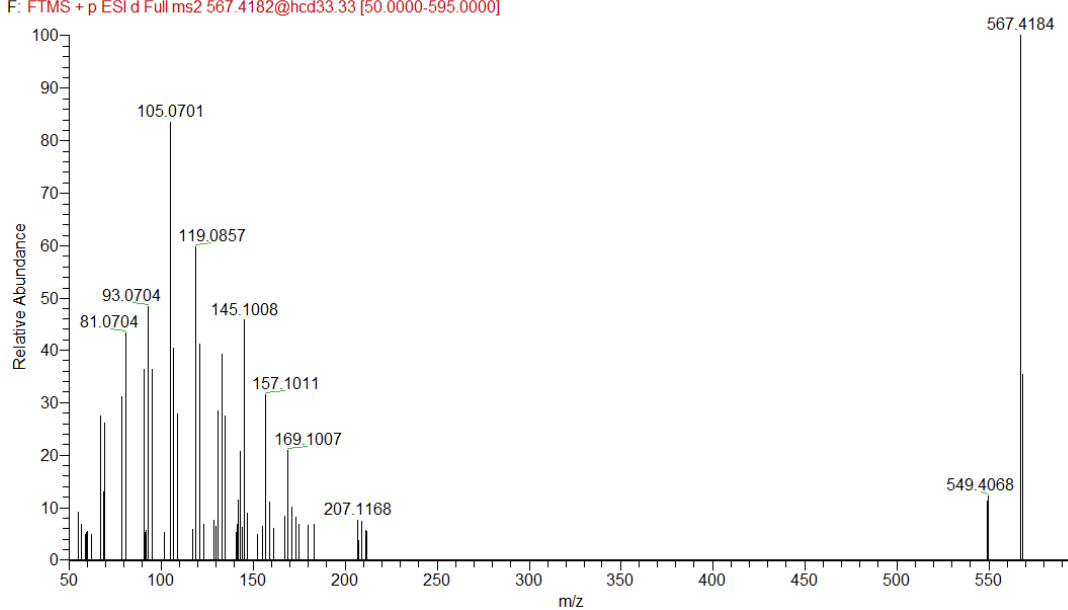


Figure S2. Monoisotopic profile of hydroxyechineone (**3**) in Full MS spectrum (up); (+) ESI-MS/MS spectrum (down).

elekia_07_211215131343-2 #10521 RT: 22.61 AV: 1 NL: 3.04E5
 F: FTMS + p ESI Full ms [100.0000-1000.0000]

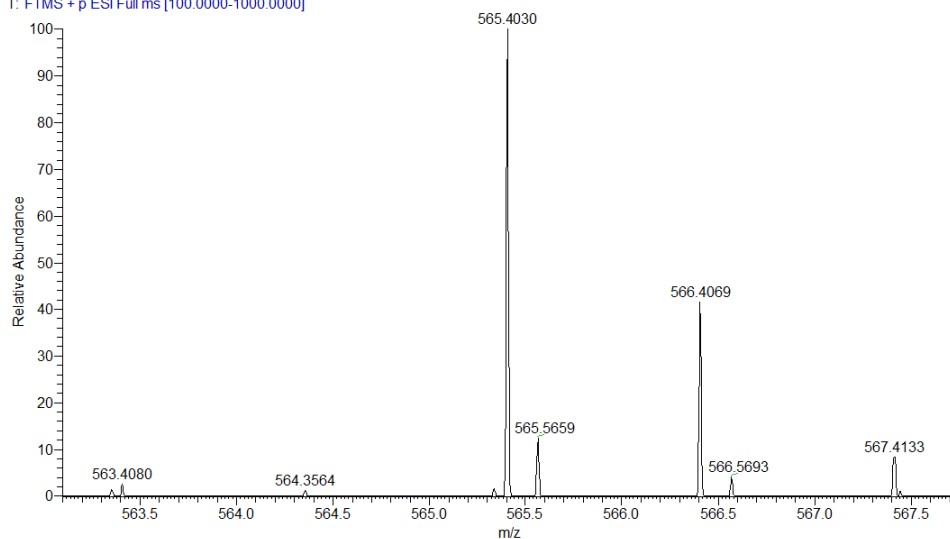


Figure S3. Monoisotopic profile of canthaxanthine (**2**) in Full MS spectrum.

F: FTMS - p ESI d Full ms2 275.2020@hcd33.33 [50.0000-300.0000]

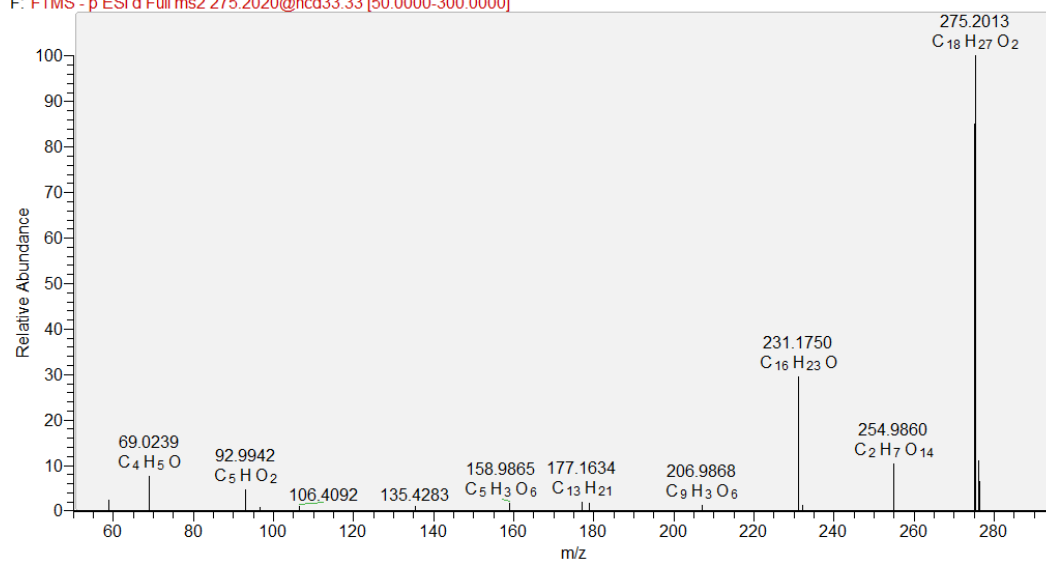


Figure S4. (-) ESI-MS/MS spectrum of octadecatetraenoic acid (**10**).

F: FTMS - p ESI d Full ms2 293.1403@hcd33.33 [50.0000-320.0000]

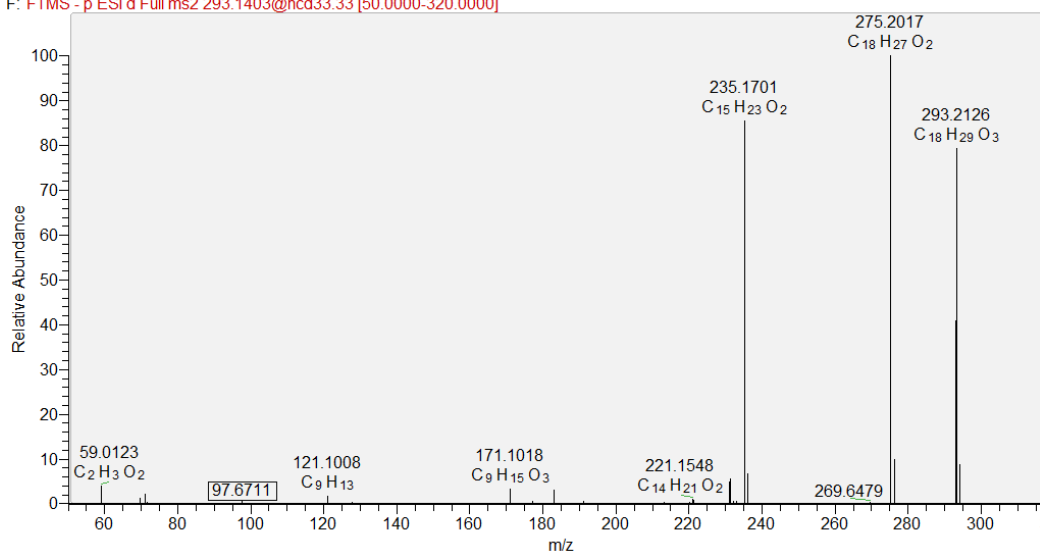


Figure S5. (-) ESI-MS/MS spectrum of hydroxyoctadecatrienoic (**12**).

F: FTMS - p ESI d Full ms2 305.1767@hcd33.33 [50.0000-330.0000]

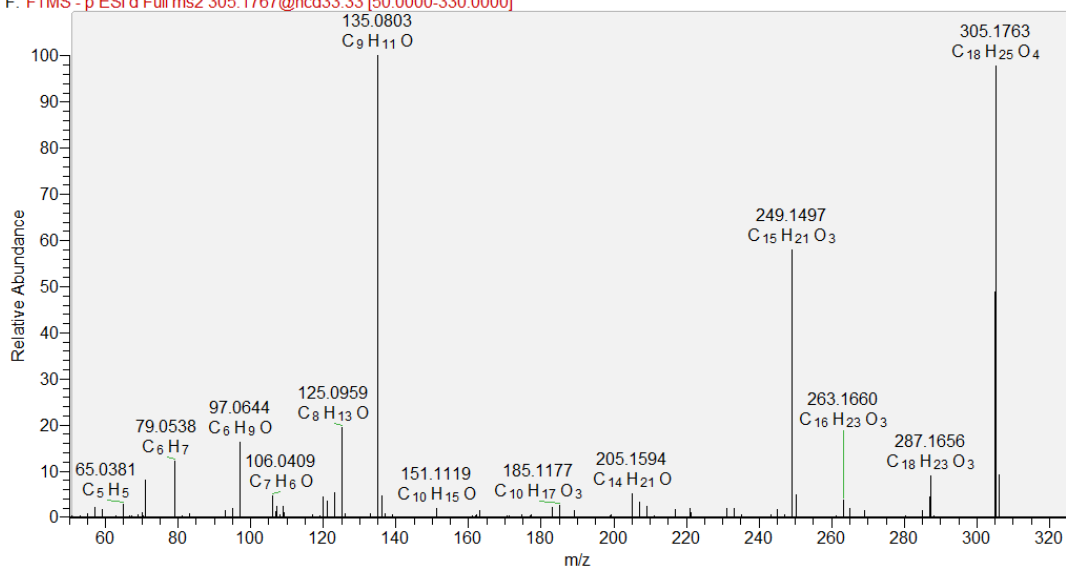


Figure S6. (-) ESI-MS/MS spectrum of dihydroxyoctadecapentaenoic acid (**14**).

F: FTMS - p ESI d Full ms2 323.0143@hcd33.33 [50.0000-350.0000]

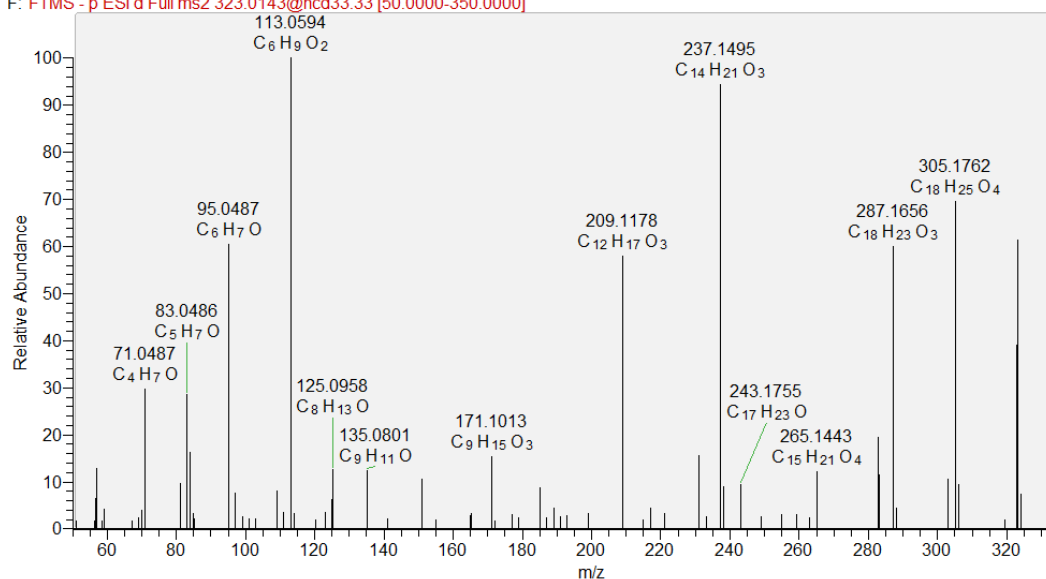


Figure S7. (-) ESI-MS/MS spectrum of trihydroxyoctadecatetraenoic acid (18).

F: FTMS - p ESI d Full ms2 263.1657@hcd33.33 [50.0000-285.0000]

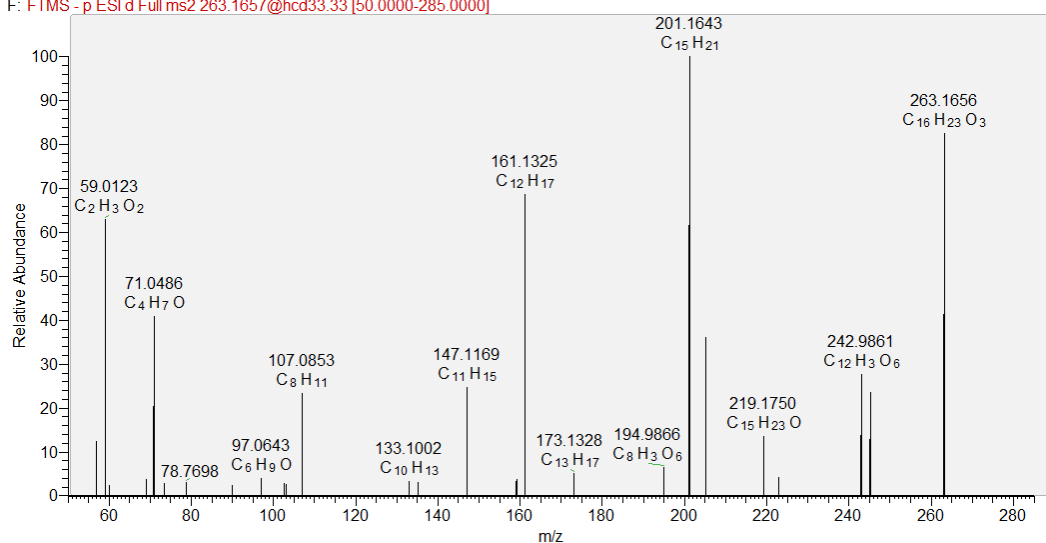


Figure S8. (-) ESI-MS/MS spectrum of hydroxyhexadecatetraenoic acid (6).