

Supplementary Materials

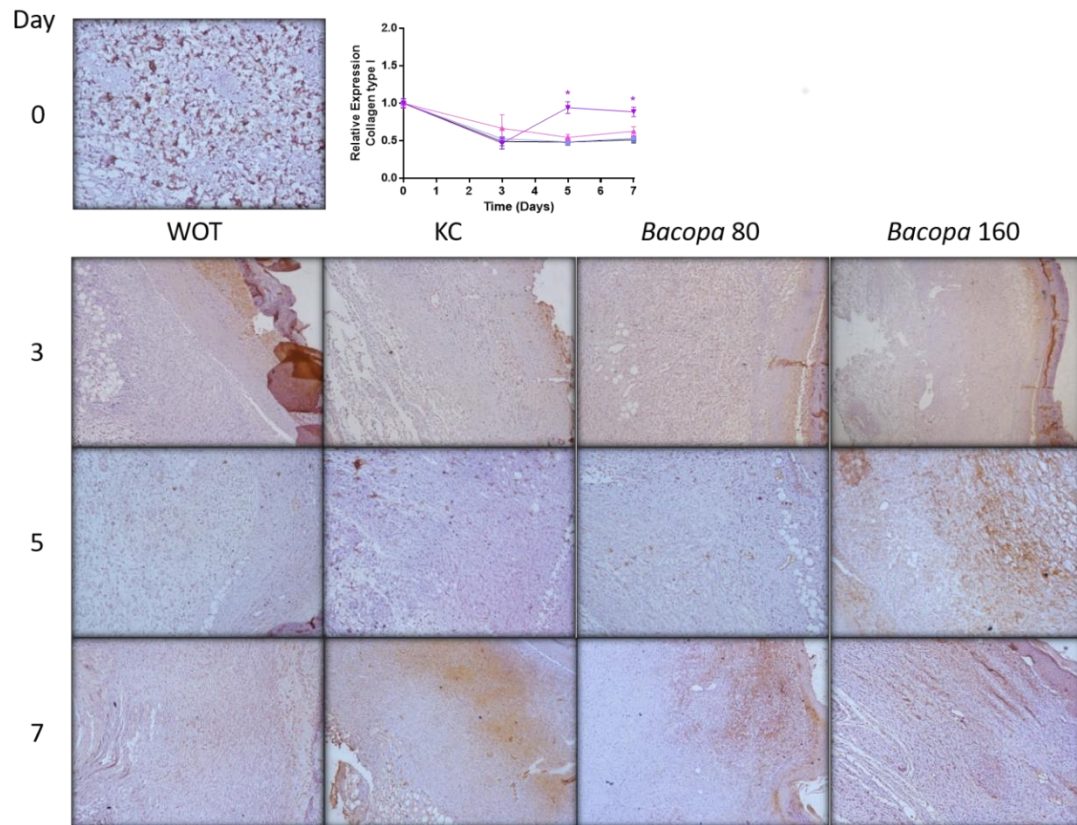


Figure S1. Collagen type I expression. Representative microphotographs of collagen type I protein by immunohistochemistry detection on wound tissue at different periods of time (0, 3, 5 and 7 days) in WOT (black line), KC (blue line), and 80 mg/mL (pink line) and 160 mg/mL (purple line) of PB. * $p < 0.05$ vs WOT.

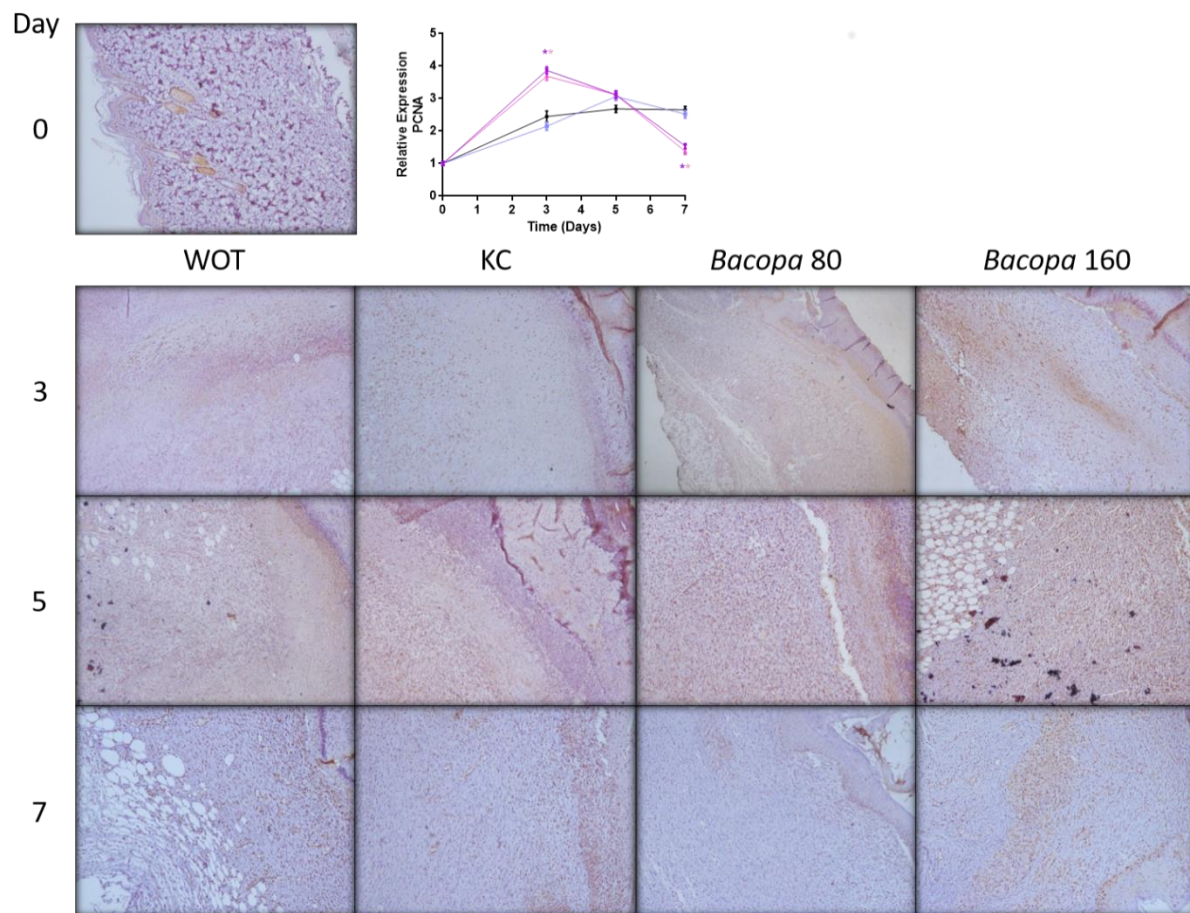


Figure S2. PCNA expression. Representative microphotographs of PCNA protein by immunohistochemistry detection on wound tissue at different periods of time (0, 3, 5 and 7 days) in WOT, WOT (black line), KC (blue line), and 80 mg/mL (pink line) and 160 mg/mL (purple line) of PB. $*p < 0.05$ vs WOT.

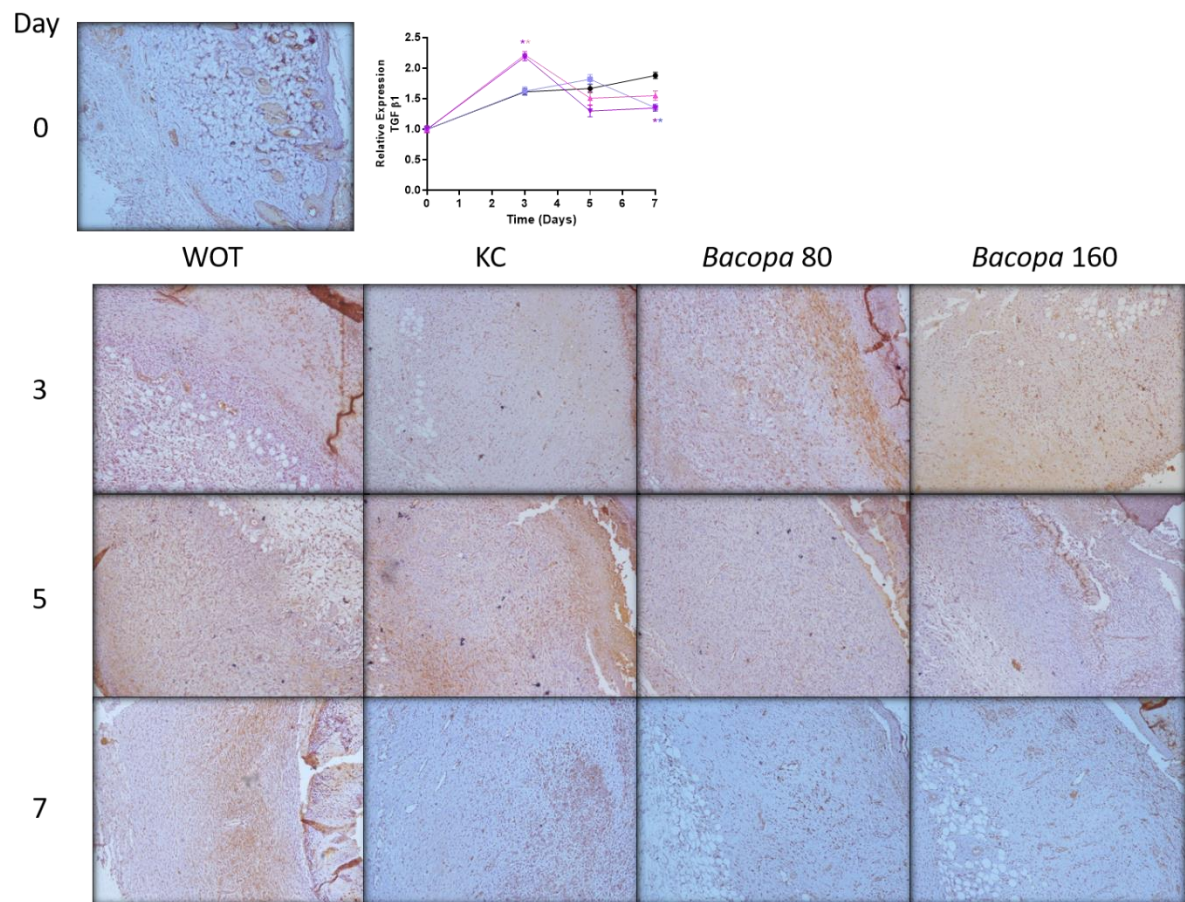


Figure S3. TGF β 1 expression. Representative microphotographs of TGF β 1 protein expression from wound tissues were analyzed by immunohistochemistry at different periods of time (0, 3, 5 and 7 days) in WOT (black line), KC (blue line), and 80 mg/mL (pink line) and 160 mg/mL (purple line) of *PB*. * $p < 0.05$ vs WOT.

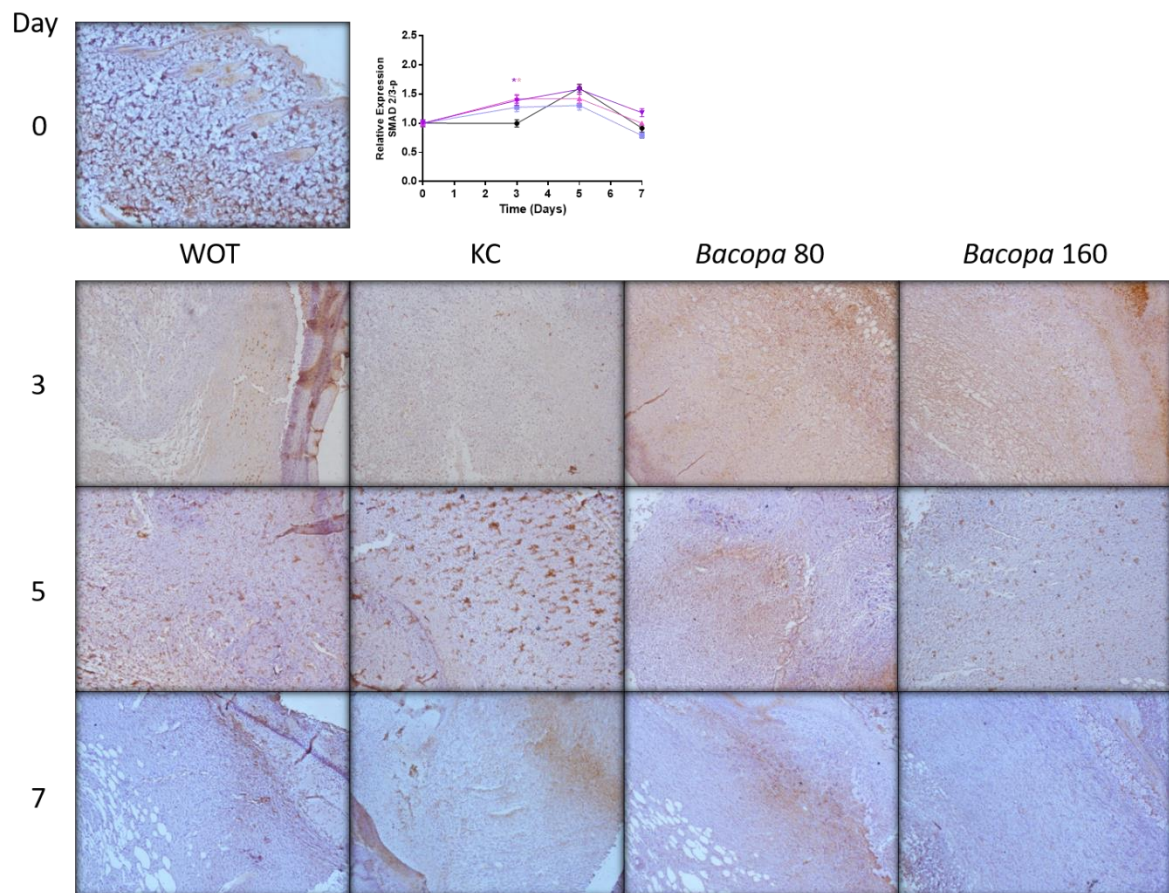


Figure S4. SMAD 2/3-p expression. Representative microphotographs of SMAD 2/3 phosphorylated protein by immunohistochemistry detection on wound tissue at different periods of time (0, 3, 5 and 7 days) in WOT (black line), KC (blue line), and 80 mg/mL (pink line) and 160 mg/mL (purple line) of PB. * $p < 0.05$ vs WOT.

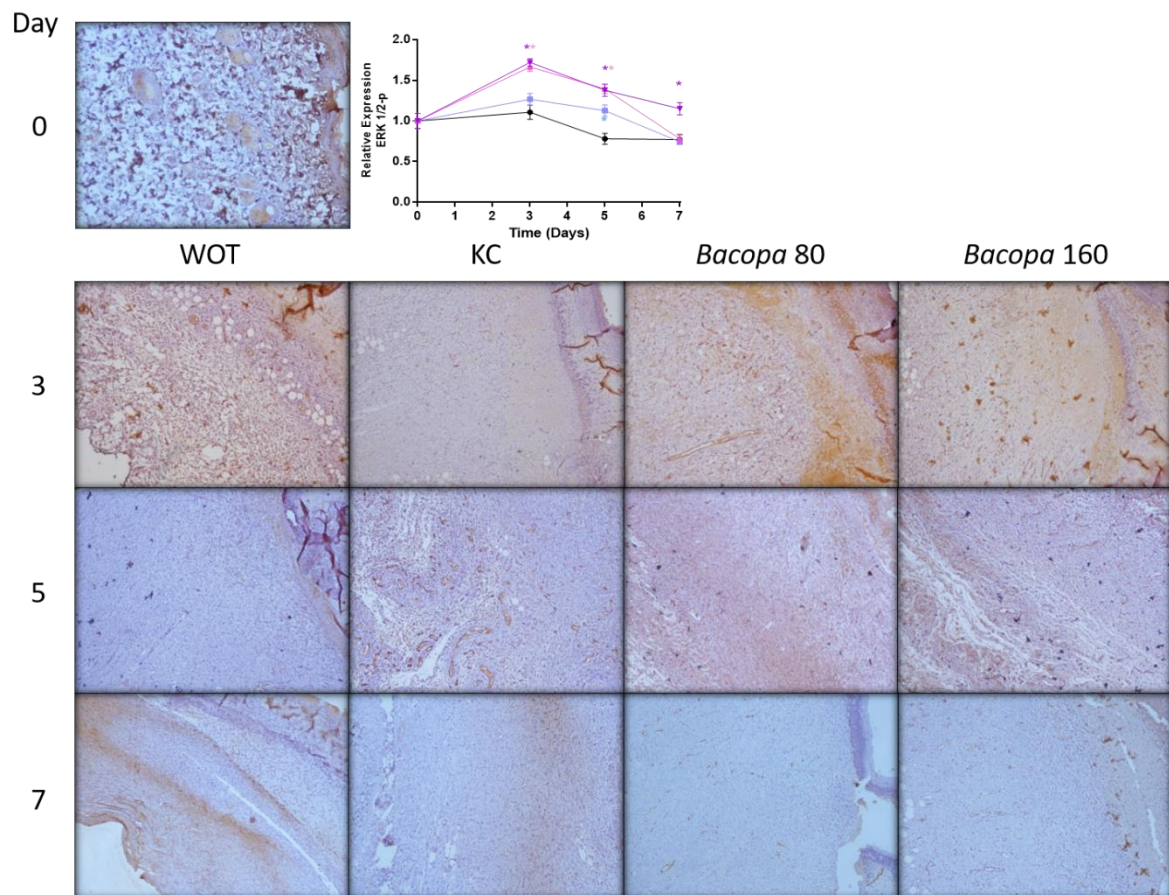


Figure S5. ERK 1/2-p expression. Representative microphotographs of ERK 1/2 phosphorylated protein by immunohistochemistry detection on wound tissue at different periods of time (0, 3, 5 and 7 days) in WOT (black line), KC (blue line), and 80 mg/mL (pink line) and 160 mg/mL (purple line) of PB. * $p < 0.05$ vs WOT.