

Electronic Supplementary Information

Development of yellow-to-orange photoluminescence molecules based on alterations in the donor units of fluorinated tolans

Shigeyuki Yamada ^{1,*}, Kazuki Kobayashi ¹, and Tsutomu Konno ¹

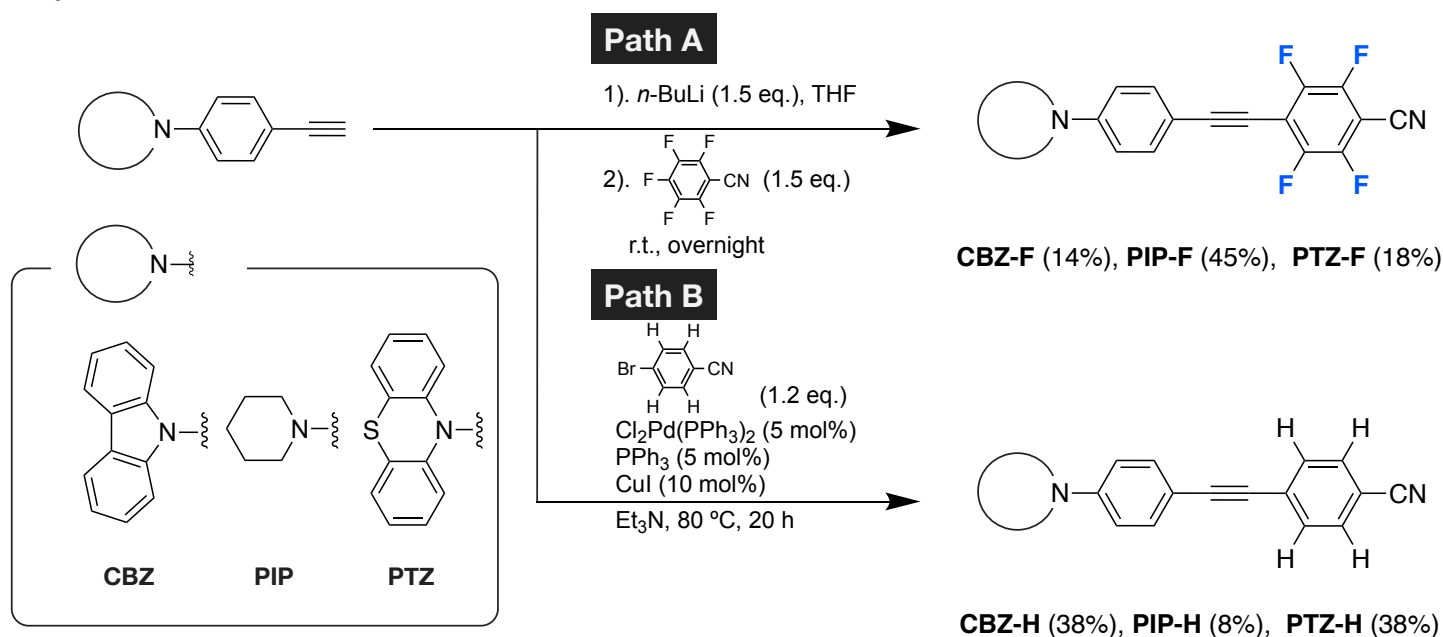
¹Faculty of Molecular Chemistry and Engineering, Kyoto Institute of Technology,
Matsugasaki, Sakyo-ku, Kyoto 606-8585, Japan.

*Correspondence: syamada@kit.ac.jp (S.Y.); Tel.: +81-75-724-7517

Table of Contents

1. Synthesis	••••••••••	S-2
2. NMR Spectra	••••••••••	S-3
3. X-ray crystallographic analysis	••••••••••	S-12
4. DFT Calculation	••••••••••	S-12
Cartesian coordinate	••••••••••	S-13
5. Photophysical Characteristics	••••••••••	S-19
6. DLS measurement	••••••••••	S-25

1. Synthesis



Typical synthesis procedure for Fluorinated tolans: Path A

In a two-necked round-bottomed flask, 4-aminophenylacetylene was added to THF, and the mixture was cooled to 0 °C. *n*-butyllithium (1.6 mol L⁻¹ hexane solution) was added dropwise to this mixture, and the resulting solution was continuously stirred at 0 °C for 0.5 h. Pentafluorobenzonitrile was then added dropwise to the solution. After the addition was complete, the reaction mixture was warmed to 25 °C and stirred for overnight. The reaction mixture was then poured into a saturated aqueous NH₄Cl solution, the crude product was extracted with ethyl acetate (EtOAc) three times, and the combined organic layer was washed with brine. The organic layer was dried over anhydrous sodium sulfate (Na₂SO₄), which was then separated by filtration. The filtrate was evaporated in vacuo and purified by silica-gel column chromatography (eluent: hexane/EtOAc = 10/1), followed by recrystallization from a mixed solvent system (hexane/CHCl₃ = 1/1), which afforded the corresponding fluorinated tolans, in 14-45% isolated yield.

Typical synthesis procedure for non-Fluorinated tolans: Path B

In a two-necked round-bottomed flask were added 4-aminophenylacetylene, dichlorobis(triphenylphosphine)palladium(0), triphenylphosphine, copper(I) iodide, 4-bromobenzonitrile, and triethylamine. The resultant mixture was stirred at 80 °C for 20 h. The precipitate formed during the reaction was separated by atmospheric filtration, and the filtrate was poured into a saturated aqueous NH₄Cl solution. The crude product was extracted three times with ethyl acetate (EtOAc), and the combined organic layer was washed once with brine. The organic layer was dried over anhydrous sodium sulfate (Na₂SO₄), which was separated by filtration. The filtrate was evaporated in vacuo and purified by silica-gel column chromatography (eluent: hexane/EtOAc = 20/1), followed by recrystallization from a mixed solvent system (hexane/CH₂Cl₂ = 1/1) to afford the corresponding non-fluorinated tolane, in 8-38% isolated yield.

2. NMR Spectra

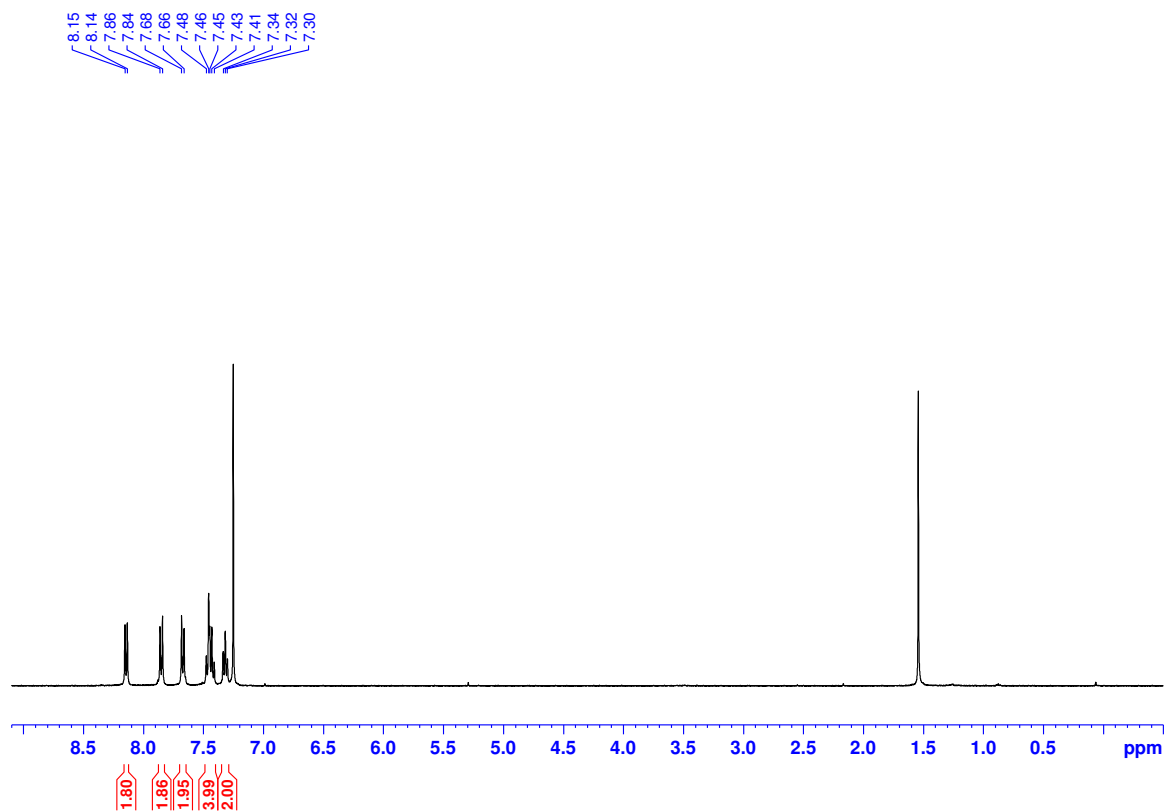


Figure S1. ¹H NMR spectrum of CBZ-F (400 MHz, CDCl₃).

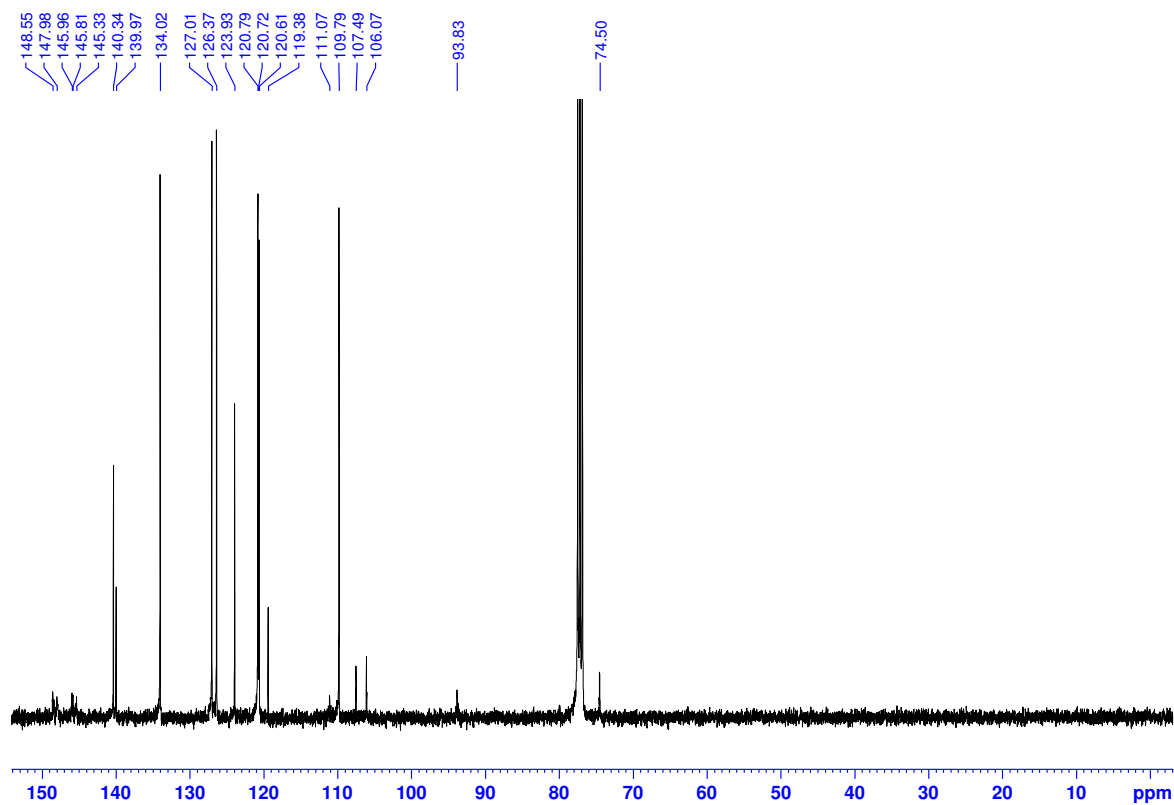


Figure S2. ¹³C NMR spectrum of CBZ-F (100 MHz, CDCl₃).

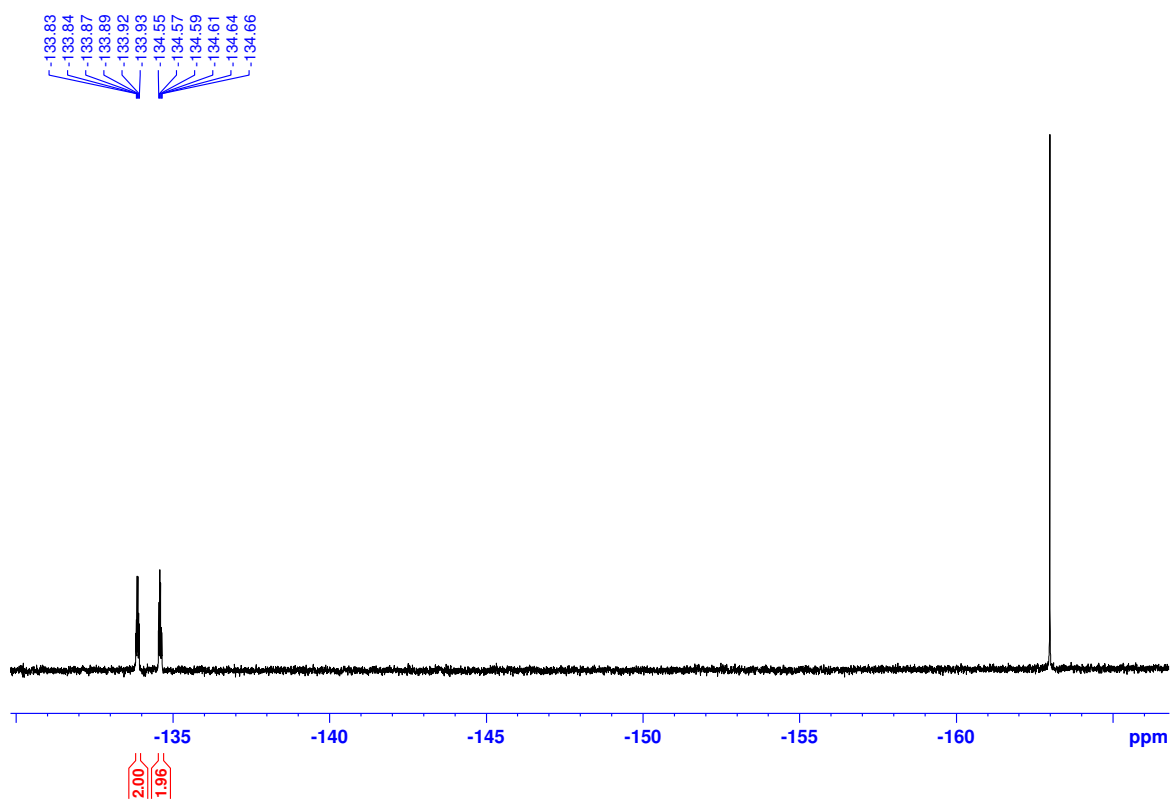


Figure S3. ^{19}F NMR spectrum of CBZ-F (376 MHz, CDCl_3 , hexafluorobenzene $\delta_{\text{F}} = -163$ ppm).

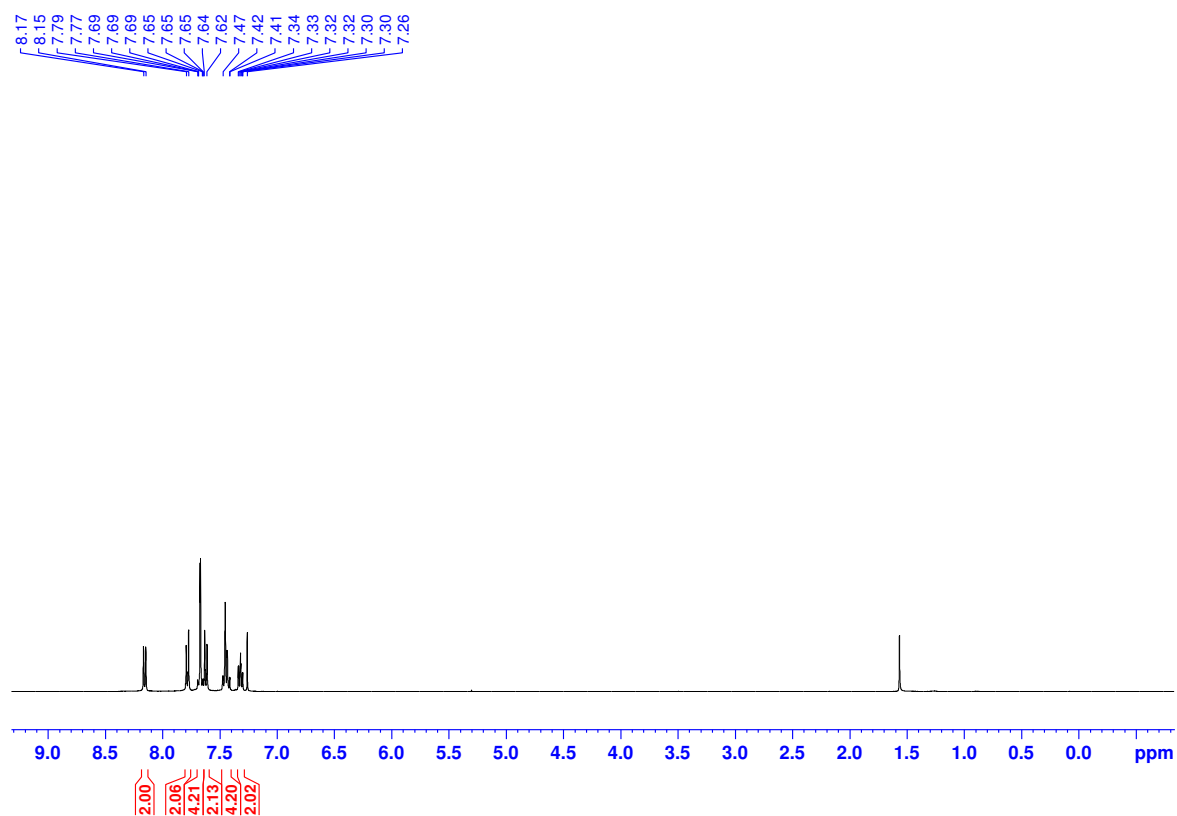


Figure S4. ¹H NMR spectrum of **CBZ-H** (400 MHz, CDCl₃).

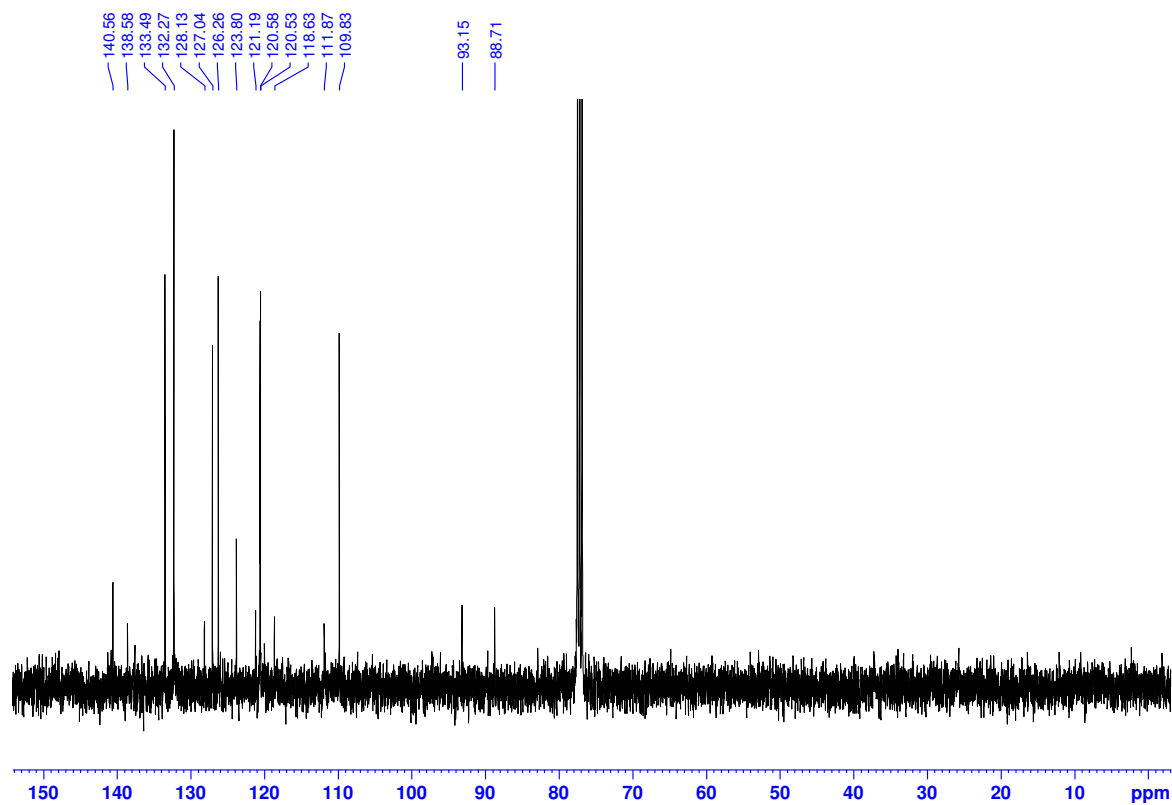


Figure S5. ¹³C NMR spectrum of **CBZ-H** (100 MHz, CDCl₃).

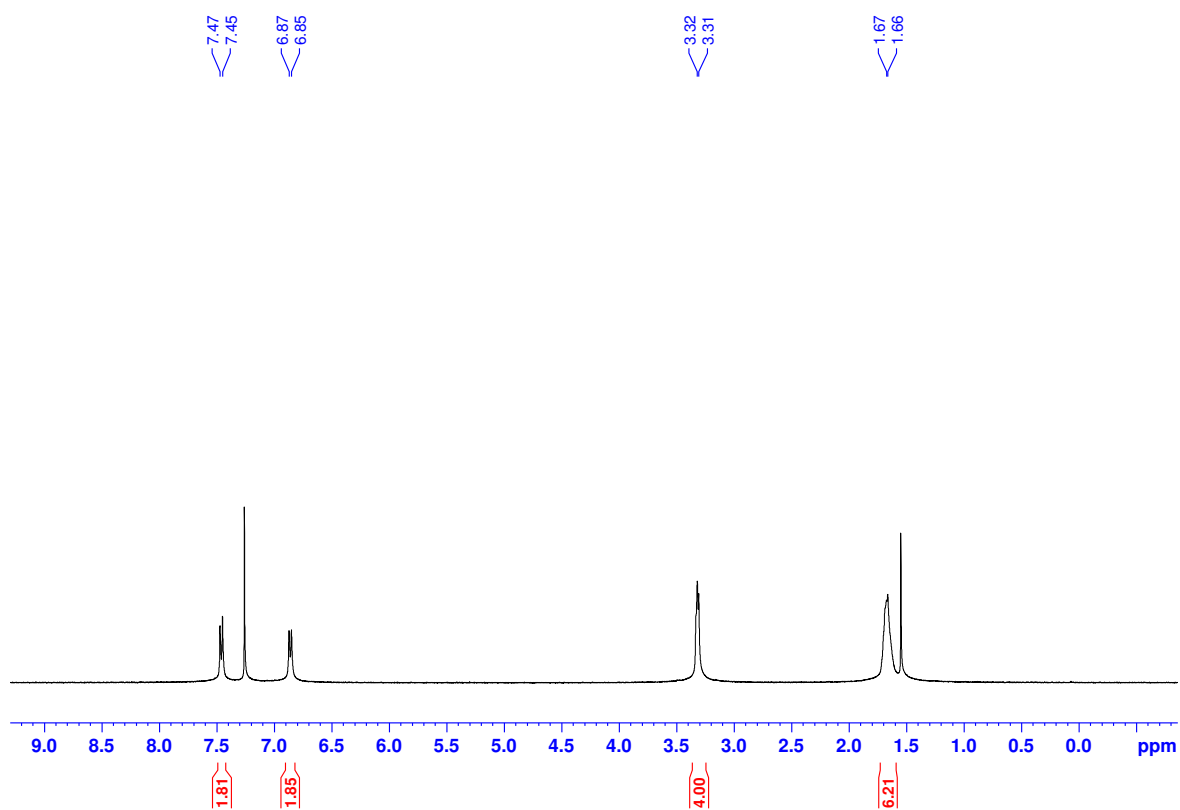


Figure S6. ¹H NMR spectrum of PIP-F (400 MHz, CDCl₃).

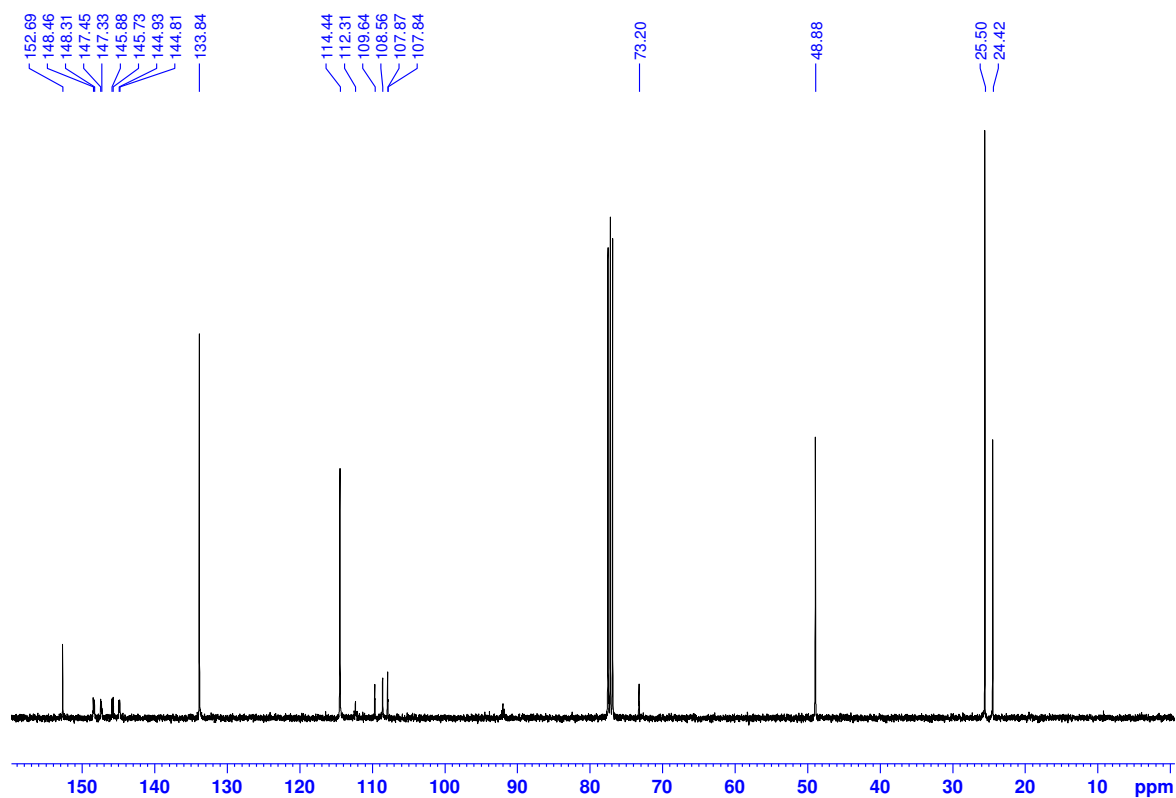


Figure S7. ¹³C NMR spectrum of PIP-F (100 MHz, CDCl₃).

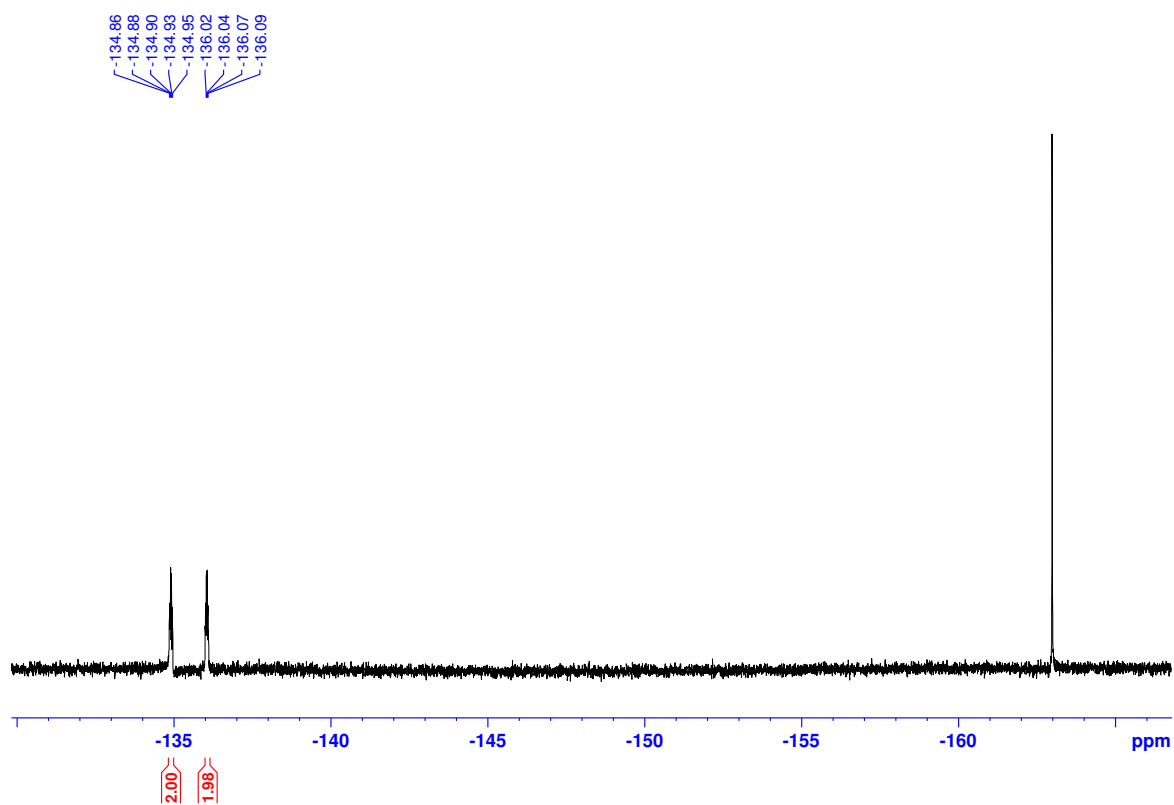


Figure S8. ^{19}F NMR spectrum of **PIP-F** (376 MHz, CDCl_3 , hexafluorobenzene $\delta_{\text{F}} = -163$ ppm).

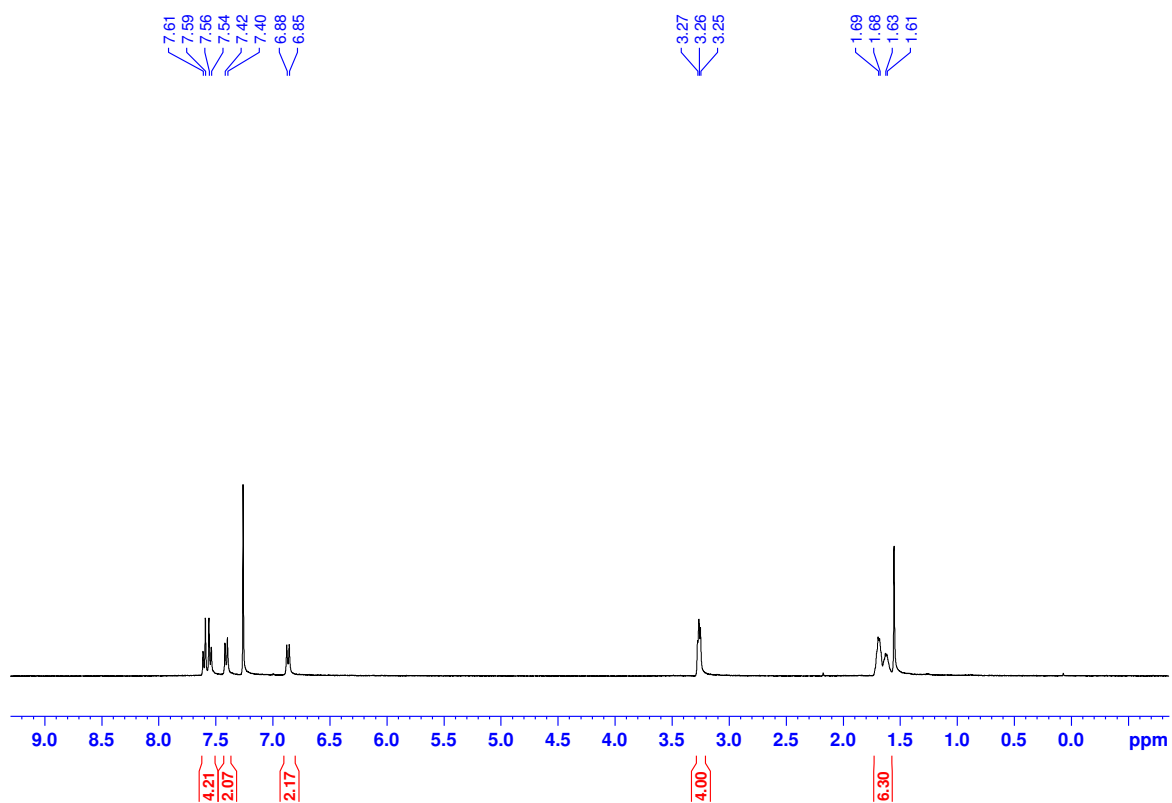


Figure S9. ¹H NMR spectrum of PIP-H (400 MHz, CDCl₃).

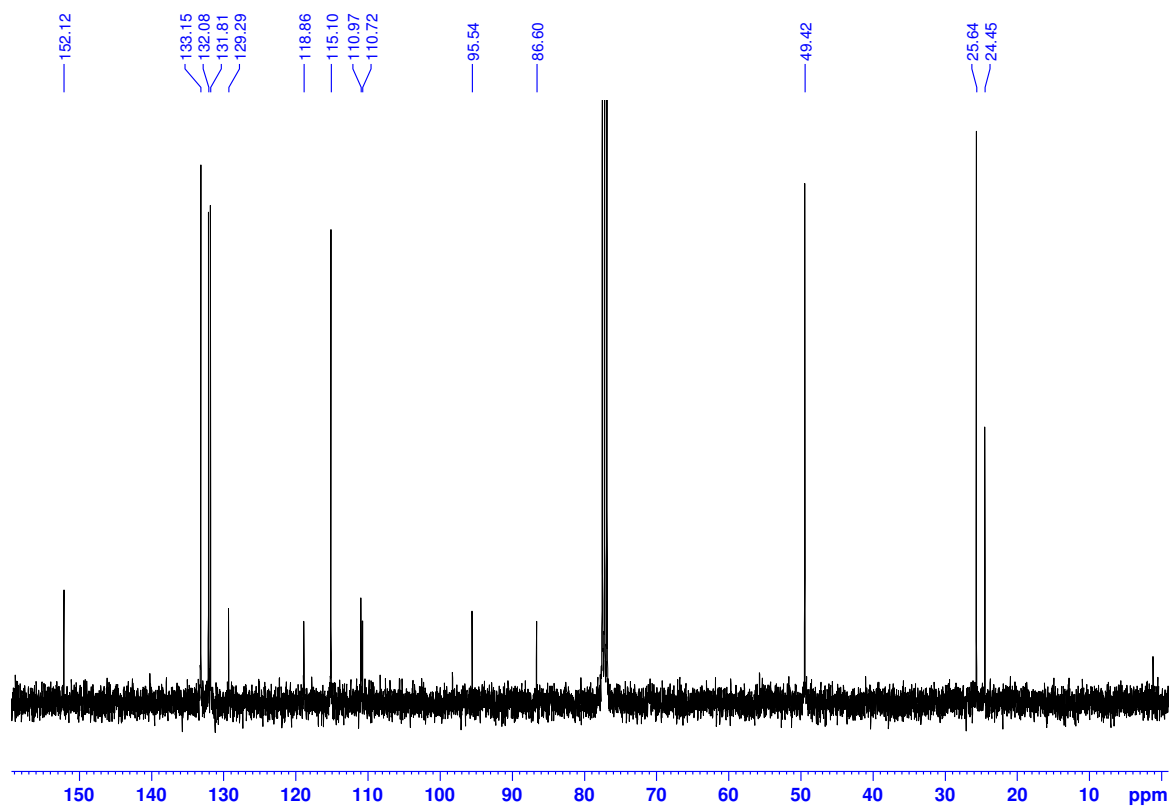


Figure S10. ¹³C NMR spectrum of PIP-H (100 MHz, CDCl₃).

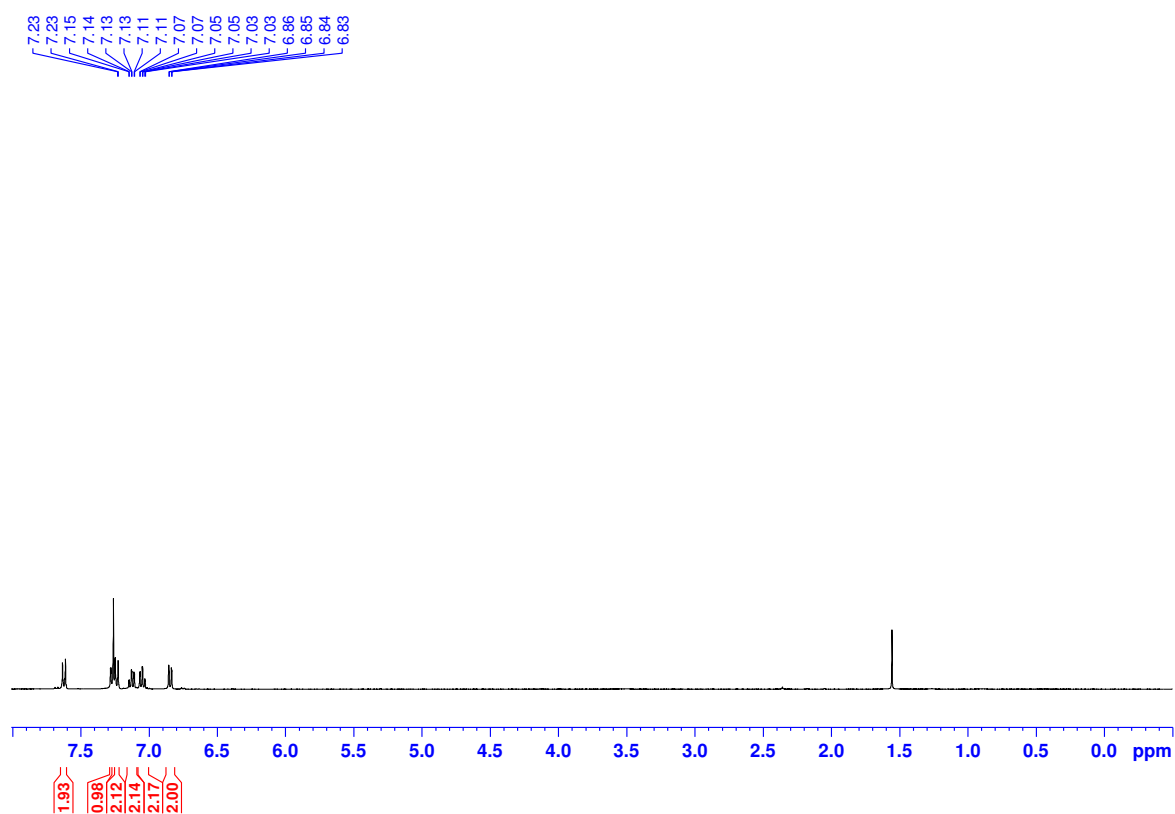


Figure S11. ¹H NMR spectrum of PTZ-F (400 MHz, CDCl₃).

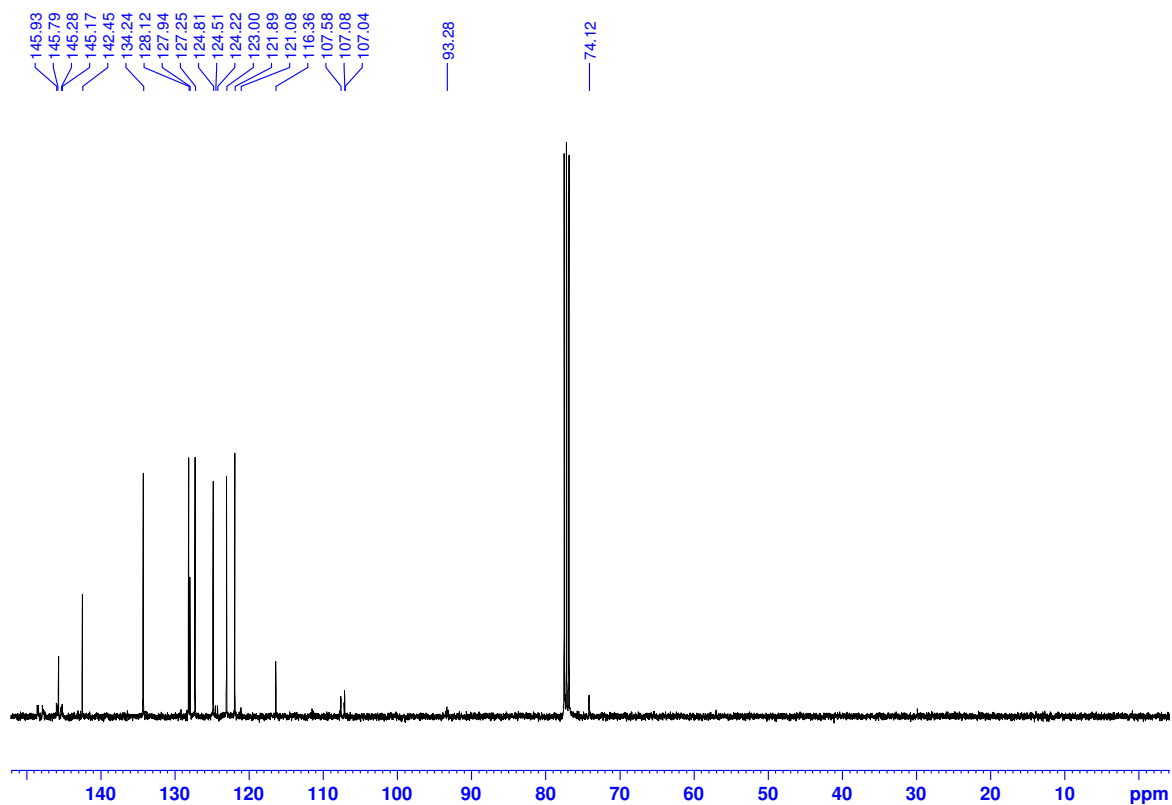


Figure S12. ¹³C NMR spectrum of PTZ-F (100 MHz, CDCl₃).

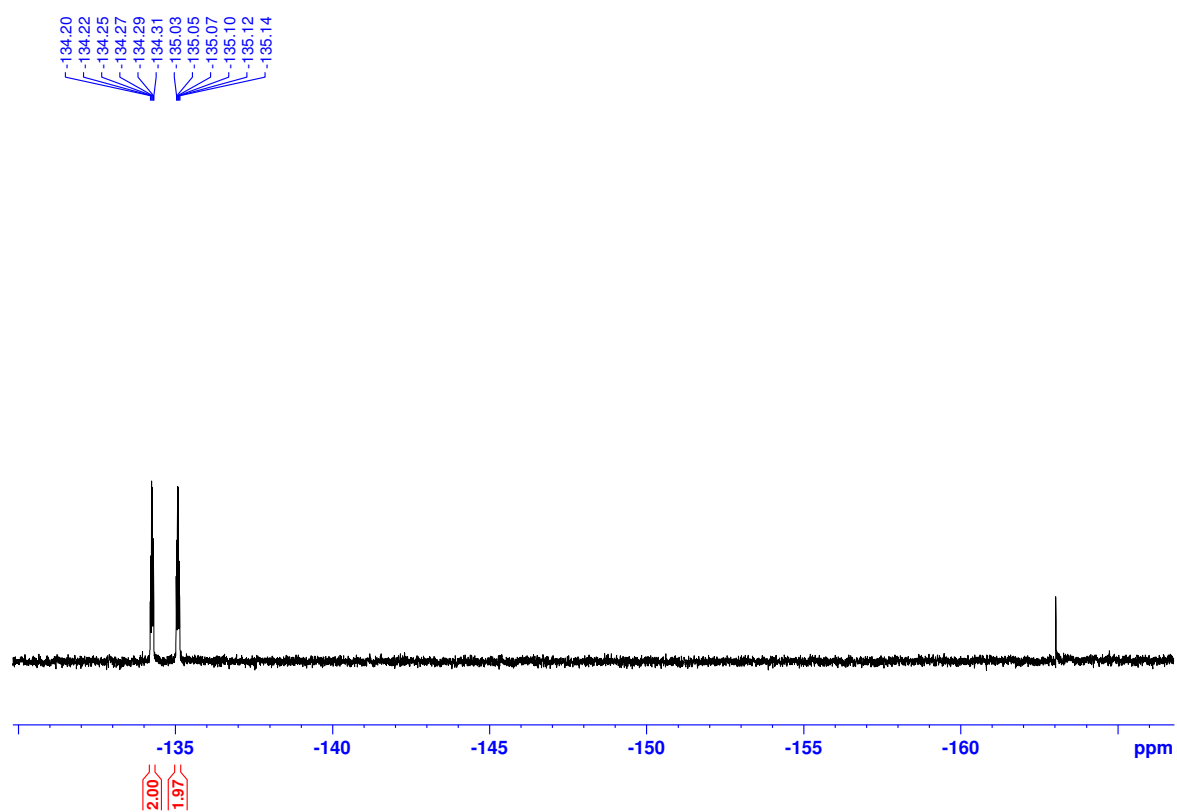


Figure S13. ^{19}F NMR spectrum of PTZ-F (376 MHz, CDCl_3 , hexafluorobenzene $\delta_{\text{F}} = -163$ ppm).

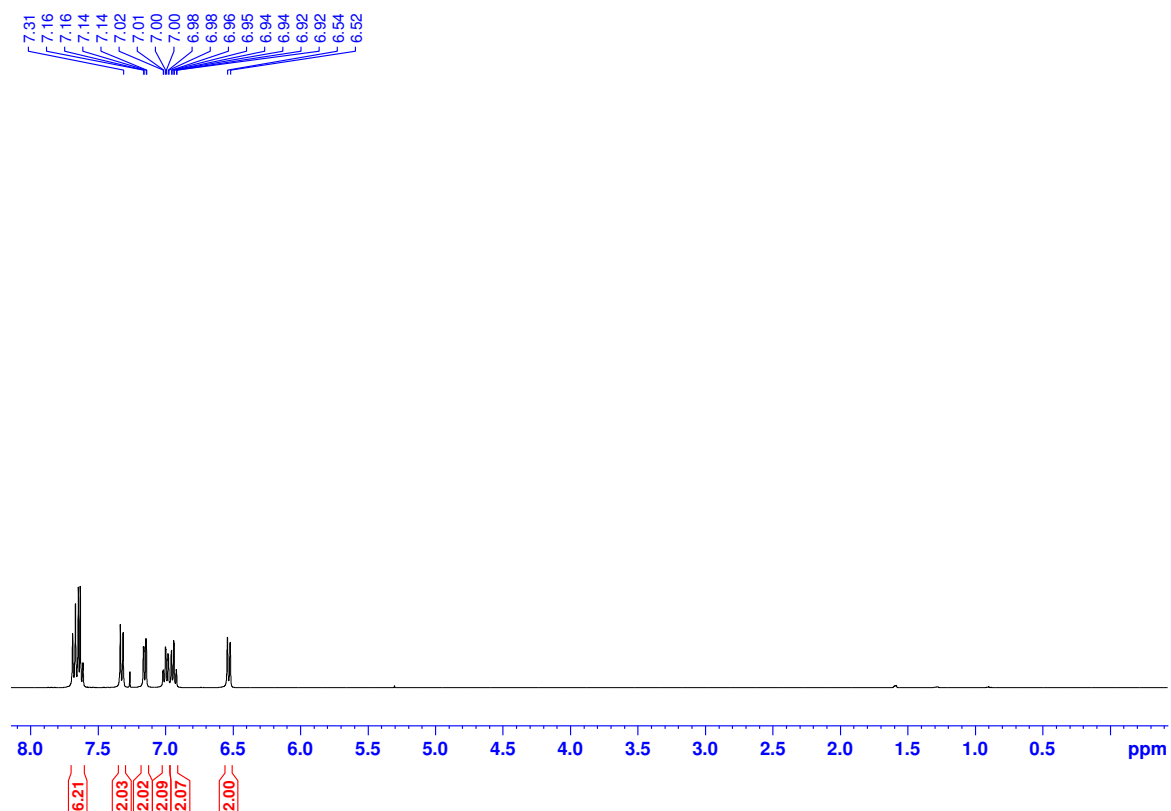


Figure S14. ^1H NMR spectrum of PTZ-H (400 MHz, CDCl_3).

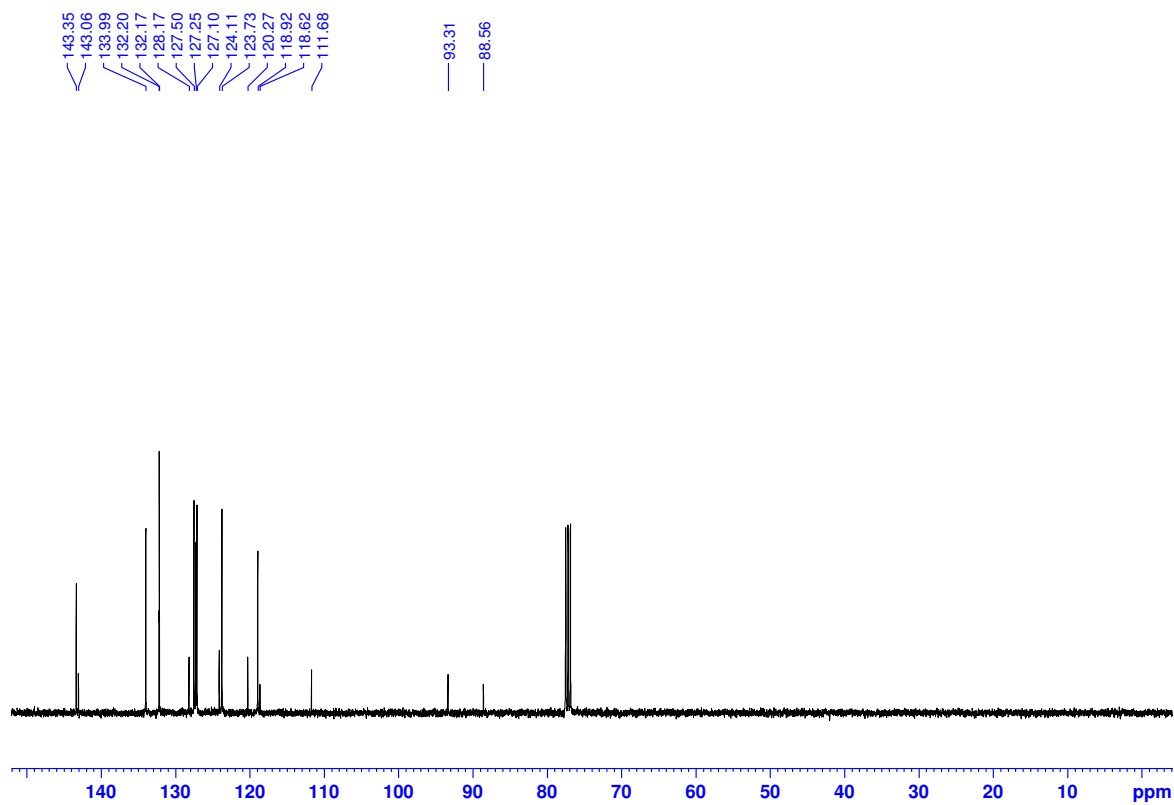


Figure S15. ^{13}C NMR spectrum of PTZ-H (100 MHz, CDCl_3).

3. X-ray Crystallographic Analysis

Table S1. Crystallographic data of **CBZ-H**, **PIP-F**, **PTZ-F**, **PTZ-H**.

	CBZ-H	PIP-F	PTZ-F	PTZ-H
CCDC #	2151066	2151065	215108	2151067
Empirical Formula	C ₂₇ H ₁₆ N ₂	C ₂₀ H ₁₄ F ₄ N ₂	C ₂₇ H ₁₂ F ₄ N ₂ S	C ₂₇ H ₁₆ N ₂
Formula weight	368.42	358.33	472.45	400.48
Temperature [K]	298	297	298	100
Crystal Color / Habit	Colourless / block	Yellow / block	Orange / Plate	Yellow / block
Crystal Size [mm]	0.763 x 0.653 x 0.591	0.42 x 0.375 x 0.27	0.501 x 0.323 x 0.201	0.857 x 0.71 x 0.663
Crystal System	Monoclinic	Triclinic	Monoclinic	Triclinic
Space Group	P 1 21/c 1	P-1	C 1 2/c 1	P-1
<i>a</i> [Å]	8,3951(4)	6.3026(3)	8.464(2)	9.4462(2)
<i>b</i> [Å]	27.9304(11)	7.5073(3)	25.149(5)	11.9186(2)
<i>c</i> [Å]	8.7047(5)	18.3949(7)	10.370 (3)	19.0135(4)
α [°]	90	99.553(3)	90	83.182(2)
β [°]	106.182(5)	90.722(4)	104.500(5)	76.177(2)
γ [°]	90	94.046(4)	90	79.585(2)
<i>V</i> [Å ³]	1960.20(17)	855.89(6)	2137.2(8)	2038.00(7)
<i>Z</i>	4	2	4	4
<i>R</i> [F ² > 2s(F ²)] [a]	0.0444	0.0529	0.0508	0.0362
<i>wR</i> ₂ (F ²) [b]	0.1162	0.1739	0.1478	0.0962

[a] $R = \sum ||F_o| - |F_c|| / \sum |F_o|$. [b] $wR = \{[\sum w(|F_o| - |F_c|)] / \sum w|F_o|\}^{1/2}$.

4. DFT calculation

Table S2. Dipole moment (debye) of all derivatives at franck-condon state.

	Dipole moment (debye)
CBZ-F	X = 0.0000 / Y = 0.0000 / Z = -27.3303 Tot = 27.3303
CBZ-H	X = 0.0000 / Y = 0.0000 / Z = -19.4571 Tot = 19.4571
PIP-F	X = -28.6317 / Y = -0.1896 / Z = 0.5683 Tot = 28.6379
PIP-H	X = -25.9340 / Y = 0.1709 / Z = -0.5371 Tot = 25.9401
PTZ-F	X = -37.1484 / Y = 0.0000 / Z = -1.3418 Tot = 37.1726
PTZ-H	X = 29.1970 / Y = 0.0000 / Z = -1.3936 Tot = 29.2302

Table S3. Cartesian coordinate for **CBZ-F** at the optimized geometry in S_0 state.

No.	Atom	Type	Coordinates (Angstroms)			23	6	0	-8.470498	0	0
			X	Y	Z	24	7	0	-9.627056	0	0
1	6	0	-6.325002	-1.009219	0.648346	25	6	0	4.862922	1.087669	0.316647
2	6	0	-4.942223	-1.007255	0.647257	26	6	0	4.862922	-1.087669	-0.316647
3	6	0	-4.216086	0	0	27	6	0	4.503792	2.372292	0.734615
4	6	0	-4.942223	1.007255	-0.647257	28	6	0	6.215361	0.695691	0.203416
5	6	0	-6.325002	1.009219	-0.648346	29	6	0	4.503792	-2.372292	-0.734615
6	6	0	-7.040324	0	0	30	6	0	6.215361	-0.695691	-0.203416
7	6	0	-2.796471	0	0	31	6	0	5.531504	3.266336	1.01484
8	9	0	-4.29625	1.986908	-1.27572	32	1	0	3.465308	2.665456	0.844371
9	9	0	-6.977627	1.983993	-1.273584	33	6	0	7.230947	1.612967	0.491131
10	9	0	-6.977627	-1.983993	1.273584	34	6	0	5.531504	-3.266336	-1.01484
11	9	0	-4.29625	-1.986908	1.27572	35	1	0	3.465308	-2.665456	-0.844371
12	6	0	-0.154951	0	0	36	6	0	7.230947	-1.612967	-0.491131
13	6	0	0.55094	-0.996546	0.692781	37	6	0	6.882416	2.897613	0.890871
14	6	0	0.55094	0.996546	-0.692781	38	1	0	5.280976	4.271304	1.339318
15	6	0	1.938897	-0.990548	0.699584	39	1	0	8.274083	1.322589	0.407523
16	1	0	0.006169	-1.762129	1.234675	40	6	0	6.882416	-2.897613	-0.890871
17	6	0	1.938897	0.990548	-0.699584	41	1	0	5.280976	-4.271304	-1.339318
18	1	0	0.006169	1.762129	-1.234675	42	1	0	8.274083	-1.322589	-0.407523
19	6	0	2.636173	0	0	43	1	0	7.65736	3.62258	1.116393
20	1	0	2.488065	-1.74289	1.256244	44	1	0	7.65736	-3.62258	-1.116393
21	1	0	2.488065	1.74289	-1.256244	45	7	0	4.04854	0	0
22	6	0	-1.584369	0	0						

Table S4. Cartesian coordinate for **CBZ-H** at the optimized geometry in S₀ state.

No.	Atom	Type	Coordinates (Angstroms)			23	6	0	-0.825617	-0.886699	-0.999403
			X	Y	Z						
1	6	0	-3.01277	0.347214	-5.942111	25	6	0	-0.832644	-0.88045	0.3893
2	6	0	-3.396685	0.400768	-4.590574	26	1	0	-1.449757	-1.584456	-1.548507
3	6	0	-2.465286	0.288705	-3.564068	27	6	0	0.832644	0.88045	0.3893
4	6	0	-1.126064	0.114147	-3.924988	28	1	0	1.449757	1.584456	-1.548507
5	6	0	-0.721042	0.073694	-5.278095	29	6	0	0	0	1.098643
6	6	0	-1.67717	0.188847	-6.292427	30	1	0	-1.472512	-1.567174	0.933035
7	1	0	-3.76772	0.436392	-6.716162	31	1	0	1.472512	1.567174	0.933035
8	1	0	-4.443951	0.535259	-4.339153	32	6	0	0	0	2.530448
9	1	0	-2.771223	0.340627	-2.524681	33	6	0	0	0	3.743746
10	1	0	-1.37822	0.158907	-7.336067	34	6	0	0	0	5.174825
11	6	0	1.126064	-0.114147	-3.924988	35	6	0	-0.841527	-0.876297	5.880753
12	6	0	2.465286	-0.288705	-3.564068	36	6	0	0.841527	0.876297	5.880753
13	6	0	3.396685	-0.400768	-4.590574	37	6	0	-0.843185	-0.877966	7.267964
14	6	0	3.01277	-0.347214	-5.942111	38	1	0	-1.490184	-1.551808	5.334316
15	6	0	1.67717	-0.188847	-6.292427	39	6	0	0.843185	0.877966	7.267964
16	6	0	0.721042	-0.073694	-5.278095	40	1	0	1.490184	1.551808	5.334316
17	1	0	2.771223	-0.340627	-2.524681	41	6	0	0	0	7.961301
18	1	0	4.443951	-0.535259	-4.339153	42	1	0	-1.491441	-1.553038	7.815425
19	1	0	3.76772	-0.436392	-6.716162	43	1	0	1.491441	1.553038	7.815425
20	1	0	1.37822	-0.158907	-7.336067	44	6	0	0	0	9.400583
21	7	0	0	0	-3.111426	45	7	0	0	0	10.558887
22	6	0	0	0	-1.697023						

Table S5. Cartesian coordinate for **PIP-F** at the optimized geometry in S_0 state.

No.	Atom	Type	Coordinates (Angstroms)			20	1	0	-3.765713	-2.136335	0.208937
			X	Y	Z						
1	6	0	-7.517135	-1.077746	-0.618561	21	6	0	-1.860094	1.204299	-0.198644
2	6	0	-6.055852	1.053701	0.674743	22	1	0	-3.759416	2.145031	-0.367267
3	6	0	-7.484705	1.278818	0.194916	23	6	0	-1.142974	0.001812	-0.051522
4	6	0	-8.265659	-0.033497	0.20611	24	1	0	-1.328854	-2.129376	0.206148
5	1	0	-7.499275	-0.769414	-1.671158	25	1	0	-1.319395	2.137817	-0.317672
6	1	0	-8.017856	-2.049868	-0.569467	26	6	0	0.281481	0.000442	-0.039176
7	1	0	-6.069911	0.725386	1.729597	27	6	0	1.495664	0.001375	-0.027699
8	1	0	-5.496323	1.986784	0.632243	28	6	0	2.912724	0.000962	-0.013131
9	1	0	-7.959621	2.024437	0.84048	29	6	0	3.640869	-1.195026	0.041855
10	1	0	-7.459247	1.687916	-0.822661	30	6	0	3.642846	1.196357	-0.052251
11	1	0	-8.36565	-0.387286	1.241388	31	6	0	5.022887	-1.197905	0.056662
12	1	0	-9.277314	0.112771	-0.184643	32	6	0	5.024857	1.198067	-0.036698
13	6	0	-6.078087	-1.247754	-0.135963	33	6	0	5.740979	-0.00021	0.017879
14	1	0	-5.556278	-1.930762	-0.809517	34	7	0	-5.371361	0.031981	-0.132139
15	1	0	-6.072061	-1.696803	0.874212	35	6	0	7.170368	-0.000747	0.033646
16	6	0	-3.979061	0.006281	-0.075767	36	7	0	8.327089	-0.001213	0.046426
17	6	0	-3.251951	-1.193203	0.07488	37	9	0	2.998153	2.360976	-0.104582
18	6	0	-3.241687	1.205642	-0.212742	38	9	0	5.678389	2.355829	-0.073419
19	6	0	-1.863802	-1.193176	0.081409	39	9	0	5.674461	-2.356232	0.107891
						40	9	0	2.994198	-2.359089	0.080076

Table S6. Cartesian coordinate for **PIP-H** at the optimized geometry in S₀ state.

No.	Atom	Type	Coordinates (Angstroms)			20	6	0	-1.126057	-1.115214	-0.454796
			X	Y	Z						
1	6	0	-5.659684	1.053212	1.227757	21	1	0	-3.025086	-2.045457	-0.596059
2	6	0	-5.374555	1.276221	-0.26085	22	6	0	-1.08791	1.2877	-0.427553
3	6	0	-5.372088	-1.084007	-0.70431	23	1	0	-2.951647	2.281619	-0.588025
4	6	0	-5.657182	-1.433762	0.759615	24	6	0	-0.383182	0.072802	-0.382166
5	6	0	-6.398509	-0.27407	1.436245	25	1	0	-0.611067	-2.069933	-0.410226
6	1	0	-6.317721	1.319423	-0.818288	26	1	0	-0.54058	2.223729	-0.373245
7	1	0	-4.865234	2.22215	-0.436118	27	6	0	1.038999	0.048311	-0.26087
8	1	0	-4.705021	1.040107	1.770484	28	6	0	2.249731	0.027542	-0.157795
9	1	0	-6.248433	1.888564	1.621143	29	6	0	3.673466	0.003926	-0.036701
10	1	0	-6.319539	-0.912073	-1.229104	30	6	0	4.361638	-1.221749	0.009169
11	1	0	-4.865742	-1.889519	-1.236909	31	6	0	4.398541	1.206666	0.038098
12	1	0	-6.247003	-2.354672	0.814583	32	6	0	5.743288	-1.24646	0.126799
13	1	0	-4.707226	-1.620578	1.277105	33	1	0	3.803802	-2.149842	-0.04849
14	1	0	-7.404115	-0.192793	1.000763	34	6	0	5.780228	1.186666	0.155768
15	1	0	-6.528936	-0.474934	2.504221	35	1	0	3.869263	2.152419	0.002815
16	7	0	-4.601232	0.156699	-0.810517	36	6	0	6.45415	-0.041107	0.200195
17	6	0	-3.225453	0.122398	-0.627524	37	1	0	6.273941	-2.191572	0.16219
18	6	0	-2.507703	-1.095623	-0.56748	38	1	0	6.339445	2.114035	0.213431
19	6	0	-2.466874	1.315167	-0.544033	39	6	0	7.887256	-0.064395	0.321609
						40	7	0	9.041559	-0.083272	0.419468

Table S7. Cartesian coordinate for **PTZ-F** at the optimized geometry in S_0 state.

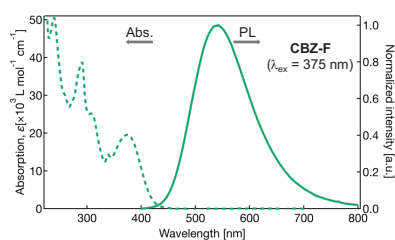
No.	Atom	Type	Coordinates (Angstroms)			23	6	0	-2.329554	0	0.145108
			X	Y	Z						
1	6	0	-4.419673	-3.56341	-0.717872	24	6	0	-1.618145	-0.000004	1.342712
2	6	0	-3.742406	-2.363864	-0.502946	25	6	0	-1.654138	0.000004	-1.07885
3	6	0	-4.425555	-1.230246	-0.042475	26	6	0	-0.226919	-0.000004	1.325254
4	6	0	-5.803565	-1.342225	0.208168	27	1	0	-2.162925	-0.000007	2.281121
5	6	0	-6.481074	-2.532582	-0.046049	28	6	0	-0.266275	0.000004	-1.105155
6	6	0	-5.791684	-3.654155	-0.503065	29	1	0	-2.222587	0.000007	-2.004554
7	6	0	-5.803566	1.342223	0.208175	30	6	0	0.455838	0	0.100283
8	6	0	-4.425555	1.230246	-0.042468	31	1	0	0.334112	-0.000006	2.253495
9	6	0	-3.742407	2.363867	-0.502933	32	1	0	0.265585	0.000007	-2.050428
10	1	0	-2.675741	2.320027	-0.684965	33	6	0	1.886614	0	0.0771
11	6	0	-4.419675	3.563414	-0.717852	34	6	0	3.098077	0	0.05813
12	6	0	-5.791686	3.654157	-0.503045	35	6	0	4.518134	0	0.038568
13	6	0	-6.481075	2.532581	-0.046035	36	6	0	5.227734	0.000001	-1.168314
14	1	0	-3.861529	-4.426791	-1.064976	37	6	0	5.259273	0	1.226362
15	1	0	-2.67574	-2.320022	-0.684978	38	6	0	6.610517	0	-1.188728
16	1	0	-7.549854	-2.58011	0.139955	39	6	0	6.642091	-0.000001	1.21045
17	1	0	-6.321463	-4.583483	-0.681271	40	6	0	7.34112	0	0.001474
18	1	0	-3.861531	4.426797	-1.064951	41	6	0	8.771302	0	-0.017331
19	1	0	-6.321465	4.583486	-0.681246	42	7	0	9.927706	0	-0.032659
20	1	0	-7.549855	2.580107	0.139969	43	9	0	4.62853	-0.000001	2.398222
21	7	0	-3.76276	0	0.198459	44	9	0	7.309798	-0.000001	2.359608
22	16	0	-6.665709	-0.000003	0.97962	45	9	0	7.247877	0.000001	-2.355031
						46	9	0	4.566377	0.000001	-2.323207

Table S8. Cartesian coordinate for **PTZ-H** at the optimized geometry in S_0 state.

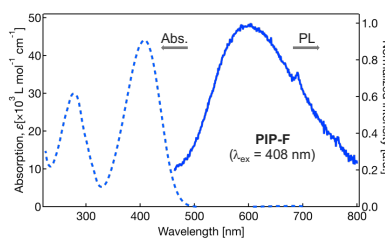
No.	Atom	Type	Coordinates (Angstroms)			23	6	0	1.416349	0.001726	0.147358
			X	Y	Z						
1	6	0	3.511218	3.567265	-0.700187	24	6	0	0.705631	-0.010972	1.344988
2	6	0	2.83241	2.367952	-0.489132	25	6	0	0.737776	0.013644	-1.074455
3	6	0	3.514764	1.230294	-0.037007	26	6	0	-0.686037	-0.011711	1.328831
4	6	0	4.893709	1.339196	0.210681	27	1	0	1.251142	-0.020579	2.283116
5	6	0	5.572728	2.529483	-0.039957	28	6	0	-0.650489	0.013688	-1.097613
6	6	0	4.884141	3.654594	-0.489441	29	1	0	1.30409	0.022807	-2.001608
7	6	0	4.88958	-1.345151	0.198925	30	6	0	-1.37475	0.000825	0.106899
8	6	0	3.511179	-1.229322	-0.048378	31	1	0	-1.244476	-0.02179	2.2587
9	6	0	2.825238	-2.360122	-0.512125	32	1	0	-1.182754	0.023175	-2.042737
10	1	0	1.758297	-2.312808	-0.691702	33	6	0	-2.807297	0.000458	0.085385
11	6	0	3.499978	-3.559822	-0.7337	34	6	0	-4.020147	0.00026	0.06715
12	6	0	4.872374	-3.653977	-0.522354	35	6	0	-5.451416	0.000193	0.047944
13	6	0	5.564612	-2.535459	-0.062149	36	6	0	-6.141125	0.043818	-1.175296
14	1	0	2.95349	4.433408	-1.041114	37	6	0	-6.172356	-0.043439	1.253029
15	1	0	1.765112	2.326358	-0.667816	38	6	0	-7.528271	0.0441	-1.195473
16	1	0	6.642147	2.574143	0.143166	39	6	0	-7.559524	-0.043419	1.237634
17	1	0	5.415078	4.58381	-0.664822	40	6	0	-8.23679	0.000481	0.012189
18	1	0	2.939569	-4.420762	-1.083295	41	6	0	-9.675985	0.000856	-0.006205
19	1	0	5.400155	-4.583449	-0.705726	42	7	0	-10.834153	0.001176	-0.021042
20	1	0	6.633756	-2.585532	0.121153	43	1	0	-5.637927	-0.077348	2.195858
21	7	0	2.850255	0.000361	0.19793	44	1	0	-8.119074	-0.077177	2.165805
22	16	0	5.755622	-0.007698	0.974337	45	1	0	-8.063692	0.077907	-2.137777
						46	1	0	-5.582591	0.077604	-2.104057

5. Photophysical Characteristics

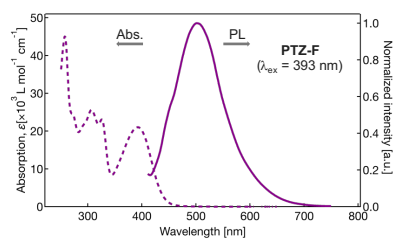
(a) CBZ-F



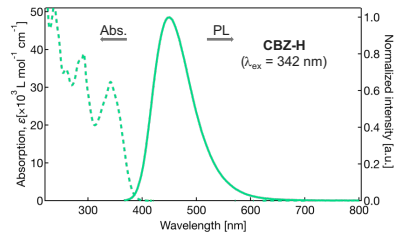
(b) PIP-F



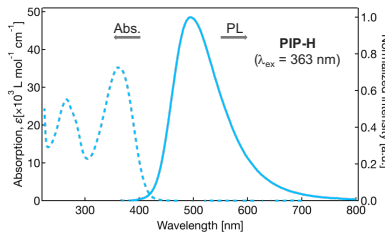
(c) PTZ-F



(d) CBZ-H



(e) PIP-H



(f) PTZ-H

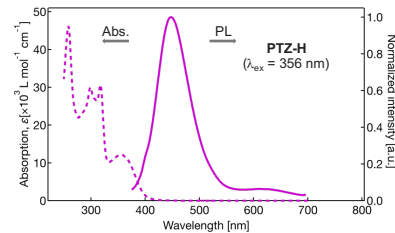
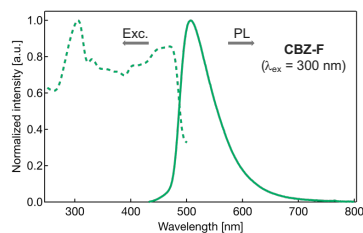
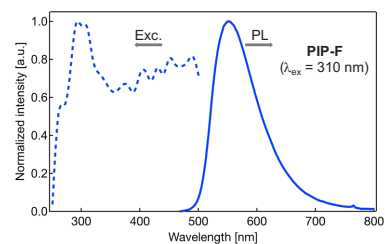


Figure S16. UV-vis and PL spectra of all derivatives in CH_2Cl_2 solution. Concentration: $1.0 \times 10^{-5} \text{ mol L}^{-1}$ for UV-vis and PL.

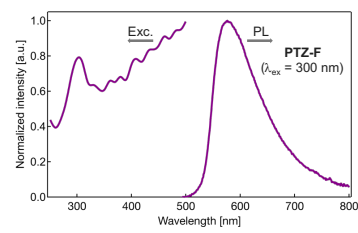
(a) CBZ-F



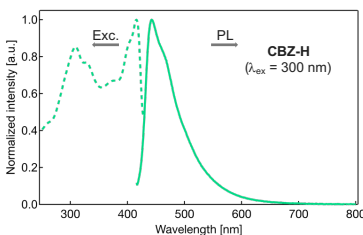
(b) PIP-F



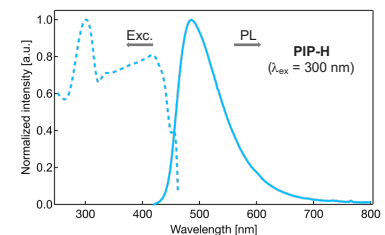
(c) PTZ-F



(d) CBZ-H



(e) PIP-H



(f) PTZ-H

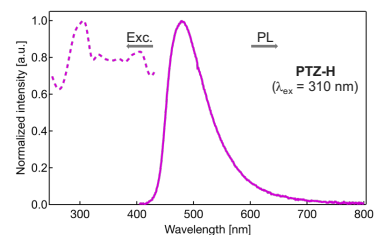
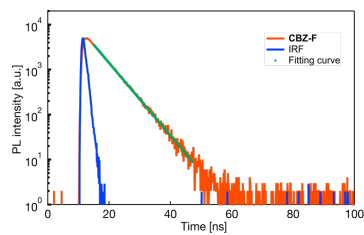
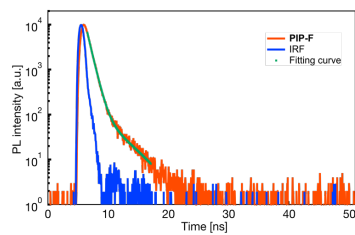


Figure S17. Excitation and PL spectra of all derivatives in crystalline state. Excitation spectra were obtained by monitoring PL at the maximum wavelength.

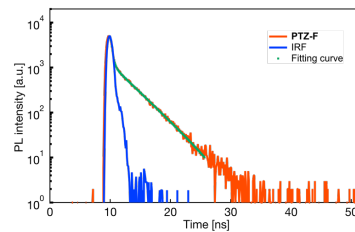
(a) CBZ-F



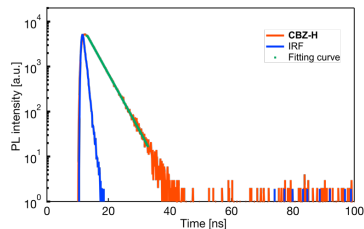
(b) PIP-F



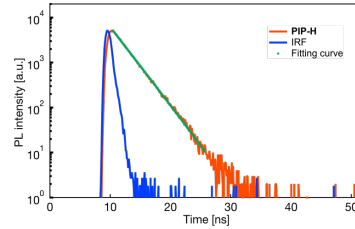
(c) PTZ-F



(d) CBZ-H



(e) PIP-H



(f) PTZ-H

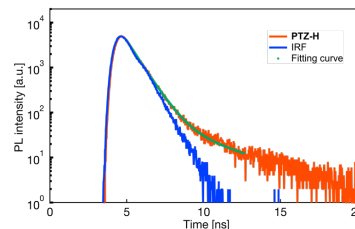
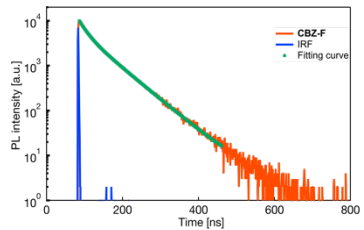
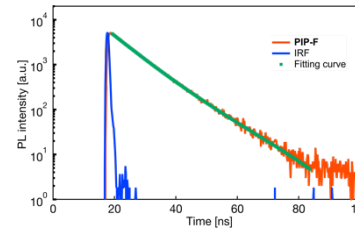


Figure S18. PL decay curve of all derivatives in CH_2Cl_2 solution. They were measured by monitoring PL at maximum wavelength ($\lambda_{\text{PL}} = 542$ nm for **CBZ-F**, 447 nm for **CBZ-H**, 603 nm for **PIP-F**, 496 nm for **PIP-H**, 501 nm for **PTZ-F**, 447 nm for **PTZ-H**). Concentration: 1.0×10^{-5} mol L^{-1} .

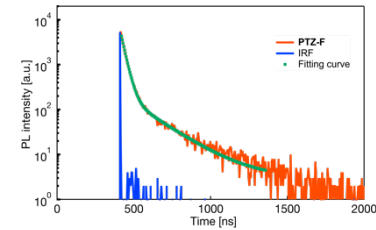
(a) CBZ-F



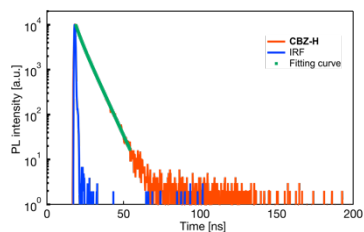
(b) PIP-F



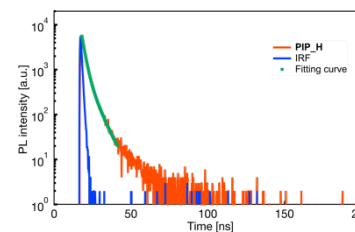
(c) PTZ-F



(d) CBZ-H



(e) PIP-H



(f) PTZ-H

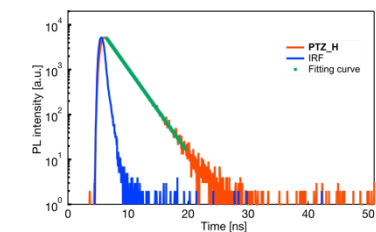


Figure S19. PL decay curve of all derivatives in crystalline state. They were measured by monitoring PL at maximum wavelength ($\lambda_{\text{PL}} = 507$ nm for **CBZ-F**, 442 nm for **CBZ-H**, 551 nm for **PIP-F**, 485 nm for **PIP-H**, 575 nm for **PTZ-F**, 478 nm for **PTZ-H**).

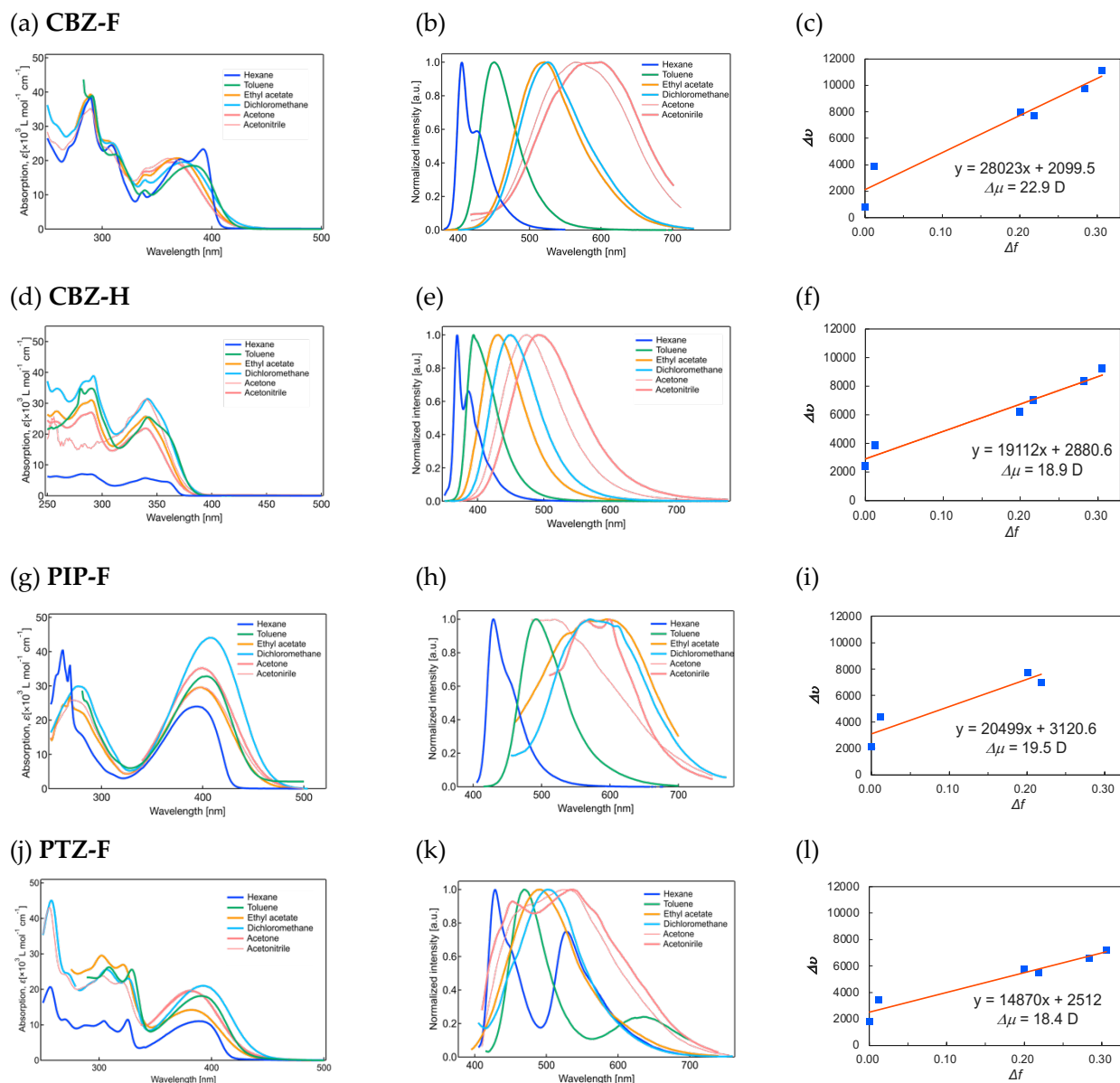


Figure S20. UV-vis and PL spectra of **CBZ-F**, **CBZ-H**, **PIP-F**, **PTZ-F** in various solvents. Concentration: 1.0×10^{-5} mol L⁻¹ for UV-vis and PL. Lippert-Mataga plot of **CBZ-F**, **CBZ-H**, **PIP-F**, **PTZ-F**.

Table S9. Photophysical properties of **CBZ-F** in various solvents.

Solvent	λ_{abs} [nm]	λ_{PL} [nm]	Φ_{PL}
Hexane	392	405	0.85
Toluene	383	450	0.92
Ethyl acetate	368	521	0.55
Dichloromethane	375	526	0.65
Acetone	364	564	0.03
Acetonitrile	360	580	0.01

Table S10. Photophysical properties of **CBZ-H** in various solvents.

Solvent	λ_{abs} [nm]	λ_{PL} [nm]	Φ_{PL}
Hexane	339	369	0.8
Toluene	342	394	0.95
Ethyl acetate	340	430	0.99
Dichloromethane	341	447	1.0
Acetone	340	473	0.77
Acetonitrile	340	494	0.82

Table S11. Photophysical properties of **PIP-F** in various solvents.

Solvent	λ_{abs} [nm]	λ_{PL} [nm]	Φ_{PL}
Hexane	394	430	0.47
Toluene	404	491	0.37
Ethyl acetate	398	577	0.01
Dichloromethane	408	572	0.02
Acetone	399	-	<0.01
Acetonitrile	400	-	<0.01

Table S12. Photophysical properties of **PTZ-F** in various solvents.

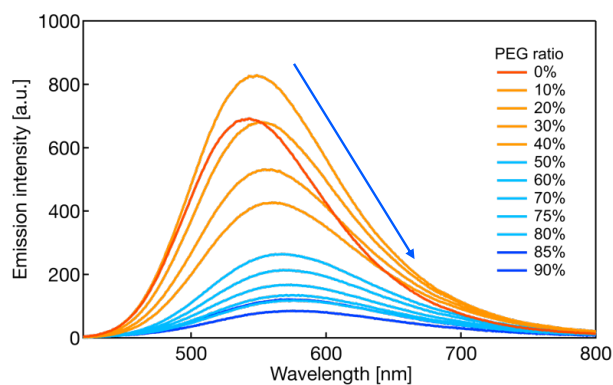
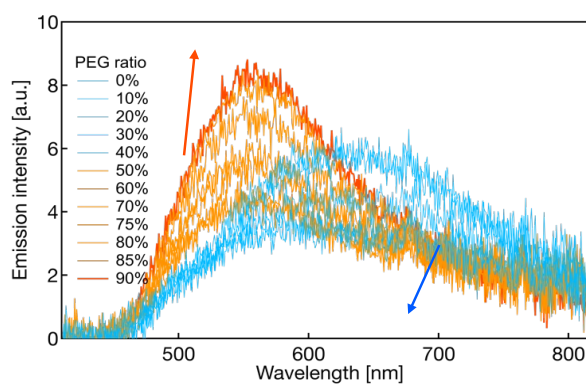
Solvent	λ_{abs} [nm]	λ_{PL} [nm]	Φ_{PL}
Hexane	389	418	0.06
Toluene	391	452	0.03
Ethyl acetate	382	490	<0.01
Dichloromethane	393	501	<0.01
Acetone	382	511	<0.01
Acetonitrile	381	524	<0.01

Table S13. Photophysical properties of **CBZ-F** in THF/H₂O mixed solution.

Water ration [%]	PL intensity [a.u.]	Quantum yield [-]	Peak wavelength [nm]
0	1158	0.63	542
10	145	0.11	572
20	70	0.06	580
30	47	0.04	577
40	33	0.03	580
50	22	0.02	588
60	22	0.02	588
70	713	0.36	481
75	697	0.44	550
80	568	0.42	543
85	1179	0.59	534
90	948	0.50	527

Table S14. Photophysical properties of **PIP-F** in THF/H₂O mixed solution.

Water ration [%]	PL intensity [a.u.]	Quantum yield [-]	Peak wavelength [nm]
0	8.74	0.01	n.d.
10	7.93	< 0.01	n.d.
20	8.55	< 0.01	n.d.
30	7.56	< 0.01	n.d.
40	6.96	< 0.01	n.d.
50	8.09	< 0.01	n.d.
60	7.33	< 0.01	n.d.
70	61.4	0.06	551
75	66.1	0.07	552
80	73.6	0.08	548
85	61.1	0.07	554
90	57.1	0.06	556

(a) **CBZ-F**(b) **PIP-F****Figure S21.** PL spectra of (a) **CBZ-F** and (b) **PIP-F** in THF/polyethylene glycol (PEG) mixed solution.**Table S15.** Photophysical properties of **CBZ-F** in THF/PEG mixed solution.

PEG ratio [%]	PL intensity [a.u.]	Quantum yield [-]	Peak wavelength [nm]
0	695	0.61	543
10	829	0.50	548
20	681	0.42	552
30	532	0.35	558
40	428	0.29	561
50	265	0.20	567
60	214	0.17	568
70	168	0.14	573
75	136	0.13	571
80	120	0.12	576
85	123	0.13	571
90	87	0.11	575

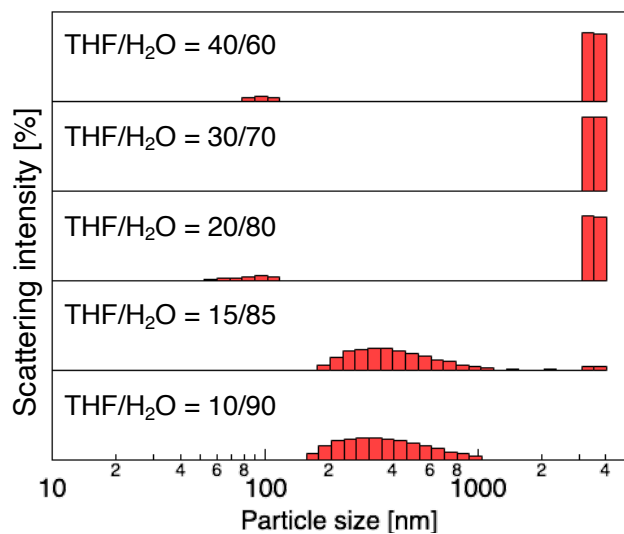
Table S16. Photophysical properties of **PIP-F** in THF/PEG mixed solution.

PEG ratio [%]	PL intensity [a.u.]	Quantum yield [-]	Peak wavelength [nm]
0	7.0	0.011	625
10	6.6	0.009	677
20	5.1	0.007	682
30	4.3	0.006	683
40	5.1	0.006	599
50	5.1	0.006	548
60	5.1	0.007	580
70	6.2	0.008	536
75	6.5	0.009	562
80	8.1	0.010	550
85	9.0	0.010	549
90	9.7	0.012	552

5. Dynamic light-scattering measurement

The particle size of nanocrystal and microcrystals formed in THF/H₂O solvent solution was measured using an ELSZ-1000 (Otsuka Electronics, Co., Ltd.).

(a) **CBZ-F**



(b) **PIP-F**

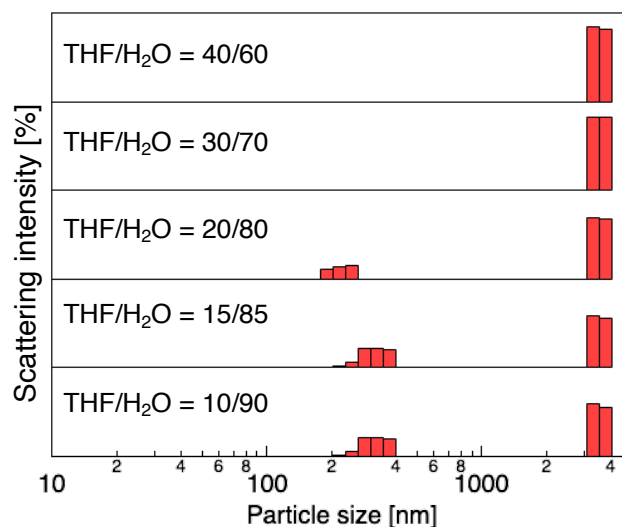


Figure S22. DLS profiles of (a) **CBZ-F** and (b) **PIP-F** in THF/H₂O mixed solution.