

GC-MS/MS Quantification of EGFR Inhibitors, β -Sitosterol, Betulinic acid, (+) Eriodictyol, (+) Epipinoresinol and Secoisolariciresinol, in Crude Extract and Ethyl Acetate Fraction of *Thonningia sanguinea*

Additional Experimental Detail

- Figure S1:** GC-MS/MS chromatograms of β -sitosterol in a standard solution (A), in the methanolic *T. sanguinea* crude extract (B) and its ethyl acetate fraction (C).
- Figure S2:** GC-MS/MS chromatograms of betulinic acid in a standard solution (A), in the methanolic *T. sanguinea* crude extract (B) and its ethyl acetate fraction (C).
- Figure S3:** GC-MS/MS chromatograms of eriodictyol in a standard solution (A), in the methanolic *T. sanguinea* crude extract (B) and its ethyl acetate fraction (C).
- Figure S4:** GC-MS/MS chromatograms of epipinoresinol in a standard solution (A), in the methanolic *T. sanguinea* crude extract (B) and its ethyl acetate fraction (C).
- Figure S5:** GC-MS/MS chromatograms of secoisolariciresinol in a standard solution (A), in the methanolic *T. sanguinea* crude extract (B) and its ethyl acetate fraction (C).

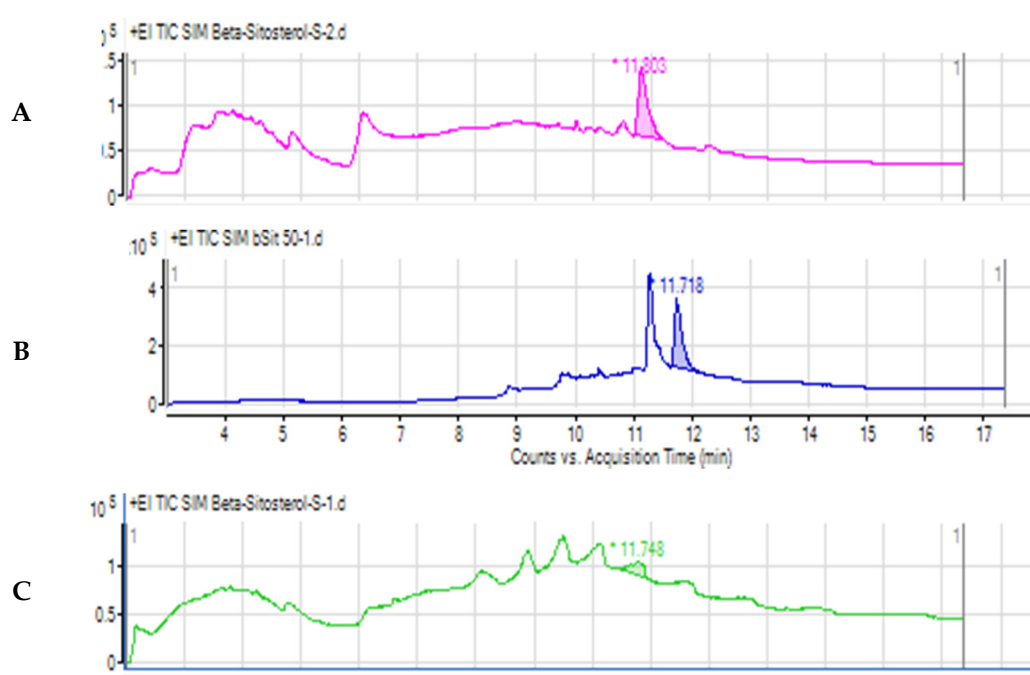


Figure S1. GC-MS/MS chromatograms of β -sitosterol in a standard solution (A), in the methanolic *T. sanguinea* crude extract (B) and its ethyl acetate fraction (C).

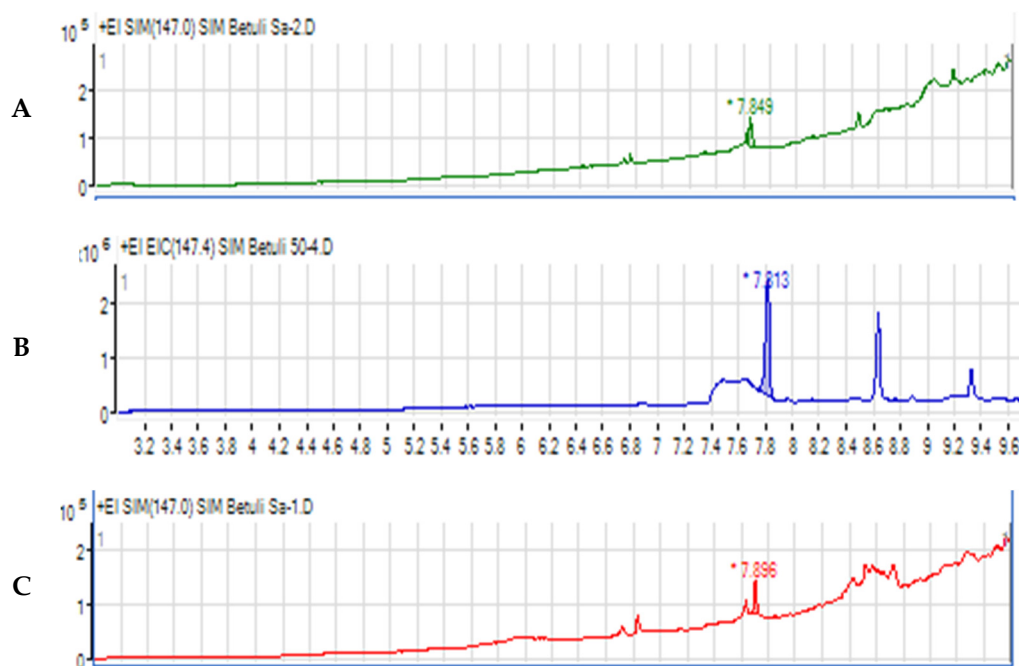


Figure S2. GC-MS/MS chromatograms of betulinic acid in a standard solution (A), in the methanolic *T. sanguinea* crude extract (B) and its ethyl acetate fraction (C).

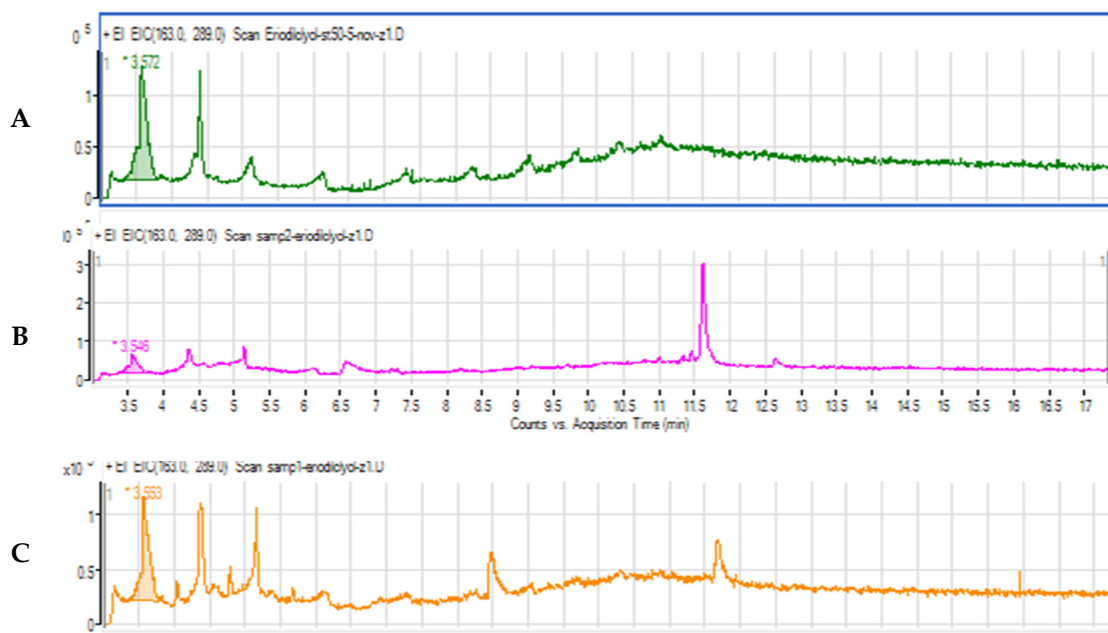
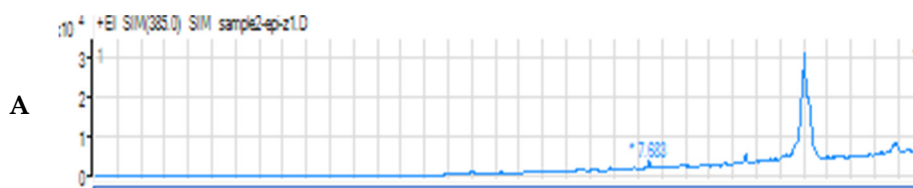


Figure S3. GC-MS/MS chromatograms of eriodictyol in a standard solution (A), in the methanolic *T. sanguinea* crude extract (B) and its ethyl acetate fraction (C).



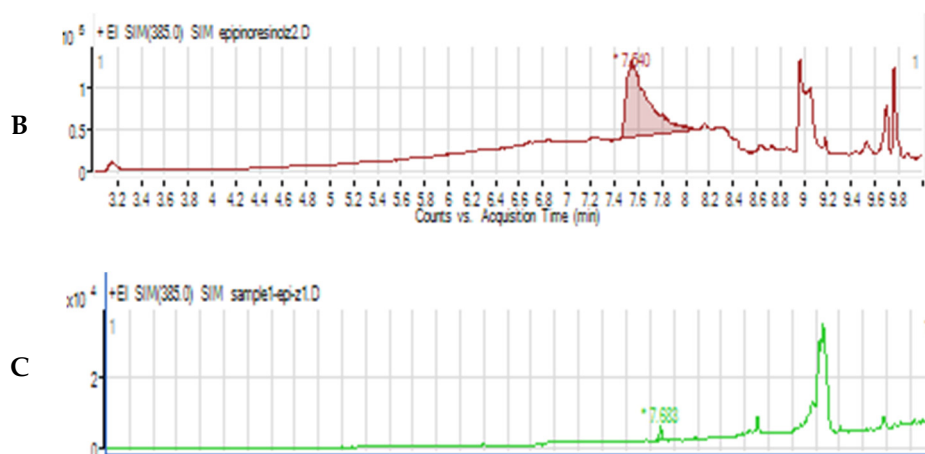


Figure S4. GC-MS/MS chromatograms of epipinoresinol in a standard solution (A), in the methanolic *T. sanguinea* crude extract (B) and its ethyl acetate fraction (C).

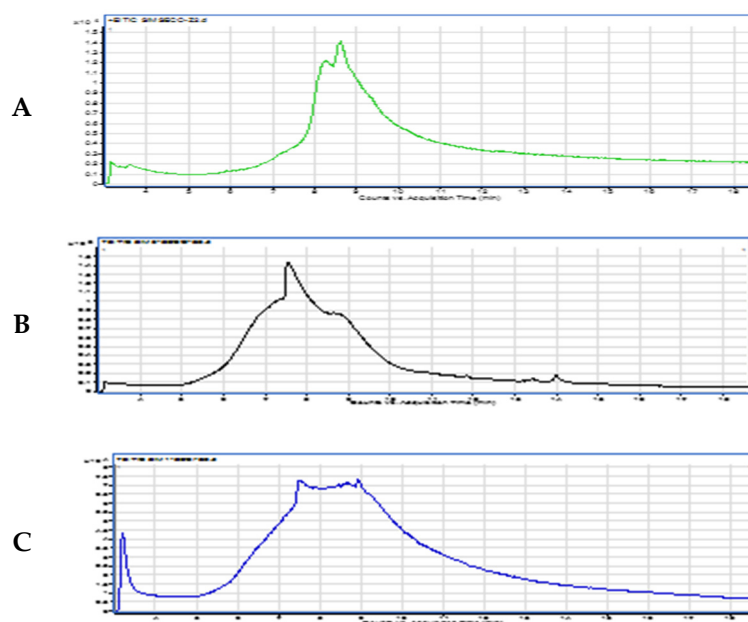


Figure S5. GC-MS/MS chromatograms of secoisolariciresinol in a standard solution (A), in the methanolic *T. sanguinea* crude extract (B) and its ethyl acetate fraction (C).