

The  $^1\text{H}$  NMR,  $^{13}\text{C}$  NMR and MS datas of intermediate 1 and probe S

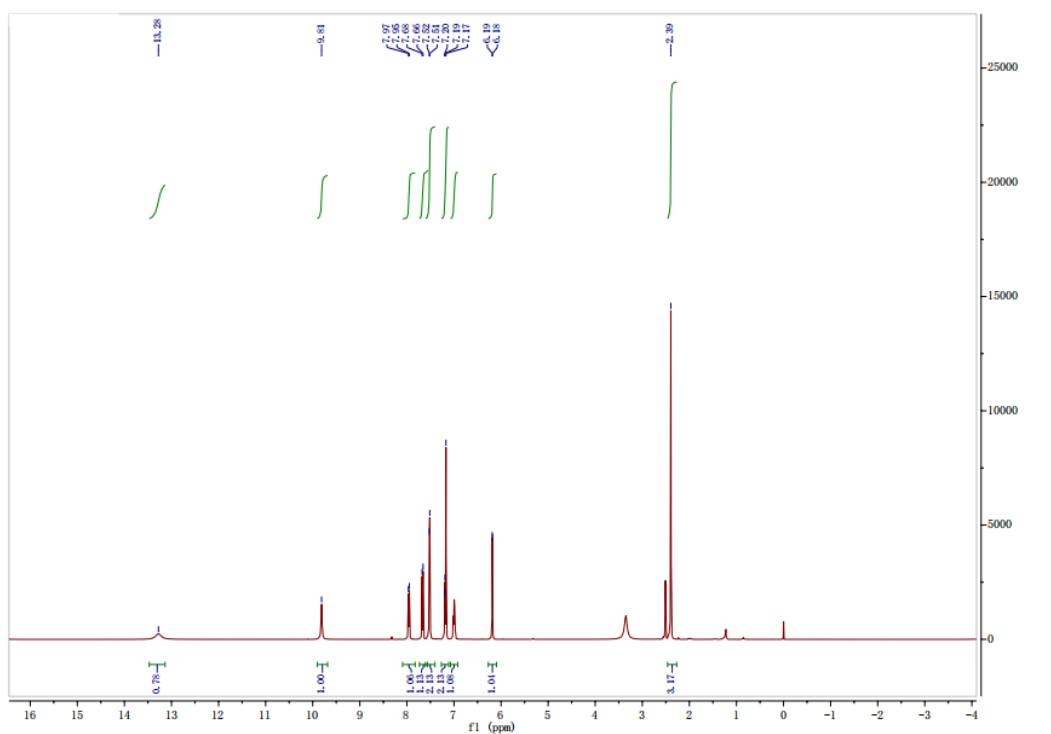


Figure S1 The  $^1\text{H}$  NMR of intermediate 1

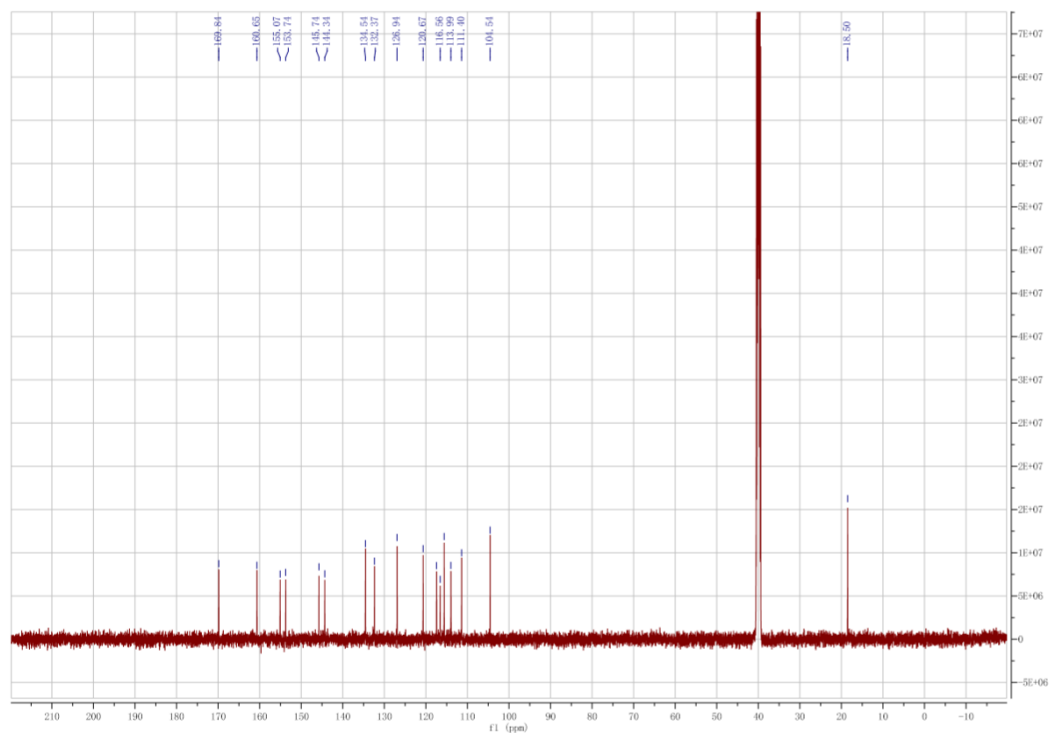


Figure S2 The  $^{13}\text{C}$ -NMR of intermediate 1

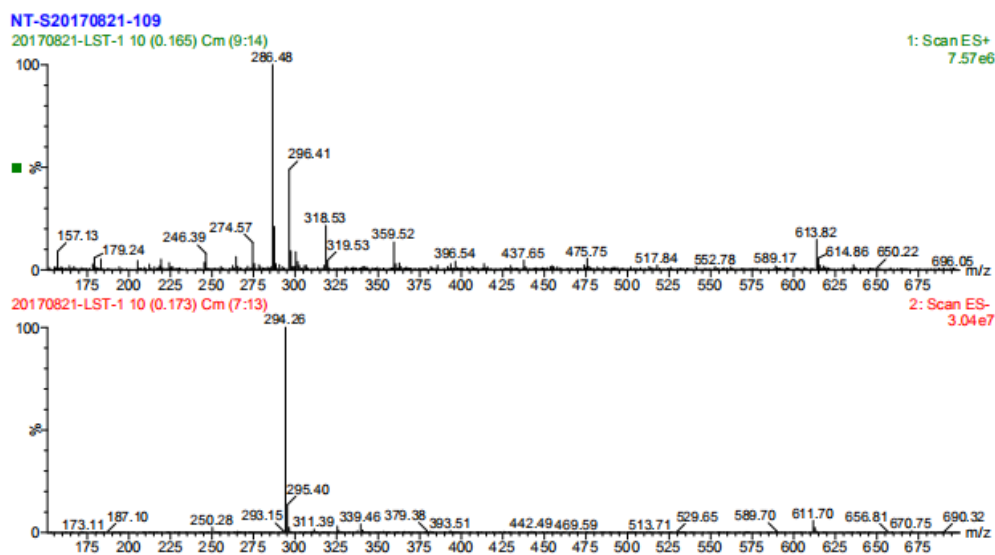


Figure S3 MS Spectrum of intermediate 1

## Generic Display Report

### Analysis Info

Acquisition data:30/08/2019

Analysis name:J-2

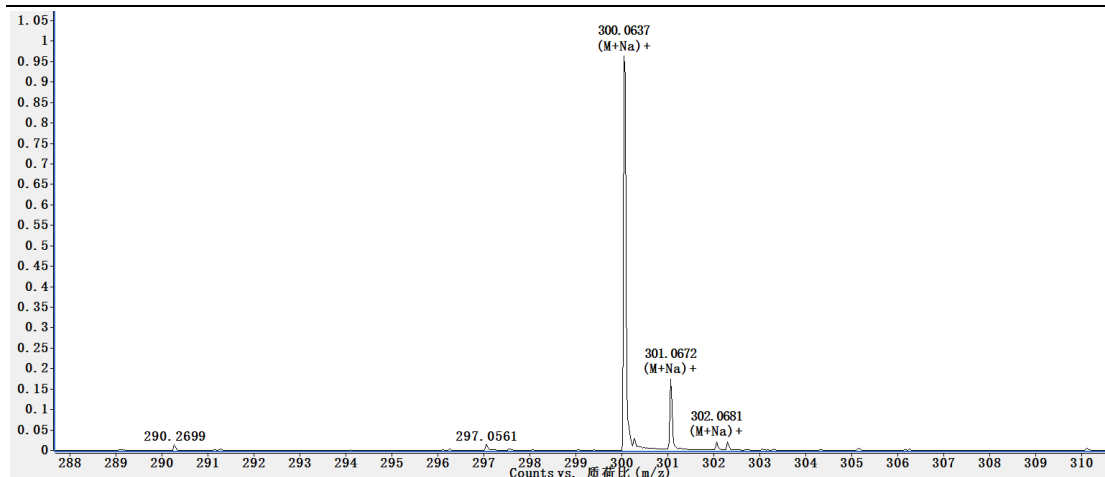
Method esi\_pos\_50-1000\_with calibration\_for 1min.m

operator: WHS

Sample Name:

Instrument: Agilent 6210 ESI/TOF MS

Comment



Calculated ms: 300.0631 found: 300.0637

Figure S4 HR-MS Spectrum of probe S

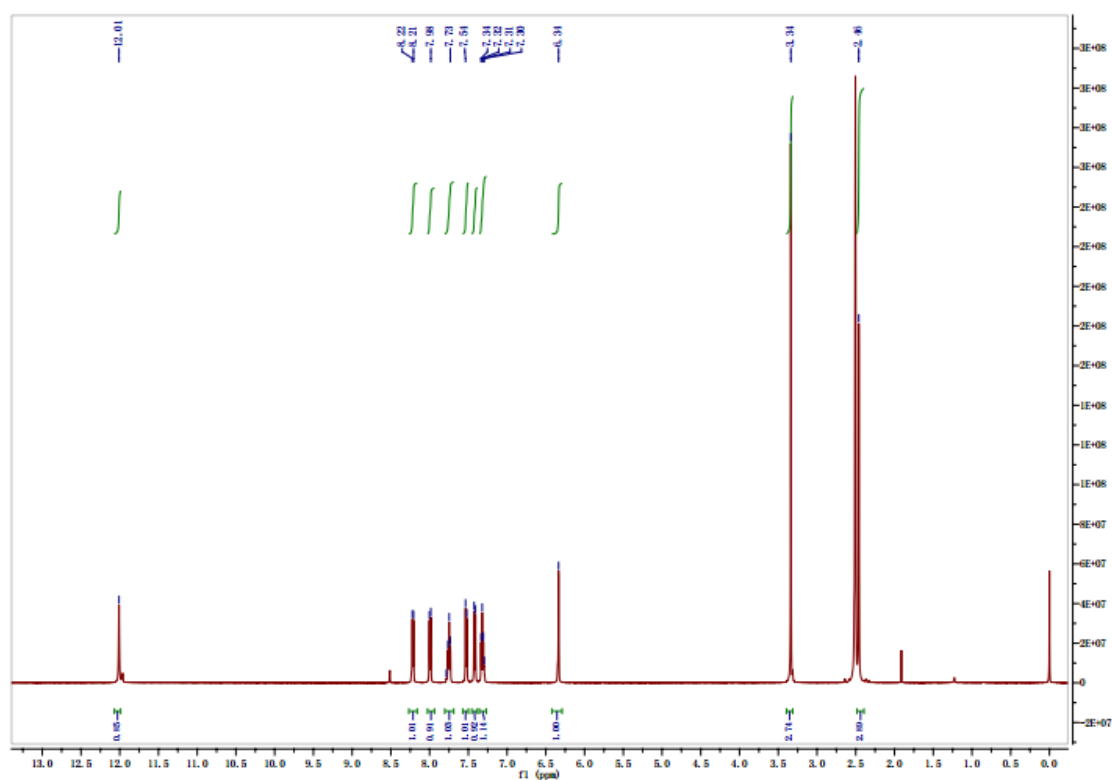


Figure S5 The <sup>1</sup>H NMR of probe S

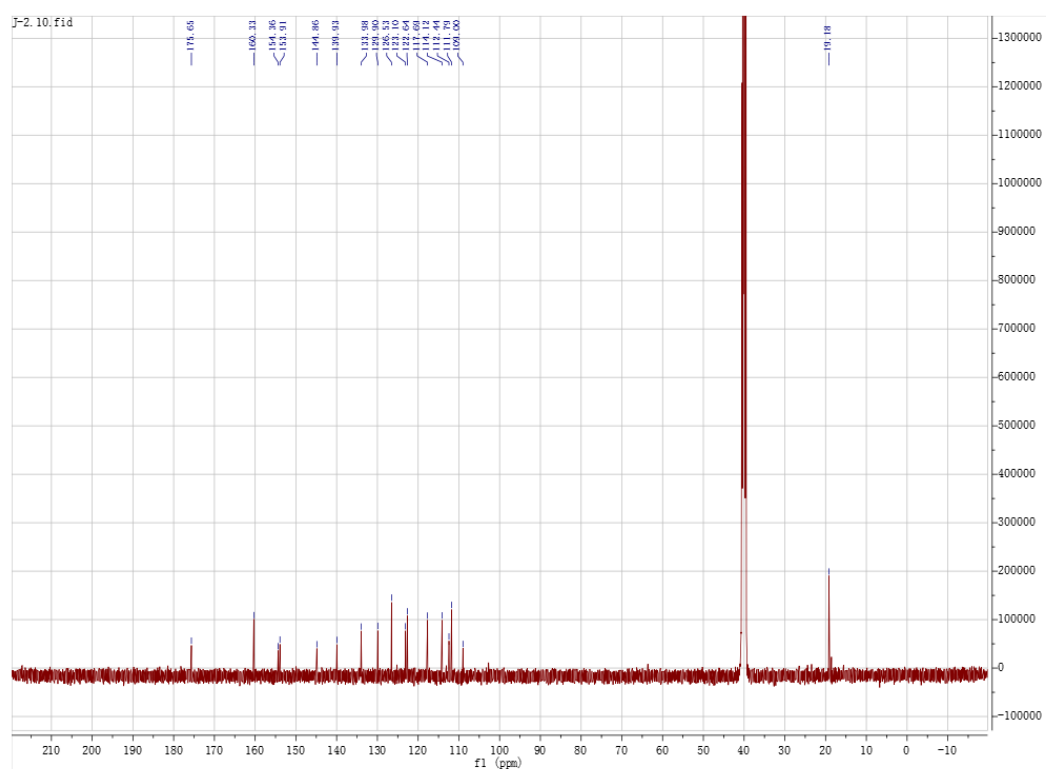


Figure S6 The <sup>13</sup>C-NMR of probe S