

RELATED INFORMATION

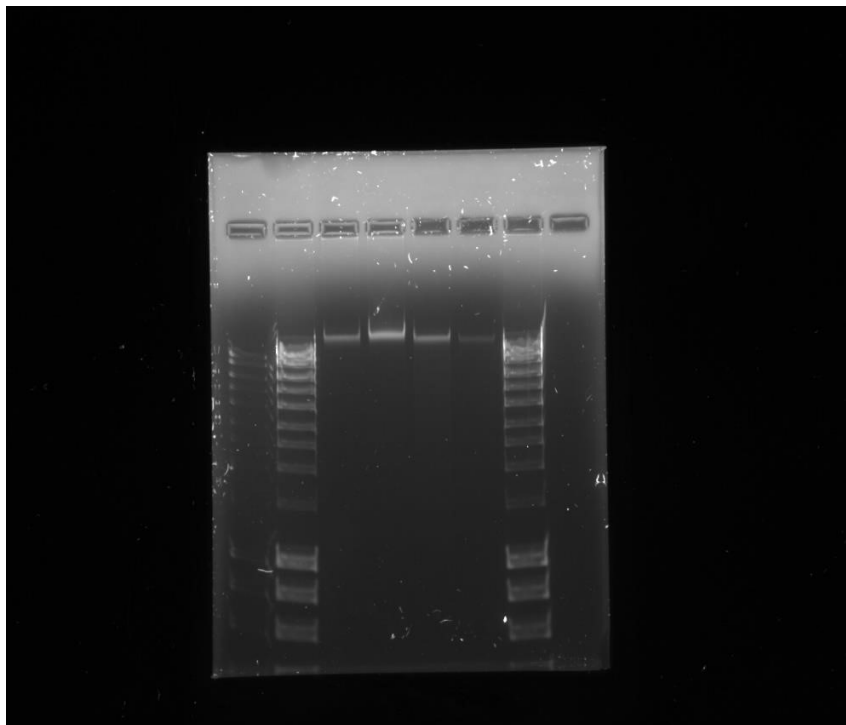


Figure S1. Original images of Gel Electrophoresis: The DNA extracted from ZnPcS4-mediated photodynamic therapy of the same concentration and different fluencies 5, 10, and 20 J/cm² were loaded Agarose gel electrophoresis. Lanes 1 and 6, were loaded with DNA hyper-ladder, and Lanes 2, 3, 4, and 5 with the untreated control, 5, 10, and 20 J/cm² fluencies, respectively.

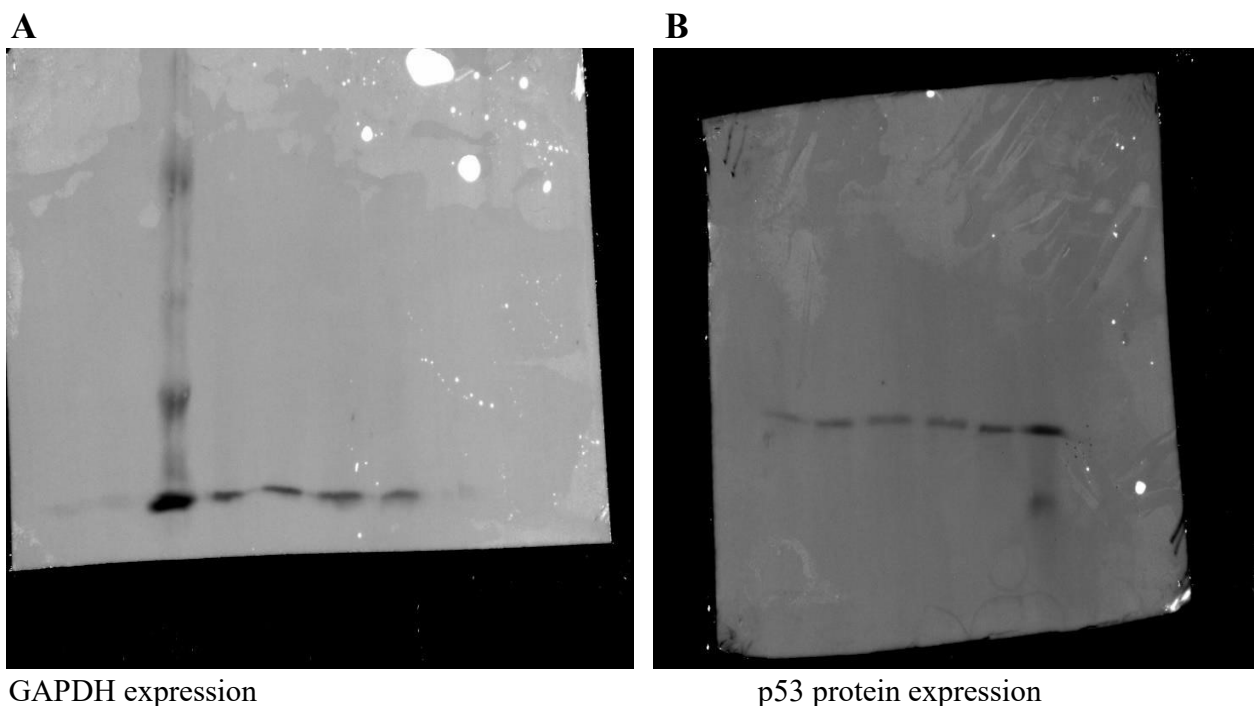


Figure S2. Original images of western blots for p53 and GAPDH: The GAPDH expression (**image A**) was used as the housekeeping gene and (**image B**) is the expression of p53 protein. The lanes are loaded with protein ladder, followed by untreated control, ZnPcS4-mediated PDT treated by 5, 10, and 20 J/cm² respectively. Protein expression in bands on SDS-Polyacrylamide gel was detected using ChemiDoc MP imaging system (Bio-Rad, USA).

Table S1. List of antibodies used in the study.

Antibody	Company	Cat. No.
Anti-p53 antibody	Merck South Africa	CBL 404
Goat anti-mouse antibody	Abcam South Africa	Ab97050
Anti-glyceraldehyde-3-phosphate dehydrogenase (GAPDH)	Invitrogen South Africa	MA5-15738
Goat anti-mouse HRP	Santa Cruz Biotechnology	SC-2005