

Supporting Information

A bifunctional peptide conjugate that controls infections of *Erwinia amylovora* in pear plants

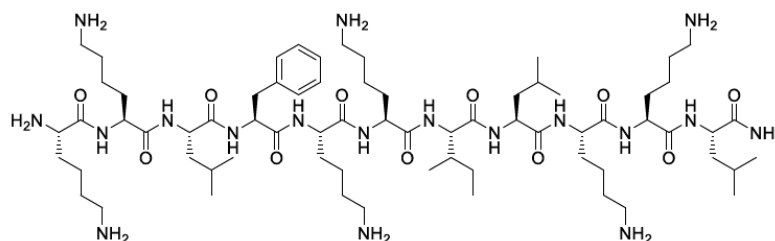
Pau Caravaca-Fuentes, Cristina Camó, Àngel Oliveras, Aina Baró, Jesús Francés, Esther
Badosa, Marta Planas, Lidia Feliu, Emilio Montesinos and Anna Bonaterra*

Table of contents:

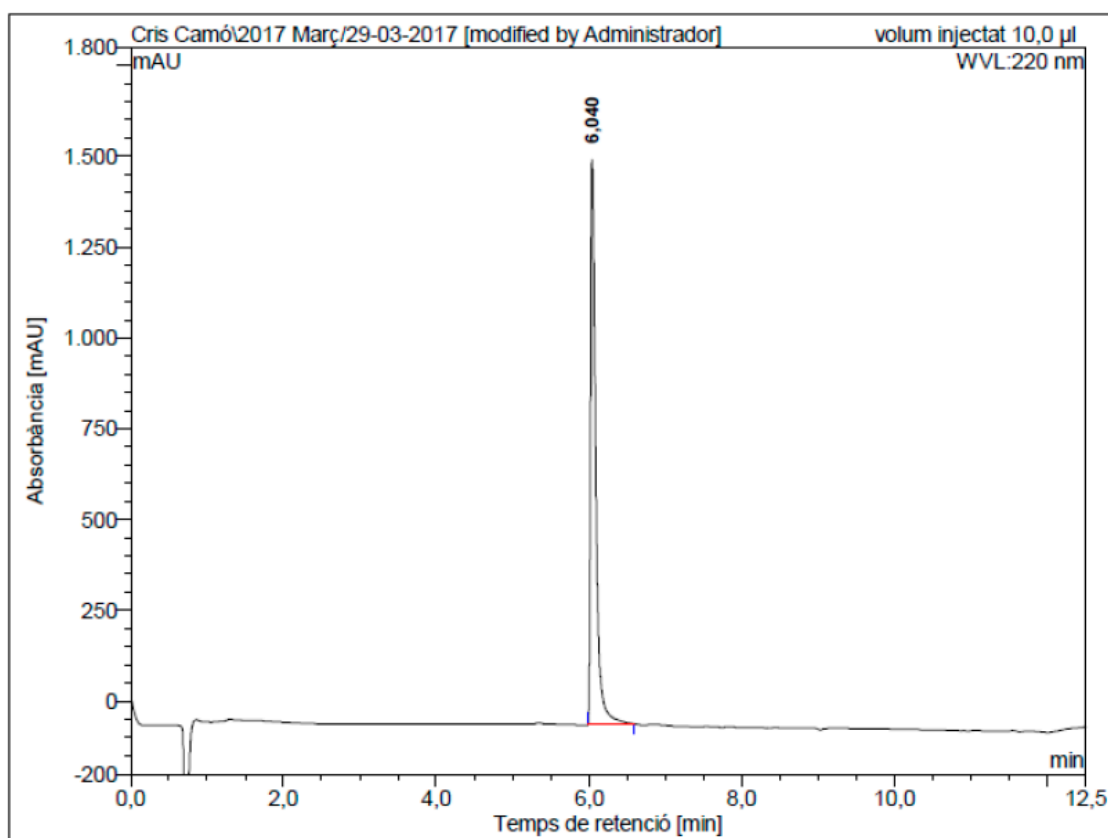
1. Characterization of peptides **BP16** and **flg15**: HPLC, ESI-MS and HRMS.....2
2. Characterization of peptide conjugates **BP358** and **BP359**: HPLC, ESI-MS and HRMS.....8

1. Characterization of peptides BP16 and flg15

Lys-Lys-Leu-Phe-Lys-Lys-Ile-Leu-Lys-Lys-Leu-NH₂ (BP16)

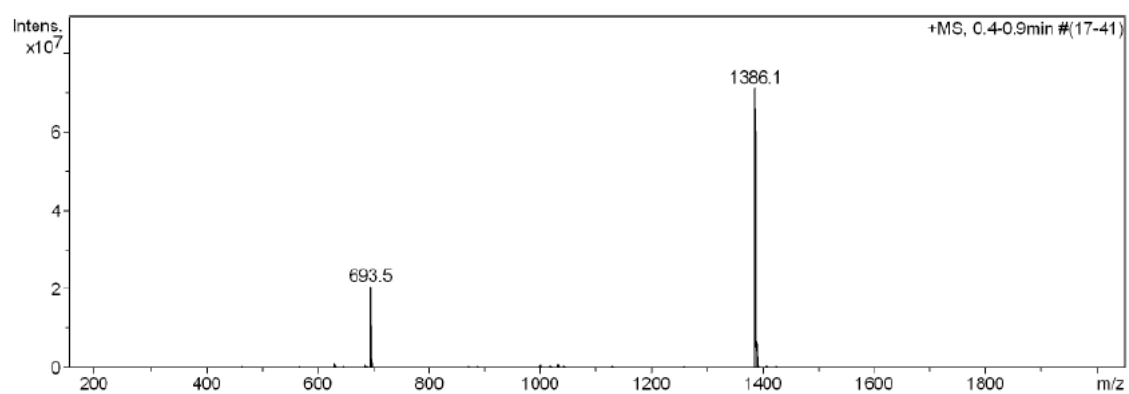


HPLC ($\lambda=220$ nm)

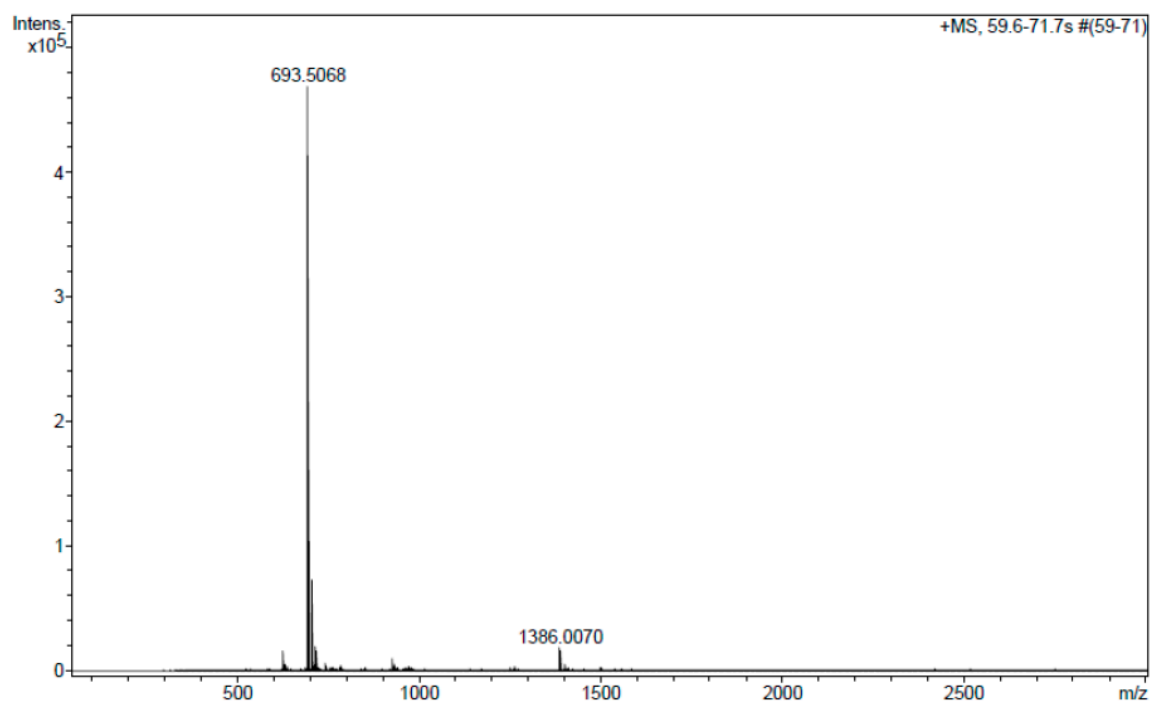


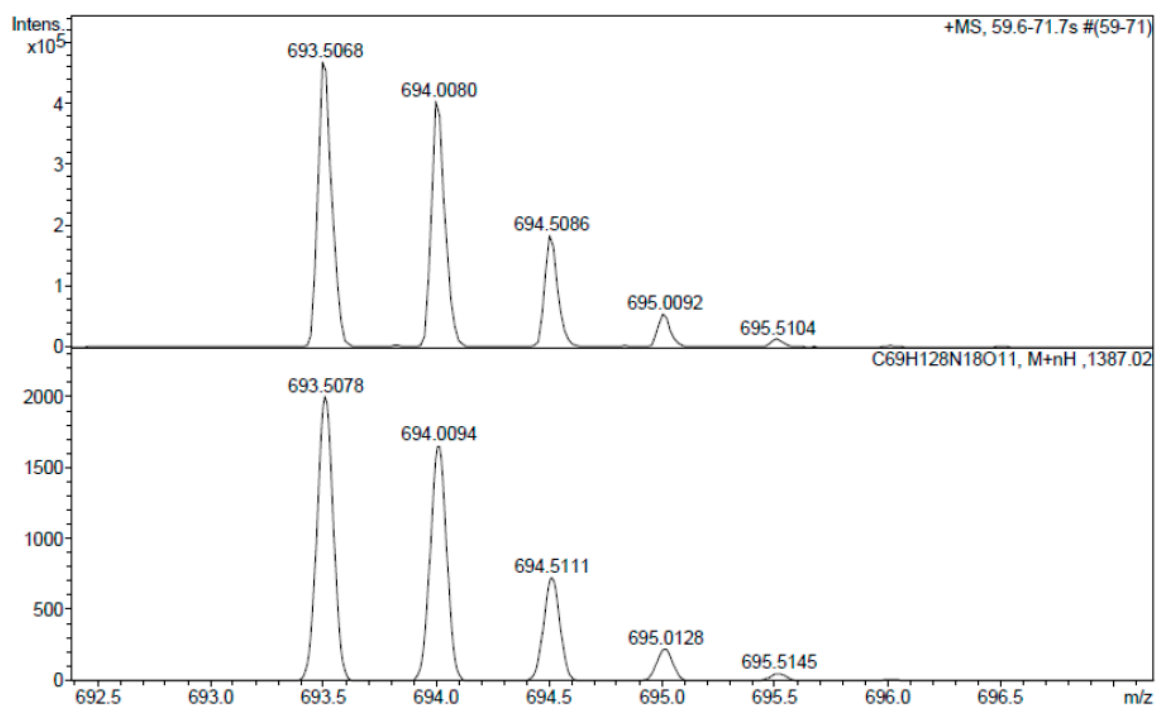
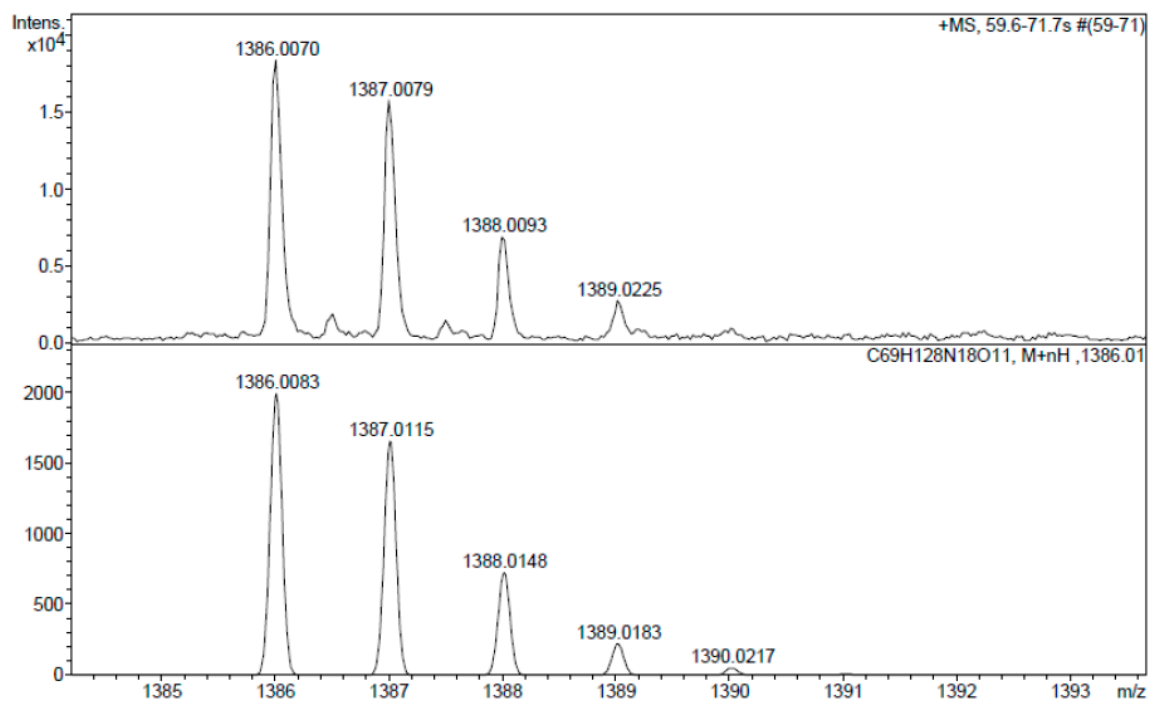
No.	Temps retenció min	alçada mAU	Area mAU*min	Area relativa %
1	6,04	1551,826	121,114	100,00
Total:		1551,826	121,114	100,00

ESI-MS (m/z)

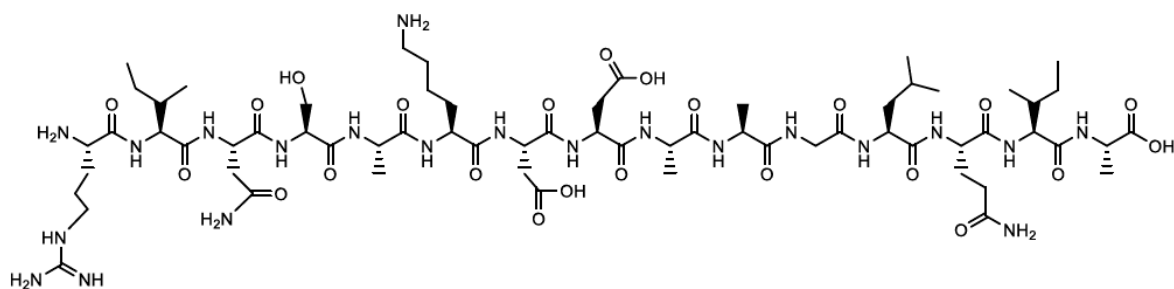


HRMS (m/z)

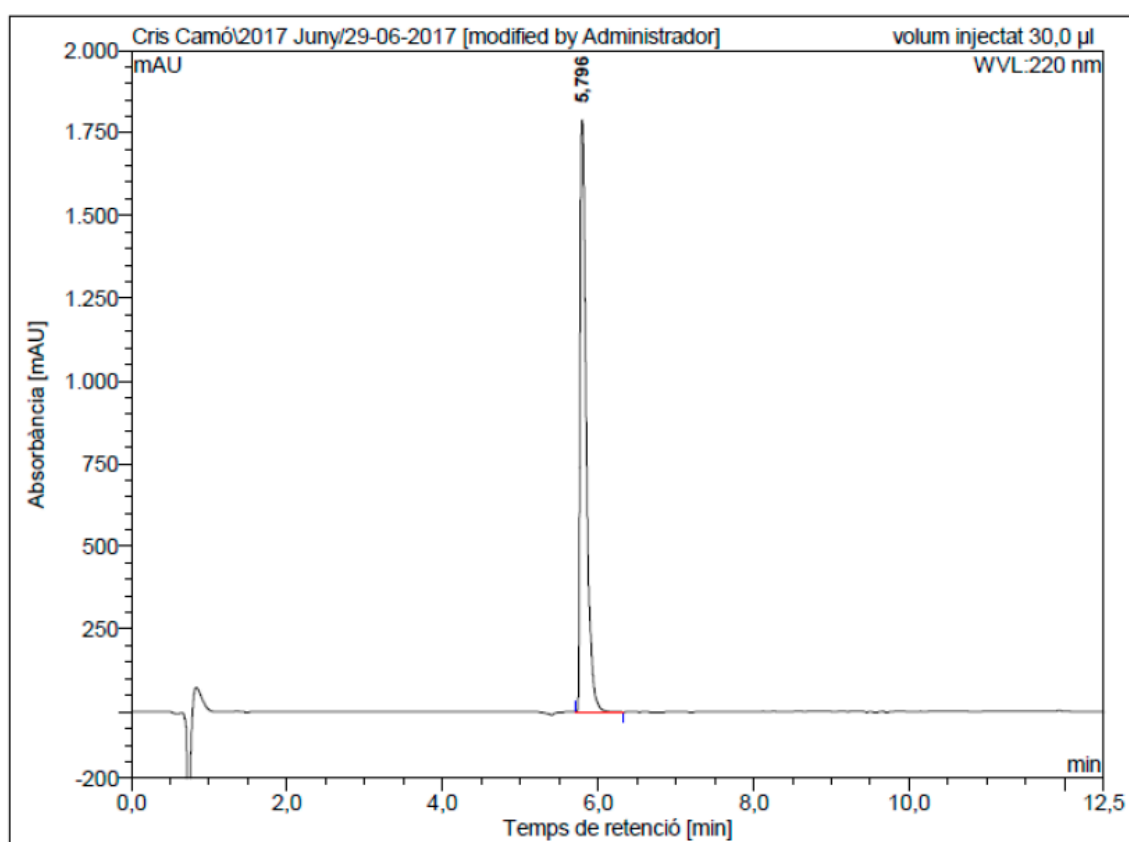




Arg-Ile-Asn-Ser-Ala-Lys-Asp-Asp-Ala-Ala-Gly-Leu-Gln-Ile-Ala-OH (flg15)

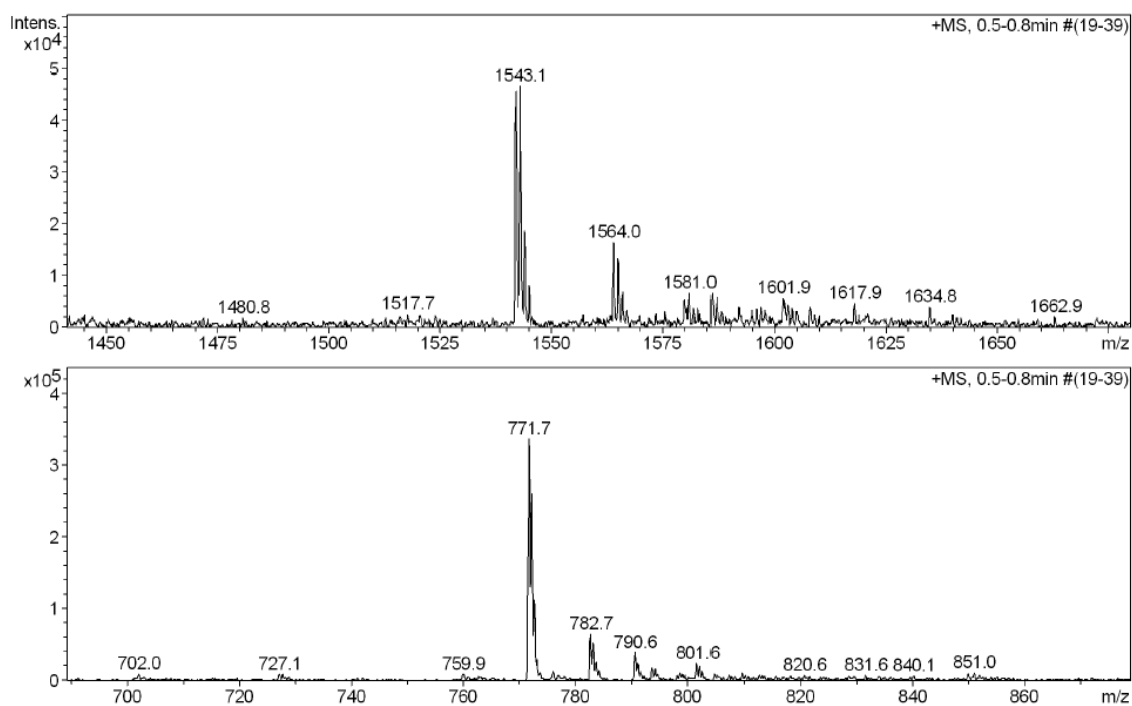


HPLC ($\lambda=220$ nm)

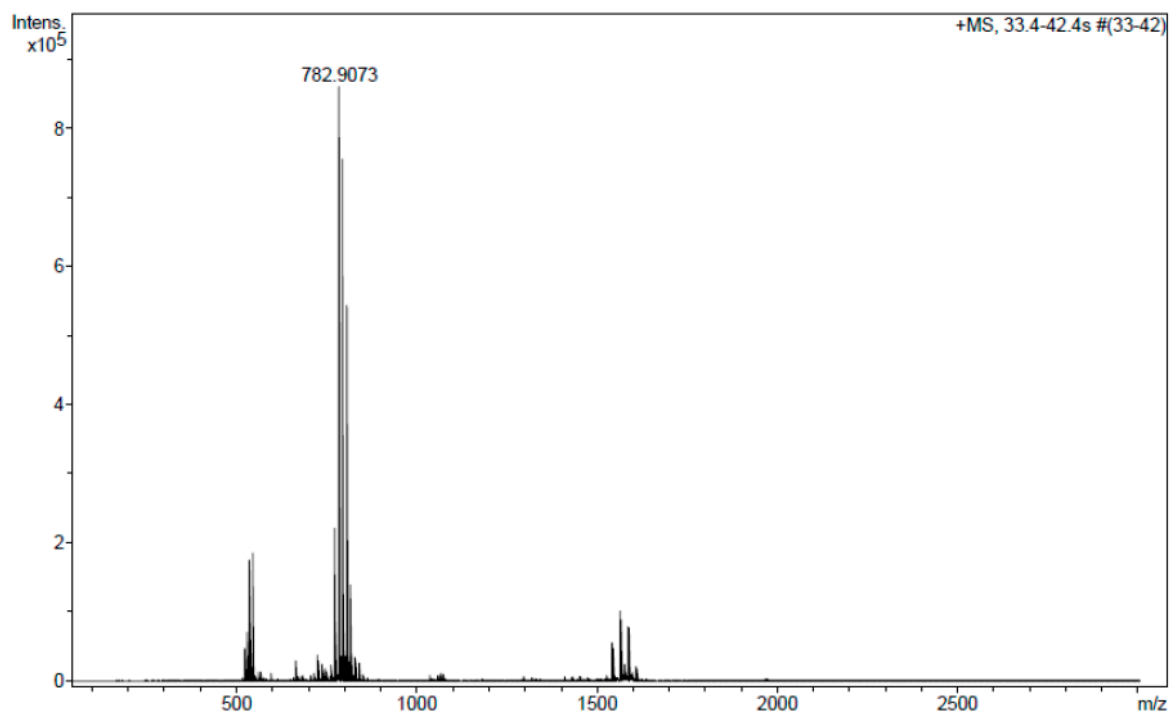


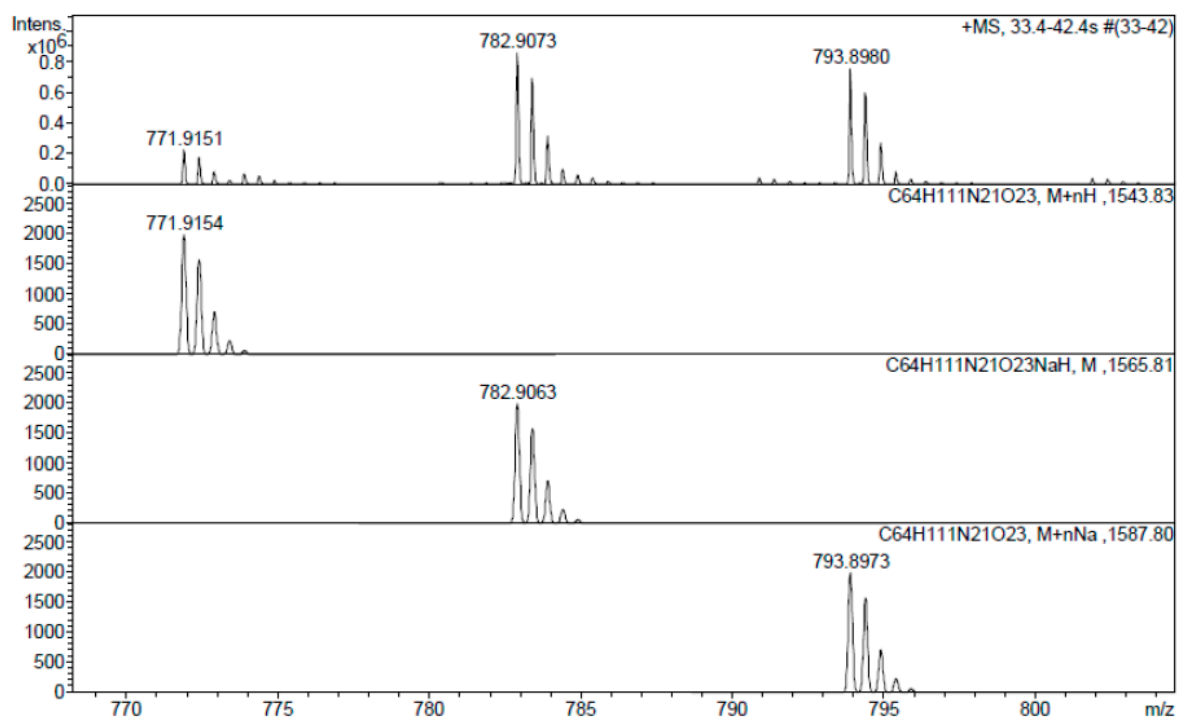
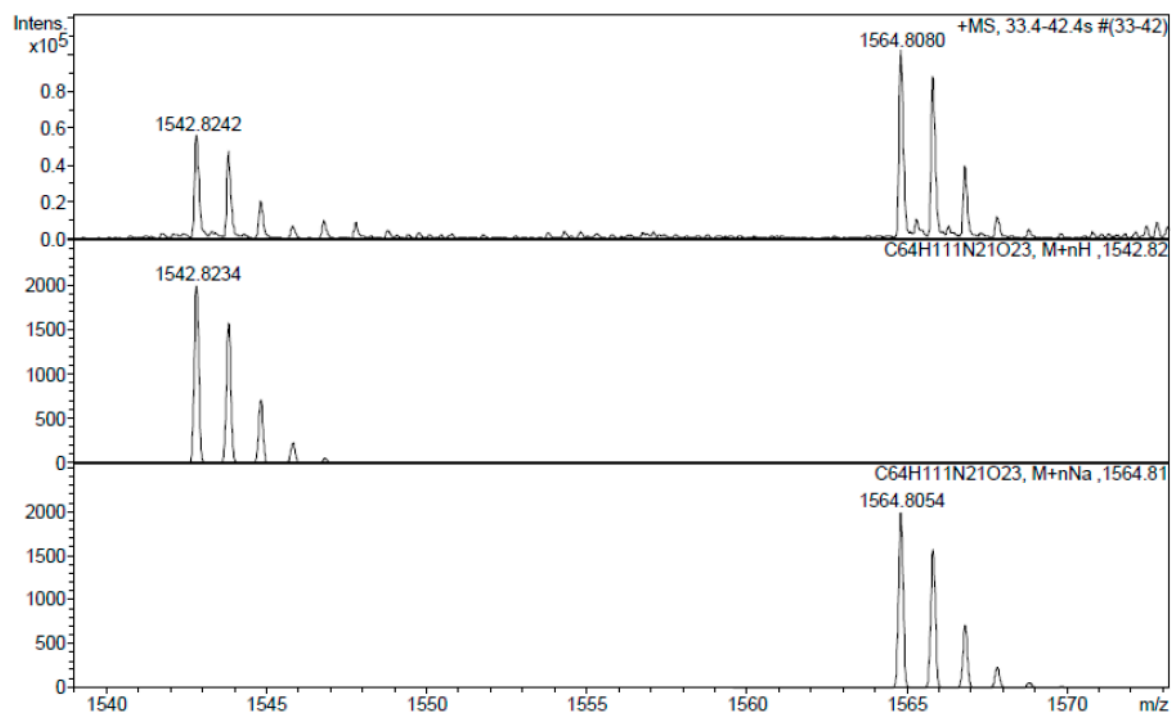
No.	Temps retenció min	alçada mAU	Area mAU*min	Area relativa %
1	5,80	1790,703	165,501	100,00
Total:		1790,703	165,501	100,00

ESI-MS (m/z)



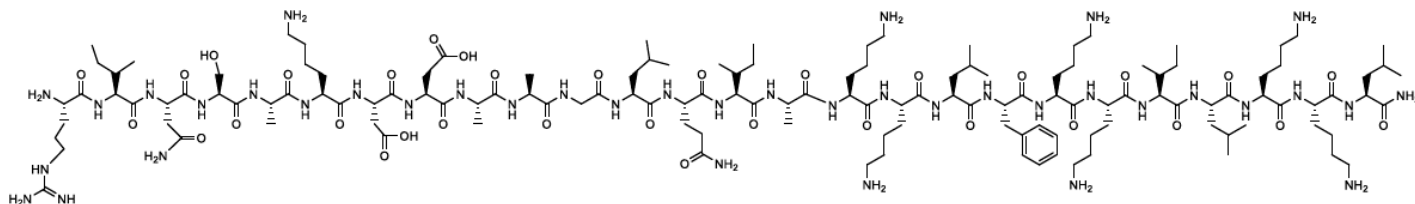
HRMS (m/z)



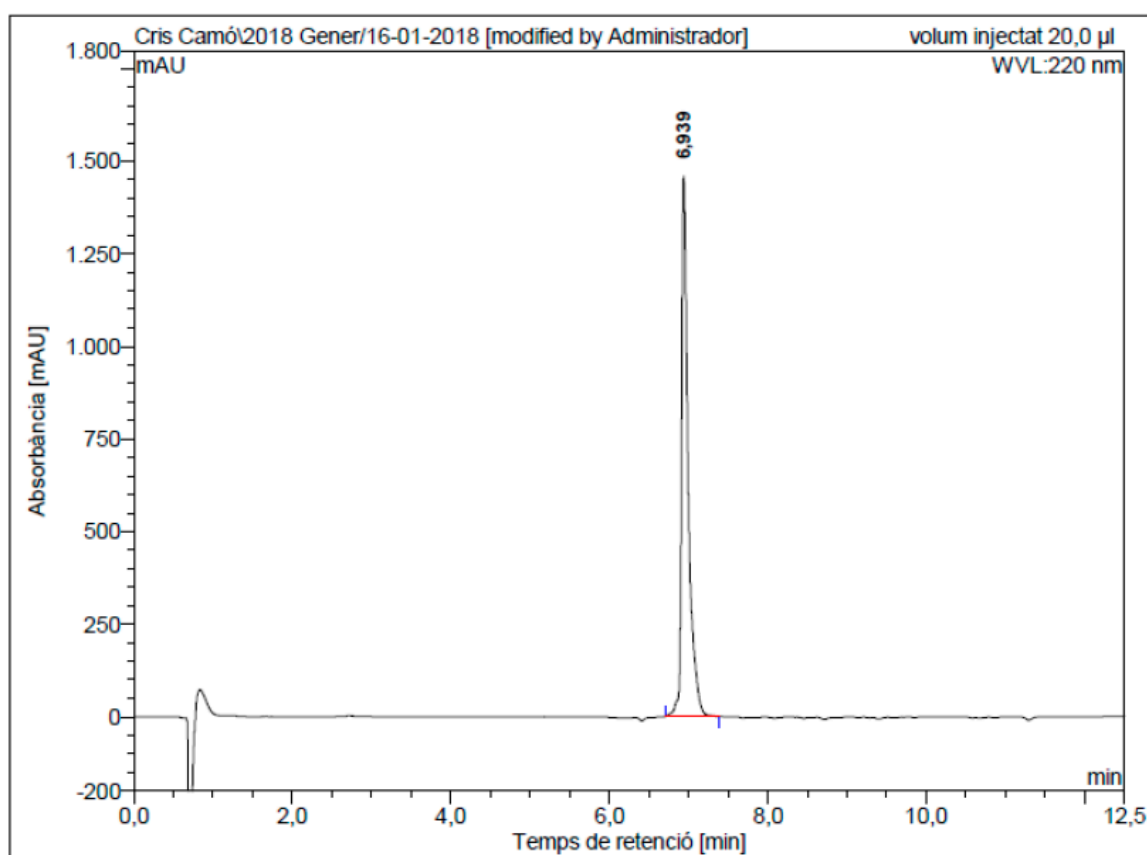


2. Characterization of peptide conjugates BP358 and BP359

Arg-Ile-Asn-Ser-Ala-Lys-Asp-Asp-Ala-Ala-Gly-Leu-Gln-Ile-Ala-Lys-Lys-Leu-Phe-Lys-Lys-Ile-Leu-Lys-Lys-Leu-NH₂ (BP358)

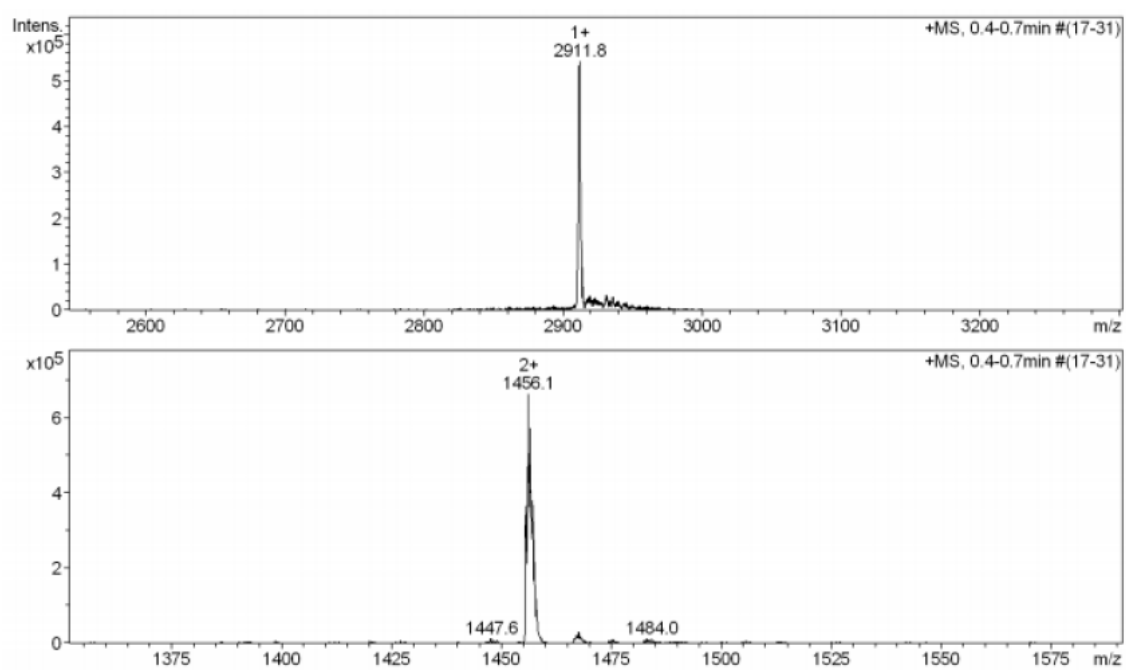


HPLC ($\lambda=220$ nm)

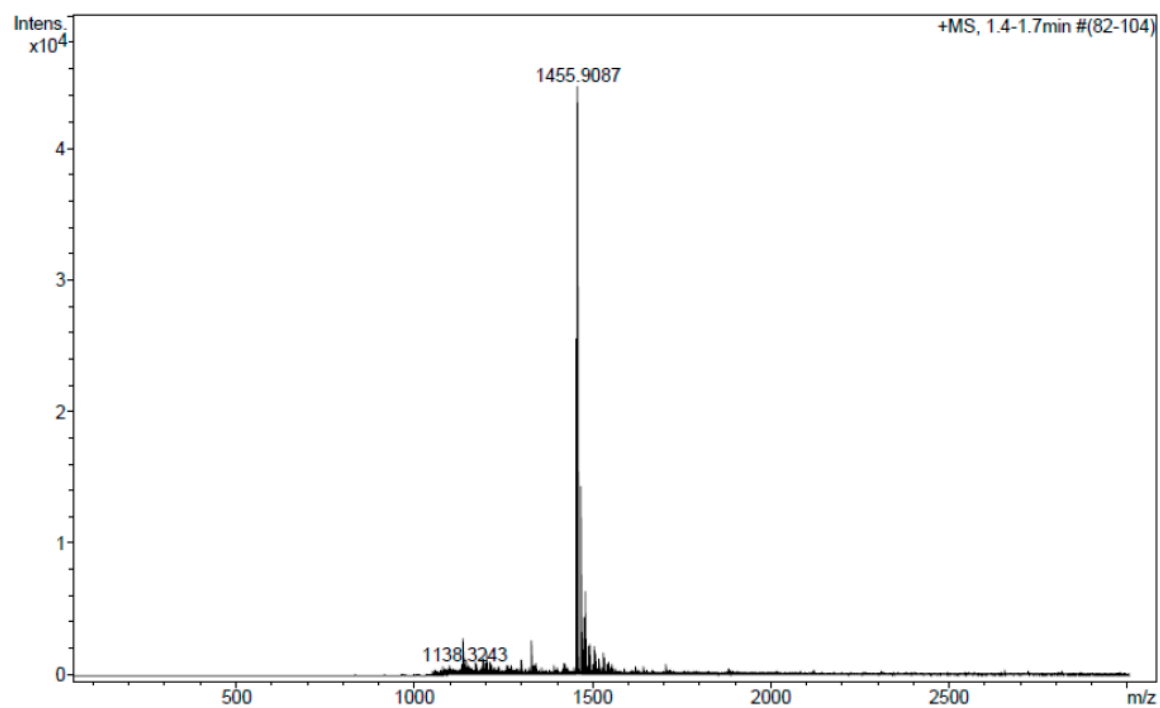


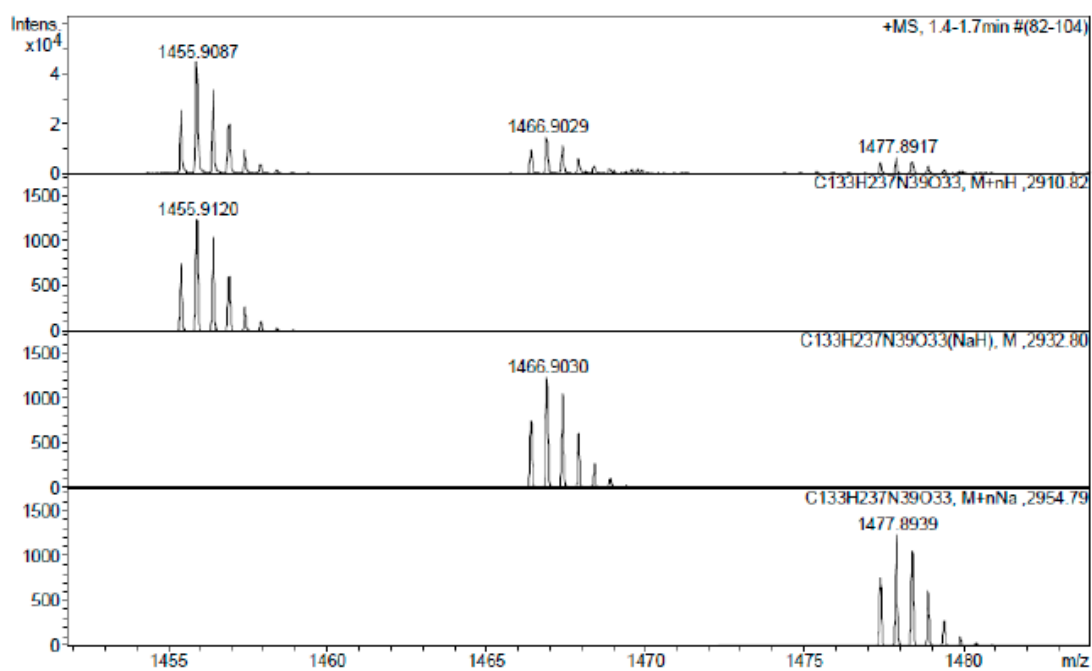
No.	Temps retenció min	alçada mAU	Area mAU*min	Area relativa %
1	6,94	1457,802	142,886	100,00
Total:		1457,802	142,886	100,00

ESI-MS (m/z)

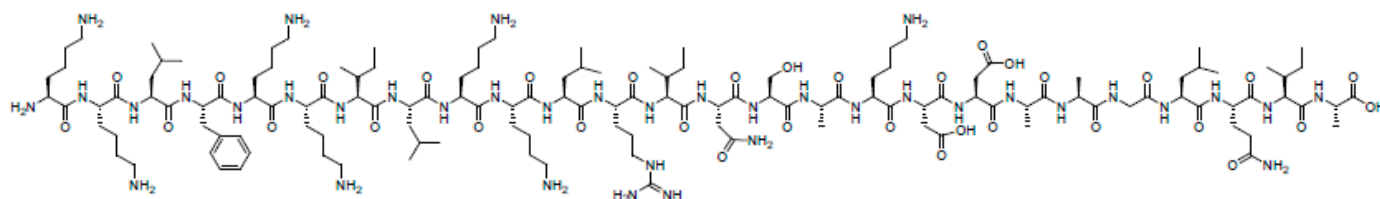


HRMS (m/z)

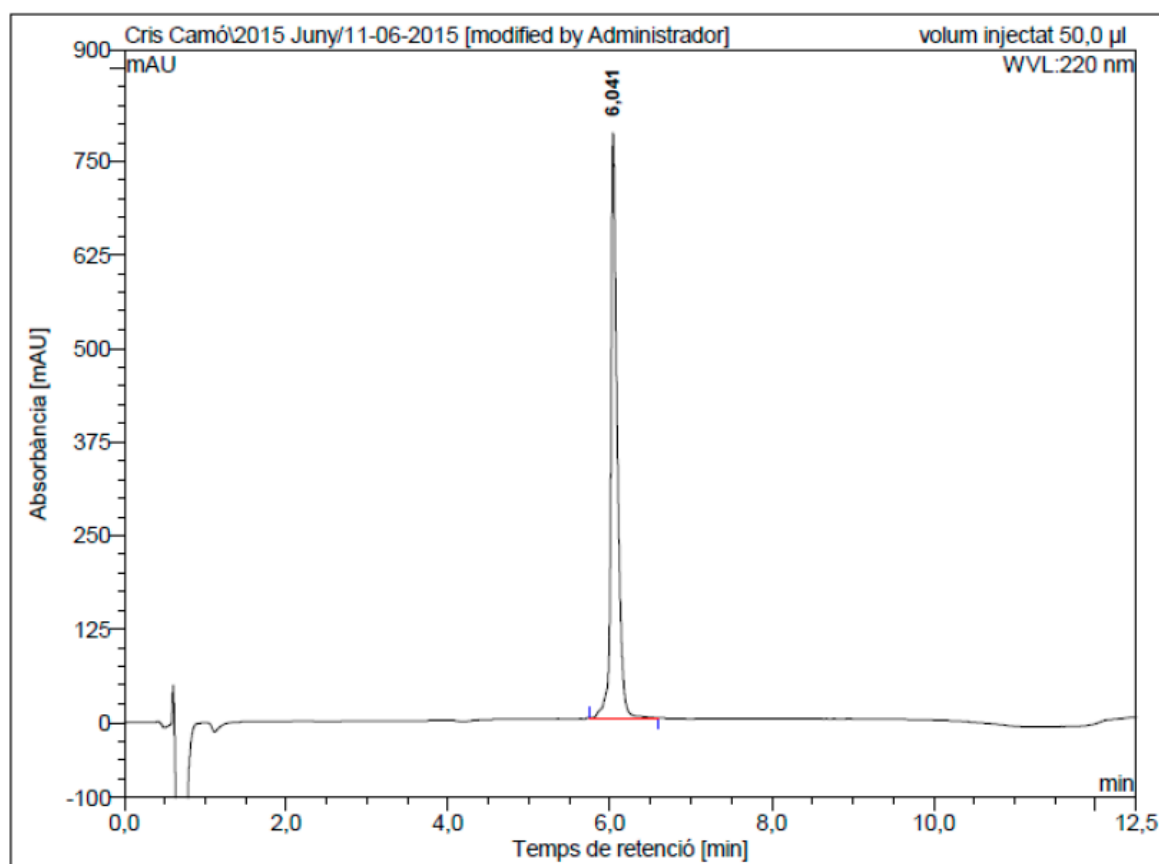




Lys-Lys-Leu-Phe-Lys-Lys-Ile-Leu-Lys-Lys-Leu-Arg-Ile-Asn-Ser-Ala-Lys-Asp-Asp-Ala-Ala-Gly-Leu-Gln-Ile-Ala-OH (BP359)

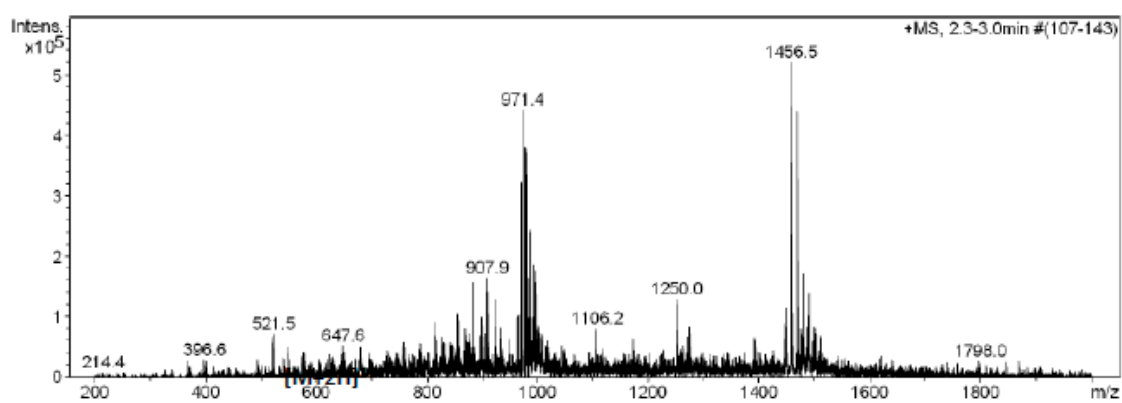


HPLC ($\lambda=220$ nm)



No.	Temps retenció min	alçada mAU	Area mAU*min	Area relativa %
1	6,04	782,370	71,301	100,00
Total:		782,370	71,301	100,00

ESI-MS (m/z)



HRMS (m/z)

