

Identification of 1-butyl-d-lysergic acid diethylamide (1B-LSD) in seized blotted paper using an integrated workflow of analytical techniques and chemoinformatics

Emmanouil D. Tsochatzis¹, Joao A. Lopes^{1, *}, Fabiano Reniero¹, Margaret V. Holland¹, Jenny Åberg² and Claude Guillou¹

Supplementary material

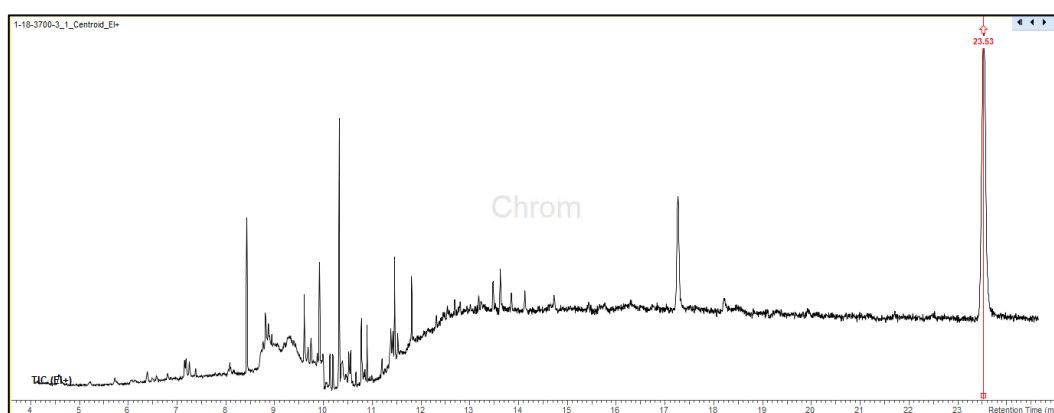


Figure S1 - GC chromatogram analysis (Full scan mode) of the the blotter paper methanol extract

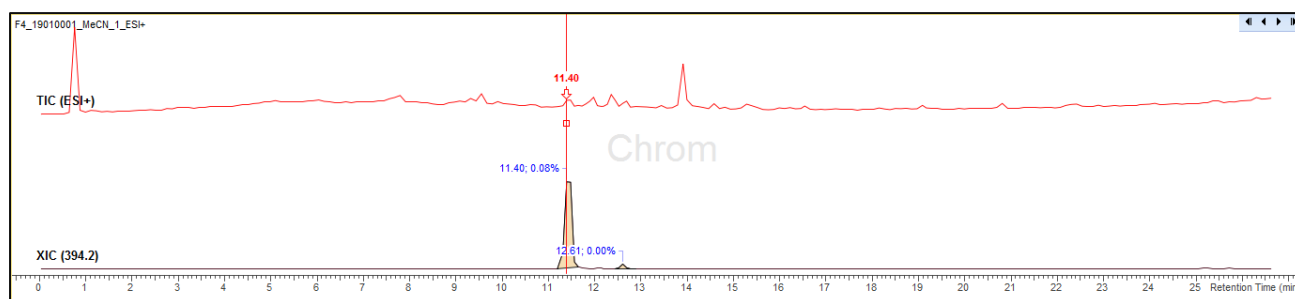


Figure S2 - UHPLC-qTOF-MS analysis of the blotter paper methanol extract (A) and the extracted ion chromatogram (XIC) of the 1B-LSD $[M+H]^+$

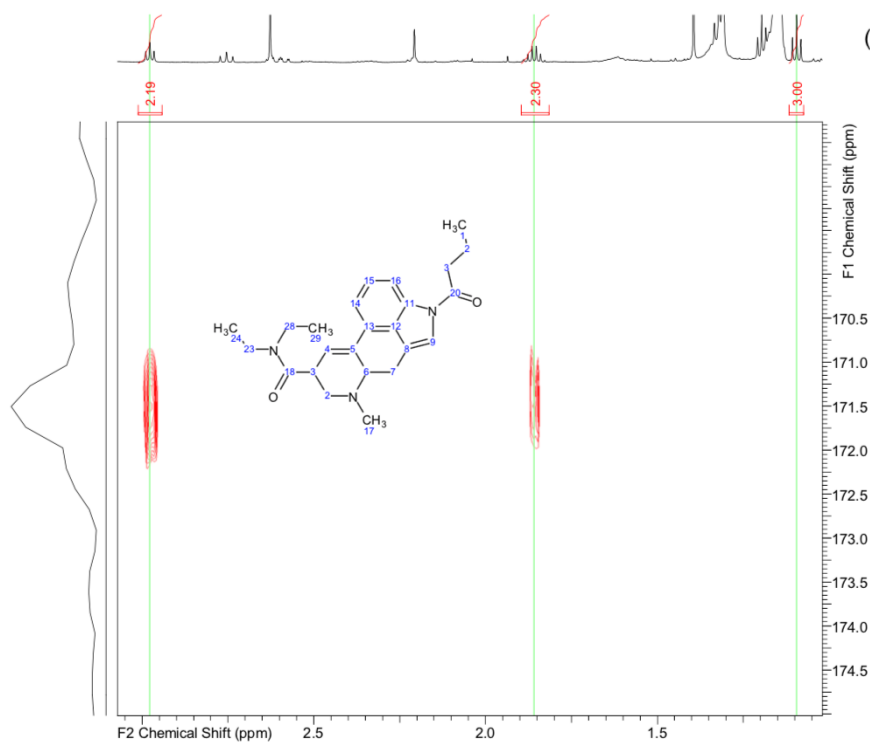


Figure S3 - HMBC NMR spectra of the blotter paper methanol extract

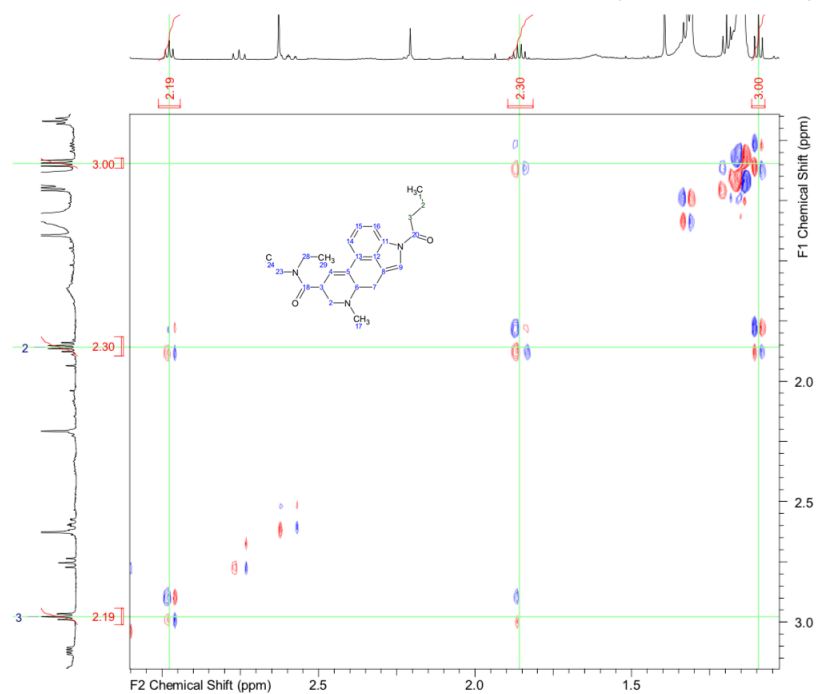


Figure S4- 2D COSY NMR spectra of the blotter paper methanol extract