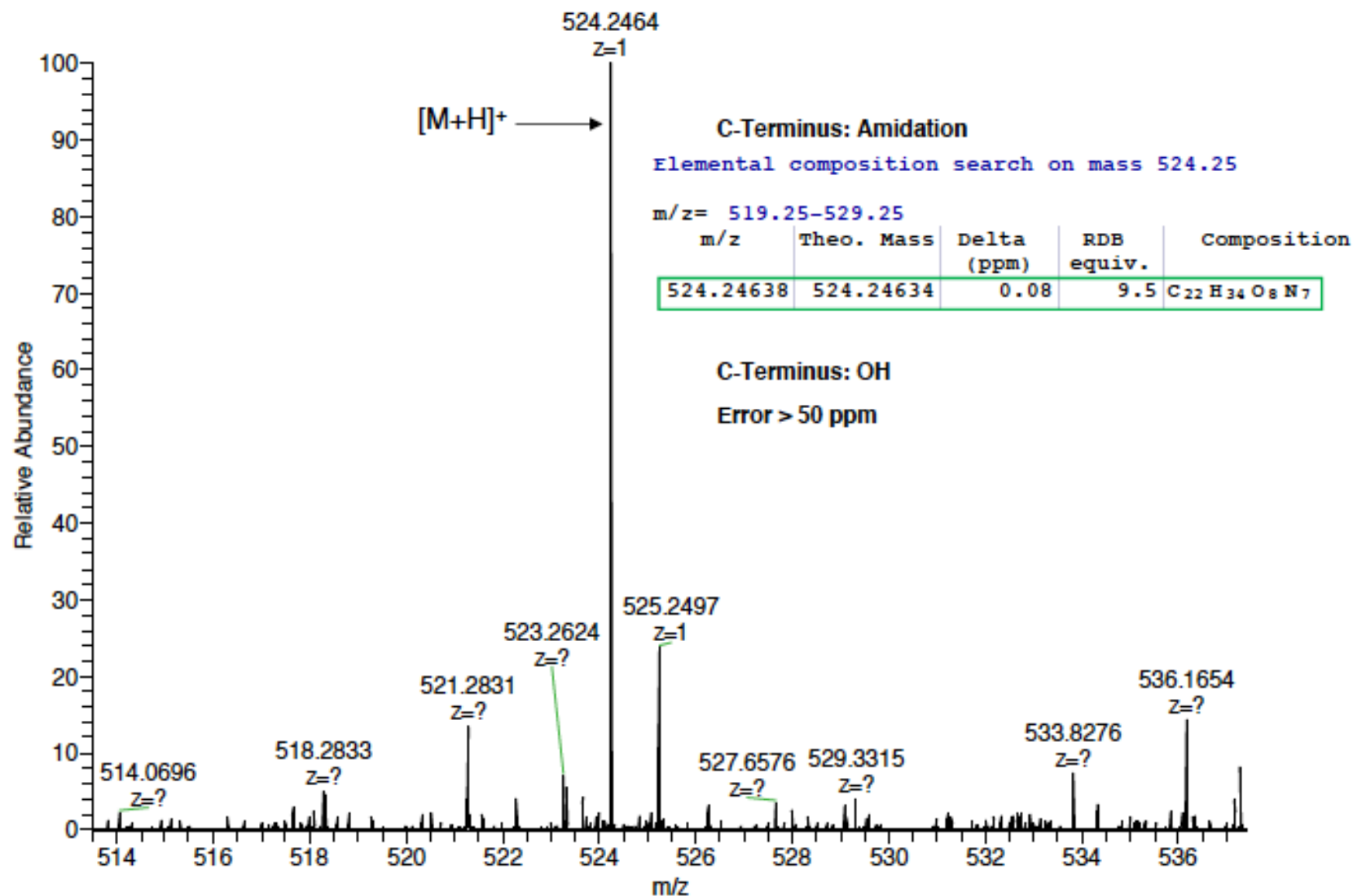


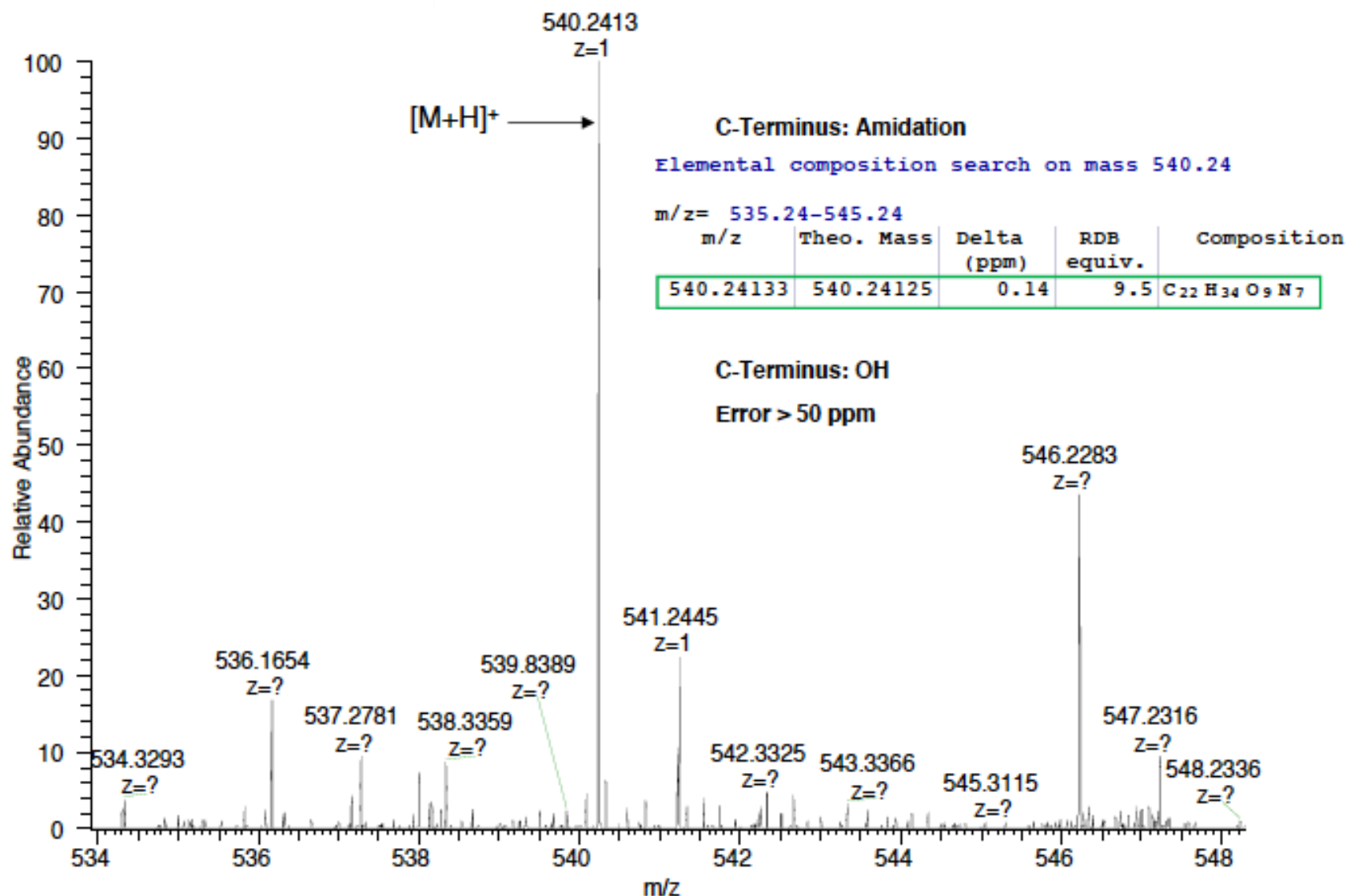
Zoom mass spectrum  
m/z 514-536

AV: 1 NL: 5.43E4



Zoom mass spectrum  
m/z 534-548

AV: 1 NL: 4.68E4

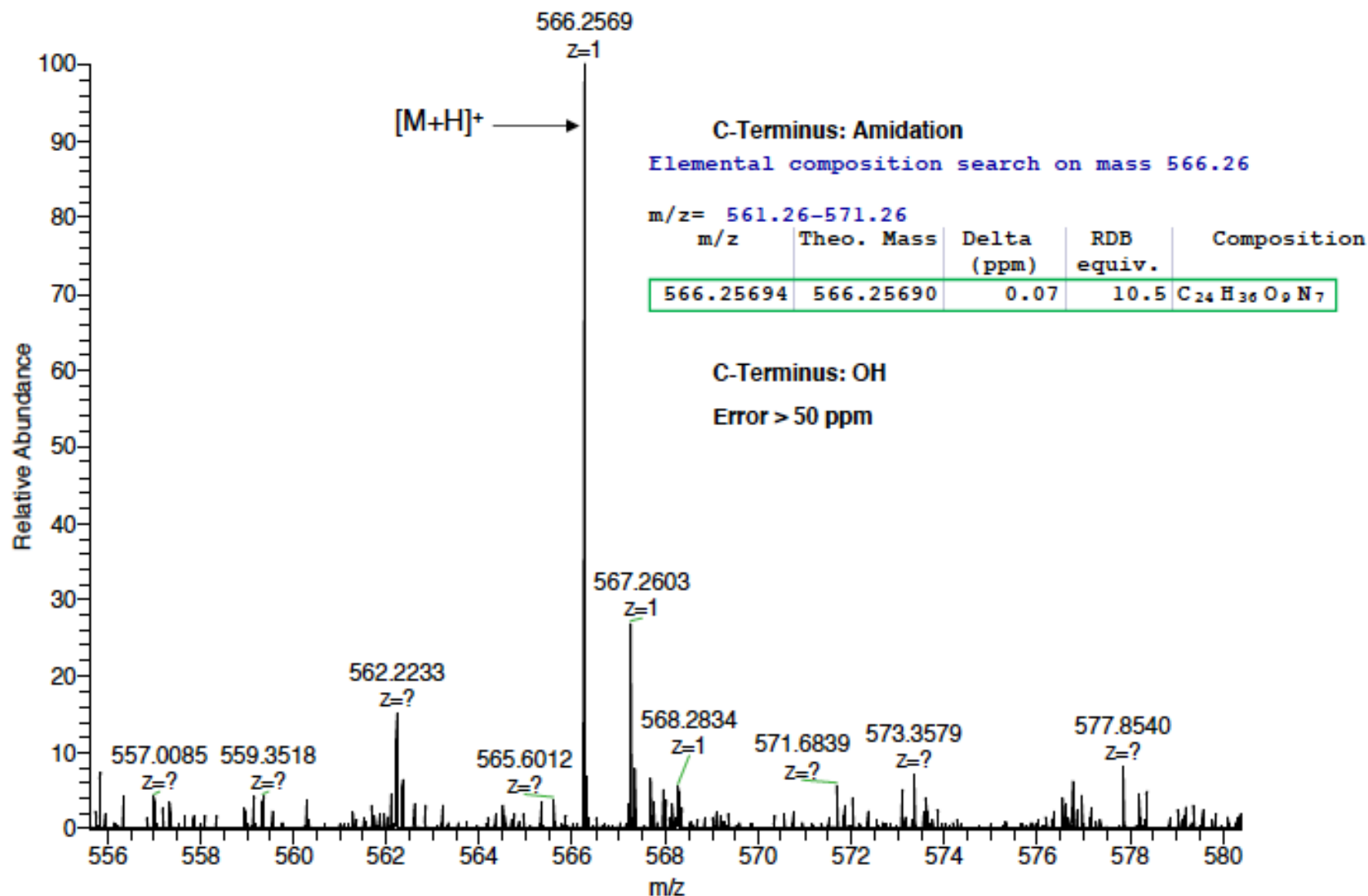


GeGaay

# Zoom mass spectrum

m/z 556-580

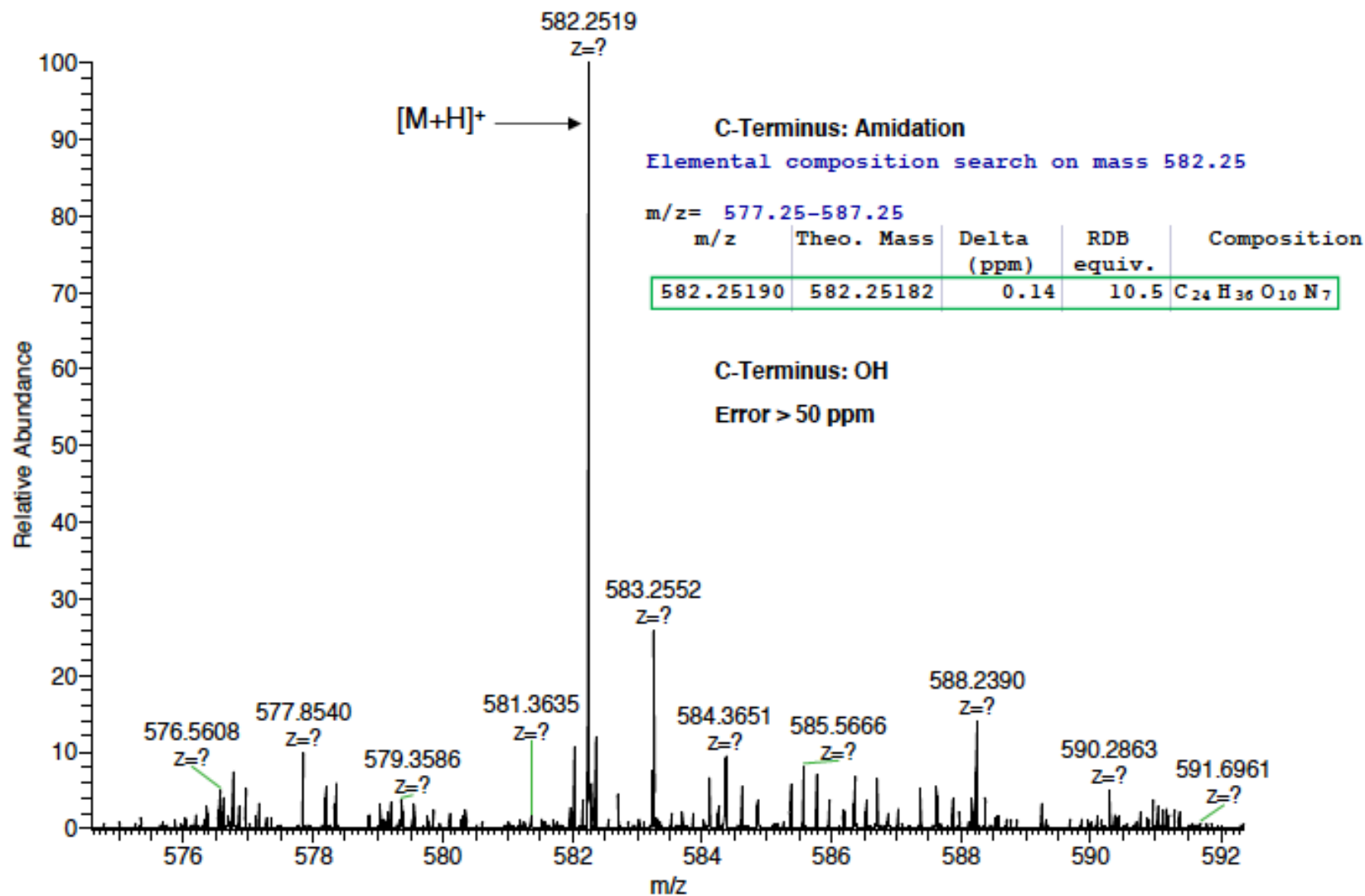
AV: 1 NL: 6.19E4



## Zoom mass spectrum

m/z 575-592

AV: 1 NL: 5.15E4

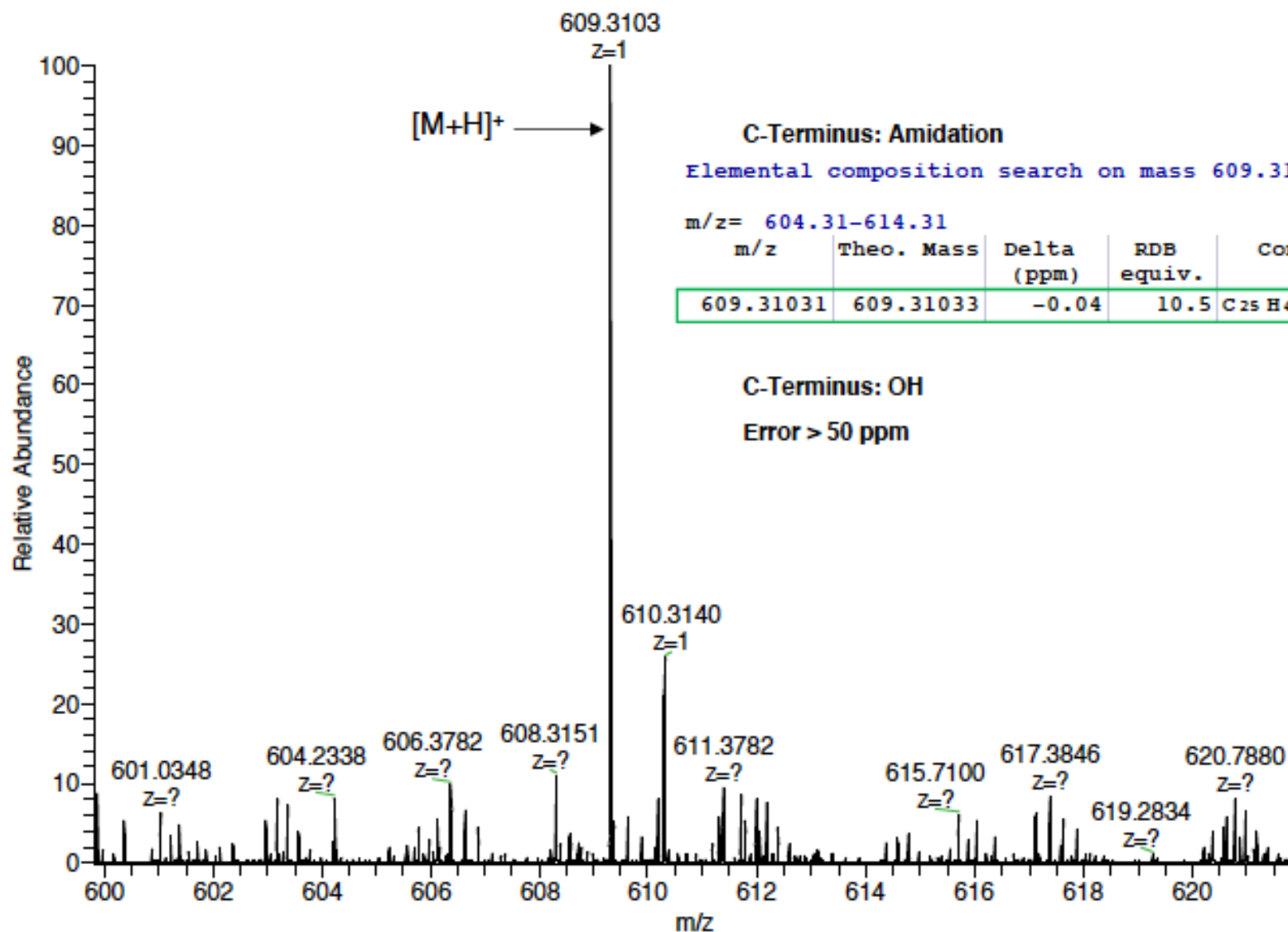


GsGray

# Zoom mass spectrum

m/z 600-621

AV: 1 NL: 6.31E4

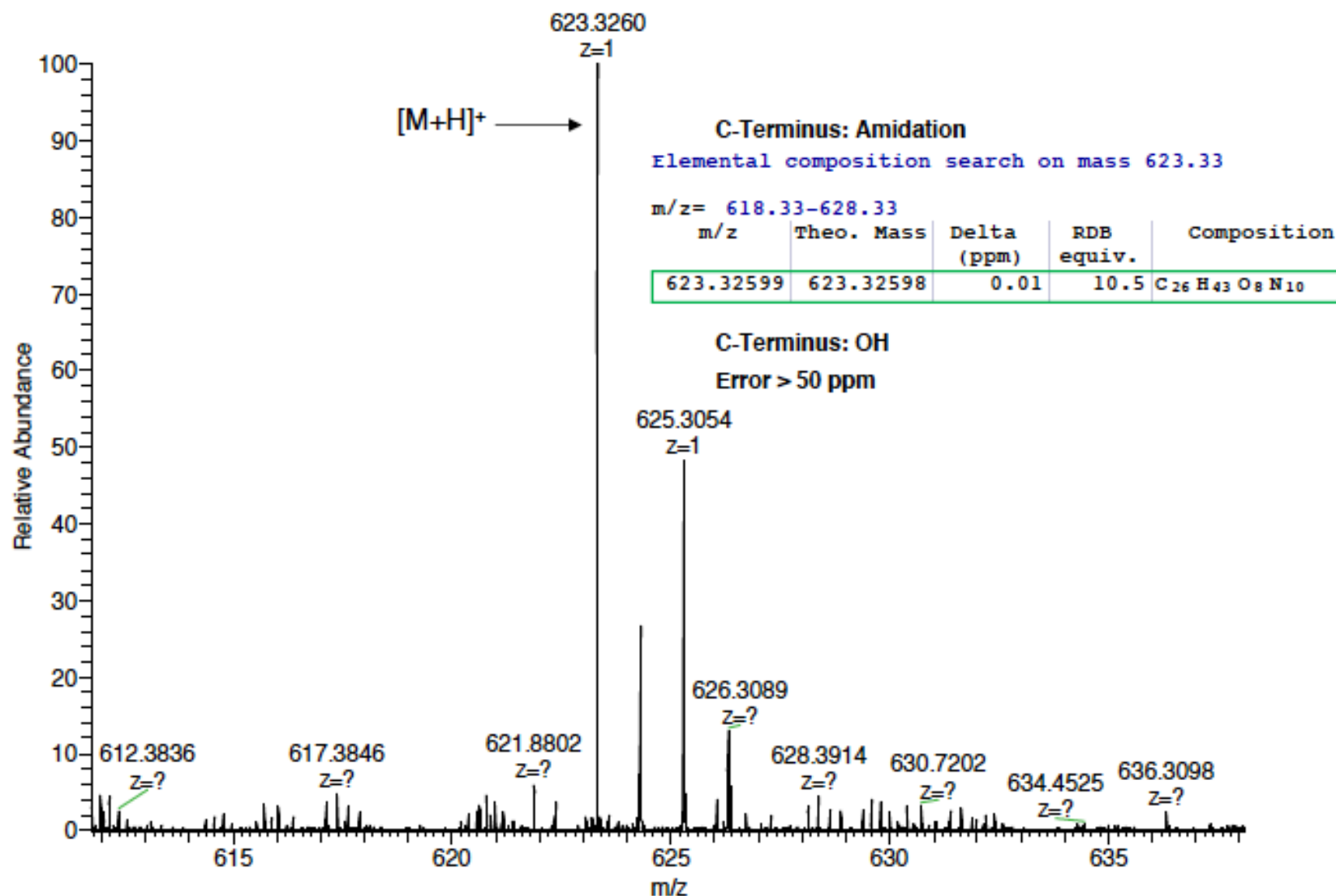


Gsraay

# Zoom mass spectrum

m/z 610-633

AV: 1 NL: 1.10E5

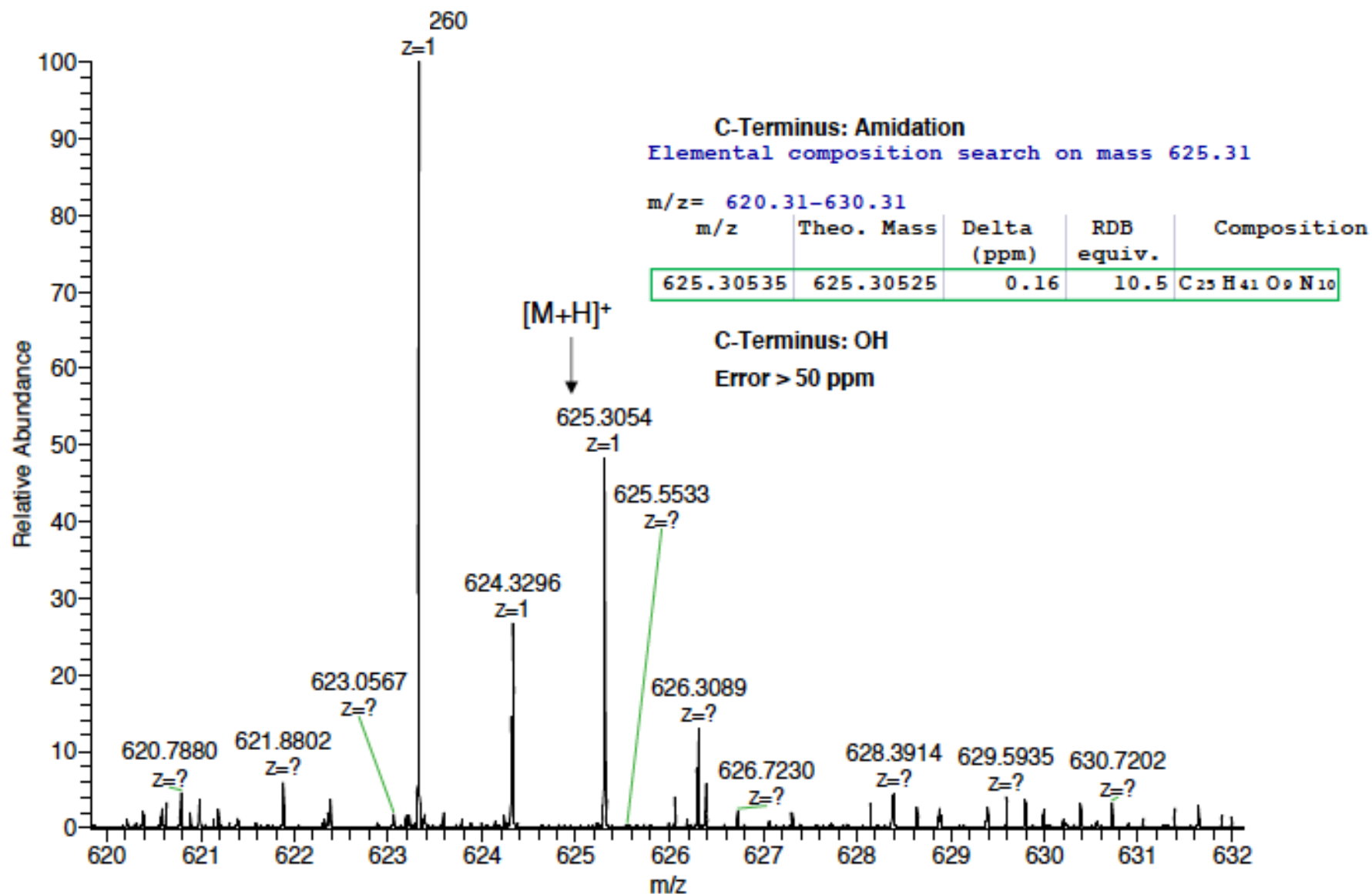


GsGrSy

## Zoom mass spectrum

m/z 610-633

AV: 1 NL: 1.10E5

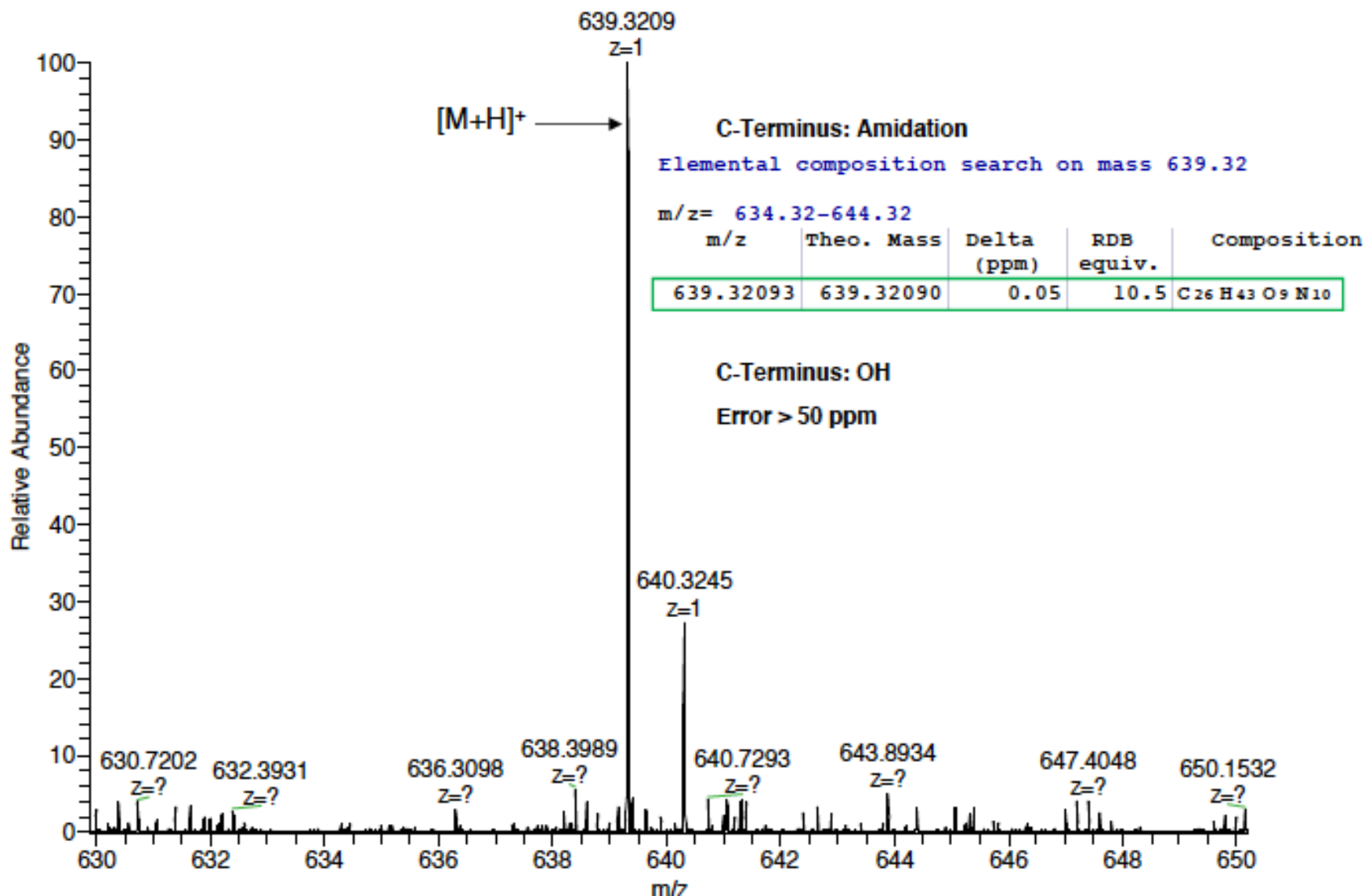


Gsrazy

# Zoom mass spectrum

m/z 630-650

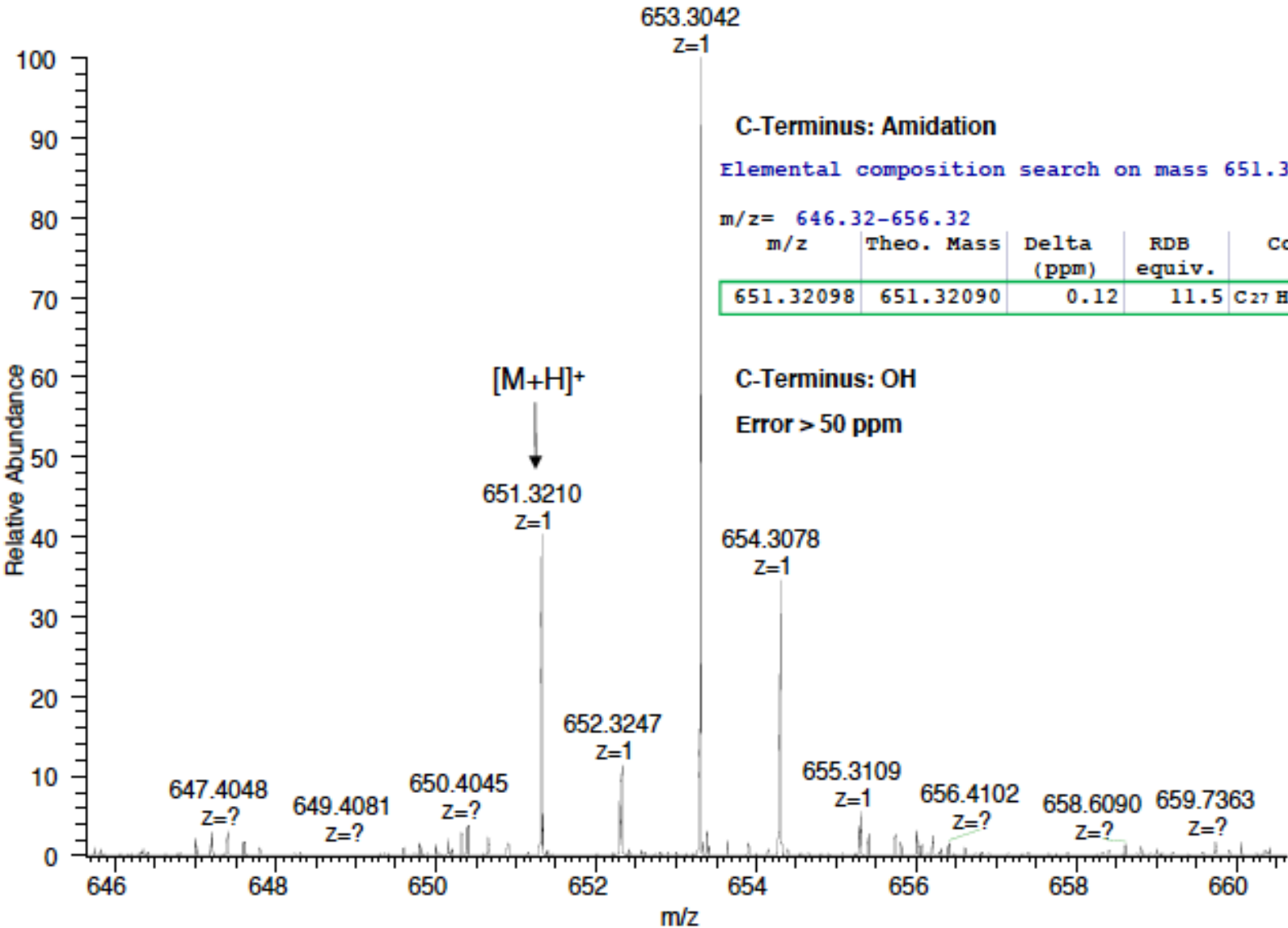
AV: 1 NL: 8.93E4





Zoom mass spectrum  
m/z 646-660

AV: 1 NL: 1.19E5



C-Terminus: Amidation

Elemental composition search on mass 651.32

m/z= 646.32-656.32

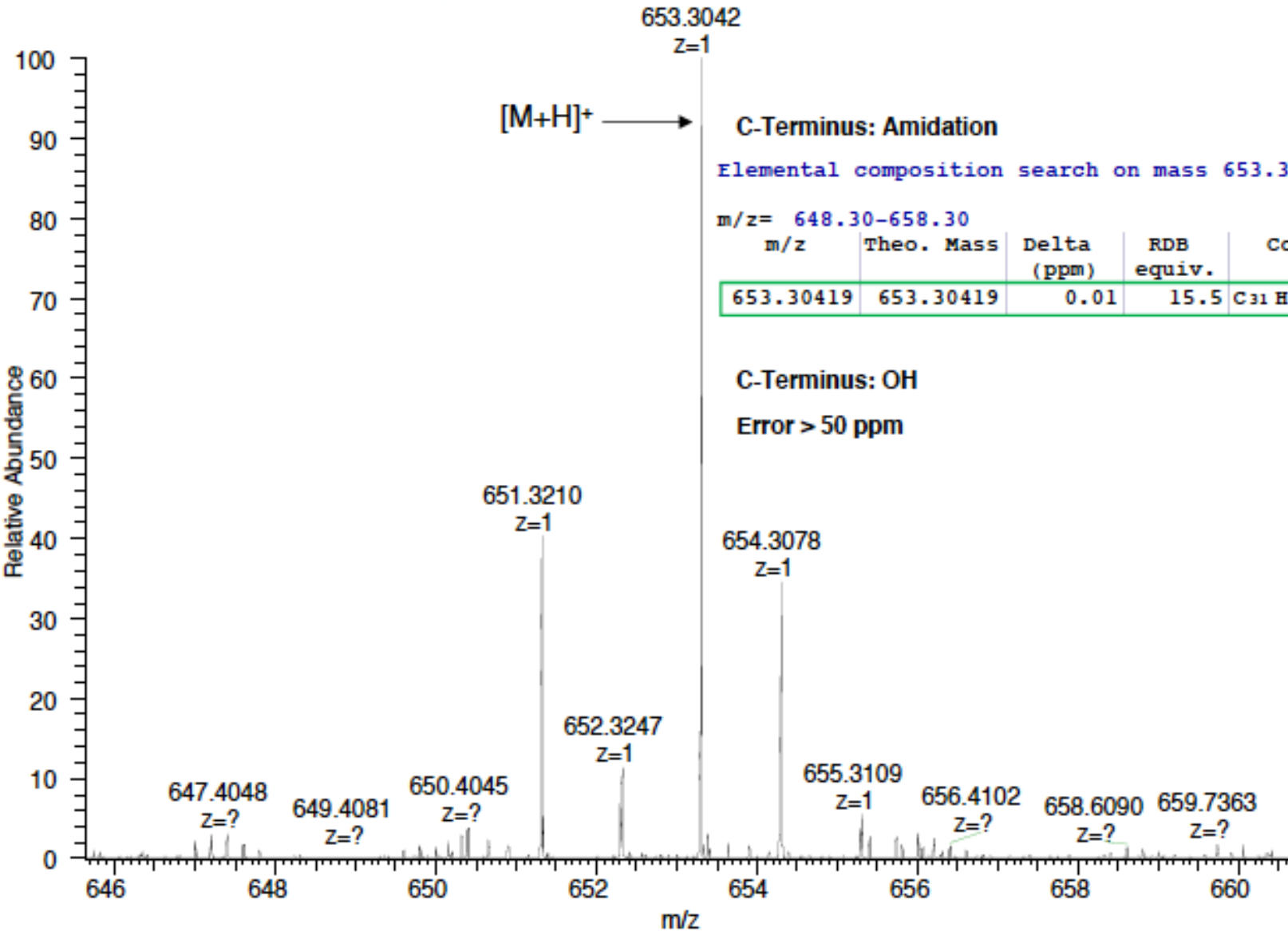
m/z	Theo. Mass	Delta (ppm)	RDB equiv.	Composition
651.32098	651.32090	0.12	11.5	C <sub>27</sub> H <sub>43</sub> O <sub>9</sub> N <sub>10</sub>

C-Terminus: OH

Error > 50 ppm

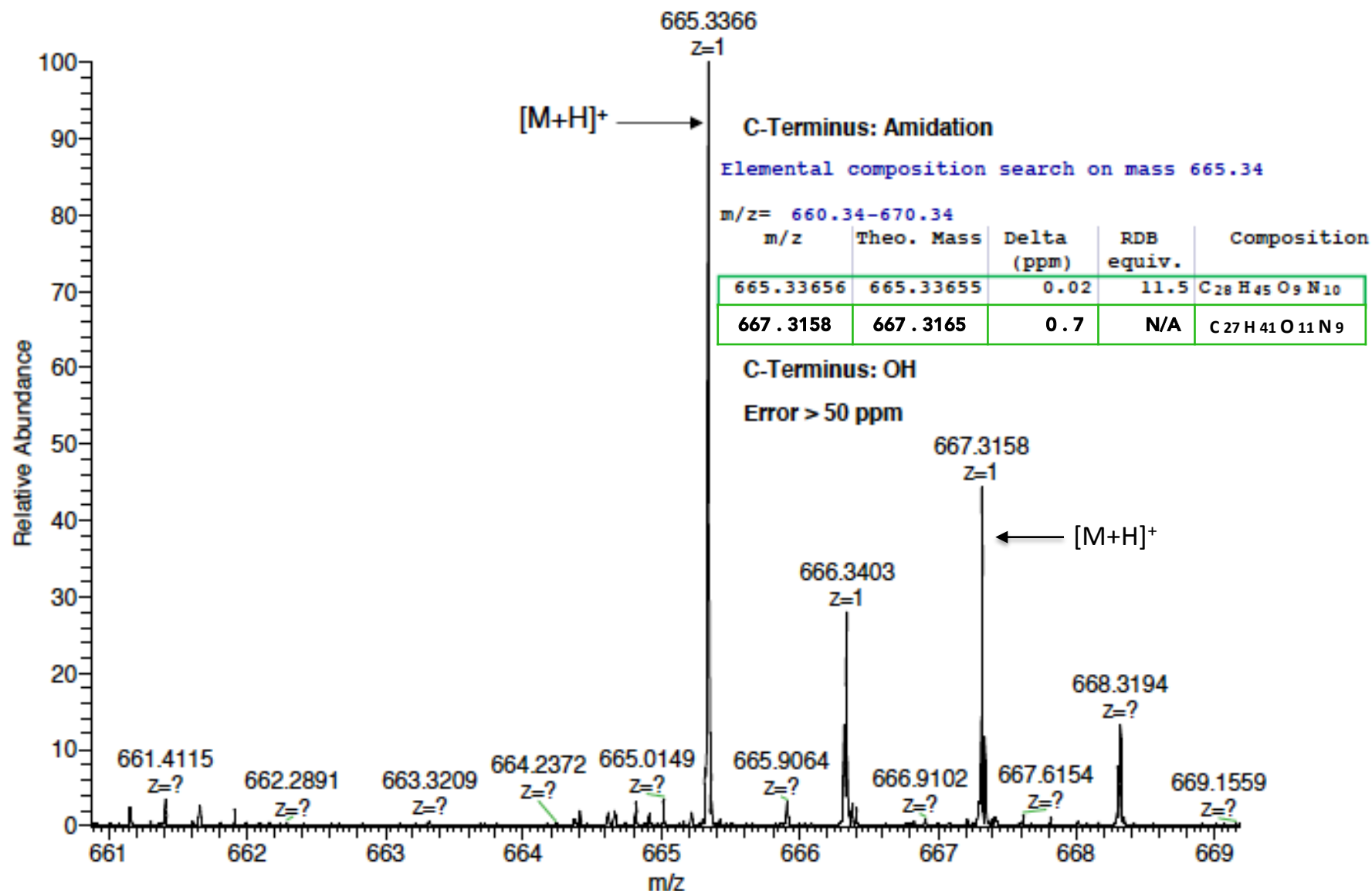
Zoom mass spectrum  
m/z 646-660

AV: 1 NL: 1.19E5



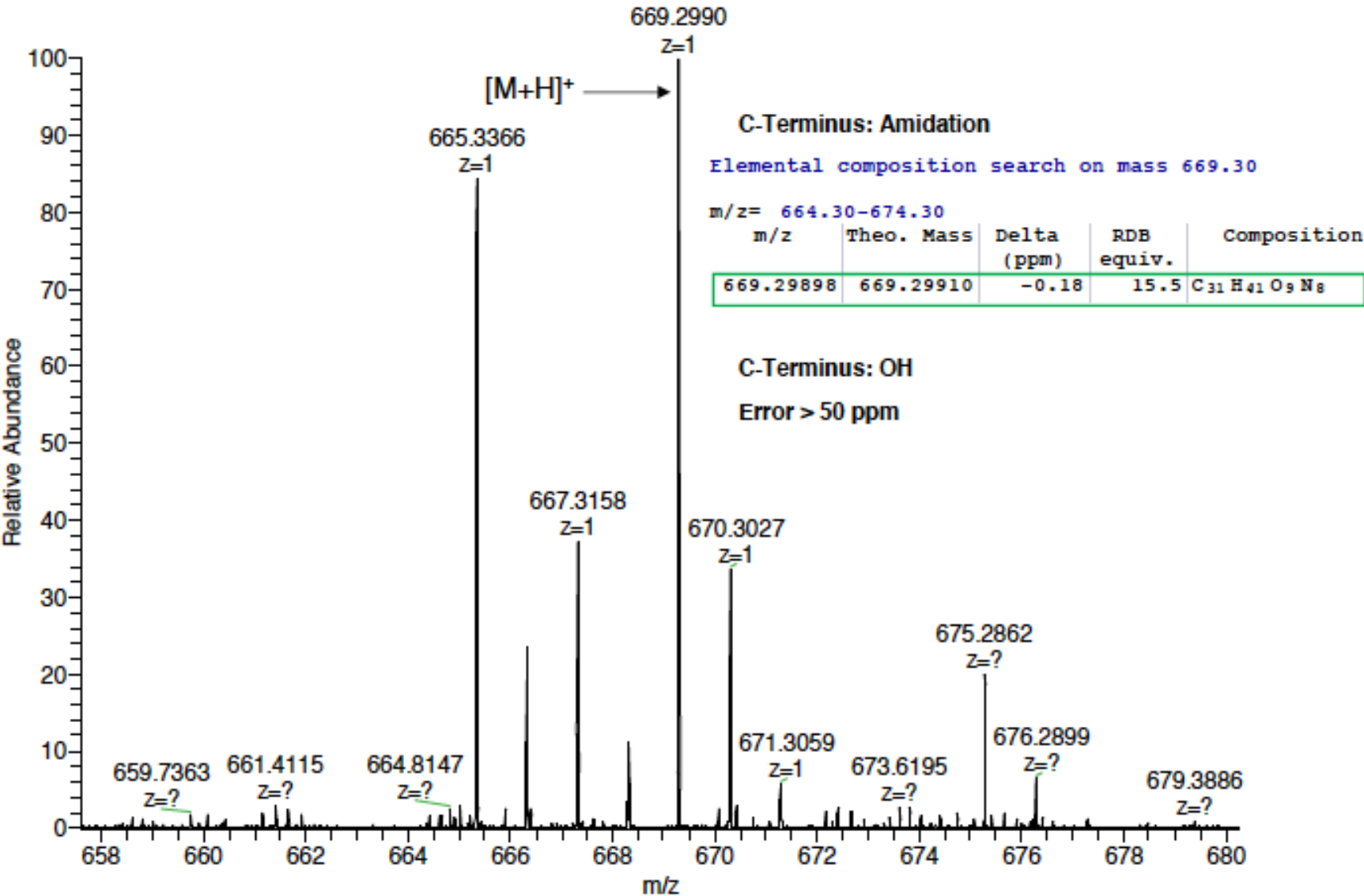
Geraay  
GeGrSy

Zoom mass spectrum  
m/z 646-660  
AV: 1 NL: 9.83E4



Zoom mass spectrum  
m/z 646-660

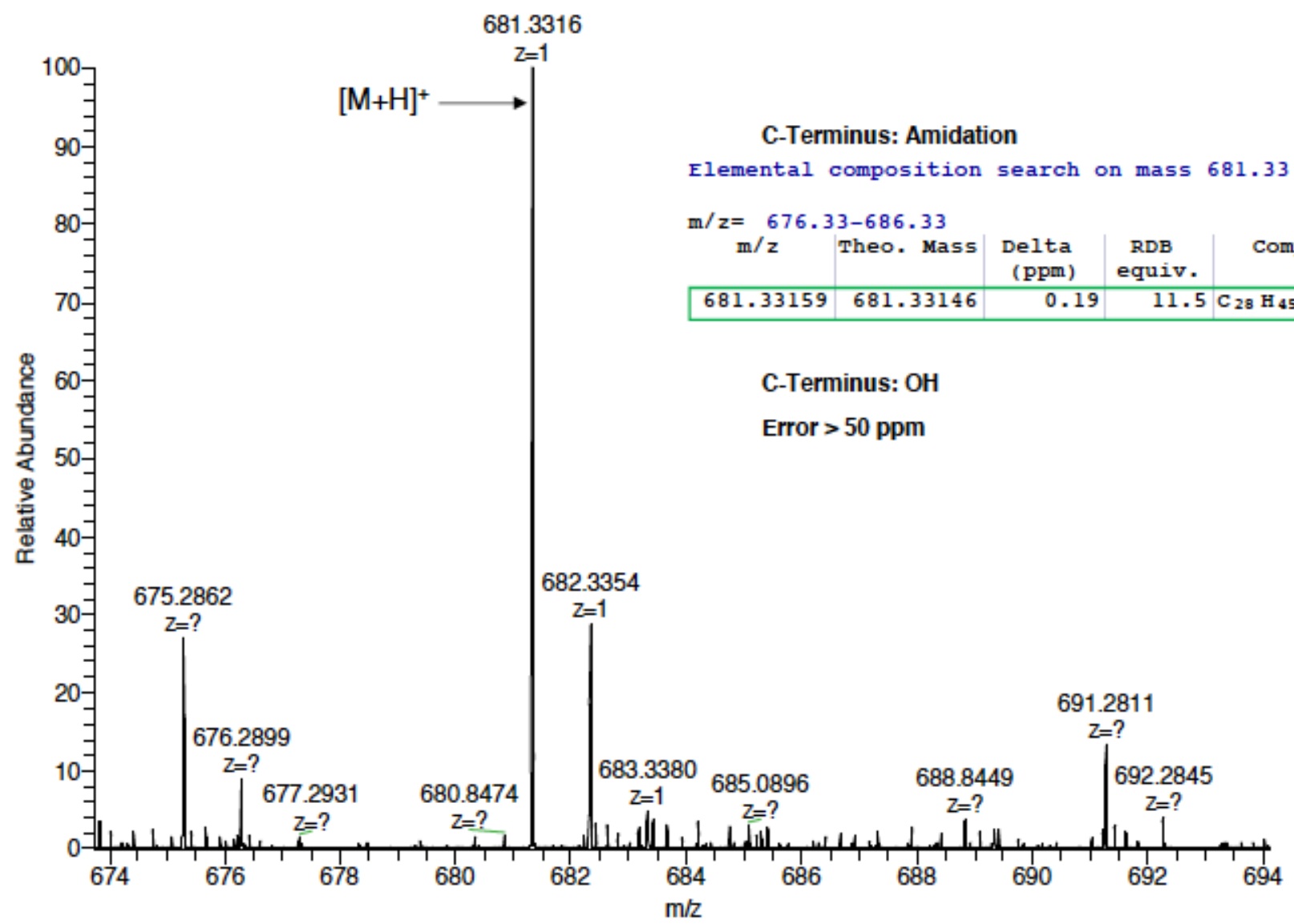
AV: 1 NL: 1.17E5



Gerasy

# Zoom mass spectrum m/z 646-660

AV: 1 NL: 8.54E4



C-Terminus: Amidation  
Elemental composition search on mass 681.33

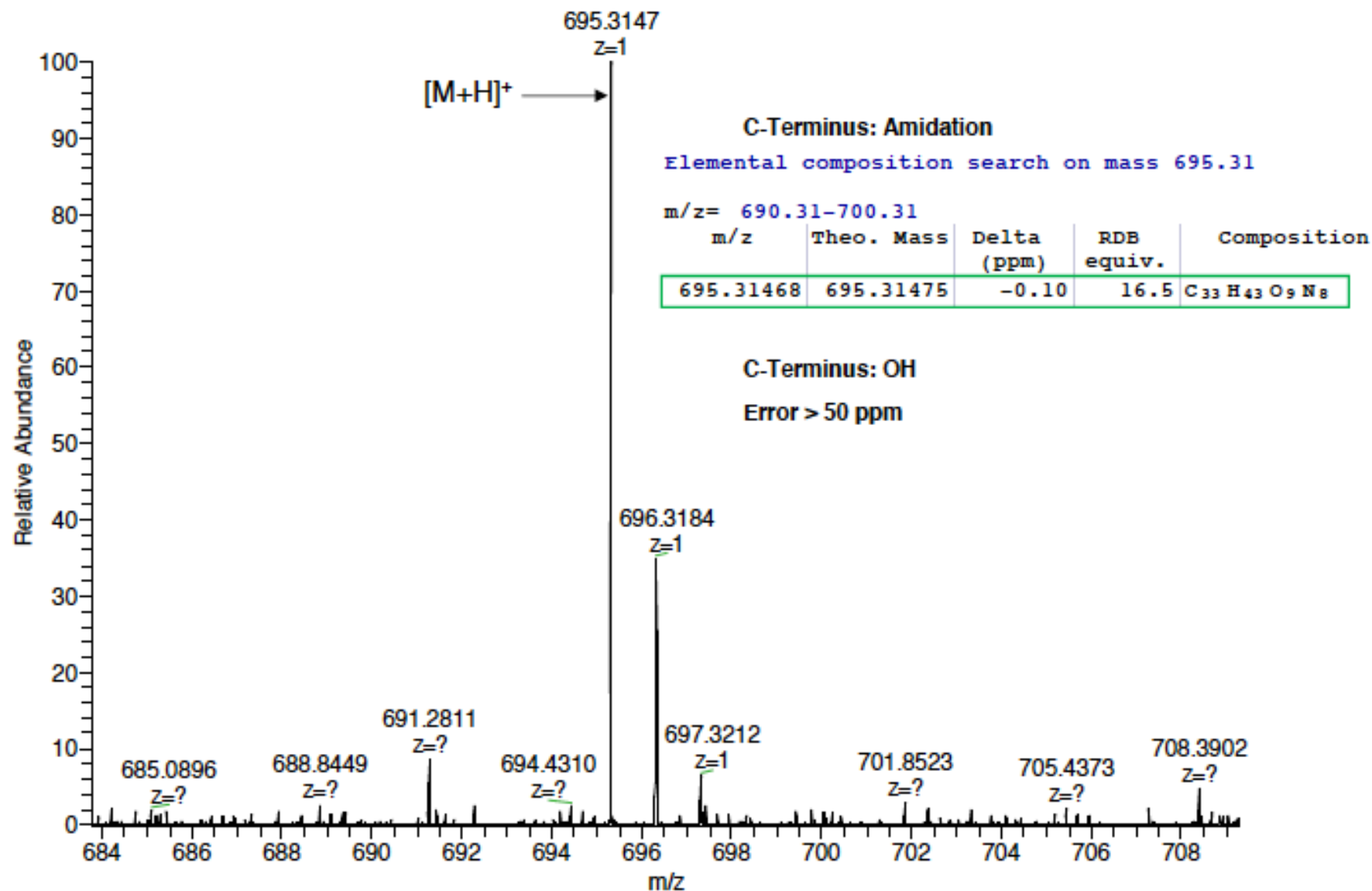
m/z= 676.33-686.33

m/z	Theo. Mass	Delta (ppm)	RDB equiv.	Composition
681.33159	681.33146	0.19	11.5	C <sub>28</sub> H <sub>45</sub> O <sub>10</sub> N <sub>10</sub>

C-Terminus: OH  
Error > 50 ppm

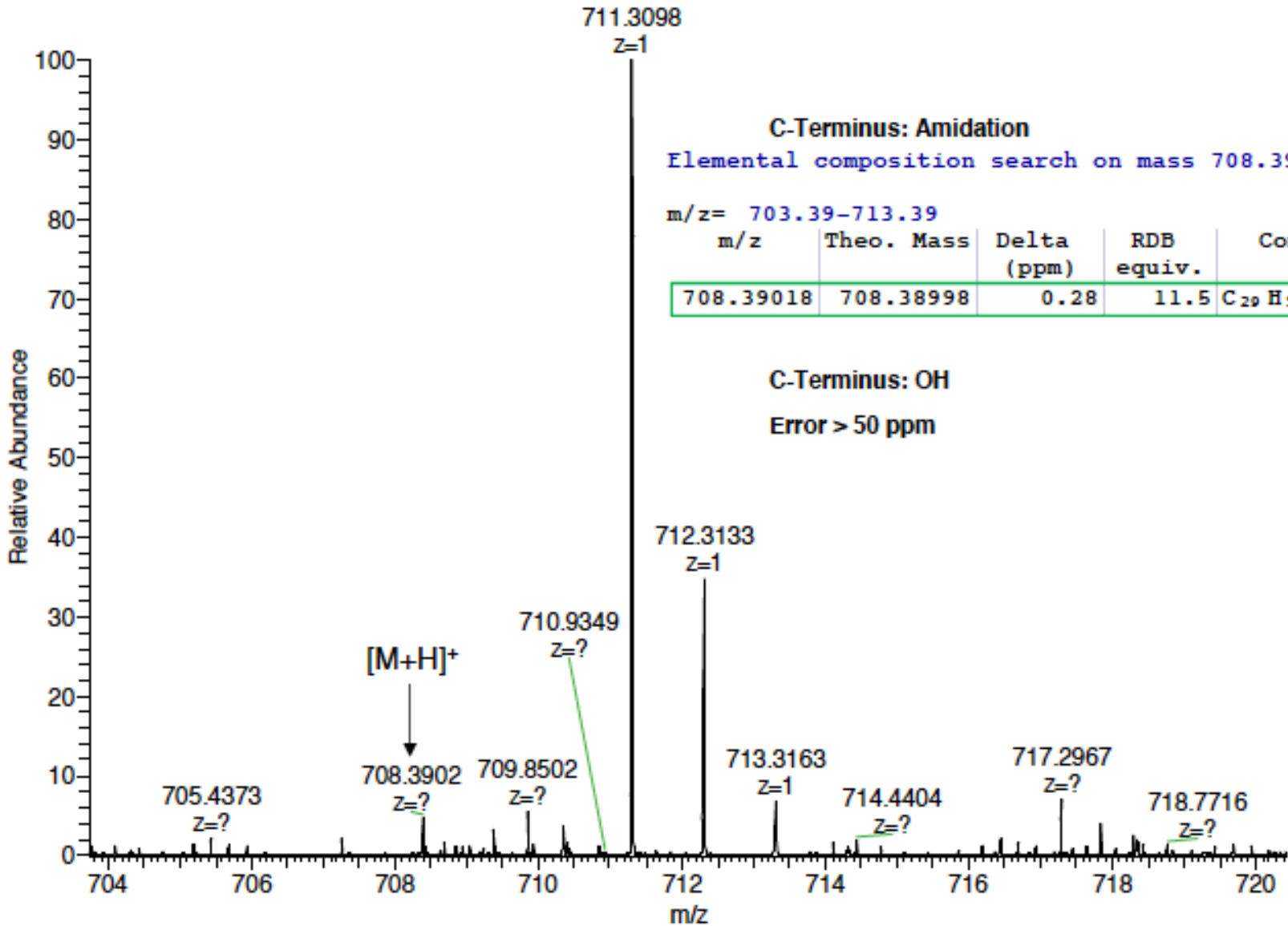
Zoom mass spectrum  
m/z 684-708

AV: 1 NL: 1.34E5



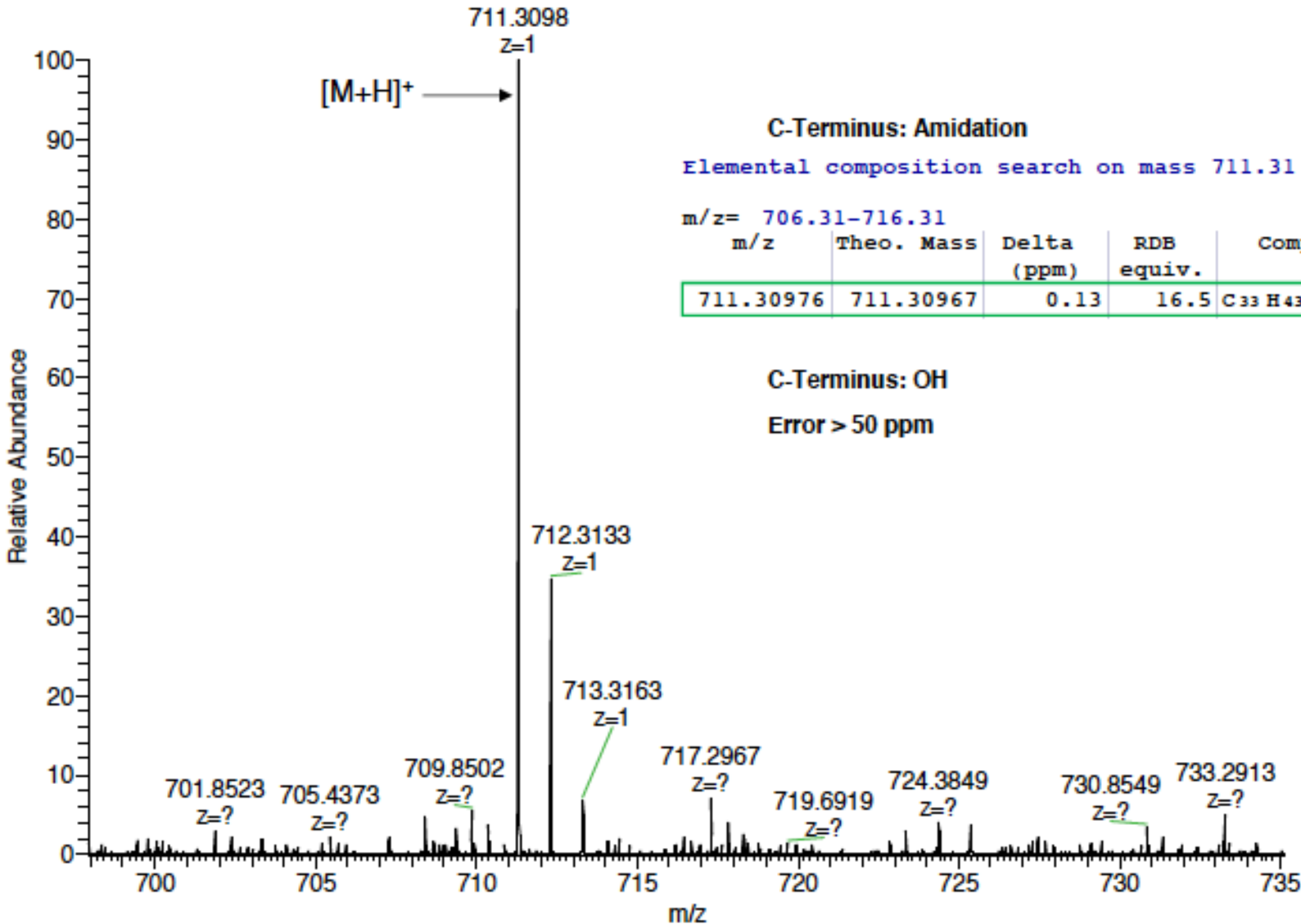
Zoom mass spectrum  
m/z 684-708

AV: 1 NL: 1.34E5



Zoom mass spectrum  
m/z 698-735

AV: 1 NL: 1.34E5



C-Terminus: Amidation

Elemental composition search on mass 711.31

m/z= 706.31-716.31

m/z	Theo. Mass	Delta (ppm)	RDB equiv.	Composition
711.30976	711.30967	0.13	16.5	C <sub>33</sub> H <sub>43</sub> O <sub>10</sub> N <sub>8</sub>

C-Terminus: OH

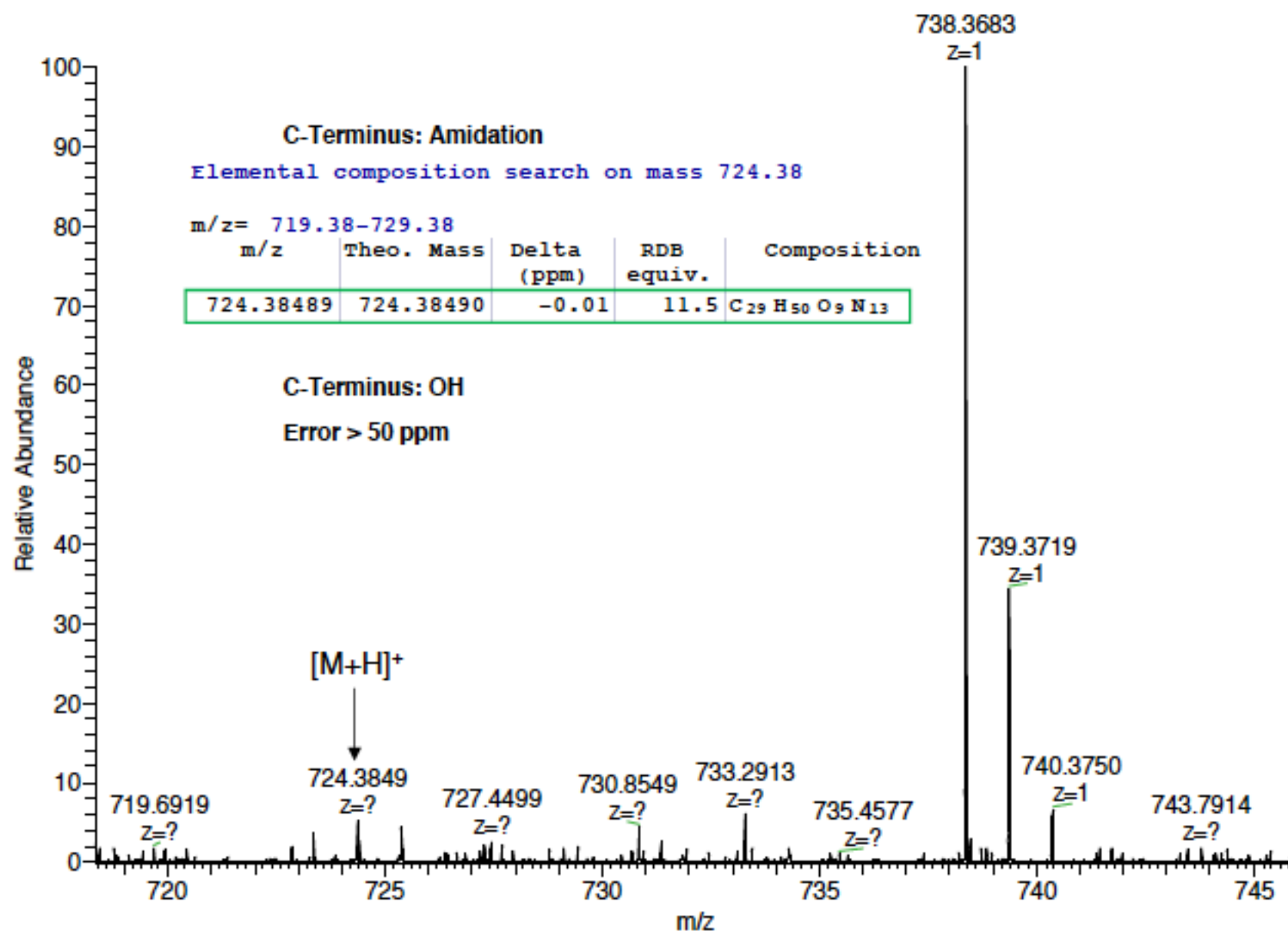
Error > 50 ppm



## Zoom mass spectrum

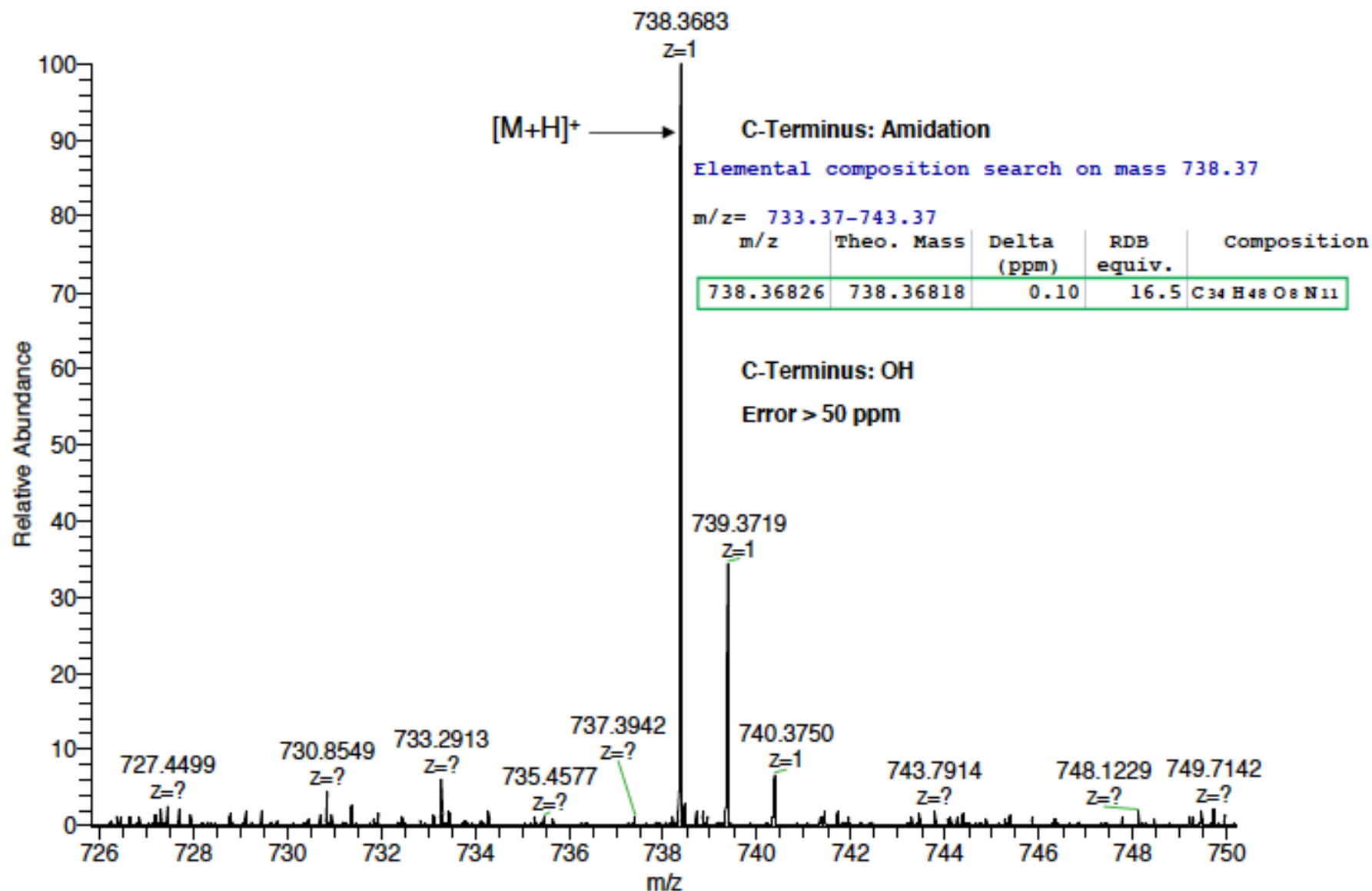
m/z 719-745

AV: 1 NL: 1.07E5



Zoom mass spectrum  
m/z 726-750

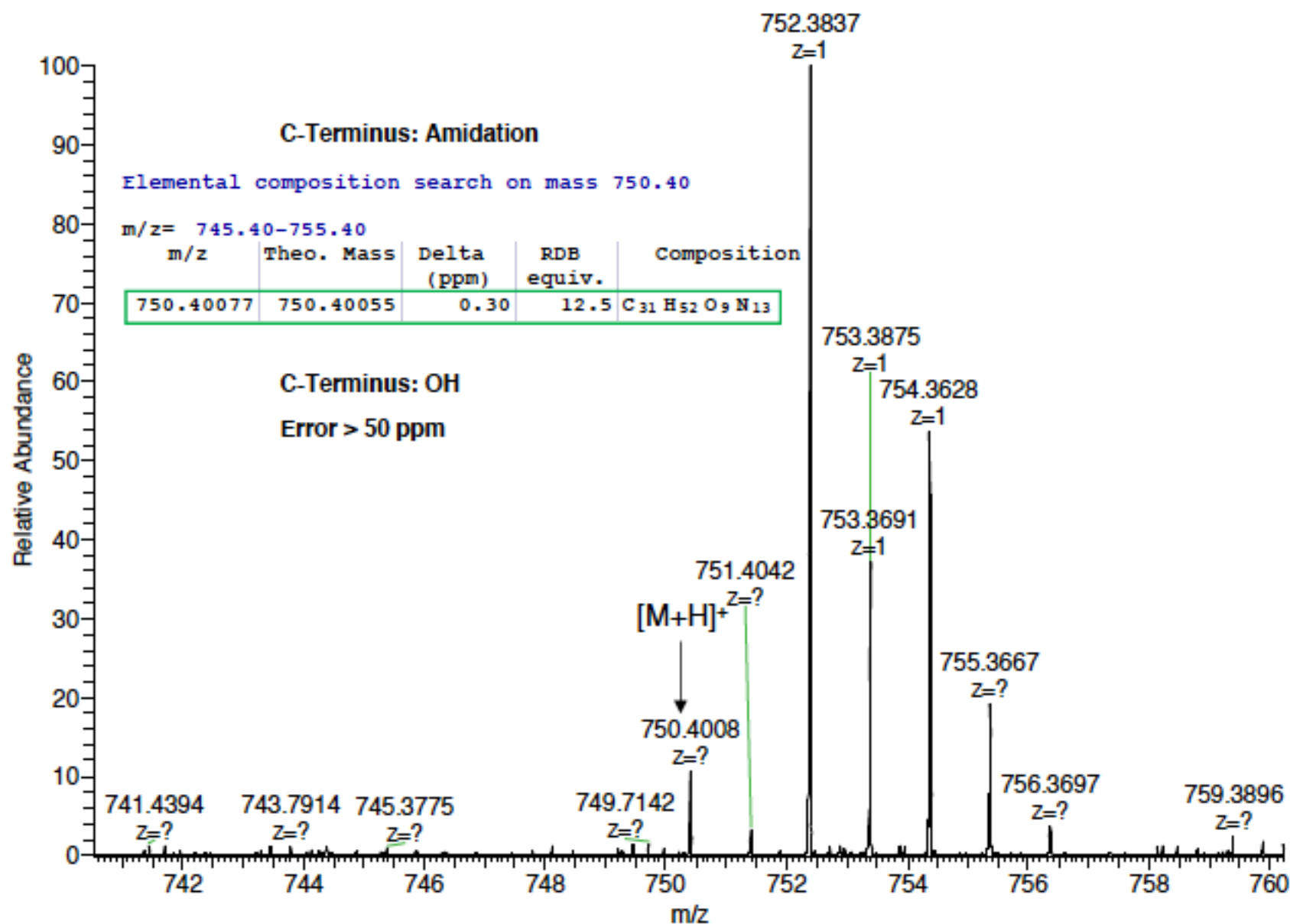
AV: 1 NL: 1.07E5



## Zoom mass spectrum

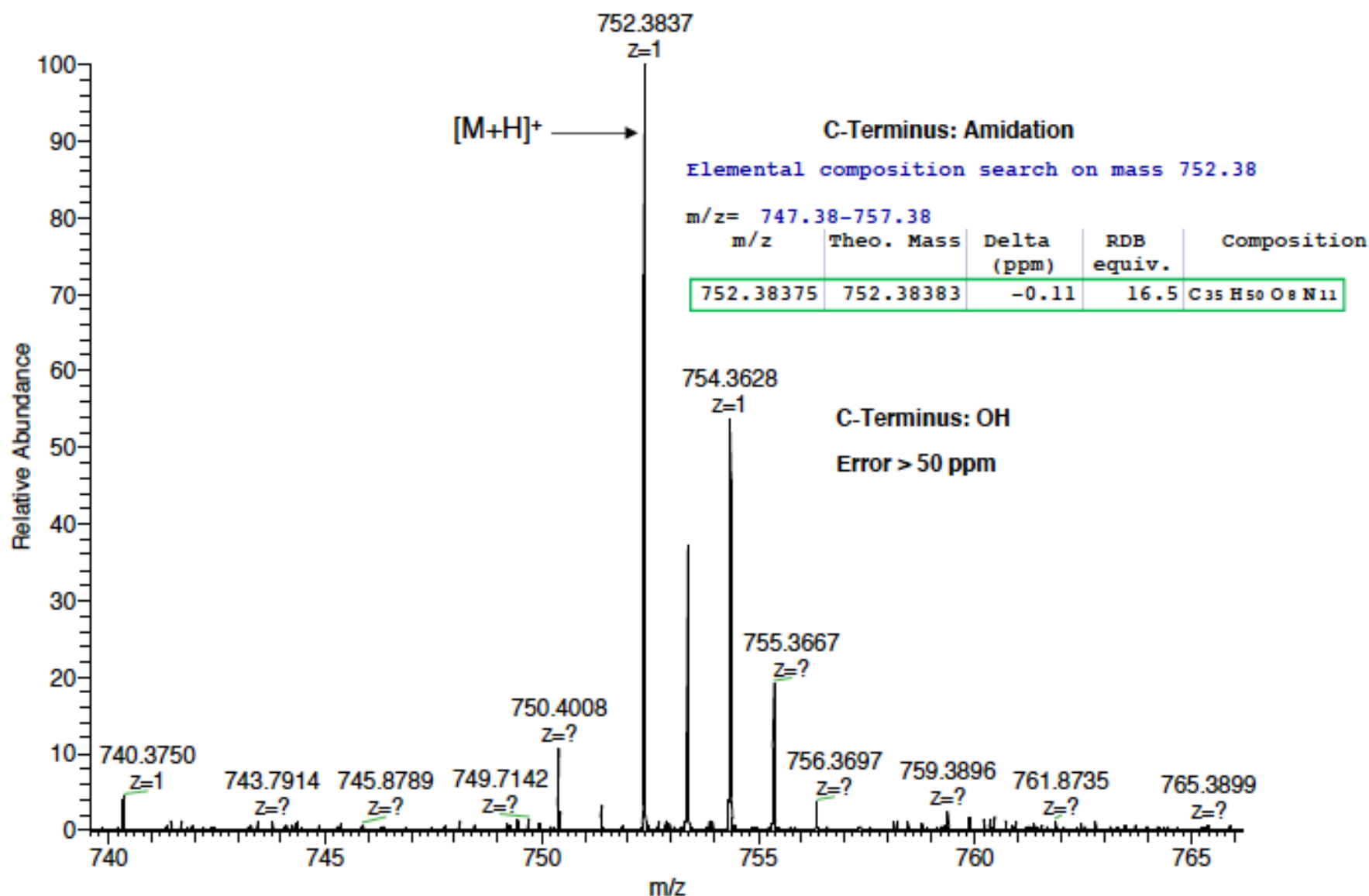
m/z 719-745

AV: 1 NL: 1.63E5



Zoom mass spectrum  
m/z 740-766

AV: 1 NL: 1.63E5

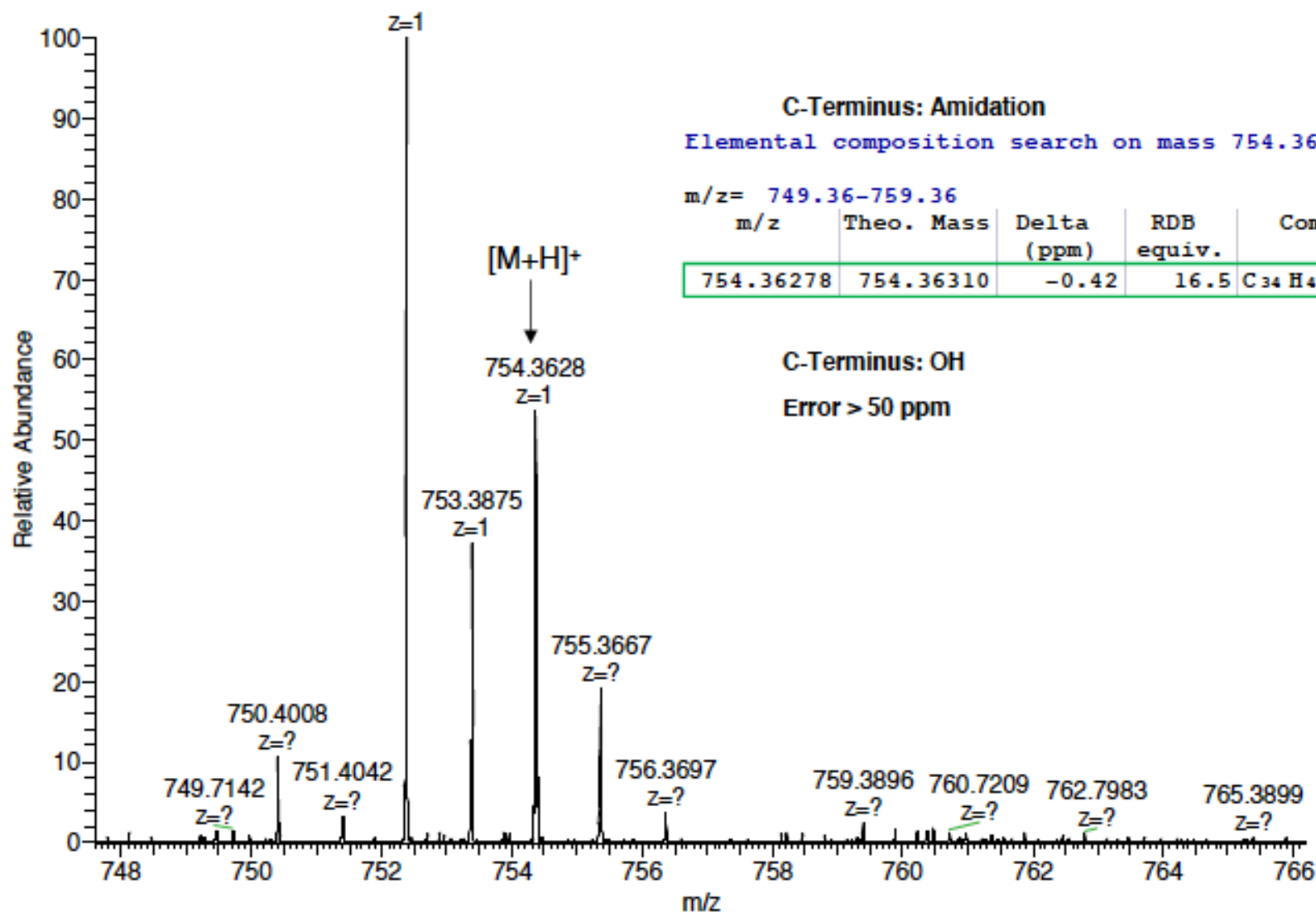


wsGrsy

# Zoom mass spectrum

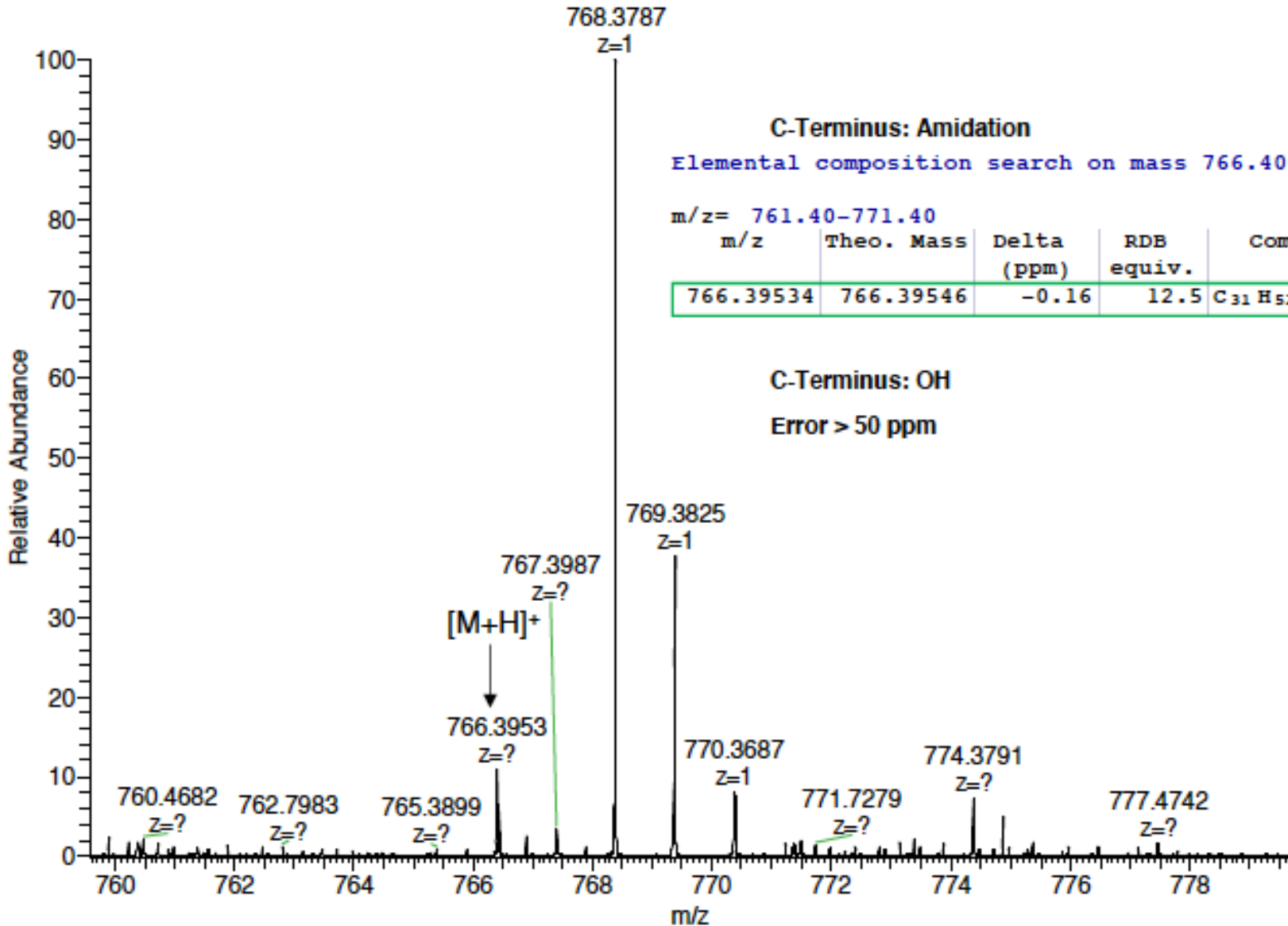
m/z 748-766

AV: 1 NL: 1.63E5



Zoom mass spectrum  
m/z 760-779

AV: 1 NL: 1.27E5



C-Terminus: Amidation  
Elemental composition search on mass 766.40

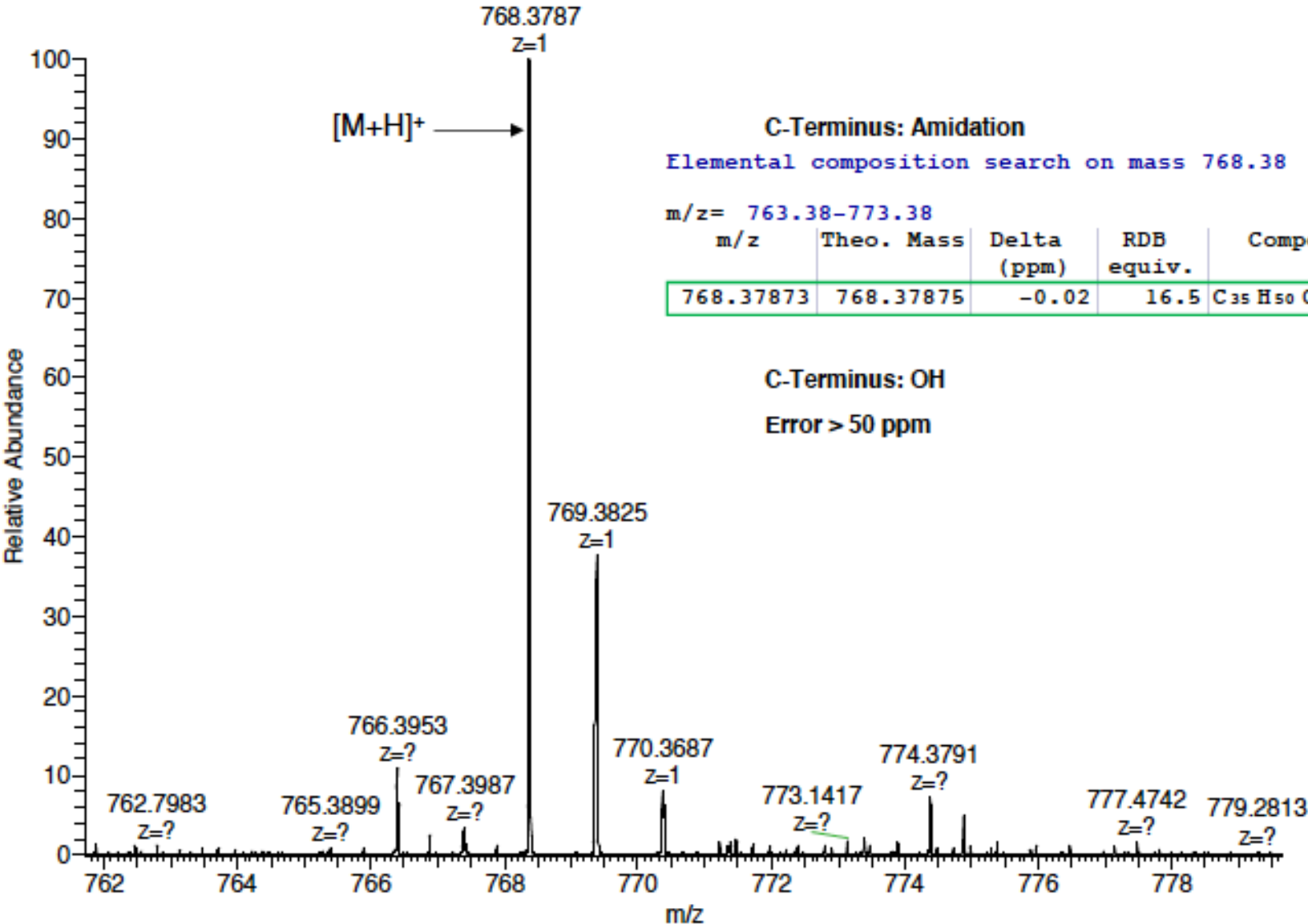
m/z= 761.40-771.40

m/z	Theo. Mass	Delta (ppm)	RDB equiv.	Composition
766.39534	766.39546	-0.16	12.5	C <sub>31</sub> H <sub>52</sub> O <sub>10</sub> N <sub>13</sub>

C-Terminus: OH  
Error > 50 ppm

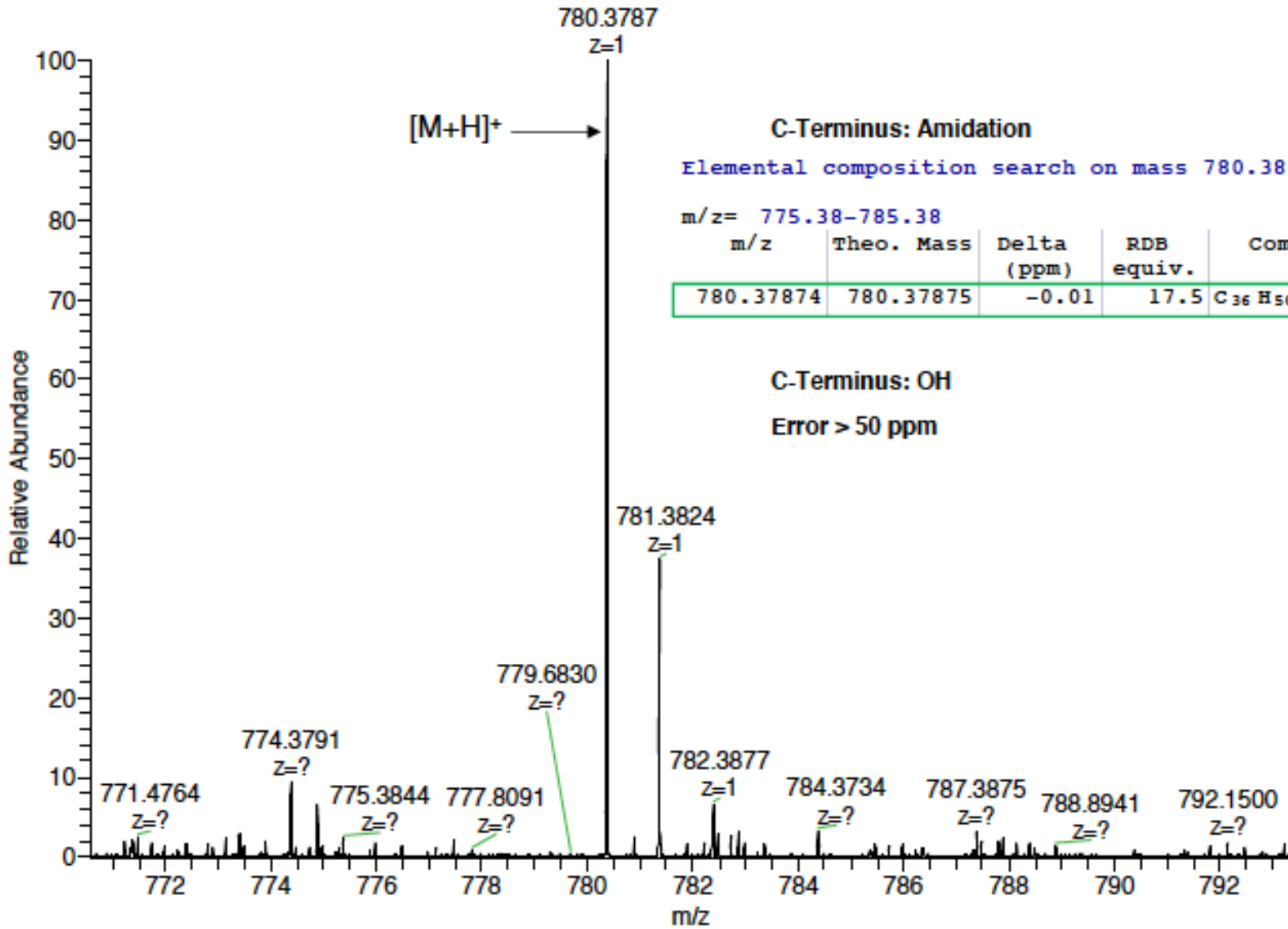
Zoom mass spectrum  
m/z 762-779

AV: 1 NL: 1.27E5



Zoom mass spectrum  
m/z 771-792

AV: 1 NL: 9.71E4



[M+H]<sup>+</sup> →

C-Terminus: Amidation

Elemental composition search on mass 780.38

m/z = 775.38-785.38

m/z	Theo. Mass	Delta (ppm)	RDB equiv.	Composition
780.37874	780.37875	-0.01	17.5	C <sub>36</sub> H <sub>50</sub> O <sub>9</sub> N <sub>11</sub>

C-Terminus: OH

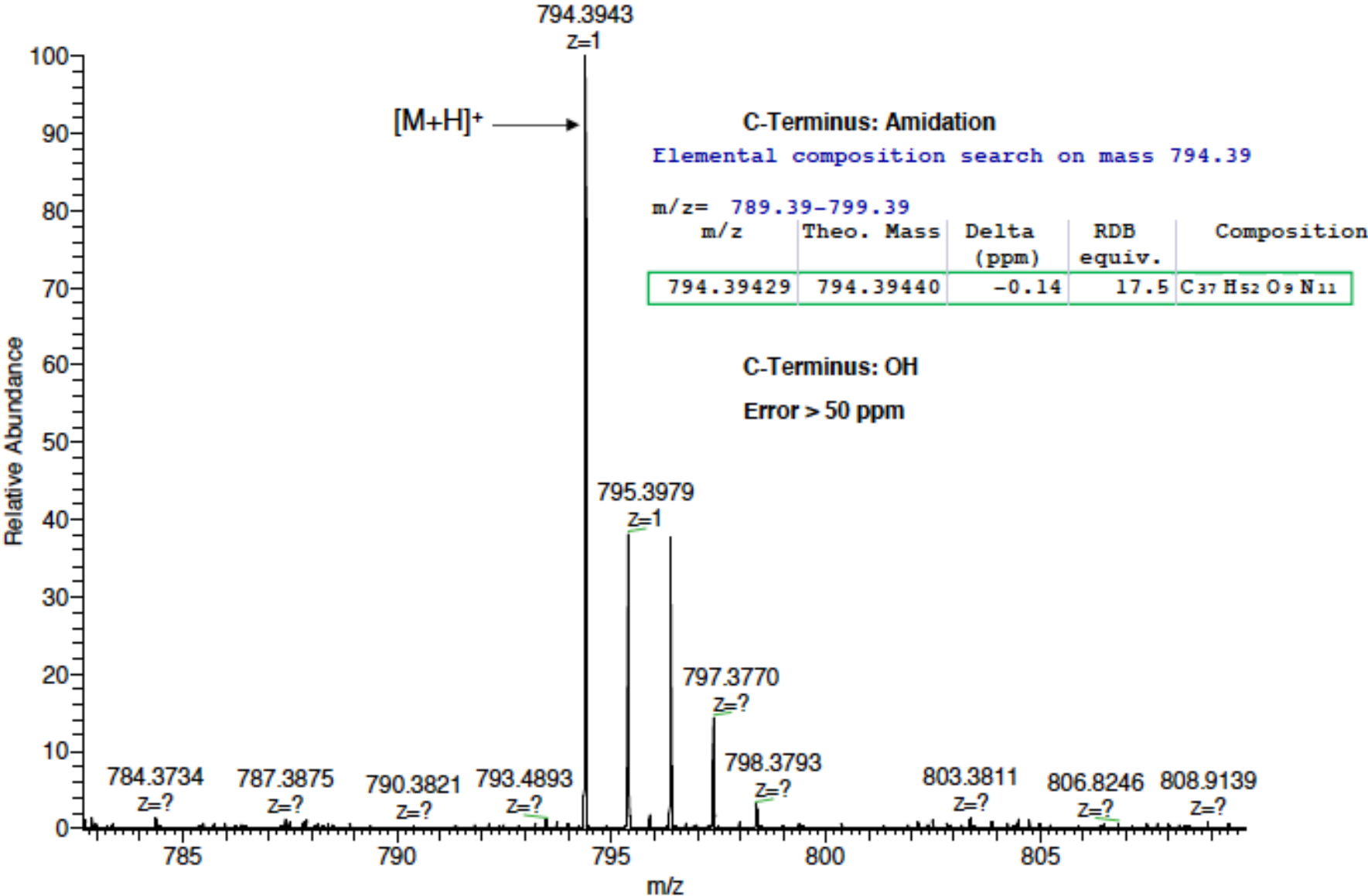
Error > 50 ppm



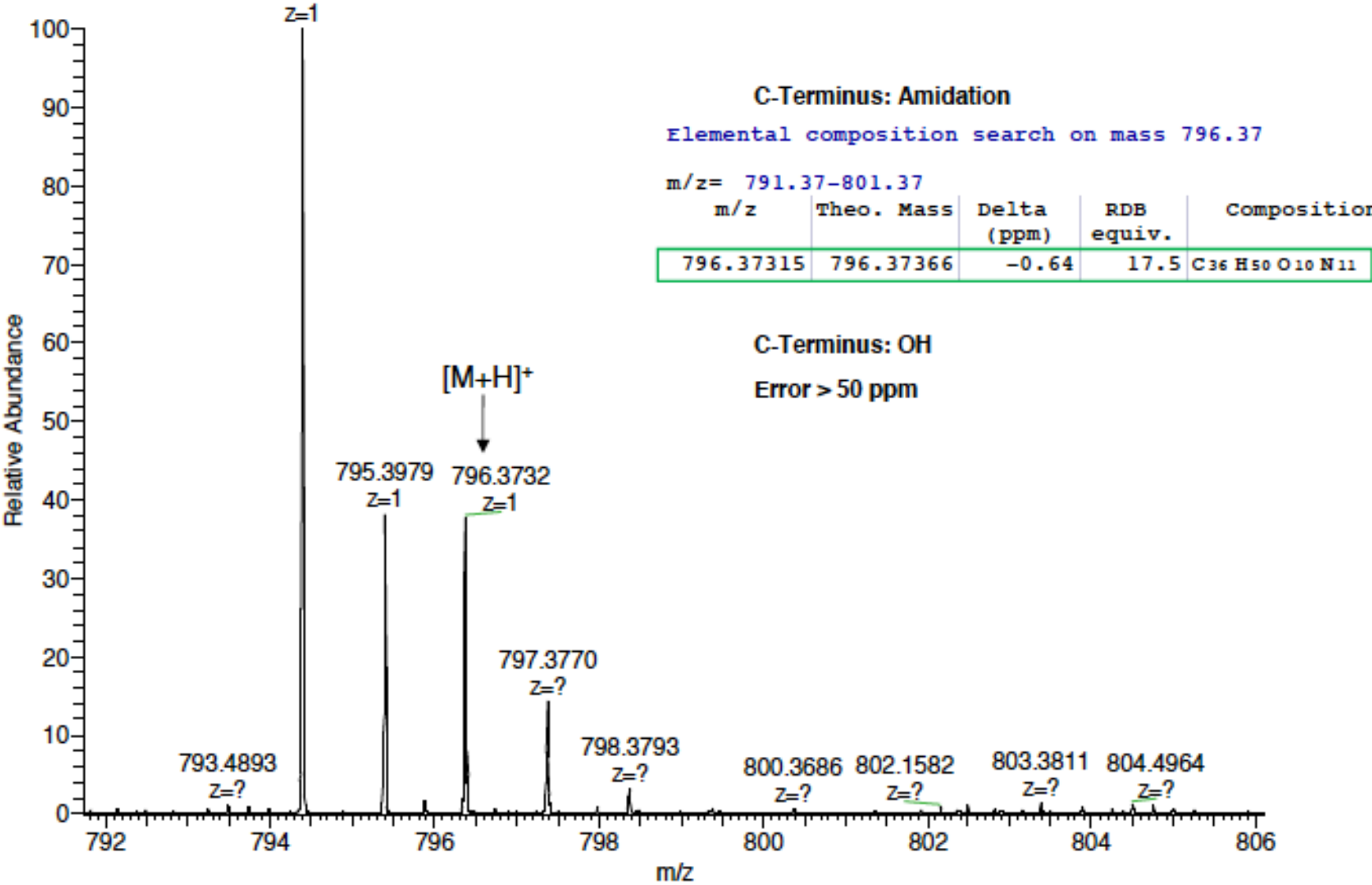
weraay

Zoom mass spectrum  
m/z 784-806

AV: 1 NL: 2.41E5



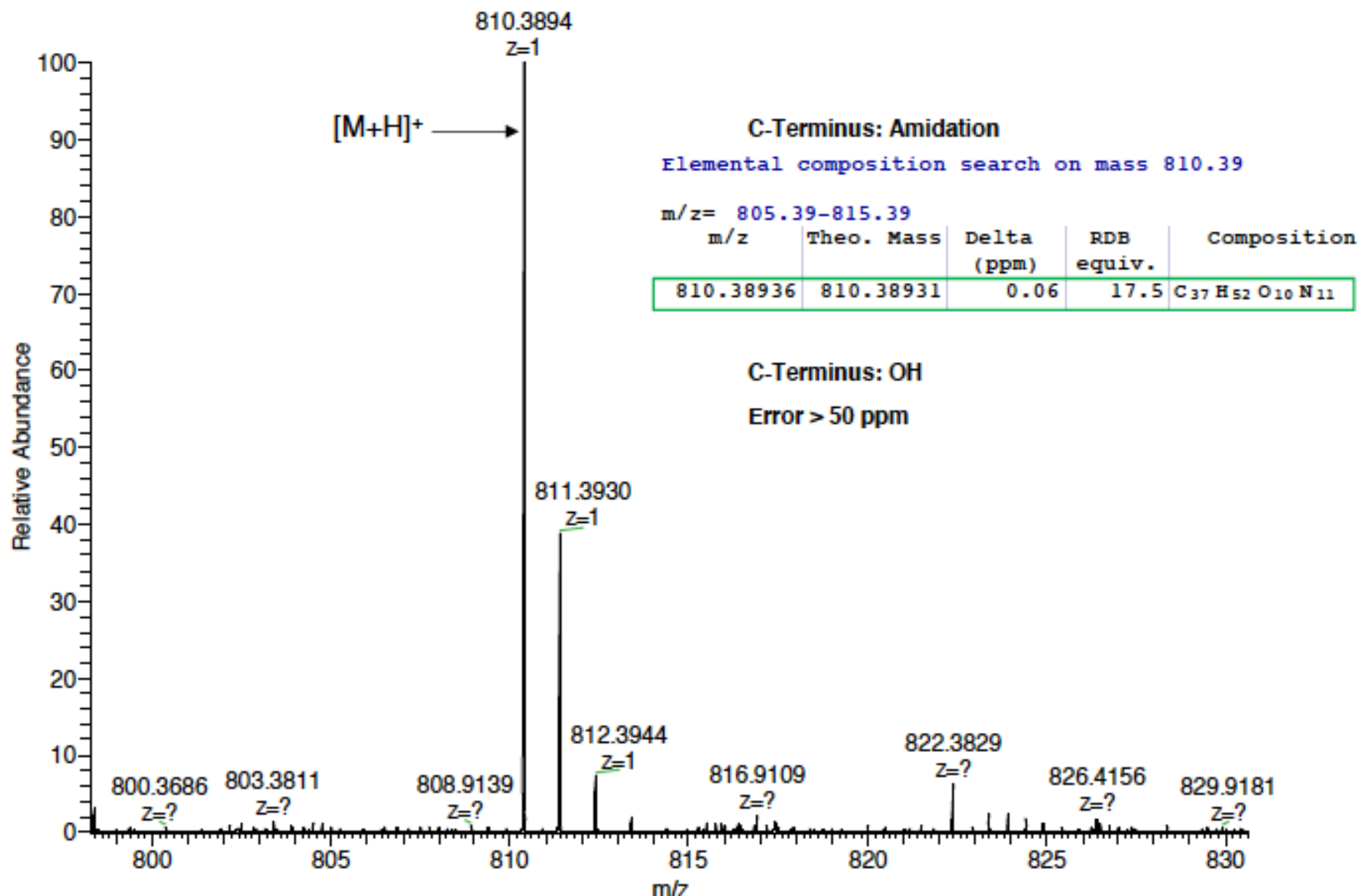
Zoom mass spectrum  
m/z 792-806  
AV: 1 NL: 2.41E5



# Zoom mass spectrum

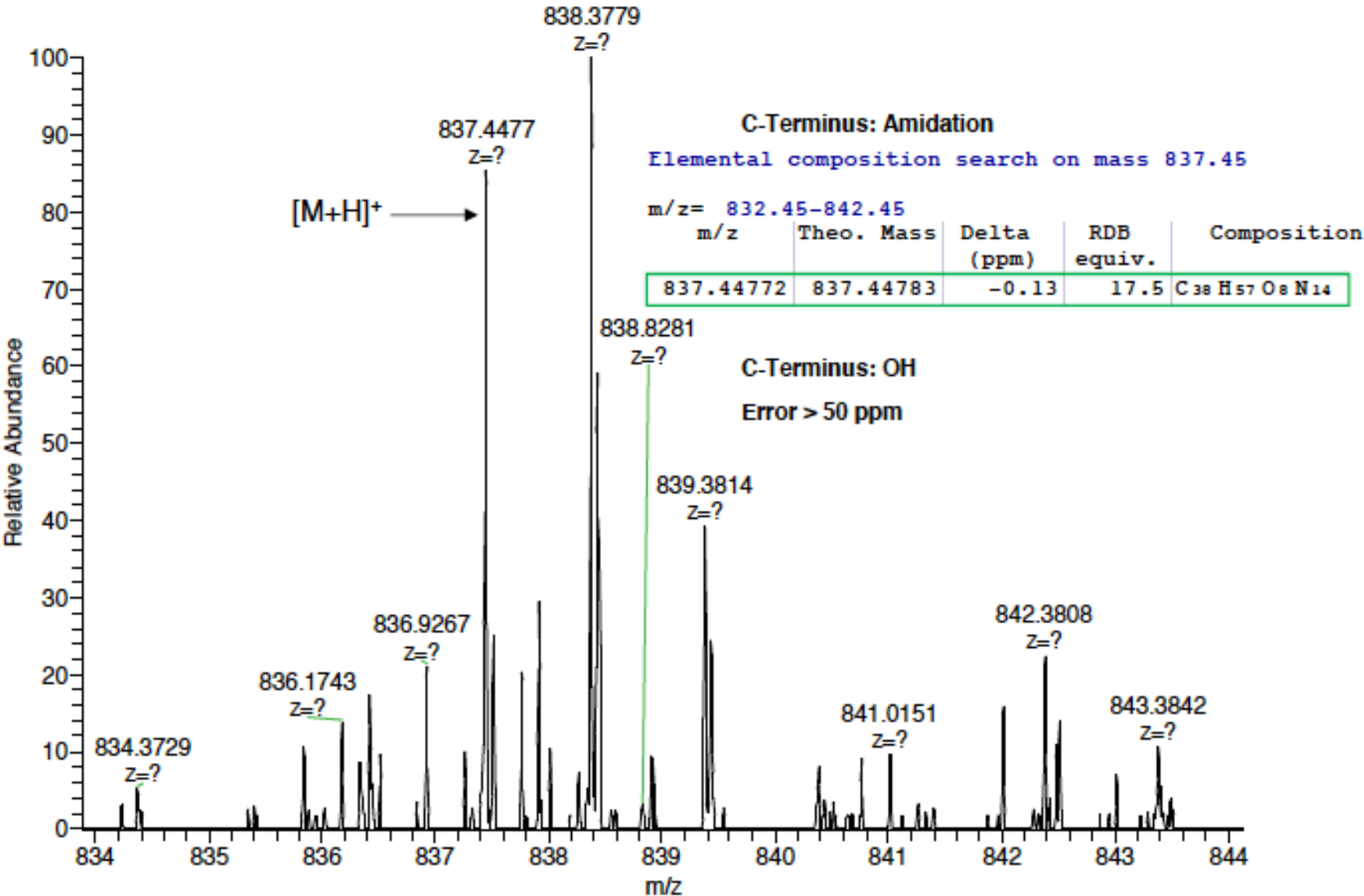
## m/z 799-830

AV: 1 NL: 2.38E5



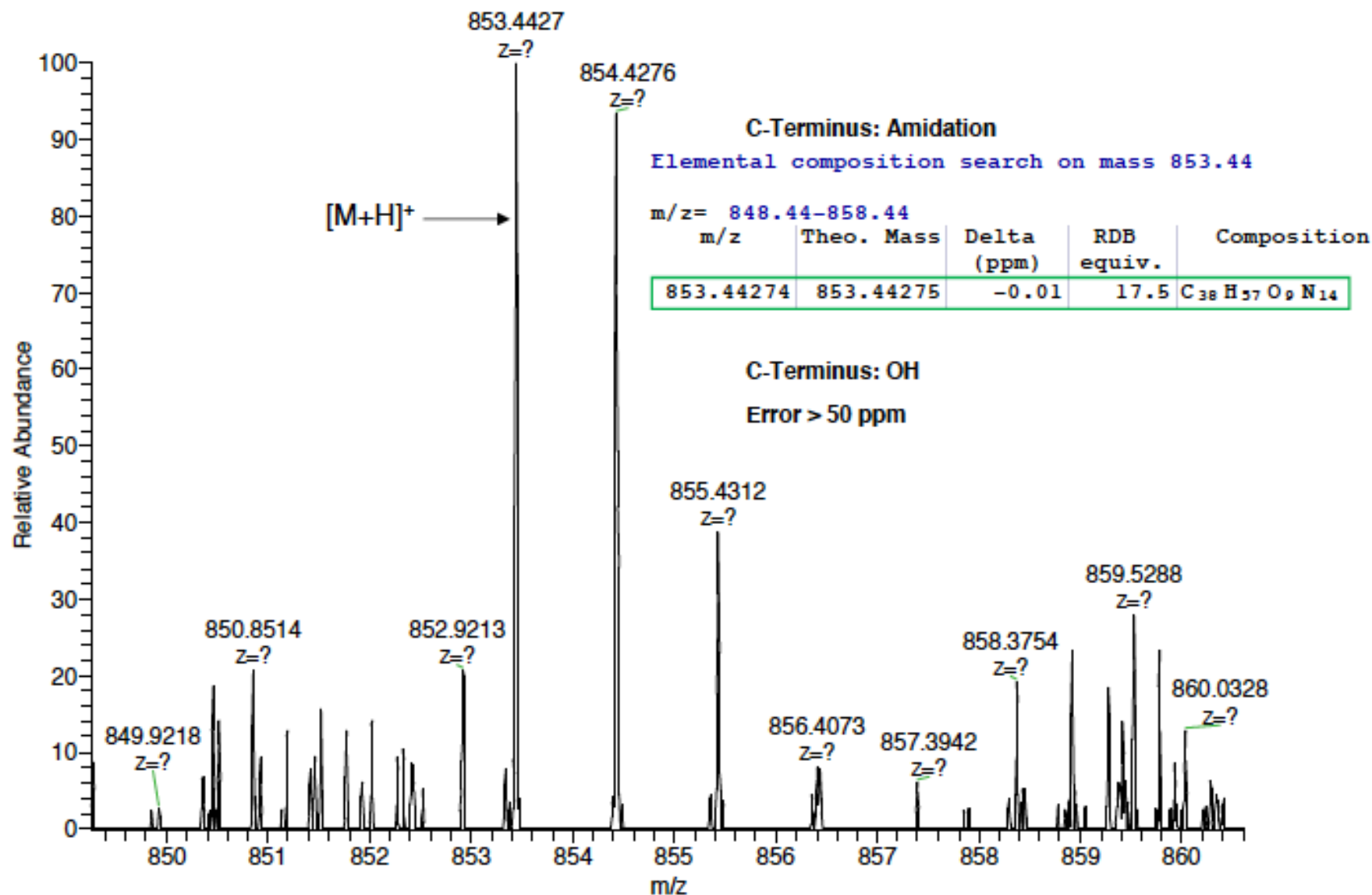
Zoom mass spectrum  
m/z 834-844

AV: 1 NL: 1.03E4



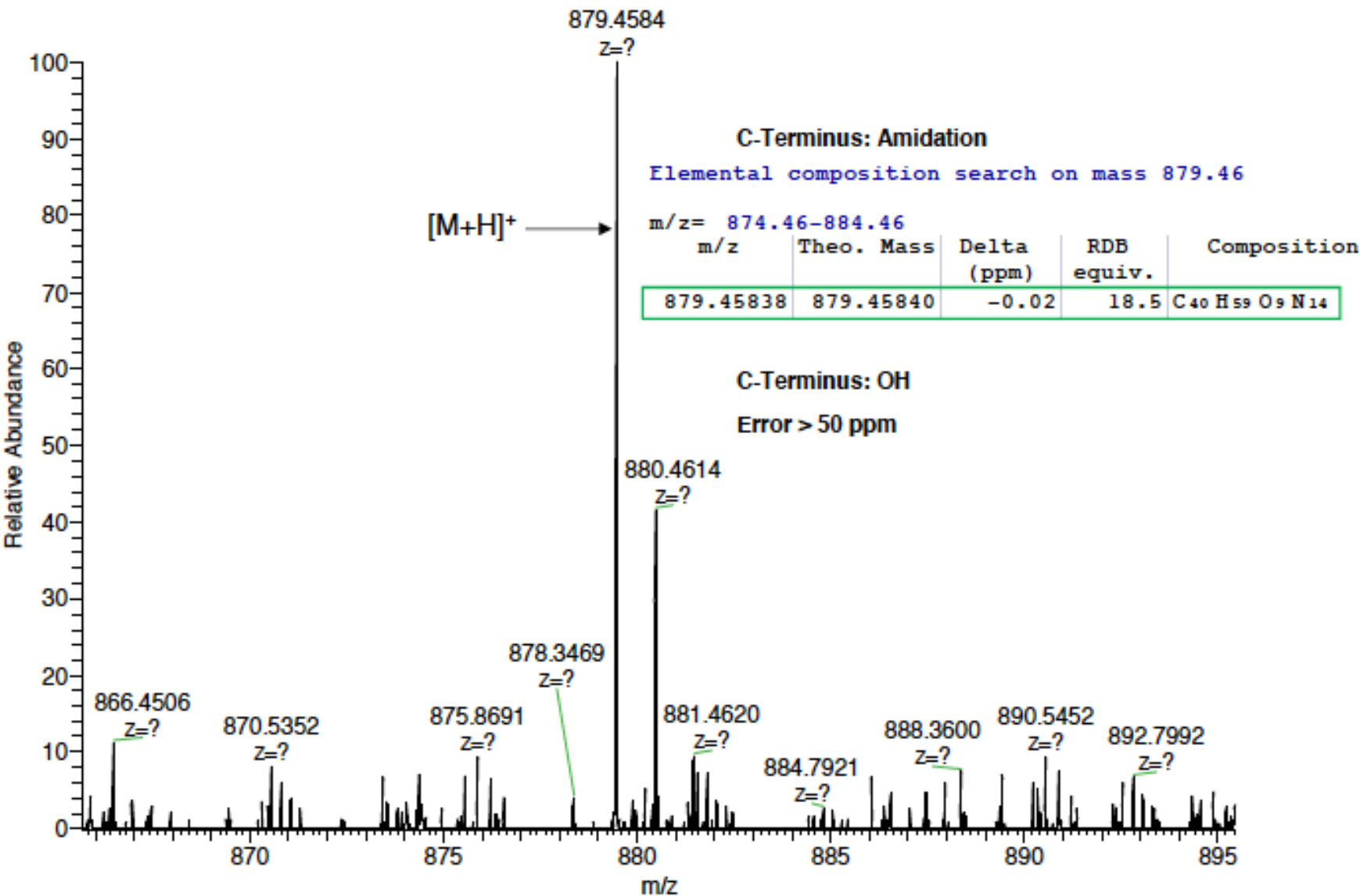
Zoom mass spectrum  
m/z 849-861

AV: 1 NL: 7.32E3



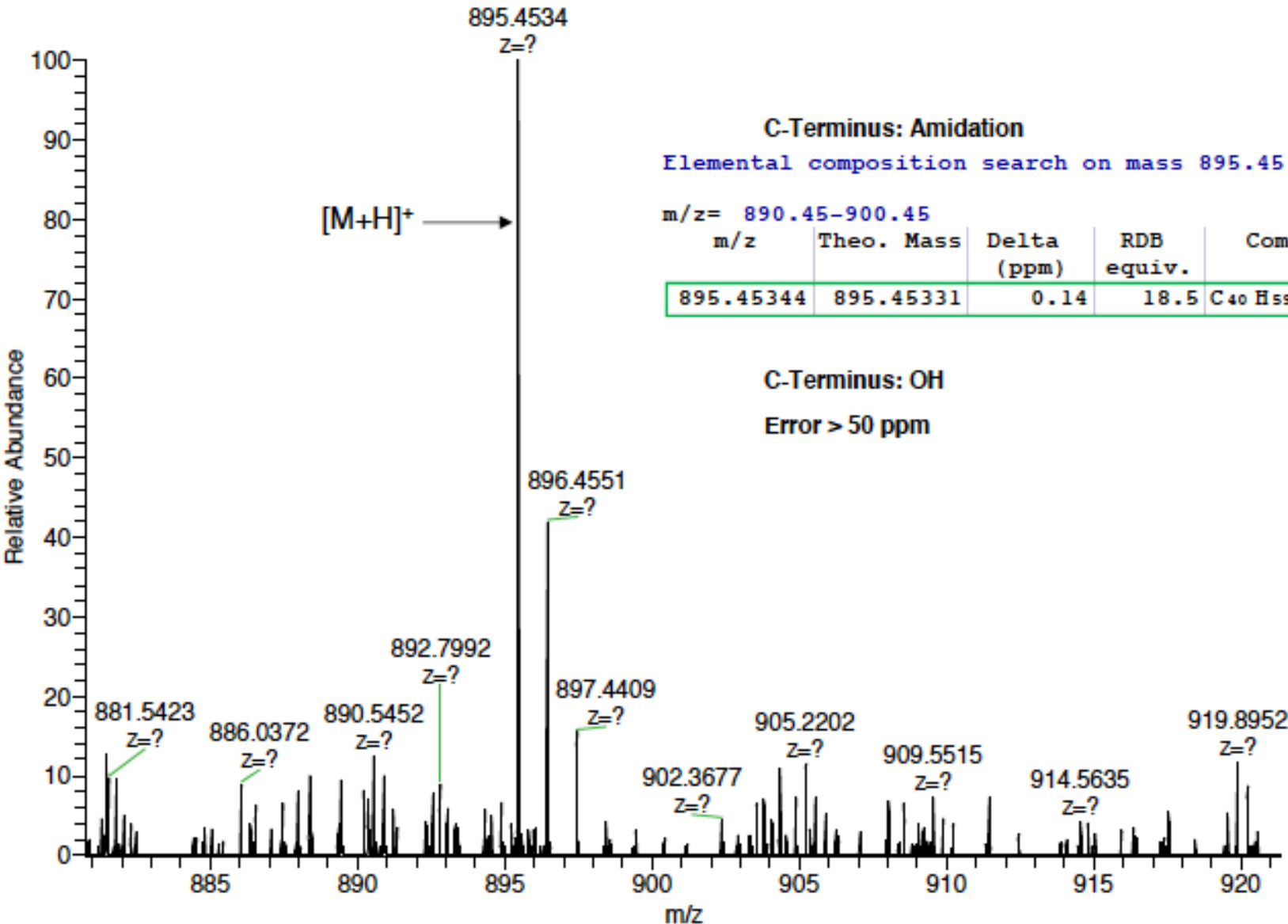
# Zoom mass spectrum

m/z 866-895  
AV: 1 NL: 2.37E4



Zoom mass spectrum  
m/z 866-895

AV: 1 NL: 1.75E4



C-Terminus: Amidation  
Elemental composition search on mass 895.45

m/z= 890.45-900.45

m/z	Theo. Mass	Delta (ppm)	RDB equiv.	Composition
895.45344	895.45331	0.14	18.5	C <sub>40</sub> H <sub>59</sub> O <sub>10</sub> N <sub>14</sub>

C-Terminus: OH  
Error > 50 ppm