

Supporting data

Title: Effects of pyrrole-imidazole polyamides targeting human TGF- β 1 on the malignant phenotypes of liver cancer cells

By Keiko Takagi, *et al*

Contents;

Supplementary Figure S1

Supplemenraty Fig. S1

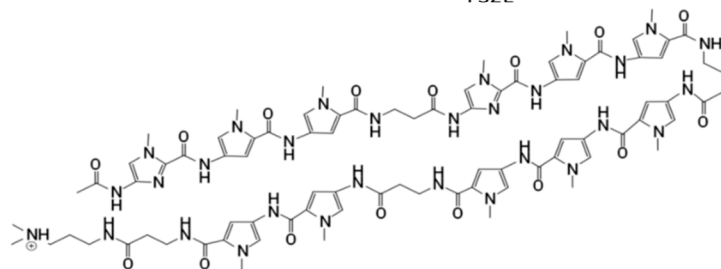
(a)

PI polyamide binding site

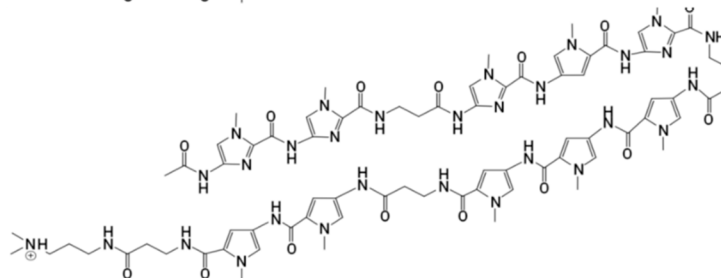
-1430 ACAGGAGGCTGCTTAGCCACATGGGAGGTGCTCAGTAAAGGAGAGCA ATTCTTAC AGGTGTCTGCCTCCT

FS2E

(b)



(c)



Supplementary Fig. S1. Target sequence of GB1101 on human *TGF- β 1* promoter region and its structure. (Cited from ref 15 with permission)

(a) GB1101 was designed to bind to a DNA sequence near the FSE2 site (–1383 to –1376) upstream of the transcription initiation point in human *TGF- β 1* promoter region (boxed).

(b) Structure of GB1101 and (c) a mismatch PI polyamide.