

Supplementary material

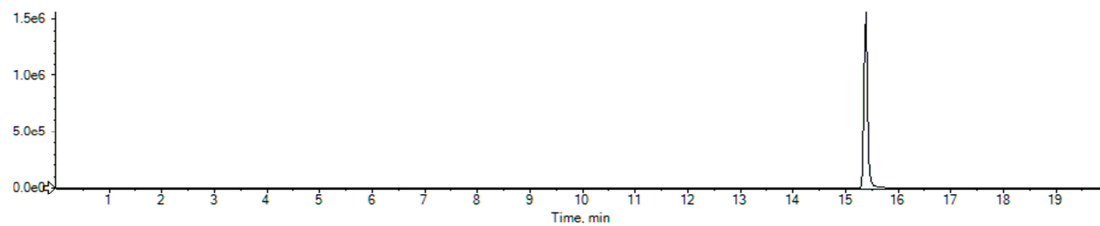


Figure S1. Extracted ion chromatograms of skimmianine standard

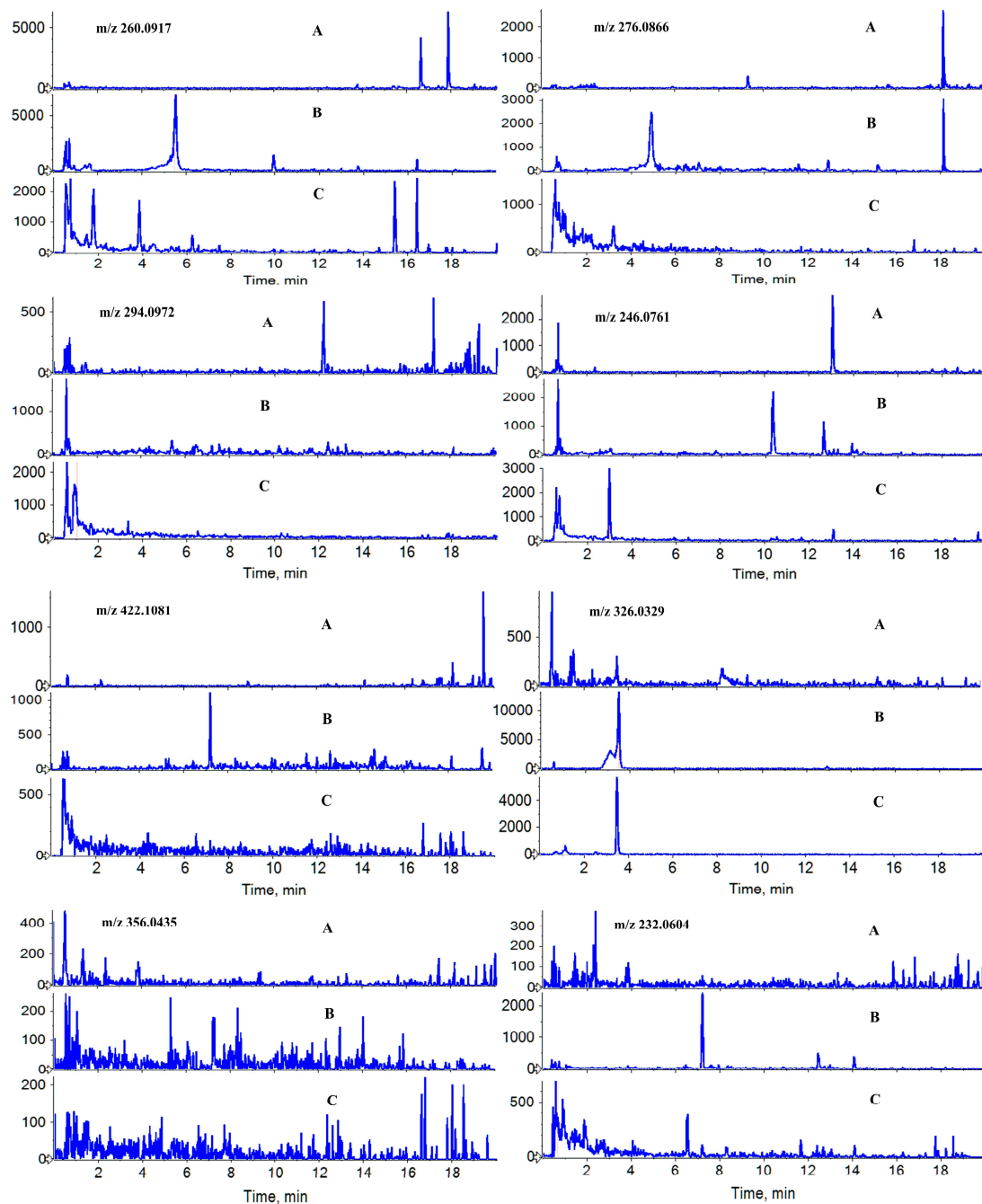


Figure S2. Extracted ion chromatograms of skimmianine and its metabolites in rats: A, blank plasma sample; B, blank urine sample; C, blank feces sample.

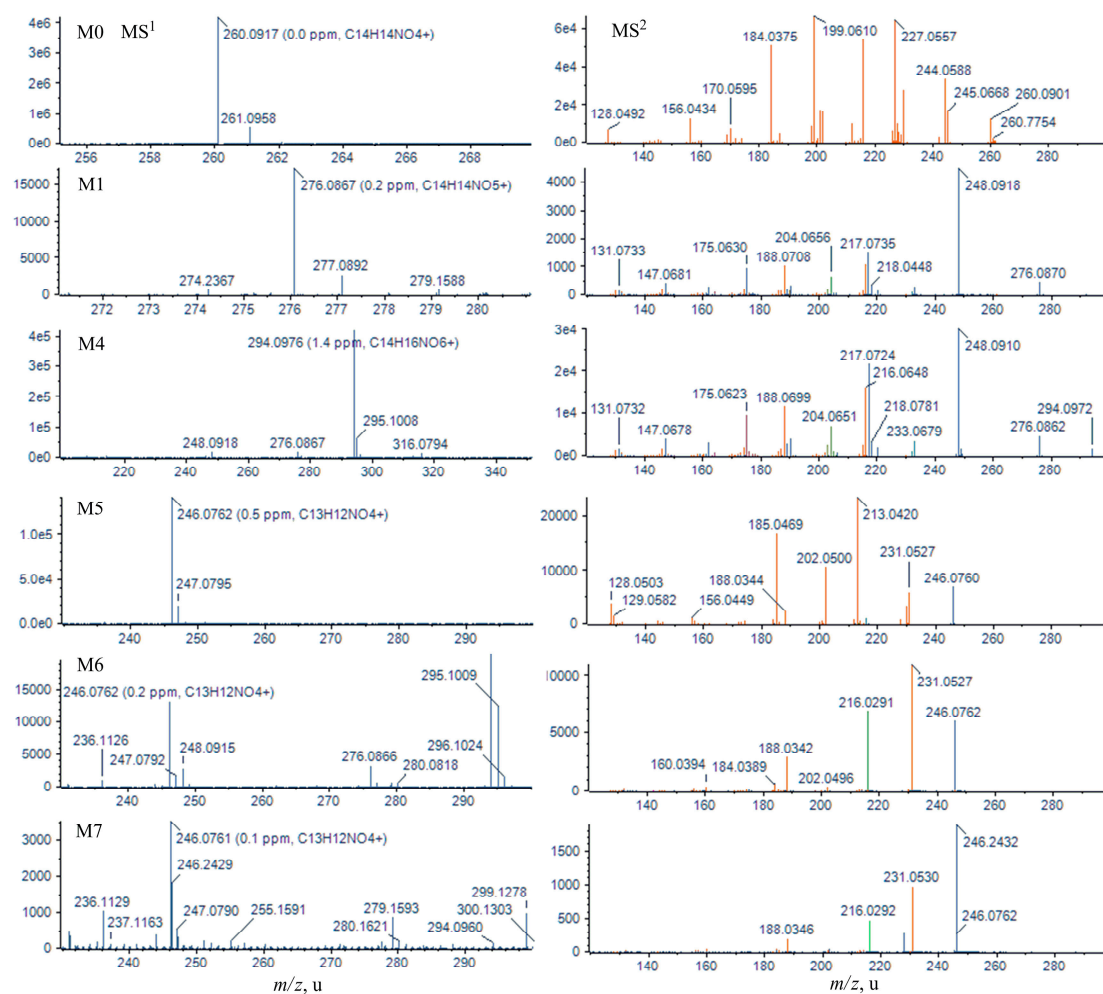


Figure S3. MS¹ and MS² spectra of parental drug and its metabolites identified in rat plasma samples.

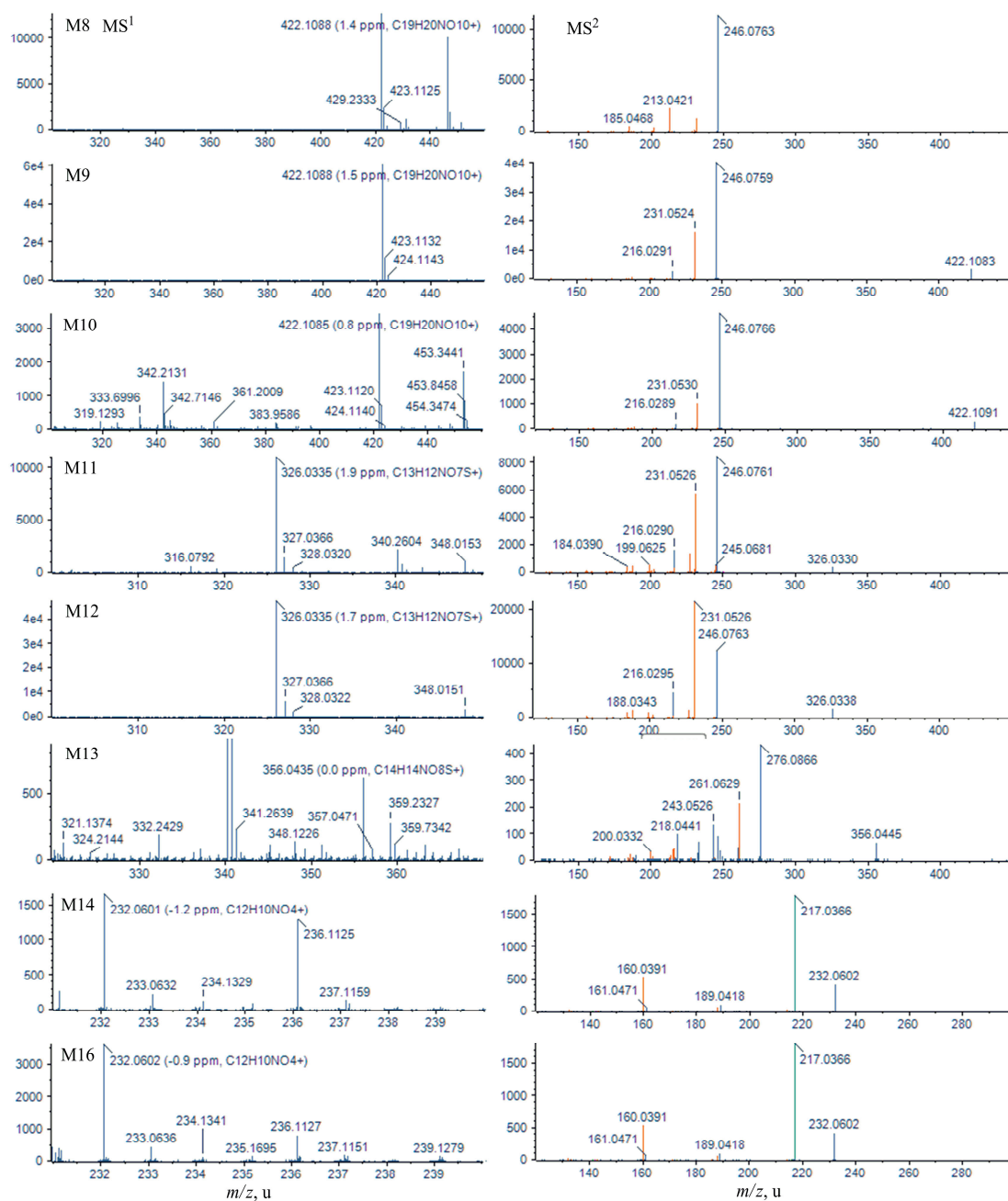


Figure S3. Continued

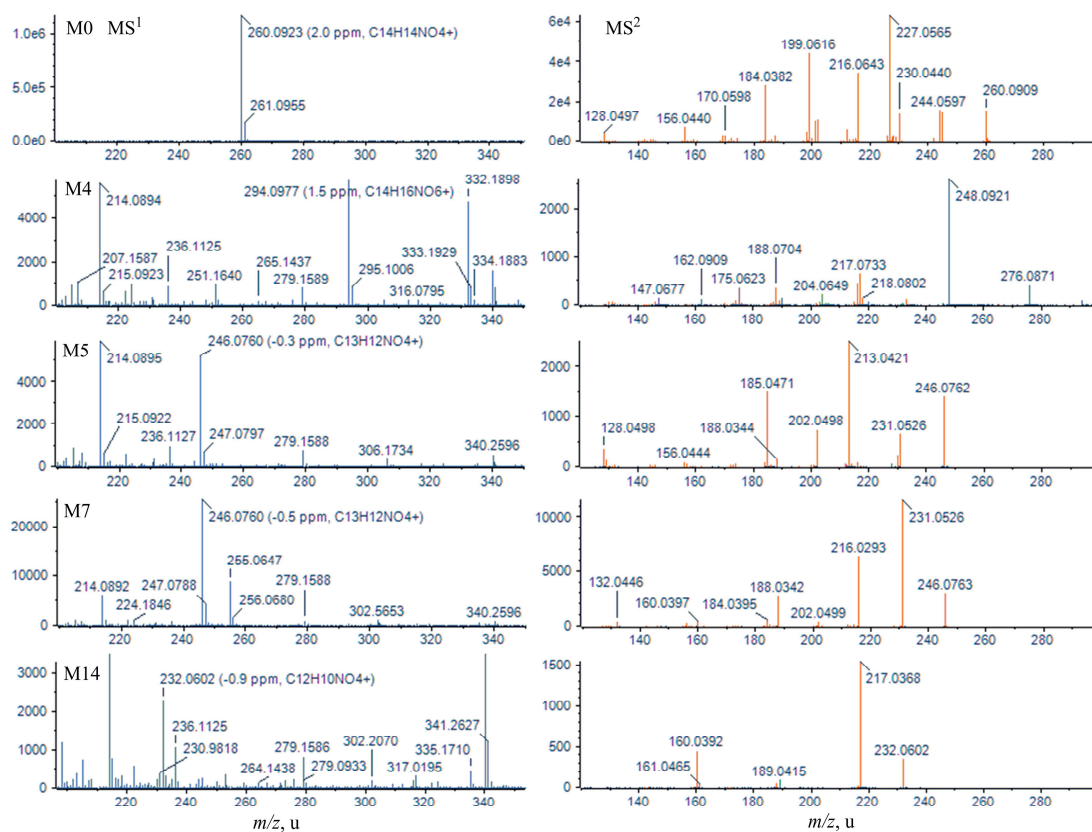


Figure S4. MS¹ and MS²spectra of parental drug and its metabolites identified in rat feces samples.