

Supplementary Materials

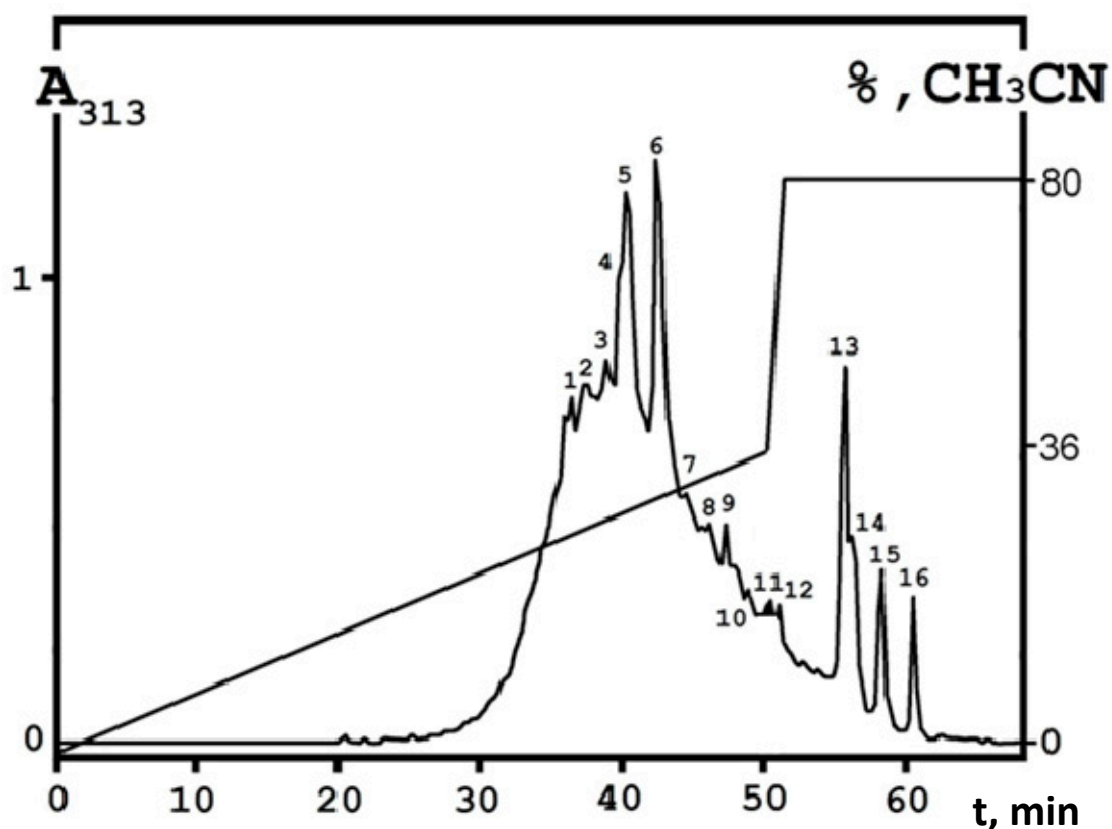


Figure S1. RP-HPLC chromatogram of the *Q. cortex* extract (“C” sample) obtained with Luna C₁₈ column (Phenomenex, Torrance, CA, USA). Abscissa axis—retention time, min; ordinate axis—absorbance (A) at 313 nm. The acetonitrile (CH₃CN) concentration in the mobile phase presented as a linear gradient. Fractions 1–16 were collected, lyophilized and tested for antibacterial and anti-QS activity.